



# කාර්ය සාධන වාර්තාව செயலாற்றுகை அறிக்கை Performance Report



ශ්‍රී ලංකා මිනින්දෝරු දෙපාර්තමේන්තුව  
இலங்கை நிலஅளவைத் திணைக்களம்  
Survey Department of Sri Lanka

# CONTENTS

## 1.0 Introduction

- 1.1. Vision
- 1.2. Mission
- 1.3. Objectives
- 1.4. Activities

## 2.0 Organizational Structure – Annexure 08

## 3.0 Human Resources Management

- 3.1. Staff – Annexure 01
- 3.2. Transfers
- 3.3. Establishment Work – Annexure 02
- 3.4. Human Resources Development – Annexure 03
- 3.5. Database Management and Computer Services
- 3.6. Issue of Licence

## 4.0 Financial Management

- 4.1. Expenditure Estimates – Annexure 04
- 4.2. Advance Account 'B' - Annexure 05
- 4.3. Revenue Account - Annexure 06

## 5.0 Physical Resources Management

- 5.1. Improvements on Immovable and Movable Assets – Annexure 07
- 5.2. Servicing and Repairing of Surveying Instruments and Constructions
- 5.3. Maintenance of Vehicles & Machinery
- 5.4. Procurement and Supply Branch

## 6.0 Development Activities

- 6.1. Land Surveying
- 6.2. Geodetic Surveys
- 6.3. Mapping
- 6.4. Geographical Names
- 6.5. Document Management and Professional Standard Branch
  - 6.5.1. Issue of Title Plans
  - 6.5.2. Issue of Tracings and Diagrams
  - 6.5.3. Court Commission Surveys
  - 6.5.4. Preparation of Final Village Plans and Final Topographical Plans
  - 6.5.5. Updating of Old Documents
  - 6.5.6. Conservation of Old Documents
  - 6.5.7. Providing Information required for Surveys (L96)
  - 6.5.8. Issuing Certificates of Accreditation

## 7.0 Land Information/Geographic Information Systems Branch

- 7.1. Air Surveys
- 7.2. Remote Sensing
- 7.3. Land Information Systems
- 7.4. Geographical Information Systems

## 8.0 Survey Training Institute

- 8.1. Courses conducted by the Institute during the year
  - 8.1.1 Regular Courses
  - 8.1.2 Short term Courses during the year
  - 8.1.3 Courses conducted for other Institutions
- 8.2 Performance of the Geodetic Survey Unit in the year 2013
- 8.3 Examinations conducted by the Examinations Branch in the year 2013

## 9.0 Research and Development Branch

## 10.0 Title Registration Branch

## 11.0 Auditing

## 12.0 Progress Branch

## 13.0 Other related Matters

- 13.1 Security & Janitorial Service
- 13.2 Welfare of the Staff

## 14.0 Conclusion

## Performance Report of the Surveyor General for the year - 2013

### 1.0 Introduction

By proclamation declared by the governor, Fredric North on 02<sup>nd</sup> of August 1800, the Survey Department was established. In page 15 of the book "Historical maps of Ceylon" compiled by Messers R.L. Brohier and J.H.O.Paulusz, mentions that most sophisticated technical equipment available then had been used for the survey work. Thence-forth in 213 years history as an initiative activator in any land development activity of the country, Survey Department has earned much acclaim for preparation of plans and maps of a high quality using up to date technology available then and it is a matter of pride for our staff, thence to date.

Survey Department is the only National Institute established in Sri Lanka for Surveying and Mapping, similarly Survey Department is the focal point of Geographical Information Systems and Remote Sensing. For this reason the fact that the department has been appointed as the agency for the global mapping project organized by the International Steering Committee for Global Mapping (SCGM).

With the dawn of peace in the country, the department was called upon to play a greater role in resettlement, rehabilitation and reconstruction, specially in the North and East. To take forward the Mahinda Chinthana Programme the department has contributed its part in numerous ways for Government Development projects. Realizing the role as the forerunner in the development of the country by surveying and preparation of maps, a basic need for main aspects of Mahinda Chinthana program such as high ways, expansion of roads, initiation of

airport, harbour, tourist projects, power and energy projects such functions have been fulfilled successfully. Ihala Kotmale Power Station, Moragahakanda and Kaluganga Multi-Purpose Irrigation Project, Colombo-Kandy high way, Colombo Outer Circular Road, Sampur –Vellur Coal Operated Power Station, airport in Mattala, Uma Oya multi - purpose project and Kalugal Oya project are some of them.

Further, the department is actively contributing, by surveying and preparation of Cadastral Plans for the 'Bimsaviya' Program undertaken by Ministry of Land and Land Development with a view to issue title certificates.

With a view to provide benefits of the activities carried out by government institutions to the general public, copies of plans surveyed by Survey Department have been scanned and released to the internet enabling easy access to the general public through the internet. Releasing of this detail to the internet was held ceremonially on 19th July 2013. And releasing of the digital data relevant to the road system of Sri Lanka has been done concurrently to this program. This program, due to be commenced island wide, with a view to provide a solution to the different kind of problems faced by general public, in examining their plans, was commenced from the program of releasing of plans prepared by District Office - Colombo, to the internet. It would be convenience to find this detail by access to the website [www.survey.govt.lk](http://www.survey.govt.lk) of Survey Department.

While it was necessary to establish new District Offices and Divisional Offices to obtain the services, carried out by this department to the general public in North and East regions as well as to contribute to the development activities, District Office - Kilinochchi in last year and Divisional Office - Kilinochchi and District Office Mannar in this year could be opened. The new building, constructed for District Office - Jaffna due to be opened shortly.

Moreover, launching of the Atlas in 1988, Sri Lanka became another country among the several countries that have been prepared Atlases and the first volumes of Sinhala and Tamil translation of the 2nd edition, compiled using new technological methods was presented to his Excellency President on 1<sup>st</sup> of April 2013 in Ministry of Land and Land Development. The 2<sup>nd</sup> volume of that is due to be published in the first quarter in 2014.

Key activities carried out by the department in the year under review have been highlighted in this performance report.

## 1.1 Vision

Our vision is to be “The Leader of Land Information Right through”.

## 1.2 Mission

“To provide high quality land information products and services through professionally qualified and dedicated personnel.”

### 1.3 Objectives

The activities of the Survey Department are directed towards the well-being of the people through a network of offices spread throughout the Country, comprising Provincial Offices, District Offices, Divisional Offices and Survey Training and Surveying & Mapping Institute, Diyatalawa. The functions of all such Offices during the year under review were targeted on the following objectives.

- To complete the Annual Survey Training and Surveying & Mapping programs.
- To train the Staff.
- To build and maintain the required immovable and movable resources for the program embarked to be completed during the year.
- To appropriate the allocated public funds for each purpose which have to be carried out in the year.
- To maintain discipline and look after the welfare of Departmental staff.
- To control and maintain the standards of surveying profession.

### 1.4 Activities

- To establish and maintain a Geodetic Control Network throughout the country.
- To provide surveying services in all statutory requirements.
- To acquire aerial photographs for mapping and development plans.
- Supply of information by means of maps.
- To prepare and publish Topographical maps, Thematic Maps and Special purposes maps for national requirements.
- Preparation of a Geographical Information System covering the entire country.
- Preparation of a land information system systematically covering the entire country.
- Obtaining of geographical and land information by using the satellite image technology.
- To regulate and maintain standards for the surveying profession.
- To train the staff for departmental needs.
- To provide consultancy services on surveying for the state agencies.
- To hold the examinations relevant to the staff.
- To conduct such research as may be necessary in respect of matters relating to surveying.
- Issue of Certificates of Accreditation for the registered surveyors who wish to carry out surveys, under the Title Registration Act No, 21 of 1998.



Producing on internet, plans prepared by  
District Survey Office - Colombo.

## 2.0 Organizational Structure

The Surveyor General being the Head of Department is responsible for maintaining the required performance levels in the Departmental functions and his powers have been delegated to various high ranking officials. (See Annexure 08)

## 3.0 Human Resources Management

During the year under review, 86 Apprentice Map Technological Officers, 7 Photogrammetric Technicians and 02 Air Photo Lab Technicians joined the Department.



Presentation of letters of appointment to the officers recruited to the Sri Lanka Technological Service by the Hon. Minister of Land and Land Development on 19-02-2013.

### **3.1 Staff**

Full details of the Staff of the Department are given in Annexure 01. As in the previous year, this year too, there were shortages in approved cadre of many services. However the functions planned for the year, as well as additional and urgent work that arose due to government massive development projects were executed amid difficulties. (*See Annexure 01*)

### **3.2 Transfers**

The annual transfers of Provincial Surveyor Generals, Snr. Deputy Surveyor Generals, Deputy Surveyor Generals, Snr. Supdts. of Surveys, Supdts. of Surveys, Government Surveyors, Technical and Administrative Officers, Map Technological Officers, Survey Field Assistants and Departmental Labourers were carried out in accordance with the stipulated procedure. Annual transfers of the officers of the Combined Services were also affected within the department as well, in accordance with the transfer orders of the Combined Services.

Accordingly 01 Snr. Deputy Surveyor General of the Sri Lanka Administrative Service, 02 Asst. Directors(Finance) of the Sri Lanka Accountant Service, 01 Assistant Translator, 10 Public Management Assistant Officers of the Combined Service, 07 Drivers, and 07 officers of Karyala Sevaka Sevaya were sent out on transfers while 01 Additional Surveyor General of the Sri Lanka Administrative Officers Service, 01 Translator, 10 Management Assistant Officers, 02 Drivers and 20 officers of Karyala Sevaka Sevaya came to the Department on transfer.

### **3.3 Establishment Matters**

There were shortages in approved cadre in many services. Nevertheless, establishment matters such as promotions, transfers and so forth were successfully carried out. (Please see Annexure 02)

### **3.4 Human Resources Development**

Out of 19 offers for foreign trainings, 16 were short term ones. However, 292 officers participated in 40 short-term and 07 officers in 06 long-term local training Programmes. (*See Annexure 03*)

These programs were useful in enhancing the knowledge of modern technology and of other relevant fields, which contributed to the efficiency of the Department.

### **3.5 Data Base Management and Computer Services**

New trends in information technology were made use of considerably during the year in the Department regarding the Human Resource Management, Data Storage, Financial Management as well as systematic and quick retrieval of information. Apart from these, the internet and e-mail were facilitated to gain universal knowledge and was delivered to departmental instructions to the provincial, district and divisional staff in an expeditious manner.

Trouble shooting and maintenance of all the personal computers and Local Area Network (LAN) in the Head Office were attended and no serious breakdown was reported during this year. In addition to that technical advisory services on procurement of personal computers, application software and all other IT related peripherals were also provided whenever required.

The Human Resources Information System (HuRIS) is being successfully maintained with continuous updating process and provided the opportunity for the provincial offices to retrieve such information. Government Payroll System (GPS) which is decentralized at provincial level also was used as source for daily updating process.

The website for the Department was continuously updated and maintained with the help of internal staff. Web address is <http://www.survey.gov.lk> hosted in our dedicated server at Sri Lanka Telecom Internet Data Center under Uniform Resource Locator under Universal Reference Locator (URL) <http://www.survey.gov.lk>.

Daily Attendance Maintenance and Reporting System for the Survey Department Head Office staff was handled by Computer Branch.

Installed and maintained Kaspersky Antivirus Software for all computers in the Department to protect data and information from virus infection and providing necessary trouble shooting procedures for removal of virus infections when ever required. In addition to that advisory services provided to trouble shooting of hardware & software problems in all computers and peripherals in the department.

In addition to the Human Resources Information System (HuRIS), information databases for departmental circulars, department telephone directory, / Public Administration/ Public Finance circulars etc. are being maintained as a support system for administration.

In house softwares were developed for following tasks according to the department requirements.

- Stores Information and Monitoring Software in Procurement and Supplies Branch.
- Examination Information System Software for Examination Branch, I.S.M.
- Final Stage of development software for Survey Requisition Information and Monitoring System for Survey Department of Sri Lanka.

### **3.6 Issue of Licenses**

3.6.1 Issue of Surveyor General's certificates as Authorized Draughtsmen- vide table 8.3

3.6.3 Issue of Certificates of Accreditation. – See para 6.4.8

In terms of the Survey Act No. 17 of 2002, Surveyors were issued with annual practicing licenses by the Land Survey Council.

## **4.0 Financial Management**

The Departmental accounting system comprises 33 paying offices viz. Head Office, 09 Provincial Offices, 24 District Offices and Institute of Surveying & Mapping, Diyatalawa. The financial affairs of the Department during the year under review are reflected in Annexures 04, 05 and 06.

4.1 Expenditure Estimate	-	Annexure - 04
4.2 Advance Account 'B'	-	Annexure - 05
4.3 Revenue Account	-	Annexure - 06

## 5.0 Physical Resources Management

The Head Office of the Survey Department, Institute of Surveying and Mapping at Diyatalawa, 09 Provincial Surveyor Generals' Offices, 23 District Survey Offices are maintained as the physical resources of the Department and 34 Divisional Offices are housed in Departmental and Government buildings. 58 Divisional Offices are housed in leased buildings and the department has to undertake the task of construction of new buildings. In addition to that, department have quarters and circuit bungalows.

Being added Divisional Survey Office - Kilinochchi and District Survey Office - Mannar as Departmental physical resources in year 2013, the collection of the departmental resources has been improved. Further, a new building is being constructed for the District Survey Office, Jaffna.

### 5.1 Physical Resources Development

The renovations and constructions costing each over Rs.50,000.00 which were carried out by the Department are as follows.

tem No.	Province	Office/Item	Cost
1.	Western Province	Making security hut, name board and pantry cupboards – District Survey Office, Gampaha	84,250.00
2.	Sabaragamuwa Province	Construction of path with inter-lock blocks for new building & gardening	55,375.00
3.		Partitioning District Office, Ratnapura	582,400.00
4.		Establishment of Intercom System	50,288.00
5.		Fixing grills for windows - District Office, Ratnapura	70,300.00
6.		Construction of the retaining wall- Divisional Office, Ratnapura	177,370.00
7.		Repair of quarters No. 75	104,873.20
8.		Repair of quarters No.4/7	131,235.00
9.		Repair of Supdt. of Surveys quarters	83,279.00
10.		Fixing racks for Record Room	89,999.00
11.		North Central Province	Further construction of garage for vehicle park - Provincial Office, Anuradhapura
12.	Repair of dining room – District Office, Anuradhapura		59,311.00
13.	Repair of pre-fabricated Hut No.37		853,339.50
14.	Construction of Garage - District Office, Polonnaruwa		98,000.00
15.	Repair of front wall - District Office, Polonnaruwa		206,000.00
16.	Fixing of racks for record room -		196,000.00
17.	North Western Province	Fitting of new pipe line of S.S. Quarters	77,337.96
18.		Replacing of the ceiling of the District Office	232,500.00
19.	Central Province	Repair of bathroom in rest room	195,255.35
20.		Repair of the roof - District Office, Matale	58,000.00
21.	Southern Province	Painting of Divisional Survey Office, Elpitiya	211,055.00
22.		Repair of Divisional Survey Office, Angunakolapelassa.	63,700.00

tem No.	Province	Office/Item	Cost	
23.		Repairing the lunch room - Provincial Office, Galle	152,972.00	
24.		Repair of ladies toilet.	163,415.00	
25.	North & Eastern Provinces	Partitioning of record room and map sale section - District Office, Trincomalee	537,073.50	
26.	Uva Province	Repair of the pantry cupboards - District Office, Monaragala	66,000.00	
27.		Repair of kitchen and wall -District Office, Monaragala	67,750.00	
28.		Repair of ceiling of corridor - District Office, Monaragala	92,200.00	
29.		Repair of gutters and drain system of corridor -District Office, Monaragala.	72,500.00	
30.		Repair of bathroom - District Office, Monaragala	162,385.00	
31.		Repair of provincial Office, Badulla.	171,500.00	
32.		S.G.O. Colombo	Partitioning Internal Auditor's Room	180,600.00
33.	Purchasing necessary materials for renovation of old auditorium		307,640.00	
34.	Partitioning Administration Branch		466,965.00	
35.	Construction of boundary wall near pre-fabricated hut.		1,318,520.00	
36.	Rearranging of aluminium windows		123,000.00	
37.	Partitioning of progress branch		571,359.00	
38.	Waterproofing of concrete slab		1,971,630.00	
39.	Fixing of fire protection system		410,760.00	
40.	Partitioning of sport room		205550.00	
41.	Renovation of Surveyor General's Room		454,675.00	
42.	Partitioning of Addl. S.G.(Human Resources & Administration)		135,845.00	
43.	Repair of Canteen		1,399,971.33	
44.	Repair of Gutters of Head Office		969,752.00	
45.	Repair of toilet No.17		239,029.50	
46.	Partitioning of Exhibition Hall near Land Survey Council		290,292.80	
47.	I.S.M. Diyatalawa		Repair of Director's quarters	304,171.50
48.			Repair of No.5A and 9A quarters	123,518.00
49.		Repair of Survey Instrument Preventive Source.	92,300.00	
50.		Repair of instrument adjustment base.	86,510.00	
51.		Repair of wall	85,600.00	
52.		Construction of pavilion	58,000.00	
53.		Painting of Club and badminton court	54,594.00	
54.		Repair of telephone system	90,000.00	
55.		Repair of No.20 toilet system	100,935.00	



The record room of District Survey Office – Gampaha was declared open by Surveyor General

## 5.2 Services of Instrument Branch at Head office

- ❖ Through giving training on theodolite services to Instrument technicians and having serviced theodolites, which warranty period was expired, in the department, it was possible to reduce the amount of 2.9 million spent on theodolites services in previous years up to 1.8 million.
- ❖ Through buying and using of 25 "Lika" Total Stations in 2013, it was possible to add a new kind theodolite to the usage and the number of departmental theodolite has been developed up to 317.
- ❖ With the intention of completion of shortcomings, using money which have been saved through having theodolite serviced in the department itself, it was possible to buy 3 battery in theodolite and 5 transmission wires spending 2 lakh rupees and to issue to the field.
- ❖ Steps have been taken to recruit 6 instrument technicians, 4 tools labourers and 4 carpenters to fill the vacancies remained for long time.
- ❖ Since brass etc were bought in proper time, it was possible to produce require brass bolts for control points situated in different areas of the island without delay. Actions was taken to accept all the "Boif" theodolite used in field with batteries to the Head Office and to issue theodolite without additional expenses to the field, in place of such "Boif" theodolite.
- ❖ Since the capability to obtain the accurate present condition of prefab camps, it was easy to take decision of removing and providing of prefab camps on requirement.

### 5.3 Maintenance of Vehicles and Machinery & Equipment

Repairs of 81 vehicles, each costing over Rs. 50,000.00 were done as follows.

Province/ Section	No. of vehicles Maintained	Total Cost (Rupees)
Surveyor General's Office	05	1,420,201.00
Western Province	09	1,774,162.00
Central Province	11	1,280,461.00
Sabaragamuwa Province	06	569,350.00
North Central Province	08	926,719.38
North -Western Province	04	610,211.41
Uva Province	06	637,070.00
Southern Province	12	1,208,098.40
North & Eastern Province	09	1,264,880.00
I.S.M. Diyatalawa	11	1,512,392.20

### 5.4 Procurement and Supplies Branch

Verification of stores pertaining to 756 stores ledgers maintained by the various Branches in the Head Office, Provincial Surveyor Generals', District and Divisional Survey Offices as well as by the Surveyors all over the country has been completed.

Accordingly, files have been cleared issuing clearance certificates for all Government Surveyors, all Provincial Surveyor Generals' Offices, 21 District Survey Offices out of 22, all Divisional Survey Offices, 3 stores units out of 4 units at the Institute of Surveying & Mapping, Diyatalawa and for all circuit bungalows and Holiday Homes, and all sections for surveyor General Office.

Permanent clearance for 4 officers who had retired and for 6 officers who had resigned their posts and for 30 officers, have been issued temporary clearance.

In 2013, capital goods worth over Rs. 21.6 m and recurrent goods amounting to over Rs. 10.9 m have been procured, and apart from that capital goods worth over Rs. 376.6 m and recurrent goods over Rs. 6.9 m have also been procured for Bimsaviya Programme.

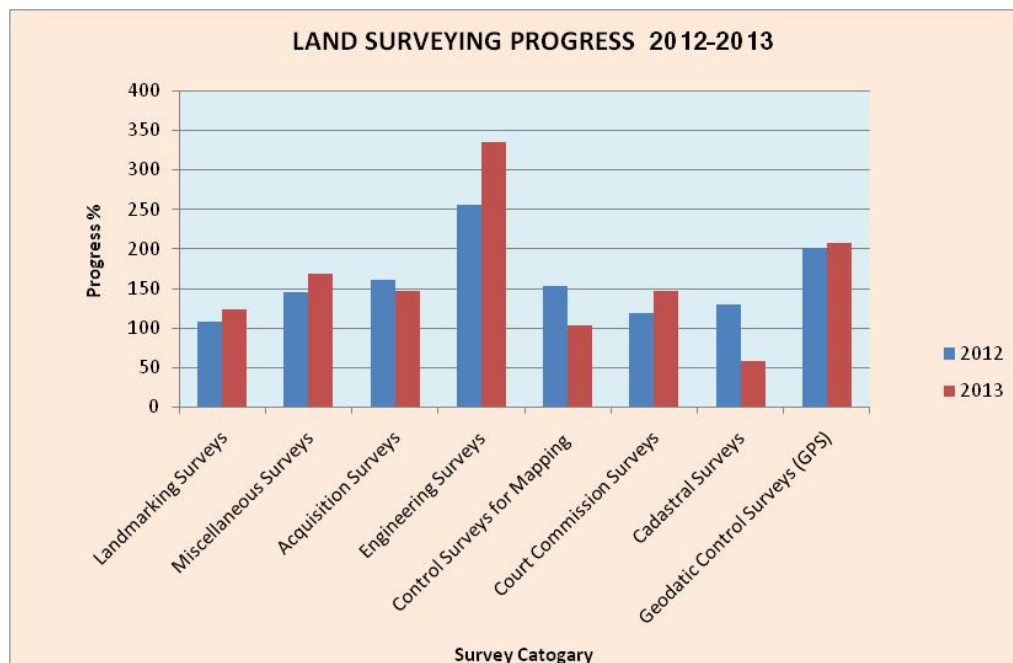
## 6.0 Development Activities

During the year under review as the Government implemented massive development projects, the Survey Department too being a forerunner among the initiators, contributed its part dispassionately.

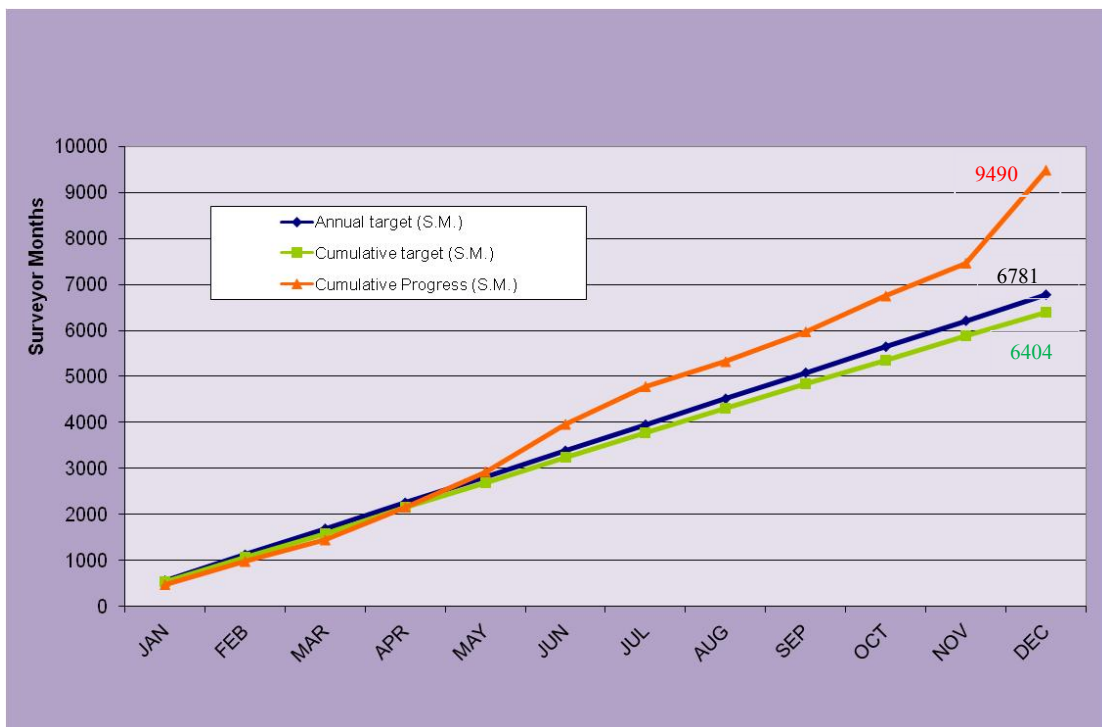
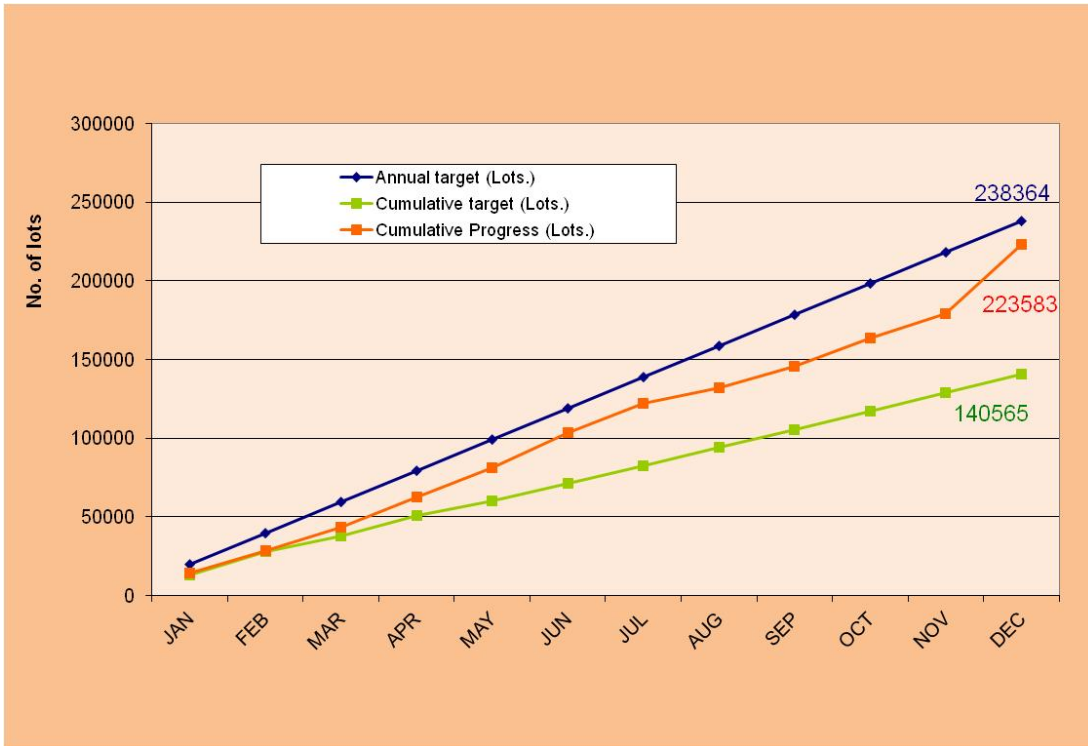
### 6.1 Land Surveys

The progress achieved from various types of surveys carried out during the year under review is as follows.

Category Name	Physical Performance							
	Annual target.		Cum. target		Cum. progress			Achievement %
	Syr. Months	Lots	Syr. Months	Lots	Syr. Months	Lots	Reqn.	Syr. Months
Land Marking Surveys	1817	47236	1753	35052	2154	46856	4062	123
Miscellaneous Surveys	797	20722	1066	21248	1786	60462	2882	167
Land Acquisition Surveys	575	17258	627	15667	914	24084	915	146
Engineering Surveys	119	2370ha	139	2785ha	465	6486ha	166	334
Control Surveys for mapping	116	-	163	-	167	45	288	103
Court Commission Surveys	201	6030	304	4564	447	9266	491	147
Cadastral Surveys	2940	147000	2135	64035	3108	82915	1799	146
Global Positioning System Surveys	216	6048pt	217	5425pt	448	10920pt	-	206
<b>Sub Total</b>	<b>6781</b>	<b>238364</b>	<b>6404</b>	<b>140565</b>	<b>9490</b>	<b>223583</b>	<b>10603</b>	<b>148</b>



The progress of the surveys carried out during the years 2012 and 2013 is shown above by percentage and while number of lots completed and the survey months involved as regards to the surveys carried out in 2013 are given below.



**Special survey works carried out in the year 2013 are as follows.**

- Setting out of center line in Kurunegala - Habarana Railway Line, using concrete posts. (31.9 km)
- Obtaining of GPS data for mapping out of archaeological places in north-western province under Deyata Kirula programme.
- Setting out of GPS control points in Dehiowita - Deraniyagala Nuri road for road widening and development works.
- Setting out of GPS control points for widening and development works of Matale town and suburb in A9 road.
- Setting out of GPS control points and precise levelling for Greater Kurunegala water supply and Drainage project.
- Setting out of GPS control points for surveys of Randiwela and Kospotuoya reservoirs.
- Setting out of GPS control points for the IFAD/ GEF participatory coastal zone Restoration and sustainable management project ( Kinniya - Upparu Area)
- Land marking 155 allotments of lands at Thabbowa under the Ranaviru Land Distribution Project and preparation of B.O.D. of 26.1 hectare at Anamaduwa, Nawagattegama, mundalama
- Acquisition surveys for Palaviya - Kalpitiya road. (142 Lots)
- As-built surveys of Palaviya- Kalpitiya road. (150 Lots)
- Acquisition surveys for Puttalam - Trincomalee road (188 Lots) (sec. 5)
- Land marking 310 allotments of lands at Bandarahena, Sameeragama for Housing Authority.
- Topographical Surveys in northern high way.
- Surveys for distribution of 192 of allotment of lands at Deduruoya
- Acquisition surveys in Anuradhapura - Padeniya road (1093 Lots)
- Acquisition surveys for Inginimitiya Project (544 Lots)
- Kurunegala - Madampe road (section 2) (5 km - 474 Lots)
- Kurunegala outer circular road (200 Lots)
- Acquisition Surveys for Mahawa fly-over (section 2) (170 Lots)
- Pannala outer circular road (229 Lots)
- Narammala urban development surveys. (section 5) 384 Lots
- As-built surveys for housing complex - Ampara, Arantalawa
- Acquisition surveys for Rubber project – Ampara, Padiyatalawa (4.4382 hectare.)
- Preparation of Blocking Out Diagram for Rubber project Lahugala. (295. 5173 hectare/313 Lots)
- Acquisition surveys for road development project, Peradeniya - Badulla - Chenkaladi
- Land acquisition surveys under Multi Purpose Development Project - Umaoya.
- Staking out surveys under Sugaladevi Project – Monaragala (180 hectare. 200 lots)
- Land Acquisition Surveys for Matara - kataragama railway line
- Preliminary surveys from Godagama to Beliatta in Matara under Hambantota southern high way project. (32 km / 964 hectare)
- Surveys relevant to finding out boundaries of forest Beraliya. (33.6 km)
- Land marking and preparation of plans in 4222 hectare to gazette lagoon Panichchakarni and mangroves connected to the lagoon as a reserve - Batticaloa
- Engineering surveys of proposed land for agriculture faculty of university of Jaffna
- Surveying of outer boundary of the land gazetted in Sri Lanka Investment Board area and preparation of maps. 846.66 ha. - Hambantota
- Establishing of reserves in Muruthawela reservoir, Kirindi oya, Tissa weva, Debara weva, weeravila, yoda weva and surveying of encroachment and preparation of tracing – Hambantota

- Surveying of 4156.35 ha. of additional grasslands for giriseeriya plantation - Hambantota
- Settlement of boundaries for army camp - Kegalle
- Aquisition Surveys for Colombo - Kandy road (3<sup>rd</sup> step ) - Kegalle
- Aquisition Surveys for Dehiowita - Deraniyagala Nuri Road - Kegalle
- As-built Surveys for distribution of sugar-cane plantation in Anuradhapura District
- As-built Surveys for the development of tourism in north area.
- Acquisition Surveys to establish the internal airport - Digana in Kandy District
- Survey of lands for implementation of recommendation of Lessons Learnt and Reconciliation Commission. ( Land Marking and Acquisition Surveys in Vavuniya, Mannar, Trincomalee, Ampara, Jaffna, Kilinochchi, Batticaloa and Mulativu. )
- Topographical surveys in southern highway.

6.1.1 Particulars of diagrams issued to procure grants, having surveys done under Land Development Ordinance, as follows.

District	No. of Diagrams Issued	
	2012	2013
Kandy	462	693
Matale	757	684
Nuwara Eliya	398	668
Anuradhapuraya	1892	1787
Polonnaruwa	6674	1159
Vavuniya	434 #	1497
Kilinochchi	-	100
Jaffna	655	277
Batticaloa	510	1818
Trincomalee	1763	1342
Kurunegala	594	953
Puttalama	860	3003
Ratnapura	724	269
Kegalle	132	251
Galle	477	940
Matara	552	471
Hambantota	1710	899
Badulla	373	582
Monaragala	759	1022
Ampara	1416	1815
Colombo	38	74
Gampaha	78	147
Kalutara	288	349
Total	21,546	20,800

\*Including Mannar District

## 6.2 Performance of the Geodetic Survey Branch

The progress achieved in the establishment of control points and in other surveys by the Geodetic Survey unit established in the Institute of Surveying and Mapping-Diyatalawa and the Geodetic Survey Unit established in Western Province (Head Office) , North Western Province and Southern Province affiliated to it, is shown in Para 6.1, and such activities are given in Para 8.2 in details.

## 6.3 Mapping

- ❖ Another important element of the departmental role is production of topographical maps and different types of thematic maps that require for development activities . Maps showing the data required for certain projects are issued on the request of the client. Air Photos and Digital Maps can be purchased as CDs from the Head Office at Narahenpita.
- ❖ All maps except air photos and digital maps can be obtained from Institute of Surveying and Mapping - Diyatalawa and all District Survey Offices.
- ❖ The following mentioned revenue has been earned by selling of printed maps and digital maps in this year.

	<b>Revenue (Rs.)</b>
Surveyor General Office	9,016,688.00
Mobile map sale	418,395.50
From Institute of Surveying and Mapping, Diyatalawa and District Survey Offices	137,385.00
<b>Total Revenue</b>	<b>9,572,468.50</b>

- ❖ Likewise, the maps valued, mentioned follows have been prepared for institutions and persons free of charge

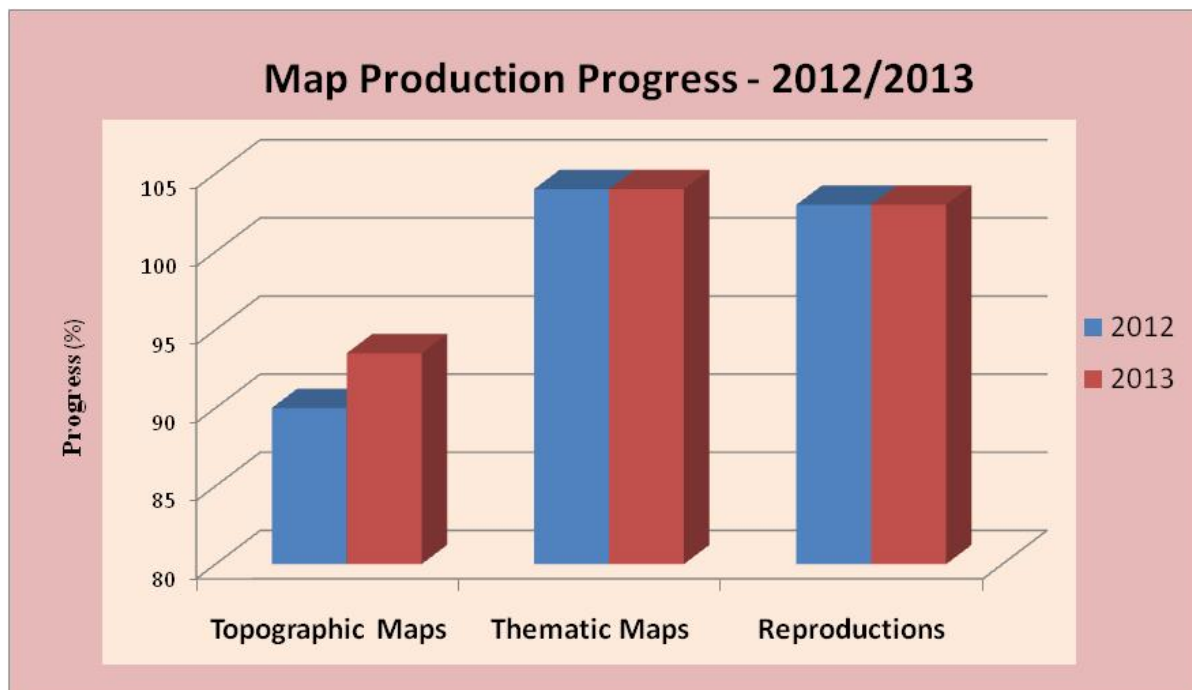
	<b>Worth of maps(Rs.)</b>
The amount for the maps prepared for the other institutions and persons from the mapping branch.	190,457.00
The total amount of money for the maps provided free of charge from map sale branch	137,900.00
Total value of maps provided free of charge as souvenir	170,576.00
Total value of the maps provided free of charge	498,933.00

<b>Accordingly, total value of map production in 2013</b>	<b>10,071,401.50</b>
---	----------------------

- ❖ Maps were sold at the concession price using the map sale mobile for the schools in Puttalm and Kurunrgala Districts as programs conducted concurrently to the program "Deyata Kirula". This provided the opportunity to students in schools undergo difficulties to buy maps at the concession price.

**6.3.1** In comparing with the previous year, percentages of the progress of each branch are illustrated in the following figure.

Maps	Units	Progress in Technician Months					
		2012			2013		
		Annual Target	Achieved Target	Target %	Annual Target	Achieved Target	Target %
Topographic Maps	Technician Months	204	183.3	90.0	197	184.2	93.50
Thematic Maps	Technician Months	216	225.66	104.0	195	230.64	104.0
Reproductions	Machine hours	2700	2772	103.0	3000	1875	103.0



6.3.2 The progress of the following maps completed during the year under review is also included in the above table.

Maps	Units	Progress in Maps					
		2012			2013		
		Annual Target	progress achieved	percentage according to target	Annual Target	progress achieved	percentage according to target
<b>Topographical Maps</b>	Maps	110	86	78	251	218	86.85
<b>Thematic Maps</b>	Maps	144	208	144	178	227	127.52

- Field verifications of 80 topographical Map sheets on the scale of 1:10,000 have been made and completed.
- Two topographical Map sheets on the scale of 1:50,000 are being prepared in the final stage of update, using satellite photographs.
- Map of Sri Lanka (Four Section Map - English) on the scale of 1:250,000 has been completed based on the digital data and litho printed. Final stage of Sinhala map is being prepared.
- Twelve District Maps using digital data, have been completed in 2013. Accordingly, the amounts of completed District Maps up to date are 24.
- Works of Road and Town Atlas have been completed in this year.
- Map of Colombo and suburb has been completed and litho printed.
- Works of Tourist Map of Kumana and small tourist map of Sri Lanka have been completed and litho printed.
- Likewise works of Western and Eastern Provincial Maps have been completed in this year.
- First volume of Sinhala and Tamil edition of National Atlas has been completed and second volume is being prepared in final stage.
- The amount of maps completed in 2013 free of charge on the requests of Government Ministries, Departments and other institutions, persons is 1151 and the finance value of these maps is Rs.498,933.00
- In addition to that, the department earns considerable income from sale of maps prepared on the requests of customers and the amount of such maps in 2013 is 164.

- Awareness programs on preparation of maps for the officers in defense services and university students have been conducted in this year too and such programs have been conducted for 7 groups.
- There is a great request for the map sale mobile lorry in different kinds of exhibitions and in this year, map sale mobile was used for 4 situations addition to the Deyata Kirula exhibition.



The Surveyor General hands over the first copy of the Volume 1 of second edition of National Atlas to H.E. President.



Opening of map sale centre in the premises of Ministry of Land and Land Development by his Excellency President

## 6.4 Geographical Names Branch

- ❖ This is the most recently established branch in the Survey Department aiming at Standardization of Geographical Names used in the maps and other documents and also in the Geographical Information databases.
- ❖ It has long been identified the need for Standardization of Geographical Names in order to cater the requirements of Geo-Information community by providing correct names along with up to date high accurate maps to the geo information users.
- ❖ Since the need for a national programme for Standardization of Geographical Names would achieve an overall savings of government resources, this new branch was established in order to fill this longstanding gap.
- ❖ The Cabinet of Ministers gave formal approval on 2009.09.08 for establishment of a committee for Standardization of Geographical Names in Sri Lanka.
- ❖ The Department of Management Services of the Ministry of Finance & Planning gave approval to create a new Deputy Surveyor General post for Standardization of Geographical Names from 2011-01-01 but, the branch was officially established 2012-02-16 due to administrative reasons.
- ❖ Since the inception of the branch in February 2012, a cabinet paper was prepared for obtaining approval for the establishment of the 10 member committee for Standardization of Geographical Names headed by the Surveyor General comprising representatives from Ministries of Home Affairs & Cultural Affairs, Department of Archeology & National Languages, Academics of University of Grants Commission and senior staff of the Survey Department. The activities of the committee will be

- Establishment of principles that constitute the fundamental doctrines used for guiding the national standardization
  - Establishment of the policies or rules covering specific details devised to deal with problems and the means of implementing standardization.
  - Establishment of procedures and methods for carrying out names standardization.
- ❖ A Project Concept paper was also prepared for Standardization of Geographical Names in Sri Lanka, which is now before the Department of National Planning trying to obtain funding sources.
  - ❖ Another request was sent to the Department of Official Languages for establishment of Romanization system for Sinhala language. Although the majority of the Geographical Names have been originated from Sinhala language, since most of the maps, official documents and digital databases have been written in Roman alphabet.
  - ❖ One of the activities for the branch is to provide country reports to the United Nations Group of Experts (UNGEGN) and the bi annual UNGEGN Bulletin. A country report was published in the UNGEGN Bulletin Number 44 released in May 2013.
  - ❖ A Gazetteer prepared in the office of Geography, Department of Interior , Washinton D.C, in June 1960 containing about 29,600 entries for places and features in the country based on 1 Inch topographic map series has been converted into digital form.
  - ❖ Names of 331 DS Divisions in all three languages has also been prepared digitaly. A digital Gazetteer was prepared to include 14022 number of GN Divisions of which the names based on reports of Census 2012 in digital form. However this list contains 14025 GN Division names because the GN Division called "Ruwanpuraya" in Harispattuwa DS Division of Kandy District is located in 2 places, GN Division called "Pahala Kiyaduwa" of Malimboda DS Division in Matara District is also located in 2 places.
  - ❖ The regular activities in the branch at the moment, includes checking Geographical names in all three languages in newly prepared maps and datasets, preparation of reports to UNGEGN , preparation of Gazetteer in all three languages for different map scales.
  - ❖ The branch was temporarily located in the office of Senior Deputy Surveyor General (Mapping) with one Map Technological Officer as the staff and was shifted to a new location at the end of the year.

## **6.5 Document Management and Professional Standards Branch**

Many old plans are preserved in this Branch and its extracts are issued at the request of the public. And also, after the completion of land settlement activities, preparation of Final Village Plans are carried out by this Branch. The progress of this Branch in the year 2013 is as follows.

### 6.5.1 Issue of Copies of Title Plans and Other Plans

Number of copies of Title and other Plans issued - 2228  
 A sum of Rs. 1,174,692.00 has been collected by issuing these copies.

### 6.5.2 Tracings and Diagrams issued by the District Survey Offices

Number of Settlement Diagrams issued	-	1094
Number of diagrams issued (O and V)	-	1618
Lease Diagrams (L Diagram)	-	612
Tracings issued to Public	-	7947
No. of Certified Copies issued to the Public.	-	8926
No. of Diagrams issued under the Land Development Ordinance	-	(Please see 6.1.1)

A sum of **Rs. 1,319,139,439** has been collected by issuing copies of plans.

### 6.5.3 Court Commission Surveys

Balance brought forward from last year	-	407
Number of commissions received from courts	-	542
Completed and sent to courts	-	498
Balance at the end of the year	-	451

### 6.5.4 Preparation of Final Village Plans and Final Topographical Plans under the Land Settlement Ordinance.

Balance brought forward from last year	-	67
The number received in the year 2013	-	28
No. of Final Village Plan and Final Topographical Plans prepared and issued	-	60
Balance at the end of the year	-	35

### 6.5.5 Updating of Old Records as per newly prepared Plans

Balance brought forward from last year	-	3195
The number received in the year 2013	-	8523
Number of old Preliminary Plans updated	-	1823
Number of Final Village Plans and Final Topo.Plans	-	2952
Number of Topographical Preliminary Plans and Village Plans	-	594
Number of Cadastral Maps	-	4044
Balance at the end of the year	-	2235

### 6.5.6 Preservation of Old Plans

Under the Old Plan Preservation Programme, scanning and storing them in the digital form were commenced in the year 2004. Accordingly, progress is as follows.

Category	No. of Plans/Field Sheet to be completed	No. of completed at the end of year	No. of completed in the year	Balance
Title Plans	461,558	113,119	13,853	334,586
Field Sheets	71,425	25,937	13,644	31,844
Preliminary Plans	100,626	-	-	100,626

**6.5.7 Providing particulars required for Surveys (L96) – 7163 lots.**

### 6.5.8 Issuing Certificate of Accreditation

Under the Title Registration Act of 1998, a certificate of accreditation with regard to the competency of the surveyor in carrying out the Cadastral Surveys will be issued to the registered surveyors who wish to carry out Cadastral Surveys.

Number of Registered Licensed Surveyors at the end of year 2013	1975
Number of Surveys obtained Accreditation Certificates at the end of the year 2013	1262
Number of obtained in 2013	35
Total number of Surveyors obtained Accreditation Certificate at the end of year 2013	1297

## 7.0 Land Information Systems /Geographic Information Systems Branch

### 7.1 Air Surveys

#### Photo Laboratory and Photogrammetric Section

Related progress is as follows.

<i>Type</i>	<i>Unit</i>	<i>Progress</i>
Printing of Contact Prints	Units	3246
Positive Films	Units	17
Scanning of Aerial Photographs (100 μ) (Preservation of old photographs)	Units	40
Scanning Aerial Photographs (40, 25 μ -Back& White)	Units	7489
Scanning Aerial Photographs (40, 25 μ -Back& Colour)	Units	1374
Scanning Aerial Photographs (7.5 μ, 20 μ )	Units	41
Photogrammetric Plotting (1:10,000)	km <sup>2</sup>	3150.39
No.of Sheets Completed (1:10,000)	Sheets	102.5

## 7.2 Remote Sensing Section

- The progress of digital data system of the series of New Maps which is being prepared pertaining to the series of 1:50,000 new Topographical Maps which consist of 92 sheets, is as follows.

1 <sup>st</sup> Level	2 <sup>nd</sup> Level	3 <sup>rd</sup> Level
Entering the topographical data to the digital database without using of high resolution satellite images and field verification. Initially, this method was implemented and afterward completion of works of 33 sheets this will be implemented only under the level 2 and 3.	Entering the topographical data to the digital data base using of high resolution satellite images and without field verification. Works of 10 sheets were completed in year 2013. Accordingly, the total number of sheets completed - 37. In addition to this, comparing the tanks, rivers, channels, streams, water ways in 15 sheets of series of new topographical map with digital data relevant to the topographical map of 1:50,000 which is currently used, amendments applicable have been made.	Entering the topographical data to the digital database using of high resolution satellite images and field verification. Works of 06 sheets were completed in year 2013. Accordingly, the total number of sheets completed is 22.

In addition to that, New topographical digital data of 1: 50,000 relevant to the road system of Sri Lanka prepared in 2013 using high resolution satellite images were examined with the specifications of road A and B of Road Development Authority and amendments applicable were made and entered into the database.

### **Following special tasks have been fulfilled by this section on the requests of the other organizations.**

- A map showing paddy areas in Polonnaruwa District using satellite images on the request of District Coordinating Committee of Polonnaruwa, was prepared.
- A map showing the topographical coordinates and details of Grama Niladhari Divisions of Mattala airport security area for regulatory functions pertaining to the proposed Mattala airport was prepared.
- A map was prepared on the request of the Investment Board to define the tourism zone in Mulativu coastal belt for the development activity of Northern part of Sri Lanka.
- A map was prepared showing the changes of homesteads in Jaffna Peninsula during the period from 1983-2007 on the request of the secretary of the Ministry of Land & Land Development.

## 7.3 Land Information Systems

The main task of this branch is to enter the digital data of the plans produced in the Field into the Land Information System.

## Progress

	No. of blocks inserted into the Data Base	No. of lots inserted into the Data Base
Progress in 2013	716	145,243
Total Progress at the end of the year 2013	3,456	679,095

Besides, combining all survey blocks which have now been completed at Balangoda, Medirigiriya, Siyabalanduwa and Tissamaharama Divisional Secretariats so as to cover such Divisional Secretariat, the database was updated as seamless dataset.

(Database was updated in year 2012 as seamless dataset Ratmalana and Homagama Divisional Secretariats)

## 7.4 Geographical Information System

The progress of this branch in the year 2013 is as follows

Activities	unit	2012		
		Annual Target	progress achieved	percentage in relation to Target
Creation of 1:10,000 New Sheets	Sheets	72	91	126.4
Creation of New 1:10,000 Sheets under incentive programme		60	60	100.0
Updating of 1:10,000 Sheets	Sheets	90	90	100.00
Creation of 1:10,000 Geo-database	Sq.km	60	58	96.7

Preparation and maintenance of Digital Topographical database on the scale of 1:10,000, using printed maps, photogrammetric and mapping datasets is done by this branch. We have now completed 1151 sheets (151 new sheets and 90 updated sheets were added to the database during the year 2013) into Arc GIS data format for GIS users. This data contains 8 basic layers such as Administrative Boundaries, Buildings, Grid, Hydrology, Land Use, Place Names, Terrain and Transport. All the features in these layers have been coded to five digit GFCODE and unique to each feature.

This year we engaged with on Northern Province data collection activities under the incentive programme. The revisions have been made by the newly established database revision unit with the coordination of the field. This unit consists of Surveyors, Map Technological Officers, and Photogrammetric Technicians.

The following special activities have been fulfilled by this Branch.

- GN boundaries were updated in preparation of Maps for the National Delimitation Committee.
- Coordination of the work of testing of the LiDAR survey vertical accuracy report.
- Preparation of python programs for maintenance of the Digital Topographic Database

Topographical information for various development projects could be obtained from 1:10,000 scale topographical data base whenever necessary. Particulars regarding various formats from which such sheets could be obtained are given in annexure 10.

## 7.5 Conferences/Workshops and Misc. Activities

### ❖ Geo-spatial Forum – Sri Lanka , 6<sup>th</sup> June 2013

This conference, all the stakeholders of geo-special community in Sri Lanka including users of technologists, academicians and policy makers brought together is the first conference in Sri Lanka and the Survey Department co-organized it.



Different occasions of the programme –  
Geo-spatial forum held in Cinnamon  
Grand Hotel on 6<sup>th</sup> June 2013.

### ❖ Jaxa Mini Project -2013

The first phase of the Jaxa Mini Project was organized by the Survey Department and 14 organizations participated for 5 days workshop.



First step of mini project of Jaxa 2013, was conducted in the auditorium of Survey Department and one occasion of that.



The officers who participated to the mini project Jaxa 2013 from different institutes including the Survey Department.

- ❖ Jaxa sponsored to held Open Street Map training programme for three days at Institute of Surveying and Mapping, Diyatalawa for Apprentice Map Technological Officers in order to disseminate the new technologies used for data collection.
- ❖ Work as a member for the REDD<sup>+</sup> project that conducted by the Forest Department under the Ministry of Environment and Renewable Energy.

## 8.0 Survey Training Institute – Diyatalawa

### Introduction

The Survey Training Institute accomplished its target for the year 2011 in accordance with the annual programme, fulfilling its mission by providing a high quality education and experience in the field of Surveying and Mapping to students enabling them to achieve their full academic potential. Furthermore, the Institute conducts Degree Courses and Higher Diploma Courses, Trains Surveyors, Map Technological Officers, Photogrammetric Technicians, Aerial Photograph & Laboratory Technicians, Remote Sensing Technicians and other technicians in the department and also conducts Departmental annual examinations. This institute functions under Snr. Deputy Surveyor General (Training) / Director (I.S.M.)

## 8.1 Courses conducted by the Survey Training Institute during the year

### 8.1.1 Regular courses conducted during the year

Serial Number	Name of Course	Duration	Date commenced	Date Completed / Due to be completed	Number of participants
1	Bachelors Degree Course - 12 (B.D.C.12)	4 Years	2011.10.03	2015.10.02	111
2	Higher Diploma Course in Surveying (Distance Education) – 28 (H.D.C. 28)	1 ½ years	2011.12.12	2013.06.11	36
3	Diploma Course For SLTS - 05 (S.L.T.S. 05)	2 Years (One year field training is included)	2011.02.01	2013.01.31	08
4	Diploma (Advance Level) Course For SLTS - 06 (S.L.T.S. 06)	2 Years	2013.03.04	2015.03.03	43

### 8.1.2 Short Term Courses conducted for Departmental Staff

Serial No.	Name of the Course	Duration	No. of Participants	No. of Groups
1	Training on Cigas for Assistant Director (Finance) and Management assistant officers	2 Days	106	2
2	Job Orientation Programme for newly appointed Superintendent of Surveys	5 Days	34	1
3	Training on Technical & Administrative procedures for Senior Map Technological officers	5 Days	40	2
4	Leica Total Station Training Programme for Government Surveyors	2 Days	44	1

### 8.1.3 Short Term Courses conducted for the other agencies

Serial No.	Name of the Course	Duration	No. of participants	No. of Groups
1	Profile survey and handling of survey equipment for supervising officers of Ceylon Electricity Board	02 days	20	1
2	Training Programme for Survey Assistants of Sri Lanka Air Force	10 days	8	1
3	Work Shop on Map Reading and GPS for Cadet Officers - Sri Lanka Air Force, Diyatalawa	02 days	24	1
4	Work Shop on Map Reading for officers of Sniper School, Diyatalawa	02 days	50	1
5	Survey Field Assistant Training Programme (NVQ Level 2/3/4) of Vocational Training Authority	10 days	411	5
6	Training session on GPS & GIS for Special Task Force officers	10 days	36	1
7	Training Programme for survey assistant of Southern Provincial Land Commissioner's Department	10 days	7	1
8	Work Shop on Modern Survey Equipments for Civil Engineering students of Technical College - Monaragala	01 days	35	1
9	Work Shop on GPS for Uva province Irrigation Engineers of Irrigation Department	01 days	18	1
10	Work Shop on Map Reading and GPS for Airmen and Airwomen Gunner Instructor of Sri Lanka Air Force - Diyatalawa	01 days	22	1
11	Training Session on Map Reading and GPS Activities for Divisional Secretariat Officers of Southern Provincial	01 days	80	2
12	Work Shop on Map Reading and GPS for officers of Department of Meteorology	02 days	40	1
13	Training Session on GPS Activities for Trainee Engineers of Bandarawela Irrigation Department	01 days	27	1
14	Survey Camp for Civil Engineering Students of Institute of Engineering Technology - Katunayake	06 days	142	2
15	Training Programme for Land Officers of North Central Provincial Land Commissioner's Department	02 days	29	1
16	Work Shop on Surveying & Levelling for Engineers of North Western Provincial Road Development Department	04 days	40	1
17	Work Shop on Map Reading, Total Station and GPS Activities for officers of Sri Lanka Artillery - Minneriya	02 days	18	1

Besides, 15 one-day workshops have been conducted for other organizations and 896 participants have participated for them.

## 8.2 Performance of the Geodetic Survey Unit in the year 2013

The progress of setting out of control points and the other surveys carried out by the Geodetic Survey Unit established at ISM - Diyatalawa, and Geodetic Survey Unit established affiliated to it at Western Province, North Western Province and Southern Province is shown in 6.1 and such activities are given as follows.

### 8.2.1 Establishment of Control Points

Task	ISM	W.P.	N.W.P	S.P.	TOTAL
GPS control points	3095	942	1380	140	5557
GPS control points equivalent for other surveys	4771	0	716	155	5642
Total No. of Control points established	7866	942	2096	295	11199
Equivalent survey months for control points established	123.80	37.68	55.20	5.60	222.28
Equivalent survey months for other surveys	190.84	0	28.63	6.20	225.67
Total survey months for year 2013	314.64	37.68	83.83	11.80	447.95
Progress (%)	303	65	182	91	203

### 8.2.2 Other Survey Work

Se.No	Activity
1	Carrying out of control surveys for the step 1, step2, step 2B and step3 of the project of northern highway.
2	Setting out of control points for the step 1, step 2B and step 4 of the project of northern highway.
3	Carrying out of control surveys for the project of southern highway.
4	Carrying out of control surveys in Anuradhapura and Polonnaruwa districts for the project of Ihala Elahera.
5	Setting out of G.P.S. control points for the projects of Pahala Uma Oya, Heen Ganga and Kurei proposed to carry out by Irrigation Department.
6	Setting out of G.P.S. control points and topographical surveys for proposed Kandy-Digana internal airport.
7	Preparation of maps showing the areas suitable for development of sugar-cane industry in north province for the Ministry of Sugar Industry Development.
8	Setting out of G.P.S control points for the preparation of cadastral maps for the estates under administration of the Ministry of Forest Survey and Plantation Industry in Nuwara Eliya District.
9	Providing of Aerodrome information by G.P.S observation for aircraft runner ways in 11 air ports which belong to Sri Lanka Air Force.
10	Setting out of G.P.S. control points for water supply projects in Kandy and close by on behalf of National Water Supply and Drainage Board.
11	Setting out of G.P.S. control points for Horana-Kandana 33 KV electric cable road on behalf of Ceylon Electricity Board.

<b>12</b>	Setting out of G.P.S. Ground control points and carrying out of detailed survey in Hambantota District for RIMES Tsunami Disaster Management Project launched by Center of Disaster Management.
<b>13</b>	Setting out of G.P.S. control points in roads of Haldummulla - Haputale, Udupussellawa - Dambagolla, Brukside - highforest, Adhikarigama - Hanguranketa, Hikkaduwa – Baddegama - southern high way, Bodagama – hambegamuwa - Kaltota, Haputale-Boralanda, Hakgala - Fort Mackdonald, Yakawewa - Mahakongaskada, Kegalle by-road for road widening and development works.
<b>14</b>	Setting out of secondary level control points in Ampara District under the program of extension of primary G.P.S. control network.

#### 8.2.2.2 Special surveys carried out in the year - Special Survey Unit of North Western province

<b>Se.No</b>	<b>Activity</b>
<b>1</b>	Setting out of G.P.S. control points for projects of Randiwela and Kospotu Oya
<b>2</b>	Setting out of 31.9km center line for proposed Kurunegala-Habarana railway line
<b>3</b>	Obtaining of G.P.S. data for mapping out of archaeological locations in north-western province for the exhibition of Deyata Kirula 2014
<b>4</b>	Setting out of G.P.S. control points for widening and development of A9 road in Matale town and surrounding and development of Kegalle by roads and town.
<b>5</b>	Setting out of G.P.S. control points for the project of coastal conservation in Kinniya-Upparu area.
<b>6</b>	Setting out of G.P.S. control points for Kurunegala town water supply project.
<b>7</b>	Setting out of G.P.S. control points for Dehiowita-Deraniyagala-Nuri road, Kahawatta and Kegalle by-roads.
<b>8</b>	Setting out of secondary level control points - Kurunegala, Putlam, Trincomalee, Anuradhapuraya, Matale and Kegalle Districts under the program of extension of primary G.P.S. control network.

#### 8.2.2.3 Special surveys carried out in the year - Special survey Unit of Southern Province

<b>Se.No</b>	<b>Activity</b>
<b>1</b>	Preparation of contour plan with detailed survey of an area of 80 hectares for Baddegama Town Development Project.
<b>2</b>	Surveys carried out to stabilize the titles on both sides of proposed road of 27km from Matara to Beliatta for proposed Matara-Kataragama railway.

### 8.2.3.1 Precise Levelling - Geodetic Branch, Diyatalawa

Se. No.	Activity
1	Obtaining of precise levelling in apron parking stands at air craft in Mattala Mahinda Rajapaksha air port.
2	Setting out of bench marks at Badulla District for Uma Oya Multipurpose Project.
3	Setting out of bench marks for Basnagoda reservoir project.
4	Setting out of bench marks for rehabilitation activities of Ampara, Tampitiya tank
5	Precise levelling for surveys of northern highway, southern highway and Ihala Elahera Ela

### 8.2.3.2 Precise Levelling -North Western Special Survey Unit

Se. No.	Activity
1	Establishment of precise level line for Kurunegala town water supply project.

## 8.3 Examinations conducted by the Examination Branch in the year 2013

No.	Name of Examination	No. of Applications Received	No. of Applications Eligible	Exam Held on/ To be held on (Date)	No. of Candidates Present	Results issued on	No. of Passes	No. of Referred	Total Expenditure (Rupees)	Expenditure Per Candidate (Rupees)
01	Departmental Examination for the Promotion from Class I to Selection Grade of Instrument Technicians	01	01	2013/03/30	01	2013/05/31	01	-	11200.00	11200.00
02	First Departmental Examination for the Promotion from Class II 'B' to Class II 'A' of Sri Lanka Technological Service Officers (For Map Technological Officers)	12	12	2013/06/29-30	10	2013/09/17	06	04	44470.00	2615.00
03	First Departmental Examination for the Promotion from Class II 'B' to Class II 'A' of Sri Lanka Technological Service Officers (For Photogrammetric Technicians)	06	06	2013/06/29-30, 2013/07/01-02	06	2013/09/17	04	02		

04	Examination for the Issue of Surveyor General's Certificate as Authorized Draughtsman – Part I (Gazette on April 2013)	215	127	2013/07/20	85	2013/09/18	20	65	44950.00	354.00
05	Second Departmental Examination for the Promotion from Class II 'A' to Class I of Sri Lanka Technological Service Officers (For Map Technological Officers)	08	02	2013/09/28-29	All candidates were absent.				31680.00	15840.00
06	First Efficiency Bar Examination for Officers in Class II, Grade II of Sri Lanka Surveyors' Service	77	76	Mid/Late September	Scheduled to be held on January 2014				-	-
07	Examination for the Issue of Surveyor General's Certificate as Authorized Draughtsman – Part II (Gazette on April 2013)	-	20	2013/10/26-27	18	2014/01/06	08	10	33400.00	1670.00
08	Practical Examination (Surveying & Levelling) for Technical Officers in Public Service & Provincial Public Service 2005 to 2009 (2010) Part III (Group - I)	68	68	2012/10/01 – 2012/12/22	54	2013/08/29	72	26	-	-
09	Practical Examination (Surveying & Levelling) for Technical Officers in Public Service & Provincial Public Service 2005 to 2009 (2010) Part III (Group – II)	104	104	2013/01/01 – 2013/06/08	68					
10	Examination for enrollment of departmental candidates for the Bachelor of Degree (Surveying Science) course	08	08	2013/04/21-22	07	Results not yet issued			9000.00	1125.00
11	Open Competitive Examination for Recruitment of Sri Lanka Technological Service Officers	-	545	2013/12/07	425	2013/12/19	225	200	120000.00	282.00

## 9.0 Research and Development Branch

The main role of this branch is to identifying the weak areas which affects the progress of the department and to making of proposals to overcome them, development of software which require for the survey and mapping in the department , training of officers for new technology, to preserving of the quality specification of the departmental maps and plans. Through this, it is expected to fulfil the conversion procedure of substitution of digital technology to the department, properly. Making Departmental Survey Regulations/ Standing Orders amend appropriately and publishing in Survey Journal is another role fulfilled by this branch. Development of below mentioned software and project related with them have been carried out by this branch in 2013 to fulfil the above mentioned requirements totally.

### 9.1 Software development

Taking action to obtain SDCAD software to Government Surveyors and Licensed Surveyors.

### 9.2 Survey Journal/ Standing Orders/ Departmental Survey Regulations

- i. Publish of Survey Journal issue 82.
- ii. New Edition of Standing Orders in three languages has been completed.
- iii. 80% of Sinhala, 60% of English and 60% of Tamil translation of Departmental Survey Regulation has been completed.

### 9.3 Deyata Kirula National Development Exhibition

An exhibition stall for Deyata Kirula National Development Exhibition -2013 held at Amapara has been organized and conducted successfully (Including the new equipment and survey camp exhibition.)



Stalls presented by the Survey Department to the Deyata Kirula exhibition held at Amapara in 2013.

## 10.0 Title Registration Survey Branch

In terms of the Title Registration Act No 21 of 1988, in view of issuing titles for all government and private lands situated in Island, the cadastral maps and cadastral plans that require under the Program Bimsaviya, implemented by Ministry of Land and Land Development, are prepared by the department. These surveys are carried out by the field staff of the department and co-ordination of this activity is carried out by the Title Registration Survey branch of the Surveyor General office.

Although the preliminary actions have been taken by the Ministry of Land and Land Development to initiate the works of 90 of Divisional Secretariat Divisions under the Bimsaviya program up to 2013, the department was able to complete surveying works only in 54 divisions. Eight divisions, out of 54 divisions belong to Northern and Eastern provinces and surveys were carried out only in connection with state lands in this year.

Further, since the provision was inadequate, employment of private surveyors was impossible as intended and since time was taken, receiving of information of lands to be surveyed, to be systematic, in terms of methodologies of implementation of new program introduced in 2013, employment of number of government surveyors as intended, continuously was impossible. Accordingly, less number of lots than the previous year was surveyed.

That is to say, surveying of 74,762 of parcel of lands were carried out by the Government Surveyors, made the contribution in this year and 35,868 of parcel of lands were carried out by Licensed Surveyors and cadastral maps of total amount of 110,630 have been prepared.

The workshop of issuing of accreditation certificates require for Registered Licensed Surveyors who intend to undertake surveys under the Title Registration Act was conducted. As well actions have been taken to provide resource persons for workshops conducted to make the public and other outside institutions aware of the survey programme of title registration.

An expense of Rs. 506.191 million of the provision allocated for the year 2013 under the Bimsaviya program has been incurred by this department. Works of making improvements in buildings in Ratnapura, Gampaha, Kandy, Monaragala, Matale, Kurunegala, Badulla, and Hambantota district offices, initiated in the previous year, on the requirement of making improvements in District Survey Offices to comply with in implementation of Bimsaviya programme Island wide, were completed.

The areas where the Bimsaviya Programme was implemented in the year 2013 is shown in annexure 10.

## 11.0 Auditing

A separate Unit has been established in the Department by the Government Auditor General's Department in order to audit the activities of the Department and in addition, to that, audits are carried out by the Internal Audit Branch as well.

## Internal Audit Branch

The Internal Audit Unit is functioning under the direct supervision of the Surveyor General. All audit inspections were carried out based on the audit programme planned for the year 2013 with the concurrence of the Surveyor General, Director General (Management Audit Department) and the Auditor General. In this connection, special attention was paid to the treasury circular No. IAI/2001/1 and to the instructions of the Management Audit Department and special attention was paid to the system analysis and performance analysis rather than the usual financial auditing, so as to increase productivity performance of the Department thereby.

Accordingly, 24 audit checks, including 06 Provincial Survey Offices, 14 District Survey Offices and 04 special inspections in Head Office were completed successfully. According to the information revealed in the audit, it shall be mentioned that considerable improvement was observed in financial and institutional management.

## 12.0 Progress Branch

Mainly following tasks carried out in this Branch.

### 12.1 Performance Report.

Performance Report of Surveyor General's for the year 2012 has been prepared and distributed.

### 12.2 Distribution of daily mail.

Distribution of daily mail was carried out regularly and smoothly throughout the year. Thereby facilitating the smooth function of the Administration was facilitated.

### 12.3 Distribution of Circulars

Following circulars issued by the Surveyor General have been printed and distributed among the departmental staff during the year. These circulars are sent by post who are in various places in the country.

Type of the Circular	Number of Circulars
Superintendent Circulars	01
Superintendent Circular Letters	04
Supervising Circulars	03
Supervising Circular Letters	07
Field Staff Circulars	04
Field Staff Circular Letters	24
Office Staff Circular	01
Office Staff Circular Letters	32

#### 12.4 Study Tours/Educational Sessions

Progress Branch provides facility for officers belongs to security forces and University students to study the various activities of the Department. During the year under review, 15 educational sessions were held for the Security forces and University students.

### 13.0 Other Related Matters

#### 13.1 Security and Janitorial Services

These services are provided by private sector agencies for the whole year under review, with the supervision of the Department. The Reliable and Alert Security Service (Pvt.) Ltd. is engaged to provide security and maintain the office environment neat and tidy, whereas the Nipuni Cleaning Service (Pvt.) Ltd. is contributing to preserve the scenic beauty of the Department premises. All their services are appreciated.

#### 13.2 Welfare of the Staff

Welfare for the staff has been afforded through the welfare officers appointed representing various services of the staff. In addition to the normal welfare activities, the following special services have been provided.

1. On the New Year Day of January 1<sup>st</sup> prior to assumption of work in the Department, Pirith Chanting Ceremony was held.
2. A Sinhala and Hindu New Year Festival was held with the participation of the staff and prizes were distributed to the winners.
3. Facilitated the staff to buy Electrical appliances, shoes, drapery items, books etc. at concessionary rates on the credit basis for Sinhala and Hindu New Year and at the end of year.
4. The day care center for the children of the staff continues to function with improved facilities.
5. Maintaining a retail outlet during lunch break at concessionary rate and maintenance of the welfare canteen.
6. Stimulated the mental sensitivity of the staff by celebration Vesak and Nawarathri festivals and presenting Annual Musical Extravaganza.
7. Held medical clinics and counseling for benefit of the employees.
8. Provided necessary medicine for first aid boxes maintained at the various branches in the Department.

In addition to that, a Co-operative Thrift and Credit Society, a Sports Club, a Reading Room and a Library are managed successfully by the staff themselves.

## 14.0 Conclusion

In addition to Fulfilling the targeted tasks as planned for the year under review the department was able to carry out the emergency surveys and maps requirements that require for the development project of government and social welfare activities and to achieve the progress of the survey up to 148% of higher value. It can be considered as a result achieved on the cooperation of the staff in all ranks. I highly appreciate the cooperation received from the officers of the Ministry of Land and Land Development, Departmental Unions and all the staff, in carrying out this function.

Furthermore, it is mentioned that the service rendered by Mr. S.M.W. Fernando and Mr. K. Thavalingam retired as Surveyor Generals on 25-07-2013 and 06-03-2014 respectively, to achieve to such a progress in the year under review and to develop human and physical resources in the department, should be appreciated especially.

Nihal Gunawardena  
Surveyor General

## Annexure 01

## Staff

Serial No.	Designation	Approved Cadre	Available Staff Last Year	Retirement	Transfers		Recruitments	Promotions	Staff at the end of the year
					Out	In			
1.	Surveyor General	01	01	-	-	-	-	-	01
2.	Addl. Surveyor General	03	03	02	01@	-	-	03	03
3.	Senior Deputy Surveyor General	05	05	-	03@	-	-	03	05
4.	Deputy Surveyor General/Provincial Surveyor General	15	15	01	03	-	-	04	15
5.	Snr. Supdt. of Surveys	60	60	-	04@	-	-	04	60
6.	Supdt. of Surveys	139	19	-	04@	-	-	03	22
7.	Asst. Supdt. of Surveys/Surveyors/ Apprentice Surveyors	850	701	20	03@	-	-	-	678
8.	Chief Technical and Administrative Officer	01	01	-	-	-	-	-	01
9.	Map Production Officer	01	01	-	-	-	-	-	01
10.	Technical and Administrative Officer	44	33	03	-	-	-	-	30
11.	Snr. Map Technological Officer - Special Grade	56	43	01	-	-	-	-	42
12.	Map Technological Officer- I,II,III & Training Grade	574	244	08	-	-	86	-	322
13.	Navigator	01	01	-	-	-	-	-	01
14.	Photogrammetrist	01	01	-	-	-	-	-	01
15.	Photogrammetric Technician – Special Grade	04	02	-	-	-	-	-	02
16.	Photogrammetric Technician – I, II, III	26	24	01	03	-	07	-	27
17.	Remote Sensing Technician – Special Grade	01	01	-	-	-	-	-	01
18.	Remote Sensing Technician – I, II, III & Training Grade	13	07	-	-	-	-	-	07
19.	Air Photo Lab Technician – Special Grade	01	01	-	-	-	-	-	01
20.	Air Photo Lab Technician –I, II, III & Training Grade	06	03	-	-	-	02	-	05
21.	Litho Printers – Special Grade	03	03	-	-	-	-	-	03
22.	Litho Printer – I, II, III & Training Grade	15	11	-	01	-	-	-	10
23.	Plan Typographer – Special Grade	01	01	-	-	-	-	-	01
24.	Plan Typographer – I, II, III & Training Grade	07	03	-	-	-	-	-	03
25.	Transport Officers	01	-	-	-	-	-	-	-
26.	Information Technology Assistants	09	03	-	02	-	-	-	01
27.	Data Entry Operator	02	01	-	-	-	-	-	01
28.	Data Operator	21	20	-	01	-	-	-	19
29.	Legal Officer	01	-	-	-	-	-	-	-
30.	Legal Assistant	02	02	-	-	-	-	-	02

Serial No.	Designation	Approved Cadre	Available Staff Last Year	Retirement	Transfers		Recruitments	Promotions	Staff at the end of the year
					Out	In			
31.	Programmer III	01	-	-	-	-	-	-	-
32.	System Operator	02	01	-	-	-	-	-	01
33.	Building Supervisor	01	-	-	-	-	-	-	-
34.	Survey Instrument Technician - Selection Grade	02	01	-	-	-	-	-	01
35.	Survey Instrument Technicians – I, II, III	15	09	-	-	-	-	-	09
36.	Carpenter I/II	09	02	-	-	-	-	-	02
37.	Welders	01	01	-	-	-	-	-	01
38.	Tools Labourer	04	-	-	-	-	-	-	-
39.	Lorry Cleaners	07	04	-	-	-	-	-	04
40.	Map Mounter & Book Binder	04	02	-	-	-	-	-	02
41.	Plan Repairer	07	06	02	-	-	-	-	04
42.	A/C Technicians	01	-	-	-	-	-	-	-
43.	Masons	01	-	-	-	-	-	-	-
44.	Circuit Bungalow Keepers	05	02	-	-	-	-	-	02
45.	Dark Room Assistants	04	03	-	-	-	-	-	03
46.	Photocopy Machine Operators	02	01	-	-	-	-	-	01
47.	Departmental Labourers	170	160	01	-	-	-	01	160
48.	Motor Mechanic	02	-	-	-	-	-	-	-
49.	Addl.S.G.(Human Resources and Administration)	01	-	-	-	01	-	-	01
50.	Snr.Deputy Surveyor General (Administration) –SLAS 1	01	01	-	01	-	-	-	-
51.	Deputy Director/Asst. Director (Administration)	02	-	-	-	-	-	-	-
52.	Director (Finance)	01	01	-	-	-	-	-	01
53.	Asst. Director (Finance)	12	08	-	01	-	-	-	07
54.	Internal Auditor	01	01	-	-	-	-	-	01
55.	Translators	01	01	-	01	01	-	-	01
56.	Assistant Translator	01	-	-	-	-	-	-	-
57.	Administrative Officer (P.M.A.S. – Supra Grade)	01	01#	-	-	-	-	-	01
58.	P.M.A.S.1//11/111	488	408	7	11	10	-	-	400
59.	Drivers Service I/11/111	276	263	6	7	2	-	-	252
60.	Karyala Sevaka Service I/11/111	207	100	6	7	20	-	-	107
61.	Survey Field Assistant Special	4154	2801	123	-	-	-	-	2678
62.	Survey Field Assistant Grade I								
63.	Survey Field Assistant Grade 11								
64.	Survey Field Assistant Grade 111								

@ promoted #contract basis

## Annexure 02

## Establishment Work

Serial No.	Description	Previous Year 2012			Current Year - 2013		
		No. Received	No. Approval	Balance	No. Received	No. Approval	Balance
1	Recruitments	145	137	08	495	884	389
2	Examinations held@						
3	Interviews held	03	03	-	08	08	-
4	Confirmation in posts	298	252	46	196	196	-
5	Promotions \$	293	293	-	86	86	-
6	Payment of increments	4238	4191	47	4808	4387	328
7	Extension of service	96	96	-	-	-	-
8	Preparation of scheme of recruitments	08	08	-	06	06	-
9	Vacation of post	06	06	-	36	36	-
10	Interdictions	02	02	-	02	02	-
11	Reinstate	08	08	-	02	02	
12	Disciplinary Inquiries	38	04	34	34	07	27
13	Approval of leave to go abroad	46	46	-	43	43	-
14	Foreign Scholarships#						
15	Cabinet Papers	01	01	-	03	-	-
16	Commencing of bonds	37	37	-	95	95	-
17	Release of bonds	-	-	-	-	-	-
18	Grant of loans - Property	36	36	-	19	19	-
	Vehicle	-	-	-	-	-	
	Others	616	134	518	315	148	463

@ For exams please see para 8.3 # Please see annexure 03

\$ Since absorptions are being processed under PL2 details of promotions of Survey Field Assistants have not been included here to.

*Anexure 03***Human Resources Development**

Participation of Survey Department for international training programs is given below.

**Foreign training and workshops – 2013**

	<i>Name of Scholarship</i>	<i>Name</i>	<i>Designation</i>	<i>Country</i>	<i>Period</i>	
1	KARI Internal Space Training Programme	Mr. J.M.P.P.Jayasooriya	Snr.S.S.	Korea	2013-04-22	2013-05-04
2	KARI Internal Space Training Programme	Mr. W.A.S. Wickramarachchi	Snr.D.S.G.	Korea	2013-04-23	2013-05-05
3	Chengdu Forum on United Nations Global Geospatial Information Management (UNGGIM)	Mr. M.A.K.Mallawarachchi	Prov. S.G.	China	2013-04-24	201-04-26
4	36 <sup>th</sup> GIG General Assembly	Mr. K.Thavalingam	Addl. S.G.	Nigeria	2013-05-06	2013-05-10
5	2013 – Cambridge Conference /UN – GGIM3/ISGGM)	Mr. K.W.N.D. Karunaratne	Addl. S.G.	Rome	2013-05-06	2013-05-10
6	G.T.C. Planning and Management of National Mapping & Surveying	Mr. P.M.P. Udayakantha	Addl.S.G.	China	2013-08-20	2013-12-21
7	Workshop on Survey Data Processing & DTM Generation	Mr. W.J.K.A.Nishan Prabath	Govt. Surveyor	Thailand	2013-07-22	2013-08-22
8	Workshop on Survey Data Processing & DTM Generation	Mr. S.D.K.Priyantha	Remote Sensing Technician	Thailand	2013-07-23	2013-08-22
9	Refresher Course “ One stop e-Government in Sustainable Land Administration	Mr. U.K.S.P.Wijesinghe	Snr.S.S.	Vietnam	2013-09-08	2013-09-21
10	Refresher Course “ One stop e-Government in Sustainable Land Administration	Mrs. K.K.B.N. Fernando	Snr.S.S.	Vietnam	2013-09-08	2013-09-21
11	Chengdu Forum on United Nations Global Geospatial Information Management (UNGGIM)	Mr.W.M.S.Weerasinghe	D.S.G.	China	2013-10-15	2013-10-17
12	FutureGOV Summit 2013	Mr.P.M.P. Udayakantha	Snr. D.S.G.	Thailand	2013-10-23	2013-10-25
13	34 <sup>th</sup> General Conference of Asian Association on Remote Sensing (AARS)	Mr. K.W.N.D. Karunaratne	Addl. S.G.	Indonesia	2013-10-20	2013-10-24
14	35 <sup>th</sup> General Conference of Asian Association on Remote Sensing (AARS)	Mr. Nihal Gunawardena	Addl. S.G.	Indonesia	2013-10-20	2013-10-24
15	2013 KOICA Fellowship (Training) Programmes to Sri Lanka Capacity Building Courses for Surveying & Mapping Agencies	Mr. N.J.Wijenayake	Snr. S.S.	Korea	2013-10-20	013-11-09
16	Twentieth session of the Asia-Pacific Regional Space Agency Forum (APRSAF-20)	Mr. K.K.S. Rathnayake	Snr. S.S.	Vietnam	2013-12-03	2013-12-06
17	Twentieth session of the Asia-Pacific Regional Space Agency Forum (APRSAF-20)	Mr. D.G. Darmapriya	Snr. S.S.	USA	2013-12-03	2013-12-06

	<i>Name of Scholarship</i>	<i>Name</i>	<i>Designation</i>	<i>Country</i>	<i>Period</i>	
18	1 <sup>st</sup> Joint Project Team Meeting for Sentinel Asia Step 3(JPTM 2013) DPN/DAN Organizer Meeting	Mr. S.K. Wijayasinghe	Snr. D.S.G.	Thailand	2013-11-26	2013-11-29
19	Phase – ii Workshop of the Sentinel Asia Mini Project at AIT	Mrs. D.W.H.M.L.S.Hettiarachchi	Snr. Map Technological Officer	Thailand	2013-12-02	2013-12-20

### Local Training (Short Terms)

	<i>Course</i>	<i>Institute</i>	<i>Designation</i>	<i>No. of officers participated</i>
1	Training Programme on Transport Management	SDFL	Public Management Asst	01
2	Training Programme on Advance Computer	Public Service Training Institute	Public Management Asst	02
3	Training Programme on maintaining personal files	Public Service Training Institute	Public Management Asst	01
4	Disciplinary Procedure	SDFL	Public Management Asst/Legal Officers	04
5	Advanced 'B' Accounts Training	Public Service Training Institute	Public Management Asst	01
6	Disciplinary Procedure	SLIDA	Public Management Asst	01
7	Awareness Programme on Sri Lanka Public Sector Accounting Stands	Association of public Finance Accounts of Sri Lanka	Public Management Asst	05
8	Public Finance Management	Public Service Training Institute	Public Management Asst	02
9	Tax Exemptions and concessions by the revenue amendments of 2011 & 2012 and proposed by Budget 2013	SDFL	Snr.D.S.G./D.S.G./Accountants	18
10	Training Programme on induction training programme of Public Management Assistant Service	Public Service Training Institute	Public Management Asst	11
11	Office management	Public Service Training Institute	Public Management Asst	03
12	Training Programme on salary conversions	Public Service Training Institute	Public Management Asst	03
13	Awareness programme on how to minimize audit queries and improve public accountability	Association of public finance accountants of Sri Lanka	Technical & Administrative Officers	10
14	Training Programme on Bid Evaluation	SLIDA	Public Management Asst	01
15	Awareness programme on Sri Lanka public sector accounting stands	Chartered Institute of Public Finance & Accountancy	Accountants	01
16	Geo - Spatial empowering nations growth	Geo Spatial Media & Communications Pvt. Ltd.	Snr.S.S./Accountants/ Govt. Surveyor /M.P.O./T.A.O.	18
17	Training programme on Archives Record Management and Preservation of Records	Department of National Archives	Snr. D.S.G./D.S.G./Snr.S.S	04
18	Public seminar on recent amendments to tax laws	Department of Inland Revenue	Accounts	01
19	Training Programme on Document Management	Department of National Archives	Public Management Asst	03
20	Government procurement procedure	SLIDA	Public Management Asst	05
21	The training programme on the role of Office Assistants	SLIDA	Office Assistant	01
22	Training Programme for the Officers in SLTS	Public Service Training Institute	SLTS Officers	46

	<i>Course</i>	<i>Institute</i>	<i>Designation</i>	<i>No. of officers participated</i>
23	Training Programme for the Officers in SLTS	Public Service Training Institute	SLTS Officers	26
24	Training Programme for the Officers in SLTS	SLIDA	SLTS Officers	20
25	Proper Organization and Systematic Purchasing	Institute for construction training & Development	Accountants	02
26	Effective management skills for administration officers of the public sector	SDFL	Snr.S.S	05
27	Training Programme on induction training programme for the officers in SLTS	SLIDA	Newly recruited officers to SLTS	85

### Local Training (Long Terms)

	<b>Course Title</b>	<b>Name</b>	<b>Designation</b>	<b>Institute</b>	<b>Duration</b>
1	Master of Public Administration	Mrs.K.K.B.N. Fernando	Snr.S.S.	University of Colombo	2 Years
2	Master of Science in Geoinformatics	Mr.I. Welikanna	Govt. Surveyor	University of Colombo	2 years
3	Digital Pre Press	Mr. R.A. Titas Mr.B.Wejesinghe	Litho Printer	Sri Lanka Institute of Printing	26 weeks
4	Sheet fed Litho Operation	Mr.V.A.Gayan	Litho Printer	Sri Lanka Institute of Printing	26 weeks
5	Tamil Language Course	All Categories in the Department		Official Language Department	216 hours

## Annexure 04

Expenditure Estimates								
	Previous Year (2012)			Percent age of Expend iture	Current Year (2013)			Percenta ge of Expendit ure
	Allocation	Expenditure	Balance		Allocation	Expenditure	Balance	
<b>Program 1 Project 1</b>								
<b>Personal Emolument</b>	87,010,000	86,096,296	913,704	99%	96,500,000	89,700,609	6,799,391	93%
<b>Other Recurrent</b>	59,805,000	58,169,165	1,635,835	97%	63,600,000	61,815,557	1,784,443	97%
<b>Capital-</b>								
<b>2001</b>	6,000,000	4,850,736	1,149,264	81%	21,000,000	14,866,056	6,133,944	71%
<b>2002</b>	2,400,000	2,012,481	387,519	84%	2,500,000	1,474,180	1,025,820	59%
<b>2003</b>	2,000,000	1,554,898	445,102	78%	2,400,000	1,579,482	820,518	66%
<b>2102</b>	750,000	695,858	54,142	93%	800,000	765,824	34,176	96%
<b>2103</b>	2,300,000	1,757,542	542,458	76%	2,400,000	1,871,728	528,272	78%
<b>2104</b>	60,000,000	34,238,476	25,761,524	57%	30,000,000	29,572,355	427,645	99%
<b>2401</b>	300,000	274,550	25,450	92%	300,000	285,689	14,311	95%
<b>Program 2 Project 2</b>								
<b>Personal Emolument</b>	1,453,422,000	1,453,111,291	310,709	100%	1,567,500,000	1,522,278,603	45,221,397	97%
<b>Other Recurrent</b>	127,960,000	125,553,234	2,406,766	98%	144,120,000	133,645,525	10,474,475	93%
<b>Capital -</b>								
<b>2001</b>	10,500,000	9,455,277	1,044,723	90%	11,000,000	9,611,521	1,388,479	87%
<b>2002</b>	13,000,000	9,942,937	3,057,063	76%	13,000,000	10,696,189	2,303,811	82%
<b>2003</b>	13,000,000	11,016,789	1,983,211	85%	13,500,000	12,818,492	681,508	95%
<b>2102</b>	1,300,000	1,052,122	247,878	81%	1,500,000	1,463,427	36,573	98%
<b>2103</b>	23,000,000	12,931,960	10,068,040	56%	25,000,000	18,450,047	6,549,953	74%
<b>2401</b>	250,000	198,750	51,250	80%	300,000	300,000	-	100%
<b>2502</b>	15,000,000	5,988,350	9,011,650	40%	10,000,000	6,441,884	3,558,116	64%
<b>Program 2 Project 3</b>								
<b>Personal Emolument</b>	64,490,000	64,379,269	110,731	100%	67,600,000	63,974,261	3,625,739	95%
<b>Other Recurrent</b>	5,420,000	5,305,254	114,746	98%	6,490,000	6,287,053	202,947	97%
<b>Capital -</b>								
<b>2001</b>	1,300,000	1,180,683	119,318	91%	1,300,000	1,299,664	337	100%
<b>2002</b>	500,000	455,000	45,000	91%	500,000	478,358	21,642	96%
<b>2003</b>	1,100,000	1,000,000	100,000	91%	1,200,000	1,200,000	-	100%
<b>2102</b>	150,000	144,842	5,158	97%	200,000	197,715	2,285	99%
<b>2103</b>	150,000	16,800	133,200	11%	200,000	199,542	458	100%
<b>2401</b>	160,000	139,000	21,000	87%	200,000	199,619	381	100%
<b>Total</b>	<b>1,951,267,000</b>	<b>1,891,521,561</b>	<b>59,745,439</b>	<b>97%</b>	<b>2,083,110,000</b>	<b>1,991,473,378</b>	<b>91,636,622</b>	<b>96%</b>

Annexure 05**Government officers' Advance 'B' Account**

Limits	Previous Year - 2012		Current Year - 2013	
	Estimate	Actual	Estimate	Actual
Maximum Limit of Expenditure	150,000,000	64,482,909	155,000,000	96,459,955
Minimum Credit Limit	100,000,000	121,282,018	100,000,000	107,982,493
Maximum Debit Limit	432,000,000	305,597,630	492,000,000	294,075,092

	Year 2012	Year 2013
Cash Debit	48,828,290	81,011,403
Other Departments Debit	15,654,620	15,448,552
Cash Credit	108,589,405	98,787,516
Other Departments Credit	12,692,613	9,194,977

Annexure 06**Revenue Account**

	Previous Year - 2012	Current Year - 2013
Estimate	90,000,000	112,000,000
Revenue of the year	131,620,213	132,827,068
Difference (+/-)	41,620,213	20,827,068

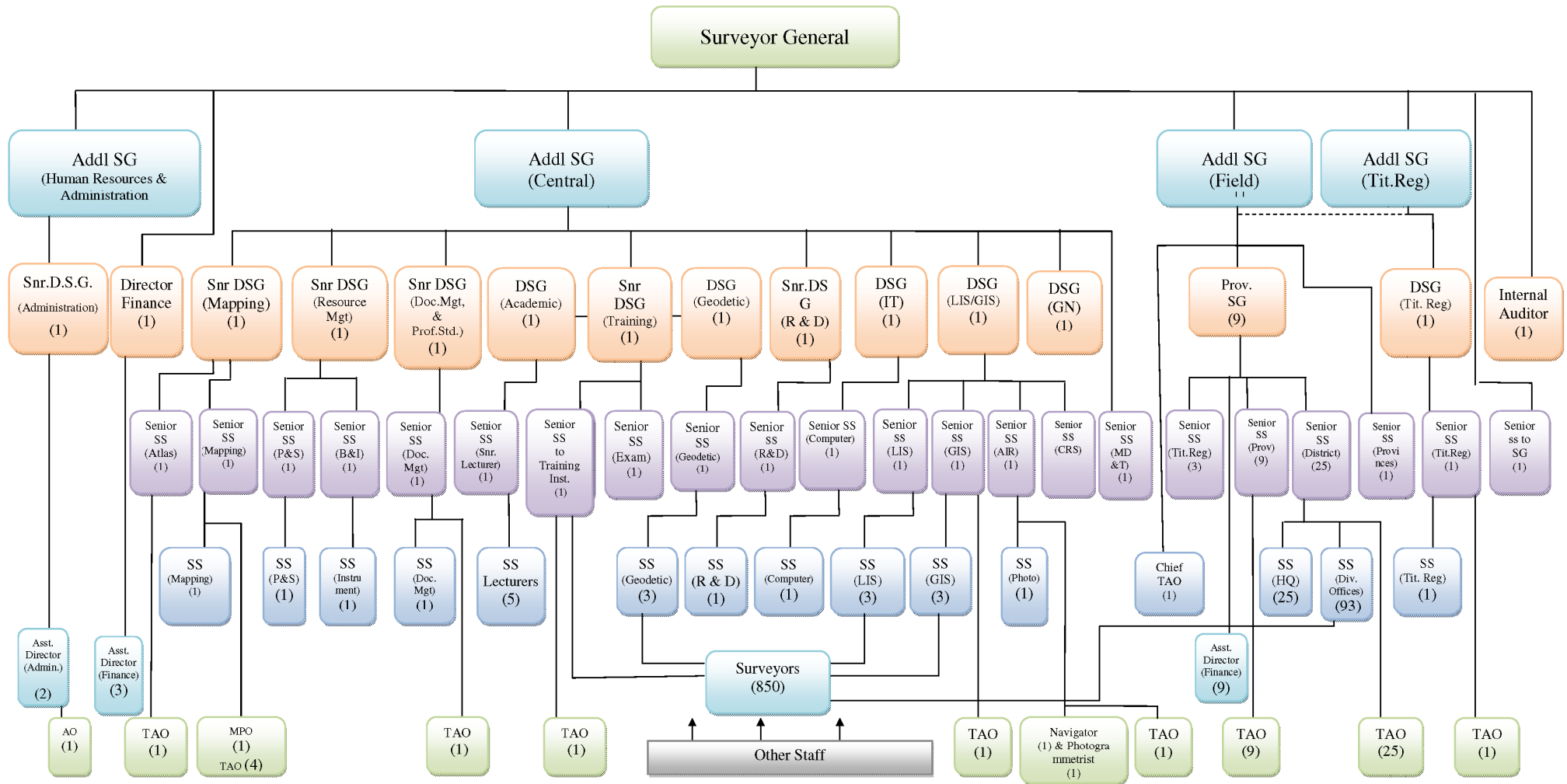
Annexure 07**Immovable Assets**

Serial No.	Type of Assets	Position at the beginning of the year	Changes taken place during the year				Position at the end of the year
			Acquisitions	Purchasing	Auctions	Removals	
1.	Land (Hectares)	73.4181	-	-	-	-	73.4181
2.	Buildings	182	-	-	-	-	182
3.	Constructions	07	02	-	-	-	09

Annexure 07 Contd.**Movable Assets**

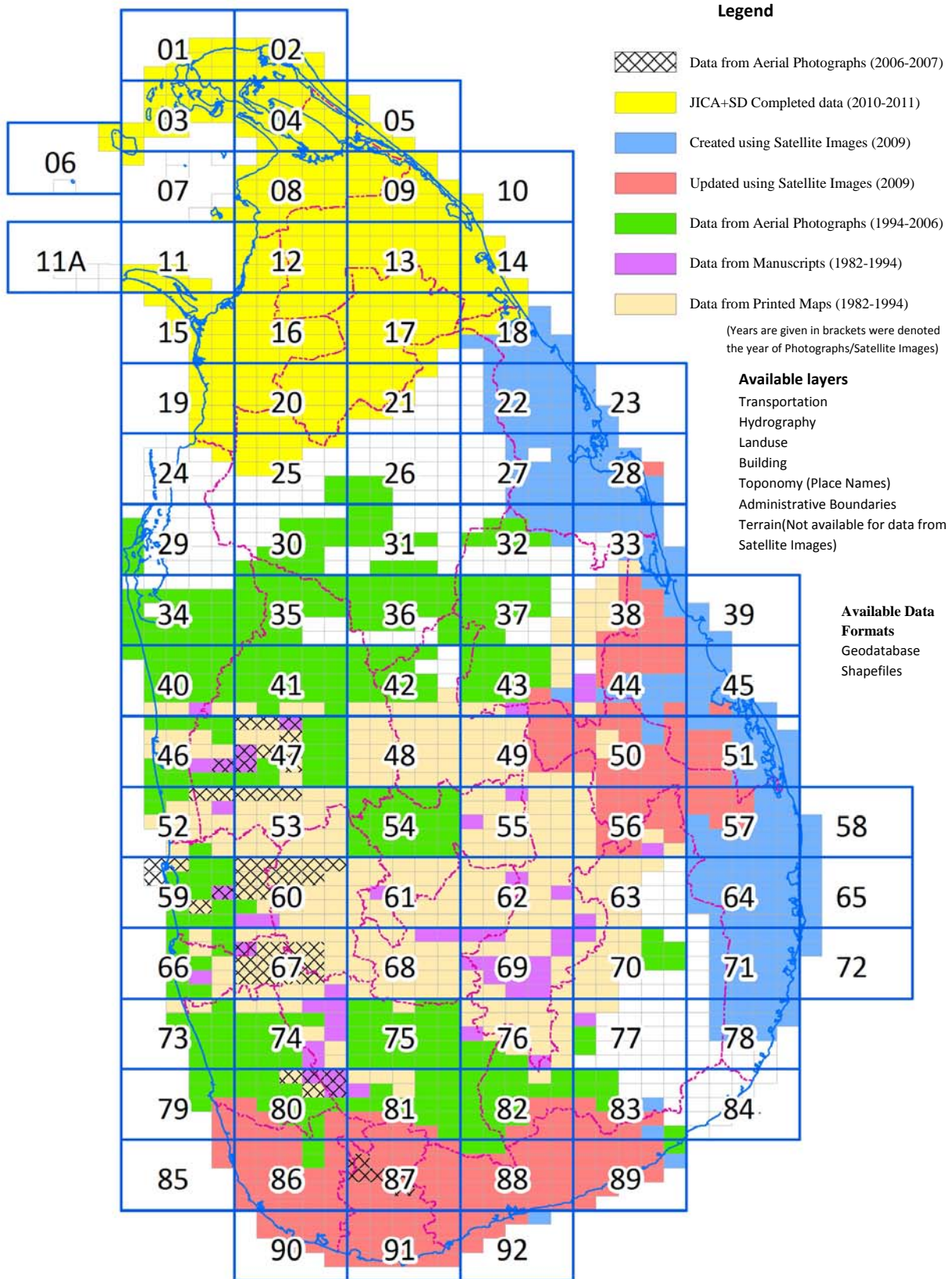
Serial No.	Type of Assets	Position at the beginning of the year	Changes taken place during the year				Position at the end of the year
			Acquisition	Buying	Sales	Disposal	
1.	Motor Lorry	07	-	-	-	-	07
2.	Motor Lorry (Single Cab)	40	-	-	-	-	40
3.	Motor Cars	05	-	-	-	-	05
4.	Jeeps	62	-	-	-	-	62
5.	Double Cab	149	-	-	-	-	149
6.	Vans	29	-	-	-	-	29
7.	Three Wheelers	01	-	-	-	-	01
8.	Tractors	05	-	-	-	-	05
9.	Bowsers	01	-	-	-	-	01
10.	Push Bicycles	41	-	-	-	-	41
11.	Duplicating Machines	28	-	-	-	-	28
12.	Photo Copiers	139	-	20	16	-	143
13.	Computers	792	-	97	-	-	889
14.	Computers Printers	497	-	51	75	-	473
15.	Laptop Computers	102	-	11	4	-	109
16.	Fax Machines	118	-	18	12	-	124
17.	Type Writers (Manual)	150	-	-	26	-	124
18.	Safes	25	-	-	-	-	25
19.	Camera (Process & Aerial)	02	-	-	1	-	1
20.	Litho Printing Machines	05	-	-	-	-	05
21.	Television Sets	07	-	2	-	-	9
22.	Refrigerators	12	-	-	-	-	12
23.	Guillotines	03	-	-	-	-	03
24.	Photogrammetric Plotters	10	-	-	-	-	10
25.	Total Stations Survey Instruments	375	-	25	-	-	400
26.	Theodolites Survey Instruments	1004	-	-	-	-	1004
27.	Programmable Calculators	592	-	-	-	-	592
28.	Large Scanners	03	-	1	-	-	4
29.	Photogrammetric Plotters (Digital)	02	-	-	-	-	2
30.	Steel Tapes	689	-	170	1	-	858
31.	Computer Server	-	-	1	-	-	1
32.	Multi Media System	-	-	1	-	-	1
33.	Multi Media Projector	-	-	10	-	-	10

ADMINISTRATIVE STRUCTURE ( 2013 ) - SURVEY DEPARTMENT



Addl SG	- Additional Surveyor General	Exam	- Examination	Resource Mgt.	- Resource Management
Admin	- Administration	Inst	- Institute	Senior SS	- Senior Superintendent of Surveys
AIR/CRS	- Air Survey/Centre for Remote Sensing	IT	- Information Technology	Snr. DSG	- Senior Deputy Surveyor General
B & I	- Building & Instrument	LIS/GIS	- Land Information system/Geographic Information System	SS	- Superintendent of Surveys
Chief TAO	- Chief Technical & Administrative Officer	MD & T	- Management Development & Training	SS (HQ)	- Superintendent of Surveys (Head Quarters)
Doc.Mgt. & Prof.Std.	- Document Management & Professional standard	P & S	- Procurement & Supplies	TAO	- Technical & Administrative Officer
GN	- Geographical Names	AO	- Administrative Officer	Tit Reg	- Title Registration
DSG	- Deputy Surveyor General	R & D	- Research and Development	MPO	- Map Production Officer

# 1:10,000 Digital Topographic Database



# Bimsaviya Programme 2013

(Divisional Secretariatwise status of Cadastral Surveys )

1. Delft
2. Nallur
3. Kandavalai
4. Karachchi
5. Maritime Pattu
6. Tunukkai
7. Musali
8. Vavuniya North
9. Vavuniya South
10. Nuwaragampalatha Central
11. Rajanganaya
12. Thalawa
13. Tambuttegama
14. Nuwaragampalata East
15. Medirigiriya
16. Lankapura
17. Hingurakgoda
18. Welikanda
19. Trincomalee Town & Four Gravet
20. Kinniya
21. Kantale
22. Eachchilampattu (Verugal)
23. Eravur Pattu (Chenkalady)
24. Manmunai North (Batticaloa Town)
25. Koralai Pattu South & Central
26. Sammanthurai
27. Ampara (Namal Oya)
28. Potuvil
29. Galewela
30. Dambulla
31. Pallepola
32. Harispattuwa
33. Kandy Four Gravets
34. Udunuwara
35. Yatinuwara
36. Udapalatha
37. Doluwa
38. Kotmale
39. Nuwara Eliya
40. Vanathavillu
41. Kalpitiya
42. Mundal
43. Wennappuwa
44. Kuliypitiya West
45. Kurunegala
46. Rideegama
47. Pannala
48. Mallawapitiya
49. Negambo
50. Katana
51. Divulapitiya
52. Mirigama
53. Attanagalla
54. Minuwangoda
55. Wattala
56. Ja-Ela
57. Gampaha
58. Mahara/Kadawata
59. Dompe ( Weke )
60. Biyagama
61. Kelaniya
62. Colombo
63. Homagama
64. Hanwella
65. Maharagama
66. Sri Jyawardanapura Kotte
67. Moratuwa
68. Kesbewa
69. Ratmalana
70. Timbirigasyaya
71. Padukka
72. Dehiwala - Mount Lavinia
73. Panadura
74. Horana
75. Kalutara
76. Matugama
77. Galigamuwa
78. Warakapola
79. Eheliyagoda
80. Kuruwita
81. Ratnapura
82. Balangoda
83. Weligepola
84. Kiriella
85. Mahiyanganaya
86. Ridimaliyadda
87. Monaragala
88. Siyambalanduwa
89. Hikkaduwa
90. Galle Four Gravets
91. Weligama
92. Matara Four Gravets
93. Hambantota
94. Sooriyawewa
95. Lunugamwehera
96. Tissamaharama
97. Beliatta

