

## ***A Message from District Secretary, Puttalam.***

*The Puttalam district, one of the two districts in North Western province is a homeland of prolonged history. The history of Puttalam dates back to the arrival of Prince Vijaya, nearly 2500 years ago, when his vessel washed ashore to "Thambapani" which is located North side of Puttalam lagoon. So this was the place of origin of Sinhalese lineage.*

*Puttalam District, which covers a land area of 3072 sq. k.m. remained in the past as neglected district lacking many facilities are now being transformed into a well developing district due to the rapid development process of the present government.*

*Sinhalese, Tamils and Muslims are living together peacefully in the district. I am very proud that the Munneswaram Temple, the sacred place for both Hindus and Buddhists and the St. Ant. Thalawila church, the sacred place of Catholics are situated in the district of Puttalam.*

*The well built irrigation system such as Neelabemma, Radavi Bendha elas and Inginimittiya reservoir enrich the agricultural activity of the district so that the agriculture becomes a dominant source of income of the people. Fishing industry is another lucrative business due to a lengthy coastal line which is covering the district from Wennappuwa to Kalpity peninsula. Since Puttalam is the home to one of Sri Lanka's largest lagoons, also called Puttalam lagoon the district becomes the second largest salt producer of the country*

*The district Puttalam which is known by very remote area and consisting a large number of farming community itself turns into a well developing district at present. It is proud to say that a large no of working mass from farming and fishing community are now engaging in government sector jobs in consequence of the educational development. The Norachhole Coal Power Plant and the wind Power projects which are in operation at Puttalam and Kalpity area help to meet the electricity demand of the country and add more mega watts to the national grid. Kalpity which is a one of tourism zones of the country also situates in the district and tourism industry in the area comes under rapid development. All the highways of the district are well constructed so that the district's infrastructures are almost glowing. In addition to the contribution of agriculture and fishing industries to the national development, the Power & Energy and Tourism industries which have been undertaken recently in the district also play significant role for the national development.*

*The administrations of the district are carried out through the District Secretariat and 16 Divisional Secretariats. They are playing a major role in development programmes implemented by the government in order to alleviate the poverty of the people and upgrade the living standard.*

*The development activities carried out by 16 Divisional Secretariats under the supervision of the District Secretariat in the sections of General Administration, Social Services and Religious & Culture for the year 2012 and the Progress Reviews of Expenditure incurred over them is produced as a Performance Report.*

*M. Kingsley Fernando  
District Secretary,  
Puttalam*

## **Introduction**

The Puttalam which is the homeland of chronicle of Sri Lanka is a sacred land of prolonged histories. The district is a coastal land situated at 300 feet lower from sea level. The administrative district Puttalam locates in the North Western province of Sri Lanka and surrounded on the North by Kala Oya, bordering Mannar district, East by Kurunegala and Anurdhapura districts, South by ‘Ma Oya’ bordering Gampaha district and West by Indian Ocean. The length and width of the district is 120 km and 50 km respectively. In addition to the 03 main categories of ethnic groups Sinhalese, Tamils and Muslims; Male, Burghers, Malaya, Chetty, and Kafirs from South Indian descendants are also living in the district. The Buddhists community forms the majority of the population in the district Most of Sinhala Catholics live in Coastal lines of the district.

The district has a land area of 3013 square Kilo meters including inland water bodies and a coastal belt of 288 Kilo meters in length. Deduru Oya, Mee Oya, Battulu Oya and Rathambala Oya, which flow through the district, have contributed immensely for the prosperity of the district in various means..

There are three identifiable climate zones in the district. These are wet zone within Ma Oya and Deduru Oya, an area of Deduru Oya to northern boarder of the district indicate dry and semi arid nature and an area with sand and sand dunes with significance of aridity in Kalpitiya Peninsular.

## **Historical Background:**

The Puttalam which claims for prolonged history was known by Mangala Thotupola in ancient time. The history of Puttalam dates back to the arrival of Prince Vijaya, nearly 2500 years ago, when his vessel washed ashore to "Thambapani" which is located North side of Puttalam lagoon. So this was the place of origin of Sinhalese lineage. Further it was also the dwelling place of “Queni” who helped the Vijaya to become a Prince. Later, Queni shifted her dwelling to “Thonigala” in Anamaduwa division as the Prince Vijaya had married the princess "Bhadrakachchana” from India. It is here the longest stone inscription of Sri Lanka also found out.

It was at Dharmapala where the 04 children of Queni had sheltered before they went to the relatives following the prince Vijaya chased away them out so that this was referred in the legends as Dharmapala.. The name "Puttalam" may be a modification of the Tamil word Uppuththalam. Of

which Uppu means salt and Thalam means salt production zone, thus evolved into the name Puttalam

The Dutch Fort which is used by the Sri Lankan Naval forces even at present and the Palavi Air Port, used during the World War II have been identified as the places of direct linkage with Sri Lankan history. The Paru Elas constructed during the Dutch period to ferry the trading goods from Colombo to Puttalam and vice versa in those days are also situated within the district. The coral reef which is also one of the factors that Sri Lanka to become famous, situated in coastal line of the district.

The Pallama division once ruled by Nanthamithra , the chief disciple of Prince Dutegemunu is also one of the DS divisions in the district. It was at ancient Rajamaha Viharaa ,Paramakanda in Anamaduwa division the popular paintings of 05 interlocking Swans placed. The Munneswaram Temple, situates in Chilaw D.S. Division is the sacred place for both Hindus and Buddhists. There was a saying that it was the temple called by the name “Munisoama” during the rule of Dambadeniya Kingdom.

The Iyenak Devalaya situates in Deduru Oya area and Thanivel Devalaya in Madampe are the places of historically significant. The St. Ant. Thalawila church, the sacred place of Catholics is also situated in Kalpity D.S division in the district of Puttalam.

The world famous Artiste of wall paintings at the Keleniya Temple Hon. Solias Mendis, and Artistes Hon. Edmon Radaguru, Saiman Nawagaththegama, Vimalarathne Kumaragama who contributed for the growth of Sinhala literature greatly are the sons of this land.

It is sure that the transport facilities of the district are leading the way because of the Colombo – Anuradhapura road which goes parallel to the coastal belt of the district as it comes under the rapid development process.

### **Economic Backgrounds**

The coconut triangle belongs to the Puttalam district contributes immensely to the economy of Sri Lanka through the earnings gain from exporting of coconut and the related products. The agriculture which is the most dominant source of livelihood in the area has been carried out successfully due to the existing irrigation system since the ancient time. The paddy cultivation also becomes successful as a result of availability of water resources such as Inginimittiya tank

constructed across Mee oya, Thabbowa tank and kottukachchi colonization. The district which has 150 km lengthy coastal line engages in fishing industry in a large scale. As well the inland fishing also contributes a much to the countries economy. The prawn farming under taken adjacent to the Puttalam lagoon brings a large sum of foreign exchanges to the nation The dry fish productions are another lucrative venture taken place in Kaplity and Vanathawillu area which are surrounded by no. of small islands. The salt industry is carried out successfully adjoining to the Puttalam lagoon which is an ideal place with low rainfall and high evaporation and makes the spot to become the second largest salt producer in the country.

The vegetable cultivation carried out by using ground water is flourishing in and around Kalpity division. . The cultivation of vegetables such as Beet root, Carrot, Cabbage, Kilo Pera, Water Melon, Garkin, Pumpkin, Tomatoes, Papaws and Dragon fruit contribute to the agriculture sector largely. It can prevalently be seen the cashew cultivation in Aarachchikkattuwa, Vanathawilluwa divisions and papaw, Orange cultivation in Puttalam, Kalladi, Ralmaduwa and Vanathawilluwa .

The cement factory in Puttalam was commissioned due to the abundant deposit of lime stone at Aruwakkadu in Vanathavilluwa division. Further availability of the raw material for roof tiles and related industry in Wenappuwa and Dankotuwa areas lead the district to contribute hugely for construction industry too for the country.

Since the influx of large no. of visitors from home and abroad to the Wilpaththu National park, the Aanawilunthawa bird sanctuary and the beautiful beach valley of in and around Kalpity peninsula ; tourist hotels such as Dolphin Club, Ranveli, Pambay hotels have been constructed to facilitate and promote the tourism in the area so that the thriving of the industry brings large sum of foreign exchanges to the nation.

### **District Administrative Structure:**

The district is administered through sixteen Divisional Secretariat Divisions. They are:

01. Wenanppuwa
02. Natandiya
03. Dankotuwa
04. Chilaw
05. Kalpitya

06. Puttalam
07. Vanathawilluwa
08. Karuwalagaswewa
09. Nawagaththegama
10. Anamaduwa
11. Mahakumbukkadawal
12. Madampe
13. Mahawewa
14. Pallama
15. Mundel
16. Arachchikattuwa

There are 548 Grama Niladhari divisions in the district and 1273 villages are within them. The district is divided in to 05 electorates. They are Puttalam, Anamaduwa, Nattandiya, Wennappuwa, and Chilaw. No. of Voters for the year 2012 is 527408. Of which male voters are 254302 and female voters are 272106. No. of Members from Parliament and Provincial council represent for the district are shown below.

Member of parliaments	08
Provincial council members	17

The Puttalam Urban council and the Chilaw Urban Council are the two urban councils functioning in the district. Total Local bodies of the district are 24. Out of these 10 are Pradeesiya sabhas and 14 are sub Pradeesiya sabhas. The list of members of the U.C and V.C. are mentioned below:

<b>Local Bodies;</b>	<b>No. of Members</b>
Puttalam U.C	09
Chilaw U.C	11
Puttalam V.C.	09
Kalpity V.C.	14
Wennappuwa V.C.	22

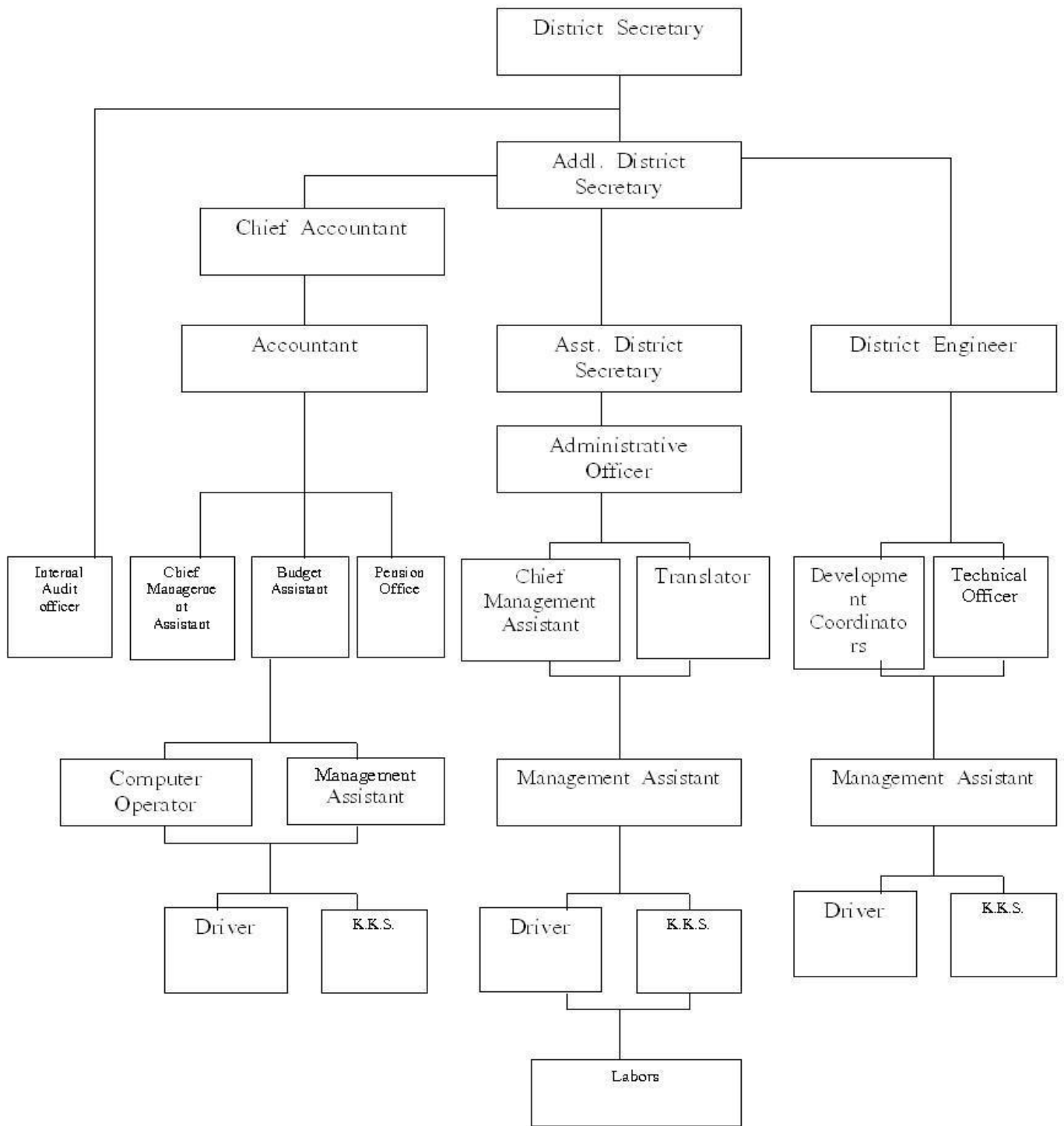
Natandiya V.C.	22
Vanathawilluwa V.C.	10
Karuwalagaswewa V.C.	10
Nawagaththegama V.C.	09
Anamaduwa V.C.	16
Arachchikattuwa V.C.	12
Chilaw V.C.	17

The Puttalam Circuit bungalow, the Chilaw holiday restaurant and 74 govt. quarters which are belonging to the Secretariat are facilitating the lodging needs of public servants in the district..

Peace and security of the district are maintained by 16 police divisions. The district is divided in to 02 educational zones. 348 schools are functioning under them. Total no. of teachers serving in the district is 7643 and student's population is 159155, the teacher student ratio is 20.8 percentages. The literacy rate of the district is 91.9 percentage. Total population of the district is estimated at 759720 of which 368844 are male population and remainder 390876 is females. Of Sri Lanka's total population, the district rate is 3.7 percent and growth rate is approximately 7 percent. Around 72 percent of the population is Sinhalese, 6 percent are Tamils, 19 percent Muslims, 0.2 percent are burgher and remainder 0.3 percent consists of others. The mortality rate of infant and mother are very low

### Approved Cadre of the Secretariat

<b>Category</b>	<b>Approved Cadres</b>	<b>Actual Cadres</b>	<b>Vacancy/Excess</b>
Senior level	-		
Tertiary level	54	37	17
Secondary level	1020	753	267
Primary level	168	168	-
Others(Casual/Temporary/Contract basis)	-	5	5
<b>Total</b>	<b>1242</b>	<b>963</b>	<b>289</b>



## **District Secretariat, Puttalam**

The District Secretariat is situated at the heart of Puttalam city. In respect of power decentralization large part of administrations are carried out through the District Secretariat. The branches of various departments are also housed at the District Secretariat complex. They are District Samurdhi Office, Asst. Commissioner Office for Election, District Registrar, Media Unit, Disaster Management unit, Audit-Sub office, District Planning office, branch of Bank of Ceylon, District Statistics office,. Provincial Land Commissioner office, Coordination office of Chief Minister of North Western Province, District Land Use office, Motor traffic branch and branch of Social Security Board and sub post office..

Coordination of the functions pertaining to civil administration and supervision of Divisional Secretaries in the district are performed by the Puttalam District Secretariat. Accordingly following are the main functions of the District Secretariat.

General Administration and supervision of the Divisional Secretariats.

Coordinating the activities of agriculture and fisheries sector

Buddhist and Cultural affairs.

Performance Appraisal of Staff Grade Officers

Coordination of Social Services activities

Coordination of Ranaviru Welfare activities

Election related activities..

Appointment, of Registrar of Birth, Death and Marriage and sudden Death Inquirer.

Human and physical resource management

Environment conservation and development including land use planning

Protection and maintenance of public assets such as quarters and state owned lands.

Socio-economic development activities including construction.

Disaster Management.

Weight and Measurement activities.

Gun Licensing and Issuing of Explosive Permits.

Subsequent of the formation of District Secretariat as an “A” grade department in 1996 performs financial management activities initially under the expenditure head 625 from 2000 to 2006 under the ‘837’ and from 2007 under the head of 273. Financial Management activities are arranged under two units as mentioned below.

- I Accounting unit responsible for allocation of fund.
- II Control Unit

All receipts and payment of the District Secretariat and the payments of planning Division, Samurdhi Office Division, Small Enterprise Development unit other organization where the finance have being channeled though the District Secretariat are made by accounting Unit. Financial management and control and monitoring of the District Secretariat are perfumed by the Control Accounts Unit. The activities relevant in this regard are as follows:

- I. Preparation of annual estimate of revenue, expenditure and advances.
- II. Allocation and Distribution of funds to Divisional Secretariats.
- III. Obtaining annual imprest statement from Divisional Secretariats to submit to the Dept.of Public Finance.
- IV. Reconciliation of computerized Accounts reports with the Treasury reports and dispatch them to the relevant line ministries and Departments.
- V. Preparation of Appropriation Accounts, Advance Accounts and Control Accounts.
- VI. Collection of Revenue receiving for gun license and explosive permit.

The operational activities of the Secretariat for the year 2012 are divided in to followings.

- General Administration
- Cultural and Social Affairs
- Development Activities
- Annual Account Summary

## General Administration

The appropriation bill allocated to District Secretariat for the year 2012 and Summary report on expenditure incurred accordingly, is given below.

### 1. Recurrent Expenditure :

	Allocation	Expenditure	Balance
<b>* District Secretariat</b>			
I. Gen. Admn.	85,103,679.00	83,539,240.00	1,564,439.00
II. Capital Expenditure	101,800,000.00	62,402,006.00	39,397,994.00
<b>* Divisional Secretariat</b>			
I. Gen. Admn.	358,631,047.00	355,631,820.00	2,999,227.00
II. Capital Expenditure	400,000.00	354,276.00	45,724.00

### 2. Pension Payments

1. From January to December 2012 - Civil	- Rs.281,508,278.17
- Widow	- Rs.51,596,137.87
- Local Authorities	- Rs. 1,089,050.62

### 3. Added Income

I. Fee charged for issue of Gun License & Some other type of license	Rs. 315,548.00
II. Wages for the State Building	Rs. 1,364,720.00
III. Fine & forfeiture	Rs. 5,771,947.00
IV. Interest on Govt. Servants loan	Rs.11, 921,892.00
V. Administration cost	Rs. 2,073,721.00
VI. Miscellaneous Income	Rs.10, 052,323.00

### 4 . Internal Audit

The Internal Audit is established with a view to form an efficient management of Public Finance. This Unit is directly responsible to the head of the Institution on financial and accounting activities, performing of related works and services and controlling of them

Study the Internal Control system adopt by the Dept. on financial activities and conduct independent appraisal and constant examination to check whether the Internal control system used to detect and avoid faults and frauds happening in the institution are satisfactory. As such

supporting service also provides to the Accounting officer on implementation of Development Project Proposals and also to determine the progress of them. Accordingly following error and faults are detected for the year 2012.

- ✓ Instruction has been given to rectify the shortages of existing Internal control system in Divisional Secretariats.
- ✓ Instruction has been given to correct the shortcomings detected in Vouchers.
- ✓ Indicate the fees not to be recovered on license and take steps to recover them.
- ✓ Indicate the shortcoming on maintain of personal files and other institutional works.
- ✓ Indicate the error and faults made on running chart and fuel usage and instruct to correct such faults.

## **5. Human Resource Development**

Following programmes were implemented under the human resource development by the Secretariat through HR officers.

<b>Programme</b>	<b>No of participants</b>	<b>expenditure</b>
1. Enterprise Development Programme	33	14610
2. Required training Programme.	115	27250
3. Employment in Pvt. Sector	60	12000
4. Free Enterprise Induction Programme	33	11460
5. Self Employment Induction programme	288	12690
6. External Graduates programme	35	16812
7. Job society programme	90	62100
8. Overcoming of occupational challenges	96	14630

## **06. News and media**

The programmes implemented by the Media Unit for the year 2012 are given below:

- ❖ Minute writing on Puttalam District Coordinating Committee holds under the leadership of his Excellency the president.
- ❖ Workshop was conducted for divisional journalist by the News paper Union
- ❖ Work shop was conducted by the Foreign Bureau
- ❖ Workshop on Social Purgation
- ❖ Media Seminar for School Children via Fortnight Magazine.
- ❖ Coordination activity of the Media for All Island Dahampasal Competition
- ❖ Receiving information on District Development Activities and printing books.
- ❖ Seminars of Political and present role of the Media/ Tourism Industry of Sri Lanka

- ❖ Seminars and entertainment programme on Crime and National Security. Around 50 news paper reports were given to the Media for the year 2012
- ❖ Preparation of Inquiry letters
- ❖ Coordination of Media's activity of all Elections
- ❖ Co-ordinating the Divisional journalist in order to obtain the pronouncement on all development activities of District.
- ❖ Establishment of Media forum in District Schools.
- ❖ Arrangement of Media facility on programmes conducted by various Ministries.

## **07. Land Registry**

Total no. of Deed registration taken place in the year 2012 are 13448 and Swarna Boomi deed registrations are 200.

## **08. Disaster Management Unit**

The community based Awareness programme and Emergency Response Programme implemented for the year 2012 are as follows:

### **Tsunami Rehearsal Programme:**

Mundalama Pallivasal Paduwa	2012.02.26
Weralawella, Chilaw	2012.06.22
Narakkaliya	2012.07.20
Wattakkalliya, chilaw	2012.07.26
Medhathoduwa, Mahawewa	2012.08.10
Poonapittiya, Mundal	2012.08.17
Mandal Kuda, Kalpity	2012.09.17
Wadipe, kalpitiya	2012.09.14
Battalankundu, Kalpitiya	2012.10.19

### **Awareness Programme:**

- Awareness programme conducted on Dam Safety of Inginimittiya Reservoir for 10 G.N. divisions of Nawagaththegama Division
- Awareness programme conducted on elephant attack on human and crops for 05 G.N. divisions of Nawagaththegama and karuwalagaswewa division



## Social and Culture Services

### 01. Child Protection

Awareness programme for following persons were conducted to mitigate the child abuse incidents.

- Social leaders.
- Goragahayaya Viharastha Dayaka Sabhawa
- Members of Rural monitoring committee.
- Representatives of Children's Council
- Members of Children Forum
- Drivers of School van

And setting up of Children councils and conducted children camps.

### 02. Social Security Board

The progress of the Social Security Board is as follows

- Newly Registered members for the scheme – 2945
- Retired members of the scheme - 184
- Pension payments - 92000
- No.of person got the compensation - 10
- Compensation paid under the scheme - 217905/-

### 03. Social Service Activity;

- No of Rehabilitated person at Household level 198
- Reunification and Rehabilitation into society 212
- Admission to preschool 66
- No of students readmitted to school education 55
- No. of student admitted to the Special school 63
- No of persons sent for treatment 745

○ No. of person sent to Vocational training	120
○ No. of person for sent for employment	93
○ No. of person for self employment	227
○ No. of person for Relief payments	1550
○ No. of person got relief payment for Houses	187
○ Meeting conducted for Volunteers	231
○ Meeting conducted for Team of Volunteers	530
○ No of meeting on operation committee	148
○ Rural Committee meeting	1163
○ Awareness programme for Officers	112
○ Awareness programme for partents	145

#### **04. Religious and Cultural Affairs**

- ❖ 01 week Prith chanting held at Vadaththa Sri Sarangana Privine to invoke blessing on nation, people and Arm Forces.
- ❖ 01 week Prith chanting held at Karukkuliya Jayathilakaramaya, Arachchikkattuwa to invoke blessing on nation, people and Arm Forces.

## **Development Activities**

Development activity is carried out by the Development Branch of the Secretariat under the District Engineer. The construction work of New District Secretariat building was commenced in the year 2010 and the construction work of the building are recommenced in 2012 and it is in progress. Two Divisional Secretariat buildings were also constructed in the same year.

	Estimated Amt.Rs.	Cost incurred for2012 .Rs
District Secretariat, Puttalam	300,000,000.00	36,180,486.00
Divisional Secretariat, Nattandiya	9,046,000.00	4,018,441.00
Divisional Secretariat, Arachchikkattuwa	14,418,000.00	4,466,874.00

## Annual Accounts

The Expenditure details of the District Secretariat and Divisional Secretariats under the operation programme for the year 2012 are shown under each project in D.G.S.A. 2,3,4,5. The details of the opening balances of Advance and Deposit Accounts and the credit and debits made on such accounts within the year and the details of imprest are shown in Note ii and iii respectively.

## Appropriation Account by Programme - 2012

Expenditure Head No : 273      Name of Ministry / Department / District Secretariat: District Secretariat - Puttalam  
 Programme No. & Title : 1 Operation  
 Administration

### Summary of Recurrent and Capital Expenditure

Nature of Expenditure with DGSA format Reference	(1)	(2)	(3)	(4)	(5)	(6)	Page No. (Reference to relevant DGSA format)
	Provision in Budget Estimates	Supplimentary Provision and Supplimentary Estimate Allocation	Transfers in terms of the F.R. 66 and 69	Total Net Provision (1+2+3)	Total Expenditure	Net Effect Saving/(Excess) (4-5)	
	Rs.	Rs.	Rs.	Rs.	Rs.		
(a) Recurrent (DGSA 3)	378,500,000	65,234,726	11,800,000 -11,800,000	443,734,726	439,171,060	4,563,666	<b>3</b>
(b) Capital (DGSA 4)	102,200,000	0	4,500,000 -4,500,000	102,200,000	62,756,282	39,443,718	<b>4</b>
<b>Total</b>	<b>480,700,000</b>	<b>65,234,726</b>	<b>0</b>	<b>545,934,726</b>	<b>501,927,342</b>	<b>44,007,384</b>	

## Recurrent Expenditure by Project

Expenditure Head No : 273

Name of Ministry / Department / District Secretariat: District Secretariat - Puttalam

Programme No. &amp; Title : 1 Operation Administration

Nature of Expenditure with DGSA format Reference	(1)	(2)	(3)	(4)	(5)	(6)
	Provision in Budget Estimates	Supplimentary Provision and Supplimentary Estimate Allocation	Transfers in terms of the F.R. 66 and 69	Total Net Provision (1+2+3)	Total Expenditure	Net Effect Saving/(Excess) (4-6)
	Rs.	Rs.	Rs.	Rs.	Rs.	Rs.
<b><u>Project No:01 &amp; Title:...</u></b> <b><u>Genaral Administration &amp; Estabilshment Service</u></b>						
Personal Emoluments	18,800,000	56,978,679	0	75,778,679	75,298,224	480,455
Other Charges	9,325,000	0	0	9,325,000	8,241,016	1,083,984
			0			
<b>Sub Total</b>	<b>28,125,000</b>	<b>56,978,679</b>	<b>0</b>	<b>85,103,679</b>	<b>83,539,240</b>	<b>1,564,439</b>
<b><u>Project No:02. &amp; Title:...</u></b> <b><u>Divisional Secretariats</u></b>						
Personal Emoluments	311,500,000	8,256,047	11,000,000	319,756,047	319,178,716	577,331
Other Charges	38,875,000	0	-11,000,000	38,875,000	36,453,104	2,421,896
			800,000			
			-800,000			
<b>Sub Total</b>	<b>350,375,000</b>	<b>8,256,047</b>	<b>0</b>	<b>358,631,047</b>	<b>355,631,820</b>	<b>2,999,227</b>
Project No:01	28,125,000	56,978,679	0	85,103,679	83,539,240	1,564,439
Project No:02.	350,375,000	8,256,047	0	358,631,047	355,631,820	2,999,227
<b>Grand Total</b>	<b>378,500,000</b>	<b>65,234,726</b>	<b>0</b>	<b>443,734,726</b>	<b>439,171,060</b>	<b>4,563,666</b>

**Capital Expenditure by Project**Name of Ministry / Department / District Secretariat: District Secretariat -  
Puttalam

Expenditure Head No : 273

Programme No. &amp; Title : 1 Operation Administration

Project No. &amp; Title : General Administration &amp; District Administration

Object Code No.	Item No.	Financed by (Code No.)	Description of Items	(1)	(2)	(3)	(4)	(5)
				Provision in Annual Estimates	Transfers in terms F.R. 66 and 69 and Supplementary Provision and Supplementary Estimate Allocation	Total Net Provision (1+2)	Total Expenditure	Net Effect Saving/(Excess) without frozen Provision (3-4)
				Rs.	Rs.	Rs.	Rs.	Rs.
			<b>Rehabilitation and Improvement Capital Assets</b>					
2001	11		Buildings	4,000,000	4,500,000	8,500,000	5,010,466	3,489,534
2002	11		Plant Machinery and Equipment	500,000	-	500,000	166,935	333,065
2003	11		Vehicles	1,000,000		1,000,000	958,519	41,481
			<b>Sub Total</b>	<b>5,500,000</b>	<b>4,500,000</b>	<b>10,000,000</b>	<b>6,135,920</b>	<b>3,864,080</b>
			<b>Acquisition of Capital Assets</b>					
2102	11		Furniture and Office Equipment	5,000,000	-	5,000,000	1,667,412	3,332,588
2103	11		Machinery	1,000,000	-	1,000,000	287,146	712,854
2104	11		Buildings and Structures	90,000,000	(4,500,000)	85,500,000	54,011,528	31,488,472
			<b>Sub Total</b>	<b>96,000,000</b>	<b>(4,500,000)</b>	<b>91,500,000</b>	<b>55,966,086</b>	<b>35,533,914</b>
			<b>Capacity Building</b>					
2401	11		Traming	300,000	-	300,000	300,000	-
			<b>Sub Total</b>	<b>300,000</b>	<b>-</b>	<b>300,000</b>	<b>300,000</b>	<b>0</b>
			<b>Project 01 Total</b>	<b>101,800,000</b>	<b>-</b>	<b>101,800,000</b>	<b>62,402,006</b>	<b>39,397,994</b>
			<b>Capacity Building</b>					
			Traming	400,000	-	400,000	354,276	45,724
				<b>400,000</b>	<b>-</b>	<b>400,000</b>	<b>354,276</b>	<b>45,724</b>
			<b>Project 02 Total</b>	<b>400,000</b>	<b>-</b>	<b>400,000</b>	<b>354,276</b>	<b>45,724</b>
			<b>Total</b>	<b>700,000</b>	<b>-</b>	<b>700,000</b>	<b>654,276</b>	<b>45,724</b>

## Summary of Financing Expenditure

Expenditure Head No : 273

Name of Ministry / Department / District Secretariat: District Secretariat - Puttalam

Programme No. &amp; Title : 1 General Administration

Financing Code	Source	Programme 01*		Programme 02*		Total		Percentage of Expenditure (6/5)*100
		Net Provision* 1	Actual Expenditure 2	Net Provision 3	Actual Expenditure 4	Net Provision 5	Actual Expenditure 6	
		Rs.	Rs.	Rs.	Rs.	Rs.	Rs.	
11	Domestic Funds	545,934,726	501,927,342			545,934,726	501,927,342	92
12	Foreign Aid - Loan							
13	Foreign Aid - Grant							
14	Reimbursable Foreign Aid - Loan							
15	Reimbursable Foreign Aid - Grant							
16	Counterpart Fund							
17	Foreign Aid related Domestic Funds							
21	Special law services							
	<b>Total</b>	<b>545,934,726</b>	<b>501,927,342</b>	<b>0</b>	<b>0</b>	<b>545,934,726</b>	<b>501,927,342</b>	<b>92</b>

**Summary of Control Accounts for Advance & Deposit Accounts - 2012**Name of Ministry / Department / District Secretariat: District Secretariat -  
Puttalam

Expenditure Head No : 273

Account No. & Name	Account No.	As Per Department Books				Balance as per Treasury Accounts as at 31/12/2011
		<b>Opening Balance as at 01/01/2011</b>	<b>Debits during the year</b>	<b>Credits during the year</b>	<b>Balance as at 31/12/2011</b>	
		<b>Rs.</b>	<b>Rs.</b>	<b>Rs.</b>	<b>Rs.</b>	<b>Rs.</b>
I. Advances to Public Officers	273011	149,033,060.81	33,037,076.08	36,842,108.06	145,228,028.83	145,228,028.83
	273012	0	13,291,823.23	17,455,996.55	4,164,173.32	4,164,173.32
		149,033,060.81	46,328,899.31	54,298,104.61	141,063,855.51	141,063,855.51
II. Other Advances						
III. Miscellaneous Advances						
IV. Deposit Accounts						
(i) General Deposits	6003/0000/00/0019/0000/000	0.00	0.00	0.00	0.00	0.00
(ii) Other Deposits	6003/0000/00/0049/0000/000	142,241,288.99	205,183,556.28	328,484,393.60	265,542,126.31	265,542,126.31

**Summary Report on Imprest Accounts - 2012**

Name of Ministry / Department / District Secretariat: District Secretariat -

Expenditure Head No. : 273

Puttalam

Account No.	As per Department Books				Balance as at 31/12/2011 as per treasury Books. (Rs.)
	Opening Balance as at 01/01/2011 (Rs.)	Total debits during the year (Rs.)	Total credits during the year (Rs.)	Closing Balance as at 31/12/2011 (Rs.)	
1	2	3	4	5	6
7002/0/0/312/11	0	3,815,093,565.18	3,815,093,565.18	-	-
.....	.....	.....	.....	.....	.....
.....	.....	.....	.....	.....	.....
.....	.....	.....	.....	.....	.....
.....	.....	.....	.....	.....	.....

1. Please show reasons for difference between above 5 and 6.

(1) Remitted to the Treasury but not updated cash book balance as at 31/12/2011

0

(2) Other reasons .....

0

0

2. Describe the balance shown in above 5 , as follows

(1) Unsettled sub imprest (Advances)

-

(2) Errors when summary of accounts is prepared (if any).

0

-

