



## වර්ෂික කාර්යසාධන හා ගිණුම් වාර්තාව - 2013

செயற்றிறன் அறிக்கைகளும்  
ஆண்டுக் கணக்குகளும் - 2013  
**ANNUAL PERFORMANCE AND  
ACCOUNTS REPORT - 2013**



**දිස්ත්‍රික් ලේකම් කාර්යාලය  
මාතලේ**

**மாவட்ட செயலகம்  
மாத்தளை**

**DISTRICT SECRETARIAT  
MATALE**

දුරකථන 066 2222233

**වාර්ෂික කාර්යසාධන හා  
ගිණුම් වාර්තාව**

செயற்றிறன் அறிக்கைகளும்  
ஆண்டுக் கணக்குகளும்  
**ANNUAL PERFORMANCE AND  
ACCOUNTS REPORT**

**2013**

සකස් කිරීමට අවශ්‍ය උපදෙස් සැපයීම  
කේ.එච්.පී.මීගස්මුල්ල මිය  
දිස්ත්රි.ක් ලේකම්/දිසාපති

සකස් කිරීම හා පිට කවර නිර්මාණය  
එම්.එම්.මහසෙන් අමරසිංහ මහතා  
සංවර්ධන සම්බන්ධීකාරක

සකස් කිරීම සඳහා සහාය දැක්වීම  
අයි.එස්.සිල්මියා මෙනවිය  
ඩබ්.එම්.කේ.පී.එම්.මුදිතාංජලී මිය  
(සංවර්ධන නිලධාරීන්)

භාෂා පරිවර්තනය  
අරච්චිද විල්ගමුව මහතා (භාෂා පරිවර්තක)  
කේ.එම්.පී.ආර්.පී.හේමමාලා මිය (භාෂා පරි.)  
එච්.එම්.සමන් කුමාර මය (භාෂා පරි.)  
සේපාලි අධිකාරනායක මිය (භාෂා පරි.)

**- CONTENT -**

<b>No</b>	<b>Description</b>	<b>Page No.</b>
01	Message of District Secretary	04
02	Introduction of District Secretariat	05-06
03	Introduction of the District	06-09
04	Basic Statistical details of the District	09-13
05	Oganizational Structure of District Secretariat	14
06	Development Targets	15-16
07	Administrative & Human Resource management	17-31
08	Agricultural Development	32-33
09	Social Development & Economical Development	34-44
10	Controlling of Planning & Progress	45-46
11	Granting variousPermits / License	47
12	Religious Affairs & Spiritual Deveopment	48-51
13	Environment Protection	52
14	Empowering poor Community	53-55
15	Entrepreneur Development	56-57
16	District Housing Development	58
17	Recognizing carrier Challenges & Career Guidance	59-61
18	Disaster Management and Hazards Study	62-64
19	District Land Use and Planning	65-66
20	Supplying Information and Maintaining	67-69
21	Registration of motor Vehicles and Transport Development	70
22	District Election Affairs	71
23	District Registration Activities	72-73
24	District Media Activities Co-ordination	74
25	Payments of Line Ministries and Other Department	75
26	Financial Management	76-86

### The Message of District Secretary



It is with great Pleasure that take in this opportunity to express my happiness to deliver this message for Performance and Annual Accounts Report of Matale District for the year 2013, contenting the Information of implemented various Programs as well as its Accounts report for enhancing livelihood of the public and strengthen of District Administration.

It is happy to say that, we made maximum contribute as a district of Matale to enhancing livelihood of the people with strengthen regional administration and following proper coordination among the all public and private institutes. I wish that all benefits assist to reach economical development of the people.

Further, we made maximum contribution to the national development, following proper plans and completed them as a successful manner is a remarkable matter.

In addition to that we implemented critical decisions to increase paddy cultivation, big onion cultivation, vegetables and minor exporting crops production. All benefits assist to this will be connected to the people in the district. Further, we implemented Divi Neguma, Mags Neguma and Gama Neguma national programmes as very successful manner.

Without frame of economical development, we have implemented various spiritual programs to establish well being society. We have implemented women empowering, child protection and welfare, adult welfare programs. As well as done remarkable programs such as spiritual and national intergration to build up harmony within the nations. I believe these programs helpful to build up well being society and minimizing social issues of the district.

I hope follow a proper and effective plan to achieve goals concerning on previous year experiences in the next year.

Further, my gratitude is extended to Honorable Clergies, Hon: Ministers and Parliamentarians, Secretaries to the Ministers, Heads of Departments, Staff officers and Their Staffs, Volunteers and General Public. And convey my hart full thanks to my staff officers and all staff of the district secretariat for the co-operation they extended to the District Secretary to make the activities with success in the year 2013 and also media persons who inform the problems and necessities of the city residents by the media.

K.H.A.Meegasmulla  
Government Agent/District Secretary  
Matale.

## 02. Introduction of District Secretariat

### (2.1) Basic Introduction of District Secretariat:-

There are 11 Divisions in Matale District and District Secretariat has been established to conduct Administrative activities among 11 Divisional Secretariats, distributing finance allocation to provide require facilities to develop human resources. Responsibility of District Secretariat is elevation of living condition of the people in the district by supervision & co-ordination of all activities performed by Divisional Secretariats & other Governmental Institutions.

### (2.2) Vision & Mission of District Secretariat:-

#### ❖ Vision :-

To reach as the excellent administrative center to the Island through establishing a public related administration

#### ❖ Mission :-

Contribution of the National Development Optimally managing necessary human and physical resources, ensuring a productive and efficient service to fulfill needs of people in Matale District

### (2.2) Objectives of District Secretariat:-

01. Manipulation district administration for national development.
02. Adaptation of financial resources productively through maintaining an excellent financial management.
03. Use of Physical & Human resources in district for development activities.
04. Implementation of meaningful customer service
05. Strengthen of District development by making development plans according to national policy.
06. Build up all religious & cultural uplift in the District
07. Improvement of District Information supply to reinforce development activities
08. Be the Productivity Golden Honour in year 2014.

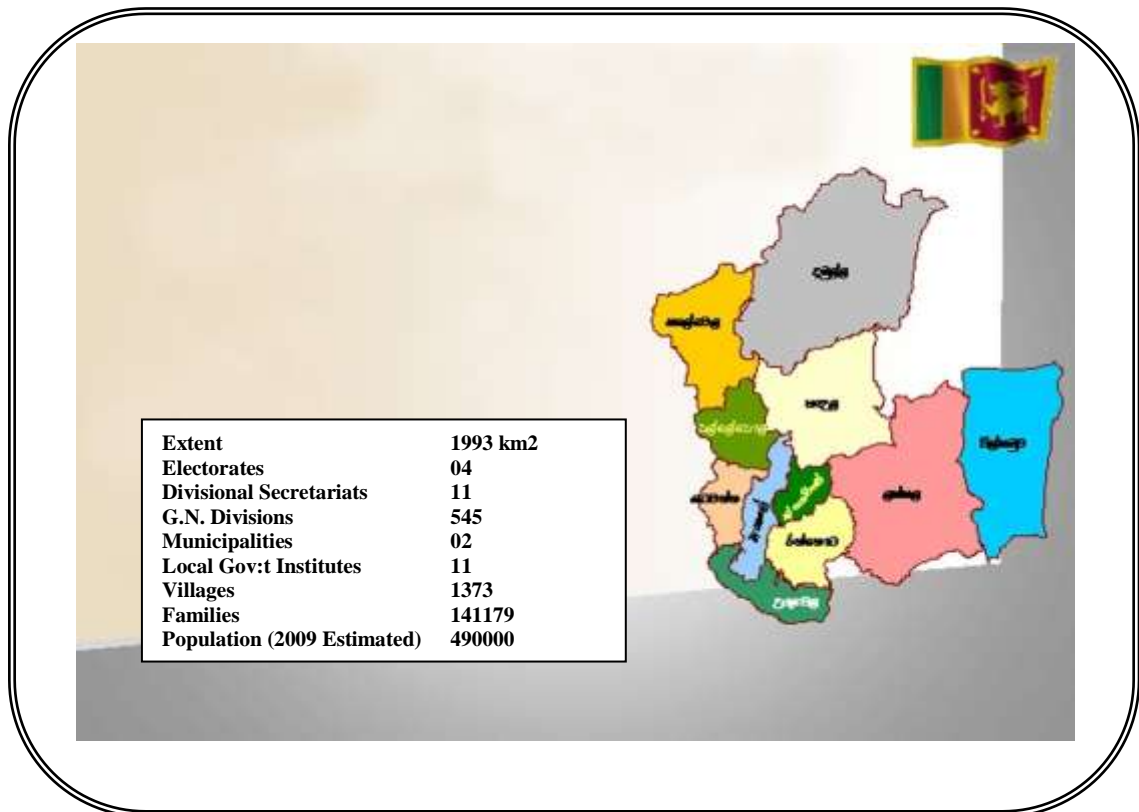
### (2.3) Role of District Secretariat:-

- ❖ Controlling District administrative activities with coordination of Divisional administrative activities.( All establishment activities relevant to officers, , establishment activities of Gram Niladharie's , activities on vehicles)

- ❖ Providing financial provisions required to Divisional Secretariats & continues financial management.
- ❖ Coordination & progress control of all planning activities in Divisional level
- ❖ Human resources development activities of all officers engaged in district Administrative affairs. (Skills development, Training)
- ❖ Coordination & controlling of progress of livelihood development activities of people in the district.
- ❖ Planning & supervision of all construction works relevant to empower Administrative activities in the district.
- ❖ Coordination of Agricultural & Environmental activities and make arrangements to solve problems associated with that.
- ❖ Manipulation of necessary activities for spiritual development & communal affability in the District.
- ❖ Coordination activities on land problems
- ❖ Issuing gun license & Explosive license
- ❖ Procurement of District information
- ❖ Implementation of programmes on District Entrepreneur Development

### (03) Introduction of of Matale District

- ❖ **District Map**



## **Geographical Situation, Historical Background & Divisional Administration of Matale District**

Matale District is considered as the central region of the island & the total area is 1993.3Km<sup>2</sup>. It deputes Northern part of the Central Province Spreads from 80. 28° to 80.59° Easton altitudes & from 7.24° to 8.01° Nothern latitudes. It is an area content with natural resources and bounded North by Anuradapura, East by Polonnaruwa, Badulla & Ampara , and West by Kurunagala & South by Kandy Districts.

There are folklores receipt of the name “Matale”. One of it is the area called MaThula Colony has been assigned to his uncle by King Pandukabhaya, later become as Matale. As The King Gajaba invaded “Soli Rata” and brought & settled 12000 peoples in here this become as Matale. It is mentioned that “Mahatala” become as Mat ale because it is placed in a valley and surrounded by many mountains & this view can be accepted today also.

Matale District consists of 11 Divisional Secretary’s Divisions & 1373 villages. The current population is more than 400.000 & Sigiriya which is a wonderful creation in the world & Knuckles Mountain which is a natural heritage, increase beauty of Matale District.

### **Geographical Background.**

The situation of Matale District portrays the northern part of Central Province in Sri Lanka and the geographically matters portray the maps of Dambulla, Nalanda, Kurunegala Polonnaruwa, Elahera and Rangala (scale 1: 63360) of Survey Department.

Matale district enriches with Kotcite, Nice, Granite, Calcimine Lime stones, Dolomite, Kindlier kind Gannet, Silimanite, Zest and Graphite stones. The mountain ranges basically contain with Chan kite. This basic stone makes Anticlines and Synclines complex structures with the effect of time and inner earth. For this the best example is Knuckles mountain range. The mountain range contains eroding stones. This situation leads to severe lands slides in that particular area.

According to the Geological category the valley of Mahaweli situates in the Matale district eastern boundary falls to Vijayan grade. This area is a Mahaweli river’s one of flooded area. Therefore the area especially contains with very rich soil varieties making many fertile lands for paddy cultivation.

There are three major geographical divisions of the district.

- 1 Northern Flat Lands
- 2 Matale Valley and Knuckles Mountain Ranges
- 3 Laggala Parallel Mountain Ranges

Northern flat lands contain with Dambulla, Galewela and Pallepola divisional secretary divisions. This land normally is a flat land, but there are several mountain peaks. Also this land is a rough land and Sigiriya Dambulla and Beliyakanda are historically most valuable places of the District. Normally this land altitude is 500-1000 feet. There are several tanks locate in this rough land since the ancient times. The major tanks are Kandalama and Dewahuwa, while Inamaluwa, Talkote and Sigiriya become minor tanks. Many tanks of Rajarata are fed by Sub Rivers of this valley. Kalawewa and Minneriya tanks are among them.

Matale area is nicely placed in a valley and surrounded by many mountains and hills. Knuckles, Guruluhela, Pansaltenna, Ovilikanda and Hunnasgiriya are lying among huge mountains. The natural beauty of the district is being added more values by the river of Sudu Ganga, flowing through the city. The many streams and water channels falling from these mountain ranges are constantly feeding the river and making the prosperous lives of dwellers around the area. When traveling from Matale to Wilgamuwa via Rattota, it is very possible to have nice view of beautiful Knuckles which seems as a fist of a human-being. The mountain is 4000 feet in height. This is the one of highly protected area in the island. Lakegala and Kalupahana are also some of popular peaks of the area due to many reasons.

Laggala parallel mountain ranges are the special feature in eastern bound of the Knuckles Mountain. This region contains with three parallel mountain ranges. These are spreading from south to the north bound. One spreads

from Telambugala to Wasgamuwa. Second one spreads from Wamarapugala to Amban Ganga via Ranamure. The third one is not seen clearly but it is spreading from Rambukoluwa to Laggala Udasiya Pattu. The water streams start from these mountains and join Amban Ganga at the northern limits.

The district forest extension is also complex. Its center, southwest and west parts contain up-country rain forests. Northern and Laggala-Wilgamuwa parts contain low country dry forests. The district is experienced both monsoons. But the north-east monsoon is heavier than the south-west monsoon. The knuckles mountain range is extremely high in bio-diversity and which is known as a national heritage of the country. A small plains situated near Pitawala village in this area is also important the place is mostly relate to the Hortain plains and one end of the plains is having a deep drop of the land, known as "*Punchi Lokanthaya*" among the community.

The district has possessed a variety of mineral resources since ancient time. Laggala, Kaluganga and Hattota Amuna have been famous for gems over many years. Wariyapola and Kaikawala are famous for mica. Talagoda and Owala- Rattota are famous for ceramics and also lime and granite industry have functioned as a major scale industry in this district, creating more benefits the residents.

### A GLIMPSE OF HISTORY

In the pre-ancient era, the many witnesses say that "Yaksha Gothra" had been living in the Matale area over considerable period of time. According to the written witnesses found, they had lived mainly in northern and eastern bounds of the district. The isolated mountain peaks which situated in the area had been more supportive to their life styles. A 3000 years old dead body, found near Ibbankotuwa, Dambulla is obviously bringing the proof the above saying.

During the sway of The Great King Rawana, 4000 years ago his capital city has been Lankapura which locates close to Lakegala Laggala. Still there are many memories being left to be seen which belong to The Great King Ravana in Lakegala.

According to the history Kuweny's native place has been Bambawa, Galewe. Her farther's name was Bamba, and he was the ruler in that area. After the destruction of "Yaksha Gothra" that area had been left as ruins.

Early settlers were built the first civilization in the 1<sup>st</sup> century BC the settlements were spread all over the island, because of insufficient water supply for paddy cultivation. The historical implications noted that King Gajaba (I) invaded "Solie Rata" and brought 12000 peoples here and settled them mostly in Matale District. There are 17 settlement places situated in Matale District, many are in Galewela and Pallepola areas.

During The sway King Walagamba era (BC 89-77) is known as the renowned and renaissance period of Matale District. The king Kashyapa period is the next golden era of Matale District (AD 470-497). After the assassination of his father, the king Kashyapa selected Sigiriya as his kingdom later Sigiriya "Alakamadawa" became a world heritage and its attractive frescoes populated all over the world which brings thousand and thousand tourists annually.

### TODAYS' MATALE

The current population of Matale is more than 400,000, and majority is Sinhalese Buddhists. There are some Muslims and Tamils occupation in the district too. The main cities of the district are Matale, Dambulla, Galewela and Rattota. Main income source is agriculture while paddy becomes the main crop of the district. In addition to that the minor export crops and vegetables are also being cultivated in the district. There are several major scale tea factories in the district too. The Paddy is mostly being cultivated with irrigated water in Dambulla and Wilgamuwa.

Vegetable crops are also cultivated successfully in the district. Mostly the big onions and tomatoes are growing well in the area. Dambulla and Yatawatta are the bulk producing areas of the district.

Several numbers of historically important places are located in Matale district. One is most impressive place called Sigiriya which is now making new addition to the world history as the eight wonder of the world. There are many religiously important places like Aluvihare, Sri Muttumari Amma Kovil, Wahakotte Church,

Nalanda Gedi Gee, and Menikdena Temple, while Lakegala, Knuckles Mountain and Wasgamuwa National Park are making more aesthetic values. There are some star range hotels located at Dambulla, Elkaduwa, Matale and Rattota areas. Rangiri Dambulla International Cricket Stadium situated in Matale District is enhancing the reputation of the district.

The Exipeldspor, Zircon and Gems are mostly economically valuable natural mines which bring wealthy and prosperity to the people living in the district. Especially, Laggala and Wilgamuwa areas are considered as very remote areas in the island

### (3) Basic statistical details of the District:-

#### 01. Population

##### Population and Density of D.S. Divisions

D.S.Division	Population				Density
	Urban	Rural	Estates	Grand Total	
Galewela	0	69550	165	69715	373
Dambulla	23315	48721	46	72082	162
Naula	0	30652	0	30652	111
Pallepola	0	28930	558	29488	364
Yatawatta	0	28694	1419	30113	478
Matale	34926	38817	786	74529	1065
Ambangankorale	0	12987	2580	15567	283
Laggala	0	11940	147	12087	31
Wilgamuwa	0	29298	0	29298	114
Rattota	0	43290	7866	51156	517
Ukuwela	964	60713	5865	67542	877
Total	59205	403592	19432	482229	242

#### ❖ Population by Sex in D.S.Division

D.S.Division	Male		Female		Total	
	Number	%	Number	%	Number	%
Galewela	33557	14.4	36158	14.5	69715	14.5
Dambulla	36285	15.6	35797	14.3	72082	14.9
Naula	14998	6.4	15654	6.3	30652	6.4
Pallepola	14024	6.0	15464	6.2	29488	6.1
Yatawatta	14434	6.2	15679	6.3	30113	6.2
Matale	35486	15.2	39043	15.7	74529	15.5
Ambangankorale	7298	3.1	8269	3.3	15567	3.2
Laggala	6211	2.7	5876	2.4	12087	2.5
Wilgamuwa	14569	6.3	14729	5.9	29298	6.1
Rattota	24110	10.4	27046	10.8	51156	10.6
Ukuwela	31883	13.6	35659	14.3	67542	14.0
Total	232855	100.0	249374	100.0	482229	100.0

❖ **Population Distribution by age**

Age Groups(Years)	Population	%
Below 15	127811	26.5
15-59	296586	61.5
Over 60 years	57832	12.0
All ages	482229	100

**02. No. of Students**

No.	D.S.Division	No.of Students
01	Galewela	13189
02	Dambulla	13837
03	Naula	6056
04	Pallepola	5491
05	Yatawatta	4524
06	Matale	26788
07	Ambangangakorale	1986
08	Laggala	2081
09	Wilgamuwa	5628
10	Rattota	8637
11	Ukuwela	9142
	Total	97359

**03. Roads Information**

Grade	Paved		Not Paved		Concrete		Total Length (k.m)
	Length	%	Length	%	Length	%	
A	165.72	10.5	0	0	0	0	165.72
AB	8.07	0.5	0	0	0	0	8.07
B	439.6	27.8	8.94	0.3	0	0	448.54
C	342.34	21.6	50.53	1.8	0	0	392.87
D	236.47	14.9	92.27	3.3	1	0.1	329.74
Urban Roads	65.28	4.1	150.2	5.4	25.99	3.7	241.47
Pradeshya sabha Roads	326.09	20.6	2496.96	89.2	670.32	96.1	3493.37
All Roads	1583.57	100.0	2798.9	100.0	697.31	100.0	5079.78

**04. Industries Information**

No.	Category	Number
01	Mining	305
02	Food, Beverages, and Tobacco	788
03	Garments, Clothes and Leather	160
04	Timber and Furniture	542
05	Paper , Printing	43
06	Chemicals , petroleum, Rubber and Plastics	19
07	Non metallic mineral production	66

08	Basic Metal Industries, Metal Goods, Machineries & Tools	107
09	Other production industries	340
10	Aquatic and water supply	37
	Total	2407

#### 05. District Land Usage

Land Nature	Extant (Hectare)	%
01. Asweddumized puddy fields	22353.7	11.2
02. Gardens/ Developed Land	37174.3	18.7
03. thicket scrub & chena	11699.0	5.9
04. Main Crops	17589.0	8.8
05. Forests	76601.0	38.4
06. Reservoirs	4100.0	2.1
07. Barren land / abandoned land	2265.0	1.1
08. Other Cultivation	26369.0	13.2
	1149.0	0.6
Total	199300.0	100.00

#### 06. Government beneficiaries in the District

D.S.Division	T.B	Cancer	Talasemia	Leprasy	Public Subsidies
Galewela	04	71	22	3	1647
Dambulla	6	85	10	1	2155
Naula	10	33	4	1	1269
Pallepola	4	30	0	0	1036
Yatawatta	1	25	6	0	1123
Matale	11	11	1	0	1265
Ambangakorale	1	17	0	1	914
Laggala	3	9	0	0	1088
Wilgamuwa	16	19	2	2	963
Rattota	1	34	1	1	1286
Ukuwela	4	36	4	1	1528
Total	61	370	50	10	14274

#### 07. Finance Institutions in the District

D.S.Division	Peoples' Bank	Bank of Ceylon	N.S.B	SMI Bank	Sampath Bank	Comercial Bank
Galewela	1	1	1	0	1	1
Dambulla	1	2	1	0	1	1
Naula	1	1	1	0	0	0
Pallepola	1	1	0	0	0	0
Yatawatta	1	1	0	0	0	0
Matale	1	2	1	1	1	1
Ambangakorale	0	0	0	0	0	0
Laggala	0	1	0	0	0	0

Wilgamuwa	1	1	0	0	0	0
Rattota	1	1	0	0	0	0
Ukuwela	1	1	0	0	0	0
Total	9	12	4	1	3	3

#### 08. Religious Centers in the District

D.S.Division	Temples	Kowils	Mosques	Churchs
Galewela	51	3	25	14
Dambulla	66	0	3	2
Naula	42	3	2	1
Pallepola	36	7	3	0
Yatawatta	37	6	6	3
Matale	35	21	18	8
Ambangankorale	10	21	0	1
Laggala	24	0	0	0
Wilgamuwa	31	0	0	0
Rattota	40	62	10	11
Ukuwela	50	26	13	0
Total	422	149	80	40

#### 09. Dhamma Schools and Pre Schools in the District

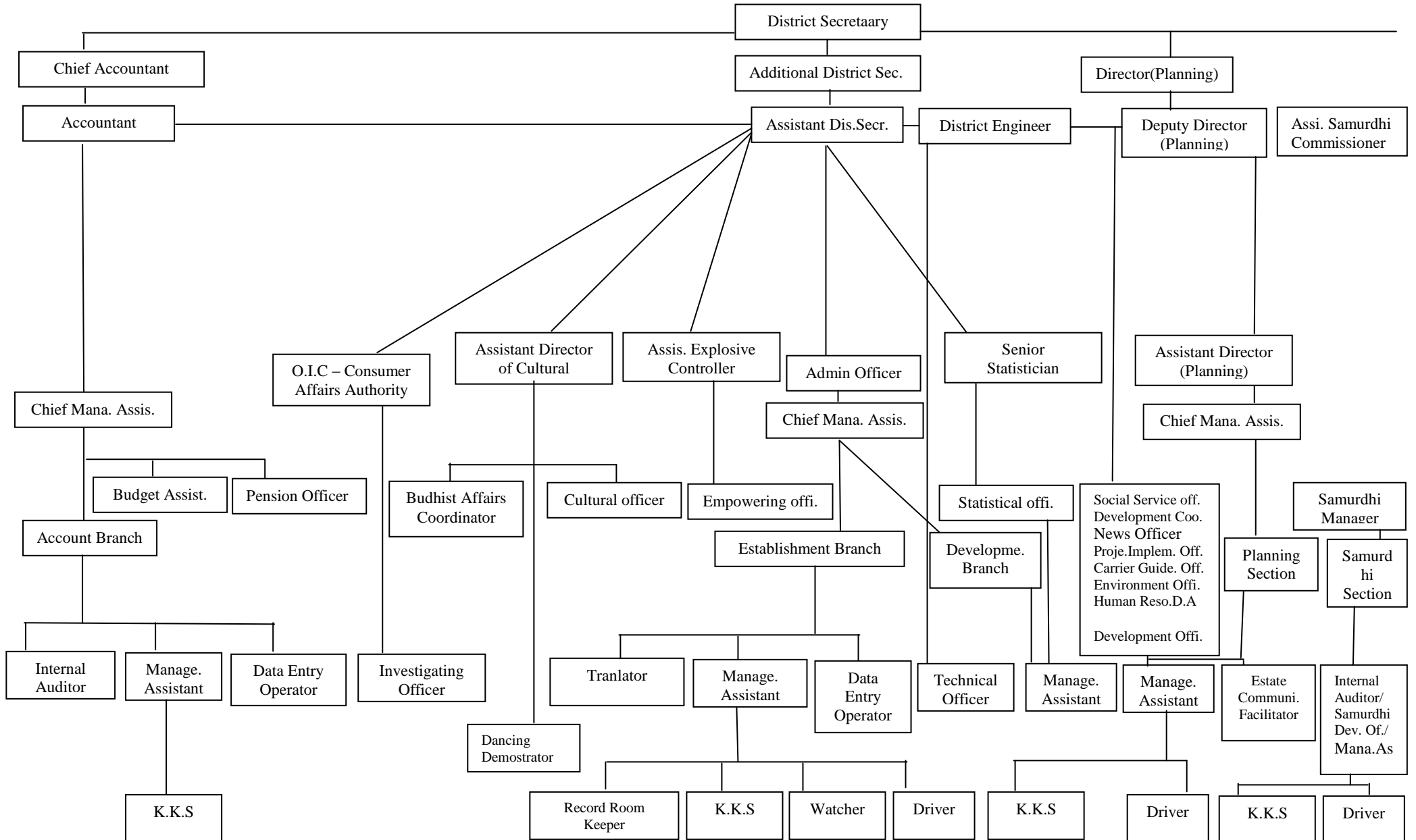
D.S.Division	Dhamma Schools	Pre Schools
Galewela	45	71
Dambulla	59	79
Naula	36	42
Pallepola	35	38
Yatawatta	30	29
Matale	31	60
Ambangankorale	9	13
Laggala	20	17
Wilgamuwa	23	47
Rattota	29	50
Ukuwela	40	53
Total	362	499

#### 10. Services of Local Government Institues

D.S.Division	Ayurvedic dispensaries	Cemetries	Week Fairs	Public Gardens / Stadiums/Play grounds	Libraries
Galewela	1	96	3	2	6
Dambulla					
Pradesiya Sabha	0	57	0	3	3
M/C	0	12	1	2	1
Naula	1	52	1	1	3
Pallepola	1	35	1	2	2
Yatawatta	0	53	0	9	3

Matale					
Pradesiya	1	21	0	4	2
Sabha					
M/C	1	1	1	7	1
Ambangakorale	0	13	0	2	2
Laggala	0	17	1	3	6
Wilgamuwa	0	17	4	2	4
Rattota	2	1	0	1	4
Ukuwela	1	53	0	2	5
<b>Total</b>	<b>8</b>	<b>428</b>	<b>12</b>	<b>41</b>	<b>43</b>

**(04) Organizational Structure of District Secretariat**



## 05. Development Targets to be achieved by year 2016 in Matale District

### 01 Paddy Cultivation:- (Development Target)

❖ Increase annual Paddy production by 8%  
(M.T. 148000 in 2016)

#### ❖ Strategies

01. Increase production of seed paddy up to 85000 bushel
02. Increase use of Organic Fertilizers up to 6000MT
03. Increase of harvest through maximum water management
04. Minimize post harvest damages from 16% to 8%

### (02) Minor Crops Cultivation (Development Target)

- ❖ Increase up to 9917 Hectare in 2016
- ❖ Increase production upto 6681 MT in 2016

#### ❖ strategies

01. Extension of new cultivations
02. Post Harvest
03. Increase of productivity
04. Training & new technical methods

### (03) Promotion of extra Food Crops (Development Target)

Increase extend of cultivation land 4,500 Hectare for increasing 5700 MT in 2016

- ❖ Cultivation in the middle season
- ❖ Use of Organic fertilizers
- ❖ Development of crop extension
- ❖ Motivation to cultivate in Yale Season

### (04) Promotion of Big Onion Cultivation (Development Target)

- ❖ Increase annual production by 80000 MT by year 2016

#### Strategies

01. Increase production of quality seed big onion from 14200 Kg-20,000Kg
02. Extension of cultivation in non traditional areas –Wilgamuwa/Laggala

(2012-160 Hectare 2016 – 1100 Hectare)

### (05) Extension of Coconut Cultivation (Development Target)

- ❖ Distribution of 313075 Coconut plants in 2016

#### ❖ Strategies

01. Provide 02 Coconut plants for each home garden
02. Extension of cultivation as a commercial cultivation from ½ Acre to 2 ½ Acre
03. Implementation of 1.200 extension programmes.

### (06) Reconstruction of Minor Irrigation (Development Target)

- ❖ No. of reconstructed & to be constructed lakes & anicuts

2010	2011	2012	(2013-2016)
125	83	127	623

❖ Rs. 80 Million is needed for this per year

❖ 958 Tanks & Anicuts (73%) will be completed in 2016

**(07) Road Development (Development Targets)**

Expansion of roads & paving carpets - 490.38 Km  
 Development of maintenance - 135Km  
 Increase of the quality of rural roads -871.76Km (65%)

**(08) Education Development (Development Target)**

Development of quality secondary schools 2011-10  
 Enhance quality level of education 2015-33  
 Human Resource Development 2016-33  
 Primary School Development 2016-86  
 Empowering Special education & non formal education 2016-16  
 Increase correlation in School community 2016-16  
 Implementation career guidance programmes 2016-91

**(06) Industries (Development Target)**

Strategies	2010	2011	2012	2013-2016
Training programmes for industries, domestic & supply technical services	150	300	750	6600
Commencement of new industries and development of existing industries	64	64	56	325
Technical training for entrepreneurs	31	20	20	80
Increase unites of Industrial zones	15	20	20	80

## 06. Administration and Human Resources Management

### 1.1 Office Cadre

Designation	Office											
	District Secretariat			Divisional Secretariat, Galewela.			Divisional Secretariat, Naula.			Divisional Secretariat, Matale.		
	Approved	Existing	Vacant	Approved	Existing	Vacant	Approved	Existing	Vacant	Approved	Existing	Vacant
District Secretary	01	01	-	-	-	-	-	-	-	-	-	-
Additional District Secretary	01	01	-	-	-	-	-	-	-	-	-	-
Assistant District Secretary	01	01	-	-	-	-	-	-	-	-	-	-
Director (Planning)	01	01	-	-	-	-	-	-	-	-	-	-
Divisional Secretary	-	-	-	01	01	-	01	01	-	01	01	-
Assistant Divisional Secretary	-	-	-	01	01	-	01	01	-	02	02	-
Chief Accountant	01	01	-	-	-	-	-	-	-	-	-	-
Accountant	01	01	-	01	-	01	01	01	-	01	01	-
Assistant Director (Planning)	02	02	-	01	01	-	01	01	-	01	01	-
Administrative Officer	01	01	-	01	-	01	01	01	-	01	01	-
Administrative Grama Niladhari	-	-	-	01	01	-	01	01	-	01	-	01
Translator	01	01	-	01	-	01	01	01	-	01	01	-
Development Co-ordinator	02	02	-	01	01	-	01	-	01	01	01	-

Designation	Office											
	District Secretariat			Divisional Secretariat, Galewela.			Divisional Secretariat, Naula.			Divisional Secretariat, Matale.		
	Approved	Existing	Vacant	Approved	Existing	Vacant	Approved	Existing	Vacant	Approved	Existing	Vacant
Addi: District Registrar	-	-	-	01	01	-	01	01	-	01	01	-
Management Assistant	24	24	-	28	26	02	24	21	03	34	30	04
Data Entry Operator	02	02	-	01	01	-	01	-	01	01	01	-
Technical Officer	01	01	-	01	-	01	01	01	-	01	01	-
Draughtsman	01	01	-	-	-	-	-	-	-	-	-	-
Grama Niladhari				59	37	22	52	28	24	52	37	15
Receptionist	01	01	-	-	-	-	-	-	-	-	-	-
Driver	04	04	-	02	02	-	02	02	-	02	02	-
Record Keeper	01	01	-	-	-	-	-	-	-	-	-	-
O.E.S. (K.K.S)	07	09	-	05	05	-	04	04	-	11	09	02
Watcher	03	01	-	02	02	-	02	02	-	02	01	01

Designation	Office											
	Divisional Secretariat, Dambulla			Divisional Secretariat, Pallepola.			Divisional Secretariat, Rattota.			Divisional Secretariat, Ukuwela.		
	Approved	Existing	Vacant	Approved	Existing	Vacant	Approved	Existing	Vacant	Approved	Existing	Vacant
District Secretary	-	-	-	-	-	-	-	-	-	-	-	-
Additional District Secretary	-	-	-	-	-	-	-	-	-	-	-	-
Assistant District Secretary	-	-	-	-	-	-	-	-	-	-	-	-
Director (Planning)	-	-	-	-	-	-	-	-	-	-	-	-
Divisional Secretary	01	01	-	01	01	-	01	01	-	01	01	-
Assistant Divisional Secretary	02	01	01	01	01	-	01	01	-	01	01	-
Chief Accountant	-	-	-	-	-	-	-	-	-	-	-	-
Accountant	01	01	-	01	01	-	01	01	-	01	01	-
Assistant Director (Planning)	01	01	-	01	01	-	01	01	-	01	01	-
Administrative Officer	01	01	-	01	01	-	01	01	-	01	01	-
Administrative Grama Niladhari	01	01	-	01	01	-	01	01	-	01	01	-
Translator	01	-	01	01	-	01	01	-	01	01	-	01
Development Co-ordinator	01	01	-	01	01	-	01	-	01	01	01	-

Designation	Office											
	Divisional Secretariat, Dambulla			Divisional Secretariat, Pallepola.			Divisional Secretariat, Rattota.			Divisional Secretariat, Ukuwela.		
	Approved	Existing	Vacant	Approved	Existing	Vacant	Approved	Existing	Vacant	Approved	Existing	Vacant
Addi: District Registrar	01	01	-	01	01	-	01	01	-	01	01	-
Management Assistant	30	27	03	23	18	05	28	23	05	26	24	02
Data Entry Operator	01	01	-	01	01	-	01	01	-	01	01	-
Technical Officer	01	01	-	01	01	-	01	01	-	01	01	-
Draughtsman	-	-	-	-	-	-	-	-	-	-	-	-
Grama Niladhari	59	47	12	44	21	23	54	34	20	73	48	25
Receptionist	-	-	-	-	-	-	-	-	-	-	-	-
Driver	02	01	01	02	02	-	02	02	-	02	02	-
Record Keeper	-	-	-	-	-	-	-	-	-	-	-	-
O.E.S. (K.K.S)	05	05	-	04	04	-	05	03	02	06	08	-
Watcher	02	01	01	02	02	-	02	02	-	02	-	-

Designation	Office											
	Divisional Secretariat, Yatawatta			Divisional Secretariat, Wilgamuwa.			Divisional Secretariat, Laggala.			Divisional Secretariat, Ambanganga.		
	Approved	Existing	Vacant	Approved	Existing	Vacant	Approved	Existing	Vacant	Approved	Existing	Vacant
District Secretary	-	-	-	-	-	-	-	-	-	-	-	-
Additional District Secretary	-	-	-	-	-	-	-	-	-	-	-	-
Assistant District Secretary	-	-	-	-	-	-	-	-	-	-	-	-
Director (Planning)	-	-	-	-	-	-	-	-	-	-	-	-
Divisional Secretary	01	01	-	01	01	-	01	01	-	01	01	-
Assistant Divisional Secretary	01	01	-	01	-	01	01	-	01	01	01	-
Chief Accountant	-	-	-	-	-	-	-	-	-	-	-	-
Accountant	01	01	-	01	-	01	01	-	01	01	01	-
Assistant Director (Planning)	01	01	-	01	01	-	01	01	-	01	01	-
Administrative Officer	01	01	-	01	-	01	01	-	01	01	01	-
Administrative Grama Niladhari	01	01	-	01	-	01	01	01	-	01	01	-
Translator	01	-	01	01	-	01	01	-	01	01	-	01
Development Co-ordinator	01	-	01	01	-	01	01	-	01	01	01	01

Designation	Office											
	Divisional Secretariat, Yatawatta			Divisional Secretariat, Wilgamuwa.			Divisional Secretariat, Laggala.			Divisional Secretariat, Ambanganga.		
	Approved	Existing	Vacant	Approved	Existing	Vacant	Approved	Existing	Vacant	Approved	Existing	Vacant
Addi: District Registrar	01	01	-	01	01	-	01	-	01	01	01	-
Management Assistant	25	19	06	24	23	01	24	14	10	20	15	05
Data Entry Operator	01	-	01	01	-	01	01	01	-	01	-	01
Technical Officer	01	01	-	01	01	-	01	01	-	01	01	-
Draughtsman	-	-	-	-	-	-	-	-	-	-	-	-
Grama Niladhari	56	41	15	39	26	13	37	18	19	20	10	10
Receptionist	-	-	-	-	-	-	-	-	-	-	-	-
Driver	02	02	-	02	01	01	02	01	01	02	02	-
Record Keeper	-	-	-	-	-	-	-	-	-	-	-	-
O.E.S. (K.K.S)	05	05	-	04	04	-	04	04	-	04	02	01
Watcher	02	02	-	02	02	-	02	02	-	02	03	-

**6.2 The details of departed officers in District Secretariat with effect from 01.01.2013 to 31. 12. 2013(Retirement Resignation/Transfers/Died)**

Name	Designation	Service/Grade	Date	Nature of the Transfer
Mrs. M.P. Parwathi	Management Assistant	P.M.A.I	01.01. 2013	Transfer
Mrs. Sanjeevani Kumari	-Do-	P.M.A.I	01.01. 2013	-Do-
Mrs. C. K. Palipana	-Do-	P.M.A.I	08. 01. 2013	-Do-
Miss. O.G. Swarnalatha	-Do-	P.M.A.I	08. 01. 2013	-Do-
Mrs. Janaki Kumari	-Do-	P.M.A.I	08. 01. 2013	-Do-
Mrs. Rajina Ariyadasa	-Do-	P.M.A.I	08. 01. 2013	-Do-

**6.3 The details of Transfers and new appointment to District Secretariat Matale From 01.01.2012 to 31.12.2012**

Name	Designation	Previous Office	Nature	Date
Mrs. S.C.M.Chandra Senewirathna	P.M.A.I	Agrarian Service Development District Office- Matale	Transfer	01. 01. 2013
Mrs. H.M.S.K. Rathna Banda	-Do II-	Divisional Secretariat- Naula	Transfer	07. 01. 2013
Mrs. N.W.D. Rathnayake Manike	-Do-II	Divisional Secretariat- Naula	Transfer	07. 01. 2013
Mrs. A.D.S. Fernando	-Do-II	Divisional Secretariat- Ukuwela	Transfer	08. 01. 2013
Miss. M.M. Sanjeevani Sirisena	-Do-II	Divisional Secretariat- Rattota	Transfer	08. 01. 2013
Mrs. N.G.C.K. Karunathilake	-Do-II	Divisional Secretariat- Ukuwela	Transfer	08. 01. 2013

**6.4 The details of the staff in Divisional Secretariats in the District to the date of 31.12.2013 (Only major posts)**

Divisional Secretariat	Divisional Secretary	Assistant Divisional Secretary	Accountant
Laggala	Mr.P.A.Sarathchandra	-	Vacant
Yatawatta	Mr.A.M.J.K.N. Adikari	Mrs. F.R.M. Riyaldeen	Miss. W.M.H. Rathnayake
Ukuwela	Mr. E.W.N.A.Egodawela	Mrs.G.N.Senarathna	Mrs.E.M.J.D.K.Ekanayake
Wilgamuwa	Mr.H.M.N.Dinipriya	-	Vacant
Ambanganga Korale	Mrs. Wasantha Warnakulasooriya	Mr.Wijayakumar	Vacant
Galewela	Mrs. H.M.K.C.K. Atapattu	Miss.H.M.C.Ekanayaka	Vacant

Pallepola	Mr. W.M. Ananda	Mr. M.M.M.C.A.Hidagoda	Mr. M.A.Priyanga Milajith
Dambulla	Mrs. M.P.G.A. Hewapathirana	Mrs. M.K. Geethangani Morawaka	Mr. H.G.D.M. Aluthwatta
Naula	Mr.Nishantha Karunatilaka	Mr.S.D.P.Jayasooriya	Mr. M.S.K Priyantha
Matale	Mrs. K.P.K.L.P. Maduwanthi	Mrs. D.M.G.K. Dissanayake	Mrs. S.M.N. Senawirathna
Rattota	Mrs. B.M.P.B.Wijebandara	Mr. Y.G.Y.P.Dayarathna	Mr. A. M. N.Peries

#### 6.5 Vehicle Maintenance:

No	Maintenance Task (Description)	Vehicle Category (Cab/Jeep/Van)	Expenditure (Rs)
01	Servicing		751283/=
02	Reparing (Replacing Tyres, Wheel Alignment, Break pad, Sheet cover, A.C.filter, etc)		1304352/=

#### 6.6 Collecting Income of Vehicles

No	Maintenance Task (Description)	Vehicle Category (Cab/Jeep/Van)	Expenditure (Rs)
01	Van Hiring	CP NB - 0861	43540/=

#### 6.7 Administration of Grama Niladhari

No	Task	No	Progress %
01	Solving transfers	15 ( within the Division)	100 %
02	Inquiries	01	100 %
03	Matters relevant to foreign employments	02	100 %

#### 6.8 Circuit Bungalow

No	Description	No /Amount (Rs)
01	Lodging facilities	163 (allocated Days)
02	Received income	115145.00
03	Received income of quarters	1430653.00

#### 6.9 Other inquiries

No	Inquiries (Description)	Progress
01	Against Grama Niladhari K.B.H. Wijerathna Banda	100%
02	Against Grama Niladhari R.M.S.B. Rathnayake	25%
03	Against Grama Niladhari I.D.G.S.Dharmasena	25%

## 6.10 Appointments to the Graduate Trainees

No	Description	No
01	Recruiting Graduates	1140
02	Transfers	35
03	Changing Posts	05

## 6.5 Information of Training Programmes

### ❖ Applications for the Training Programmes

Officer	No: of Application	Course	Institute
Graduate Trainees & P. M. A Officers	70	Various Courses	SLIDA

### ❖ Training Programmes conducted by District Secretariat

Index No.	Training Course	Participants	No	Expenditure (Rs)
01	Basic Computer- 01	Graduates, Public Management Assistans & field Officers	16	26279.00
02	Basic Computer - 02	Graduates, Public Management Assistans, field Officers & Grama Niladaries	19	27488.00
03	MS. Excel - 01	Graduates, Public Management Assistans & field Officers	17	17135.00
04.	MS. Excel - 02	Graduates, Public Management Assistans & field Officers	18	16800.00
05.	MS Power Point - 01	Graduates, Public Management Assistans & field Officers	19	11743.00
06	MS Power Point - 02	Graduates, Public Management Assistans & field Officers	18	12010.00
07.	Ms Access	Graduates, Public Management Assistans & field Officers	19	16470.00
08.	Project Management ( Programme 02)	Graduates, Public Management Assistans & field Officers	74	33803.00
09.	Office Management ( Programme 02)	Graduates, Public Management Assistans & field Officers	73	35424.00
10	Public Finance Management	Graduates, Public Management Assistans & field Officers	45	27811.00
11	Good Governance & Human Resource Management	Staff Officers, Graduates, Public Management Assistans & field Officers	120	37259.00
12	Inquiries Procedures	Graduates, Public Management Assistans & field Officers		
13	Training of District & Divisional Secretariat Office Procedures	SLAS Apprentice (Open- 2013)	09	2712.00
14	Training for Age Productivity	All Officers in District Secretariat	150	-
15	Files System Training	Field Officers	39	-

❖ **Officers Participated to training in other institute**

<b>Index No.</b>	<b>Training Course</b>	<b>No: of Participated officers</b>	<b>Institute</b>	<b>Expenditure (Rs.)</b>
01	Training for Technical Officers in areas faced to landslides	02	Ministry of Public Ad.& Home Affairs	-

❖ **Local and Foreign Scholarships**

<b>No</b>	<b>Description</b>	<b>No</b>	<b>Expenditure</b>
01	Awareness programme of Foreign Scholarships	17	-

❖ **Pictures of variose Training Courses**



## **6.6 Programmes of Information & Communication Technology Development**

Index No	Programme	Period	Description
01	Training programme of web sites for 11 divisional secretariats	01. 03.2013 to 14. 03. 2013	Downlord and preparing accurate details
02	Software applications for office computer data base	-	-
03	Enhancing email in lanka government network and arranging new email addresses	August 2013	Given email addresses to the officers and new 06 sections

## **6.7 Capital expenditure for empower administration activities**

### **❖ Constructions in 2013**

	Programme / Project	Constructed Value (with VAT)	Prograss		Special remarks
			Financial	Physical	
01	Partition of District Secretary Coordinating Office	112482.84	100%	100%	-
02	Partition of Media Unit, Internal Audit Section, Engineering Section, and Development Section	420354.80	100%	100%	-
03	Maintenance of Government Quarters No. 60/88	51619.10	100%	100%	-
04	Maintenance of Government Quarters No. 30/12	181195.61	100%	100%	-
05	Maintenance of Government Quarters No. 30/14	78793.32	100%	100%	-
06	Maintenance of Government Quarters No. 30/15	171779.48	100%	100%	-
07	Maintenance of Government Quarters No. 99/11	132915.99	100%	100%	-
08	Maintenance of Government Quarters No. 40/29/05	70602.89	100%	100%	-
09	Maintenance of Government Quarters No. 99/16	227127.70	100%	100%	-
10	Maintenance of Government Quarters No. 06	85462.47	100%	100%	-
11	Maintenance of the Residency	172424.60	100%	100%	-
12	Maintenance of Government Quarters No. 30/19	147435.81	100%	100%	-
13	Maintenance of Government Quarters No. 99/03	79666.65	100%	100%	-
14	Maintenance of Sri Sangamitta National School for Provincial Council Election 2013	170192.67	100%	100%	-
15	Maintenance of Government Quarters No. 40/29/3	225175.38	100%	100%	-
16	Maintenance of Government Quarters No. 30/13	174043.50	100%	100%	-

17	Maintenance of Government Quarters No. 40/21	58676.34	100%	100%	-
18	Maintenance of Government Quarters No. 89/07	192726.95	100%	100%	-
19	Maintenance of Government Quarters No. 12	138851.13	100%	100%	-
20	Maintenance of Government Quarters No. 14	311062.21	100%	100%	-
21	Maintenance of Government Quarters No. 18	278752.56	100%	100%	-
22	Maintenance of Government Quarters No. 89/5	275705.17	100%	100%	-
23	Maintenance of Government Quarters No. 40/13	60774.98	100%	100%	-
24	Maintenance of Government Quarters No. 40/17	78452.48	100%	100%	-
25	Rapid Maintenance of Circuit Bungalow	69168.58	100%	100%	-
26	Constructing of Disabling Access way	554997.51	100%	100%	-
27	Constructing New Access way for Circuit Bungalow	999996.37	100%	100%	
28	Maintenance of Government Quarters No. 16	239541.29	100%	100%	

❖ **Constructions under Capital Expenditure - 2013**

No	Programme / Project	Allocations (Rs)	Prograss%	
			Financial	Physical
01	Constructing Accountant Quarters of District Secretariat	4000000.00	3567184.59	100%
02	Constructing Accountant Quarters of Divisional Secretariat, Galewela	4100000.00	3767900.30	100%
03	Constructing Stores of Divisional Secretariat, Ukuwela	2000000.00	2000000.00	100%
04	Constructing complex of Divisional Secretariat, Galewela – stage I	2000000.00	2000000.00	100%
05	Improvements of Divisional Secretariat, Matale	2000000.00	1938622.40	100%
06	Constructing of Divisional Secretariat, Yatawatta – stage II	7900000.00	2203531.99	100%
07	Constructing Field Officer's building of Divisional Secretariat, Rattota		2000000.00	100%
08	Constructing Field Officer's building of Divisional Secretariat, Yatawatta – stage I advanced payments		1416220.99	100%
09	Constructing the conference hall of Divisional Secretariat, Dambulla		1500000.00	100%

## 7.2 Internal audit unit

### Information of the audit queries and answering of the Divisional Secretariats

No	Divisional Secretariats	Date of sent internal audit query	Date of received answers
01	Galewela	06/02/2013	26/02/21
02	Ukuwela	18/02/2013	27/05/2013
03	Yatawatta	22/02/2013	13/03/2013
04	Wilgamuwa	27/02/2013	25/07/2013
05	Pallepola	18/03/2013	11/04/2013
06	Naula	20/03/2013	08/05/2013
07	Dambulla	22/04/2013	29/07/2013
08	Laggala	03/05/2013	21/06/2013
09	Matale	10/05/2013	05/08/2013
10	Ambanganga Korale	14/05/2013	26/06/2013
11	Galewela	05/06/2013	05/08/2013
12	Rattota	05/06/2013	02/08/2013
13	Ukuwela	12/08/2013	25/11/2013
14	Yatawatta	17/07/2013	23/08/2013
15	Laggala	14/10/2013	
16	Pallepola	08/11/2013	11/12/2013
17	Wilgamuwa	22/11/2013	01/01/2014
18	Dambulla	09/12/2013	30/12/2013

### Audited institutes – All divisional secretariats of Matale district

No	Divisional Secretariats	Date of held internal audit query
01	Galewela	10/01/2013-16
02	Ukuwela	21/01/2013-24
03	Yatawatta	11/02/2013--14
04	Wilgamuwa	11/02/2013-14

05	Pallepola	11/03/2013--14
06	Naula	11/03/2013-14
07	Dambulla	02/04/2013-05
08	Laggala	22/04/2013-26
09	Matale	28/05/2013-31
10	Ambanganga korale	09/06/2013-09
11	Galewela	25/06/2013-28
12	Rattota	25/06/2013-28
13	Ukuwela	05/08/2013-07
14	Yatawatta	08/07/2013-11
15	Laggala	07/10/2013-10
16	Pallepola	28/10/2013-30
17	Wilgamuwa	11/11/2013-14
18	Dambulla	02/12/2013-04

#### Coordinating the audit queries issued by government audit section

No	Divisional Secretariats	No of audit inquires	Received date of audit queries	Date of sent to the D/S	Date of received the answers	Date of sent to the auditing general
01	District Secretariat	01	08/07/2013	30/08/2013	02/10/2013	02/10/2013
02	District secretariat	01	30/07/2013	07/30/2013	27/11/2013	28/11/2013
03	Matale	14	27/12/2013	31/12/2013	30/01/2013 19/02/2013 29/05/2013 11/09/2013	31/01/2013 22/02/2013 25/09/2013
04	Ukuwela	14	08/05/2013	09/05/2013	05/07/2013	15/07/2013
05	Yatawatta	16	25/03/2013	27/03/2013	08/04/2013 16/04/2013 25/09/2013	08/04/2013 16/04/2013 25/09/2013
06	Pallepola	12	09/04/2013	10/04/2013	21/05/2013	22/05/2013
07	Galewela	08	27/02/2013	05/03/2013	22/03/2013	28/03/2013
08	Galewela	06	06/03/2013	15/03/2013	22/03/2013	28/03/2013
09	Galewela	05	14/03/2013	15/03/2013	10/05/2013	13/05/2013
10	Dambulla	07	01/04/2013	09/04/2013	08/05/2013	09/05/2013
11	Naula	05	15/02/2013	19/02/2013	07/03/2013 21/02/2013	18/03/2013 22/02/2013

					11/04/2013 15/07/2013	16/04/2013 15/07/2013
<b>12</b>	Rattota	17	10/05/2013	13/04/2013	22/06/2013	27/05/2013
<b>13</b>	Ambanganga korale	15	09/04/2013	10/04/2013	22/05/2013	27/05/2013
<b>14</b>	Wilgamuwa	21	14/08/2013	14/08/2013	02/09/2013	04/09/2013

**Information of paid vouchers-2013**

No	Divisional Secretariats	No of vouchers handed over by D/S	No of vouchers handed over to the government audit section	Inspecting the vouchers (percentage)
01	District Secretariat	January/November	January/ October	91%
02	Matale	January/ October	January/August	80%
03	Yatawatta	January/November	January/September	81%
04	Ukuwela	January/July	January/ July	100%
05	Rattota	January/ October	January/ October	100%
06	Ambangaga	January/September	January/ July	77%
07	Naula	January/ July	January/May	71%
08	Dambulla	January/September	January/May	55%
09	Galewela	January/ October	January/August	80%
10	Pallepola	January/August	January/May	62%
11	Wilgamuwa	January/ October	January/August	80%
12	Laggala	January/September	January/ June	67%

Salary expenditure for auditing staff-

Rs.1680000.00

Traveling allowances for auditing staff--

Rs. 120000.00

Special investigations and disciplinary inquiries -2013

- ❖ Preliminary investigation regarding the window's locks of District Secretariat.

- ❖ The investigation of giving compensation for chilly cultivation of Naula Divisional Secretary Division
- ❖ Preliminary investigation regarding a missing computer of the District Secretariat.
- ❖ Inquiring the big Onion store was contracted of Dambulla Divisional Secretary Division on loan donation.
- ❖ Inquiring the big onion store was contracted of Naula Divisional Secretary Division on loan donation.
- ❖ Inquiring the assets of ‘Samurdhi maha Sangamaya’ and ‘ Samurdhi bank Societies’
- ❖ Soya beans cultivation programme- Submitted the report after inquiring the reasons of not success Soya beans seeds.
- ❖ Holding investigation regarding the damage of the rice seeds of Tenna rice seeds store

### **Participated disciplinary inquires in 2013**

Chief secretariat office in North West - disciplinary inquires regarding Technical officer

### **Disciplinary management committees was held in 2013**

Divisional secretariat, Wilgamuwa- 01/02/2013

Divisional secretariat, Ambanganga- 27/06/2013

District secretariat, Matale-10/12/2013

## 07. Agricultural Development

### ❖ Implemented Development Programmes

No	Project	Allocated Amount (Rs)	Actual Expenditure( Rs)	Physical progress %	No. Of beneficiaries
01	Additional food Cultivation Programme-chilly	1.36	1.12	91.50%	5410
02	Additional food Cultivation Programme-cashew-nuts production	0.83	0.79	100%	125
03	Purchasing seeds for soya beans cultivation programme	1.03	0.34	100%	148
04	Empowering programme to use and product carbonic fertilize.	6.99	0.36	100%	3500
05	Big onion seeds production programme-to build protection huts	8.90	8.64	100%	144
06	Youth agro entrepreneur programme	0.03	0.03	100%	30
07	Commercial farm programme	10.30	2.72	33.33%	10
08	Implementation the tasks of the fertilize regulation act	0.13	0.03	93%	200
	Total	<b>29.57</b>	<b>14.0</b>	-	<b>6567</b>

### ❖ Photos of agricultural activities





## 08. Social Development & Economical Development

### 9.1 Divi Neguma Programme – One Million Household Unit Development Programme

#### ❖ Provisions for Divi Naguma Programme

No	Programme	Total Provision amount (Rs)	Expenditure
01	Awareness programmes for eradicate the poverty	1166000.00	1165000.00
02	Providing store facilities for big onion	1000000.00	880000.00
03	Clearing the bills of Divi Naguma	1052000.00	10518107.00
04	Distributed the coconut plants under the Divi Naguma programme	1467862.00	1467862.00
05	Industrial programme (Ministry of science and technology)	1370000.00	1256578.88
06	Clearing the bills of Divi Naguma ( saurdhi)	4926749.00	4920903.00
07	Providing Fruits and other crops plants(minor crops plants)	5950000.00	5800255.00
08	Transport the seeds packets under the 5 <sup>th</sup> stage	100000.00	70000.00
09	Production the big onion seeds	2134160.00	1960766.60
10	Printing the family research forms	130800.00	100000.00
11	For coconuts plants	1003650.00	1003650.00
12	Transport minor crops plants	200000.00	150000.00
13	Budded cashew plants	1332000.00	1312000.00
14	Industrial programme (Arthur C. Clark center)	78750.00	56250.00
15	Providing self service instrument (Ukuwela)	18738.00	56250.00
16	Divi Neguma management expenditure	400000.00	400000.00
17	Special programme for low income families	6000000.00	5549575.50
18	Cashew plant and coconut plant transport	450000.00	397250.00

19	For coconut plants	453000.00	447375.00
20	For coconut plants	2753775.00	2244375.00
21	Bud cashew plants	850000.00	850000.00
22	Big onion seeds-Laggala	170000.00	170000.00
	<b>total</b>	<b>51475484.00</b>	<b>48658685.98</b>

❖ **Input provided for Agricultural activities**

Serial No	D.S Division	No of seed packets	No of fruit plants			No of coconut plant		No of cashew plants	Minor export crops
			Plants for aurudu nekatha	Development programmes for primary schools	Divi Neguma 5 <sup>th</sup> stage				
01	Matale	5200	4705	25	6550	37	3580	160	7000
02	Yatawatta	5600	5250	250	7465	172	3150	500	10500
03	Ukuwela	7300	5000	1300	10003	1000	4610		11100
04	Rattota	5400	1840	350	6095	251	3810	3400	9000
05	Dabulla	5900	1500	800	8609	1000	3320	1000	
06	Galewela	5900	7549	300	8238	1000	3941		1000
07	Pillepola	4400	6178	650	6098	1000	8777	1500	13000
08	Naula	5200	5050	350	7273	1000	3750		4000
09	Abanganga korale	2000	2396	600	2653	877	1490		2750
10	Laggala	3700	743	350	4715	416	2639		1000
11	Wilgamuwa	3900	15348	300	5401	758	2785		1000
	DPS				174				1000
	<b>Total</b>	<b>54500</b>	<b>71895</b>	<b>5225</b>	<b>73274</b>	<b>7511</b>	<b>35890</b>	<b>6560</b>	<b>60350</b>

❖ **Providing equipment and raw material for industrial under the Divi Neguma programme**

No	D.S Divisions	Ministry of Sciences and Technology		No of beneficiaries	Expenditure( Rs)
		No of projects	provisions		
01	Matale	40	400000.00	40	389390.88
02	Yatawathta	03	30000.00	03	29719.000
03	Ukuwela	21	20000.00	21	199137.50
04	Rattota	22	220000.00	30	218067.50
05	Dambulla	05	50000.00	05	49689.00
06	Galewela	20	200000.00	16	154785.00
07	Pallepola	09	90000.00	09	90000.00
08	Naula	10	100000.00	09	66790.00
09	Ambanganga	04	40000.00	03	29000.00
10	Laggala	03	30000.00	03	30000.00
	<b>Total</b>	<b>137</b>	<b>1370000.00</b>	<b>139</b>	<b>1256578.88</b>

**9.4 Development projects Based on the provisions of ministry of economics development  
Progress as at 31. 12. 2013**

No	programmes	Expenditure (Rs)	Balance provisions	No of projects	Physical progress
01	Kandurata Udanaya development programme	68797261.80	1202738.20	324	98%
02	Rehabilitation activates of Minipe 1st and 4 <sup>th</sup> stage rivers –clearing of the bills	18869548.94	130451.06	3	100%
03	Livelihood development programmes of Samurdhi Authority similar to r Divi Naguma programme	4920903	5845	106	100%
04	Purchasing office equipment for development officers who attached for G.S office by Ministry of economic development.	10717473.41	182526.59	545	100%
05	Renovation work of Kaudagammana	6270705.13	150544.84	1	100%

	yayawatta bridge base on provisions of the Ministry of economic development.				
06	Diriya Piyasa Housing development programme Implementing on the provisions of Ministry of economic development	160000.00	0	31	100%
07	Apiculture , mushroom cultivation , poly tunnel cultivation implementing by the provisions of the Ministry of Economic development	510900.00	0	28	100%
08	Providing store facilities for big onion , implementing by the provisions of the Ministry of Economic development	8800000.00	1200000.00	88	88%
09	5000 schools reconstructions programme	55000000.00	-	111	-
10	Constructions works of pakkiyam school's building	61000000.00	-	01	Finished up to foundation

### 9.7 Provincial road carpeting programme

- ❖ Number
- ❖ of developing roads -28
- ❖ Provided provisions by Ministry of Economic Development to Implement the programme in 2013 -Rs 365 millions

#### Finance and Physical progress as at 31-12-2013

- Total extend of laid enfolder -97.60 kg
- Total extend of laid ABC -16.75 kg
- Total extend of ready to lay asphalt -14.47 kg
- Paid advance payment for estate Engineering cooperation -Rs.230.51 millions
- Paid administration expenditure for investigation institutions in 2013 -3.78 millions

### Social development

#### 9.8 social service programme

No	Programme/ donation	Programme/ n o of beneficiaries	Expenditure	Finance sourer
01	Community disable programme – (C.B.R.)	-	391209.60	Ministry of social service

02	Granting Rs.3000/= jeevanopaya for disables	550	19800000.00	Chief ministry of disables
03	Housing programme for disables	07	1100000.00	Department of social service
04	Self service granting for disables	48	733925.00	Department of social service
05	Allocating entrance for disables	08	100376.00	Ministry of social service
06	Granting Rs. 1000/= for elders up 70 years	5548	66173200.00	Elders secretary
	<b>Total</b>	<b>6161</b>	<b>88298710.00</b>	-

### 9.9 Social security board

No	Recruitment			Issued receipt books in 2013	Issued deeds in 2013	Inspection for pension	Inspection for creativity	Awareness programme
	End of last year	Collecting in the year	Accumulated collection					
Galewela	203	-	203	190	175	04	01	-
Dambulla	1837	-	1837	1825	1750	13		-
Naula	427	-	427	424	400	02		-
Pallepola	622	02	624	604	535	09		-
Yatawatta	756	02	758	737	710	04		-
Matale	470	-	470	450	420	07		-
Ambanganga korale	94	01	95	87	75	-		-
Laggala	119	-	119	100	85	-		-
Wilgamuwa	490	-	490	480	450	-		-
Rattota	336	-	336	325	315	07		-
Ukuwela	1034	04	1038	929	825	10		-
Direct recruitment	05	10	15	20	-	06		
<b>total</b>	<b>6393</b>	<b>19</b>	<b>6412</b>	<b>6166</b>	<b>5730</b>	<b>62</b>	<b>01</b>	-

## 9.10 District child protection

No	Programme	No of programmes	No of beneficiaries	Expenditure	Other facts
01	Awareness programme regarding child protection-Matale zone	11	6 5		<ul style="list-style-type: none"> <li>❖ Sujatha girl's school</li> <li>❖ Aluvihare vidyalaya</li> <li>❖ Sirimavo andaranayaka Model primary school</li> <li>❖ Sirimavo Bandaranayaka Vidyalaya</li> <li>❖ Vijaya college</li> <li>❖ Vijayapala collage</li> <li>❖ Buddha Gosha vidyalaya</li> <li>❖ Madawala maha vidyalaya</li> <li>❖ Sangamitta gril's school</li> <li>❖ Christchurch collage</li> </ul>
02	Awareness programme for parents 'to strength our butterfly's hands	03	150	1500.00	Kuriwela maha viddhyalaya District secretariat District secretariat
03	Held a meeting for committee members of the district 'to strength rural committee frame	03	45	21000.00	
04	Participated committee members and children for three days work shop to preparer national policy for strength rural committee frame	01	06		
05	Drawing art by children of Kohombiliwela orphan house (200m length)	01		73612.50	
06	Holding progress meeting of child right promotion's officers	06	60	5000.00	
07	Up dating the district child board, holding a meeting and awareness programme for children regarding the leader ship	01	60	19735.00	
08	Exchanging the experiences between the district child board and Wilgamuwa divisional child board and trip to wasgamuwa national park	01	200	19920.00	Rs. 50000.00 has expended by world vision company

09	Awareness programmes were held on 7 <sup>th</sup> schools under the schools protection programme	07	700	49000.00	<ul style="list-style-type: none"> <li>❖ Kolobugolla maha Vidyalaya</li> <li>❖ Kaduwela Vidyalaya</li> <li>❖ Vijaya Collage</li> <li>❖ Vijayapala Collage</li> <li>❖ Aluvihare Vidyalaya</li> <li>❖ Maningamuwa maha Vidyalaya</li> <li>❖ Rattota Parakkrama Vidyalaya</li> </ul>
10	Participated the children of district child board for the programme of 'Iuru ya karathi daruvo' was held for exchanging the experiences of the children of child boards	01	03	-	-
11	Participated the children of district child board for world child day national programme was held at Nelum pokuna theater	01	06	15000.00	
12	District drama competition was held among the child board	01	200	5000.00	-
13	Supplying council ling service to held awareness programme regarding child protection and prevent the child abuse	25	5000	-	The Programmes were organized by divisional secretariat and communities, deferent organizations and deferent institutes
14	Investigating the orphan houses and the children were participated for deferent programme	10	130	-	-
15	To take necessary actions for receiving complaints to the divisional secretariat regarding child abuse	05	-	-	-
16	A house is being constructed in Matale division in similar to world child day	01	-	-	-

#### 9.10 District child protection (national child protection authority)

No	Programme	No of programmes	No of beneficiaries	Expenditure
01	Awareness programmes for school children	07	1479	-
02	Training programmes for school teachers about the child protection	16	690 teachers	-

03	Established school child protection committee	80 committees	All children, teachers and parents in relevant schools	-
04	Tanning programmes for schools teaching instructors	01	117 teachers	34320.00
05	Inspecting orphan houses	05	207 children and management staff	36000.00
06	1926 child abuse complaints	Integrated for 116 complaints	116 child and relevant families	-
07	Awareness programmes for community regarding child protection	08	394	-
08	Awareness programmes for state community regarding child protection	12	396	23000.00
09	Awareness programme for new graduates regarding child protection	04	156 officers	3000.00
10	Awareness programme for new pregnant mothers public mid wives regarding child protection	07	335	32000.00
11	Awareness programme for health officers regarding child protection	01	-	28209.00
12	Awareness programme for public officers regarding child protection	01	89	-
13	World child day programme	01	360	-

### 9.17 Early childhood development

Implemented programme without ministries provisions

No	programmes	Date of held	place	No of beneficiaries
01	Awareness programme for pre-schools teachers	03/01/2013	Aigithi pre-school -Galwdukubura	14 parents
02	Awareness programme for pregnant mothers	22/02/2013	M/C clinic	14 parents
03	Awareness programme for pregnant mothers	28/02/2013	White parse pre-school	21 parents
04	Awareness programme for pregnant mothers	13/03/2013	Thamagawa clinic	20 parents
05	Awareness programme for pregnant mothers	22/03/2013	Molanda pitiya clinic	15 parents
06	Awareness programme for pregnant mothers	06/05/2013	Dolapara clinic	16 parents
07	Awareness programme for pregnant mothers	18/02/1013	Boran hall	40 parents
08	Awareness programme for pregnant mothers	18/06/2013	Kids corner pre-school	35 parents
09	Skill development	12/08/2013	Yatawatta pradeshiya subba	22 pre-schools teachers

No	Date	programme	place	No of beneficiaries	Amount of provisions
01	16/07/213	Pre-school's teachers tanning programme	District Secretariat	75 Pre-school's teachers	25000.00
02	29/07/2013	Pre-school's teachers tanning programme	Economic Center - Dambulla	75 Pre-school's teachers	25000.00
03	06/08/2013	Awareness programme for pre- school's parents	Kawamura pre-school	75 Pre-school's teachers	25000.00
04	22/11/2013	Awareness programme for pre- school's parents	Rathgammana clinic	75 Pre-school's parents	25000.00
05	20/12/2013	Early childhood development week Art programme for children	Dorakumbura pre-school	Pre-school's children	15000.00
	Total				115,000.00

### 9.16 Non Government organization

#### ❖ Registration

New registrations	No of names changers	No of canceled	Others
01	-	-	-

#### ❖ Investigations the inquiries about the non government organizations

Divisional Secretary of Dambulla has informed in oral, to inspect the programmes of 'Lama Aruna Organization' implementing in Dambulla Divisional secretariat and it is decided that prior inspection to be held from 23/24.01.2014.

#### ❖ Awareness programme to be held for public offices though non government organization

In this regard relevant non government organizations have informed and It is being decided necessary annual plans

#### ❖ Providing details about the non government organization

Request has been sent by the opposition leader of central provincial council Mr. Ranjith Aluvihare regarding this matter and detail has been submitted.

### 9.17 Ranaviru programme (Progress)

- ❖ Balance amount of divisional secretariats has been refunded to the Ministry of Administration and home affairs, after conclusion of coordinating activates of the preparing the Ranaviru data base
- ❖ Collected amount of selling ranaviru flags has been handed over to the Governor's office of central province

### 9.18 woman's improvement

No	Programme/ activates	Allocated amount	Actual expenditure	Physical progress	No of beneficiaries
01	Tanning programme to strength woman's committee and woman's organizations	34800.00	33200.00		68
02	District accounts training programme (2 days)	24250.00	24250.00		40
03	District productions fair and exhibition( 2 days)	100000.00	99050		62

### Religious and spiritual programmes

- 73 'pirikara' were offered for 'Pindapatha Charikawa' was held on 13<sup>th</sup> may by coordinate of district 'Bala Mandalaya'
- 'Poson Sau Dansala' was organized by Kirigalpotta woman's society for poson full moon poya day.
- Offered alms giving programme and presences for the children of special education tanning school at Kaikawela, Matale.

#### ❖ Awareness programmes for state community

- Organizing the awareness programmes for state school at Kandenuwara, Rattota.(4<sup>th</sup> may)
- Given cooperation for awareness proarammes was held for state women and well fair officers at Yatawatta MOH division
- Organizing and cooperating the awareness programme for state women at Nalanda state.
- Cooperating the awareness programme was held for Ukuwela state schools.

#### ❖ Home garden cultivation progammes

- Cooperating the home garden programme at Ambanganga and providing necessary equipment for cultivation.
- Cooperating the home garden programme at Dambulla and providing necessary equipment for selected home gardens.

#### ❖ Cooperating to held deferent programmes for women society.

- Holding food technology training programme Kirigalpotta women society.
- Opening serving accounts for Kirigalpotta women society with coordinate of Bank of Ceylon, similar to world women day.
- Awareness programme was held for Ranliya women society at Dostarawatta regarding child abuse with cooperating child and women section of HQI office.

#### ❖ Organizing and coordinating the different programmes of devisional secretariats.

- Loan activates-Matale /Dambulla
- Artificial jewelry tanning programme -Pallepola
- Curtain tanning programme -Rattota/Matale
- Sewing training programme-Matale
- Selling fair programme -Aula
- Home garden programme -Ambangaga/ Dambulla
- Beauty culture programme -Matale
- Bridle show programme -Matale
- Milk cows home project -Gallewela

## ❖ **Special activates**

- The child placed under probation who lived with his mother named Muttukarupan Jevitthri in a public toilet.
  - ❖ Preparing the programmes for divisional secretariat divisions
- Holding a work shop to preparer bites packets as self employment programme for the members of Laggala divisional secretariat division's women society, cooperating with BOC Matale branch and technical development board.
  - ❖ Data collecting
- Widows of Matale district
- Registered women societies of Matale district
- Selected 10 women entrepreneurs from one divisional secretariat
  - ❖ Others
- District 'Bala Mandala' meetings and awareness programme
- Participating for women 'Bala Mandala'
- Participating women societies, and awareness programme
- Participating world women day functions
- Participating for societies election of office and reorganizing activates to establish the societies

## 09. Planning and Progress Control

### 10.2 District Decentralized Budget Programme - 2012

No	D.S. Division	No of Total Projects	Completed project (100% Progress)	No of beneficiaries	Expenditure
01	Matale	78	70	20.158	4477.906.10
02	Yatawatta	85	85	15149	3693052.94
03	Ukuwela	52	52	18001	2619616.50
04	Rattota	55	55	11246	2544064.28
05	Pallepola	43	43	8618	2089498.37
06	Galewela	70	70	4139	2089498.37
07	Dambulla	66	66	24807	2731249.29
08	Naula	33	33	8998	1077892.56
09	Ambanganga	27	27	5400	1445162.53
10	Laggala	14	13	4130	453637.14
11	Wilgamuwa	37	37	12232	1539292.00
<b>Total</b>		<b>581</b>	<b>577</b>	<b>133,080</b>	<b>26,461,701.62</b>

### 10.3. District Coordinating Committee:

There were 07 committee meetings have been held at 2013 and when expending funds, the committee tried to plan and direct programmes where establishing the well balanced development throughout the district. At development process the progress control activities and connected issues have been submitted to the committee after studying, as well as the committee have been tried to give development and administrative solutions when concerning on said matters.

The honorable ministers, parliamentarians, line ministries, corporations and boards, banks, NGO and the ministries of provincial council had been given full backup to the district coordinating committee meeting, to success development process and the targets. As well as it was best guide ling to the relevant officers to direct and manage development structure in properly.

### 10.4 Price Committee Meetings

There were 02 meetings were held within the year 2013. The fixed prices had confirmed by that meeting were distributed to the relevant parties and it would be helpful to achieve district development targets with quality and efficiently.

### 10.5 District Dengue prevent committee

Six meetings were held with in this year to take and coordinate the important decisions to eradicate the dengue from the district.

**10.6 Donation programme of the members of provincial council.**

No	Divisional secretariat divisions	Donation programme of the member of provincial council.	
		No of projects	expenditure
01	Matale	66	1789718.58
02	Yatawatta	20	418635.00
03	Naula	29	757644.20
04	Ambanganga	20	469130.00
05	Galewela	83	1950694.85
06	Rattota	64	1414088.10
07	Ukuwela	92	2140833.77
08	Laggala	16	230000.00
09	Wilgamuwa	55	2000873.00
10	Pallepola	54	11123575.00
11	Dambulla	86	2411450.00
	<b>Total</b>	<b>585</b>	<b>24,706,642.50</b>

## 10. Granting Various Permits/ License and Solving Connected Legal Issues

### 11.1 Issuing gun License and Explosive License

01. Issued explosive permits in 2013	-	71
02. No of explosive applications	-	212
03. Renewed gun license in 2013	-	1497
04. No of gun license for recommendation (Protecting plantations/Animal husbandry)	}	18

### 11.2 Details of approved trees on falling Jack/Bread Fruit Trees - 2013

No	Divisional Secretariat	No of permits	No of Trees
01.	Matale	446	617
02.	Ukuwela	436	577
03.	Rattota	92	125
04.	Ambanganga Korale	186	278
05.	Naula	96	128
06.	Dambulla	90	33
07.	Galewela	104	146
08.	Yatawatta	285	385
09.	Pallepola	232	326
10.	Laggala	38	123
11.	Wilgamuwa	-	-
	Total		

## 11. Religious Affairs and Spiritual Development

### Cultural Progress:-

No	Completed Tasks	Progress (Physical/Finance)	Special Remarks
01	Holding annual "Seth Pirith Sajjayanaya" at office premises at the beginning of year 2013		Coordinated under the guidance of District Secretary
02	Holding annual Theru Festival in Muthumari Amman Kovil, Matale, from 24 <sup>th</sup> and 25 <sup>th</sup> February 2013		Organized under the direction of the District Secretary
03	Inspecting eligibility for granting provisions to Kalayathana, forwarding approval report to the Director of Cultural Affairs and collecting information of kalayathana from divisional secretaries	Providing donations for active kalayathana	
04	Awareness programme of Divisional literature competition for Divisional Secretariats and contribution of gifts and certificates . Organizing Folk songs competitions, holding District competitions.	Financial assistance by Department of Cultural Affairs and coordination by divisional secretaries.	
05	Provisions of 1.3 million has been provided by Christian Religious Affaires Department in April 2013 to develop residential facilities of devotees participate annual "Holy" festival in Wahakotte Church		Coordinated under the guidance of District Secretary, constructed under the inspection of the District Engineer.
06	The application for "Kala Bhushana" award 2013 forwarded to Divisional Secretariats and approved artist referred to the Director of cultural affairs	07 artists has been awarded by "Kala Bhushana" award in this year.	Conducted by divisional secretaries. financial assistance given by Department of Cultural Affairs
07	Holding District dancing programme for about 600 students and teachers including a special dancing lecture of dancer Dr. Liyonal Benthara in 2013.05.31.	All expenditure by Department of Cultural Affairs	Organized under the direction of the District Secretary
08	Organizing and participating for the annual "Holy" festival in Wahakotte Church in 15 <sup>th</sup> & 16 <sup>th</sup> June		Coordinated by father of in charge in the chapter under the guidance of District Secretary, sponsored by Ministry of Christian Affairs
09	Medical & sociological Awareness programme for pregnant mothers regarding protection of their pregnancy, mental balance ,family environment	Sponsored by donors	District Secretary/ assistant director of cultural affairs
10	Awareness programme providing knowledge on preparing local foods practiced by ancient Sri Lankans and making arrangement to provide a special diet for 52 artists on 30 <sup>th</sup> July 2013	Central Province Department of Cultural Affairs	Assistant Director of cultural affairs
11	Holding District Children Art Competition of State Children Art Competition in 07 <sup>th</sup> July	Certificates have been provided by the	Organized under the guidance of District Secretary

	2013 at M/Aluvihare Maha Vidyalaya	Department of Cultural Affairs	
12	Organizing and providing necessary assistance for annual “Asela Perahara” in Bambawa Raja Maha Vihara.		Done under the guidance of District Secretary with the cooperation of Divisional Secretary and other Government Servants
13	Holding Inter Kalayathana Competition – Matale at Cultural Centre – Matale in 2013.09.17. Certificates and memorials have been provided for winners	Rs.40.000 provisions has been provided by the	Organized under the guidance of District Secretary
14	Holding District Annual Literature Festival-2013 on Sep 25 at Hotel school auditorium. 450 school students participated to the speech of Mr Wasantha Herath ,Zonal Coordinator of State Security, Disaster Management and Peace Education of north-western Provincial Education Department.	Rs 25000.00 provisions allocated by Department of Cultural Affairs . Certificates and gifts were distributed among the winners. Provisions was not sufficient and Rs.22500/= sponsored by state Banks in Matale District.	Organized under the guidance of District Secretary
15	Organizing collection of data for Matale district project on cultural heritages until not identified and forwarding data for the conservation to the Ministry of Cultural and artistic affairs.	The total expenditure for this project is Rs.629375.00 and provided by the ministry of Cultural and artistic affairs.	Organized and coordinated under the guidance of District Secretary
16	Eight Thousand Hundred Rupees has been allocated by the Hindu religious and cultural Affairs department for the development of 08 Hindu religious places and One Thousand Hundred Rupees has been given for each kovil.	Eight Thousand Hundred Rupees has been allocated for the development of kovil	Donations has been provided for kovil in relevant Divisional Secretary’s Divisions according to the instructions of the District Secretary.
17	Rs. Thirteen thousands hundreds and Thirteen thousand (1313030/=) has been allocated for the receiving raw materials for the construction of 10 stalls in Ukuwela Divisional Secretary’s division by the ministry of cultural affairs under development of ancient craft villages according to the Budget proposals of 2012.	Rs. Thirteen thousands hundreds and Thirteen thousand (1313030/=) has been allocated for the receiving raw materials for the construction of 10 stalls	This allocation has been sanded to the Divisional Secretary – Ukuwela and this project has been completed under his inspection of.

### 12.1 Buddhist Affaires Coordination

No.	Activity	Progress (Physical/ Financial)	Special details
01	Pirith chanting for the staff of the District Secretariat on 02 <sup>nd</sup> January 2013		With the coordination of the welfare Society of the District Secretariat
02	Holding Daham Sarasaviya programme of Sri Jayawardanapura University (Daham Teaching Diploma Course) in Sri Sumangala Maha Vidyalaya – Kandy on 2013.04/05/06		Organized according to the assistance of the Buddhist affaires Commissioners and the District Secretary
03	Holding Dhamma Gaweshi Television Programme(Writing)at M/Christ Church National School on 2013.01.05		Organized according to the assistance of the Buddhist affaires Commissioners and the District Secretary
04	Sending applications(Teachers/Students) relevant	Rs.34,500.00	Organized according to the

	to details of Dhamma Schools 2013 for Divisional Secretary's Divisions		assistance of the Buddhist affairs Commissioners and the District Secretary
05	Commencing Lectures relevant to Pali Languages Promoting Course organized by Buddhist affairs Department on 2013.03.02	Rs.75630.00	Organized according to the assistance of the Buddhist affairs Commissioners and the District Secretary
06	Holding Pali Languages Promoting examination organized by Buddhist affairs Department on 2013.12.21	Rs.1630.00	Organized according to the assistance of the Buddhist affairs Commissioners and the District Secretary
07	Holding All Island Dhamma School Students' Essay Competition for the Commemoration of 260 <sup>th</sup> year of Shayamopali Chapter on 2013.04.28.		Organized according to the assistance of the Buddhist affairs Commissioners and the District Secretary
08	Holding Wesak Lantern Competition		Organized according to assistance of the District Secretary
09	Holding Alms- gathering Programme for celebrating 260 <sup>th</sup> year of Shayamopali Chapter on 2013.05.03		Organized according to assistance of the District Secretary
10	Providing donations for passing away of Buddhist Monks	Rs.102500.00	By Buddhist Affairs Department
11	Jayapirith Chanting – Bandaranayaka Memorial International Conference Hall – 2013 Sending 100 Buddhist Monks from Matale District for this Programme	Rs.39665.00	Organized according to assistance of the District Secretary
12	Daham Sarasaviyya Diploma Course 2013 Commencing activities of Sri Lanka Buddhist & Pali- 2013 at Dharmaraja Piriwena, Matale on 2013.08.06	Rs.73,250.00	Organized according to the assistance of the Buddhist affairs Commissioners and the District Secretary
13	Holding Pirith Chanting & Puja blessing Hon. President, to the Government at Aluvihare , Matale on 2013.11.13		
4	Making arrangements to bring Buddhist monks for alms giving in Anuradahapura-2013.11.24 held in order to bless for Hon. President, Government and peoples.		Organized according to the assistance of the Buddhist affairs Commissioners and the District Secretary
15	Distribution of Uniform for 2157 Dhamma School's Teachers		By the Buddhist Affairs Department
16	Providing Library allowances for 2503 Dhamma School's Teachers	Rs. 5296600.00	By the Buddhist Affairs Department
17	Holding Dhamma School Teachers' Certificate Examination 2013 on 2013.07.30 (Christ Church National College)	Rs.8050.00	Organized according to the assistance of the Buddhist affairs Commissioners and the District Secretary
18	Holding Bosath Dhampal Harasara on 2013.09.17 (commemoration of 149 Birth day of Hon.Anagarika Dharmapala)	Rs.34500.00	By the Buddhist Affairs Department
19	Holding examination on World Peace & Social ethics organized by the Buddhist Affairs Department with collaboration of Dhammakaya Organization 2013.10.20		Organized according to the assistance of the Buddhist affairs Commissioners and the District Secretary
20	Providing donation for the development of temples.	Rs.375000.00	By the Buddhist Affairs Department
21	Providing donation for the temples in remote areas.	Rs.350000.00	By the Buddhist Affairs Department
22	Providing instrument for Dhamma Schools	Rs.300000.00	By the Buddhist Affairs Department
23	Holding Dhamma Schools Grades Examination on 2013.11.27	Rs.102500.00	By Buddhist Affairs Department

24	Providing official instrument	Rs.29000.00	By Buddhist Affaires Department
25	Providing instruments for Sasarakshaka Boards	Rs.100000.00	By Buddhist Affaires Department
26	Organizing Students' cleverness(Sisu nipunatha)programme in 11 Divisional Secretary's Divitions		Organized according to the assistance of the Buddhist affaires Commissioners and the District Secretary
27	Holding District Students' cleverness(Sisu nipunatha)		Organized according to the assistance of the Buddhist affaires Commissioners and the District Secretary
28	Providing Building donation for Dhamma Schools	Rs. 1,800.000.00	By Buddhist Affaires Department
29	Providing donations for Sanganayaka Posts	Rs.25000.00	By the Buddhist Affaires Department
30	Transporting Dasa Sil Mothas to Anuradhapura	Rs.12000.00	By the Buddhist Affaires Department
31	Making arrangements to participate 40 students for All Island Students' cleverness (Sisu nipunatha)programme in Kegall Vidyalaya	Rs.58580.00	By the Buddhist Affaires Department

## 12. Environment Protection

### District Environmental Protection Programmes

No	Completed Tasks in 2013	Progress		Special remarks
		Physical %	Financial (Rs.)	
01	Holding district environment law implementing committee under the guidance of District Secretary	90	50000.00	Priority is given to solve regional environmental issues
02	Environment pioneers programme, teachers training, awareness, and coordinating medal festivals	85	5,00,000	coordinating regional level programmes
03	Implementing “Deyata Sewana Ruk Ropana” Programme	80	25,00,000	Regional level Coordinating with Ministry of Environment
04	Holding a campaign for world Bamboo tree day in Pallepola Divisional Secretary’s division	70	100,000	Divisional Secretary’s divisions level Coordination
05	Issuing environment license and industry inspections, industrial feedback	60	10,00	Environment license issued by C.E.A..
06	Holding World Environment day -2013 Matale district programme in St/ Thomas National College	75	80000	Medal festivals for Environmental leaders students and holding a serious Special lectures
07	Holding special days programs and coordination of this activity	60	10,000	Ex – World Wetlands day, International Ozone day

## 13. Services of the other Public Institutes

### 13.1 Empowering of poor community

#### Samurdhi Programme

#### ❖ Infrastructure Development and Income Generation

No	D.S. Division	Gam Pubudu Programme		Constructing Bank Society buildings programme	
		No of projects	Expenditure (Rs)	No of projects	Expenditure (Rs)
01	Matale	-	-	4	2023851.00
02	Ukuwela	-	-	7	3534431.00
03	Rattota	-	-	3	2052280.00
04	Ambanganga	-	-	2	261988.00
05	Naula			2	334000.00
06	Dambulla	-	-	4	3630340.00
07	Yatawatta	-	-	3	1560198.54
08	Pallepola			2	2803821.00
09	Galewela	-	-	4	1536703.00
10	Laggala			2	521622.32
11	Wilgamuwa				
	<b>Total</b>	-	-	33	18259234.86

No	D.S. Division	Diriya Piyasa Progrmme		Economic Generation	
		No of projects	Expenditure (Rs)	No of projects	Expenditure (Rs)
01	Matale	5	325000	3	120000
02	Ukuwela	17	575000	1	40000
03	Rattota	2	100000		
04	Ambanganga	2	100000	1	40000
05	Naula	8	400000	2	73000
06	Dambulla	4	200000	2	80000
07	Yatawatta	1	100000	2	77320
08	Pallepola	1	100000	2	80000
09	Galewela	2	200000	1	39000
10	Laggala	1	100000	3	60000
11	Wilgamuwa	10	400000		
	<b>Total</b>	<b>53</b>	<b>2600000</b>	<b>17</b>	<b>609320</b>

❖ **Agro and Industrial Projects**

No	D.S. Division	Agro Special Projects		Animal Special Projects		Industrial Special Projects	
		No of projects	Expenditure (Rs)	No of projects	Expenditure (Rs)	No of projects	expenditure(Rs)
01	Matale	5	250000	14	585000	48	1983448
02	Ukuwela	36	1740000	17	795000	75	3116000
03	Rattota	20	725000	19	900000	47	2075000
04	Ambanganga	21	960000	8	400000	33	1580000
05	Naula	76	3148500	14	650000	55	1957000
06	Dambulla	88	1091000	4	175000	54	2088519
07	Yatawatta	18	741000		-	39	176923.50
08	Pallepola	20	920000	32	1485000	70	2413000
09	Galewela	32	1230600	36	1685000	15	615000
10	Laggala	61	9564500	3	140000	57	2310000
11	Wilgamuwa	4	200000	8	350000	18	760000
	Total	381	30390600	178	8250000	547	22361641

❖ **Samurdhi Social Protection Fund – Paying Beneficiaries**

Code No.	Divisional Secretariat	Births		Marriages		Diseases		Deaths		Scholarships	
		Quantity	Amount (Rs)	Quantity	Amount (Rs)	Quantity	Amount (Rs)	Quantity	Amount (Rs)	Quantity	Amount (Rs)
1001	Matale	9	45000	28	132000	48	148000	87	870000	258	258000
1002	Yatawatta	12	60000	89	393000	66	197600	68	680000	356	356000
1003	Pallepola	43	215000	52	236000	80	233000	52	520000	242	242000
1004	Galewela	21	105000	60	274000	50	138400	104	1040000	286	286000
1005	Dambulla	27	135000	71	313000	40	167600	61	610000	776	776000
1006	Naula	18	90000	64	292000	97	264200	62	620000	369	369000
1007	Ambanganga	12	60000	25	111000	46	127000	36	360000	241	210000
1008	Laggala	60	300000	90	416000	108	268400	27	270000	212	210000
1009	Wilgamuwa	62	310000	103	449000	91	233400	57	570000	553	553000
1010	Rattota	49	245000	100	456000	153	426600	129	1290000	274	270500
1011	Ukuwela	9	45000	50	206000	33	101800	60	600000	319	318000
	Total	322	1610000	732	3278000	812	2306000	743	7430000	3886	3848500

**Line Ministry Programmers – 2013 (Central Government)**

❖ **Samurधि beneficiaries Payments**

<b>No</b>	<b>Division</b>	<b>Expenditure (Rs)</b>
01	Matale	31937400
02	Rathtota	36787400
03	Galewela	49980880
04	Naula	25667280
05	Dambulla	24629760
06	Wilgamuwa	48130520
07	Ukuwela	33248880
08	Pallepola	25362840
09	Ambanganga Korale	53940880
10	Laggala	20470840
11	Yatawatta	27788760
	<b>Total</b>	<b>377945440</b>

## 13.2 Entrepreneur Development

### ❖ Small enterprises development section

No	Programme	No of programmes hold		Expenditure (Rs)
		Annual Target	Progress	
01	Awareness Programmes			
	I. General Awareness	18	20	
	II. Special Awareness	02	02	61057.00
	iii. Two days Selections	-	01	11168.00
02	Entrepreneur development programme			
	Skill development programmes			
	Entrepreneur development programmes	5	7	109469.50
03	Management Development programmes			
	i. Management training programmes	03	03	58778.00
	ii Sales training programmes	03	04	61823.00
	iii Accounting training programmes	03	03	47861.00
	iv. Productivity training programmes	01	01	21850.00
	v. Project planning making programmes	03	03	48730.00
	Vi costing training programmes			
04	Technical training Programmes	03	05	129593.00
05	Exporting programmes			
06	Special Projects			
	Sales fair and exhibition	02	02	322671.00
	Youth Entrepreneur development programmes			
	Enterprises consulting programmes	03	03	48784.00
	Feedback programmes	10	14	108198.00
07	Inspecting projects	08	07	79318.67
08	Enterprises society development programmes	03	04	39170.00
	<b>Total</b>			<b>1148471.17</b>

## Completed Other Services

Results	Annual Target	Monthly Progress	Completed as at Dec. 2013
1. Starting new Enterprises	45		98
2. Improving existing businesses	90		227
3. Providing business consulting	15		15
4. Export motivation	-		-
5. Supplying loans	30		67
6. Loans provided			407200.00
Grand Total			407200.00

Pictures relevant to different training programmes & other programmes



## 13.3 District Housing Development

### ❖ National Housing Development Authority

No	D.S.Division	Viru Gammana Programme			Jana Sevana Visiri Programme			Jana Sevana Grama Programme			Jana Sevana Upahara Programme			Jana Sevana Sasunen Sevana Programme		
		Target Housing	Constructed Housing	Expenditure (Rs. 000)	Target Housing	Constructed Housing	Expenditure (Rs. 000)	Target Housing	Constructed	Expenditure (Rs. 000)	Target Housing	Constructed Housing	Expenditure (Rs. 000)	Target Housing	Constructed	Expenditure (Rs. 000)
01	Matale	-	-	-	13	13	1.205	-	-	-	77	77	19.3945	01	01	0.095
02	Ukuwela	-	-	-	16	16	1.310	-	-	-	52	52	11.302	03	03	0.225
03	Rattota	-	-	-	18	18	1.715	-	-	-	63	63	13.157	06	06	0.395
04	Ambangan ga Korale	31	31	4.390	03	03	1.45	-	-	-	14	14	2.252	-	-	-
05	Naula	80	41	6.080	07	07	0.240	-	-	-	31	31	6.505	02	02	0.190
06	Dambulla	09	08	1.000	16	16	1.320	-	-	-	64	64	12.103	03	03	0.160
07	Yatawatta	-	-	-	05	05	0.295	-	-	-	28	28	6.805	-	-	-
08	Pallepola	-	-	-	11	11	0.560	-	-	-	24	24	5.4135	02	02	0.050
09	Galewela	50	50	3.680	09	09	0.670	-	-	-	37	37	6.010	03	03	0.185
10	Laggala	-	-	-	04	04	0.260	-	-	-	02	02	0.550	-	-	-
11	Wilgamuwa	-	-	-	09	09	0.250	-	-	-	13	13	2.706	01	01	0.25
	Total	170	130	-	111	111	-	-	-	-	405	405	-	21	21	-

## 13.4 Recognizing career challenges and guidance

### Career Guidance Section – Ministry of Labourer relationship and Forigion Employment

No	Programme	Annual Tasks			Annual completion		
		Programme	Beneficiaries	allocation	Programme	Beneficiary	allocation
1	Wining professional challenges	4	120	28200.00	4	120	28200.00
2	Motivation to self employments	3			-	-	
3	Teachers awareness Programme	1	30	1250.00	-	-	
4	G. C. E. (O/L)	45	1575		-	-	
5	G. C. E. (A/L)	27	810		-	-	
6	Supplying Carrer Guidance Services	-	2615		-	-	
7	Regional Job fair	8	2400	48000.00	8	-	42000.00
8	District Job fair	1	1000	73500.00	1	750	73210.00
9	Employment Societies	3	90	62100.00	3	97	62100.00
10	Employed in Private Sector	1	75	19200.00	1	92	17640.00
11	Motivation to Free employments	1	30	11460.00	1	31	9700.00
12	Entrepreneurs Development Training	1	30	41000.00	2	60	41100.00
13	Repairing Mobile Phones	1	30	23500.00	-	-	-
14	Training programmes on necessities	5	100	32750.00	5	100	32750.00
15	Gardens Management	1	30	40000.00	1	30	40000.00

❖ **Productivity Promotion**

No	Implemented programme	Date/Dates	Place
01	Implementation Productivity week in District Secretariat	2013.02.15 2013.02.16 2013.02.20 2013.02.21 2013.02.22 2013.02.27 2013.02.28	District Secretariat , Matale
02	Implementation of a Productivity Motivation Programme	2013.03.01	District Secretariat , Matale ,
03	Implementation of a Productivity Motivation Programme	2013.03.12	Youth Ranger- Naula
04	Audit on 5S concept	2013.04.29	District Secretariat , Matale ,
05	Preparation of a book including details on Matale District	2013.07.26	District Secretariat , Matale
06	Implementation of a Productivity Motivation Programme	2013.07.26	Pradeshiya Saba- Matale
07	Implementation of a Productivity Motivation Programme	2013.08.27	Divisional Secretariat, Rattota
08	Community Productivity Motivation Programme	2013.07.26	Pradeshiya Saba- Ambanganga
09	Community Productivity Motivation Programme	2013.07.26	Divisional Secretariat- Yatawatta
10	Productivity Motivation Programme	2013.07.09	Pradeshiya Saba- Naula
11	New Project Programme	2013.07.09	Pradeshiya Saba- Naula
12	Explaining Productivity Concepts	-	Sarada Kakulu Pre School

❖ **Programmes conducted by the Job Planning Centre**

No	Description	Progress according to month												Total
		Jan	Feb	Mar	Apr	May	June	July	Aug	Sep	Oct	Nov	Dec	
01	Registration of Job candidates	72	74	31	45	52	45	58	33	30	36	39	32	547
02	Number of	55	100	50	23	43	36	25	22	19	21	16	20	430

	Employment Opportunities													
03	Adjustment of Jobs	18	11	12	10	17	11	17	14	11	10	13	12	156
04	Forwarding for employment	7	9	16	4	11	9	11	10	8	7	9	10	111
	Total	152	194	109	82	123	101	111	79	68	74	77	74	1244

## 13.5 Disaster Management and Hazards Study

### 01. Community awareness education and training

No	Training /Workshop	Date	Participants	Expenditure
01	Awareness program for Officers in Rattota Pradeshiya Sabha	2013.06.25	68	18000.00
02	Awareness program for School Volunteers groups in Dambulla Division	2013.06.21	130	7500.00
03	Awareness program for Officers in Ukuvela Pradeshiya Sabha	2013.07.15	70	18000.00
04	Awareness programme for Teachers in Naula Division	2013.07.29	94	19965.00
05	Awareness program for Youth Volunteers groups	2013.09.03	75	200000.00
06	Programme on First Aid and Camps Management	2013.09.10	58	15860.00
07	Awareness program of Officers in District level	2013.09.23	59	18000.00
08	Awareness program of Officers in Divisional level	2013.10.14	63	15490.00
09	Programme on First Aid and Camps Management	2013.11.12	72	18000.00
10	Awareness program of Officers in Divisional level	2013.11.20	77	16000.00
11	Programme on First Aid and Camps Management	2013.12.15/16/ 17	39 per day	27694.00
12	National Defiance Day Programme	2013. 12.23	130	8250.00
13	District Committee Meeting	2013.12.26	80	9980.00
14	Awareness program for rural community in Horagolla Village , Rattota Divisional Secretary's Division	2013.08.11	70	-
15	Awareness program for rural community in Polwattakanda Division , Rattota Divisional Secretary's Division	2013.07.31	59	-
16	Awareness program for Government Officers in Matale District	2013.08.11	78	-

### 02. Perpetration the plans for disaster pre perpetration and responding

No	Training /Workshop	Date	Participants	Expenditure
<b>Divisional Plans</b>				
01	Divisional Disaster Programme -Laggala	2013.06.20	75	16000.00
02	Divisional Disaster Programme -Yatawatta	2013.08.16	75	16000.00
<b>Rural Plans</b>				

03	Dankanda G.N.Division In Rattota Division	2013.07.05	65	3980.00
04	Galekoluwa G.N.Division In Rattota Division	2013.07.09	62	3980.00
05	Harasgama G.N.Division In Matale Division	2013.08.05	70	3980.00
06	Kandenuwara G.N.Division In Rattota Division	2013.08.24	72	3980.00
07	Kandemada G.N.Division In Ukuwela Division	2013.09.30	70	3980.00
08	Perakanatta G.N.Division In Wilgamuwa Division	2013.10.03	85	3980.00
09	Madakumbura G.N.Division In Rattota Division	2013.10.25	76	3980.00
10	Palwahara G.N.Division In Dambulla Division	2013.10.29	71	3980.00
11	Adawela G.N.Division In Naula Division	2013.11.05	71	3980.00
12	Atanwala G.N.Division In Laggala Division	2013.11.15	70	3980.00
13	Kumbukkandana G.N.Division In Wilgamuwa Division (Sponsored by World Vision Institute)	2013.12.09	98	-
14	Wilgamuwa G.N.Division In Wilgamuwa Division (Sponsored by World Vision Institute)	2013.12.15	84	-
<b>Dam Protection Plan</b>				
15	Bulanawawa G.N.Division In Galewela Division	2013.09.09	75	23000.00
16	Wilhatha G.N.Division In Dambulla Division	2013.09.09	72	23000.00
17	Ambana G.N.Division In Naula Division	2013.09.09	72	23000.00
18	Aturuparayaya G.N.Division In Dambulla Division	2013.09.09	93	23000.00
<b>Rehearsal Programmes</b>				
19	Kandenuwara G.N.Division In Rattota Division	2013.08.22	95	10000.00
20	Harasgama G.N.Division In Matale Division	2013.10.22	101	10000.00
21	Kandemada G.N.Division In Ukuwela Division	2013.11.11	100	13870.00
22	Adawela G.N.Division In Naula Division	2013.11.19	94	10000.00
23	Madakumbura G.N.Division In Rattota Division	2013.11.21	99	10000.00
<b>Divisional Plan Printing</b>				
	Printing Divisional Plans for Laggala, Galewela, Yatawatta, Ambangankorale	32000.00		28000.0

### 03 Disaster minimizing programme

No	Name of Training/ Programme	Date	Participants	Expenditure
01	The project to minimize flood water - Dambulla			4639034.05
02	The project to minimize land slits -Rattota			2327486.50

**04. Emergency Disaster Respond programme**

<b>No</b>	<b>Tasks</b>	<b>Expenditure</b>
01	Remove rocks near the house of Mr. Sunil Ranaweera , Ukuwela	57000.00
02	Fuel charges to drive away wild Elephants came to village	12130.00
03	Removing dangerous rocks in Delgolla Division -Yatawatta	44550.00
04	Removing dangerous rocks in Salagama Government School	57000.00
05	Controlling forest fire in Godaulpotha, Wilgamuwa	
06	Removing dangerous rocks in Udatanna G.N. division , Ukuwela	32000.00
07	Removing a tree fall in to two houses in Alwala G.N. division ,Ukuwela	8500.00
08	Transport a boat to Divisional Secretariat, Wilgamuwa	9100.00
09	Fuel charges to drive away wild Elephants came to village	5000.00
10	Remove rocks fell in to the house of Mrs. W.G. Anulawathi, in Unaweruwa G.N. Division, Yatawatta	39000.00

**7. Disaster relief services**

<b>No</b>	<b>Tasks</b>	<b>Expenditure (Rs. Million)</b>
01	Provided Disaster relief	1.96
02	Provided Housing aids	51.39

## 13.6 District land use and planning

### ❖ Land use

No	Programs	No of Programs	Expenditure
01	District land use planning committee	03	6000.00
02	Divisional land use committee	22	9000.00
03	Awareness programs in divisional level	26	47790.00
04	Divisional land use planning 1 <sup>st</sup> step	3	15000.00
05	Divisional land use planning 2 <sup>nd</sup> and 3 <sup>rd</sup> Steps.		
06	Rural land use planning- continue	2	20000.00
07	Rural land use planning- New	2	2,00,000.00
08	Plot level land use planning - new	4	1,99,367.00
09	Discretion of land and rehabilitation program	7	1,99,700.00
10	Special land inspection- Providing land for displaced people	122(land lots)	20,316.00
	Total	193	7,67,173.00

### Pictures relevant to land use



❖ **Land Reform**

No	Programme/Activity	Extent of excepted land (Physical Progress)			No. of beneficiaries
		Acres	Ro.	Pur.	
1	Preparing deeds for residences in lands belong to the Commission	36	2	10	295
2	Regularize of Encroachers	107	0	0	856
3	Selling lands	57	0	0	-
4	Recognizing lands relevant to the act	250	0	0	-
5	Clearance of lands proposed to acquiring purpose	700	0	0	-
6	Deviation of Environmental sensitive zones ( Reservation)	158	0	0	-
7	Wasteland development for up liftman of local agricultural production ( rent lands for investors)	24	0	0	04
8	Completion of legal bond and constitutional rights of the owners claimed their rights for the Commission	55	0	0	03
9	Earning money in using lands according to Circulars	-	-	-	-

❖ **Land Survey**

No	Implemented programme/project	No. of survey request	No. of lots surveyed	Expenditure (Rupees)	Physical Progress (%)
01					
02	Different surveys	101	1707	-	100
03	Acquisition surveys	83	8988	-	100
04	Engineer surveys	02	-	-	100
05	Bimsaviya programme	53	7152	-	100
06	Limning & Controlling surveys	01	-	-	100
07	Court surveys	01	-	-	100

## 13.7 Supplying information and maintaining

### 01. Collecting agriculture and livestock statistics

#### 1.1 Extent of paddy sown

Following are extent of paddy sown cultivated by irrigation system in last 2012/13 season.

Season	Sown extent (Acre)				Harvested extent (Acre)			
	Major	Minor	Rain fed	Total	Major	Minor	Rain fed	Total
2012/13 Maha	6234.4	8307.7	4635.3	19177.4	6234.4	8289.7	4584.7	19108.8

#### 1.2 Average crop and production – 2012/13 Maha season

Irrigation System	Average production - (Acre/Bushels)	Total production (Bushels)
Major	4947	-
Minor	4117	-
Rain fed	4101	-
Total	4384	75000

#### 1.3 Livestock statistics

Followings are Livestock statistics in Matale district for year 2012

Neat cattle	Cows Female	Milk Cows	6324
		Cows (above 02 years)	5174
		Female cows (below 02 years)	3897
		Other cows	803
	Male	Used to work	995
		Bulls below 02 years	2420
		Other bulls	401
Buffaloes	Female	Milk Cows	293
		Cows (above 02 years)	2084
		Cows (below 02 years)	1089
		Other cows	291
	Male	Used to work	1620
		Bulls below 02 years	994

		Other bulls	264
<b>Goats</b>	Male		5077
	Female		2380
<b>Pigs</b>	Breed		411
	Pigs above 02 months		1757
	Cubs below 02 months		723
<b>Poultry</b>	Eggs Production	Laying hens (rural and development)	84378
		Chickens	37283
	Cocks (rural)		19760
	Broilers		193662
<b>Average daily production</b>	Milk (liters)		31363
	Buffalo Milk		874
	Eggs		63900

## 02. Sri Lanka Labour Force Survey - 2010

The Sri Lanka labour force Survey is an on going Survey carried out January to December in this year which measure the current status of labour force characteristic in the country. The reports forwarded to sample Survey section as follows .

D.S Division	No of units
Galewela	9
Dambulla	7
Naula	4
Pallepola	3
Yatawaththa	4
Matale	7
Ambangankorale	3
Laggala	1
Wilgamuwa	4
Rattota	6
Ukuwela	9

## 03. Local Government statistics

The summary reports of general information, receipt analysis, expenditure analysis and income expenditure estimates of existing year forwarded to the section (Head office) for preparing National Accounts estimates.

#### 04. Collecting urban price index in Matale Town

Retail prices of open market in every Tuesday the retail prices of food and beverages in once a fortnight. Retail prices of miscellaneous items in once a month and retail prices of services and other consumer items in once a term should be forward to head office for preparing National Accounts.

#### 05. Producer's price

Selected and send to price center, farmer's price for selected three crops in every Divisional Secretary's Division.

#### 07\_Census of population and Housing -2013

- I. All estates in Sri Lanka( Preparing list for Farmers groups over 20 Acre has been finished between July- August in 2013
- II. Prepared list for all groups engaged in Industrial, commercial or other service has been finished with in the period of October- November ,2013

#### 08. Animal Slaughtering Statistics -

Animals	Amount
Neat Cattle	4925
Goats	195
Pigs	592

#### 01. Expenditure report

Provisions provided to the Statistical section has been expended as fallows

Subject	Allocations(Rs)	Expenditure(Rs)
Traveling expenses	396,000.00	374,487.50
Over time	15,000.00	977.40
Stationnaires	18,700.00	18,700.00
Fuel	26,000.00	26,000.00
Telephone	105,100.00	63,600.00
Postal		27,174.56
Computer Maintenance	34,6000.00	19,800.00
Industrial Survey	13,800.00	10,500.00
Paddy Harvesting Survey	94,300.00	69,660.00
Sample survey	88,073.20	64,693.80
Census of Population and Housing –counting activates	6,208,198.18	5,726,748.00
<b>Total</b>	<b>6,999,771.38</b>	<b>6,402,341.46</b>

### 13.8 Registration of Motor vehicles and Transport Development

No	Completed tasks in 2013	Progress
1	No of driving license applications for commercial vehicles	411
2	No of received driving license application for light weight vehicles	7603
3	No of inspected motor bicycles for new registrations	18
4	No of registered motor bicycles	16
5	No of issued number plats	3887
6	No of inspected vehicles for verification	425
7	Inspected accidents	631
8	Total revenue under 2003 .20. 14 of department of motor traffic branch accumulated by shroff of the Kachcheri	27322591.86
9	6000/0/15/161	33800.00
10	Number plates	6000.00
11	Written test/exam hall/ inspection.	55577.00
12	Office stationary expenditure	44935.00
13	Over time and holiday payment	297316.18
14	Water and electricity	138309.64
15	Telecommunication	19601.00
16	Traveling allowances	3933.64
17	Machineries	35974.98
18	Tax	17272.60
19	Furniture and office equipment	-
		162675.00

## 13.9 District Election Office

01. Election held in this year :- Central Provincial Council Election

02. Preparing voters list for 2013 started from 01.06.2013. Registered voters according to electorates mentioned as follows

No.	Election wards	Registered voters
1	Dambulla	129776
2	Laggala	69126
3	Matale	82717
4	Rattota	91696
	Total	373315

### 2013 voters register has certified in 2013.12.31

ii New applications for 2013 -26604  
iii Removed amount in 2013 -16265

03. Issued extracts of the voters register in year 2013 – 1398  
Income – Rs. 134720/=

### 04. Staff details:-

Assistant election commissioner -01  
Other offices – Management Assistant - 09  
K. K. S. - 04  
Drivers - 01

## 14.10 District Registration Activities

### Completed Tasks in 2013

(A)	1. No. of Marriage (Normal, Udarata) Birth & Death Registrars	27
	2. No. of Marriage Registrars	01
	3. No. of Marriage (Moor) Registers of	09
	4. No. of Birth & Death Medical Registrars	01
	5. No. of Curacy	01
	6. No. of retired Registrars	-
	7. No. of resigned Registrars	-
<b>(B) Registration of documents</b>		
	01. Notaries	
	1. No. of Notaries (Lawyers) engaging duties on 2013.01.01	-102
	2. No. of Notaries (Not Lawyers) engaging duties on 2013.01.01	-01
	3. No. of resigned/ died	01
	4. Suspended	--
	4. No. of new appointment received	-09
<b>02. Registration</b>		
	1. Number of deed received for registration	- 23023
	2. No. of claims schedules for registration	- 3401
<b>03. Protection of document</b>		
	1. Number of secondary copies of deeds received	-16868
<b>04. Number of applications received for copies of certificates</b>		
	1. Land documents extract	- 20099
	2. Deed copies	- 2834
	3. Abstracts	- 02
	4. Conjecture age certificates	- 40
<b>05. Number of applications to search document</b>		
	1. Land documents	- 2395
	2. Deeds and other documents	- 51

**06. Amount recovered****(a) Registration Fee**

1. Deeds and other documents - Rs. 2572000  
 2. Title - Rs. 1425

**(b) Application fees and fees for issuing copies of Certificates**

1. Deed copies, Land Documents and other Certificates copies - Rs. 635106  
 2. Title abstract and title reports - Rs. 5500

**© Fees for searching documents**

1. Land documents - Rs. 1227500  
 2. Deeds and other documents - Rs. 25500

**(d) Stamps for secondary copies**

	For the government	Municipal Council
Deeds & other documents	9304816/-	11032015/-
Title Reports	-	39700
	For the government	Municipal Council
Arrears recovered under Stamp fee act	8476/-	6900/-
Fines recovered under Stamp fee act	3844/-	-

(e) Fines recovered according to the order of the Registrar General regarding false of Notaries - No

**07. Civil Registrations**

1. Number of registered Marriages -14  
 2. Number of approved declaration -331

## Section 24

3. Number of issued suspicion age certificates - 121

**4. Copies of Marriages, Births, Deaths and suspicion age certificates**

- Number of received applications - 1675  
 Stamp fee recovered - 1563711/-  
 Number of copies issued - 3002

## 13.11 District Media Activities Co-ordination

Programs implemented by the District Media Unit in the year 2013

No	Programs/Projects	No. of Programs	Expenditure
01	Issues news relevant to the development of the District	150	-
02	Media co-ordination	175	-
03	Supply news for Government news web site. (NEWS.LK)	300	-
04	Preparing photo album (Reflection of Matale2013) about deferent programs in the District.	01	10000.00
05	Created news collection, regarding deferent social, culture and development activity coordinated by District Secretariat in 2013.	01	1000.00
06	Created news.lk book @matale book including news published in government Web Site (News.lk) relevant to the development of the district	01	8500
07	Coordinating "Sanhida" Program relevant to District development activities.	40	-
08	Similar to world Bamboo tree day, conducting media and organizing activates for the function was held in Yatawatta	01	-
09	Photographing, video grapping Wednesday Assembly ("Badada Hamuwa") and creating a Book relevant to it.	01	-
10	Participate for coordinating committee Environmental committee, Dengue committee, and special meetings which are relevant to district development activities.	-	-
11	Photographing, video of district development programs and protect them.	-	-
12	Held divisional media programmes collaboration with State News Department	01	75000
13	Opening of new media office and appreciate media persons.	01	25000

## 13.12 Payments of Line Ministries and Other Departments

Ministry	Expenditure Head	Capital	Recurrent
Ministry of Economic Development	105	586529002	154204272
Ministry of Disaster Management	106	38717351	2971884
Ministry of Justice & Law Reforms	110	-	5028545
Ministry of Cooperative & Internal Trade	116	1105183	223722
Ministry of Highway & Road Development	117	-	52471
Ministry of Agriculture	118	14189578	59548
Ministry of Children Development & Women Affairs	120	1960444	9464027
Ministry of Public Administration & Home Affairs	121	197578	635971
Ministry of Social Services	124	711498	71270743
Ministry of Technology & Researches	133	754225	1526242
Ministry of Irrigation & Water Management	152	352176	155214
Ministry of Land & Land Development	153	5200825	1733370
Ministry of Youth Affairs & Skill Development	156	1451877	275373
Ministry of Environment & Natural Resources	160	25000	-
Department of Buddhist Affairs	201	1345689	9600480
Department of Cultural Affairs	206	41288	309123
Department of Social Services	216	-	4300285
Department of Probation & Child Care Services	217	-	4231440
Department of Commissioner General of Samurdhi	218	47581	436439898
Department of Immigration & Emigration	226	-	225
Department of Agriculture	285	299465	1731490
Department of Census & Statistical	252	5582257	819904
Department of Pensions	253	-	367397111
Department of Motor Traffic	307	165676	618950
Ministry of National Languages & Social Integration	134	596000	20992
Department of Government Information	210	32593	7999
Ministry of Defense, Public Security, Law & Order	103	-	21916
Department of Registration of Persons	227	-	427615
Department of Land Commissioner General	286	305216	-
Department of Land use & Policy Planning	327	810438	3803926
Department of Christian Affairs	203	1300000	-
Department of Community Based Corrections	326	119879	-
Department of Manpower & Employment	328	509976	493619
Ministry of Agrarian Services & Wild Life	179	353545	54950
Ministry of Cultural & the Arts	177	5106455	-
Ministry of Public Management Reforms	173	127925	-
Ministry of Justice	228	2706594	-
Ministry of	130	-	792086
Ministry of Productivity Promotions	181	-	2898973
Ministry of Foreign Employment Promotion & Welfare	182	-	1627782
Department of Sports Development	219	496541	-

## 13.13 Financial Management

### Appropriation Account

Information of provisions and expenditure (Three year previous)

Expenditure Head - 259

Programme Number given in Annual Estimate	Pro. Name given in annual estimates	2013		2012		2011		2010	
		Provision in Budget Estimates	Total Expenditure	Provision in Budget Estimates	Total Expenditure	Provision in Budget Estimates	Total Expenditure	Provision in Budget Estimates	Total Expenditure
		Rs	Rs	Rs	Rs	Rs	Rs	Rs	Rs
01	Recurrent Operational Activities	436,825,000	435,057,769	414,282,218	413,293,024	314,800,000	311,333,818	306,500,000	295,546,816
	<b>Sub Total (Recurrent)</b>	436,825,000	435,057,769	414,282,218	413,293,024	314,800,000	311,333,818	306,500,000	295,546,816
01	Capital Operational Activities	50,250,000	47,764,804	33,350,000	23,662,379	22,650,000	22,049,127	30,500,000	19,582,794
	<b>Sub Total (Capital)</b>	50,250,000	47,764,804	33,350,000	23,662,379	22,650,000	22,049,127	30,500,000	19,582,794
01	Total of Recurrent	436,825,000	435,057,769	414,282,218	413,293,024	314,800,000	311,333,818	306,500,000	295,546,816
01	Total of capital	50,250,000	47,764,804	33,350,000	23,662,379	22,650,000	22,049,127	30,500,000	19,582,794
	<b>Grand Total</b>	487,075,000	482,822,573	447,632,218	436,995,403	337,450,000	333,382,945	337,000,000	315,129,610

## Appropriation Account 2013

D.G.S.A.1

Expenditure Head No: 259

Name of Ministry/Department/District Secretariat: Matale

Programme No	Title of the Programme given in Budget Estimates	01	02	03	04	05	06	Page No (Reference to relevant DEGAS 2 format)
		Provision in Budget Estimates	Supplementary Provision and Supplementary Estimate Allocation	Transfers in terms F.R 66 and 69	Total Net Provision	Total Expenditure	Net Effect Saving (Excess)	
		Rs	Rs	Rs	Rs	Rs	Rs	
01	<b>Recurrent Operational Activities</b>	362,525,000	74,300,000	0	436,825,000	435,057,769	1,767,231	2
	<b>Sub Total (Recurrent)</b>	362,525,000	74,300,000	0	436,825,000	435,057,769	1,767,231	
01	<b>Capital Operational Activities</b>	50,250,000	0	0	50,250,000	47,764,804	2,485,196	2
	<b>Sub Total (Capital)</b>	50,250,000	0	0	50,250,000	47,764,804	2,485,196	
	<b>Grand Total</b>	412,775,000	74,300,000	0	487,075,000	482,822,573	4,252,427	

## Appropriation Account by Programme

D.G.S.A: 2

Expenditure Head No: 259

Name of Ministry/Department/District Secretariat: District Secretariat, Matale

Programme No: & Title: 01 – Operation Activities

### Summary of Recurrent & Capital Expenditure

Nature of the Expenditure		01	02	03	04	05	06	Page No (Reference to relevant DEGAS 2 format)
		Provision in Budget Estimates	Supplementary Provision and Supplementary Estimate Allocation	Transfers in terms F.R 06 and 09	Total Net Provision (1+2+3)	Total Expenditure	Net Effect Saving (Excess)	
		Rs	Rs	Rs	Rs	Rs	Rs	
a	<b>Recurrent (DGSA 3)</b>	362,525,000	74,300,000	0	436,825,000	435,057,769	1,767,231	3
b	<b>Capital (DGSA 4)</b>	50,250,000	0	0	50,250,000	47,764,804	2,485,196	4 - 5
	<b>Grand Total</b>	412,775,000	74,300,000	0	487,075,000	482,822,573	4,252,427	

## Recurrent Expenditure by projects

**D.G.S.A: 3**

**Expenditure Head No: 259**

**Name of Ministry/Department/District Secretariat: Matale**

**Programme No: & Title: 01 – Operation Activities**

### Summary of Recurrent & Capital Expenditure

	01	02	03	04	05	06
Project No/ Name personnel emolument and all other project and other charges	Provision in Budget Estimates	Supplementary Provision and Supplementary Estimate Allocation	Transfers in terms F.R 06 and 09	Total Net Provision (1+2+3 )	Total Expenditure	Net Effect Saving (Excess) (4-5)
	Rs	Rs	Rs	Rs	Rs	Rs
<b><u>Project No:1, General Administration &amp; Title Establishment Service Dis Sec</u></b>						
Personnel Emolument						
Other Charges	22,600,000	72,800,000	550,000	95,950,000	95,873,187	76,813
	10,350,000		-600,000	9,750,000	9,508,912	241,088
<b>Sub Total</b>	<b>32,950,000</b>	<b>72,800,000</b>	<b>-50,000</b>	<b>105,700,000</b>	<b>105,382,099</b>	<b>317,901</b>
<b><u>Project No:2, General Administration &amp; Title Establishment Service Divi Sec</u></b>						
Personnel Emolument						
Other Charges	294,300,000	1,500,000	-550,000	295,250,000	294,366,756	883,244
	35,275,000		600,000	35,875,000	35,308,914	566,086
<b>Sub Total</b>	<b>329,575,000</b>	<b>1,500,000</b>	<b>50,000</b>	<b>331,125,000</b>	<b>329,675,670</b>	<b>1,449,330</b>
<b>Grand Total</b>	<b>362,525,000</b>	<b>74,300,000</b>	<b>0</b>	<b>436,825,000</b>	<b>435,057,769</b>	<b>1,767,231</b>

## Capital Expenditure by Projects

DGSA 4

Expenditure Head No: 259

Name of Ministry/Department/Dis:Sec - District Secretariat Matale

No and the Title of Activity - 1 Operational Activities

Project No and the Title - 01 Administrative & Establishment Services- District Secretariat

Object code No	Item No	Financial by (Code No)	Project No/ Personnel Emolument & other charges for all projects	Provision Frozen in annual estimates	Transfer In term of the FR 66 , 69 & Supplementary Provision and Supplementary Estimate Allocation	Total net provisions (1+2)	Total Expenditure	Net effect Suring (Excess) (3-4)
				(1)	(2)	(3)	(4)	(5)
			Rehabilitation and improvements of capital assets					
2001		11	Buildings	10,000,000	5,000,000	15,000,000	14,954,169	45,831
2002		11	Plant Machinery and Equipments	1,750,000		1,750,000	1,695,442	54,558
2003		11	Vehicles	3,000,000		3,000,000	2,496,663	503,337
			<b>Sub Total</b>	<b>14,750,000</b>	<b>5,000,000</b>	<b>19,750,000</b>	<b>19,146,273</b>	<b>603,727</b>
			<b>Acquisition of capital Assets</b>					
2102		11	Furniture and other equipments	5,000,000		5,000,000	4,895,562	104,438
2103		11	Plant machinery and equipments	3,000,000	-5,000,000	3,000,000	2,974,422	25,578
2104		11	Buildings	27,000,000		22,000,000	20,348,651	1,651,349
2401		11	Training	250,000		250,000	180,604	69,396
			<b>Sub Total</b>	<b>35,250,000</b>	<b>-5,000,000</b>	<b>30,250,000</b>	<b>28,399,239</b>	<b>1,850,761</b>
			<b>Total</b>	<b>50,000,000</b>	<b>0</b>	<b>50,000,000</b>	<b>47,545,512</b>	<b>2,454,488</b>

## Capital Expenditure by Projects

**Expenditure Head No 259**

**DGSA 4**

**Name of Ministry/Department/Dis:Sec** - District Secretariat Matale

**No and the Title of Activity** - 01 Operational Activities

**Project No and the Title** - 02 Divisional Secretariats

Object code No	Item No	Financial by (Code No)	Description of Item	Provision Frozen in budget estimates	Transfer Interim of the FR 66 and 69 & Supplementary Provision and Supplementary Estimate Allocation	Total net provisions	Total Expenditure	Net effect Suring (Excess) (3-4)
				(1)	(2)	(3)	(4)	(5)
			Rehabilitation and improvements of capital assets					
2001		11	Buildings			0		0
2002		11	Plant Machinery and Equipments			0		0
2003		11	Vehicles			0		0
			Sub Total		0	0	0	0
			<b>Acquisition of capital Assets</b>					
2102		11	Furniture and other equipments					
2103		11	Plant machinery and equipments					
2104		11	Buildings					
2401		11	Training	250,000	0	250,000	219,292	30,708
			<b>Sub Total</b>	<b>250,000</b>	<b>0</b>	<b>250,000</b>	<b>219,292</b>	<b>30,708</b>
			<b>Total</b>	<b>250,000</b>	<b>0</b>	<b>250,000</b>	<b>219,292</b>	<b>30,708</b>

## Summary of financing expenditure

DGSA 5

(Grand Total of Recurrent and Capital expenditure)

Name of Ministry/Department/Dis: Sec - District Secretariat, Matale

Head - 259

Code	Source	Programme i		ii		Grand Total		
	Code description	Net Provision 1	Actual Expenditure 2	Net Provision 3	Actual Expenditure 4	Net Provision 5	Actual Expenditure 6	Expenditure Presentage % (6/5)*100
		Rs	Rs	Rs	Rs	Rs	Rs	Rs
11	Domestic Funds	487,075,000	482,822,573			487,075,000	482,822,573	99
12	Foreign aid loan							
13	Foreign aid grants							
14	Reimbursable foreign aid loan							
15	Reimbursable foreign aid grants							
16	Counterpart fund							
17	Foreign aid related domestic funds							
21	Special law services							
		<b>487,075,000</b>	<b>482,822,573</b>	<b>0</b>	<b>0</b>	<b>487,075,000</b>	<b>482,822,573</b>	<b>99</b>

## Financing Summary of expenditure

DGSA 5-1

(Grand Total of Recurrent and Capital according to project)

Name of Ministry/Department/Dis:Sec - District Secretariat Matale

Head - 259

No and the Title of Activity - 01 Operational Activities

Code	Source	Project i		ii		iii		Taotal	
	Code description	Net Provision	Actual Expenditure	Net Provision	Actual Expenditure	Net Provision	Act u.Expe.		
								Net Provision	Actu.Expe.
11	Domestic Funds	155,700,000	152,927,611	331,375,000	329,894,962			487,075,000	482,822,573
12	Foreign aid loan								
13	Foreign aid grants								
14	Reimbursable foreign aid loan								
15	Reimbursable foreign aid grants								
16	Counterpart fund								
17	Foreign aid related domestic funds								
21	Special law services								
	<b>Total</b>	<b>155,700,000</b>	<b>152,927,611</b>	<b>331,375,000</b>	<b>329,894,962</b>	<b>0</b>	<b>0</b>	<b>487,075,000</b>	<b>482,822,573</b>

**Government Officer's Advance Account– upon F.R. 506 (D)**

**Annual Balancing Statement -2013**

**District Secretariat: Matale**  
**Subject No: 25901**

	<b>Maximum limit of expenditure</b>	<b>Minimum limit of receipt</b>	<b>Maximum limit of debit balance</b>
Limits given by the Appropriation Act	25,000,000.00	24,000,000.00	150,000,000.00
	-	-	-
Revised limits within the year	-	-	-
Order No:	-	-	-
Final balance in end of the year	30,448,760.40	36,628,208.79	114,544,797.04
Deducted: Transfer for 259012	5,504,341.00	9,425,167.32	3,920,826.32
(Final Balance upon F.R. 503 (i)) Actual balance	24,944,419.04	27,203,041.47	110,623,970.72

**Revenue Account as at 31. 12. 2013**

<b>Income Description</b>	<b>Code No:</b>	<b>Total (Rs)</b>
Government buildings rentals	2002-01-01	1738945.13
Interest	2002-02-99	5194863.62
W & O.Pension	2004-01-00	20989830.23
Income from government forests	2002-01-02	0.00
Administration Charges (Various)	2003-02-99	988411.63
Capital assets sales	2006-02-00	303290.00
Private timber transport	1003-07-03	453188.13
Tariffs on motor vehicle sales	1003-07-04	6000.00
Examinations and other charges	2003-02-13	680360.00
Other receipts	2003-99-00	9181895.97
Luxury vehicle tax	1003-01-01	200.00
Charges under the motor vehicles transport act	2003-02-14	27322591.86
Visa / Passport	2003-02-07	99000.00
Other license charges	1003-07-99	352748.65
Stamp fees	1002-07-00	0.00
License charges of Ministry of Public Security	1003-07-05	295060.00
Registration charges	1003-07-02	11630955.00
Other rentals	2002-01-99	4200.00
Land & other rentals	2002-01-03	304741.50
Forfeits and confiscations.	2003-03-00	1479363.63
Total		1066175.00
		82091820.35

**Monthly Expenditure Report - District Secretariat - Matale**  
**December - 2013**

<b>Expenditure No:</b>	<b>Category</b>	<b>Annual Estimates</b>	<b>Total Expenditure</b>	<b>Balance</b>
<b>Recurrent Expenditure</b>				
259-1-1-0-1001	Emoluments	15050000.00	15026762.59	23237.41
259-1-1-0-1002	Overtime & salary for holidays	600000.00	594424.45	5575.55
259-1-1-0-1003	Other allowances	80300000.00	80252000.00	48000.00
259-1-1-0-1101	Domestic travelling expenses	400000.00	383685.24	16314.76
259-1-1-0-1201	Stationeries	900000.00	899665.97	334.03
259-1-1-0-1202	Fuel	1200000.00	1169841.90	30158.10
259-1-1-0-1203	Uniforms	50000.00	49850.00	150.00
259-1-1-0-1301	Vehicles maintenance	1200000.00	1186438.08	13561.92
259-1-1-0-1302	Machineries maintenance	150000.00	140083.20	9916.80
259-1-1-0-1303	Buildings maintenance	100000.00	77178.34	22821.66
259-1-1-0-1402	Postal & Telephone	700000.00	699560.48	439.52
259-1-1-0-1403	Electricity & Telephone	1300000.00	1298674.71	1325.29
259-1-1-0-1404	Rentals payments	300000.00	300000.00	0.00
259-1-1-0-1405	Others	2500000.00	2465642.00	34358.00
259-1-1-0-1406	Property loan Interest receipts	950000.00	838292.44	111707.56
	<b>Total</b>	<b>105700000.00</b>	<b>105382099.40</b>	<b>317900.60</b>
<b>Capital Expenditure</b>				
259-1-1-0-2001	Buildings maintenance	15000000.00	14954168.65	45831.35
259-1-1-0-2002	Machinery maintenance	1750000.00	1695442.22	54557.78
259-1-1-0-2003	Vehicles maintenance	3000000.00	2496662.57	503337.43
259-1-1-0-2102	Official Furniture	5000000.00	4895562.01	104437.99
259-1-1-0-2103	Machinery	3000000.00	2974421.80	25578.20
259-1-1-0-2104	Construction of buildings	22000000.00	20348650.71	1651349.29
259-1-1-0-2401	Training	250000.00	195685.00	54315.00
	<b>Total</b>	<b>50000000.00</b>	<b>47560592.96</b>	<b>2439407.04</b>
<b>Recurrent Expenditure</b>				
259-1-2-0-1001	Emoluments	191150000.00	190449535.90	700464.08
259-1-2-0-1002	Overtime & salary for holidays	3800000.00	3790604.79	9395.21
259-1-2-0-1003	Other allowances	100300000.00	100200615.70	99384.33
259-1-2-0-1101	Domestic travelling expenses	6000000.00	5994891.41	5108.59
259-1-2-0-1201	Stationeries	6000000.00	5954709.36	45290.64
259-1-2-0-1202	Fuel	4000000.00	3949196.82	50803.18
259-1-2-0-1203	Uniforms and Food	350000.00	348391.00	1609
259-1-2-0-1301	Vehicles maintenance	3800000.00	3690388.15	109611.85
259-1-2-0-1302	Machineries maintenance	875000.00	862426.92	12573.08
259-1-2-0-1303	Buildings maintenance	600000.00	592486.44	7513.56
259-1-2-0-1401	Transport	25000.00	22000.00	3000
259-1-2-0-1402	Postal & communication	3075000.00	2856246.84	218753.16
259-1-2-0-1403	Electricity & Water	3000000.00	2926885.49	73114.51
259-1-2-0-1404	Rentals payments	150000.00	138833.65	11166.35
259-1-2-0-1405	Others	3600000.00	3594795.00	5205
259-1-2-0-1406	Interest of property loans	4400000.00	4377662.99	22337.01
259-1-2-0-2401	Training	250000.00	219291.80	30708.20
	<b>Total</b>	<b>331375000.00</b>	<b>329968962.30</b>	<b>1406037.75</b>
	<b>Grand Total</b>	<b>487075000.00</b>	<b>482911654.61</b>	<b>4163345.39</b>

**Basic failures and taken steps which included audit quarries which submitted by Auditor General regarding to Appropriation Account - 2013**

Not reported special failures. Only minor faults in day to day duties have been inspected by the audit. The advices were given to officers to take correct actions for those entire faults.