



2012

கார்ட்டு சா஁னா லார்கால சஸ லார்கீகா கீஐஐ
செயற்றிடட அறிககை ஡ற்றறும் வருடாந்த கணக்குகளு஡்
Performance Report and Annual Accounts

஁சர்ரீக லீக஡ கார்ட்டாலச - ஁஡ுரா஁புர

஡ாவட்ட செயலக஡ - அ஡ுராதபுர஡்.

District Secretariat – Anuradhapura

025 - 2222235

CONTENT

1. *Message of the District secretary*
2. *Introduction of the District secretariat*
3. *Vision*
4. *Mission*
5. *Introduction of the District*
6. *Administration Map of the District*
7. *Basic statistical Information of the District*
8. *Organizational Structure*
9. *Approved Cadre*
10. *Social Service Activities*
11. *Cultural Activities*
12. *Development Programs*
13. *Samurdhi Programme*
14. *Fertilizer Distributions*
15. *Production of other field Crop*
16. *Purchasing of Paddy*
17. *Annual Accounts*

Message of the District Secretary

The Arrival of “Wijaya” resembles the most significant juncture in the induction of “Aryas”. Habitats were formed in many parts of the island that was with the initiation of Anuradhagama. Rulers of the same stages showed the pathway to a prestigious endeavor afterwards in political, economic and cultural field.

The Arrival of Mahamahinda Thero with Buddhist philosophy took place 2300 years ago is the ever best prominent outcome from India to uplift the social spiritual value of the Sri Lankan community and it really impressed the Sri Lankan Buddhist society. The teachings of Buddhism led Sri Lankans towards the dawn of development with good ethics and at the same time political and administrative mechanism were systematically organized and further architecture, art and irrigation technology reached its high point and established a social, economical and cultural transforms as well.

The government has launched a number of development programmes under various sections to uplift the socio economic conditions of the people of Anuradhapura district who mainly earn their means of sustenance through agriculture.

Anuradhapura district secretariat performs as the main administrative body in the district and the progress achieved by the district secretariat through the programmes implemented during previous year is massive in comparison with past few years.

Introduction of “DeyataKirula” development exhibition to Anuradhapura district completely formalized the development measures and it inspired the expectations of government sector in every aspect.

I am very much impressed and happy to inform that I could perform a special role in year 2012 to advance the progress of every aspect of Anuradhapura district to ensure the pride of historical territory through coordination, feedback and progress control.

Mahinda Senevirathna
Government Agent / District Secretary
Anuradhapura

Introduction of District Secretariat

District Secretariat is situated in Anuradhapura District, within the divisional secretariat division of Nuwaragam Palatha-East in the center of Anuradhapura lieutenant Mengasfil who served as Government Agent in 1835, afterwards 71 Government Agents had served in Anuradhapura District.

District secretariat shows guidelines to all officers in learns to government polices to uplift the lives of 856232 populations within 2584 villages of 22 divisional secretariats

A decorative scroll graphic with a black outline and grey shaded ends, framing the text. The scroll is oriented vertically, with the top end on the right and the bottom end on the left.

VISION

To accomplish an effective Government Service and being the leader for all the Government officers to perform their duties in accordance with the giving priority to the agriculture, protecting the national cultures and world heritage to uplift the living status of the community through the Anuradhapura District.

A decorative scroll graphic with a black outline and grey shaded areas at the top-left, top-right, and bottom-left corners. The scroll is open in the middle, revealing the text.

MISSION

Our mission is to fulfill the public requirements efficiently, fairly, reasonably, and friendly coordination that operate institutes and resources of the Government enabling the public and the district to dedicate National Development.

Anuradhapura District

Anuradhapura District is a multi religion and multi lingual district and being bounded to the North by VauniyaMana and Mulathiu district and to the south by Kurunegala and Mathale District and to the West by Putthalama and Mannaram District and to the East by Polonnaruwa&Trincomali District Eight sacred places including “Jayasirimaha Bodhi” and Historical temples such as Thanthirimale and AukanaBuddhish statue are in the District and has become a paradise for local and forging tourists as well.

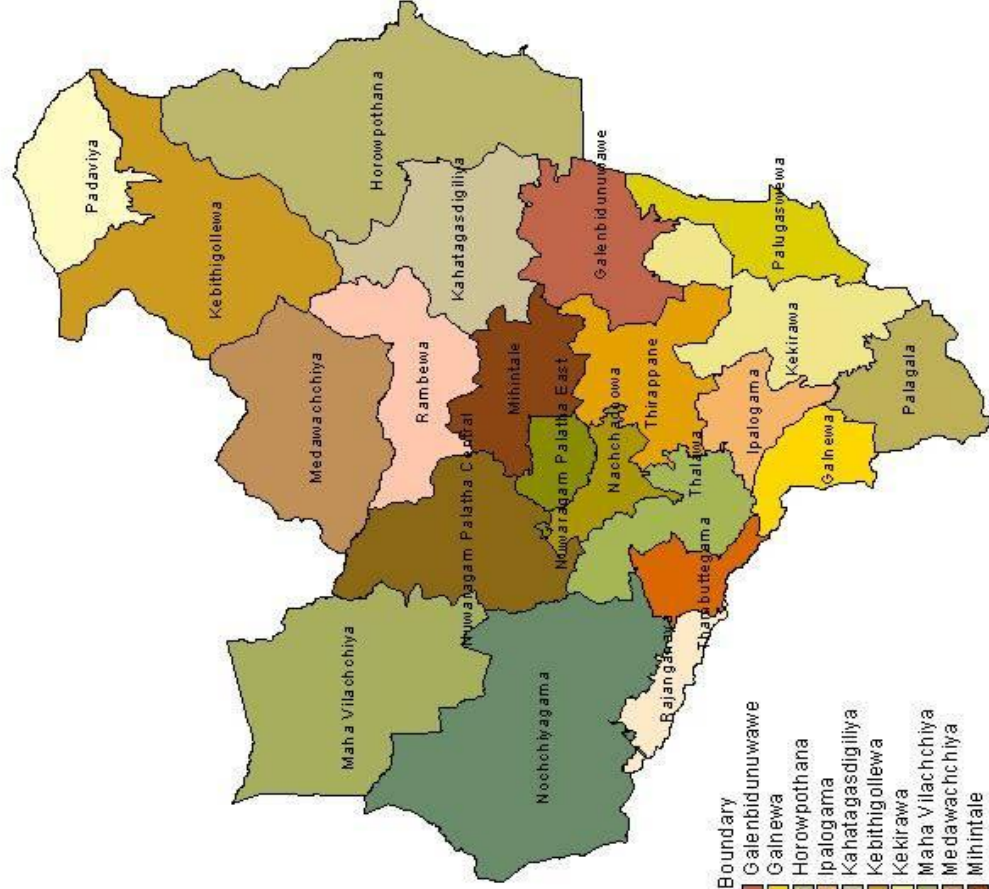
Main source of income of the District is agriculture and major crop cultivated is paddy. District covers the target through cultivating soya, maize, undu, gingerly and big onion as additional crops. Water required for the cultivation is provided through utilizing rain water and the irrigation system. Irrigation system consist of 2974 minor scale, 85 middle scale reservoirs and 12 Massive reservoirs including Kalawewa ,Abayawewa, Nacchaduwwewa, Thisawewa, Nuwarawewa, Rajanganayawewa & Padaviwewa in the District that are unbelievable in the sense of historical irrigation system wondering the present engineering experts as well.

Population of the District is 856232,

Dry zone features are obvious in district when it come to climatically condition and the average temperature is above 32^o c. Rain fall is reported as 1285mm.Rain fall is received from the middle of September to February through North East monsoon.

Anuradhapura Distract is very much significant among other District due to the historical value and heritage value in the district. The territory which provides prominent evidence of valued Sri Lank culture and heritage is absolutely fantastic.

D.S.Division of Anuradhapura District



- D. S. Boundary
- Galenbidunuwawe
 - Galnewa
 - Horowpothana
 - Ipalgama
 - Kahatagasdigiliya
 - Kebithigollewa
 - Kekirawa
 - Maha Vilachchiya
 - Medawachchiya
 - Mihintale
 - Nachchaduwawa
 - Nochchiyagama
 - Nuwaraagam Palatha Central
 - Nuwaraagam Palatha East
 - Padaviya
 - Palagala
 - Palugaswewa
 - Rajanganaya
 - Rambewa
 - Thalawa
 - Thambuttegama
 - Thirappane

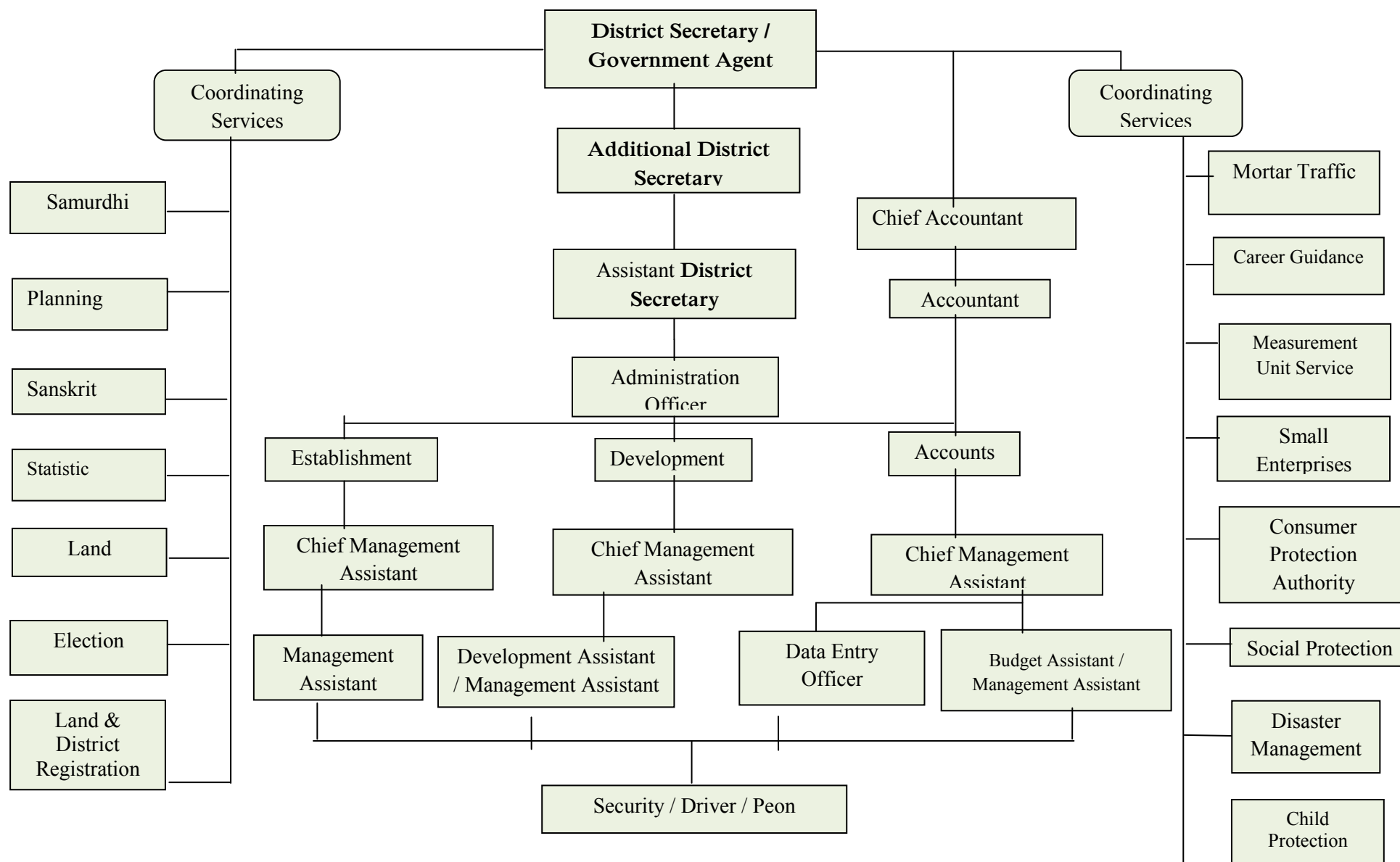
Scale : 1:800000

Prepared by
Land Use Planning Unit
Anuradhapura.

Basic Information – Anuradhapura District

➤ Name Of District	- Anuradhapura
➤ Province	- North Central
➤ Total Land	- 717900
➤ Number of Divisional Secretariats	- 22
➤ Number of Grama Niladhari Divisions	- 694
➤ Number of Villages	- 2584
➤ Number of Electorate Divisions	- 07
➤ Number of Pradesiya Sabas	- 18
➤ Circuit Bungalows	-01(under Ministry of Public Administration & Home Afire)
➤ Quartos	- 83
➤ Zonal Education Offices	- 05
➤ Number of Schools	- 540
➤ Number of School Teachers	- 10782
➤ Number of Members of the Parliament	- 09
➤ Number of Members of the Pradesiya Saba	-202
➤ Population	- 856232

Organizational Hierarchy of District Secretariat



Approved carder District secretariat - Anuradhapura

<i>District Secretariat</i>	<i>01 -</i>
<i>Additional District Secretariat</i>	<i>01 -</i>
<i>Assistant District Secretariat</i>	<i>01 -</i>
<i>Accountant Grade I</i>	<i>01 -</i>
<i>Accountant Grade II</i>	<i>01 -</i>
<i>Engineer</i>	<i>01</i>
<i>Administrative Officer</i>	<i>01 -</i>
<i>Technical Officer</i>	<i>01 -</i>
<i>Draftsman</i>	<i>01 -</i>
<i>Translator</i>	<i>01 -</i>
<i>Development Coordinator</i>	<i>01 -</i>
<i>Budget Assistant</i>	<i>02 -</i>
<i>Management Assistant</i>	<i>30 -</i>
<i>Data Entry Operator</i>	<i>01 -</i>
<i>Office Assistant</i>	<i>09 -</i>
<i>Driver</i>	<i>05 -</i>
<i>Sanitary workmen</i>	<i>01 -</i>

Programmes Implemented in the year 2012 by the Ministry of Social Service

01. Programme of Adult Secretariat

- Establishing adult committees
 - i. Established rural adult organizations -582
 - ii. Established divisional adult boards -22
 - iii. Established district adult boards -01

- Payment of allowance Rs: 1000/- for adult over 70 years – From 1st of June year 2012.

Number of adults received payment	Number of month paid	Total amount paid
8870	07	8,870,000x07

- Programs implemented by National Secretariat for the disabled persons
 - i. Housing programs for the disabled persons

Total houses received aids	Total amount paid	Number of houses completed	Number of houses were not completed
88	14,240,000.00	55	33

- ii. Providing living aids of Rs: 3000 for disabled person

Number of total benefited families	Amount for one month	For the year
748	2244000/-	26928000/-

- Sisu Nena Pubuduwa Programme

(Programme of improving library facilities in the difficult area)

Number of Libraries Established	Spent money
07	60,4500.00

- Community based rehabilitation programme
 - Providing commode toilet facilities for disabled person

construed commode toilet	Total amount paid
15	225,000.00

- Development of excess facilities

Number of excess road construed	Amount Spent
05	286,000.00

- Implementing community based program Total allocation received rs.750,000.00

- Programs Implemented
 - i. District operating committees
 - ii. Divisional operating committees
 - iii. Progress review meeting of primary groups
 - iv. Training programs of primary groups
 - v. Rural leadership mobilizing programmes
 - vi. Divisional self-help group meetings
 - vii. District board meeting of self help groups
 - viii. Community mobilizing programmes
 - ix. Progress review meeting of voluntary employees
 - x. New voluntary employee training workshops

- Coordination
 - i. Housing level coordination
 - ii. Referring to health service
 - iii. Referring education sector
 - iv. Referring to professional training
 - v. Income generating program
 - vi. Socialization

District secretariat Anuradhapura – Cultural Section

Serial Number	Programme	Period of started	Period of completed	Interdiction of Programme	Progress
.01	DeyataKirula Programme	2012.01.01	2012.03.30	<ul style="list-style-type: none"> ➤ Organizing Five programmes for art, dance, literate music in Anuradhapura district parade to Deyatakirula program ➤ Conducted programs for appreciation of songs, oral competing, Bali Shanti Karma, cultural show and exhibition from 05th to 13th February 2012 	
02	Distributing goods for Arcades	2012.02.06		Providing goods valued of Rs 2650000 for 53 Art centers	Supplying goods for every art cents have successfully completed
.03	National independent Festival	2012.01.01	2012.02.30	Participating 10 dancing groups from Anuradhapura district for cultural Perahera	Successfully completed
04	Issuing collections of admonitory structures	2012.01.01	2012.03.30	Conducted programs for students of Damma School at Divisional Secretarial level	Successfully completed
.05	National level films	2012.01.01	2012.03.30	Exhibiting two shows for student at divisional and district levels	Exhibiting was held at A/SwarnapaliBalikaVidyala and at cultural center of Kekirawa

.06	Divisional Literacy Competition	2012.02.27.	2012.05.31	Conducting Compton for students of School, Art centers Damma School at Divisional Secretarial level	Credited literacy creepier at 16 divisional secretarial
.07	Poson drumming Pooja	2012.06.04		Conducting drumming Pooja with participated 50 drummers at Ruwanweli premise	Successfully completed
.08	MihiduPerahera	2012.06.03		Organizing and participating with dancing groups for MihinduPerahera printing	Successfully completed
.09	Printing poson magazine	.2012May	2012.06.03	Printing a book contained programs conducted on posonpoya day through Ant Atom as tens	Successfully completed
.10	BuduBethi Gee Samadhi	2012.04.01	2012.06.30	Organizing BoduBathi Gee at district level Selecting one song out of 23 Divisional Secretariat	Coordinated with participation of 12 Division Secretariat.
.11	Divisional Literacy Festival	2012May	2012June	Organizing festivals at divisional secretariat level for appreciating Artists	Coedited canpetim within the month of September
.12	Divisional Literacy Competition	2012.06.01	2012.07.15	Secretariat creating at divisional level is appreciated at district level	Winners at district level was directed to National competing
.13	Divisional literacy Programme	2012.07.01	2012.09.30	Organizing one program out of music, literature, workshop, seminars and appreciating	Conducted on the month of October
14	District Literacy Festival	2012.10.11	2012.10.12	Organizing festivals for appreciation artists at district level by the District Secretariat	It was successfully conducted on 11,12 October at Thambuttegama Central Collage
15	Cultural Exhibiter	2012.10.01	2012.12.31	Conducting Tralee exhibition of traditional creation	10 artistes were arcaded at the festival

16	State Dancing Festival	2012.04.01	2012.07.30	Dancing won at district level was directed to National Completion	It was conducted at the month of December at cutlet center Kekirawa
17	Art Center Completion	2012.05.01	2012.07.30	Conducting out Art center Competing of district	It was conducted on 16-09-2012 at Niwathata Chattilya Vidyalaya Two groups were presented for National completion
18	State Art Festival	.2012 April	.2012 August	Conducting District Art Computation on 4-8-2012 for 150 students' at divisional level	It was conducted on 30 th September at Vivekananda Auditorium
19	Providing set of old books for Dammaschool	.2012 May		Providing old set of books for selected Dammaschool at divisional secreted level	District computation was held at Sama Bodhi Viharaya
19	Construing Cultured Center	2012.01.01	2012.12.31	Cultural Centers will be construed at Mahavillachchiya , Kebithigollawa , Kahatagasdigiliya , Horowpothana , Thabutthegama	Distribute for Dammaschool of Mihinthale and Kekirawa Constraining was completed at Willachchiya, Galnewa, Palagala, tender was called for construction kebithigollewa Center

Total Progress of District Development Programmer Anuradhapura as at 31.12.2012

	Programmer	No. of Projects	Provision Rs.(Million)	Expenses Rs. (Million)	Progress %	
					Physical	Finance
1	Gama Neguma continues	256	105.4	101.41	97	96
2	Gama Neguma one work for each village	680	571.24	458.73	87	80
3	DiviNeguma Programmer					
	i. Agriculture	239,960	45	24.56	98	54
	ii. Veteran resource development	2,291	14	11.05	100	78
	iii. Industrial development	765	6	4.9	85	81
	Sub Total	243,016	65	40.51		71
4	District decentralized capital budget program	847	47.27	47.27	100	100
5	Provincial rood rehabilitation	49	1,805.00	1,798.33	36	99
6	Primary school development	111	55.5	52.49	100	94
7	Tileprogram (Housing development)	30,630	973.76	513.11	49	52
8	Cash for work	701	263.02	169.76	86	64
9	Program of removing slit in the small tank (minar irrigating)	457	93	90.1	98	96
10	DeyataKirula 2012- Provincial Council Minor Irrigating Project	117	79	61.66	70	78
	Total	276,864	4,058.19	3,333.37		83

Divisional of Projects and Cash of Decentralized Budget According to Divisional Secretariats

Divisional Secretariat	Number of Projects	Spend Amount
1 Padaviya	20	1.24
2 Kebithigollewa	15	1.115
3 Medawacchiya	35	1.544
4 Rabewa	39	2.535
5 Horoupathana	24	1.533
6 Galenbidunuwewa	36	1.522
7 Kahathagasdigiliya	49	2.096
8 Nuwaragampalatha East	45	2.994
9 Nuwaragampalatha Central	52	4.825
10 Mahavilacchiya	32	2.031
11 Nocchiyagama	42	3.833

Divisional Secretariat	Number of Projects	Spend Amount
12 Thalawa	50	3.103
13 Tabutthegama	34	2.087
14 Rajanganaya	25	1.427
15 Galnewa	35	1.27
16 Ipalogama	33	1.62
17 Mihinthale	43	2.118
18 Thirappane	24	1.723
19 Kekirawa	71	2.319
20 Palugaswewa	18	0.429
21 Palagala	22	0.989
22 Nacchaduwa	31	1.198
Total	775	43.549

**Decentralized Budget Program
Summary of Final Progress Report as at 31.12.2012**

Allocation Resources	Allocated provision Rs. (Million)	Expenditure Rs. (Million)	Balance Amount	Number of Approved Projects	Number of Completed Projects
1 – Hon district Member of Parliament					
I. For projects	43.65	41.719	1.829	850	818
ii. For Administrative Expenditure	1.35	1.137	0.213		
Sub Total	45	42.856	2.042	850	818
2- Hon Member of Parliament selected by National List					
I. For projects	2.275	2.25	0.024	29	29
Sub Total	2.275	2.25	0.024	29	29
Total	47.275	45.107	2.066	879	847
3 – Special project (Purchasing Mamotee Plates)		2.066			

Aggregated Progress – Divineguma 2012

Divisional Secretariat		Agrarian Development(Million Rs.)	Livestock Development (Million Rs.)	Industries Development(Million Rs.)	Total (Million Rs.)
1	Padaviya	0.779	0.404	0.132	1.314
2	Kebithigollewa	1	0.931	0	1.931
3	Medawachchiya	0.57	0.4	0.251	1.221
4	Rambewa	1.489	0.488	0.277	2.254
5	Horowpothana	0.937	0.394	0.03	1.361
6	Galembindunuwewa	1.627	0.408	0.022	2.057
7	Kahatagasdigiliya	1.944	0.696	0.136	2.776
8	N.PE	0.01	0.39	0.526	0.926
9	N.P.C	0.317	0.397	0.068	0.782
10	Mahawillachchiya	0.964	0.4	0.148	1.512
11	Nochchiyagama	2.915	0.4	0.139	3.454
12	THalawa	1.56	0.399	0.313	2.271
13	Thambuttegama	0.99	0.399	0.196	1.585
14	Rajanganaya	0.866	0.42	0.12	1.406
15	Galnewa	1.28	0.4	0.465	2.145
16	Ipalogama	1.274	1.063	0.324	2.661
17	Mihinthale	0.948	0.398	0.636	1.982
18	Thirappane	0.985	0.803	0.268	2.055
19	Kekirawa	0.477	0.332	0.048	0.857
20	Palugaswewa	1.059	0.397	0.097	1.554
21	Palagala	0.971	0.4	0.032	1.403
22	Nachchaduwa	1.601	0.738	0.663	3.002
Total		24.562	11.053	4.904	40.519

Divi Neguma National Programme – 2012.12.30

Livestock Section

Divisional Secretariat	No. familial	Hen Management		Gobat Management		Bee Management		Cattle Management		Swallow Management		Total Expend
		Number of Chicks	Spend Amount	Number of Chicks	Spend Amount	Number of Bee Endemic	Spend Amount	Number of Chicks	Spend Amount	Number of Chicks	Spend Amount	
1 Padaviya	99	990	404,100									404,100
2 Kebithigollewa	227	2,270	930,700									930,700
3 Medawachchiya	244	2,440	399,750									399,750
4 Rambewa	98	980	397,700					3	90,000			487,700
5 Horowpothana	96	960	393,600									393,600
6 Galebindunuwewa	97	970	397,700			10	10,000					407,700
7 Kahatagasdigiliya	97	970	397,700		45,000	4	8,000		245,000			695,700
8 N.PE	95	950	389,500									389,500
9 N.P.C	184	1,840	397,100									397,100
10 Mahawillachchiya	98	980	399,750									399,750
11 Nochchiyagama	80	800	321,000	18	69,000					80	10,000	400,000
12 THalawa	75	750	398,500									398,500
13 Thambuttegama	105	1,050	399,100									399,100
14 Rajanganaya	100	1,000	400,000			10	20,000					420,000
15 Galnewa	100	1,000	400,000									400,000
16 Ipalogama	337	3,370	1,018,470			45	44,440					1,062,910
17 Mihinthale	97	970	397,700									397,700
18 Thirappane	80	800	320,000	12	47,215			15	435,500			802,715
19 Kekirawa	81	810	332,100									332,100
20 Palugaswewa	76	760	311,600			71	85,300					396,900
21 Palagala	97	970	399,750									399,750
22 Nachchaduwa	180	1,800	738,000									738,000
එකතුව	2,743	27,430	10,325,350	30	161,215	140	167,740	18	770,500	80	10,000	11,053,275

Divineguma National Programme – Industrial Section 2012
Anuradhapura District

Progress of Distribution Equipment in Divisional Secretary Level as at 2012-12-31

Divisional Secretariat	Institute Training Given							No of Equipment	Total Expenses Rs.		
	Industrial Development Board	Ministry of Youth Affairs	National Engineering Re. & Deve. C.	Athar C Cleark Opinion for Modern Technology	Entrepreneur Development Authority	Ministry of Science & Technology	National Craft Council		Government Contribution Rs.	Beneficiary Contribution Rs.	Total Expenses Rs.
1 Padaviya	3							3	90,000	90,000	180,000
2 Kebithigollewa	5							5	150,000	186,475	336,475
3 Medawachchiya	6	1						7	157,197	172,425	329,621
4 Rambewa			1					1	29,750	30,000	59,750
5 Horowpothana	13	1		1				15	323,330	353,287	676,616
6 Galembindunuwewa	3	1						4	56,495	56,495	112,989
7 Kahatagasdigiliya	2				1			3	48,300	48,300	96,600
8 N.PE	8	2						10	158,300	158,300	316,599
9 N.P.C	5	1						6	88,770	88,770	177,540
10 Mahawillachchiya	9	2				1	1	13	222,250	423,750	646,000
11 Nochchiyagama	9		2					11	182,353	216,855	399,207
12 THalawa	15					4		19	356,184	356,484	712,668
13 Thambuttegama	6		1					7	193,617	193,617	387,234
14 Rajanganaya						1		1	30,000	43,800	73,800
15 Galnewa	5							5	75,550	75,550	151,099
16 Ipalogama		1						1	18,499	18,500	36,999
17 Mihinthale	20	14	2		1			37	582,092	1,104,947	1,687,038
Total	109	23	6	1	2	6	1	148	2,762,684	3,617,552	6,380,235

Ministry of Economic Development
Gamaneguma Programme 2011- Continuation
Progress as at 31-12-2012

District - Anuradhapura

Divisional Secretariat	Component												Total Progress							
	Road, Bridge & Culvert		Water Drainage		Small Irrigation		Mother Care Center		Free School		Other		No. of Projects	Physical Progress					Finance Progress	
	No. of Projects	Allocation Rs. (Million)	No. of Projects	Allocation Rs. (Million)	No. of Projects	Allocation Rs. (Million)	No. of Projects	Allocation Rs. (Million)	No. of Projects	Allocation Rs. (Million)	No. of Projects	Allocation Rs. (Million)		Project not Started	0-25	26-50	51-75	76-100	Ceased Duty	Total Allocation Rs. (Million)
1 Padaviya	1	0.76											1					1	0.76	0.76
2 Kebithigollewa	2	1.007			3	0.774			2	0.130	2	0.106	9					9	2.02	1.28
3 Medawachchiya	6	5.624					4	3.869					10					10	9.49	8.03
4 Rambewa	2	2.326	2	0.087	8	3.849	5	3.192	1	0.088	13	2.659	31	1				30	12.20	10.44
5 Horowpothaa	1	0.548	2	0.131	4	0.172	2	4.330	1	0.100	5	0.749	15					15	6.03	4.21
6 Galenbindunuwewa			3	0.781	1	0.270	1	0.328					5					5	1.38	0.98
7 Kahatagasdigiliya	0	0.000	0	0.000	0	0.000	0	0.000	0	0.000	0	0.000	0					0	0.00	0.00
8 N.PE	1	4.069			4	7.007	3	4.067					8					8	15.14	12.16
9 N.P.C	2	0.302			2	0.340							4					4	0.64	0.53
10 Mahawillachchiya							2	4.680					2					2	4.68	2.52
11 Nochchiyagama			7	4.200	3	1.928	4	4.411					14					14	10.54	8.95
12 THalawa					1	0.818							1					1	0.82	0.54
13 Thambuttegama	0	0.000	0	0.000	0	0.000	0	0.000	0	0.000	0	0.000	0					0	0.00	0.00
14 Rajanganaya	7	0.943	5	1.624	11	4.507	4	3.318			8	2.007	35					35	12.40	11.52
15 Galnewa	5	1.449	2	2.297	6	3.687	2	1.692					15			1		14	9.13	7.27
16 Ipalogama					8	3.027	2	0.035					10					10	3.06	2.92
17 Mihinthale	3	2.248			2	1.980	3	2.347			2	0.731	10		1			9	7.31	6.81

18	Thirappane			1	0.364	2	1.198	3	3.478			6	0.461	12				2	10	5.50	3.94	
19	Kekirawa	3	1.102	1	0.080	6	5.382	3	1.258	1	0.120	25	4.498	39				1	38	12.44	8.92	
20	Palugaswewa	3	0.916			6	3.454	2	2.120			14	3.715	25			1		24	10.21	6.77	
21	Palagala			1	0.250	3	1.231	1	0.556			5	1.621	10					10	3.66	2.86	
22	Nachchaduwa	0	0.000	0	0.000	0	0.000	0	0.000	0	0.000	0	0.000	0					0	0.00	0.00	
Total		36	21.293	24	9.814	70	39.624	41	39.681	5	0.438	80	16.547	256		1	2	1	3	249	127.40	101.41

Reconstruction Programme for 50000 Primary School & 1000 Secondary School

District :Anuradhapura

Abstracts Progress Report as at 31-12-2012

Divisional Secretariat	No. of Approved School	No. of Project Started School	Allocated provision Rs.	Estimated Value Rs.	Expenditure Rs.		Total Rs.	No. of School Wok Ended	No. of Beneficiary – Teachers & Student
					Government Contribution Rs.	Beneficiary Contribution Rs.			
1 Padaviya	4	4	2,000,000	2,979,595	2,000,000	999,595	2,999,595	4	860
2 Kebithigollewa	9	9	4,500,000	6,251,014	4,500,000	1,827,357	6,327,357	9	1,040
3 Medawachchiya	–	–		–	–			–	
4 Rambewa	9	9	4,500,000	5,348,313	4,476,476	557,413	5,033,890	9	716
5 Horowpothaa	5	5	2,500,000	3,094,177	2,500,000	317,511	2,817,511	5	1,200
6 Galenbindunuwewa	6	6	3,000,000	3,903,162	3,000,000	428,642	3,428,642	6	1,119
7 Kahatagasdigiliya	3	3	1,500,000	3,291,286	1,000,000	1,775,582	2,775,582	3	129
8 N.PE	3	3	1,500,000	2,226,027	1,500,000	726,027	2,226,027	3	3,022
9 N.P.C	2	2	1,000,000	1,748,467	1,000,000	179,077	1,179,077	2	250
10 Mahawillachchiya	–	–		–			0	–	
11 Nochchiyagama	15	14	7,000,000	9,537,120	7,000,000	2,253,834	9,253,834	14	3,045
12 THalawa	4	4	2,000,000	2,277,171	1,734,432	224,721	1,959,153	4	635
13 Thambuttegama	5	5	2,500,000	3,927,606	2,227,164	1,326,603	3,553,767	5	2,814
14 Rajanganaya	4	4	2,000,000	2,924,996	2,000,000	924,996	2,924,996	4	1,114
15 Galnewa	9	9	4,500,000	6,552,780	4,048,047	760,202	4,808,249	9	2,308
16 Ipalogama	5	5	2,500,000	3,374,146	2,500,000	981,600	3,481,600	5	450
17 Mihinthale	5	5	2,500,000	3,138,803	2,500,000	638,803	3,138,803	5	1,313
18 Thirappane	3	3	1,500,000	2,475,396	1,500,000	167,679	1,667,679	3	199
19 Kekirawa	11	11	5,500,000	5,622,431	4,900,383	809,337	5,709,720	11	2,387
20 Palugaswewa	2	2	1,000,000	1,517,930	999,894	184,700	1,184,594	2	192
21 Palagala	5	5	2,500,000	3,463,992	1,873,170	592,085	2,465,255	5	958
22 Nachchaduwa	3	3	1,500,000	2,694,393	1,233,222	1,194,393	2,427,614	3	338
Total	112	111	55,500,000	76,348,804	52,492,789	16,870,155	69,362,943	111	24,089

Reconstruction Programme of 5000 Primary School & 1000 Secondary School

District :Anuradhapura

Abstracts Progress Report as Divisional Secretariat Level

Divisional Secretariat	No. of School	Total Expenses Rs.	Power Supply Cost Rs.	Development of lavatory & Sanitary Rs.	Development of Drinking Water Rs.	Gate & Fence Of School Rs.	Building Development & Paint Plating	Developed as Sample Garden Rs.	School Name Board Rs.	1 st Year Class Room Development Rs.	Arranged Children Manic Area Rs.	Repairing Teachers Quartos Rs.	Other Rs.	Total Rs.
1 Padaviya	4	2,979,595				434,020	977,274		10,000		558,707		20,000	2,000,000
2 Kebithigollewa	9	6,249,595	586,139	121,000	293,170	1,485,532	1,320,113	1,000	47,000		646,046			4,500,000
3 Medawachchiya														
4 Rambewa	9	5,034,243	170,263	171,755		183,717	3,769,667				181,075			4,476,476
5 Horowpothaa	5	2,817,511		15,000		780,000	1,705,000							2,500,000
6 Galenbindunuwewa	6	2,536,800	142,448	4,600	23,460	625,452	1,948,242		14,500		241,299			3,000,000
7 Kahatagasdigiliya	3	3,276,074	139,909		133,149	98,642	449,507	35,000	10,000	59,383	59,421		14,989	1,000,000
8 N.PE	3	226,027		25,000		12,557	1,358,301			84,143	20,000			1,500,000
9 N.P.C	2	1,058,940		45,540	56,134	65,600	532,535	154,623			135,568		10,000	1,000,000
10 Mahawillachchiya														
11 Nochchiyagama	14	9,217,874	318,227	19,090	273,233	3,077,591	2,345,938		31,992		822,785	111,143		7,000,000
12 THalawa	4	1,959,153	40,754	730,118		361,988	601,573							1,734,432
13 Thambuttegama	5	3,801,830	318,627	47,171		938,046	267,319				631,002		25,000	2,227,164
14 Rajanganaya	4	2,941,527	90,466		28,200	635,911	729,369		34,839	235,677	245,538			2,000,000
15 Galnewa	9	3,000,550	110,612	180,746	534,007	1,064,701	1,875,266		132,800		20,001	98,913	31,000	4,048,047
16 Ipalogama	5	3,481,600	32,165		78,428	349,803	1,629,704	31,900	33,000	60,000	266,800	18,200		2,500,000
17 Mihinthale	5	3,138,803		152,486	231,029	506,627	719,282			320,317	520,862	49,397		2,500,000
18 Thirappane	3	1,918,483	77,750		164,357	383,076	309,127				476,518		89,172	1,500,000
19 Kekirawa	11	4,148,006				1,471,248	3,177,235				251,900			4,900,383
20 Palugaswewa	2	1,155,192	78,594	21,346		317,385	531,691				50,878			999,894
21 Palagala	5	202,069	58,490	178,431	411,996	241,293	897,163	85,798						1,873,170
22 Nachchaduwa	3	2,176,989	44,496		1,104	190,726	591,747	113,776		48,946	242,428			1,233,222
Total		61,320,860	2,208,940	1,712,283	2,228,266	13,223,914	25,736,050	422,097	314,131	808,465	5,370,827	277,654	190,161	52,492,789

Reconstruction Programme of 5000 Primary School & 1000 Secondary School

District :Anuradhapura

Abstract According to Component as Divisional Secretariat Level

Divisional Secretariat	No. of School	Total Expenses Rs.	Power Supply Cost Rs.	Development of lavatory & Sanitary Rs.	Development of Drinking Water Rs.	Gate & Fence Of School Rs.	Building Development & Paint Plating	Developed as Sample Garden Rs.	School Name Board Rs.	1 st Year Class Room Development Rs.	Arranged Children Manic Area Rs.	Repairing Teachers Quartos Rs.	Other Rs.	Total Rs..
1 Padaviya	4	2,979,595				434,020	977,274		10,000		558,707		20,000	2,000,000
2 Kebithigollewa	9	6,249,595	586,139	121,000	293,170	1,485,532	1,320,113	1,000	47,000		646,046			4,500,000
3 Medawachchiya														
4 Rambewa	9	5,034,243	170,263	171,755		183,717	3,769,667				181,075			4,476,476
5 Horowpothaa	5	2,817,511		15,000		780,000	1,705,000							2,500,000
6 Galenbindunuwewa	6	2,536,800	142,448	4,600	23,460	625,452	1,948,242		14,500		241,299			3,000,000
7 Kahatagasdigiya	3	3,276,074	139,909		133,149	98,642	449,507	35,000	10,000	59,383	59,421		14,989	1,000,000
8 N.PE	3	226,027		25,000		12,557	1,358,301			84,143	20,000			1,500,000
9 N.P.C	2	1,058,940		45,540	56,134	65,600	532,535	154,623			135,568		10,000	1,000,000
10 Mahawillachchiya														
11 Nochchiyagama	14	9,217,874	318,227	19,090	273,233	3,077,591	2,345,938		31,992		822,785	111,143		7,000,000
12 THalawa	4	1,959,153	40,754	730,118		361,988	601,573							1,734,432
13 Thambuttegama	5	3,801,830	318,627	47,171		938,046	267,319				631,002		25,000	2,227,164
14 Rajanganaya	4	2,941,527	90,466		28,200	635,911	729,369		34,839	235,677	245,538			2,000,000
15 Galnewa	9	3,000,550	110,612	180,746	534,007	1,064,701	1,875,266		132,800		20,001	98,913	31,000	4,048,047
16 lpalagama	5	3,481,600	32,165		78,428	349,803	1,629,704	31,900	33,000	60,000	266,800	18,200		2,500,000
17 Mihinthale	5	3,138,803		152,486	231,029	506,627	719,282			320,317	520,862	49,397		2,500,000
18 Thirappane	3	1,918,483	77,750		164,357	383,076	309,127				476,518		89,172	1,500,000
19 Kekirawa	11	4,148,006				1,471,248	3,177,235				251,900			4,900,383
20 Palugaswewa	2	1,155,192	78,594	21,346		317,385	531,691				50,878			999,894
21 Palagala	5	202,069	58,490	178,431	411,996	241,293	897,163	85,798						1,873,170
22 Nachchaduwa	3	2,176,989	44,496		1,104	190,726	591,747	113,776		48,946	242,428			1,233,222
Total	111	61,320,860	2,208,940	1,712,283	2,228,266	13,223,914	25,736,050	422,097	314,131	808,465	5,370,827	277,654	190,161	52,492,789

Reconstruction Programme of 5000 Primary School & 1000 Secondary School

No. of Divisional Secretariat Project Implemented -20

No. of School-111

Abstract Cost According to Activities as at 2012.12.31

Activity	No. of Dedicated School	No. of School Project Started	No. of School Project Ended	Allocated provision Rs.	Cost Rs.
1 Electricity Power Supply	34	34	34	55,500,000	2,208,940
2 Development of lavatory & Sanitary	26	26	26		1,712,283
3 Development of Drinking Water	38	38	38		2,228,266
4 Arrange Gate & Fence Of School	81	81	81		13,123,914
5 Building Development & Paint Plating	99	99	99		25,836,051
6 Developed as Sample Garden	7	7	7		422,097
7 School Name Board	14	14	14		314,131
8 1 st Year Class Room Development	8	8	8		808,465
9 Arranged Children Manic Area	56	56	56		5,370,827
10 Repairing Teachers Quartos	5	5	5		277,654
11 Other	3	3	3		190,161
Total	371	371	371	55,500,000	52,492,789

Tiles Procure Programm for Not Assured Roof House from Dayata Kirula Programm

Anuradhapura District

Progress of Tiles Procure as at 2012-12-31

Divisional Secretariat	No. of Beneficiary	Amount of Tiles Required	No. of Tiles Issued to Beneficiary	No. of Houses Covered form Tiles	Allocated provision Rs.	Expenditure Re.	Progress	
							Physical%	Finance %
1 Padaviya	1,271	1,134,610	472,000	472	39,711,350	16,520,000	41.00	41.00
2 Kebithigollewa	710	710,000	614,341	633	24,850,000	21,501,935	77.04	76.00
3 Medawachchiya	769	535,650	524,714	565	18,747,750	18,364,990	73.47	69.00
4 Rambewa	1,164	944,977	814,801	874	33,074,195	28,518,035	71.74	70.00
5 Horowpothaa	2,468	2,351,100	1,510,071	1,645	82,288,500	52,852,485	66.65	64.23
6 Galenbindunuwewa	1,043	1,043,000	609,340	692	36,505,000	21,326,900	66.35	58.42
7 Kahatagasdigiliya	1,888	1,576,903	558,924	540	55,191,605	19,562,340	38.20	35.44
8 N.PE	759	595,752	400,810	416	20,851,320	14,028,350	62.00	60.00
9 N.P.C	928	928,000	621,130	530	32,480,000	21,739,550	57.11	56.00
10 Mahawillachchiya	823	603,185	508,267	490	21,111,475	17,789,345	59.54	54.00
11 Nochchiyagama	2,449	1,994,560	933,639	1,153	69,809,600	32,677,365	47.08	35.00
12 THalawa	1,567	1,567,000	851,250	784	54,845,000	29,793,750	50.03	49.00
13 Thambuttegama	2,378	2,378,000	891,811	836	83,230,000	31,213,385	41.00	35.00
14 Rajanganaya	2,094	1,838,454	917,476	986	64,345,890	32,111,660	44.17	42.00
15 Galnewa	1,537	1,537,000	778,040	831	53,795,000	27,231,400	54.07	30.00
16 Ipalogama	1,258	1,173,250	602,832	714	41,063,750	21,099,120	39.00	38.00
17 Mihinthale	664	623,400	285,075	371	21,819,000	9,977,625	46.00	45.73
18 Thirappane	1,528	1,359,980	731,525	791	47,599,300	25,603,375	48.00	43.00
19 Kekirawa	1,778	1,593,500	604,942	532	55,772,500	21,172,970	38.00	37.96
20 Palugaswewa	796	638,820	306,851	796	22,358,700	10,739,785	51.00	48.03
21 Palagala	2,171	2,169,500	822,872	877	75,932,500	28,800,520	37.00	36.00
22 Nachchaduwa	587	525,195	299,825	310	18,381,825	10,493,875	58.00	57.09
Total	30,630	27,821,836	14,660,536	15,838	973,764,260	513,118,760	49.00	43.64

**“Cash for Work” Project
Anuradhapura District**

Progress of Cultivation loss due to Drought in Divisional Secretariat Level as at 2012-12-31

Divisional Secretariat	No. of Projects	Allocated provision Rs.	Expenditure Rs.	No. of Beneficiary Families	Physical Progress %	Finance Progress %
1 Kebithigollewa	7	1,030,000	1,030,000	92	100.00	100.00
2 Medawachchiya	19	2,000,000	2,000,000	236	100.00	100.00
3 Rambewa	7	5,910,000	5,910,000	349	100.00	100.00
4 Horowpothaa	5	1,545,000	518,500	195	35.00	27.00
5 Galenbindunuwewa	10	5,528,000	5,528,000	501	100.00	100.00
6 Kahatagasdigiliya	7	1,780,000	1,654,000	123	100.00	92.92
7 N.PE	2	37,000	37,000	61	100.00	100.00
8 N.P.C	3	273,500	273,500	84	100.00	100.00
9 Mahawillachchiya	9	6,210,000	3,726,000	519	60.00	60.00
10 Nochchiyagama	103	22,279,000	22,279,000	4804	100.00	100.00
11 THalawa	94	18,030,500	18,030,500	7747	100.00	100.00
12 Thambuttegama	58	75,335,651	41,549,000	9765	67.00	55.00
13 Rajanganaya	19	6,675,000	5,116,500	1335	79.00	76.65
14 Galnewa	88	26,555,500	26,555,500	4371	100.00	100.00
15 Ipalogama	189	42,317,500	11,206,000	8455	26.48	26.48
16 Mihinthale	10	620,000	620,000	149	100.00	100.00
17 Thirappane	4	2,000,000	2,000,000	62	100.00	100.00
18 Kekirawa	8	1,165,000	1,165,000	101	100.00	100.00
19 Palugaswewa	7	1,960,854	1,960,854	221	100.00	100.00
20 Palagala	50	38,410,125	15,246,000	3400	42.00	39.69
21 Nachchaduwa	2	3,355,125	3,355,125	192	100.00	100.00
Total	Total	263,017,754	169,760,479	42762	86.16	64.54

Arrangement Clemency for Aggrieved Areal from Drought -2012
Anuradhapura District
Slit Removal Programme Small Lake (Small Irrigation) -2012
Progress as at 2012-12-31

Divisional Secretariat	No. of Lake	Estimated Value Rs.	Physical Progress%	Quantity of Removed Slit (cube)	Paid As at 2012-12-31 Rs.	Payment furthermore Rs.
1 Padaviya	9	4,484,363	100	5,516	1,935,000	2,491,313
2 Kebithigollewa	25	12,500,000	100	17,722	3,500,000	9,000,000
3 Medawachchiya	10	5,000,000	100	6,534	4,808,852	0
4 Rambewa	34	17,000,000	100	15,943	4,934,208	11,842,097
5 Horowpothaa	20	9,675,000	100	12,543	2,844,483	6,325,831
6 Galenbindunuwewa	26	13,000,000	100	12,541	2,500,000	10,500,000
7 Kahatagasdigiliya	19	9,500,000	100	12,806	3,919,984	5,389,978
8 N.PE	18	8,707,500	100	18,754	3,200,562	4,101,161
9 N.P.C	24	12,423,661	100	15,935	1,935,000	10,342,242
10 Mahawillachchiya	29	14,071,090	100	17,545	2,911,260	11,159,830
11 Nochchiyagama	30	15,000,000	100	19,267	6,766,424	7,541,943
12 THalawa	15	7,500,000	98	6,668	6,821,982	0
13 Thambuttegama	11	5,569,290	100	7,535	3,400,517	2,000,000
14 Galnewa	12	6,000,000	100	5,030	3,999,261	50,000
15 Ipalogama	18	8,968,725	91	7,740	7,000,225	1,403,480
16 Mihinthale	36	17,659,800	100	24,579	7,109,859	10,079,710
17 Thirappane	34	17,000,000	100	24,962	3,999,363	11,881,875
18 Kekirawa	33	15,963,750	100	47,465	6,998,058	8,311,327
19 Palugaswewa	18	9,000,000	100	20,577	2,909,912	5,797,589
20 Palagala	19	9,469,661	100	8,276	4,732,551	4,262,144
21 Nachchaduwa	17	6,720,027	100	12,316	3,875,207	2,792,159
Total	457	225,212,865	98	320,255	90,102,706	125,272,679

Road Carpeting Programme 2011/ 2012
Anuradhapura District

Abstract According to the Divisional Secretariat as at 2012.12.31

Divisional Secretariat	No. of Project	Distance as KM	Estimated Value Rs. (Million)	Expenditure Rs. (Million)			Physical Progress			Other
				2011	2012	Total	Work Not started	Work Started	Work End	
1 Kebithigollewa	1		0.00	13.89	0.00	13.89		1		
2 Medawachchiya	2	16.50	336.24	36.96	25.29	62.25		2		
3 Rambewa	3	30.50	648.80	68.32	125.62	193.94		2	1	
4 Horowpothaa	4	20.30	389.81	45.47	65.97	111.45	1	2	1	
5 Galenbindunuwewa	3	10.90	241.50	24.42	109.99	134.40		1	2	
6 Kahatagasdigiliya	2	9.40	265.04	21.06	0.00	21.06		2		
7 N.PE	6	10.40	240.47	23.30	68.10	91.40		3	3	
8 N.P.C	4	19.85	422.59	44.46	122.49	166.95	1	2	1	
9 Mahawillachchiya	3	16.00	338.25	19.04	122.92	141.96		2	1	
10 THalawa	4	37.03	1011.58	82.95	393.97	476.92		1	3	
11 Galnewa	2	17.00	418.69	38.08	133.20	171.28		2		
12 Ipalogama	2	14.20	378.74	31.81	30.67	62.48		2		
13 Mihinthale	2	12.00	307.49	26.88	8.31	35.19		2		
14 Thirappane	4	28.60	629.17	64.06	131.96	196.03		4		
15 Kekirawa	3	13.82	351.17	30.96	67.22	98.18		3		
16 Palugaswewa	1	4.20	103.21	9.41	6.17	15.58		1		
17 Palagala	1	6.00	195.89	13.44	22.18	35.62		1		
18 Nachchaduwa	2	16.85	418.71	37.74	249.37	287.11			2	
Total	49	283.55	6697.36	632.24	1683.45	2315.69	2	33	14	

**Program of Carpeting Provincial Road
Anuradhapura District**

Summary of Progress at Elocrated as at 31-12-2012

Electorates	Number of Roads	Distance	Estimated amount	Expenses Rs. (Million) + VAT			Physical progress		Number of completed	Other
				2011	2012	Total	Work not commenced	Work commenced		
1 Kalawewa	8	68.23	1809.01	152.84	557.85	710.68		5	3	
2 Medawachchiya	5	42.7	936.88	109.54	140.45	249.99		4	1	Kebithigolle.Divisional Secretariat Cancelled
3 Horoupathana	8	35.2	729.9	78.85	175.96	254.81	1	4	3	
4 Nuwargampalatha Central	5	32.5	672.37	56	211.81	267.81		3	2	
5 Mihinthale	4	28.6	629.17	64.06	131.96	196.03		4		
6 Kekirawa	5	24.02	650.28	53.8	95.57	149.38		5		
7 Anuradhapura East	14	52.3	1269.75	117.15	369.84	486.99	1	8	5	
Total	49	283.6	6,697.36	632.24	1,683.45	2,315.69	2	33	14	

Road carpetinglolugaswewa)Dayatakirula(88.04
Administration Expenses	26.84
	1,798.33

Manure Distribution on Subsidies -2012 Anuradhapura District

Divisional Secretariat	Commercial Value Rs. Million	Urea (M.T)	T.S.P (M.T)	M.O.P (M.T)
Padaviya	273.918	2298.145	707.8	600.541
Kebithigollewa	196.475	1734.05	518.85	348.4
Medawachchiya	245.612	2076.145	639.781	521.069
Rambewa	264.998	2229.923	687.809	572.835
Mahawillachchiya	142.478	1296.648	306.181	276.235
N.PE	54.214	452.25	140	121.15
N.P.C	238.063	1927.003	655.772	548.998
Kahatagasdigiliya	405.940	3401.922	1065.125	880.126
Horowpothaa	383.323	3716.62	721.363	631.445
Thirappane	156.415	1295.36	413.117	350.142
Mihinthale	99.566	828.386	258.442	223.299
Kekirawa	283.048	2270.401	778.22	671.67
Palugaswewa	80.647	669.976	213.883	178.016
THalawa	485.833	4008.806	1308.447	1079.481
Thambuttegama	303.106	2448.883	807.1	725.62
Galnewa	255.084	2085.05	695.25	576.95
Ipalogama	268.527	2238.15	709.1	588.95
Rajanganaya	195.152	1579.032	541.064	447.731
Palagala	290.220	2411.003	756.087	651.719
Nochchiyagama	333.439	2756.312	892.602	741.038
Nachchaduwa	147.668	1230.125	388.15	325.915
Galenbindunuwewa	389.540	3173.882	1051.059	898.473
welioya	83.686	712.66	199.964	187.72
Total	5576.954	46840.732	14455.166	12147.523

Conducting Awareness and Training Program Regarding Fertilizer

Year 2012 – Anuradhapura District

Program	Number of Program	Number of Beneficiaries	Expending
Awareness farmers	6	319	56,080.00
Awareness officers	4	179	38,100.00
Total	10	498	94,180.00

Pilot Programme of Propagating Production and Utilizes of Carbonic Manure

Program	Number of Program	Number of beneficiaries	Expending
Program for training and awareness	44	30000	600,000.00

Year 2012 – Anuradhapura District

Activity	Distributed Amount	Value
Distribution of equipment set	20820 sets	48,437,730.00
Distribution of grass cutter	597 machine	9,328,125.00
Providing pre ready sheet cover	200 sheet cover	7,918,000.00
Supply black polythene	17500	2,594,375.00
Total		68,278,230.00

Distribute of equipments - Year 2012

Quantity of Produced Barbaric Fertilizer	Quantity of Carbonic Fertilizer Issued for Farmers	Value of Produced Carbonic Fertilizer	Value of Distributed Carbonic Fertilizer
4778	3778	38,224,000.00	30,224,000.00

Production of Compost Year 2012

Produced Compost Quantity (M.T)	Issued Compost Quantity to the Farmers (M.T)	Value of Produced Compost Quantity (1Kg = 8 Rs.)	Value of Issued Compost Quantity (1Kg = 8 Rs.)
4778	3778	38,224,000.00	30,224,000.00

Other Field Crop

Crops	Production of the year 2012		Percentage to National Target 2012		Contribution for National Target % (2012)
	2011/12 Maha		2012 Yala		
	Extent(Hectare)	Production (M.T)	Extent(Hectare)	Production(M.T)	
Chilli	498	1,797	225	604	12%
Big Onion	969	1,897	1,784	37,154	40%
Red Onion	25	353	81	1,174,	1%
Green Gram	572	1,594	314	891	14%
Cowpea	1,027	1,681	405	5,484	31%
Groud Nut	1,931	3,473	713	2,311	17%
Black Gram	5,959	8,703	482	1,649	50%
Soya Bean	262	830	2,877	5,913	40%
Maize	25,985	118,148	4,299	22,736	43%
Gingerly	397	374	11,541	18,309	129%
Kurakkan	914	1,634	108	254	20%

Vegetable

Crops	Production of the year 2012				Percentage to National target 2012
	2011/12 Maha		2012 Yala		
	Extent (Hectare)	Production (M.T)	Extent (Hectare)	Production (M.T)	
Bean	99	832	23	200	1%
Cucumber	150	1,369	933	1,870	7%
Radish	26	377	19	382	1%
Knolkhol	19	320	27	573	4%
Long beans	549	3,980	309	2,790	8%
Okra	626	6,802	453	5,312	11%
Luffa	671	12,878	1,083	4,262	19%
Snake Gourd	345	2,030	104	1,807	4%
Bitter Gourd	499	12,757	143	251	13%
Pumpkin	2,632	39,826	972	13,017	19%
Brinjal	1,087	14,980	820	9,993	13%
Tomato	207	4,584	234	3,959	5%

Fruits

Crops	Extent has already been cultivated (M.T)
Mango	2,121
Papaw	569
Banana	2,890
Pineapple	69
Passion Fruit	19
Orange	300
Lemon	11
Avocado	2
Guava	167
Mandarin	
Pomegranate	99
Watermelon	159

Purchasing of Paddy Year 2012

Name of Institute	Hand Money Given Rs (Million)	Purchased Paddy (M.T)	Value Rs (Million)
Commissioner of Co Operative (N.C.P)	50	993	36
Paddy Marketing Board	99	3413	99
Divisional Secretariat Rajanganaya/Nochchiyagama	01	30	01
Total	150	4421.75	136

Paddy Purchasing (2012/2011–Anuradhapura District)

Name of Institute	Hand Money GivenRs.(Million)	Purchased Paddy (M.T)
Paddy Marketing Board	99	3534.38
Commissioner of Co Operative) N.C.P(50	973.38
Divisional Secretariat	01	30.55
Total	150	4538.31

Samurdhi Programm

Details of the Projects Implemented by Livelihood Circle Fund 31-12-2012

Anuradhapura District

Serial Number	Divisional Secretariat	Agro Development		Animal Husbandry and fishery		Industry		Sale and Service		Balance of circle fund after issuing loan
		Number of loan issued	Balance of the loan	Number of loan issued	Value of loan	Number of loan issued	Balance of the loan	Number of loan issued	Balance of the loan	
1	Padaviya									
2	Kebithigollewa									
3	Medhawachchiya	26	767000			3	120000	5	200000	
4	Rabewa	3	120000	3	120000	2	80000			2899763
5	Horoupathana									
6	Galenbidhunuwewa			1	40000	3	105000			3539229
7	Kahathagasdhigiliya	13	336300			2	50000			
8	Nuwaragampalatha East					5	160000	5	110000	3213924
9	Nuwaragampalatha Central									
10	Nochchiyagama									
11	Vilachchiya									
12	Thalawa									
13	Thabutthegama									
14	Rajanganaya	5	165000	1	40000	6	230000	2	80000	3752827
15	Galnewa									
16	Ipalogama									
17	Thirappane									
18	Mihinthale	3	100000			4	140000			1335292.5
19	Palugaswewa									
20	Kekirawa									
21	Palagala									
22	Nachchaduwa	5	65000	2	20000			2	25000	4695857.63
Total		55	1553300	7	220000	25	885000	14	415000	19436893

Selected Families for Providing Tiles – Rs 10000.00

Anuradhapura District

Serial Number	Divisional Secretariat	Number of families Selected tile aids	Approved amount for the purpose	Number of families Selected tile aids progress at 31.12.2012	Amount spent for provided tile aids	Balance out of provide tile aids	
						No. of House	Sum
1	Nuwaragampalatha East	100	1000000	100	1000000		
2	Nuwaragampalatha Central	111	1070000	111	1070000		
3	Vilachchiya	139	1000000	139	1000000		
4	Rabewa	205	1000000	205	1000000		
5	Medawachchiya	188	1000000	188	1000000		
6	Kebithigollewa	125	1000000	125	1000000		
7	Padhaviya	100	1000000	100	1000000		
8	Mihinthalaya	127	1000000	127	1000000		
9	Galenbidunuwewa	115	1000000	110	974250	5	25750
10	Kahathagasdigiliya	120	1000000	120	1000000		
11	Horoupathana	128	1000000	128	1000000		
12	Thalawa	107	1000000	107	1000000		
13	Tabutthegama	100	1000000	100	1000000		
14	Nochchiyagama	157	1000000	157	1000000		
15	Ipalogama	100	1000000	100	1000000		
16	Kekirawa	108	1000000	108	1000000		
17	Palugaswewa	110	1000000	110	998000		2000
18	Thirappane	114	1000000	114	1000000		
19	Palagala	111	1000000	111	1000000		
20	Galnewa	100	1000000	100	950000	5	50000
21	Rjanganaya	101	1000000	101	1000000		
22	Nachchaduwa	134	1000000	134	1000000		
Total		2700	22070000	2695	21992250	10	77750

Divi Neguma National Movement 31.12.2013

Serial Number	District	Samurdhi Section								Amount to be paid
		Activity	Implementing Agency	Approved Allocating	Target		Project Implemented	Progress		
					Fiscal	Finical		Number	Fiscal	
1	Anuradhapura	Scanty housing unit	Sri Lanka Samurdhi Adhikariya	2400000	300	2400000	19	100%	1120000	400000
2		Ornamental flower cultivating unit		2800000	70	2800000	26	100%	275000	375000
3		Bee keeping unit		1480000	740	1480000	328	100%	409000	167400
4		Cattle farm unit		15000000	600	15000000	227	100%	2980775	4906725
5		Goat management unit		750000	50	750000	50	100%	285000	425210
6		Ornamental fish unit		3600000	100	3600000	5	100%	72000	97687.48
7		Mushroom cultivating unit		7360000	736	7360000	53	100%	239965	289991
8		Making kitul toddy		250000	50	250000	1	100%	4536.5	
9		Pr..... related kitul		600000	20	600000	2	100%		9073
		Total		55840000	2666	55840000	711		5386276.5	6671086.48

Agrarian Development Programm Concurrence with Divineguma -Progress Attainment 2012

Anuradhapura District as at 2012.12.31

N o.	Divisional Secretariat	Assured Domestic						Payment to be Made	Floriculture						Payment to be Made		
		Approved Project		Provision Released		FinalizedProjec t			Approved Project		Provision Released		FinalizedProje ct				
		No.	Amount Rs.:	No.	Amount Rs.:	No.	Expenditu re Rs.		No.	Amount Rs.:	No.	Amount Rs.:	No.	Expendit ure Rs.		No.	Amount Rs.:
1	Padaviya																
2	Kebithigollewa	6	480000.00	6	480000.00	5	400000.00										
3	Medhawachchiya																
4	Rabewa																
5	Horoupathana																
6	Galenbidhunuwewa																
7	Kahathagasdhigiliya									1	25000.00	1	25000.00			1	25000.00
8	N.P.E	4	320000.00	4	320000.00	4	320000.00										
9	N.P.C	1	80000.00	1	80000.00	1	80000.00			9	225000.00	9	225000.00	9	225000.00		
10	Nochchiyagama	1	80000.00	1	80000.00	1	80000.00										
11	Vilachchiya									2	50000.00	2	50000.00	2	50000.00		
12	Thalawa									12	300000.00	12	300000.00			12	300000.00
13	Thabutthegama	1	80000.00	1	80000.00			1	80000.00	1	25000.00	1	25000.00			1	25000.00
14	Rajanganaya	2	160000.00	2	160000.00			2	160000.00								
15	Galnewa																
16	Ipalogama	1	80000.00	1	80000.00			1	80000.00								
17	Thirappane																
18	Mihinthale																
19	Palugaswewa																
20	Kekirawa	3	240000.00	3	240000.00	3	240000.00										
21	Palagala	2	160000.00	2	160000.00			1	80000.00								
22	Nachchaduwa									1	25000.00	1	25000.00			1	25000.00
Total		21	1680000.00	21	1680000.00	14	1120000.00	5	400000.00	26	650000.00	26	650000.00	11	275000.00	15	375000.00

Agrarian Development Programm Concurrence with Divineguma -Progress Attainment 2012

Anuradhapura District as at 2012.12.31

No.	Divisional Secretariat	Bee Culture						Payment to be Made		Mushroom Cultivation						Payment to be Made	
		Approved Project		Provision Released		Finalized Project				Approved Project		Provision Released		Finalized Project			
		ඊ Z	Amount Rs.:	ඊ Z	Amount Rs.:	ඊ Z	Expenditure Rs.	ඊ Z	Amount Rs.:	ඊ Z	Amount Rs.:	ඊ Z	Amount Rs.:	ඊ Z	Expenditure Rs.	ඊ Z	Amount Rs.:
1	Padaviya	7	14000.00	7	14000.00	6	12000.00			3	30000.00	3	30000.00	3	30000.00		
2	Kebithigollewa	24	48000.00	24	48000.00	23	46000.00			13	130000.00	13	130000.00	1	10000.00		
3	Medhawachchiya																
4	Rabewa	4	8000.00	4	8000.00												
5	Horoupathana	25	50000.00	25	50000.00	25	50000.00			2	20000.00	2	20000.00				
6	Galenbidhunuwewa	9	18000.00	9	18000.00			6	10000.00	3	30000.00	3	30000.00				
7	Kahathagasdhigiliya	4	8000.00	4	8000.00	4	8000.00										
8	N.P.E	15	30000.00	15	30000.00	15	30000.00			6	60000.00	6	60000.00	4	40000.00		
9	N.P.C	66	132000.00	11	22000.00	10	20000.00			2	20000.00	2	20000.00	2	20000.00		
10	Nochchiyagama																
11	Vilachchiya	23	46000.00	23	46000.00	23	46000.00			3	30000.00	3	30000.00			3	30000.00
12	Thalawa	28	56000.00	28	56000.00	28	56000.00			14	140000.00	14	140000.00			2	20000.00
13	Thabutthegama	26	52000.00	26	52000.00			26	52000.00	1	10000.00	1	10000.00				
14	Rajanganaya	18	36000.00	18	36000.00	14	28000.00	4	8000.00	1	10000.00	1	10000.00			1	10000.00
15	Galnewa	148	296000.00	11	22000.00			11	22000.00								
16	Ipalogama	2	4000.00	2	4000.00	2	4000.00			1	10000.00	1	10000.00	1	9965.00		
17	Thirappane	32	64000.00							4	40000.00	4	40000.00			4	40000.00
18	Mihinthale	7	14000.00	7	14000.00	7	14000.00										
19	Palugaswewa	26	52000.00	26	52000.00			26	49400.00								
20	Kekirawa	75	150000.00	75	150000.00	75	75000.00			12	120000.00	12	120000.00	12	120000.00		
21	Palagala	58	116000.00	10	20000.00	10	20000.00			26	260000.00	26	260000.00			18	179991.00
22	Nachchaduwa	13	26000.00	13	26000.00			13	26000.00	2	20000.00	2	20000.00	1	10000.00	1	10000.00
Totla		610	1220000.00	338	676000.00	242	409000.00	86	167400.00	93	930000.00	93	930000.00	24	239965.00	29	289991.00

Animal Husbandry Programm concurrence with Divineguma -Progress Attainment 2012

Anuradhapura District as at 2012.12.31

No.	Divisional Secretariat	Cattle Pounds Project						Payment to be Made		Goat Management						Payment to be Made	
		Approved Project		Provision Released		Finalized Project				Approved Project		Provision Released		Finalized Project			
		නි	Amount Rs.:	නි	Amount Rs.:	නි	Expenditure Rs.	නි	Amount Rs.:	නි	Amount Rs.:	නි	Amount Rs.:	නි	Expenditure Rs.	නි	Amount Rs.:
1	Padaviya	12	420000.00	12	420000.00	11	385000.00			4	60000.00	2	30000.00	2	30000.00		
2	Kebithigollewa	11	385000.00	11	385000.00	5	175000.00			4	60000.00	3	45000.00	2	30000.00		
3	Medhawachchiya	9	315000.00	5	175000.00					3	45000.00	3	45000.00				
4	Rabewa	1	35000.00	1	35000.00												
5	Horoupathana	19	665000.00	19	665000.00	19	260775.00	404225.00		11	165000.00	2	30000.00	1	15000.00		
6	Galenbidhunuwe wa	60	2100000.00	32	1120000.00			20	700000.00	5	75000.00	2	30000.00				
7	Kahathagasdhigili ya	27	905000.00	12	420000.00			7	245000.00	27	405000.00	3	45000.00			3	45000.00
8	N.P.E	7	245000.00	7	245000.00	6	210000.00			4	60000.00	4	60000.00	4	60000.00		
9	N.P.C	16	560000.00	16	560000.00	16	560000.00			37	555000.00	2	30000.00				
10	Nochchiyagama	1	35000.00	1	35000.00	1	35000.00			7	105000.00	3	45000.00	3	45000.00		
11	Vilachchiya	11	385000.00	11	385000.00			11	385000.00	15	225000.00	3	45000.00			3	45000.00
12	Thalawa	33	1155000.00	33	1155000.00			22	735000.00	16	240000.00	3	45000.00			3	44400.00
13	Thabutthegama	16	560000.00	16	560000.00			7	245000.00	5	75000.00	3	45000.00			2	30000.00
14	Rajanganaya																
15	Galnewa	28	980000.00	28	980000.00			14	472500.00	1	15000.00	1	15000.00	1	15000.00		
16	Ipalogama	5	175000.00	5	175000.00			2	65000.00	16	240000.00	14	210000.00			9	95810.00
17	Thirappane	39	1365000.00	39	1365000.00	39	585000.00		780000.00	13	195000.00	2	30000.00	2	30000.00		
18	Mihinthale	27	945000.00	10	350000.00					37	555000.00	2	30000.00	2	30000.00		
19	Palugaswewa	16	560000.00	8	280000.00			8	280000.00	9	135000.00	3	45000.00				
20	Kekirawa	22	770000.00	22	770000.00	22	770000.00			24	360000.00	2	30000.00	2	30000.00		
21	Palagala	28	980000.00	28	980000.00			11	385000.00	15	225000.00	2	30000.00			2	30000.00
22	Nachchaduwa	6	210000.00	6	210000.00			6	210000.00	14	210000.00	13	195000.00			9	135000.00
Total		394	13750000.00	322	11270000.00	119	2980775.00	108	4906725.00	267	4005000.00	72	1080000.00	19	285000.00	31	425210.00

Animal Husbandry & Fisheries Programm Concurrence with Divineguma -Progress Attainment 2012

Anuradhapura District as at 2012.12.31

No.	Divisional Secretariat	Beautiful Fish crop						Payment to be Made	
		Approved Project		Provision Released		FinalizedProject		₹	Amount Rs.:
		₹	Amount Rs.:	₹	Amount Rs.:	₹	Expenditure Rs.		
1	Padaviya	2	72000.00	2	72000.00				
2	Kebithigollewa								
3	Medhawachchiya								
4	Rabewa	4	144000.00	4	144000.00				
5	Horoupathana	1	36000.00	1	36000.00				
6	Galenbidhunuwewa	1	36000.00						
7	Kahathagasdhigiliya								
8	N.P.E								
9	N.P.C	11	396000.00	11	396000.00	2	72000.00		
10	Nochchiyagama								
11	Vilachchiya	4	144000.00	4	144000.00				
12	Thalawa	3	108000.00	3	108000.00			3	97687.48
13	Thabutthegama								
14	Rajanganaya								
15	Galnewa								
16	Ipalogama								
17	Thirappane								
18	Mihinthale	1	36000.00						
19	Palugaswewa								
20	Kekirawa								
21	Palagala								
22	Nachchaduwa	2	72000.00	1	36000.00				
Total		29	1044000.00	26	936000.00	2	72000.00	3	97687.48

Industrial Programm Concurrence with Divineguma -Progress Attainment 2012

Anuradhapura District as at 2012.12.31

No.	Divisional Secretariat	Tap the Jaggery palm						Payment to be Made		Related Production of Jaggery palm						Payment to be Made	
		Approved Project		Provision Released		Finalized Project				Approved Project		Provision Released		Finalized Project			
		No.	Amount Rs.:	No.	Amount Rs.:	No.	Expenditure Rs.	No.	Amount Rs.:	No.	Amount Rs.:	No.	Expenditure Rs.	No.	Amount Rs.:		
1	Padaviya																
2	Kebithigollewa																
3	Medhawachchiya																
4	Rabewa																
5	Horoupathana																
6	Galenbidhunuwewa																
7	Kahathagasdhigiliya																
8	N.P.E	2	10000.00	2	10000.00	1	4536.5										
9	N.P.C																
10	Nochchiyagama																
11	Vilachchiya																
12	Thalawa																
13	Thabutthegama																
14	Rajanganaya																
15	Galnewa																
16	Ipalogama																
17	Thirappane																
18	Mihinthale																
19	Palugaswewa																
20	Kekirawa																
21	Palagala																
22	Nachchaduwa									2	60000.00	2	60000.00			2	9073.00
Total		2	10000.00	2	10000.00	1	4536.5			2	60000.00	2	60000.00			2	9073.00

Appropriation Account by Programme - 2012

Expenditure Head No : 274

Programme No. &

Title :

1 Operational Activities

Summary of Recurrent and Capital Expenditure

Nature of Expenditure with DGSA format Reference	(1)	(2)	(3)	(4)	(5)	(7)	(6)	Page No. (Reference to relevant DGSA format)
	Provision in Budget Estimates	Supplementary Provision and Supplementary Estimate Allocation	Transfers in terms of the F.R. 66 and 69	Total Net Provision (1+2+3)	Total Expenditure	Net Effect Saving/(Excess) with frozen Provision (1+3±4)-6	Net Effect Saving/(Excess) (4-5)	
	Rs.	Rs.	Rs.	Rs.	Rs.	Rs.	Rs.	
(a) Recurrent (DGSA 3)	470,975,000	128,847,834		599,822,834	596,037,954		3,784,880	3
(b) Capital (DGSA 4)	61,100,000	476,600,000		537,700,000	518,429,013		19,270,987	4-5
Total	532,075,000	605,447,834		1,137,522,834	1,114,466,967		23,055,867	

Recurrent Expenditure by Project

Expenditure Head No : 274

Name of Ministry / Department / District Secretariat: District Secretariat Anuradhapura

Programme No. & Title : 1 Operational Activities

Project No/Name, personnel emoluments and other Chargers for all Projects	(1)	(2)	(3)	(4)	(5)	(6)
	Provision in Budget Estimates	Supplementary Provision and Supplementary Estimate Allocation	Transfers in terms of the F.R. 66 and 69	Total Net Provision (1+2+3)	Total Expenditure	Net Effect Saving/(Excess) (4-5)
	Rs.	Rs.	Rs.	Rs.	Rs.	Rs.
<u>Project No:1.. &Title:Genaral Administration and Establishment Service : District Secretariat</u>						
Personal Emoluments	21,550,000	106,508,605	(800,000)	127,258,605	126,716,378	542,227
Other Charges	8,775,000		550,000	9,325,000	8,736,744	588,256
Sub Total	30,325,000	106,508,605	(250,000)	136,583,605	135,453,122	1,130,483
<u>Project No:1 &Title:Genaral Administration and Establishment Service : Divisional Secretariat</u>						
Personal Emoluments	388,500,000	22,339,229	800,000	411,639,229	411,511,410	127,819
Other Charges	52,150,000		(550,000)	51,600,000	49,073,421	2,526,579
Sub Total	440,650,000	22,339,229	250,000	463,239,229	460,584,831	2,654,398
Grand Total	470,975,000	128,847,834	-	599,822,834	596,037,953	3,784,881

Capital Expenditure by Project

Expenditure Head No 274 : Name of Ministry / Department / District Secretariat: District Secretariat Anuradhapura

Programme No. & Title : 1 Operational Activities

Project No. & Title : General Administration and Establishment Service : District Secretariat

Object Code No.	Item No.	Financed by (Code No.)	Description of Items	(1)	(2)	(3)	(4)	(5)
				Provision in Annual Estimates	Transfers in terms F.R. 66 and 69 and Supplementary Provision and Supplementary Estimate Allocation	Total Net Provision (1+2)	Total Expenditure	Net Effect Saving/(Excess) (3-4)
				Rs.	Rs.	Rs.	Rs.	Rs.
			<u>Rehabitation and Improvement of Capital Assets</u>					
2001			Building & Structures	8,500,000		8,500,000	7,578,852	921,148
2002			Plant, Machinery & Equipment	750,000		750,000	652,765	97,235
2003			Vehicles	1,000,000		1,000,000	856,073	143,927
			<u>Acquisition of Capital Assets</u>					
2102			Furniture & Office Equipment	5,000,000		5,000,000	4,463,810	536,190
2103			Plant, Machinery & Equipment	1,000,000		1,000,000	883,100	116,900
2104			Building & Structures - D.S Office Rajanganaya	10,000,000				
			Building & Structures - D.S Office Nochchiyagama	10,000,000				
			Building & Structures - D.S Office N.P.E	10,000,000				
			Building & Structures - D.S Office Kahatagasdigiliya	3,000,000				
			Building & Structures (Staff Office)- D.S Office Galnewa	3,000,000		44,000,000	38,443,573	5,556,427
			Building & Structures (Staff Office) - D.S Office Palagala	3,000,000				

		Building & Structures(Quarters) - D.S Office Galenbindunuwewa	3,000,000				
		(Boundary Wall) - D.S Office Tabuththegama	800,000				
		(Boundary Wall) - D.S Office palugasweewa	600,000				
		(Vehicle Park) - D.S Office Tirappane	600,000				
2502		Other Investment		476,600,000	476,600,000	465,186,152	11,413,848
2401		Training & Capacity Building	250,000		250,000	171,188	78,812
		Total	60,500,000	476,600,000	537,100,000	518,235,513	18,864,487

Capital Expenditure by Project

Expenditure Head No 274 : Name of Ministry / Department / District Secretariat: District Secretariat Anuradhapura

Programme No. & Title : 1 Operational Activities

Project No. & Title : 2 Divisional Secretariat

Object Code No.	Item No.	Financed by (Code No.)	Description of Items	(1)	(2)	(3)	(4)	(5)
				Provision in Annual Estimates	Transfers in terms F.R. 66 and 69 and Supplementary Provision and Supplementary Estimate Allocation	Total Net Provision (1+2)	Total Expenditure	Net Effect Saving/(Excess) (3-4)
				Rs.	Rs.	Rs.	Rs.	Rs.
2401	11	-	Training & Capacity Building	600,000		600,000	193,500	406,500
			Total	600,000	0	600,000	193,500	406,500
			Grand Total	61,100,000	476,600,000	537,700,000	518,429,013	19,270,987

Summary of Financing Expenditure

(Total Recurrent and Capital Expenditure)

Expenditure Head No 274 :Name of Ministry / Department / District Secretariat: **District Secretariat Anuradhapura**

Programme No. & Title : 1 Operational Activities

Project No. & Title : General Administration and Establishment Service : District Secretariat

Financing		Programme 01*		Programme 02*		Total		Percentage of Expenditure (6/5)*100
Code	Source	Net Provision**	Actual Expenditure	Net Provision	Actual Expenditure	Net Provision	Actual Expenditure	
		1	2	3	4	5	6	
		Rs.	Rs.	Rs.	Rs.	Rs.	Rs.	
11	Domestic Funds	1,137,522,834	1,114,466,967			1,137,522,834	1,114,466,967	98
12	Foreign Aid - Loan							
13	Foreign Aid - Grant							
14	Reimbursable Foreign Aid - Loan							
15	Reimbursable Foreign Aid - Grant							
16	Counterpart Fund							
17	Foreign Aid related Domestic Funds							
21	Special law services							
	Total	1,137,522,834	1,114,466,967	0	0	1,137,522,834	1,114,466,967	98

Financing of Expenditure

(Total Capital and Recurrent Expenditure According to Projects of a Programme)

Expenditure Head No274 : Name of Ministry / Department / District Secretariat: District Secretariat Anuradhapura

Programme No. & Title : 1 Operational Activities

Project No. & Title : General Administration and Establishment Service : District Secretariat

Financing		Project 01		Project 02		Programme Total/Page Total	
Code	Source	Net Provision	Actual Expenditure	Net Provision	Actual Expenditure	Net Provision	Actual Expenditure
		Rs.	Rs.	Rs.	Rs.	Rs.	Rs.
11	Domestic Funds	673,683,605	653,688,635	463,839,229	460,778,332	1,137,522,834	1,114,466,967
12	Foreign Aid - Loan						
13	Foreign Aid - Grant						
14	Reimbursable Foreign Aid - Loan						
15	Reimbursable Foreign Aid - Grant						
16	Counterpart Fund						
17	Foreign Aid related Domestic Funds						
21	Special law Services						
	Total	673,683,605	653,688,635	463,839,229	460,778,332	1,137,522,834	1,114,466,967

Note (ii)

Summary of Control Accounts for Advance & Deposit Accounts - 2012

Name of Ministry / Department / District Secretariat: District Secretariat

Expenditure Head No : 274 Anuradhapura

Account No. & Name	Account No.	As Per Department Books				Balance as per Treasury Accounts as at 31/12/2012
		Opening Balance as at 01/01/2012	Debits during the year	Credits during the year	Balance as at 31/12/2012	
		Rs.	Rs.	Rs.	Rs.	
I. Advances to Public Officers	27,401	175,144,361.77	46,558,642.19	62,660,295.73	159,042,708.23	159,042,708.23
II. Other Advances						
III. Miscellaneous Advances						
IV. Deposit Accounts						
(i) General Deposits	6003/0/0/50/0	124,327,534.62	460,697,639.22	595,879,483.28	259,509,378.68	259,509,378.68
(ii) Other Deposits						