

கார்டீசு சாடன னா ழீசுரீ லார்கால -2018  
செயற்பாட்டு ஡ற்றும் கணக்கு அறிக்கை -2018  
Performance and Accounts Report-2018

ழீரீசு  
Head } 278  
தலைப்பு }



ழீசுரீசு லீகரீ கார்டீசுரீசு- ரந்நாபுர  
஡ாவட்ட செயலகம் - ழிரத்தினபுரி  
District Secretariat-Rathnapura

# Table of Content

<b>S. No.</b>		<b>Page No.</b>
<b>Chapter One</b>		
1	Introduction, Vision, Mission and major Functions	5
2	Ratnapura District and Geographical Background	6-11
3	OrganiZation Chart	12
4	Approved Cadre	13
5	Performance 2018	14-16
<b>Chapter Two</b>		
<b>Social Development</b>		
1	General Administration, Social and cultural Activities	17-18
2	Performance indices	19
	2.1 Internal Audit Programme	
	2.2 Surveys and Census	
	2.3 Information on Receipt of Revenue	
	2.4 Transport Division	
<b>Economic Development</b>		
1	District development 2018	43
2	Progress of Projects Implemented in Year 2018 for Achieving the Performance	43-72
<b>Livelyhood Development</b>		
1	Progress of Projects Implemented in Year 2018 for Achieving the Performance	73-80
	<b>* Effective Programmes</b>	81-83
<b>Chapter Three</b>		
1	Expenditure under Line Ministries and Departments	85
2	Oustanding List	86
3	Final Accounts 2018	87-96

**End**

## Message from District Secretary/Government Agent

### Towards prosperity through good governance .....



I have great pleasure to convey this message in the event of presenting the performance and Accounts Report of the District Secretariat, Ratnapura for the year 2018. Ratnapura, being the capital city of the Sabaragamuwa Province, has secured a unique place in terrestrial, economic, social, cultural and historical aspects. District Secretariat is the Civil Administrative Headquarters of Ratnapura District which has 327,540 hectares in extent. The population of the district is 1,151,451 representing 5.56% of total population in Sri Lanka. Out of the population in ratnapura district, 9.14% live in urban area while 81.69% of the district population live in rural area and 9.16% live in estates. Agriculture and mining industry are the major livelihood of the people live in the district which is comprised of 17 Divisional Secretary's Divisions. My foremost aspiration is to take actions to fulfill the economic, social, cultural and spiritual needs of urban, rural and estate population and to take necessary measures to enhance their standard of living through solving their problems.

It should be stated that the Public Services rendered during 2014-2018 were able to achieve an successful improvement in every sector and to minimize poverty level and enhance the standard of living, resuming continuous projects predominating public policies for development commenced during 2014/2018 period, implementation of decentralized budget programme, Rural Infrastructure Facilities Development Programme, "Punarudaya" National Environmental Programme and Multi-sectoral Plan for Nutrition-progress Review, Grama Shakthi Programme, Sinharaja Project were successfully implemented. Gamperaliya Programme also was implemented in a productive manner at the end of the year 2018, in view of the development of the district. Furthermore, it is pleased to mention that we were able to launch a number of national programmes in year 2018, so as to cover all the Divisional Secretariats, such as Livelihood Development Programme, Housing Lottery Programme, Diriya Piyasa Housing Scheme, Development Programme on happy family through prevention of drugs and tobacco, Model Village Programme, Programme for Generating Estate Associated Jobs and Natioanl Food Production Campaign.

There were significant features in the field of financial Management such as proper maintainance of accounts, launching internal audit process and making replies to 17 audit queries made by the Auditor General in year 2018 under the supervision of the Chief Auditing Officer, as well as conducting Board of Survey and submitting appropriate reports as scheduled. Steps were taken to eradicate dissatisfaction of the people towards the Public Service by supervising all sections through conducting monthly progress review meetings as to cover all Divisional Secretariats and the District Secretariat and further streanthened Public Petitions Investigation Committees. 800 petitions received to this office and 562 petitions were resolved. According to averall comparison with year 2017, there was a minor flood in 2018 and it was a year with least number of sudden disasters. In addition to implementing a number of new programmes covering economic, social and cultural aspects stretched out at national and regional levels, for the sake of the Gneral Public we were able to contribute in fulfilling development goals of the government by fighting off the challenges through completing continueous liabilities coming along year 2017 and before.

I take this opportunity to pay my heartiest gratitude, on behalf of people in Ratnapura District, to all the officers including my staff for their utmost contribution as there is a timely need all citizens to perform their duties effectively.

**Malani Lokupothagama,  
District Secretary/ Government Agent,  
Administrative District of Ratnapura.**

## CHAPTER ONE

---

## **Introduction**

### **Vision**

Prosperity through good governance

### **Mission**

To raise the living standard of the people in Ratnapura District by implementing government policies and programme effectively through Divisional Secretariats and other government institutions with the active participation of private sector and non-government sector

### **Major Functions**

- Coordination of Government tasks.
- Performing duties bestowed by law through officers at village level and divisional level and also through organizations.
- Performing as a representative of other Ministries and Departments.
- Collecting revenues pertaining to different heads.
- Implementing programmes of the decentralized budget.
- Assisting Provincial Councils in their operations
- Playing major role in organizing national and district level cultural, religious and other state ceremonies
- Function as a representative to the Election Commission in the event of all elections
- Planning, organizing, implementing and supervising district development through conducting committees on District Coordination, Agriculture, Environment, Nutrition, Eradication of Dengue and Housing.
- Supervising the administration of 17 Divisional Secretariats and 575 Grama Niladari Offices.
- Collecting revenue, recording in accounts, remitting to the Treasury and reporting to relevant Revenue Accounting Officers regarding revenue on behalf of such Revenue Accounting Officers in various Ministries and Departments.
- Coordinating each Department as to fulfill their goals, Objectives and functions being a representative to all Ministries and Departments in the district
- Organizing, implementing, supervising, following up and stabilizing the disaster management activities being the Government agent in case of extensive natural disasters such as drought, flood, cyclone and landslide.
- Coordinating registration of lands, registration and issue of copies of certificates of births, marriages and deaths within the District.
- Coordinating pensions programme in the District
- Functioning as a productive responding authority for public grievances including “Tell the President”
- Functioning as a public authority which enforce the provisions of Right to Information Act.

## ➤ Ratnapura District

The location of Ratnapura District to the South West of Sri Lanka makes a great historical and geographical effect on the existence of the people and economic development in the district. Ratnapura District is situated between 6° and 7° Latitude North and between 80° and 81° Longitude-East and has an extent of 3,275.4 km<sup>2</sup>. It is bounded by Kegalle and Nuwaraeliya Districts to the North, Galle, Matara and Hambanthota Districts to the South, Colombo and Kalutara Districts to the West and Badulla and Moneragala Districts to the East.

According to the archeological facts discovered so far, fossilized bones of the most ancient man, the Balangoda Homo Sapiens have been discovered in the places such as Batadombalena, and Bellanbendipelessa located in Ratnapura District. The stone inscriptions in which the letters were related to those in the Anuradhapura era have been found in these areas as well and the other ancient ruins in Embilipitiya and Kaltota areas speak of the historical value of Ratnapura District. It is evident that Ratnapura District had been divided into 6 Korales during the Kandyan era, namely, Kuruwiti, Nawadun, Atakalan, Kukulu, Kadawathmeda and Kolonna. The flag of the district of Ratnapura is yellowish pearl in colour. The flag which is derived from the ancient Sabaragamuwa flag, has a picturesque red frame and yellowish background. the yellowish colour is dedicated to God Saman - the guardian of the 'Samanthakuta'.

Sri Pada is the most sacred place in the district. The pilgrimage season, commencing from the Unduwap full moon poya day of the year lasts until the Vesak full moon poya day of the next year. A Large Number of pilgrims from all over the island trek this peak to worship the sacred Footprint of the Lord Buddha. The Saman Devalaya in Ratnapura is an another sacred place of historical importance. The annual procession held from the month of July to August is known as the grandest cultural display in Sabaragamuwa. In addition, there are a number of places of importance, such as Delgamuwa Raja Maha Viharaya, Pothgul Raja Maha Viharaya, Aluthnuwara Devalaya and Sankhapala Raja Maha Viharaya situated in Ratnapura District.

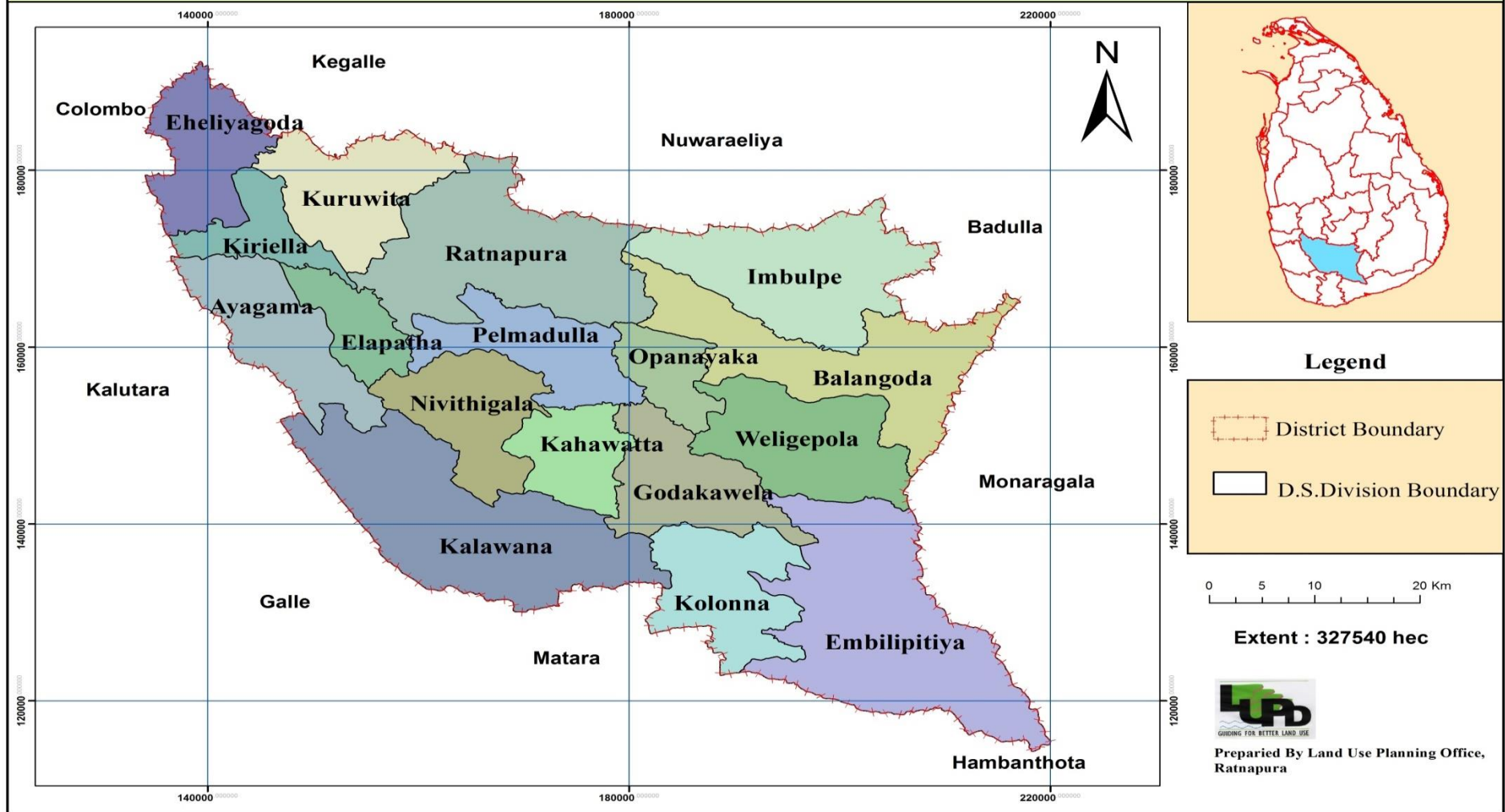
The geographical features of the Northern part of the district elevates from 88m to 2243 m above sea level. it creates the Southern platform of the Central hills. The Samanala Kanda which is situated on this Southern platform is 2,237.3 m high. The average annual temperature is 27.5° C and annual rainfall is 3,749.1 mm. Two of main rivers Kalu and Walawe flow across the district. Some peculiar features of the physical environment can be seen as an effect of the climatic situations as it located in the South-West Wet Zone. Suriyakanda area situated in Kolonna region has a cold climate in contrast, Embilipitiya, Weligepola and Imbulpe cast climatic features in the dry zone. Most parts of the district receive rain from south-west monsoons causing the threat of flood as the river Kalu overflows several times a year due to continuous rain.

Almost all area in the district is cultivated with paddy using rain water as well as water supplied through irrigation systems which consists with major irrigation systems such as Kaltota and Panamura and streminor irrigation systems speaded over the district. 25% of the

land has been utilized for economic cultivation. Increase of the number of tea small holders was significant in par with increase in price of tea leaves. Nearly 50,000 persons in Ratnapura District, out of 260,000 tea small holders scattered over the island, expanded over an area nearly 18,000 hectares in extent. 64.8% of employable men and 31.2% of women are employed in various occupations. The most extended mineral is various kind of gems which have higher economic values.

Gemming is done in large scale in the Divisional Secretary's Divisions of Ratnapura, Eheliyagoda, Nivithigala, Kahawatta, Balangoda, Kuruwita and Ayagama. Graphite deposits are found in several places in the Divisional Secretary's Divisions of Ayagama, Kalawana and Kuruwita. Iron ore also can be found along Dela to Balangoda via Kahawatta. There are Calcite diposits which are used for ceramic industry in Kirimetithenna area in Balangoda, nevertheless they are not highy been used for that purpose.

# Relative & Absolute Location - Ratnapura District



❖ Land Features of Ratnapura District

Nature of Lands	Extent(Hectares)	Percentage(%)
Total area	321,312.1	98.1
Extent of inland reservoir	6,227.9	1.9
<b>Total land extent</b>	<b>327,540.0</b>	<b>100.0</b>
Total extent of cultivated lands	205,117.0	62.5
Total extent of non-cultivated lands	43,081.0	13.5
Total extent of forests	79,236.8	24.0
<b>Total land extent</b>	<b>327,434.80</b>	<b>100.0</b>

❖ Land Use Pattern in the District

Nature of the Land	Extent(Hectares)
<b>Paddy lands</b>	<b>19,435.60</b>
1.Irrigation	14,796.20
2.Rain fed	4,639.40
Tea	48,533.50
Rubber	38,853.10
Coconut	6,338.50
Cinnamon	71,486.00
Other crops	18,741.60
<b>Forests</b>	<b>79,236.80</b>
1.Dense forests	60,295.10
2.Open forests	14,427.60
3.Cultivated forests	4,514.10
Grass lands and chena	31,104.70
Home gardens	71,639.50
Marshy	134.40
Reservoirs	3,464.20
Barren lands and abandoned lands	2,368.40
Other lands (Community,Road,Cemetary)	1,640.00
Buildup Lands	1,638.20
Rock-strewn	3,433.40
Other water boddies	2,763.80
Other	510.20
<b>Total</b>	<b>401,321.90</b>

❖ People's Representation - Ratnapura District

Representative Authority	Number of Members
Parliament	10
Provincial Council	27
Municipal Council 1	15
Urban Council 2	16
Pradeshiya Saba 14	198

Divisional Secretariats	17
Grama Niladari Divisions	575
Villages	1,941
Local Government Authorities	
Municipal Councils	1
Urban Councils	2
Pradeshiya Sabas	14

❖ Population -2018

S.No.	Divisional Secretariat	Total extent (ha.)	No. of Grama Niladari Divisions	No. of Villages	Population
1	Ratnapura	32,400	53	160	127,222
2	Elapatha	8,200	20	68	40,060
3	Kuruwita	17,400	39	85	101,223
4	Eheliyagoda	14,100	44	96	74,970
5	Ayagama	16,500	21	67	32,695
6	Pelmadulla	14,600	37	111	94,686
7	Opanayake	8,000	20	119	28,137
8	Embilipitiya	38,800	40	107	142,568
9	Kolonna	17,600	29	123	48,634
10	Kahawatta	10,300	29	54	45,823
11	Nivithigala	15,600	24	82	63,636
12	Godakawela	15,500	44	62	80,928
13	Kalawana	37,900	33	125	54,299
14	Weligepola	19,800	30	138	32,790
15	Imbulpe	25,600	50	252	62,945
16	Balangoda	27,100	53	259	86,319
17	Kiriella	8,100	17	35	34,515
<b>Total</b>		<b>327,500</b>	<b>575</b>	<b>1941</b>	<b>1,151,450</b>

❖ Number of Voters at Electoral Districtwise -2018

Electoral District	Population			No. of Voters
	Total	Male	Female	
Eheliyagoda	136,292	67,221	69,071	136,292
Ratnapura	95,504	47,747	47,757	95,504
Pelmadulla	150,711	73,145	77,566	150,711
Balangoda	143,302	71,081	72,221	143,302
Rakwana	193,054	95,167	97,887	193,054
Nivithigala	143,229	70,317	72,912	143,229
Kalawana	175,668	86,748	88,920	175,668
Kolonna	124,847	61,754	63,093	124,847
<b>Total</b>	<b>1,162,607</b>	<b>567,680</b>	<b>583,771</b>	<b>1,162,607</b>

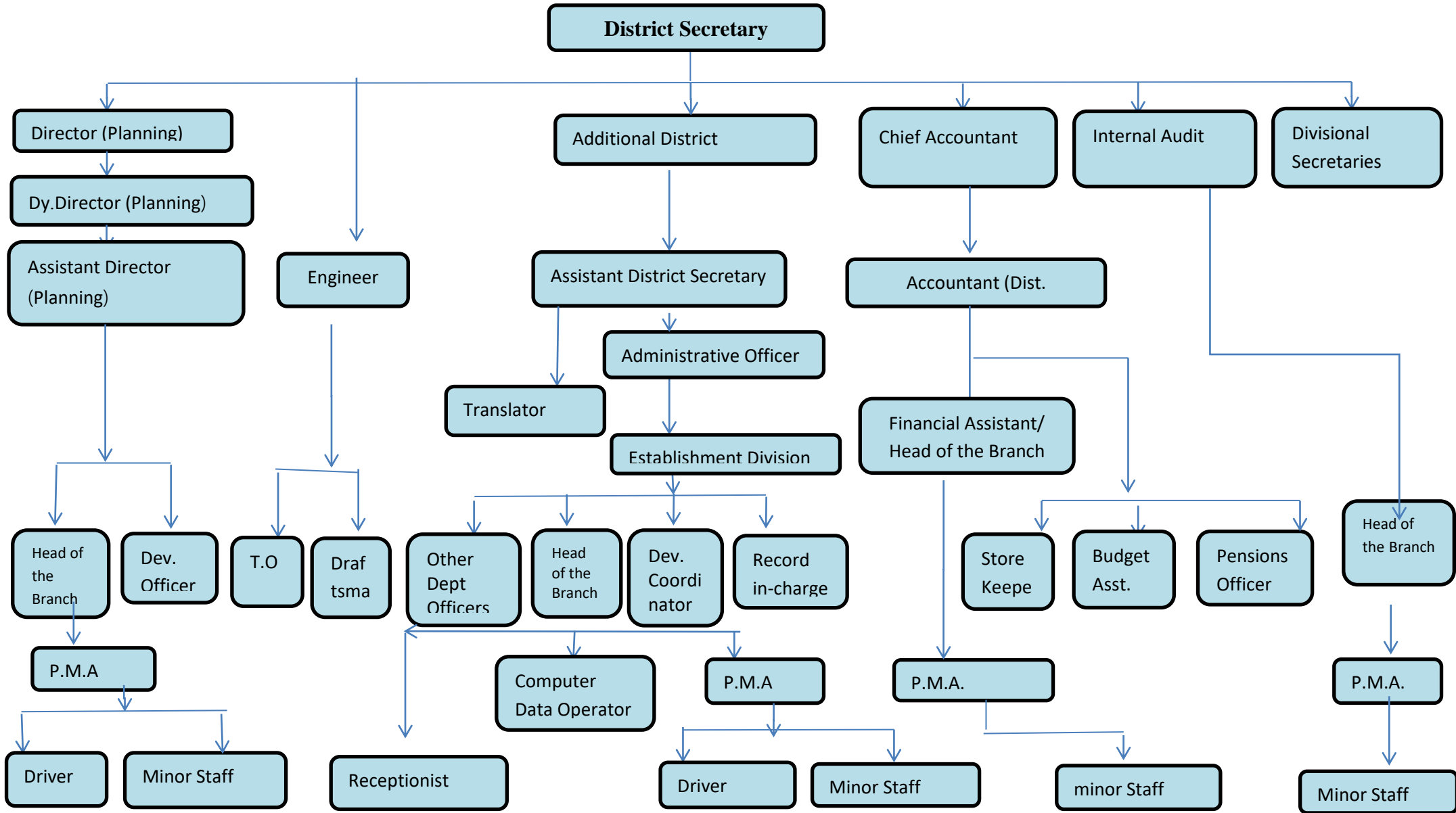
Source: Statistics Division –District Secretary, Rathnapura  
 (\*Only above Trabular base on 2018 figuers)

❖ School Education-2018

Educational Zones	04
Educational Divisions	14
Number of Schools	598

Type of School	No. of School	No. of Teachers	No. of students
<b>National Schools</b>			
1 AB Schools	14	1,733	37,086
<b>Provincial Schools</b>			
1 AB Schools	44	2,447	43,507
1 C Schools	88	2,940	52,091
Grade 2 Schools	253	4,318	55,349
Grade 3 Schools	199	1,689	34,967
<b>Total</b>	<b>598</b>	<b>13,127</b>	<b>223,000</b>

# Organization Chart



**❖ Cadre Information**

Category	No. of Approved Cadre	Existing Cadre	No. of Vacant/Excess
Senior Level	80	66	14
Tertiary Level	43	26	17
Secondary Level	2,011	1,883	128
Primary Level	210	190	20
Other (Casual/Temporary/Contract)	0	0	0
<b>Total</b>	<b>2,344</b>	<b>2,165</b>	<b>179</b>

\* According to new cadre approved by the Department of Management Services from 20.10.2017.

**District Secretary-Rathnapura & Divisional Secretariats  
Cadre Information as at 2018.12.31**

S/No	Designation	Service	Approved Cadre	Actual	Vacant
1	District Secretary	SLAS	1	1	-
2	Additional District Secretary	SLAS	2	2	-
	Director(Planning)	SLPS	1	1	-
3	Chief Accountant	SLAcS	1	1	-
4	Chief Internal Auditor	SLAcS	1	1	-
5	Divisional Secretary	SLAS	17	16	1
6	Assistant District Secretary	SLAS	1	1	-
7	District Engineer	SLEngS	1	1	-
8	Assistant Divisional Secretary	SLAS	17	12	5
9	Accountant	SLAcS	18	14	4
10	Ass./Dep. Director(Planning)	SLPS	20	16	4
11	Assistant Director(Planning)	Supernumerary	-	11	-
	<b>Senior Level</b>		<b>80</b>	<b>77</b>	<b>14</b>
10	Administration Officer	PMAS	18	15	3
11	Administration Grama Niladari		17	9	8
12	Translation	TS	8	2	6
	<b>Tertiary Level</b>		<b>43</b>	<b>26</b>	<b>17</b>
21	Information Technology assistant	SLICTS	1	-	1
13	Development co-coordinator	AS	17	17	-
	development Fielding assistant	AS	26	23	3
	Development Assistant	AS	4	7	(3)
14	Budget Assistant	AS	2	1	1
	Development Officer (old)	AS	8	11	(3)
15	Development Officer	DOS	829	781	48
16	Technician Officer	SLTS	36	16	20
17	Draftsman	SLTS	1	-	1
18	Government Management Assistant	PMAS	455	465	(10)
19	Grama Niladari		575	534	41
20	Reception	Departmental	2	-	2
22	Information Technology and media assistant	SLICTS	19	9	10
23	Technology Assistant	Departmental	36	19	17
	<b>Secondary Level</b>		<b>2,011</b>	<b>1,883</b>	<b>128</b>
24	Driver	CDS	44	42	2
25	K.K.S	OES	139	146	(7)
26	Electrician/	Departmental	1	-	1
27	Archie	Departmental	1	-	1
28	K.K.S	Departmental	7	-	7
29	Labor	Departmental	2	-	2
30	voucher	Departmental	16	2	14
	<b>Primary Level</b>		<b>210</b>	<b>190</b>	<b>20</b>
	<b>Total</b>		<b>2,344</b>	<b>2,176</b>	<b>179</b>

## Performance 2018

Divisional Secretariats of Ratnapura District, with the participation of other government and non-government organizations have initiated a number of programmes targeting economic, social and cultural development in the district.

Programmes and projects were implemented in accordance with the state policies planned as to meet private and common needs of district population amounting approximately 1,151,141. As programmes should be initiated towards social, cultural and economic development, so as to implement the State Concept of poverty alleviation in parallel with previous years and to achieve sustainable development goals by year 2030, required infrastructure facilities should be provided. In such view, all the development activities have to be performed at grass root level including raising awareness among school children and community organizations.

- **Social, cultural and religious development** – Uplifting disabled persons, providing disaster relief services, organizing programmes on child care and Buddhism, Hinduism and Islamic religious renaissance with the objective of achieving social and cultural development. Accelerate programmes such as issuing National Identity Cards, Grama Niladhari Certificates, registration of Births/ Marriages/ Deaths, granting Land Permits and Deeds as well as housing aid programmes and vocational training programmes were implemented under General Administration. Awareness programmes on disasters, rehearsal and security programmes were implemented. National programmes on strengthening Rural Cultural Board Fund and National Day Celebration and cultural programmes such as Awakening blissful thoughts in children's minds (for school children) are in progress.
- **Economic development** – Implementation of continued projects in 2014-2016, Decentralized Budget Programme, Development of rural infrastructure facilities, 'Punarudaya' national environmental programme, and implementation of progress review multi sectoral plan were among the most prominent programmes. Financial allocations were received from the Line Ministries and Presidential Secretariat for development purpose of the district and a number of development programmes were implemented under such allocations. In addition, 1963 projects were initiated to rehabilitate roads school buildings and minor irrigations in the district which were damaged due to flood and landslides. 95% of the total provisions aggregating Rs.2,553.2 million utilised in projects and completed 95% of the work.
- **Livelihood development-** Housing Lottery Programme, Diriya Piyasa Housing Scheme, Happy Family Development through Prevention of Drugs and Cigarettes, Model Village Project, Generating jobs in Estate sector were implemented in line with Divineguma programme to alleviate poverty in the district.
- The final phase of construction of new building complex of District Secretariat is being successfully finished as it acquired a 98% progress.
- Dissatisfaction towards the Public Service was eliminated by further strengthening of the Public Petition Investigation Committee. Actions were taken to resolve and to call reports from Divisional Secretariats relevant to 562 petitions out of 800 received in 2018. Appropriate steps were taken to maintain a proper and efficient office system by conducting progress review meetings and by guiding to resolve the problems of the people so as to cover 17 Divisional Secretariats governed under the District Secretariat

- 17 audit queries were received from the Auditor General during the year 2018 and replies were submitted for all the queries within the same year. The internal audit programme was successfully launched under the direction of the chief Internal Auditor.
- Inspection of Grama Niladaris
- Accounting of revenue
- Motor traffic division

Accordingly, performance for year 2018 was achieved through a number of stages as précised in Chapter two.

## CHAPTER TWO

---

➤ General Administration, Social and Cultural

❖ Number of National Identity Cards and Grama Niladari Certificates issued in 2018

S. No.	Divisional Secretariat	No of National Identity Cards	No. of Grama Niladari Certificates
1	Ratnapura	4,560	19,300
2	Elapatha	1,405	4,409
3	Kuruwita	3,030	11,946
4	Eheliyagoda	2,603	9,416
5	Ayagama	977	3,984
6	Pelmadulla	2,942	11,467
7	Opanayake	958	4,714
8	Embilipitiya	4,402	17,300
9	Kolonna	1,272	3,435
10	Kahawatta	1,796	4,829
11	Nivithigala	1,544	7,495
12	Godakawela	2,684	0
13	Kalawana	1,562	4,071
14	WEligepola	1,142	4,310
15	Imbulpe	1,642	7,400
16	Balangoda	2,513	16,000
17	Kiriella	886	4,786
	<b>Total</b>	<b>35,918</b>	<b>134,862</b>

❖ Registration of Births/Marriages/Deaths

Divisional Secretariat	Births		Marriages		Deaths	
	No. of Registered Births	No. of copies of Birth Certificates issued	No. of registered Marriages	No. of copies of Marriage Certificates issued	No. of Registered Deaths	No of copies of Death Certificates issued
Ratnapura	8,200	68,226	900	1,877	2,035	4,582
Elapatha	0	3,624	290	853	108	528
Kuruwita	2	3,352	871	2,462	352	552
Eheliyagoda	6	5,050	383	1,066	403	203
Ayagama	8	2,469	151	405	134	169
Pelmadulla	5	6666	302	1266	301	486
Opanayake	0	2,739	7	358	12	172
Embilipitiya	5,136	35,879	995	4,218	1065	2,100
Kolonna	8	7,149	331	945	227	224
Kahawatta	1,559	11,794	559	815	475	451
Nivithigala	7	7,413	446	839	244	299
Godakawela	45	9,559	532	1,511	320	439
Kalawana	57	5,588	349	528	216	251
WEligepola	7	2,872	262	475	116	78
Imbulpe	2,193	18,202	515	1023	603	277
Balangoda	13	11853	562	1,312	273	218
Kiriella	4	3,977	139	483	106	168
<b>Total</b>	<b>17,250</b>	<b>206,412</b>	<b>7,594</b>	<b>20,436</b>	<b>6,990</b>	<b>11,197</b>

❖ Land Permits and Deeds

Divisional Secretariat	Total extent of lands	No. of Land permits issued	No. of Deeds issued	No. of copies of Deeds
Ratnapura	319	153	6	0
Elapatha	8696	8	19	0
Kuruwita	173	103	9	0
Eheliyagoda	14,309	63	65	10
Ayagama	151	104	4	5
Pelmadulla	6,032	63	116	0
Opanayake	7464	25	0	0
Embilipitiya	406	850	0	0
Kolonna	7.53	309	0	0
Kahawatta	10205	49	3	0
Nivithigala	11.6003	87	4	0
Godakawela	2534	91	3	0
Kalawana	80	165	40	0
WEligepola	20,209.99	262	48	0
Imbulpe	23140	331	0	0
Balangoda	68,881	170	89	0
Kiriella	8,100	67	0	0
<b>Total</b>	<b>70,719.1203</b>	<b>2,900</b>	<b>406</b>	<b>15</b>

## ➤ Internal Audit Division

### ❖ Internal Audit Division – District Secretariat, Ratnapura

#### Detailed Report on the progress of functions performed and rendered services in year 2018

01. Internal Audit check of District Secretariat Office
02. Internal Audit Check of Divisional Secretariat Offices
03. Inspection of Grama Niladari Offices
04. Inspections and Investigations
05. Conducting District Audit and Management Committee
06. Issuing Internal Audit instructions
07. Analysis of reports and solving problems

#### **01. Internal Audit Check of District Secretariat Office**

Internal audit check over Small Enterprises Division at District Secretariat and conducting an audit on charging rents for government quarters

#### **02. Internal Audit Check in Divisional Secretariat Office**

Inspecting and submitting audit queries to

- Establishment Division
- Accounts Division
- Planning Division
- Field Officers' Division
- Land Division

of all 17 offices of the 17 Divisional Secretary's Divisions, hence such offices have trend to minimize their defects and to sought solutions for special matters from the District Audit Management Committee.

#### **03. Inspection of Grama Niladari Offices**

With the objective of taking necessary actions to fulfill public needs through strengthening rural administration, 49 GN offices belong to Pelmadulla, Balangoda, Weligepola, Embilipitiya and Opanayake Divisions were inspected in year 2018.

#### **04. Inspections and Investigations**

02 investigations were concluded in year 2018 regarding various matters including public petitions.

#### **05. Conducting District Audit and Management Committee**

04 meetings are being conducted in a year as one meeting per quarter and accordingly, meetings were conducted on 05.03.2018, 15.05.2018, 23.08.2018 and on 15.11.2018 for 1 to 4 quarters respectively. Problems connected with damages, General Deposits Account, other miscellaneous accounts and issues on Establishment affairs and projects etc. as well as problems regarding General and Internal Audit which had been unsolved for a long period were given effective solutions and guidance for various programmes were also provided.

#### **06. Issuing Internal Audit Instructions**

Internal Audit Instructions are issued related to problems arisen in connection with performing official duties effectively and efficiently whilst, 02 internal instructions were issued in 2018, i.e.

01. Internal Audit Instructions bearing No. 01/2018 and date 10.07.2018 with regard to systematic maintenance of Grama Niladari Offices drawing attention to instructions, Rules and Regulations and guidance to provide an efficient and effective service as they provide a great extent of public services.

02. Instructions issued on 08.10.2018 to all Divisional Secretaries regarding custody, storing and destroying of official documents in Divisional Secretariats.

#### **07. Report Analysis and Solving Problems, if any.**

Analysis and check the standard of :

01. Minutes of Regional Audit Committees
02. Quarterly reports of Cost of Vehicles
03. Bank Reconciliations

submitted by Divisional Secretariats and actions have been taken to recommend solutions for the problems arisen by the above report.

- Further details of work performed pertaining to District Secretariats and Divisional Secretariats are included in Annexes 01 and 02.

Annex-1 -01 Internal Audit Checks in District Secretariat			3		
1. Audit conducted on Small Enterprises Division Audit on recovering rent of Government Quarters					
2					
S.No.	Office	Internal Audit Checks in Divisional Secretariats		Inspection of GN Offices	
		Details of Audit Checks		No of Offices	Details of Audit Checks
1	Eheliyagoda	Security Register, issuing ad-hoc interim imprest, checking pay ledgers and leave registers, Bank Reconciliation, procurement, Deposit Register, Pensions, Right to Information Act, issuing timber permits, issuing permits for transport animals, Railway warrants, permits for excavation and transport of sand, soil and gravel, excise license, Registration of Business Names, issue of pawning license, cadre information, Advanced Programmes, checking files regarding inspection of GN offices, Assets Management Process, inspection of the subject of 'Lands', Electronic National Identity Card project, inspection of Field Officers' Division, non-payment of retention money.		-	-
2	Kuruwita	General Deposit, issuing timber permits, excavation and transport permits for sand, soil and gravel and animal transport, issue of pawning licenses, Providing motor bicycles among Field Officers on concessionary basis, inspection of Field Officers Division, annual rentals of Land Division, annual tax assessments and revisions, long-term lease, administration of survey plans, conducting Land Kachcheri, road and land disputes.		-	-

3	Ratnapura	General Deposit Account, Ad-hoc interim imprest register, Bank reconciliation, procurement, Advance 'B' Account, assets management, cadre information, inspection of subject of 'vehicles', excavation and transport license for sand, soil and gravel, pawning license, issuing timber permits, issuing license for animal transport, Registration of Business Names, Electronic National Identity Card Project, programme on Kitul development. Right to Information Act, inspection of field Officers, annual licenses, conducting land kachcheris, road and land disputes	-	-
4	Ayagama	Checking Bank Reconciliation, General Deposit Register, procurement, providing motor bicycles among Field Officers on concessionary basis, checking vote ledger, inspection of vehicles, inspection of stores, Security Register, Electronic National Identity Card Project, Right to Information Act, issuing timber permits, inspection of Register for issuing and receiving of timber seals, Registration of Business Names, Register of public complaints, Register of Railway Warrants, permit for transport animals, issuing license for excavation and transportation of sand, soil, gravels for non-commercial purposes, issuing pawning license, excise license, checking files on inspection of GN offices, inspection of Advanced programmes and performed programmes, false replies for audit queries, annual licenses, conducting land kachcheri, levies for diverting water, land disputes.	-	-
5	Kalawana	Issuing permits for cutting and transport of wood, pawning license, revenue license for vehicles, checking reports on inspection of GN offices, excise license, Registration of Business Names, catalogue of books, bank reconciliation, register of ad-hoc interim imprest, inspection of Vote Ledger, cadre information, Right to Information Act, Electronic National Identity Card Project, Poverty Alleviation Programme-2017, Assets Management Process, daily banking of money, programme on Rural Economic Promotion, special programme for development of infrastructure facilities, procurement process, inspection of vehicles, training programmes, Regional Audit and Management Committee, General Deposit Account, Inspection of Field Division, audit check of Women's Affairs Organizations, control account on outstanding tax, tax revisions, extension of annual permits, Conducting land kachcheri, Administration of Acquisitions and survey plans, levies for diverting water, conservation of water sources.	-	-

6	Nivithigala	General Deposit Register, issuing timber permits, Registration of Business Names, permis for transport of animals, issuing permits for excavation and transport of sand, soil, gravels for non-commercial purposes, undertaking pawning centres without valid license, railway warrant, excise license, asset management, checking files on inspection of GN offices, Security Register, Register of ad-hoc interim imprest, Electronic National Identity Card Project, Right to Information Act, checking pay ledgers, non-payment of retention money, cadre information, bank reconciliation, National Programme for Protection of Environment, Rural Infrastructure Development Programme-2017, inspection of daily running charts of vehicles, Inspection of Field Officers' Division, Action plan, annual permits, annual tax revisions, encroachments, Administration of survey plans, conducting land kachcheri, land disputes.	-	-
7	Elapatha	Register of ad-hoc interim imprest, providing motor bicycles among Field Officers on concessionary basis, Electronic National Identity Card project, cadre information, Right to Information Act, asset management, non-payment of retention money, issuing timber permits, issuing permits for excavation and transport of sand, soil, gravels for non-commercial purposes, pawning license, Registration of Business Names, inspection of Field Officers' Division, Control Account for Outstanding Tax, tax index, tax revisions, levies for diverting water, administration of survey plans, encroachments, conducting land kachcheri, road and land disputes, conservation of water sources.	-	-
8	Pelmadulla	General Deposit Register, advanced programme, procurement, issuing timber permits, inspection of Register for issuing and receiving of timber seals, inspection of the Register of Pensioners' Railway Warrants, animal transport permits, issuing pawning license, excise license, Advance 'B' Account, inspection of Register of Audit Queries, ad-hoc interim imprest register, inspection of pay register, Right to Information Act, public complaints register, asset management, checking files on inspection of GN offices, inspection of vehicles, inspection of log entries, providing motor bicycles among Field Officers on concessionary basis, inspection of Field Officers' Division, Annual permits, revision of annual permits, Administration of survey plans, acquisitions, land disputes.	08	14.03.2018

9	Opanayake	issuing timber permits, safety of timber seals, animal transport permits, issuing pawning license, Registration of Business Names, issuing excise license, checking files on inspection of GN offices, General Deposit Account, counterfoil register, conducting Regional Audit Committees, Rural Infrastructure Development Programme-2017, Advance 'B' Account -2017, inspection of subject on vehicles, procurement, Programme on Eradication of Electronic Waste and Save the Earth', asset management, cadre information, non-payment of retention money, training programmes, Programme for Development of Traditional Handicraft Industry, Right to Information Act, checking payment vouchers, training the staff, Inspection of Field Officers' Division, Control Account on Outstanding Tax, tax index, tax revisions, conducting land kachcheri, administration of survey plans, land disputes, levies for diverting water, conservation of water sources, inspection of project files, Rural Infrastructure Development Programme.	04	14.03.2018
10	Balangoda	Issuing timber permits, issuing animal transport permits, public petitions register, Registration of Business names, excise license, Railway warrants, issuing pawning license, issuing permis for excavation and transport of sand, soil, gravels, Register of General Deposits, inspection of Vote-Ledger, inspection of stores, inspection of vehicles, procurement, non-payment of retention money, issue of ad-hoc interim imprest, inspection of Security Register, Electronic National Identity Card Project, cadre information, <i>Kithul</i> Development Programme, annual tax, Land disputes, conducting land kachcheri, acquisitions, inspection of Field officers' Division.	08	09.01.2018
11	Imbulpe	General Deposit Account, permits for cutting and transport of wood, Registration of Business Names, issuing permits for excavation and transport of sand, soil, gravels for non-commercial purposes, Excise license, valuation certificates, vehicle revenue licenses, delay of reply for audit queries, Register of Damages and Losses, pensions, air rifles and issuing ammunition, counterfoil register, conducting staff meetings, conducting Regional Audit and Management Committee, maintaining attendance registers, defects in internal control, book index, checking files on inspection of GN offices, inspection of offices of Economic Development Officers at GN Division levels, procurement, Special programme for rural infrastructure development, asset management, inspection of vehicles, Bank reconciliation, ad-hoc interim imprest account,	-	-

		cadre information, Electronic National Identity Card Project, Right to Information Act, providing motor bicycles among Field Officers on concessionary basis, Programme for alleviation of poverty-2017, programme for upgrading traditional blacksmith industry at Hatanpola, non-payment of retention money, details of training programmes in 2017, details of training programs of the reviewed year, development project reports, programme on feasibility and project supervision, awareness programme for students on ‘ children’s world and adulthood, inspection of Field Officers’ Division, Tax Control Account, tax revisions, conducting land kachcheri, levies for diverting water, land disputes, administration of survey plans, water sources to be conserved, acquisition of lands, inspection of files relating to development projects.		
12	Weligepola	issuing timber permits, animal transport permits, issuing permits for excavation and transport of sand, soil, gravels for non-commercial purposes, Registration of Business Names, public petitions register, excise license, register of audit queries, register of damages and losses, annual permits, long-term lease, conducting land kachcheri, land disputes, administration of survey plans, inspection of Field Officers’ Division, action plan and resource aspects, Security Register, ad-hoc interim imprest register Electronic National Identity Card Project, <i>Kithul</i> Development Programme, Right to Information Act, cadre information, Fixed Assets Register, inspection of pay ledger, providing motor bicycles among Field Officers on concessionary basis, inspection of GN offices, procurement, inspection of the subject of vehicles, advanced programmes, Register of General Deposits, non-payment of retention money.	08	09.01.2018
13	Kahawatta	General Deposit Account, permits for cutting and transport timber, Registration of Business Names, Pawning license, excise license, issuing permits for excavation and transport of sand, soil, gravels for non-commercial purposes, vehicle revenue license, conducting Regional Audit Committees, checking files on inspection of GN offices, procurement, Rural Infrastructure Facilities Development Programme, inspection of vehicles, ad-hoc interim imprest register, inspection of Vote Ledger, cadre information, asset management process, inspection of stores, Right to Information Act, Non-payment of retention money, public petitions register, Soil Conservation Programme-2017, checking vouchers, inspection of Field Officers’ Division, annual licenses, revisions of tax, encroachments, long-term lease, land kachcheri, acquisitions, conservation of natural water sources	-	

14	Godakawela	Issuing timber permits, registration of Business Names, excise license, issuing permits for excavation and transport of sand, soil, gravels for non-commercial purposes, issuing pawning license, cadre information, General Deposit Account, counterfoil register, book index, Rural Infrastructure Facilities Development Programme-2017, procurement, Action Plan, inspection of Field Officers' Division, inspection of Vote Ledger, asset management, inspection of GN offices, annual tax, Control Account on Outstanding Tax, levies for diverting water, conducting land kachcheri, encroachments, administration of survey plans, land disputes, conservation of natural water sources.	-	-
15	Embilipitiya	Cash check, bank reconciliation, Register of General Deposit, register of cheques and money orders, Advance 'B' Account, inspection of Vote Ledger, checking vouchers, inspection of pay registers, assets management, procurement, leaving out register of Field Officers, register of duty leave, inspection of personal files, inspection of advanced programmes and performed programmes, leave, Registration of Business Names, register of ad-hoc interim imprest, inspection of vehicles, inspection of GN offices, Right to Information Act, staff meetings, inspection of record room and timber registers, inspection of duties of Land Division, inspection of Registrar Division.	21	08.03.2018
16	Kolonna	Issue of timber license, issuing permits for excavation and transport of sand, soil, gravels for non-commercial purposes, General Deposit Account, Registration of Business Names, animal transport permits, cadre information, checking files on inspection of GN offices, issuing pawning license, excise license, bank reconciliation, Security Register, Electronic National Identity Card Project, Right to Information Act, register of ad-hoc interim imprest, inspection of Vote Ledger, Poverty Alleviation Programme, Programme on Traditional Handicraft Villages Development-2017, non-payment of retention money, inspection of subject of vehicles, bookindex, assets management, Kithul Development Programme 2016, inspection of Field Officers' Division, annual tax, administration of survey plans, land disputes, acquisitions, conducting land kachcheri.	-	-

17	Kiriella	Deposit Account, issuing permits for cutting and transport timber, vehicle revenue license, issuing pawning license, excise license, issuing permits for excavation and transportation of sand, soil, gravels for non-commercial purposes, counterfoil register, checking files on inspection of GN offices, Procurement 2017/2018, Rural Infrastructure Facilities Development Programme-2017, training the staff, checking vouchers, inspection of ad-hoc interim imprest register, inspection of Vote Ledger, cadre information, Right to Information Act, <i>Kithul</i> Development Programme 2017, Programme on ' <i>Vivaha prapthiyata Arunellak</i> ', public petitions register, Field Division, Control Account on Outstanding Tax, revision of tax, conducting land Kachcheri, land disputes, administration of survey plans, conservation of natural water sources	-	-
----	----------	---	---	---

**Annex 02**

4	5				6	7
Inspections and Investigations	Conducting District Audit and Management Committee				Issuing Internal Audit Instructions	Analysis of Reports and Solving Related Problems
Issued Number	No. of Committees conducted				No. of Instructions issued during the year	Types of Reports analyzed throughout the year applicable to Divisional Secretariats
02	04				02	03
	1 <sup>st</sup> Quarter Committee Meeting	2 <sup>nd</sup> Quarter Committee Meeting	3 <sup>rd</sup> Quarter Committee Meeting	4 <sup>th</sup> Quarter Committee Meeting		
<p>1. Investigation on irregularities committed by Grama Niladari of Ayagama</p> <p>2. Public petition regarding non-receipt of money for mending the roof and the ceiling of the official residence of Divisional Secretary of Elapatha</p>	05.03.2018	15.05.2018	23.08.2018	15.11.2018	<p>(01. Internal instructions for proper maintenance of Grama Niladari offices towards an efficient and effective public service)</p> <p>(02. Instructions issued to Divisional Secretaries regarding custody, preservation and removal of official documents)</p>	<p>(01. Reports of Regional Audit Committees)</p> <p>(02. Quarterly Reports on Vehicle Cost)</p> <p>(03. Bank Reconciliation Reports)</p>

➤ **Statistics Division - Colecting Data**

❖ Progress of Performance Report of achievements Action Plan Gols Year 2018 - Surveys							
Details	No of Assignments	No of Activities	Prograss	Total Alloction	Exp.as at 31.12.2018	Finanncial Progress (%)	Remarks
Survey on Yield of Paddy	87	64	73.56%				No adequate paddy fields were cultivated and harvesting before the survey
Survey on manpower	130	129	99%	46,400.00	38,742.50	83%	
Survey on Expenditure on Tourism	House hold Unit 890	890	100%	-	-		
Quarterly Survey on Industrial Production	5	5	100%				
Yearly Survey on Industrial	387	110	28%	43,290.00	28,748.00	66%	Survey is underway due to delay of preparation of accounts.
Drawing up a list of Agriculture Household Units	Census categories 154	101	65%	56,691.00	34,979.00	61%	

**❖ Progress of Performance Report of achievements Action Plan Gols Year 2018 - Colecting Staticical Data**

<b>Details</b>	<b>No of Assigments</b>	<b>Prograss</b>	<b>Total Alloction</b>	<b>Exp.as at 31.12.2018</b>	<b>Finanncial Progress (%)</b>	<b>Remarks</b>
Collecting Census of Paddy	Given for 575 divisions according to irrigation methods as appropriate to 2017/2018 Maha and 2018 Yala Seasons	100%	-	-		
Preparing Paddy Field Register	Prepared	100%	-	-		
Statistics of Buildings	Given for 17 local government authorities on monthly basis.	100%	-	-		
Local Government Census	Information was submitted					
Collecting census on dry farming	Collected monthly relevant to thet two seasons and submitted to the head office	100%				
Collecting census on animals and live stock	Collected monthly relevant to thet two seasons and submitted to the head office	100%	-	-		
Producer's price	Collected monthly at Divisional secretariat level and submitted to the head office	100%	-	-		
Collection of city market prices	Collected weekly/fortnightly/ monthly/quarterly and submitted to the head office.	100%	37,646.00	35,474.00	94%	
Collecting census on timber	Collected at Divisional Secretariat level and submitted to the head office	100%				

## 2 . Inspection of Grama Niladhari Offices

### ❖ Reports on Inspection of Grama Niladhari Offices as at 31.12.2018

S. No.	Divisional Secretariat	No. of G.N. Divisions	Total No. of Offices inspected for the first time	Total No. of Offices inspected for the second time	No. of Offices not inspected for the second time	Total No. of offices inspected for the third time	No.of offices not inspected for the third time
1	Ratnapura	53	53	53	0	4	49
2	Elapatha	20	20	20	0	12	8
3	Kuruwita	39	39	39	0	0	39
4	Eheliyagoda	44	44	43	1	3	41
5	Ayagama	21	21	8	13	2	19
6	Pelmadulla	37	37	31	6	6	31
7	Opanayake	20	20	19	1	14	6
8	Embilipitiya	40	40	40	0	40	0
9	Kolonna	29	29	3	26	0	29
10	Kahawatta	21	21	21	0	1	20
11	Nivithigala	24	24	24	0	1	23
12	Godakawela	44	44	43	1	1	43
13	Kalawana	33	33	32	1	30	3
14	WEligepola	30	30	25	5	10	20
15	Imbulpe	50	50	50	0	2	48
16	Balangoda	53	53	29	24	6	47
17	Kiriella	17	17	17	0	4	13
<b>Total</b>		<b>575</b>	<b>575</b>	<b>497</b>	<b>78</b>	<b>136</b>	<b>439</b>

### ➤ Social Services Division

Rehabilitation of differently abled persons, strengthening such persons in parallel with housing aid programme and vocational training programme, implementation of Programmes on Child guidance Centres as well as living allowance for elderly and differently abled persons.

#### ❖ Uplifting Differently Abled Persons

S. No.	Programme	No. of Beneficiaries	Expenditure (Rs.)
1	Living allowances Programme (Rs.3,000/=)	1589	5,720,400.00
2	Direct Project Aid	19	280,865.00
3	Providing self-employment opportunities for dissabled persons	12	300,000.00
4	Single Parent Families Programme	26	519,600.00
5	Maintainance of Child Gaudance Centres	0	239,600.000
6	Drug Prevention Programme	0	0
7	Housing aid for dissabled persons.	11	580,000.00

#### ❖ Uplifting elderly persons

S. No.	Programme	No. of Beneficiaries	Expenditure (Rs.)
1	Senior Citizen Programme	26,198	628,752,000.00

#### ❖ Social Development Programme

S.No.	Programme	No. of Programmes
1	Child Guidance Programme	04
2	Special Programme for Diabled Persons	42
3	Health clinics for elderly persons	96
4	Sp[ecial programme for elderly persons	34
5	'Swashakthi' training programme	42
6	Elders boards of Authority and 'Swashakthi' Organization Programme	76
7	Drug prevention programme	65
8	Awareness programme for voluntary servents	15
9	Other Social Development Programmes	175

➤ **Child Development and Women's Affairs Division**

Probation and Child Care Services, programmes on strengthening women and implementation of awareness programmes

❖ **Programmes Implemented by National Child Protection Authority**

S. No.	Programme	No. of Programmes	No. of Beneficiaries
1	Raise awareness among children's societies	85	4,741
2	Raise awareness among parents	95	4,591
3	Raise awareness among civil community leaders	115	6,788
4	Skill development of practitioners	18	2,180
5	Raise awareness among estate community	06	360
6	Establishment of Child Protection Committees	27	1,865
7	Investigation in complaints (1929/ other)	678	1,133
8	World Children's Day Programmes	02	255
9	Edifying maternal clinics	14	572
10	'Janapaura' Programme	01	130
11	Schooling children	18	18
12	Child Development Committee Meetings	03	03

❖ **Other Programmes on Child Protection**

S. No.	Programme	No. of Programmes	Expenditure (Rs.)	No. of Beneficiaries
1	Raise awareness among Health Officers on Practitioners' Protection	02	36,800.00	81
2	1929 Educational aid programme	01	2,000.00	01
3	World Children's Day Programme	01	103,365.00	105
4	Supervision of Children's Homes	10	94000.00	120
5	Celebration of International day against child labour	01	41,025.00	100
6	Progress Review	09	29,000.00	70
7	'encouraging children to win the future'	01	945,000.00	100
8	Programme on reducing teenage pregnancy	01	25,000.00	45
9	Establishment of Child Protection Committees	68	168,000.00	2,313
<b>Total</b>		<b>94</b>	<b>444,190.00</b>	<b>2,935</b>

❖ Services by the Department of Probation and Child Care

S. No.	Programme	No. of Programmes	No. of Beneficiaries	Provisions(Rs.)	
				Department	Earned
1	Children's Societies	34	850	85,000.00	3,150,000.00
2	Children's Council	34	680	85,000.00	0.0
3	Rural Committees	17	1,200	85,000.00	0.0
4	Regional Operational Committees	68	850	170,000.00	0.0
5	Aid from 'Kepakaru' parents	56	56	276,000.00	0.0
6	Assistance for twin babies	29	29	120,000.00	0.0
7	Nutritional aid	02	02	10000.00	0.0
8	Medical aid	13	13	15,000.00	0.0
9	Sadden disaster aid	17	17	102,000.00	0.0
10	Educational aid	102	102	102,000.00	0.0
11	Model Village Programme	17		51,000.00	0.0
12	Celebration of Universal Children's Day	17	3,700	51,000.00	0.0
13	Uplifting children at risks	85	320	3,040,000.00	0.0
14	Schooling	02	127	18,750.00	0.0
15	Estate Sector	17	97	97,000.00	0.0
16	Raise awareness among school children	72	4,680	85,000.00	0.0
17	Protection	27	650	0.0	0.0
18	Raise community awareness	17	2,125	85,000.00	0.0

❖ Department Services and other Programmes in the District

S. No.	Programme	No. of Programmes	No. of Beneficiaries	Provosions (Rs.)	Expenditure (Rs.)
1	District Children's Council	04	400	34,000.00	40,000.00
2	Training on Meaningful Child Participation	02	75	24,000.00	16,320.00
3	Celebration of Universal Children's Day	01	350	5,000.00	100,000.00
4	Progress Review	12	17	54,000.00	37,000.00
5	Children's Societies Survey	01	60	50,000.00	0
	<b>Total</b>	<b>20</b>	<b>902</b>	<b>167,000.00</b>	<b>193,320.00</b>

## ➤ Disaster Management Division

National Disaster Management Centre was established in 1996 under the Ministry of Social services and Social Welfare and it was operated under Ministry of Disaster Relief Services in accordance with the Gazette Extra Ordinary No. 1422/22 dated 08.12.2005 in order to plan relief, rehabilitation and reconstruction. Later it was taken under Ministry of Disaster Management with effect from 30.04.2010 according to the Gazette notification No. 1651/220.

Accordingly, Implementation of Awareness Programmes on disasters, rehearsal Programmes, Programmes on protection, Preparation of Rural Plans and implementation of disaster relief services are implemented under this Division.

### ❖ Condition Prevailed in Ratnapura District during South-West Monsoon Season in 2018

No. of Grama Niladari Divisions	319
No. of Families	9,362
No. Of Members	36,353
No. of Deaths	3
No. of Injured	4
No. of Safety Camps	43
No of Families	515
No. of Members	2,042
House Damage (fully)	20
House Damage (partially)	729
Business Damages	70

### ❖ Programmes Implemented in 2018

- Sudden disaster resilience
- Resettlement programme
- Providing expeditious relief
- Compensation for damages 2017
- Upgrading Safty Centres
- Infrastructure Development Programme under Resettlement
- Other

❖ **Providing Expeditious Reliefs**

Description	Allocation (Rs)
Cooked meal/ dry rations/ Administrative Expenditure (1501)	8,829,855.00
Cooled meal, Dry rations (NITF)	13,521,426.00
1/3 allowance	13,827,754.53

❖ **Construction of Infrastructure Facilities in State Lands to be Resettled**

Total Provisions (Rs.)	14,688,214.53
Allocation	14,688,214.53
Total Expenditure as at 31.12.2018	4,392,246.86
Balance	3,452,857.90
Bills in hand	6,843,109.77

❖ **Compensation in May 2017**

Total Provisions (Rs.)	2,075,000,000.00
Allocation	2,014,000,000.00
Total Expenditure	1,297,047,314.90
Total Balance	777,952,685.10

❖ **Drought Relief**

Total Provisions (Rs.)	65,678,368.00
Total Expenditure	57,198,868.78
Total Balance	8,479,500.00

**❖ Women Development Programmes/Programmes of National women's Committee Implemented in Ratnapura District -2018**

S.No	Divisional Secretariat	Programmes/ Activities	Vote of Expenditure	Liabilities (Rs.)	Actual expen.(Rs.)	Saving (Rs.)	No. of Beneficiaries
01	Kalawana	'Sumithuru' village	120-02-03-6-2509	40,000.00	40,000.00	-	379
	Kahawatta			40,000.00	40,000.00	-	469
02	Embilipitiya	Counselling Programme		10,000.00	10,000.00	-	50
	Eheliyagoda			10,000.00	10,000.00	-	103
	Kuruwita			10,000.00	10,000.00	-	80
03	Ratnapura	Programme on 'Meaningful Future for Youthful days'		61,550.00	61,550.00	-	60
	Kolonna			62,300.00	62,300.00	-	100
04	Ayagama	Economical enforcement of emigration women		250,000.00	250,000.00	-	10
05	Kolonna	Economical enforcement of estate women		25,650.00	23,890.00	1,760.00	05
	Ayagama			25,000.00	24,997.00	3.00	05
	Elapatha			30,000.00	29,475.00	525.00	04
	Kahawatta			30,000.00	30,000.00	-	04
06	Opanayake	Strengthening Women's Organization Network (Women in Boards of Authority)		200,000.00	200,000.00	-	10
	Balangoda		5,000.00	5,000.00	-	53	
	Ratnapura Dist.		15,000.00	15,000.00	-	123	
07	Kuruwita	Programme for motivation of Income Generation	17,000.00	17,000.00	-	25	
	Kalawana		17,000.00	16,700.00	300.00	25	
08	Ratnapur Dist.	Women's production exhibition and fair	100,000.00	92,906.00	7,094.00	87	
09	Ratnapura Dist.	Quality/ Marketing Management Training Program.	29,166.00	27,996.00	1,170.00	36	
10	Ratnapura Dist.	Programme for exchange experience among business-women	20,250.00	20,250.00	-	16	
11	Ratnapura Dist.	Project on uplifting women connected to prisoners' families. (Pelmadulla, Kuruwita, Ratnapura, Elapatha)	143,800.00	141,526.00	2,274.00	04	
12	Ratnapura Dist.	Ratnapura District Capacity Development Training Prog'	131,537.50	58,347.50	73,190.00	30	
13	Ratnapura Dist.	Maintenance of Women's Protection Centre in Ratnapura	120-02-03-17-2509	245,939.26	245,939.26	-	
<b>Total</b>				<b>1,519,192.76</b>	<b>1,432,876.76</b>	<b>86,316.00</b>	<b>1678</b>

S. No.	Divisional Secretariat	Programme/Activity	Vote of Expenditure	Liability (Rs.)	Actual expenditure (Rs.)	Saving (Rs.)	No. of Beneficiaries
14	Kahawatta	Providing self- employment opportunities for house-holder women (Entrepreneurship and Attitude Development Training Programme /Vocational and Technical Training /providing technical and financial assistance /Organizing and networking house holder women and business community/ progress review and feedback)	120-02-03-21-2509	260,000.00	256,371.00	3,629.00	10
15	Kalawana			244,000.00	244,000.00	-	06
16	Ayagama			265,000.00	265,000.00	-	09
17	Nivithigala			260,000.00	257,826.00	2,174.00	05
18	Elapatha			250,000.00	247,727.00	2,273.00	09
19	Kahawatta	Raise awareness among women and girls with regard to prompt response at risky situations and prevent abuse and exploitations	120-02-03-20-2509	20,000.00	20,000.00	-	113
20	14 Divisional Secretaries of Ratnapura District	Counselling service conducting with a view to resolve problems which are based on sex and gender based sociality Rarnaoura,Kolonna, Balangoda, Opanayake, Eheliyagoda, Kuruwita, Embilipitiya, Weligepola, Kahawatta, Pelmadulla, Godakawela, Nivithigala, Kalawana, Imbulpe	120-02-03-20-2509	287,830.00	287,605.00	225.00	954
21	Ratnapura Ayagama	Awareness programme for estate community	120-02-03-8-2509	41,400.00	41,400.00	-	109
				41,400.00	41,400.00	-	106
<b>Sub Total</b>				<b>1,599,000.00</b>	<b>1,590,699.00</b>	<b>8,301.00</b>	<b>1,106</b>
<b>Total</b>				<b>3,118,192.76</b>	<b>3,0235,75.76</b>	<b>94,617.00</b>	<b>2,784</b>

## ➤ Buddhist Affairs Division

### ❖ Buddhist Religious Development

- Making participated Dhamma school teachers in Pali Language Promotion Programmes for the improvement of knowledge in Pali language, collecting information on Dhamma school teachers/students, Diploma Course, awarding certificates to Dhamma school students, evaluation of skills of students, conducting essay writing competitions among students.
- Collecting teacher/student information relevant to 654 Dhamma schools for distributing teachers' allowances and uniforms and forwarding the information to relevant authorities.
- Implementing housing projects such as “ Thisarana Sarana”, “ Sasunen Sevana”, “Buduputh Mapiya Niwasa”, implementation of “Bosath Dampal” Programme, Commemoration of Sumangala Nayaka Thero.
- Organizing a annual procession of Ratnapura Maha Saman Devalaya, Bolthumbe Maha saman Devalaya and Aluthnuwara Kuda Kataragama Devalaya, organizing the procession of Sankhapala Rajamaha Viharaya and organizing the commencement and ending of sri Pada pilgrimage season.
- Conducting District Sasanarakshaka Bala Mandala, collecting information regarding temples and ancient religious places, providing aids for the development of remote temples, provide assistance for the advancement of Dhamma schools.
- Organizing National Dhamma School Day celebrated on 03.08.2018.



## ➤ Cultural Division

Series of all religious programmes, creating event groups, raffle draw, raising cultural board of authority fund, 'Nidahase Minisa' National Independence Day Celebration, Programme (for nursery kids) on awakening thoughts of nature in children's mind are the programmes organized by this Division.

### ❖ Cultural Programmes

S. No.	Programme	No. of Programmes
<b>1</b>	<b>Improving Art Institutes</b>	
1.1	Registration of new Art Institutes	03
1.2	Assistance to the Art Institute	58
1.3	Making aware on competitions on dancing and other events	170
1.4	Annual functions	120
<b>3</b>	<b>Programmes on advancement of artiste</b>	
3.1	Different artistic programmes	51
3.2	Kala Bhushana Award (Persons)	09
3.3	Providing assistance for artistes	141
3.6	Medical aid for artistes (persons)	19
<b>4</b>	<b>Other cultural Programmes</b>	
4.1	'Dolosmahe Pahana' Programme	204
4.2	Providing assistance for processions	01
4.3	District cultural Festival	01
4.4	other	81

➤ **Motor Traffic Section**

<b>S.No.</b>	<b>Activity</b>	<b>No. of Applied</b>	<b>Income(Rs.)</b>
01	Issue of new driving licenses	21,449	62,378,925.00
02	Renewal of driving licenses	6,972	
03	Issue of identity	281	
04	Transfer of vehicles	12	
05	Issue of weight certificates	1,955	
06	Issue of number plates	8,447	Free of charge
07	Issue of prohibition orders	237	
08	Recruitment of new drivers and conducting Efficiency Bar Examinations	52	

## ➤ District Development- 2018

### ✦ Construction of New District Secretariat Complex

The Ratnapura District Development Project was done under the provisions of the following institutions.

➤ Head – (278) District Secretariat Rathnapura

**Construction of new District Secretariat Complex –Basic phase**



**Construction of new District Secretariat Complex –final**



Development project	Total estimated cost (Rs.)	Expenditure as at 31.12.2017. (Rs.)	Expenditure in 2018 (Rs.)	Cumulative Expenditure 01.01.2019 (Rs.)	Progress(%)
Construction of new District Secretariat Complex	697,000,000.00	443,652,816.43	112,519,516.81	556,172,333.24	98.14%

➤ Economic Development

Prominent Development Projects in the District -2018

(Provisions by Other Departments)

Expenditure Head and Description	Development Programme	No. of Projects	Provisions (Rs.m.)	Expenditure (Rs.m.)	Value of bills in hand (Rs.m.)	Physical Progress
Ministry of Buddha Shasana	1.Renovating under-developed temples	31	12.19	8.44	3.56	68%
	2.Reconstruction of under-developed Dhamma schools	33	5.4	4.7	0.4	87%
Ministry of National Policies and Economic Affairs	1.Decentralized Budget Programme	890	119.99	106.16	5.95	100%
	2.Special combined Rural Development Programme-Sinharaja	12	57.76	12.5	11.28	85%
	3.Special Programme i- Development of Infrastructure Facilities	232	896.00	222.35	252.58	91%
	4.Special Programme ii- Development of Infrastructure Facilities	65	114.22	14.64	36.71	96%
	5. Accelerated Rural Development Programme - Gamperaliya	220	879.31	95.91	31.1	98%
	6.Religious Centres Development Programme	12	6.0	2.99	2.97	100%
Ministry of Fisheries and aquatic Resources Development and Rural Economy	1. Rural Economic development programme (project associated with kithul projects)	7	1.56	1.53	0	100%
	2. Upgrade of handicrafts villages	5	1.04	1.0	0	100%
	3.Promotion of Rural Economy	18	13.18	8.26	4.18	100%
	4.Programme on ‘ <i>Wewak Samaga Gamak</i> ’	5	6.25	2.0	3.37	100%
Ministry of Sports	1. Development of rural Playgrounds	8	16.35	8.01	4.11	87%
Presidential Secretariat	1. Punarudaya” National programme on Environmental preservation / Sustainable School Development Programme	21	6.79	6.78	0	100%

	2. Multi Sectoral action plan for nutritional programme review	160	1.66	1.60	0	100%
	3. Grama Shakthi” peoples’ campaign	70	93.41	19.10	32.32	18%
Ministry of Youth Affairs, Business Management and Southern Development	1. Regressive Development Programme	10	42.0	3.29	4.4	70%
Ministry of Regional Development	1. Regional Infrastructure Development Programme	9	4.96	4.43	0.42	100%
	2. Socio-Cultural Housing Project	36	0.72	0.69	0	100%
	3. Regional Livelihood Development Programme	16	0.64	0.63	0	100%
Ministry of Megapolis and Western Development	‘ <i>Sukhitha Purawaraya</i> ’ Mini Town Development Programme	68	46.57	20.68	9.42	43%
Ministry of Irrigation and Water Resource Management	Project on minimizing climatic impact	4	211.00	12.68	0	5%
National Integration, Reconciliation and National Languages	Development Assistant Project for the promotion of Reconciliation	26	10.0	4.5	4.69	45%
Ministry of Housing and Welfare	Infrastructure Development Programme in Remote Villages where Samurdhi Beneficiaries Live	3	6.0	0.09	5.82	1.05%
<b>Total</b>		<b>1,963</b>	<b>2,553.2</b>	<b>562.8</b>	<b>413.28</b>	

➤ **Projects implemented under Ministry of Buddha Sashana**

❖ **Religious Centres Development Programme - 2018**

S. No.	Divisional Secretariat	Total No. of Approved Programme	No. of Implemented Project	Provisions (Rs.m.)	Value of the Implemented Projects (Rs.m.)	Physical Progress		Financial progress (Rs.m.)	Amount of bills in hand(Rs.m)	Benifisheries
						Finished	Partially finished			
1	Embilipitiya	5	5	2.50	2.50	5		0.00	2.48	780
2	Eheliyagoda	2	2	1.00	1.00	2		1.00		452
3	Kuruwita	1	1	0.50	0.50	1		0.49		250
4	Kolonna	2	2	1.00	1.00	2		1.00		730
5	Godakawela	1	1	0.50	0.50	1		0.50		212
6	Nivithigala	1	1	0.50	0.50	1		0.00	0.50	395
<b>Total</b>		<b>12</b>	<b>12</b>	<b>6.00</b>	<b>6.00</b>	<b>12</b>		<b>2.99</b>	<b>2.97</b>	<b>2,819</b>

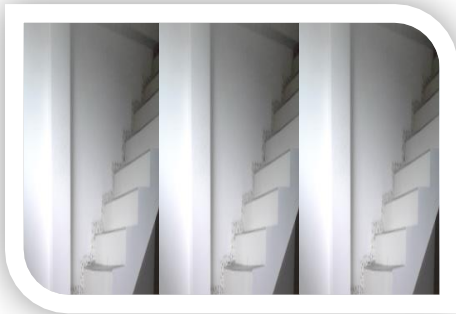
❖ **“Punya Grama” Development Programme - 2018**

S. No.	Divisional Secretariat	Name of the Temple	Financial Progress (Rs.mn)	Physical Progress(%)
1	Kalawana	Panapola Viharaya	500,000.00	100
2	Imbulpe	Mamalgaha Jinajothikaramaya	500,000.00	100
3	Elapatha	Alupathgala Aranya Senasanaya	500,000.00	100
4	Ayagama	Sri Gangarama Viharaya	500,000.00	100
<b>Total</b>			<b>2,000,000.00</b>	<b>100</b>

❖ Renovation of Under-developed Temples - 2018

S. No.	Divisional Secretariat	Total No. of Approved Programme	No. of Implemented Project	Provisions (Rs.m.)	Value of the Implemented Projects (Rs.m.)	Physical Progress		Finacial Progress	Amount of bills in hand (Rs.m)	Benifisherries
						Finished				
1	Elapatha	1	1	0.3	0.3	1		0.3		65
2	Eheliyagoda	4	4	0.9	0.9	4		0.9		110
3	Embilipitiya	4	4	1	1	4		0.97		125
4	Imbulpe	2	2	0.6	0.6	2		0.6		85
5	Opanayake	2	2	0.6	0.6	2		0.55		45
6	Kalawana	4	4	3.4	3.4	4		2.13	1.26	90
7	Kahawatta	2	2	0.5	0.5	2		0.48		60
8	Kiriella	2	2	0.6	0.6	2		0.6		75
9	Kuruwita	2	2	0.5	0.5	2		0.5		40
10	Kolonna	3	3	2.5	2.5	3		0.49	2.0	140
11	Nivithigala	1	1	0.3	0.3	1		0.0	0.3	65
12	Balangoda	3	3	0.74	0.74	3		0.67		55
13	Weligepola	1	1	0.25	0.25	1		0.25		40
<b>Total</b>		<b>31</b>	<b>31</b>	<b>12.19</b>	<b>12.19</b>	<b>31</b>		<b>8.44</b>	<b>3.56</b>	<b>995</b>

## Projects Being Implemented under Religious Centres Development Programme



**Renovation of Bzar Jumma Masjid  
Mosque at Ratnapura Town -West-  
Ratnapura DS Division**



**Construction of sanitary lavatory system  
at Thimbolketiya SirinagaRajamaha  
Viharaya -**



**Reconstruction of Omalpe Tempita  
Viharaya**

**Construction of the security wall with elephant models  
around Sri Sudharmaramaya temple at Thoragala,  
Hingura**



➤ **Projects implemented under Ministry of National Policies and Economic Affairs**

❖ **Decentralized Capital Budget Programme (DCB) - 2018**

S. No.	Divisional Secretariat	Total No. of Approved Programme	No. of Implemented Project	Provisions (Rs.m.)	Value of the Implemented Projects (Rs.m.)	Physical Progress		Provisions (Rs.m.)	Value of bills in hand (Rs.m)	No. of Benifisherries
						Finished	Partially Finished			
1	Ayagama	45	44	3.98	3.79	44		3.67		5,277
2	Elapatha	76	75	7.06	6.67	75		6.49		20,415
3	Eheliyagoda	56	55	5.66	5.46	55		4.84	0.515	18,098
4	Embilipitiya	38	38	3.40	3.41	38		3.33		14,709
5	Imbulpe	37	36	6.61	6.51	36		5.34	1.031	3,496
6	Opanayake	20	19	2.91	2.53	19		2.43		5,404
7	Kalawana	64	58	7.07	6.37	58		3.5	2.338	39,751
8	Kahawatta	37	36	3.76	3.73	36		3.51		4,848
9	Kiriella	29	29	3.17	3.17	29		3.00	0.101	4,639
10	Kuruwita	86	82	12.46	11.13	82		8.92	1.891	22,818
11	Kolonna	24	24	2.84	2.84	24		2.76		3,080
12	Godakawela	71	70	11.99	11.78	70		11.16		23,632
13	Nivithigala	54	54	7.59	7.59	54		7.28		35,218
14	Pelmadulla	86	84	13.19	12.88	84		12.32		23,822
15	Balangoda	39	39	7.78	7.78	39		7.5		11,787
16	Ratnapura	125	124	16.87	16.77	124		16.35		34,437
17	Weligepola	24	23	3.65	3.60	23		3.56		10,877
Admin expenditure of the Dist Sec.								0.203	0.076	0
<b>Total</b>		<b>911</b>	<b>890</b>	<b>119.99</b>	<b>116.01</b>	<b>890</b>		<b>106.16</b>	<b>5.952</b>	<b>282,308</b>

## Projects under Decentralized Capital Budget Programme



**Renovation of bathing well at Kukulekanda in  
Haththella division -  
Opanayake DS Division**



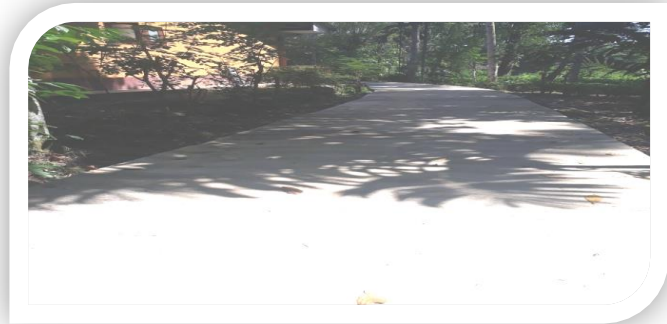
**Reparing damaged parts of the Mahingoda-  
Mahara main road -  
Eheliyagoda D.S. Division.**



**Laying concrete to Demalaporuwa-  
Mahawatta by road -  
Elapatha DS Division**

**Sinharaja Special Combined Rural Development Programme – 2018**

S.No.	Divisional Secretariat	No. of Total Projects	Implemented Project	Allocation (Rs.mn)	Project cost (Rs.mn)	Physical Progress		Financial Progress	Value of bills in hand (Rs.m)	No. of Continuous work	Value of continuous work (Rs.m)	Benifiseries
						Finished	Partially Finished					
1	Kalawana	19	6	31.91	15.41	5	1	3.43	9.13	1	0.98	3,066
2	Ayagama	7	5	13	10	5		9.07				8,495
3	Elapatha	2	1	12.85	7.93		1		2.15	1	4.57	1,100
<b>එකතුව</b>		<b>28</b>	<b>12</b>	<b>57.76</b>	<b>33.34</b>	<b>10</b>	<b>2</b>	<b>12.50</b>	<b>11.28</b>	<b>2</b>	<b>5.55</b>	<b>12,661</b>



**Veddagala South maha vidyalaya road, panapola Road development-  
Kalawana DS Division**



**Renovating kadawatha road via Ambagahakandap  
Ilukpotha, Pelawatta -  
Kalawana DS Division**

❖ Special Programme (i) - Development of Infrastructure Facilities

S. No.	Divisional Secretariat	Total No. of Approved Programme	No. of Implemented Project	Provisions (Rs.m.)	Value of the Implemented Projects (Rs.m.)	Physical Progress		Provisions (Rs.m.)	Value of bills in hand (Rs.m)	No. of Continuous work	Value of continuous work (Rs.m)	Benefiseries
						Finished	Partially Finished					
						1	Ayagama					
2	Eheliyagoda	26	19	22.50	17.50	18	1	6.31	10.24	1	1.05	8,460
3	Embilipitiya	88	85	92.47	89.47	85		23.39	65.34			17,520
4	Imbulpe	18	15	26.93	22.50	15		10.47	11.85			0
5	Opanayake	1	0	1.00	0.00	0		0.00	0.00			0
6	Kalawana	35	7	57.36	10.50	7		10.32	0.00			169
7	Kahawatta	1	1	0.50	0.50	1		0.49	0.00			10,400
8	Kiriella	5	2	7.27	4.00	2		3.99	0.00			13,200
9	Kuruwita	20	15	14.07	11.76	15		6.38	5.00			28
10	Kolonna	29	24	34.06	29.05	24		24.90	3.98			2,930
11	Pelmadulla	5	1	6.63	1.00	1		0.96	0.00			39
12	Godakawela	5	4	5.00	4.00	4		3.93	0.00			6,300
13	Weligepola	17	0	25.44	0.00	0		0.00	0.00			67
14	Ratnapura	30	25	40.80	35.70	23	2	23.53	9.96	2	1.70	22
DS/Ratnapura		30	20	496.63	393.16	3	17	97.63	130.80	17	187.32	187,000
<b>Total</b>		<b>344</b>	<b>232</b>	<b>896</b>	<b>644.73</b>	<b>212</b>	<b>20</b>	<b>222.35</b>	<b>252.58</b>	<b>18</b>	<b>190.07</b>	<b>260,630</b>

❖ Special Programme (ii) - Development of Infrastructure Facilities

S. No.	Divisional Secretariat	Total No. of Approved Programme	No. of Implemented Project	Provisions (Rs.m.)	Value of the Implemented Projects (Rs.m.)	Physical Progress		Provisions (Rs.m.)	Value of bills in hand (Rs.m)	No. of Continuous work	Value of continuous work (Rs.m)	Benefisheries
						Finished	Partially Finished					
1	Ayagama	4	0	2.00	0.00	0		0.00	0.00			53
2	Elapatha	2	1	1.73	0.75	1		0.67	0.00			860
3	Eheliyagoda	18	8	14.50	5.00	8		0.81	3.89			0
4	Embilipitiya	21	17	23.44	19.94	17		2.91	16.71			675
5	Imbulpe	3	0	1.50	0.00	0		0.00	0.00			1,460
6	Opanayake	1	1	0.50	0.50	1		0.45	0.00			2,320
7	Kalawana	2	0	1.00	0.00	0		0.00	0.00			840
8	Kahawatta	4	0	2.00	0.00	0		0.00	0.00			63
9	Kiriella	8	4	5.45	3.50	4		2.50	0.96			45
10	Kuruwita	26	16	23.94	13.00	16		0.59	12.27			74
11	Kolonna	2	0	2.00	0.00	0		0.00	0.00			105
12	Pelmadulla	11	0	5.50	0.00	0		0.00	0.00			63
13	Nivithigala	5	5	3.19	3.19	5		2.26	0.90			51
14	Balangoda	14	4	6.98	2.00	4		1.96	0.00			22
15	Godakawela	9	0	4.50	0.00	0		0.00	0.00			1,890
16	Weligepola	3	2	1.50	1.00	2		0.98	0.00			1,230
17	Ratnapura	21	7	14.50	4.50	5	2	1.50	1.98	2	1.00	91
<b>Total</b>		<b>154</b>	<b>65</b>	<b>114.22</b>	<b>53.37</b>	<b>63</b>	<b>2</b>	<b>14.64</b>	<b>36.71</b>	<b>2</b>	<b>1.00</b>	<b>9,842</b>

❖ Gamperaliya – Expeditious Rural Development Programme -2018

S. No.	Divisional Secretariat	Total No. of Approved Programme	No. of Implemented Project	Provisions (Rs.m.)	Value of the Implemented Projects (Rs.m.)	Physical Progress		Provisions (Rs.m.)	Value of bills in hand (Rs.m)	No. of Continuous work	Value of continuous work (Rs.m)	Benefisheries
						Finished	Partially Finished					
1	Ayagama	35	0	19.2				0.00				0
2	Elapatha	70	18	43.52	12.59	18		12.06				16,333
3	Eheliyagoda	247	13	59.67	8.6	13		2.15	6.40			2,404
4	Embilipitiya	168	0	99				0.00				0
5	Imbulpe	42	6	14.77	2.3	6		2.29				4,580
6	Opanayake	17	4	4.85	0.8	4		0.75				11,130
7	Kalawana	126	2	85.45	1	2		0.48	0.48			170
8	Kahawatta	100	5	51.47	1.65	5		1.65				3,150
9	Kiriella	153	9	26.83	7	9		6.48	0.49			3,077
10	Kuruwita	835	21	69.23	14.5	20	1	12.88		1	1.49	9,521
11	Kolonna	20	8	12.3	4.2	8		3.98				1,020
12	Godakawela	128	9	99.1	8.2	9		6.13	1.93			3,592
13	Nivithigala	40	15	13.56	5.95	14	1	5.01	0.48	1	0.30	11,712
14	Pelmadulla	60	2	53.2	0.7	2		0.65				383
15	Balangoda	171	52	95.22	36.5	52		26.63	9.41			10,784
16	Ratnapura	868	48	125.04	26.2	47	1	13.14	12.39	1	0.50	16,453
17	Weligepola	18	8	6.9	1.6	8		1.62				9,273
<b>Total</b>		<b>3098</b>	<b>220</b>	<b>879.31</b>	<b>131.79</b>	<b>217</b>	<b>3</b>	<b>95.91</b>	<b>31.58</b>	<b>3</b>	<b>2.29</b>	<b>103,582</b>

❖ **Several Projects Implemented by Gamperaliya Programm**

**Development of Thanjanthenna- Gonapola road – Divisional Secretariat, Balangoda**



**Rehabilitation of Sanitation Facilities for Watapatha School-Nivithigala D.S**



**Road Caperting from Dehenakanda to Udaamunuthanna –Rathnapura D.S.**



**Thanjanthanna Gonapola Road Development-Balangoda D.S**



➤ **Presidential Secretariat**

❖ **On-going Projects**

❖ **Multi-sectoral Plan for Nutrition – 2018**

S.No.	Divisional Secretariat	Total No. of Approved Programme	No. of Implemented Project	Provisions (Rs.m.)	Value of the Implemented Projects (Rs.m.)	Physical Progress		Provisions (Rs.m.)	Benefiseries
						Finished	Partially Finished		
1	Ayagama	22	22	0.097	0.097	22		0.097	2,546
2	Elapatha	10	10	0.095	0.093	10		0.093	2,135
3	Eheliyagoda	12	12	0.097	0.097	12		0.097	960
4	Embilipitiya	10	10	0.100	0.094	10		0.094	941
5	Imbulpe	8	8	0.097	0.097	8		0.097	298
6	Opanayake	7	7	0.100	0.098	7		0.098	597
7	Kalawana	12	9	0.097	0.067	9		0.067	603
8	Kahawatta	9	9	0.100	0.100	9		0.100	25
9	Kiriella	10	10	0.098	0.095	10		0.095	1,690
10	Kuruwita	10	10	0.094	0.094	10		0.094	276
11	Kolonna	12	12	0.100	0.098	12		0.098	462
12	Godakawela	8	8	0.100	0.100	8		0.100	1,192
13	Nivithigala	7	7	0.100	0.092	7		0.092	345
14	Pelmadulla	10	8	0.097	0.095	8		0.095	699
15	Balangoda	6	6	0.100	0.100	6		0.100	315
16	Ratnapura	8	8	0.090	0.089	8		0.089	260
17	Weligepola	4	4	0.095	0.095	4		0.095	232
<b>Total</b>		<b>165</b>	<b>160</b>	<b>1.657</b>	<b>1.601</b>	<b>160</b>		<b>1.601</b>	<b>13,576</b>

## Multi-sectoral Plan for Nutrition - Semina



**Conducting clinics for under-weight  
Children**

**Raise awareness among members vulnerable  
to malnutrition due to poverty**

❖ “Punarudaya” Environmental Preservation Programme – 2018

S. No.	Divisional Secretariat	Total No. of Approved Programme	No. of Implemented Project	Provisions (Rs.m.)	Value of the Implemented Projects (Rs.m.)	Physical Progress (completed Projects)	Financial Progress
1	Ayagama	1	1	0.22	0.22	1	0.22
2	Elapatha	1	1	0.65	0.65	1	0.65
3	Eheliyagoda	1	1	0.24	0.24	1	0.24
4	Embilipitiya	1	1	0.24	0.24	1	0.24
5	Imbulpe	1	1	0.50	0.50	1	0.50
6	Opanayake	1	1	0.18	0.18	1	0.18
7	Kalawana	1	1	0.22	0.22	1	0.22
8	Kahawatta	1	1	0.45	0.45	1	0.45
9	Kiriella	1	1	0.47	0.47	1	0.47
10	Kuruwita	1	1	0.24	0.24	1	0.24
11	Kolonna	1	1	1.03	1.03	1	1.03
12	Godakawela	1	1	1.02	1.02	1	1.02
13	Nivithigala	1	1	0.28	0.28	1	0.28
14	Pelmadulla	1	1	0.19	0.19	1	0.19
15	Balangoda	1	1	0.16	0.16	1	0.16
16	Ratnapura	1	1	0.23	0.23	1	0.23
17	Weligepola	1	1	0.19	0.19	1	0.19
<b>Total</b>		<b>Total</b>	<b>17</b>	<b>6.49</b>	<b>6.49</b>	<b>17</b>	<b>6.49</b>

ඉඹුල්පේ



බලංගොඩ



කොළොන්න



ගොඩකවෙල



➤ **Projects Implemented under Ministry of Fisheries & Water Resources  
Development and Rural Economy**

❖ **Traditional Handicraft Industrial villages Development Programme -2018**

S. No.	Divisional Secretariat	Total No. of Approved Programme	No. of Implemented Project	Provisions (Rs.m.)	Value of the Implemented Projects (Rs.m.)	Physical Progress		Provisions (Rs.m.)	Physical Progress(%)
						Finished	Partially Finished		
1	Kalawana	1	1	0.23	0.23	1		0.22	100
2	Kuruwita	1	1	0.03	0.03	1		0.03	100
3	Pelmadulla	1	1	0.35	0.35	1		0.34	100
4	Eheliyagoda	1	1	0.07	0.07	1		0.07	100
5	Godakawela	1	1	0.36	0.36	1		0.35	100
<b>Total</b>		<b>5</b>	<b>5</b>	<b>1.04</b>	<b>1.04</b>	<b>5</b>		<b>1.01</b>	<b>100</b>

❖ **“Wewak Samaga Gamak” Development Programme – 2018**

S. No.	Divisional Secretariat	Total No. of Approved Programme	No. of Implemented Project	Provisions (Rs.m.)	Value of the Implemented Projects (Rs.m.)	Physical Progress		Exp. as at 2018.12.31 (Rs.m.)	Value of bills in hand (Rs.m)
						Finished	Partially Finished		
1	Imbulpe	1	1	2.00	2.00	1		2.00	
2	Embilipitiya	4	4	4.25	4.25	4		0.88	3.37
<b>Total</b>		<b>5</b>	<b>5</b>	<b>6.25</b>	<b>6.25</b>	<b>5</b>		<b>2.00</b>	<b>3.37</b>

❖ “Kithul “ Development Project - 2018

S. No.	Divisional Secretariat	Total No. of Approved Programme	No. of Implemented Project	Provisions (Rs.m.)	Value of the Implemented Projects (Rs.m.)	Physical Progress		Provisions (Rs.m.)	Physical Progress (%)
						Finished	Partially Finished		
1	Ayagama	2	2	0.67	0.67	2		0.66	100
2	Eheliyagoda	1	1	0.15	0.15	1		0.13	100
3	Imbulpe	1	1	0.20	0.20	1		0.20	100
4	Kiriella	1	1	0.03	0.03	1		0.03	100
5	Nivithigala	1	1	0.31	0.31	1		0.30	100
6	Balangoda	1	1	0.20	0.20	1		0.20	100
<b>Total</b>		<b>7</b>	<b>7</b>	<b>1.56</b>	<b>1.56</b>	<b>7</b>		<b>1.53</b>	<b>100</b>

➤ **Projects Implemented under Ministry of City Planning and Water Supply**

❖ **Rathnapura - District Development Special Projects**

S. No	GN Division	Project Name	Commence Day	Expenditure as at 2017.12.31	2018 Allocation (Rs.mn)	Exp. as at 2018.12.31	Value of bills in hand (Rs.mn)	Cumulative Exp.
1	<b>Palabaddala</b>	Construction of Sri Pada rest house at Sri Palabaddala town	2017.10.11	7.881	26.576	15.287	11.288	23.168
2		Laying inter-locks on the Sri pada rest house premises	2018.12.27		2.342		2.211	
3		Construction of entrence road to Sri Pada rest house.	2018.12.27		2.084		1.898	
<b>Total</b>				<b>7.881</b>	<b>31.002</b>	<b>15.287</b>	<b>15.398</b>	<b>23.168</b>



**Construction of Sri Pada rest house at Sri Palabaddala town**



**Construction of Sri Pada rest house at Sri Palabaddala town**

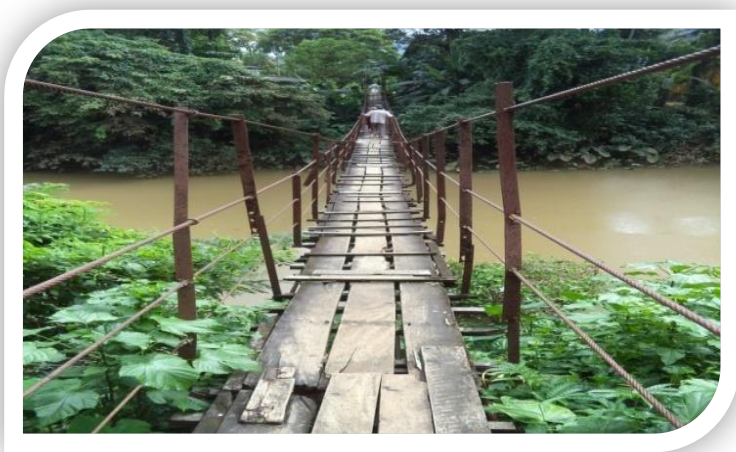


**Construction of entrence road to Sri Pada rest house.**

**Demuwawatha Bridge Project implemented under  
Ratnapura District**

**Aggregate expenditure for Demuwawatha Bridge = Rs.mn.182.11**

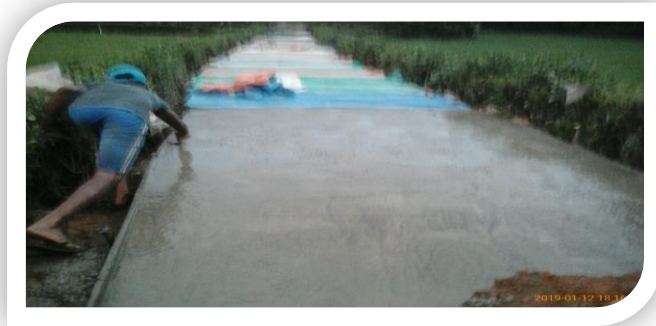
**Before**



**After**



**Carpeting Roads  
Concreting Ratala Kanaththawatta road at Pahalagama, Theppanawa  
- Kuruwita D.S.**



**Repair of damaged parts of Mahingoda  
Mahar main road -  
Eheliyagoda D.S. Division**

**Concreting Demalaporuwa Mahawatta by  
road -  
Elapatha D.S. Division**

➤ **Projects Implemented under Ministry of Disaster Management and Resettlement**

❖ **On-going Projects**

**Resettlement Programme 2017-2018 (Vote of Expenditure 106-02-04-12-2202)**

Ratnapura District	No. of families to be resettled				Resettlement under alternative opportunities											Provisions allocated to Divisional Secretaries (Rs.)	No. of families currently received a block of land or already possess a land to build a house	No. of families who have commenced construction of houses (Intallment provided)			
	Flood	Earthslips	Over susceptible for Earthslips	Total	1		2		3		4		Other					Unwilling to settle in another place	First Installment	Second Installment	Third Installment
	A	B	C	D	E		F		G		H		I		J	K	L	M	N	O	P
Grand Total	232	226	1,466	1,924	77	31	499	336	863	345	104	59	28	27	156	608,230,082	802	467	316	208	62
Q Total Expenditure (Rs.)																522,763,335					
R Balance amount (Rs.)																85,466,747					

❖ Facilitating Senehe Siyapatha village at Didda, Bopeththa in Eheliyagoda with Main Road and Drainage System



**❖ Development of Infrastructure Facilities in State Lands utilized for Resettlement**

(Rs.cts)

S.No.	D.S. Division	G.N. Division	Description	Estimated amount	Allocated Amount	Cumulated Progress	Cumulated Expenditure	Bills in hand	Saving
1	Kuruwita	Pathberiya	For dividing into plots and demarcating boundaries to the land Meegastenna , Pathberiya	53,250.00	53,250.00	100%	53,199.50		50.5
	Kuruwita	Pathberiya	For constructing entrence to the land,by roads and drainage sysstem	1,347,985.16	1,347,985.16	100%	1,347,343.16		642
2	Eheliyagoda	Bopeththa Didda	Providing water for Senehe Siyapatha village in Pelengahadeniya Waththa	1,200,000.00	1,200,000.00	88%	1,058,277.04		141,722.96
	Eheliyagoda	Bopeththa Didda	Construction of main road and drainage system in Senehe Siyapatha village in Pelengahadeniya Waththa	2,000,000.00	2,000,000.00	34%		673,163.57	1,326,836.43
	Eheliyagoda	Bopeththa Didda	Construction of internal road and drainage systems in Senehe Siyapatha village in Pelengahadeniya Waththa	2,000,000.00	2,000,000.00	27%		546,977.43	1,453,022.57
	Eheliyagoda	Karandana North	Development of roads in housing scheme at Karandana North	750,000.00	750,000.00	93%		700,000.00	50,000.00
	Eheliyagoda	Karandana North	Water supply for housing scheme at Karandana North	1,100,000.00	1,100,000.00	57%		622,968.77	477,031.23
	Eheliyagoda	Iddamalgoda	Constructing Somisandawatta road and drainage system	4,300,000.00	4,300,000.00	100%		4,300,000.00	-
3	Nivithigala	Dombagammana	Development of road in Dombagammana housing scheme	637,229.23	637,229.23	100%	637,229.23		-
	Nivithigala	Dombagammana	Constructiona 03 culverts along the entrence road to Dombagammana housing scheme	295,997.24	295,997.24	100%	295,875.28		121.96
	Nivithigala	Dombagammana	Concreting difficult places on the road to Dombagammana housing scheme	1,003,752.90	1,003,752.90	100%	1,000,322.65		3,430.25
<b>Grand Total</b>				<b>14,688,214.53</b>	<b>14,688,214.53</b>	<b>30%</b>	<b>4,392,246.86</b>	<b>6,843,109.77</b>	<b>3,452,857.90</b>

❖ Safety Centre Development - 2018

D.S. Division	G.N. Division	Name of the Safety Centre	Proposed activities	Allocated Amount (Rs.)	Cumulated Progress (Rs.)	Cumulated Expenditure (Rs.)	Bills in hand (Rs.)	Saving (Rs.)
Kalawana	Delgoda East	Community hall at Delgoda East	04 lavatories, construction of bath, laying water line system and erecting a water tank, upgrading facilities for women and children	1,000,000.00	88%	0	877,927.05	122,072.95
Kahawatta	Yatagara	Sewa Piyasa, Yatagara	Providing lavatory and water facilities	500,000.00	97%	202,202.21	283,273.45	14,524.34
Kahawatta	Bungiriya	Nalandarama temple	Providing lavatory facilities	500,000.00	92%	460,940.86		39,059.14
Ayagama	Ketepola	Ketepola Abhinawarama Temple	Construction of a lavatory system	169,369.93	90%	152,583.23		16,786.70
Imbulpe	Waleboda North	Waleboda Tamil Vidyalaya	Obtaining a lavatory system, water tank and 05 Nos. of folding mattresses	187,000.00	100%	10,000.00	177,000.00	
Imbulpe	Muththettuwegama/Puwakgahawela	Karagasthalawa Sri Shailatharama temple	Obtaining a lavatory system, water tank and 05 Nos. of folding mattresses	187,000.00	100%	10,000.00	177,000.00	
Imbulpe	Muththettuwegama/Puwakgahawela	Sarvodaya building, Puwakgahawela	Obtaining a lavatory system and water tank	66,000.00	100%	-	66,000.00	
Imbulpe	Udagama	Udagama Sri Priyadarshanaramaya	Construction of lavatory system	302,000.00	100%	-	302,000.00	
Kuruwita	Pathberiya	Bodhiraja Temple	Development of basic facilities.(repairing the building, fixing doors and windows, obtaining electricity)	935,038.43	100%	935,038.43		-
Kuruwita	Millawitiya	Sri Vidyawardhana Pirivena	Development of basic facilities.(repairing the building, , obtaining water and electricity))	616,743.73	100%	610,743.73		6,000.00
Kuruwita	Ekneligoda	Maha Sheela Yogashramaya	Development of basic facilities.(repairing the building, obtaining electricity)	597,700.55	100%	597,700.55		-
Kuruwita	Amuhenkanda	Sri Wimalaramaya	Development of basic facilities.(repairing the building and the roof, obtaining water and electricity )	624,446.46	100%	547,735.11		76,711.35
<b>Grand Total</b>				<b>5,685,299.10</b>	<b>95%</b>	<b>3,526,944.12</b>	<b>1,883,200.50</b>	<b>275,154.48</b>

❖ On-going projects under the Ministry of Disaster Management and Resettlement



Upgrading lavatory facilities of Bungiriya  
Nalandarmaya at Kahawatta  
Estimated Amount (Rs.) 460,940.86

Ayagama- Gawaragiriya

➤ **Projects Implemented under Ministry of Irrigation and Water Resources Management**

❖ **On going Projects**

❖ **Climate Resilience Improvement Project (CRIP) -2018**

S. No.	Divisional Secretariat	Total No. of Approved Programme	No. of Implemented Project	Provisions (Rs.m.)	Value of the Implemented Projects (Rs.m.)	Physical Progress		Financial Progress	Number of Beneficiaries
						Finished	Partially finished		
1	Ayagama	1	1	10.855	10.855		1	10.89	10,000
2	Elapatha	3	3	110.19	110.19		3		30,000
3	Nivithigala	1	1	7.01	7.01		1		15,000
4	Pelmadulla	2	2	25.44	25.44		2	1.79	35,000
5	Ratnapura	2	2	57.702	57.702		2		40,000
<b>Total</b>		<b>9</b>	<b>9</b>	<b>211.197</b>	<b>211.197</b>	<b>0</b>	<b>9</b>	<b>12.68</b>	<b>130,000</b>



**Construction of Kotamulla-Amuwela Road DS-Elapatha**



**Construction of Gabian at Thiriwanaketiya. –DS Nivithigala**



➤ Projects Implemented under Ministry of Major City and Western Development

❖ “SukithaPurawara” Small City Development and “Shilal Dehana” programme-2018

S. No.	Divisional Secretariat	Total No. of Approved Programme	No. of Implemented Project	Provisions (Rs.m.)	Value of the Implemented Projects (Rs.m.)	Physical Progress		Financial Progress	Values of Bills in hand (Rs.)	No. of Beneficiaries
						Finished	Partially finished			
1	Ayagama	3	2	1.50	1.00	2		0.96		175
2	Elapatha	3	2	1.50	1.00	2		0.90		1,750
3	Eheliyagoda	2	2	0.40	0.40	2		0.39	0.007	96
4	Embilipitiya	5	5	3.05	3.05	5		1.50	0.87	675
5	Imbulpe	3	2	3.00	1.00	2		0.99		500
6	Opanayake	2	1	0.80	0.50	1		0.49		67
7	Kalawana	1	1	0.50	0.50	1			0.5	102
8	Kahawatta	3	2	1.50	1.00	2		1.00		112
9	Kiriella	4	1	1.80	0.50	1		0.49		4,000
10	Kuruwita	4	4	1.83	1.83	4		0.53	1.1	2,225
11	Kolonna	4	2	1.60	0.60	2		0.31	0.28	220
12	Godakawela	6	6	2.80	2.80	6		2.69		1,340
13	Nivithigala	3	3	1.50	1.50	3		1.37		423
14	Pelmadulla	23	14	12.45	6.70	14		6.40		10,113
15	Balangoda	2	2	1.00	1.00	2		0.99		825
16	Ratnapura	21	17	9.85	7.85	17		0.70	6.66	5,260
17	Weligepola	3	2	1.48	0.98	2		0.98		320
<b>Total</b>		<b>92</b>	<b>68</b>	<b>46.57</b>	<b>32.22</b>	<b>68</b>		<b>20.68</b>	<b>9.42</b>	<b>28,203</b>

➤ **Special Projects Implemented under Other Ministries**

❖ **Department of Sports Development**  
**Rural Playground Development Programme-2018**

S. No.	Divisional Secretariat	Total No. of Approved Programme	No. of Implemented Project	Provisions (Rs.m.)	Value of the Implemented Projects (Rs.m.)	Physical Progress		Financial Progress	Values of Bills in hand (Rs.)	No. of Continuation Work	Valu of Continuation Work	No. of Beneficiaries
						Finished	Partially finished					
1	Pellmadulla	1	1	6.35	6.35		1	3.54		1	3.93	150
<b>Total</b>		<b>1</b>	<b>1</b>	<b>6.35</b>	<b>6.35</b>		<b>1</b>	<b>3.54</b>		<b>1</b>	<b>3.93</b>	<b>150</b>

❖ **Ministry of Sustainable Development & Wildlife and Divisional Development**  
**Divisional InfrastructureDevelopment programme -2018**

S. No.	Divisional Secretariat	Total No. of Approved Programme	No. of Implemented Project	Provisions (Rs.m.)	Value of the Implemented Projects (Rs.m.)	Physical Progress		Financial Progress	Values of Bills in hand (Rs.)	No. of Beneficiaries
						Finished	Partially finished			
1	Godakawela	4	4	2.50	2.50	4		2.46		1,655
2	Opanayake	2	2	0.97	0.97	2		0.49	0.42	180
3	Weligepola	3	3	1.49	1.49	3		1.48		869
<b>Total</b>		<b>9</b>	<b>9</b>	<b>4.96</b>	<b>4.96</b>	<b>9</b>		<b>4.43</b>	<b>0.42</b>	<b>2,704</b>

## ➤ Livelihood Development

### ❖ Divineguma Development Programme

Programme such as Samurdhi Banks, Livelihood Development, Housing lotteries, Divineguma social security fund and Spritual development programme were implemented during the year 2018, in view of upgrading the living standard of people who earn lower income.

### ❖ Samurdhi Bank Programme

Se.No	Type of Deposit	Number of Deposit	Amount of Deposit (Rs.m.)
01	Share Deposits	257,808	1,124,762
02	Membership Deposits	263,218	1,465,275
03	Group Deposits	35,033	810,580
04	Diriyamatha Deposit	81,501	218,434
05	Non Membership Deposit	52,558	312,739
06	Sisureka Deposit	13,188	29,329
07	Child Deposit	94,817	236,034
08	Mandatory savings	177,244	3,647,711
09	Fixed Deposits	56	3,300

❖ **Samurdhi Bank Loan**

<b>Se.No</b>	<b>Type of Loan</b>	<b>Number of Loan</b>	<b>Amount of Loan (Rs.)</b>
01	Self-employment loan	293,783	5,621,451,657.00
02	Janapubudu loan	15,115	567,959,044.50
03	Cultivation loan	46,894	448,713,042.00
04	Swashakthi loan	4,675	236,855,374.00
05	fisheries	206	3,196,500.00
06	“Gedara” loan	51,186	2,026,078,513.00
07	Mihijaya loan	199	10,745,490.00
08	Kirula Development loan	101	22,344,932.00
09	Livelihood loan	6,713	319,723,067.07
10	Compensation loan	157,211	1,066,784,048.00
11	Distress loan	35,198	273,123,108.00
12	Yovun Diriya loan	4	206,400.00
13	Rata viruwo loan	752	224,423,139.00
14	Divineguma Sahana Aruna	8,831	311,039,288.00
15	Divineguma Diriya Saviya	991	80,042,000.00
16	Livelihood Development	42,570	3,334,292,091.00
17	Household Infrastructure Development	26,700	2,060,979,060.00
18	Urgent Business loan	878	9,970,000.00
19	Ran Pradeepa loan	176	4,019,000.00
20	Divineguma ‘Arunalu’ Fast Loan	4	390,000.00
	<b>Total</b>	<b>692,187</b>	<b>16,622,335,753.57</b>

❖ **Housing Lottery Programme**

Se. No.	Divisional Secretariat	Number of winners	Amount Rs.
1	Eheliyagoda	12	2,400,000.00
2	Kuruvita	12	2,400,000.00
3	Kiriella	11	2,200,000.00
4	Rathnapura	11	2,200,000.00
5	Imbulpe	12	2,400,000.00
6	Balangoda	12	2,400,000.00
7	Opanayaka	11	2,200,000.00
8	Pelmadulla	12	2,400,000.00
9	Elapatha	12	2,400,000.00
10	Ayagama	12	2,400,000.00
11	Kalawana	12	2,400,000.00
12	Nivithigala	11	2,200,000.00
13	Kahawatta	12	2,400,000.00
14	Godakawela	10	2,000,000.00
15	Weligepola	12	2,400,000.00
16	Embilipitiya	12	2,400,000.00
17	Kolonna	12	2,400,000.00
<b>Total</b>		<b>198</b>	<b>39,600,000.00</b>

❖ Social Development Programme

S. No.	Divisional Secretariat	Diriya piyasa Houses			Drug Prevention		Conselling Admin. Expenses		Child Society leadership and Libraries		Haritha Uyana Programme		Kekulu Societies - Conducting Competitins		total	
		No.	allocated amount Rs.	Expenditure Rs.	allocated amount Rs.	Expenditure Rs.	allocated amount Rs.	Expenditure Rs.	allocated amount Rs.	Expenditure Rs.	allocated amount Rs.	Expenditure Rs.	allocated amount Rs.	Expenditure Rs.	allocated amount Rs.	Expenditure Rs.
1	Kuruwita	3	600,000.00	600,000.00	48,000.00		25,000.00	24,750.00	25,000.00		80,000.00	80,000.00			778,000.00	704,750.00
2	Nivithigala	3	600,000.00	600,000.00	24,000.00	23,760.00	25,000.00	24,750.00	25,000.00	24,750.00	40,000.00	40,000.00			714,000.00	713,260.00
3	Godakawela	3	600,000.00	600,000.00	24,000.00		25,000.00	21,428.00	25,000.00		241,400.00	241,400.00			915,400.00	862,828.00
4	Balangoda	2	400,000.00	400,000.00	48,000.00	46,400.00	25,000.00	24,375.00	25,000.00	24,375.00	180,000.00	180,000.00			678,000.00	675,150.00
5	Kalawana	3	600,000.00	600,000.00	24,000.00	23,400.00	25,000.00	24,375.00	25,000.00		32,000.00	32,000.00			706,000.00	679,775.00
6	Imbulpe	3	600,000.00	600,000.00	24,000.00		25,000.00		25,000.00	24,375.00	160,000.00	160,000.00	36,000.00	36,000.00	870,000.00	820,375.00
7	Ayagama	3	600,000.00	600,000.00	24,000.00	23,760.00	25,000.00	24,750.00	25,000.00	24,750.00	116,600.00	116,600.00			790,600.00	789,860.00
8	Kahawatta	2	400,000.00	400,000.00	24,000.00	32,890.00	25,000.00	24,375.00	50,000.00	49,375.00	130,000.00	130,000.00		5,500.00	629,000.00	642,140.00
9	Opanayake	3	600,000.00	600,000.00	24,000.00	23,760.00	25,000.00	24,375.00	25,000.00	24,375.00	180,000.00	180,000.00	11,500.00	11,500.00	865,500.00	864,010.00
10	Eheliyagoda	3	600,000.00	600,000.00	24,000.00		25,000.00	19,750.00	25,000.00	22,216.00	24,000.00	24,000.00	6,000.00	6,000.00	704,000.00	671,966.00
11	Weligepola	5	1,000,000.00	1,000,000.00	24,000.00		25,000.00		25,000.00	24,750.00	170,000.00	170,000.00			1,244,000.00	1,194,750.00
12	Kolonna	3	600,000.00	600,000.00	24,000.00	23,180.00	25,000.00	24,375.00	25,000.00	24,375.00	44,000.00	44,000.00			718,000.00	715,930.00
13	Pelmadulla	3	600,000.00	600,000.00	48,000.00	3,230.00	25,000.00	3,645.00	50,000.00	48,590.00	180,000.00	180,000.00	20,000.00	20,000.00	923,000.00	855,465.00
14	Elapatha	3	600,000.00	600,000.00	24,000.00	23,400.00	25,000.00	24,375.00	25,000.00	24,375.00	90,000.00	90,000.00	36,000.00	36,000.00	800,000.00	798,150.00
15	Ratnapura	3	600,000.00	600,000.00	24,000.00		25,000.00		50,000.00	49,368.65	40,000.00	40,000.00	11,500.00	11,500.00	750,500.00	700,868.65
16	Kiriella	3	600,000.00	600,000.00	24,000.00	23,760.00	25,000.00	24,750.00	25,000.00	24,750.00	28,000.00	28,000.00			702,000.00	701,260.00
17	Embilipitiya	3	600,000.00	600,000.00	48,000.00	43,775.00	25,000.00		25,000.00	24,375.00	264,000.00	264,000.00		4,000.00	962,000.00	936,150.00
18	District Sec.							9,366.00	95,000.00	94,987.00			170,000.00	169,942.50	265,000.00	274,295.50
<b>Total</b>		<b>51</b>	<b>10,200,000.00</b>	<b>10,200,000.00</b>	<b>504,000.00</b>	<b>291,315.00</b>	<b>425,000.00</b>	<b>299,439.00</b>	<b>595,000.00</b>	<b>509,786.65</b>	<b>2,000,000.00</b>	<b>2,000,000.00</b>	<b>291,000.00</b>	<b>300,442.50</b>	<b>14,015,000.00</b>	<b>13,600,983.15</b>

❖ “Samurdhi Arunalu” Small and Medium Scale Projects - Progress 2018

S.No.	Divisional Secretariat	Approved provision (Rs.)	Number of Beneficiaries Expected to empower	Finished Project	Agri Development Programme		Animal Husbandry programme		Fisheries Development Programme		Industry Development		Job oriented Vocational Training Courses		Number of Beneficiaries Expected to empower	Total	
					Expenditure (Rs.)	Contribution of Beneficiaries	Expenditure (Rs.)	Contribution of Beneficiaries	Expenditure (Rs.)	Contribution of Beneficiaries	Expenditure (Rs.)	Contribution of Beneficiaries	Expenditure (Rs.)	Contribution of Beneficiaries		No of Projects in operation	Expenditure (Rs.)
1	Ayagama	1,260,000.00	58	58	623,800.00	274,900.00					629,900.00	483,819.00			58	1,253,700.00	758,719.00
2	Balangoda	2,025,000.00	66	66	834,513.00	608,388.00	30,420.00	19,980.00			746,461.00	509,347.00			66	1,611,394.00	1,137,715.00
3	Eheliyagoda	1,845,000.00	43	43	212,535.00	28,365.00					1,428,340.89	1,413,000.00			43	1,640,875.89	1,441,365.00
4	Elapatha	1,485,000.00	43	43	129,706.85	230,000.00					1,347,868.15	2,379,379.00			43	1,477,575.00	2,609,379.00
5	Embilipitiya	3,600,000.00	92	92	1,317,898.00	1,628,400.00			132109	110000	1,951,993.00	2,703,000.00	180,000.00	30,000.00	92	3,582,000.00	4,471,400.00
6	Godakawela	2,745,000.00	61	63	231,070.00	14,771.00	40,000.00	600.00			2,335,226.00	625,524.00			63	2,606,296.00	640,895.00
7	Imbulpe	1,980,000.00	57	57	1,390,360.00	1,096,312.00					589,520.00	551,572.00			57	1,979,880.00	1,647,884.00
8	Kahawatta	1,440,000.00	35	32							1,432,800.00	212,878.00			32	1,432,800.00	212,878.00
9	Kalawana	1,260,000.00	32	31	650,349.40	100.00					560,000.00	196,050.00			31	1,210,349.40	196,150.00
10	Kolonna	1,530,000.00	40	40	280,250.00	73,510.00	132,975.00	20,675.00			942,450.25	137,595.00			40	1,355,675.25	231,780.00
11	Kuruwita	3,195,000.00	104	95	347,208.00	182,725.00	197,055.00	50,600.00			2,534,762.00	882,933.00	100,000.00	15,000.00	95	3,179,025.00	1,131,258.00
12	Nivithigala	1,665,000.00	57	57	193,965.00	33,824.00					1,438,252.50	437,836.00	17,425.00		57	1,649,642.50	471,660.00
13	Opanayake	990,000.00	35	35	229,092.24	151,216.00	143,531.10	100,797.00			612,426.66	595,477.20			35	985,050.00	847,490.20
14	Pelmadulla	3,060,000.00	83	83	1,092,640.08	296,050.00	73,000.00	10,000.00			1,632,275.11	373,420.00			83	2,797,915.19	679,470.00
15	Ratnapura	2,700,000.00	70	10							293,313.15	273,377.00			10	293,313.15	273,377.00
16	Weligepola	1,170,000.00	30	30	81,725.89	2,135.00					1,082,424.11	342,364.25			30	1,164,150.00	344,499.25
17	Kiriella	1,350,000.00	42	40	534,950.00	109,729.00	45,000.00				763,300.00	248,555.00			40	1,343,250.00	358,284.00
	<b>Grand Total</b>	<b>33,300,000.00</b>	<b>948</b>	<b>875</b>	<b>8,150,063.46</b>	<b>4,730,425.00</b>	<b>4,730,425.00</b>	<b>202,652.00</b>	<b>132,109.00</b>	<b>110,000.00</b>	<b>20,321,312.82</b>	<b>12,366,126.45</b>	<b>297,425.00</b>	<b>45,000</b>	<b>875</b>	<b>29,562,891.38</b>	<b>17,454,203.45</b>

❖ **Samurdhi Production Model Villages**

<b>Divisional Secretariat</b>	<b>Name of the Village</b>	<b>Programme</b>	<b>No. of projects in operation</b>	<b>No. of Completed Projects</b>	<b>Provisions (Rs.)</b>	<b>Expenditure (Rs.)</b>	<b>No. of Beneficiaries</b>	<b>No. of persons empowered</b>
Embilipitiya	Panahaduwa	Agri/Animal husbandry/Industries and Services/ Marketing	35	23	2,375,000.00	1,092,500.00	112,422.00	15
Weligepola	Hatangala		123	65	3,980,000.00	1,457,550.15	127,200	
Opanayake	Opanayake		224	156	2,454,435.99	1,691,120.20	1,140,101	
<b>Total</b>			<b>382</b>	<b>244</b>	<b>8,809,435.99</b>	<b>4,241,170.35</b>	<b>1,379,723</b>	<b>15</b>

❖ Social Security Fund

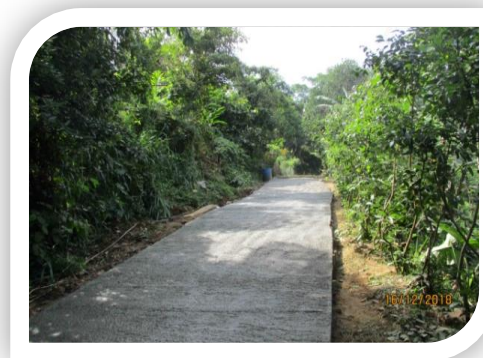
Divisional Secretariat	Births		Marriages		Diseases		Deaths		Sipdora				Twin Births		S.S.C.Bata		other	Total		
	Rs. 7500		Rs. 7500																	
	ඌ	Amount (Rs)	ඌ	Amount (Rs.)	ඌ	Amount (Rs)	ඌ	Amount (Rs)	ඌ	Amount (Rs)	ඌ	Amount (Rs)	ඌ	Amount (Rs)	ඌ	Amount (Rs)	Amount (Rs.)	Amount (Rs.)	ඌ	Amount (Rs)
Dist. Sec.														-		-				
Eheliyagoda	14	105,000.00	116	870,000.00	233	603,750.00	149	2,235,000.00	242	363,000.00	435	652,500.00	46	230,000.00	2	1,774.60	107,735.77	1237	5,168,760.37	
Kuruvita	30	225,000.00	188	1,410,000.00	369	1,101,000.00	232	3,480,000.00	493	739,500.00	425	637,500.00	31	155,000.00	12	9,108.99	170,738.78	1780	7,927,847.77	
Kiriella	9	67,500.00	95	712,500.00	208	556,500.00	111	1,665,000.00	202	303,000.00	220	330,000.00	18	90,000.00	3	7,332.00	71,534.32	866	3,803,366.32	
Rathnapura	28	210,000.00	195	1,462,500.00	302	978,000.00	224	3,360,000.00	537	805,500.00	529	793,500.00	55	275,000.00	0	-	178,254.51	1870	8,062,754.51	
Imbulpe	21	157,500.00	123	922,500.00	256	739,500.00	165	2,475,000.00	406	609,000.00	392	588,000.00	115	575,000.00	2	2,000.00	131,430.02	1480	6,199,930.02	
Balangoda	27	202,500.00	143	1,072,500.00	291	803,000.00	161	2,415,000.00	259	388,500.00	211	316,500.00	38	190,000.00	0	-	118,971.09	1130	5,506,971.09	
Opanayaka	15	112,500.00	58	435,000.00	155	437,250.00	91	1,365,000.00	335	502,500.00	81	121,500.00	10	50,000.00	2	1,820.00	63,862.65	747	3,089,432.65	
Pelmadulla	40	300,000.00	184	1,380,000.00	369	1,005,500.00	256	3,840,000.00	393	589,500.00	454	681,000.00	73	365,000.00	1	490.00	182,364.52	1770	8,343,854.52	
Elapatha	21	157,500.00	150	1,125,000.00	255	716,000.00	128	1,920,000.00	225	337,500.00	402	603,000.00	29	145,000.00	0	-	115,250.65	1210	5,119,250.65	
Ayagama	15	112,500.00	75	562,500.00	108	306,750.00	99	1,485,000.00	223	334,500.00	169	253,500.00	0	-	11	17,481.10	71,543.86	700	3,143,774.96	
Kalawana	11	82,500.00	94	705,000.00	118	357,000.00	85	1,275,000.00	211	316,500.00	323	484,500.00	5	25,000.00	2	2,040.00	66,581.91	849	3,314,121.91	
Nivithigala	12	90,000.00	182	1,365,000.00	252	721,250.00	188	2,820,000.00	169	253,500.00	400	600,000.00	12	60,000.00	1	820.00	139,070.66	1216	6,049,640.66	
Kahawatta	34	255,000.00	148	1,110,000.00	170	504,750.00	123	1,845,000.00	175	262,500.00	454	681,000.00	18	90,000.00	12	25,590.00	103,438.14	1134	4,877,278.14	
Godakawela	63	472,500.00	212	1,590,000.00	382	1,159,500.00	250	3,750,000.00	189	283,500.00	666	999,000.00	57	285,000.00	0	-	197,439.03	1819	8,736,939.03	
Weligepola	44	330,000.00	104	780,000.00	226	597,500.00	95	1,425,000.00	260	390,000.00	238	357,000.00	40	200,000.00	11	10,900.00	75,562.82	1018	4,165,962.82	
Embilipitiya	31	232,500.00	305	2,287,500.00	601	1,767,500.00	266	3,990,000.00	513	769,500.00	409	613,500.00	55	275,000.00	4	9,264.00	225,613.78	2184	10,170,377.78	
Kolonna	9	67,500.00	106	795,000.00	299	817,000.00	143	2,145,000.00	401	601,500.00	342	513,000.00	26	137,500.00	1	1,114.00	118,963.41	1327	5,196,577.41	
<b>Total</b>	<b>424</b>	<b>3,180,000.00</b>	<b>2478</b>	<b>18,585,000.00</b>	<b>4594</b>	<b>13,171,750.00</b>	<b>2766</b>	<b>41,490,000.00</b>	<b>5233</b>	<b>7,849,500.00</b>	<b>6150</b>	<b>9,225,000.00</b>	<b>628</b>	<b>3,147,500.00</b>	<b>64</b>	<b>89,734.69</b>	<b>2,316,665.92</b>	<b>22337</b>	<b>99,055,150.61</b>	

❖ Development of Infrastructure Facilities in remote villages where Samurdhi Beneficiaries Live -2018

S. No.	Divisional Secretariat	Total No. of Approved Programme	No. of Implemented Project	Provisions (Rs.m.)	Value of the Implemented Projects (Rs.m.)	Physical Progress		Financial Progress (Rs.m.)	Value of bills in hand (Rs.m)	Benifisherries
						Finished	Partially finished			
01	Kolonna	3	3	6.00	6.00	3		0.09	5.82	450
<b>Total</b>		<b>3</b>	<b>3</b>	<b>6.00</b>	<b>6.00</b>	<b>3</b>		<b>0.09</b>	<b>5.82</b>	<b>450</b>



Construction of Galpoththa  
– Henyaya Road



development of Deweddana kanda –  
Kabaragala Road



Renovation of Jathunkanda road

❖ National Celebrations Conducted at District Level by the District Secretariat -2018

71<sup>st</sup> National Day Celebration



Commemoration of Srimath Anagarika Dharmapala



National Pensioners' Day



District Women's Day Celebration



National Safety Day Programme



Government Service District athletic festival



## ❖ Effective Programmes Implemented under District Secretariat Ratnapura -2018

One day service for Registration of Lands

Capacity building Programme for Grama Niladari in Ratnapura District

Exhibition and fair of Ruwanapura women's Products



Promotion of National Coconut Cultivation

Scholarship award of District Child Development Foundation

“ Jack Tree 1,000,000” programme



**Opening the market for toxin free gardening products from farming women in Ratnapura**



**“Thurunu Saviya” Loan Proggmme**



## CHAPTER THREE

---

❖ Expenditure under Line Ministries and Department -2018

Ministry/ Department	Head	Capital -2018		Recurrent -2018	
		Provision (Rs.)	Expenditure (Rs.)	Provision (Rs.)	Expenditure (Rs.)
Presidential Secretariat	1	119,761,732.70	82,576,090.38	-	-
Ministry of Buddha Sasana	101	47,497,669.18	39,113,630.36	25,000.00	19,400.00
Ministry of National Policies and Economic Affairs	104	2,530,151,974.58	1,044,027,332.43	9,320,050.00	6,757,370.97
Ministry of Disaster Management	106	718,378,782.15	640,267,048.00	97,266,657.15	86,472,520.38
Ministry of Justice	110	1,004,580.65	959,673.87	10,860,150.00	10,477,662.00
Ministry of Health Nutrition and Indigenous Medicine	111	440,000.00	-	511,955.00	454,545.20
Ministry of Higher Education and Highways	117	150,000.00	142,550.00	-	-
Ministry of Agriculture	118	831,000.00	197,692.00	38,511,566.25	28,241,927.30
Ministry of Women and Child Affairs	120	7,578,685.06	5,066,897.23	292,919,750.42	287,181,469.56
Ministry of Home Affairs	121	184,412,682.55	138,598,805.81	355,021,538.30	356,715,712.97
Ministry of Land Rehabilitation and Parliament Affairs	122	30,127,155.59	8,557,675.75	158,694,281.00	5,364,589.17
Ministry of Social Empowerment and Welfare	124	1,766,436.00	1,224,193.12	669,079,383.40	655,653,350.29
Ministry of Education	126	126,780,000.00	105,485,557.99	-	-
Ministry of Pub. Admin. And Management	130	824,870.00	577,193.48	1,021,220.00	902,353.87
Ministry of Sports	136	17,619,403.30	11,931,641.95	-	-
Ministry of Hillcountry Villages Infrastructure and Community Development	140	6,533,433.07	6,200,411.04	1,026,461.39	847,441.04
Ministry of Regional Development	147	8,845,974.03	8,230,173.69	-	-
Ministry of Industries and Commerce	149	587,581.83	439,155.67	-	-
Ministry Fisheries and Aquatic Resources	151	12,608,412.42	8,354,770.41	-	-
Ministry of Lands	153	0	0	0	0
Ministry of Rural Economic	154	29,304,995.83	22,288,389.15	-	-
Ministry of Provincial Council and Local Gvt.	155				
Ministry of National Integration, Dialogues and State	157	5,500,367.67	4,761,571.76	7,941,305.28	7,380,167.97
Ministry of Internal Affairs and Wayamba	163	12,541,759.75	7,311,913.11	-	-
Ministry of City Dev. And Water Supply	166	33,938,792.25	17,921,088.24	-	-
Ministry of Foreign Employment	182	226,100.00	224,860.00	22,273,113.00	21,118,173.04
Ministry of Law and Order and Southern Dev.	192	13,725,936.88	12,024,868.61	-	-
Ministry of Telecommunication and Digital	194	1,092,650.00	1,024,055.32	-	-
Ministry of Science, Technology and Research	196	9,734,717.28	8,855,743.14	2,885,567.76	2,489,658.06
Ministry of Skill Dev. And Vocational Training	197	83,700.90	55,815.00	182,960.93	130,172.75
Ministry of Irrigation and Water management	198	58,206,104.39	55,810,384.48	-	-
Dept. of Buddhist Affairs	201	1,198,510.00	884,783.50	32,880,523.37	30,922,472.43
Department of Cultural Affairs	206	-	-	2,319,000.00	2,138,704.55
Department of State Media	210	101220	101000	86700	67315.24
Department of Social Services	216	1,515,803.07	998,499.44	17,038,237.73	16,047,272.52
Dept of Probation and Child Care Services	217	3,652,323.51	3,642,018.33	9,928,335.00	9,994,026.26
Dept. of Sport Development	219	6,356,175.00	517,280.00	596,300.00	3,533,496.25
Dept of Registration of Persons	227	510,000.00	-	15,422,004.50	14,771,192.89
Department of Census and Statistics	252	891,311.35	874,128.49	1,579,517.57	1,450,518.67
Department of Pensions	253	9,750.00	9,750.00	13,017,576.58	12,893,580.19
Dept of Registrar General	254	566,800.00	457,312.45	2,675,350.00	2,257,025.00
Dept. of Agriculture	285	-	-	812,860.00	531,644.00
Land Commissioner General's Dept.	286	-	-	55,150.00	54,130.00
Dept. of Motor Traffic	307	-	-	801,400.00	559,824.15
Department of Community Correction	326	-	-	322,953.00	318,942.75
Dept of Land Use and Policy Planning	327	1,176,460.00	1,176,199.80	457,300.00	452,192.95
Dept of Man Power and Employment	328	860,940.82	684,586.62	741,878.90	720,328.61
<b>Total</b>		<b>3,997,094,791.81</b>	<b>2,241,574,740.62</b>	<b>1,766,276,046.53</b>	<b>1,566,919,181.03</b>

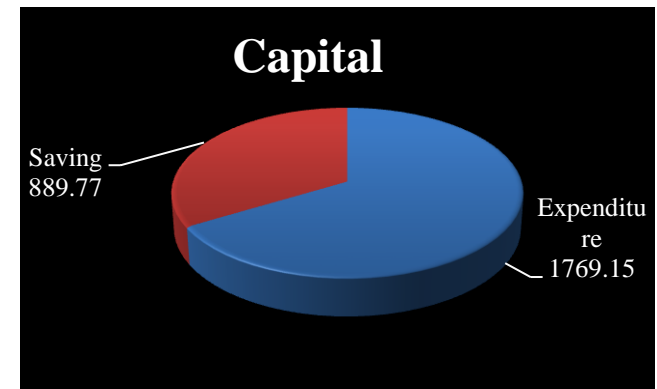
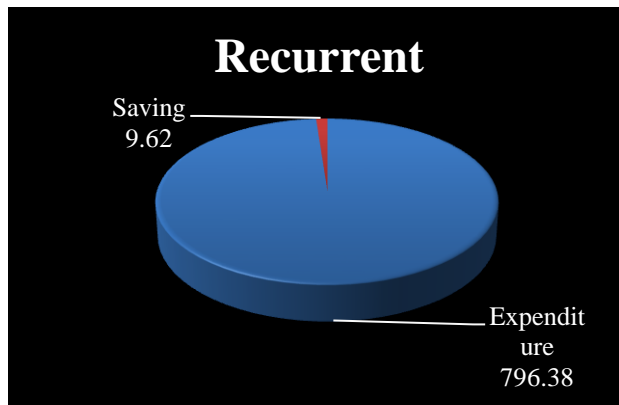
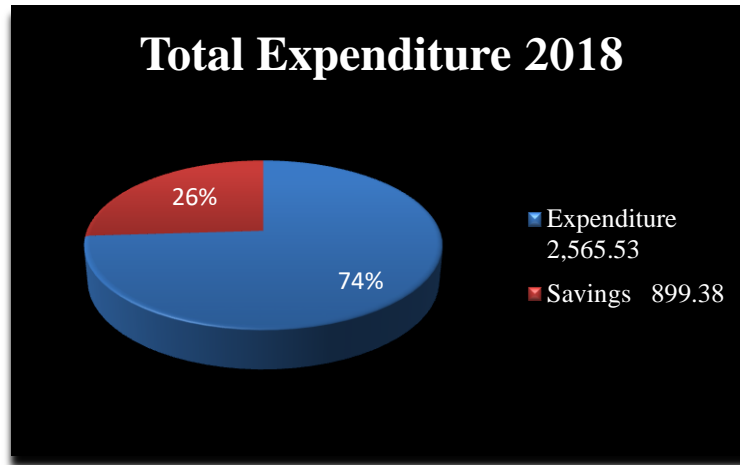
**Outstanding List as at 31.12.2018**

<b>DS/ Rathnapura</b>			
<b>Institute</b>	<b>Vote</b>	<b>Amount(Rs.)</b>	
District Secretariat-Rathnapura	278-1-2-0-1101	623,307.57	
	278-1-2-0-1002	149,425.90	
	278-1-2-0-1403	1,219.70	
Other Ministries & Departments	104-1-2-0-1003	599,333.33	
	104-2-7-0-1409	7,500.00	
	104-2-7-0-1402	20,410.00	
	110	43,750.00	
	106-2-4-1-1501	2,000.00	
	118-2-3-0-1401	50,000.00	
	118-2-3-0-1402	25,590.00	
	120-2-4-1-1501	12,309,890.00	
	120-2-4-1-1501	22,000.00	
	121-1-3-0-1001	217,150.00	
	121	9,231.60	
	122	20,391,184.92	
	124	10,362.50	
	196-2-3-1-1409	16,000.00	
	201-2-2-6-1508	96,800.00	
	201-2-2-0-1201	4,000.00	
	201-2-2-0-1101	27,940.00	
	210-1-2-0-1402	1,407.16	
	216-2-2-0-1101	2,000.00	
	219-2-2-0-1201	29,020.00	
	254-1-2-0-1409	607,675.00	
	307-2-1-0-1302	47,959.00	
	326	2,500.00	
		<b>Recurrent Total</b>	<b>35,319,656.68</b>
	Other Ministries & Departments	001-1-2-6-2509	864,000.00
		001-2-6-10-2509	10,794,720.31
		001-2-6-11-2509	4,691,131.38
		101-2-6-17-2205	3,951,785.95
		101-2-6-7-2205	202,900.00
		101-2-6-8-2205	1,563,127.88
		104-2-6-1-2506	6,022,729.61
		104-2-6-1-2509	3,320.00
104-2-6-18-2509		181,972.14	
104-2-6-6-2506		203,988,629.33	
104-2-6-6-2506		16,704,503.86	
104-2-6-6-2506		34,365,232.94	
104		495,146.44	
104-2-7-13-2202		190,963.00	
104-2-6-18-2509		10,585,809.08	
104-2-6-20-2506		31,197,340.01	
106-2-3-2-2509		253,171.23	
106-2-4-13-2202		1,897,899.10	
106-2-4-12-2202		6,086,000.00	
118-2-3-20-2509		392,000.00	
120-2-3-6-2509		65,934.68	
120-2-4-12-2409		26,000.00	
121-1-2-3-2104		635,898.15	
121-2-4-1-2506		2,306,138.86	
126-2-7-33-2001		1,866,691.97	
126-2-7-33-2104		464,763.00	
136-2-3-1-2506		4,120,834.45	
147-1-2-2-2509		1,822,649.11	
148-1-2-2-2509		8,523,477.30	
151-2-3-60-2506		3,373,276.72	
154-2-3-9-2506		2,856,498.53	
154		1,364,209.54	
162-2-3-41-2506		9,410,289.91	
163-2-3-23-2104	3,738,887.66		
165-1-2-3-2202	4,691,619.06		
166-2-3-33-2506	1,676,047.79		
219-2-2-0-2506	3,500.00		
331-2-2-3-2509	5,818,519.20		
	<b>Capital Total</b>	<b>387,197,618.19</b>	
	<b>Grand Total</b>	<b>422,517,274.87</b>	

## ❖ Collecting Revenue -2018

Revenue Code	Description	Revenue Accounting Officer	Collected Revenue (Rs.)
<b>Domestic Goods &amp; Services Tax</b>			-
10.02.04.00	Telecommunications Regulatory Commission of Sri Lanka –Levy on cellular Towers	Telecommunications Regulatory Commission of Sri Lanka	-
10.02.15.00	Telecommunications Regulatory Commission of Sri Lanka – levy on SMS	Telecommunications Regulatory Commission of Sri Lanka	-
<b>License and other</b>			<b>45,852,937.42</b>
10.03.07.02	Registration fees relevant to the Department of Registrar General's	Registrar General's Department	30,267,250.00
10.03.07.03	Private Timber Transport	Forest Department	619,222.50
10.03.07.04	Tax revenue on sales of motor vehicles	Department of Motor Traffic	1,250.00
10.03.07.05	Licence Taxes relevant to ministry of Defence	Ministry of Defence	1,231,161.80
10.03.07.09	Commissioner General of Motor Traffic-Carbon Tax	Department of Motor Traffic	-
10.03.07.99	Other License Fees	Department of Treasury Operations	13,734,053.12
<b>Tax on Revenue and Profit</b>			
10.04.03.01	Tax on interest	Department of Inland Revenue	
<b>Revenue on Government Properties</b>			<b>11,035,588.87</b>
20.02.01.01	Rent on government building & housing	Ministry of Public Administration	1,558,298.95
20.02.01.03	Rent on land & other	Land Commissioner's Department	174,260.00
20.02.02.99	Other - interest	Department of Treasury Operations	9,303,029.92
<b>Sales and Fees</b>			<b>84,312,504.72</b>
20.03.01.00	Departmental sales	Department of Treasury Operations	24,400.00
20.03.02.13	Examinations & other levy	Commissioner of Examinations	125,500.00
20.03.02.14	Fees under the Motor Traffic Act & other receipts	Department of Motor Traffic	64,692,920.00
20.03.02.03	Registration of persons fees	Dept. of Reg. of Persons	4,336,400.00
20.03.02.06	Forest conservation charges	Forest Conservation	-
20.03.02.99	sundries	Department of Treasury Operations	10,085,901.55
20.03.99.00	Other receipts	Department of Treasury Operations	4,837,961.54
20.03.03.02	Fines and confiscations	Department of Treasury Operations	31,770.00
20.03.04.00	Motor cycle	National Budget Department	177,651.63
<b>Social Security Contributions</b>			<b>47,254,589.86</b>
20.04.01.00	Social security contribution	Department of Pensions	47,254,589.86
<b>Capital Revenue</b>			<b>29,060.00</b>
20.06.02.00	Sale of capital assets	Department of Treasury Operations	29,060.00
<b>Total</b>			<b>188,484,680.87</b>

## Head 278 - Final Accounts - 2018



Statement of Revenue for the period ended 31<sup>st</sup> December 2018

Revenue Accounting Officer :

Expenditure Head No :

Rs.

Revenue Code	Revenue Title	Revenue Estimate (1)		Revenue Collection (2)			Collection of Arrears Revenue (3)	Revenue Refund (4)			Net Revenue
		Original Estimate	Revised Estimate	Collected by Ministry/ Dept.	Collected by Other Ministry/ Dept. (Table 66)	Total		By Cash	Error Corrections	Total	
		1(i)	1(ii)	2(i)	2(ii)	2(iii)=2(i)+2(ii)		4(i)	4(ii)	4(iii)=4(i)+4(ii)	
<b>NOTE - 1</b>	<b>INCOME TAX</b>										
04.01.01	Income Tax										
04.01.02	Dividend Tax										
04.01.03	Remittance Tax										
<b>04.01.00</b>	<b>Total Corporate Tax (a)</b>										
<b>04.02.01</b>	<b>PAYE</b>										
<b>04.02.99</b>	<b>Other</b>										
<b>04.03.00</b>	<b>Withholding Tax</b>										
04.03.01	On Interest										
04.03.99	On Fees & Other										
<b>04.04.00</b>	<b>Economic Service Charge</b>										
04.04.01	Domestic										
04.04.02	Imports										
<b>04.02.00</b>	<b>Total Non -Corporate Tax (b)</b>										
	<b>Total Income Tax (a+b)</b>										

\*Since this institution is not an income generating entity, The report is blank. The annual revenue statement is shown on page No.40

### Summary of Expenditure by Programme for the period ended 31st December 2018

Expenditure Head No : 278

Ministry / Department / District Secretariat : Ratnapura

Rs.

Programme Number given in Annual Estimates	Title of the Expenditure	Annual Budget Provision	Supplementary Estimate Provision	FR 66/69 Transfers	Total Net Provision	Total Expenditure	Net Effect Savings / (Excesses)
		(1)	(2)	(3)	(4)=(1)+(2)+(3)	(5)	(6)=(4)-(5)
Programme (1)	(1) Recurrent	806,000,000	-	-	806,000,000	796,379,072	9,620,928
				(8,700,000)			
				8,700,000			
	(2) Capital	305,000,000	2,353,920,000	-	2,658,920,000	1,769,152,906	889,767,094
	<b>Sub Total</b>	1,111,000,000	2,353,920,000	-	3,464,920,000	2,565,531,979	899,388,021
Programme (2)	(1) Recurrent	-					
	(2) Capital	-					
	<b>Sub Total</b>	-					
	<b>Grand Total</b>	1,111,000,000	2,353,920,000	-	3,464,920,000	2,565,531,979	899,388,021

## Statement of Expenditure by Programme

Expenditure Head No : 278

Ministry / Department / District Secretariat : Ratnapura

Rs.

Expenditure Code	Programme (1)					Programme (2)					Total Expenditure
	Provisions				Expenditure	Provisions				Expenditure	
	Annual Budget Provision	Supplementary Estimate Provision	FR 66/69 Transfers	Total Net Provision		Annual Budget Provision	Supplementary Estimate Provision	FR 66/69 Transfers	Total Net Provision		
(1)	(2)	(3)	(4)=(1)+(2)+(3)	(5)	(6)	(7)	(8)	(9)=(6)+(7)+(8)	(10)	(11)=(5)+(10)	
<b>Recurrent Expenditure</b>											
<b>Personal Emoluments</b>	<b>675,500,000</b>	-	<b>3,100,000</b>	<b>678,600,000</b>	<b>672,925,568</b>	-	-	-	-	-	<b>672,925,568</b>
1001 - Salaries & Wages	454,000,000		5,800,000	459,800,000	456,788,610						456,788,610
1002 - Overtime & Holiday Payments	17,000,000		-	17,000,000	16,877,298						16,877,298
1003 - Other Allowances	204,500,000		(2,700,000)	201,800,000	199,259,659						199,259,659
<b>Travelling Expenditure</b>	<b>16,900,000</b>	-	<b>(300,000)</b>	<b>16,600,000</b>	<b>16,135,565</b>	-	-	-	-	-	<b>16,135,565</b>
1101 - Domestic	16,900,000		(300,000)	16,600,000	16,135,565						16,135,565
<b>Supplies</b>	<b>26,025,000</b>	-	<b>650,000</b>	<b>26,675,000</b>	<b>25,695,671</b>	-	-	-	-	-	<b>25,695,671</b>
1201 - Stationery & Office Requisites	12,600,000		1,500,000	14,100,000	14,071,019						14,071,019
1202 - Fuel	11,600,000		(900,000)	10,700,000	9,994,891						9,994,891
1203 - Diets & Uniforms	600,000			600,000	544,242						544,242
1205 - Other	1,225,000		50,000	1,275,000	1,085,519						1,085,519
<b>Maintenance Expenditure</b>	<b>21,500,000</b>	-	<b>(1,890,000)</b>	<b>19,610,000</b>	<b>18,954,456</b>	-	-	-	-	-	<b>18,954,456</b>
1301 - Vehicles	15,000,000		(1,890,000)	13,110,000	12,626,731						12,626,731
1302 - Plant and Machinery	3,700,000			3,700,000	3,619,020						3,619,020
1303 - Building and Structures	2,800,000			2,800,000	2,708,706						2,708,706
<b>Services</b>	<b>56,325,000</b>	-	-	<b>56,325,000</b>	<b>54,638,267</b>	-	-	-	-	-	<b>54,638,267</b>
1402 - Postal & Communication	8,800,000		600,000	9,400,000	9,215,967						9,215,967
1403 - Electricity & Water	10,100,000		(300,000)	9,800,000	9,295,820						9,295,820
1404 - Rents & Local Taxes	625,000			625,000	357,953						357,953
1409 - Other	36,800,000		(300,000)	36,500,000	35,768,527						35,768,527
<b>Transfers</b>	<b>9,750,000</b>	-	<b>(1,560,000)</b>	<b>8,190,000</b>	<b>8,029,545</b>	-	-	-	-	-	<b>8,029,545</b>
1506 - Property Loan Interest to Public Servants	9,750,000		(1,560,000)	8,190,000	8,029,545						8,029,545
<b>Grand Total</b>	<b>806,000,000</b>	-	-	<b>806,000,000</b>	<b>796,379,072</b>	-	-	-	-	-	<b>796,379,072</b>

Expenditure Code	Programme (1)					Programme (2)					Total Expenditure
	Provisions				Expenditure	Provisions				Expenditure	
	Annual Budget Provision	Supplementary Estimate Provision	FR 66/69 Transfers	Total Net Provision		Annual Budget Provision	Supplementary Estimate Provision	FR 66/69 Transfers	Total Net Provision		
(1)	(2)	(3)	(4)=(1)+(2)+(3)	(5)	(6)	(7)	(8)	(9)=(6)+(7)+(8)	(10)	(11)=(5)+(10)	
<i>Capital Expenditure</i>											
<b><u>Rehabilitation &amp; Improvements of Capital Assets</u></b>	<b>56,000,000</b>	-	-	<b>56,000,000</b>	<b>52,438,699</b>	-	-	-	-	-	<b>52,438,699</b>
2001 - Building & Structures	50,000,000			50,000,000	49,814,135						49,814,135
2002 - Plant, Machinery & Equipment	2,000,000			2,000,000	1,190,028						1,190,028
2003 - Vehicles	4,000,000			4,000,000	1,434,537						1,434,537
<b><u>Acquisition of Capital Assets</u></b>	<b>246,500,000</b>	-	-	<b>246,500,000</b>	<b>137,459,431</b>	-	-	-	-	-	<b>137,459,431</b>
2102 - Furniture & Office Equipment	20,000,000			20,000,000	19,978,932						19,978,932
2103 - Plant, Machinery & Equipment	2,500,000			2,500,000	2,492,900						2,492,900
2104 - Buildings & Structures	224,000,000			224,000,000	114,987,598						114,987,598
<b><u>Capacity Building</u></b>	<b>2,500,000</b>	-	-	<b>2,500,000</b>	<b>2,471,255</b>	-	-	-	-	-	<b>2,471,255</b>
2401 - Staff Training	2,500,000			2,500,000	2,471,255						2,471,255
<b><u>Other Capital Expenditure</u></b>	-	<b>2,353,920,000</b>	-	<b>2,353,920,000</b>	<b>1,576,783,522</b>	-	-	-	-	-	<b>1,576,783,522</b>
2501 Restructuring	-			-							
2507 - Research and Development	-			-							
2509 - Other	-	2,353,920,000		2,353,920,000	1,576,783,522						1,576,783,522
<b>Grand Total</b>	<b>305,000,000</b>	<b>2,353,920,000</b>	-	<b>2,658,920,000</b>	<b>1,769,152,906</b>	-	-	-	-	-	<b>1,769,152,906</b>
<b>Total Recurrent &amp; Capital Expenditure</b>	<b>1,111,000,000</b>	<b>2,353,920,000</b>	-	<b>3,464,920,000</b>	<b>2,565,531,979</b>	-	-	-	-	-	<b>2,565,531,979</b>

### Summary of Financing the Expenditure by Programme

Ministry / Department / District Secretariat : Ratnapura

Expenditure Head No : 278

Code	Financing  Description of Items	Programme 01 *		Programme 02 *		Grand Total		
		Net Provision **	Actual Expenditure	Net Provision **	Actual Expenditure	Net Provision **	Actual Expenditure	Percentage of Expenditure ***
		1	2	3	4	5	6	(6÷5)X100
		Rs.	Rs.	Rs.	Rs.	Rs.	Rs.	%
11	Domestic Funds	3,464,920,000	2,565,531,979			3,464,920,000	2,565,531,979	74
12	Foreign Loans							
13	Foreign Grants							
14	Reimbursable Foreign Loans							
15	Reimbursable Foreign Grants							
16	Counterpart Funds							
17	Foreign Finance Related Domestic Cost							
18	Foreign Financing Related Domestic-Co-Financing							
21	Special law services							
	<b>Total</b>	3,464,920,000	2,565,531,979	0	0	3,464,920,000	2,565,531,979	74

**Financing of Expenditure by Projects of each Programme**  
**(Financing of Capital and Recurrent expenditure according to Projects of a Programme)**

Ministry / Department / District Secretariat : Ratnapura

Expenditure Head No : 278

Programme No. &amp; Title : 01 - Operational Activities

Code	Description of Items	Project 1		Project 2		Project 3		Programme Total/Page Total *	
		Net Provision	Actual Expenditure	Net Provision	Actual Expenditure	Net Provision	Actual Expenditure	Net Provision	Actual Expenditure
		Rs.	Rs.	Rs.	Rs.	Rs.	Rs.	Rs.	Rs.
11	Domestic Funds	2,738,970,000	1,844,876,535	725,950,000	720,655,444			3,464,920,000	2,565,531,979
12	Foreign Loans								
13	Foreign Grants								
14	Reimbursable Foreign Loans								
15	Reimbursable Foreign Grants								
16	Counterpart Funds								
17	Foreign Finance related Domestic Cost								
18	Foreign Financing Related Domestic-Co-Financing								
21	Special law services								
	<b>Total</b>	2,738,970,000	1,844,876,535	725,950,000	720,655,444	0	0	3,464,920,000	2,565,531,979

**Imprest Account as at 31<sup>st</sup> December 2018**

Ministry / Department / District Secretariat : Ratnapura

Expenditure Head No. : 278

Rs.

Imprest Account No.	Imprest Balance as at 1 <sup>st</sup> January 2018			Imprest Received			Imprest Settlement			Imprest Balance as at 31 <sup>st</sup> December 2018			Imprest Balance as at 31 <sup>st</sup> December 2018 as per Treasury Books
	1			2			3			4			
	Unsettled Sub Imprests	Unsettled Imprests (Excluding Unsettled Sub Imprests)	Total	Treasury	Other Sources	Total	Expenditure	Cash	Total	Unsettled Sub Imprest Balance	Unsettled Imprests	Total	5
1(i)	1(ii)	1(iii)	2(i)	2(ii)	2(iii)	3(i)	3(ii)	3(iii)	4(i)	4(ii)	4(iii)		
317/18				6,210,136,595	459,389,841	6,669,526,436	6,669,516,750	-	6,669,516,750			-	9,686

**1. Please show reasons for difference between 4 and 5 above .**

(1) Remitted to the Treasury but not updated cash book balance as at 31/12/2018												0
(2) Other reasons - Balance has been corrected in Monthly Account Summary of January												9,686.00

State if these balances were settled as at the date of signing the report and if not, reason for not settling the balances.

I hereby certify that the above information is true and correct.

Statement of Deposit Accounts as at 31<sup>st</sup> December 2018

Expenditure Head No : 278

Ministry / Department / District Secretariat : Ratnapura

Rs.

Name of Deposit Accounts	Deposit Number	Balance as at 1 <sup>st</sup> January 2018	Credited during the year	Debited during the year	Balance as at 31 <sup>st</sup> December 2018	Balance as per Treasury Book as at 31 <sup>st</sup> December 2018
Security Deposits	6000-0-0-1-0-42	1,922,961.68	4,264,001.75	3,459,089.17	2,727,874.26	2,727,874.26
Tender Deposits	6000-0-0-2-0-56	1,582,501.00	932,528.23	2,179,222.97	335,806.26	335,806.26
Deposits Temporary Retained Payable to Third Parties	6000-0-0-13-0-43	5,404,598.05	38,005,937.22	41,547,679.03	1,862,856.24	1,862,856.24
Retention Money for Construction	6000-0-0-16-0-11	154,318,082.95	196,602,680.70	160,723,142.12	190,197,621.53	190,197,621.53
Compensation	6000-0-0-17-0-02	87,643,240.81	70,006,093.51	71,619,931.46	86,029,402.86	86,029,402.86
Temporary Retention for Statutory Payments	6000-0-0-18-0-13	46,162,713.88	173,601,647.04	173,507,809.15	46,256,551.77	46,256,551.77
District Secretariat Deposit Account	6003-0-0-54-0-0	(108,029.77)	-	-	(108,029.77)	(108,029.77)

Advance Accounts as at 31<sup>st</sup> December 2018

Expenditure Head No : 278

Ministry / Department / District Secretariat : Ratnapura

Rs.

Name of Advance Account	Advance Account Number	No. of Advance Accounts	Balance as at 1 <sup>st</sup> January 2018	Maximum Limits of Expenditure Rs. 66,000,000		Minimum Limits of Receipts Rs.46,000,000		Maximum Limits of Debit Balance Rs.280,000,000	Maximum Limits of Liabilities Rs.....	Balance as per Treasury Books as at 31 <sup>st</sup> December 2018
			(1)	Debits during the year		Credits during the year		Balance as 4=(1)+(2)-(3)		
				In Cash	Through Cross Entries	In Cash	Through Cross Entries			
(1) Advance to Public Officers	278011	1	212,138,015.22	64,908,129.41	18,060,641.86	64,735,128.92	16,163,516.62	214,208,140.95	-	214,208,140.95
(2) Other Advances										
(3) Miscellaneous Advances										

Note-(i)

**Statement of Losses and Waivers  
(Losses under F.R. 106 and F.R. 113)**

Expenditure Head No : 278 Ministry / Department / District Secretariat : Ratnapura

Programme No. & Title : 01 - Operational Activities

(i) **Statement of Losses Recovered/Written off/Waived off during the year.**

		Value	No.of Cases	Total Amount (Rs.)
Below	Rs.	25,000.00		
Over	Rs.	25,000.01		
		Total		

<b>Classification of the cases by nature of Losses.</b>		No.of Cases	(Rs.)
1			
2			
3			
4			
		Total	

(ii) **Statement of Losses being held to be Written off/Waived off or recoverable so far**

		Value	No.of Cases	Total Amount (Rs.)
Below	Rs.	25,000.00		
Over	Rs.	25,000.01		

<b>Classification of the cases by Nature of Losses</b>		No.of Cases	(Rs.)
1			
2			
3			
4			
		Total	

**Age Analysis per (ii)**

Less than five years	No.of Cases	
	Amount	Rs.
5- 10 years	No.of Cases	
	Amount	Rs.
Over 10 years	No.of Cases	
	Amount	Rs.

Note- Details on losses under F.R.106 and waives under F.R. 113 which were accounted under object code no 1701 are to be accounted in coming years should be included.

END