



# வார்டிக கார்டயலாடா வார்டாப ஸா ரிசூமி வருடாந்த ஸெயலாற்றறிக்ை மற்றும் கணக்குகள் அறிக்கை Annual Performance Report & Accounts

2015



டிஸ்ட்ரிக்ட் ஸெகரெட்டரி கார்டாலய - புத்தலம்

மாவட்ட ஸெயலகம் - புத்தலம்

District Secretariat - Puttalam



Contents	Page No.
1.1. Message from Government Agent / District Secretary- Puttalam .....	03
1. 2. Introduction of District Secretariat .....	04
1.3 Vision and Mission Statements .....	04
2. Activities of District Secretariat .....	05
3. Introduction of the District .....	06
3.1 Borders of the District: .....	07
3.2 Historical Importance of Puttalam District .....	07
3.3 Natural Resources of the District .....	08
3.4 Livelihood Patterns of the people of the District or main commercial and economic activities .....	10
3.5 Population Information of the District .....	11
3.6 Basic Statistical Information of the District .....	12
4. Organizational Structure & Approved Cadre .....	13
4.1 Organizational Structure.....	13
4.2 Cadre Details .....	14
5. Performance .....	16
5.1 Progress of General Administration Activities .....	16
5.1.1 Grama Niladarai Activities .....	16
5.1.2 Internal Audit Activities .....	17
5.1.3 Revenue Collection Activities .....	18
5.1.4 Election Activities .....	19
5.1.5 Registrar General Department Activities .....	20
5.1.6 Disaster Management Activities .....	21
5.1.7 Pension Activities .....	24
5.1.8 Statistics Branch Activities .....	25
5.1.9 Ministry of National Languages & Social Integration Activities .....	29
5.1.10 Administration Branch Activities .....	30
5.2 Progress of Social Services .....	32
5.2.1 Cultural and Religious Activities .....	32

5.2.2 Child Protection Activities .....	33
5.2.3 Social Service Activities .....	34
5.2.4 District Sports Activities .....	35
5.3 Progress of Development Activities .....	36
5.3.1 District Planning Activities .....	36
5.3.2 Small Enterprise Activities .....	43
5.3.3 Samurdhi Activities .....	45
5.3.4 Details of the payments made under the line Ministries and other Departments.....	50
5.4 Annual Accounts .....	54

### **1.3 Message from Government Agent / District Secretary- Puttalam**



The district of Puttalam which is the place of origin of Sinhala race claims for history of prolong. I am proud to say that the district population which comprises community of Buddhists, Muslims, Hindus and Catholics in itself has been living together in coexistence and harmony.

The District which has a lengthy stretch of coastal line enriches the district's fisheries Sector and provides a unique contribution for the Country's economy. As well the Agricultural Sector that is mainly based on major irrigation systems; the Ingenimitiya and the Thabbowa reservoirs is another main means of livelihood of the district people. In addition, a large number of farming family whose livelihoods are derived significantly from Chena and Grain cultivation under small and medium scale based on monsoon rain also lives in the district.

The district which situated in the Coconut Triangle Zone is carrying out the cultivation of coconut crops in a massive scale. Likewise large parts of land in the district are engaged for cashew cultivation too.

Number of industries which representing the industrial sector are also established throughout the district. The Roof Tiles industry which supplies the tiles to the whole country, the Cement industry, and Salt industry, the industry of Livestock Development and recently developed Tourism industry are some of key industries of the district.

While the main Administrative activities of the District are undertaken by the District Secretariat, the Divisional Administration is carried out by 16 Divisional Secretariats. This book is compiled as a Performance report of the District which elaborates the programmes implemented in the district for the year 2015 under the Development and Social Services Activities and Allocation granted for them with the Summary reports including the Expenditures details

N.H.M.Chithrananda,  
District Secretary,  
For Puttalam District.

## Introduction of District Secretariat, Puttalam

The District of Puttalam is one of two districts belong to the North Western Province. The District Secretariat which is a key administrative structure of the district is situated at the heart of Puttalam city. In respect of power decentralization large part of administrations are carried out through the District Secretariat. The branches of various departments are also housed at the District Secretariat complex. Administrative activities of the district are carried out through 16 Divisional Secretariat Divisions.

### 2.1 Vision and Mission Statements

#### ***Vision***

*Our vision is to uplift the living standard of the District people through successfully harnessing the physical and human resources.*

#### **Mission**

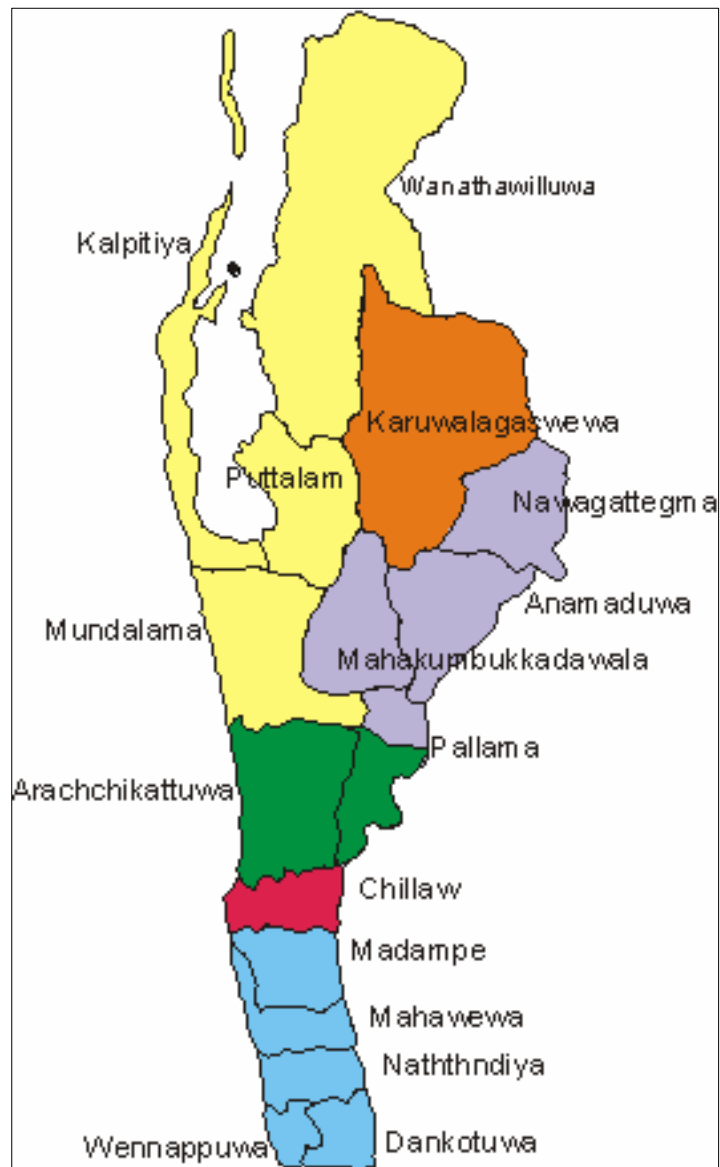
*Our mission is to fulfill the community's need through efficient, equitable, just and cordial services, successfully harnessing the resources and the institutions with proper guidance and coordination, conducive to sustainable development activities of the district.*

## 2.2 Activities of the District Secretariat.

- ❖ General Administration and supervision of the Divisional Secretariats.
- ❖ Coordinating the activities of agriculture and fisheries sector
- ❖ Buddhist and Cultural affairs.
- ❖ Performance Appraisal of Staff Grade Officers
- ❖ Coordination of Social Services activities
- ❖ Coordination of Ranaviru Welfare activities
- ❖ Election related activities...
- ❖ Appointment, of Registrar of Birth, Death and Marriage and sudden Death Inquirer.
- ❖ Human and physical resource management
- ❖ Environment conservation and development including land use planning
- ❖ Protection and maintenance of public assets such as quarters and state owned lands.
- ❖ Socio-economic development activities including construction.
- ❖ Disaster Management.
- ❖ Weight and Measurement activities.
- ❖ Gun Licensing and Issuing of Explosive Permits.

### 3. Introduction of the District

#### District Map





### **3.1. Border of the District**

The Puttalam which is the homeland of chronicle of Sri Lanka is a sacred land of prolonged histories. The district is a coastal land situated at 300 feet high from sea level. The administrative district Puttalam locates in the North Western province of Sri Lanka and surrounded on the North by Kala Oya, bordering Mannar district, East by Kurunegala and Anuradhapura districts, South by ‘Ma Oya’ bordering Gampaha district and West by Indian Ocean. The length and width of the district is 120 km and 50 km respectively.

The district has a land area of 3013 square Kilo meters including inland water bodies and a coastal belt of 288 Kilo meters in length.

### **3.2 Historical Importance of Puttalam District:**

The Puttalam which claims for prolonged history was known by Mangala Thotupola in ancient time. The history of Puttalam dates back to the arrival of Prince Vijaya, nearly 2500 years ago, when his vessel washed ashore to "Thambapani" which is located North side of Puttalam lagoon. So this was the place of origin of Sinhalese lineage. Further it was also the dwelling place of “Queni” who helped the Vijaya to become a Prince. Later, Queni shifted her dwelling to “Thonigala” in Anamadua division as the Prince Vijaya had married the princess "Bhaddrakachchana” from India. It is here the longest stone inscription of Sri Lanka also found out.

It was at Dharmapala where the 04 children of Queni had sheltered before they went to the relatives following the prince Vijaya chased away them out so that this was referred in the legends as Dharmapala.. The name "Puttalam" may be a modification of the Tamil word Uppuththalam. Of which Uppu means salt and Thalam means salt production zone, thus evolved into the name Puttalam

The Dutch Fortin Kalpity which is used by the Sri Lankan Naval forces even at present and the Palavi Air Port, used during the World War II have been identified as the places of direct linkage with Sri Lankan history. The Paru Ela constructed during the Dutch period to ferry the trading goods from Colombo to Puttalam and vice versa in those days are also situated within the district. The coral reef which is also one of the factors that Sri Lanka to become famous, situated in coastal line of the district.

The Pallama division once ruled by Nanthamithra , the chief disciple of Prince Dutegemunu is also one of the DS divisions in the district. It was at ancient Rajamaha Viharaa ,Paramakanda in Anamaduwa division the popular paintings of 05 interlocking Swans placed. The Munneswaram Temple, situates in Chilaw D.S. Division is the sacred place for both Hindus and Buddhists. There was a saying that it was the temple called by the name “Munisoama” during the rule of Dambadeniya Kingdom.

The Iyenak Devalaya situates in Deduru Oya area and Thanivel Devalaya in Madampe are the places of historically significant. The St. Ant. Thalawila church, the sacred place of Catholics is also situated in Kalpity D.S division in the district of Puttalam.

The world famous Artiste of wall paintings at the Keleniya Temple Hon. Solias Mendis, and Artistes Hon. Edmon Radaguru, Saiman Nawagaththegama, Vimalarathne Kumaragama who contributed for the growth of Sinhala literature greatly are the sons of this land.

It is sure that the transport facilities of the district are leading the way because of the Colombo – Anuradhapura road which goes parallel to the coastal belt of the district as it comes under the rapid development process.

### **3.3 Natural Resources of the District**

The coconut triangle belongs to the Puttalam district contributes immensely to the economy of Sri Lanka through the earnings gain from exporting of coconut and the related products. The agriculture which is the most dominant source of livelihood in the area has been carried out successfully due to the existing irrigation system since the ancient time. The paddy cultivation also becomes successful as a result of availability of water resources such as Ingimittiya tank constructed across Mee oya, Thabbowa tank and kottukachchi colonization. The district which has 150 km lengthy coastal line contributes in a large scale for country’s fish production.. As well the inland fishing also contributes a much to the country’s economy. The prawn farming under taken adjacent to the Puttalam lagoon brings a large sum of foreign exchanges to the nation The dry fish productions are another lucrative venture taken place in Kaplity and Vanathawillu area which are surrounded by no. of small islands. The salt industry is carried out successfully adjoining to the Puttalam lagoon which is an ideal place with low rainfall and high evaporation and makes the spot to become the second largest salt producer in the country.

The vegetable cultivation carried out by using ground water is flourishing in and around Kalpity division. . The cultivation of vegetables such as Beetroot, Carrot, Cabbage, Kilo Pera, Water Melon, Garkin, Pumpkin, Tomatoes, Papaws and Dragon fruit contribute to the agriculture sector

largely. It can prevalently be seen the cashew cultivation in Aarachchikkattuwa, Vanathawilluwa divisions and papaw, Orange cultivation in Puttalam, Kalladi, Ralmaduwa and Vanathawilluwa .

The cement factory in Puttalam was commissioned due to the abundant deposit of lime stone at Aruwakkadu in Vanathavilluwa division. Further availability of the raw material for roof tiles and related industry in Wenappuwa and Dankotuwa areas lead the district to contribute hugely for construction industry too for the country.

Since the influx of large no. of visitors from home and abroad to the Wilpaththu National park, the Aanawilunthawa bird sanctuary and the beautiful beach valley of in and around Kalpity peninsula ; tourist hotels such as Dolphin Club, Ranveli, Pambay hotels have been constructed to facilitate and promote the tourism in the area so that the thriving of the industry brings large sum of foreign exchanges to the nation.

### 3.4 Livelihood Patterns of the people of the District or main commercial and economical activities

The livelihood of people of Puttalam District is mainly depends on Agriculture and Fishing. Some of them are adhere self employment and Home Industries and get income for their life.

#### Paddy Cultivation under 2015 Maha Season

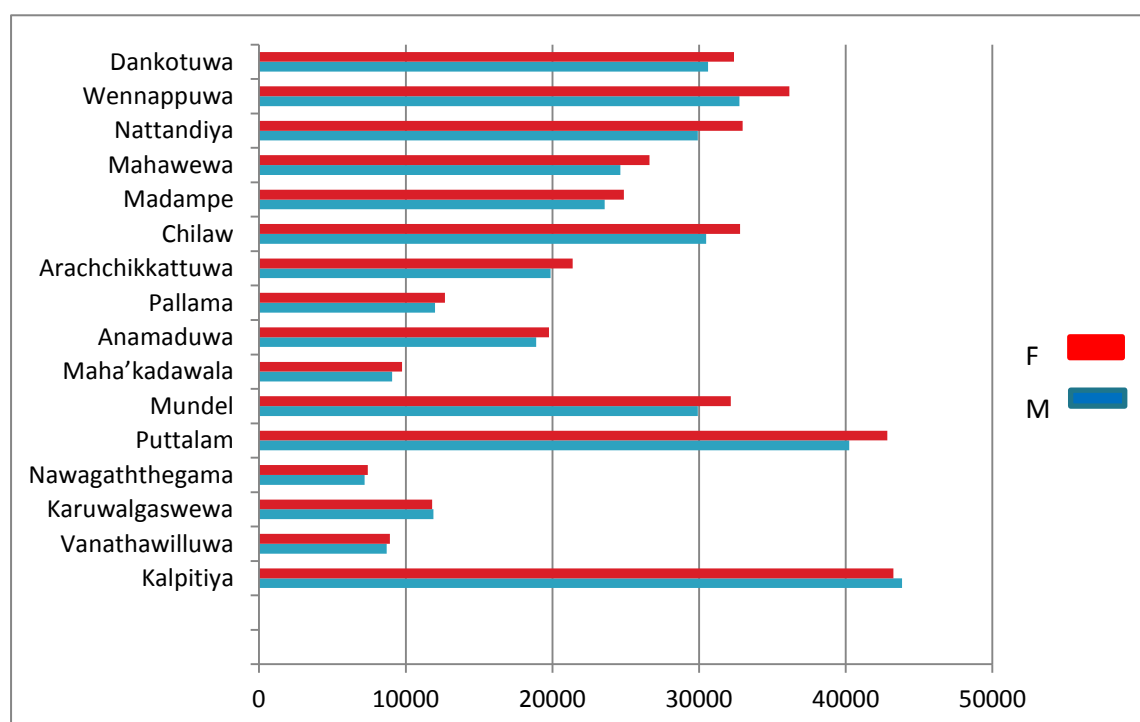
Irrigation System	Targeted Cul.Area-Hact.	Targeted Production Metric ton.	Cultivated Area(Hact)	Percentage	Cultivated Area(Hact)up to Jan2015
Major	7831.1	38371.9	7023.6	89.7	7553.67
Irrigation	12227.1	47930.23	10054.81	82.2	10458.75
Minor	2543.1	8620.77	1895.8	74.5	2283.5
Irrigation					
Rain Water					
Total	22601.3	94922.9	18974.21		20295.32

#### Other Field Crops – Maha Season 2015/16

Crops	Targeted Area of Cultivation (Hact)	Targeted Production M.T	Cultivated Area (Hact.)	Percentage	Cultivated Area(Hact) up to Jan. 2015
Dried Chilies	100	250	26.7	2.67	38.9
Green Chilies	763	11445	517.86	67.87	582.58
Onion	406	4872	486.2	119.75	540.9
Kawpi	482	482	231.9	48.11	230.15
Green gram	248	2487	252.1	101.65	288.3
Black gram	174	208.8	139.1	79.94	142.7
Cashew Nut	682	1023	535.6	78.53	589.3
Maize	938	3752	414.9	44.23	572.3
Kurakkan	90	67.5	73	81.11	86.91
Gingili	151	113.25	188.9	125.1	174.8
Leafy Vegetable	60	797.6	81.73	136.22	73.21

### 3.5 Population Information of the District

District & Divisional Secretariat Division	No. of Families	Sex		Total No. of Members
		Male	Female	
Kalpitiya	19,928	44,260	44,175	88,435
Vanathawilluwa	4,593	8,834	9,037	17,871
Karuwalgaswewa	6,826	12,047	11,944	23,991
Nawagaththegama	4,207	7,299	7,525	14,824
Puttalam	19,466	40,720	43,661	84,381
Mundel	15,455	30,219	32,868	63,087
Maha'kadawala	5,467	9,186	9,885	19,071
Anamaduwa	10,828	19,121	20,065	39,186
Pallama	6,888	12,136	12,880	25,016
Arachchikkattuwa	11,384	20,187	21,776	41,963
Chilaw	16,483	30,621	33,363	63,984
Madampe	13,102	23,808	25,239	49,047
Mahawewa	13,733	24,046	27,232	52,278
Nattandiya	16,797	30,245	33,361	63,606
Wennappuwa	18,670	32,966	36,746	69,712
Dankotuwa	16,957	30,950	32,916	63,866
<b>Total</b>	<b>200,784</b>	<b>377,645</b>	<b>402,673</b>	<b>780,318</b>

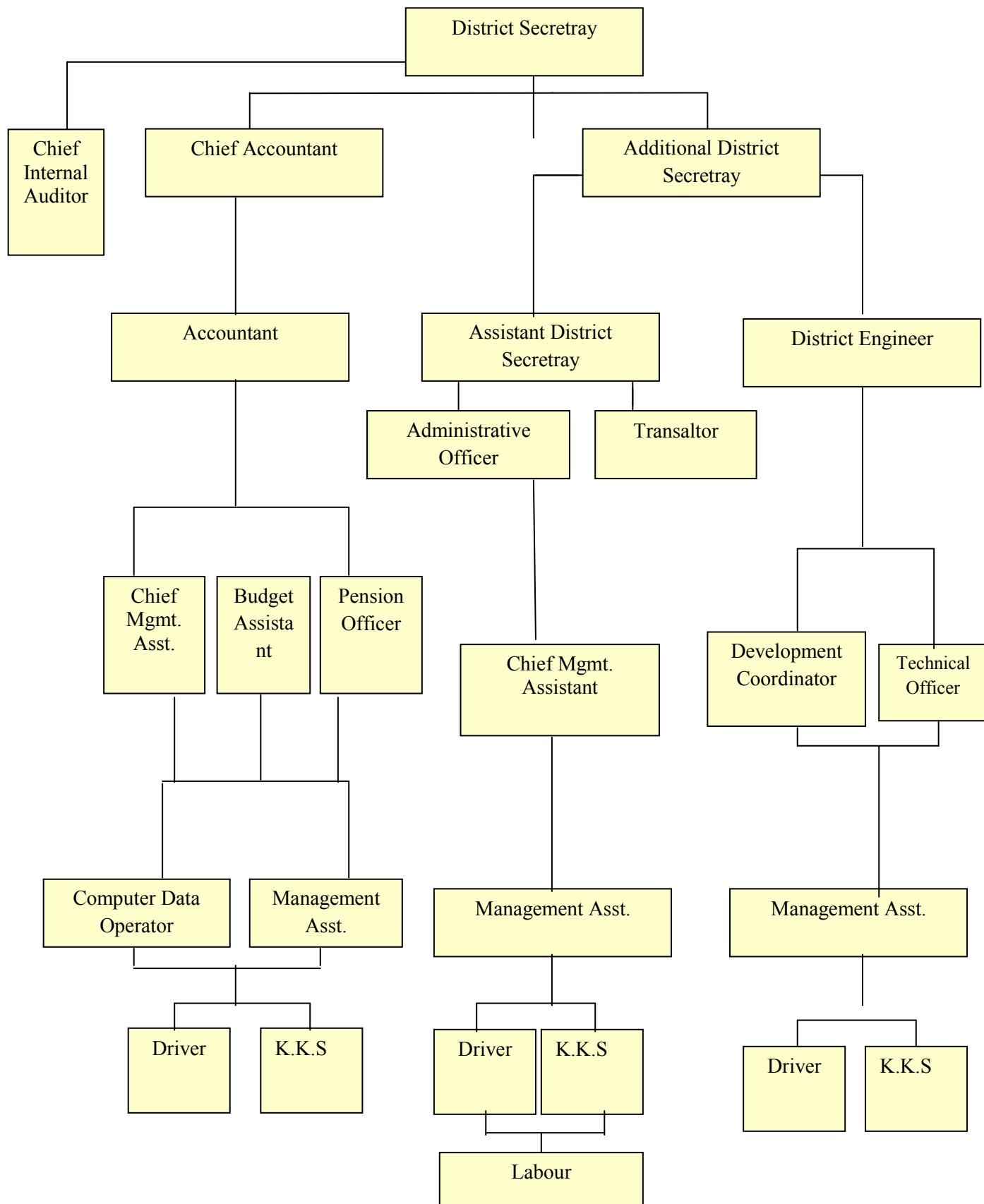


### 3.6 Basic Statistical Information of the District.

Name of the District	Puttalam
Province	North Western
Total Land Area	3072 Sq.Km
No. of DS Division	16
No. of GS Division	548
No. of Voters	570309
No.of Villages	1273
No. of Polling Division	387
No.of Urban Councils	2
No.of Pradesiya Sabhas	10
No.of Electorates	
Circuits and Holiday Bungalows under the Ministry and the District Secretariat.	2
No.of Zonal Education Offices	2
No.of Schools and No.of Teachers	Schools -354 Teachers -7630
No.of Parliament Members	8
No.of Prov. Council Members	17
Population	780365

## 4. Organization Structure and Approved Cadre of the Secretariat

### 4.1 Organization Chart



## 4.2 Approved Cadre of the Secretariat

Approved Cadre and Vacancies – Puttalam District Secretariat				
<i>Category</i>	Class/Grade	Approved Cadre	Existing Cadre	Vacancy
<i>Senior level</i>				
<b>District Secretary</b>	SLAS –Spec.	1	1	0
<b>Addl. District Secretary</b>	SLAS- I	2	1	1
<b>Assistant District Secretary</b>	SLAS.III	1	1	0
<b>Chief Accountant</b>	SLAS I	1	1	0
<b>Chief Internal Auditor</b>	SLAS I	1	1	0
<b>Accountant</b>	SLAS III	1	0	1
<b>Engineer</b>	SLAS III	1	1	0
Total of Senior Level		8	7	1
<i>Tertiary level</i>				
<b>Translator</b>		1	1	0
<b>Administrative Officer</b>	PMAS -Supra	1	1	0
Total of Tertiary Level		2	2	0
<i>Secondary level</i>				
<b>Budget Asst.</b>	Associating Officer	1	1	0
<b>Development Coordinator</b>	Associating Officer	2	2	0
<b>Development Officer</b>	Associating Officer	15	15	0
<b>Pub.Mgmt. Asst.</b>	PMAS I,II,III	26	18	8
<b>Data Entry Operator</b>		1	0	1
<b>Technical Officer</b>	SLTS	2	2	0
<b>Draughts Men</b>	SLTS	1	1	0
<b>Receptionist</b>		1	1	0
Total of Secondary level		49	40	9
<i>Primary level</i>				
<b>Driver</b>	Driv. Service	8	9	1
<b>Office Asst.</b>	OES I,II,III	11	15	5
<b>Bungalow Keeper</b>		1	1	0
Total of Primary Level		19	25	6



## Details of Cadres –Divisional Secretariats-Puttalam District

Approved Cadre and Vacancy's Details – Puttalam Divisional Secretariats.				
Post	Service Grade/Class	Approved Cadre	Existing Cadres /Present Strength	No. of Vacancies
<b>Senior level</b>				
<b>Divisional Secretary</b>	SLAS I.	16	16	0
<b>Asst.Divisional Secretary</b>	SLAS III	16	14	2
<b>Accountant</b>	SLAS I/II/III	16	9	7
Total of Senior Level		48	39	9
<b>Tertiary Level</b>				
<b>Administrative Officer</b>	PMAS-Supra	16	9	7
<b>Admn.Grama Niladharies</b>	Gr.Service-Supra	16	7	9
Total of Tertiary Level		32	16	16
<b>Secondary Level</b>				
<b>Development Coordinators</b>	Association Officer	16	9	7
<b>Grama Niladharies</b>	G.N.Ser	548	366	182
<b>Pub.Mgmt.Asst.</b>	PMAS I,II,III	369	316	53
<b>Data Entry Operators</b>		16	2	14
<b>Technical Officers</b>	SLTS	16	11	5
Total of Secondary Level		965	704	261
<b>Primary level</b>				
<b>Driver</b>	Driver Service	123	122	1
<b>K.K.S.</b>	OES I,II,III	32	31	1
Total of Primary Level		155	153	2

## **5. Performance**

### **5.1 Progress of General Administrative Activities**

#### **5.1.1 Activities of Grama Niladharies.**

- ❖ Performing as a peace officer for the purpose of implementation of powers vested in by the Criminal Code.
- ❖ Performing as an officer for the purpose of implementing powers imposed by various ordinances and regulations and as an officer for reporting to the courts regarding instances where such provisions are violated.
- ❖ Collection of economic, social and cultural information within the division with necessary Updating and provision of this information to the government and other institutions, when required under the instructions of the Divisional Secretary.
- ❖ Coordination and implementation of the social, economic and cultural development programs of The government and within the division.
- ❖ Maintenance of social welfare activities within the Division.
- ❖ Maintenance of official diary of Grama Niladhari as a legal document.
- ❖ Maintenance of a proper Grama Niladhari office within the division by keeping a well organized filing system, inventory and other legal documents.
- ❖ Ensuring commitment for the service during every day(24 hours) of the week except his day off.(Grama Niladhari is entitled to a day-off per week)
- ❖ Satisfying the needs of general public whilst remaining at the office during the time prescribed by the Secretary and further the performing field duties during rest of the time within the division.
- ❖ Performing the duties entrusted properly in addition to the above by the Divisional Secretary, any other Ministry, Department, Statutory Institutions or Provincial Councils in relation to the division.

### 5.1.2 Internal Audit.

In order to maintain a proper Public Financial Management under F.R 123,133 and 134 following activities are carried out in the District Secretariat and offices under it and all 16 Divisional Secretariats of Puttalam District

- ✓ Financial Management,
- ✓ Development activities,
- ✓ Inspection activities carried out according to the public policy
- ✓ Implement an adequate Internal Audit system and reporting to the Chief Accounting officers if found faults and corruption and taking steps to reduce such incidents

Here , It is expected to protect state properties and utilize them in proper and efficient manner in order to avoid wastages and improve deficiency existed in current management system related to deploying the human resources in effective and efficient manners for the district development by adhering Establishment Code, Financial Regulation, Circulars and Directives issued by the Ministry of Pub. Admn. Dept. of Treasury and other line ministries from time to time.

Key activities carried out during the last year are given below:

Ser.No.	Activities Audited	No. of offices inspected for auditing	Duration of inspection.
1.	Vouchers and Accounts	24	Year 2015
2.	Accounts related to state revenue collection.	23	Year 2015
3.	Development Activities and Projects implementation	23	Year 2015
4.	Office Inspection	24	Year 2015
5.	Pension payments and regularize them through examination.	16	Year 2015
6.	Staff training.	-	Year 2015
7.	Special Investigation	7	Year 2015

### 5.1.3 Revenue Collection Activities.

Summary of Revenue Account for the year 2014

Revenue Code	Particulars of Revenue	Income earned 2015
20.02.01.01	Rent on Govt Buildings	1,491,624.18
20.02.02.99	Interest on loan payment to Pub. officers	5,862,490.18
20.03.02.99	Administrative cost - Miscellaneous	2,250,733.30
20.03.03.00	Disposal and Charges – Departmental sale	5,291,536.00
20.03.99.00	Disposals and charges –Other Receipts	14,629,656.50
10.03.07.03	Private Timber transport charges	380,994.08
20.03.02.13	Exam fees	140,140.00
20.03.02.14	Motor traffic income	47,087,240.00
10.03.07.99	Miscellaneous	14,401,431.30

## 5.1.4 Activities of Elections Office.

### 1. Revision of Voters Register – 2014

Under the Directive of Elections Commissioner in the year 2015, process in revision of Voters Register began in Grama Niladari divisions through Divisional Secretariats on 16<sup>th</sup> May 2015 with the support of Grama Niladharies and recognized party's representatives. Revised Register was certified by Mr. A.A.M. Kabeer, Assistant Commissioner of Elections on 31st Dec. 2015.

### 2. Voters Day -2015.06.01

Following programmes were conducted by the Asst. Elections Commissioner with the support of Elections staff under the instruction of the District Secretary and directives of the Elections Commissioner to give awareness to the public's in relation to importance of registering as voters and rights to franchising their voting rights on election day and celebrate Voters Day on June 1<sup>st</sup> in all district.

1. A programme to collect BC application form was conducted at No.617/B GS division within the Urban Council limit of Puttalam with the support of grama niladharies of the area on 07<sup>th</sup> June 2015.
2. An awareness programme for public was held by deploying the Elections Staff in Anamaduwa and Nawagaththegama DS Divisions on 2015.06.06. .
3. Displays the Banners prepared bilingually in all DS divisions on Voters Day

### Elections Activities

The duties for Presidential poll held on 08<sup>th</sup> Jan. 2015 and General Election held on 17<sup>th</sup> Aug. 2015 were discharged perfectly.

## Registrar's General Department Activities

### 5.1.5 Registry's Activities and Revenue collected.

No. of deeds submitted for registration	14323
Deed fees	Rs.69,044.00
Deeds issued	14293
Deed registration fees	Rs.1,505,100.00
Caveat registration fees	Rs.317,500.00
Applications for search of extracts	180
Fees charged for search of registry	Rs.61,000.00
No. of Deed and extract	16619
Revenue earned from issue of extract & deed copies	Rs.3,982,200.00
Fees for registration of Attorney- at-Law	Rs.57,000.00
marriage certificate fees	Nil
Fine and penalties	Rs.16,640.00

## 5.1.6 Disaster Management Activities

### 1st Quarter – 100 Day Program

S/No	Programme	No. of Prog.	date of conduct	DS Div.	GS Div.	No. of participants	Approved amt.	Expenditure	Balance amt.
01	Rehearsal I Programme on Flood Disaster	02	2015-03-17	Karuwalagaswewa	No. 640 D Thampapanniya	71	19960.00	19960.00	-
			2015-03-26	Pallama	664 A/Thammanna	93	19960.00	19960.00	-

### 1st Quarter

01	Tsunami Rehearsal Programme at National Level	01	2015-03-10	Mahawewa	530 B,- Barudalpola	135	12000.00	9580.00	2420.00
02	Tsunami Rehearsal Programme	03	2015-07-06	Mundel	599 B-Kandathoduwwa	131	10000.00	7210.00	2790.00
			2015.06.29	Chilaw	562-Ambakandawila	117	10000.00	7102.50	2897.50
			2015.06.18	Wennappuwa	492 D- Kadawatta	154	10000.00	8795.00	2205.00
03	Formulation of Rural Plan programme	02	2015.04.28	Vanathawilluwa	635 Parana Eluwankulam	65	6000.00	4600.00	1400.00
			2015..04.30	Chilaw	569 D/Manuwangomuwa East	70	6000.00	5505.00	495.00

### 2nd Quarter

01	Awareness progr' for school Teachers	01	2015.11.27	Chilaw	Chilaw Ananda National School	69	30,000.00	12125.00	17875.00
02	Awareness progr' for School Children.	02	2015.07.17	Anamaduwa	P/Ana/Isuru Navodaya M.M.V.	224	20000.00	17330.00	2670.00
			2015.07.29	Arachchikattuwa	Bangadeniya M.V	226	20000.00	18650.00	1350.00
03	Awareness progr' for Rural Committee.	04	2105.07.16	Karuwalagaswewa	638 A Saliyawewa	82	10000.00	10000.00	-
			2015.07.03	Nawagattegama	647/3 Kuruluwewa	50	10000.00	10000.00	-
			2015.07.09	Mahakumbukkadawala	611 D/Mahasembukkuliyia	50	10000.00	10000.00	-
			2015.07.21	Dankotuwa	459 A-Jankuraweliya	50	10000.00	10000.00	-
04	Awareness Prog' for Fishing Community	02	2015.07.15	Kalpitiya	429 B Kurinchampittiya	66	8000.00	5792.89	2207.11
			2015.07.30	Arachchikattuwa	Muthupanthiya	75	8000.00	7525.00	475.00

Awareness Programmes.									
01	Awareness prog' for Rural Community	04	2015.09.08	Chilaw	Chilaw	56	6000.00	3800.00	2200.00
			2015.08.31	Mahawewa	459 Thoduwwa-South	86	6000.00	5606.00	394.00
			2015..08.07	Pallama	591 B-Devalahandiya	83	6000.00	4960.00	1040.00
			2015.10.19	Karuwalagas wewa	540 B-Thewanuwara	77	6000.00	5669.59	330.41
02	Tsunami Preparedness Programme	03	2015..09.21	Kalpitiya	529 B-Kurinchipititya	146	10000.00	8735.00	1285.00
			2015.09.23	Wennappuwa	West/Dummaldeniya	106	10000.00	7625.00	2375.00
			2015.09.28	Nattandiya	594 A-Langsigama	144	10000.00	8070.00	1930.00
03	School Protection Programme	01	2015.10.01	Anamaduwa	Thalgasgama Vimalarathna Kumaragama Vidyalaya	101	10000.00	9690.00	310.00

### 3<sup>rd</sup> & 4<sup>th</sup> Quarter - Preparedness and Emergency Response plan

01	Awareness Prog' for Tri-Forces and Police	01	2015.09.14	Puttalam	Army Camp	97	20000.00	20000.00	-
02	Awareness Prog' on Natural Disaster prog'	01	2015.11.03	Puttalam	District Secretraiat, Puttalam	117	32000.00	16930..00	15070.00
03	Programme on First Aid & Camp Management.	01	2015.09.22	Nawagattegama	Vijaya M.V	101	20000.00	20000.00	-
04	Awareness Prog' for District Disaster Mgmt. Committee	01	2015.10.23	Puttalam	District Secretraiat, Puttalam	48	15000.00	15,083.00	
05	Awareness Prog' for Rural. Committee	01	2015.11.23	Pallama	59B/Wilpotha East	74	10000.00	8000.00	2000.00
06	Awareness Prog' for Fishing Community.	01	2015.09.12	Mahawawa	532A, Iranawila East	92	8000.00	8000.00	-
07	Training on	01	2015.09.18	Mahawawa	Olanka Sunseat Beach Hotel	40	30000.00	30000.00	
4 <sup>th</sup> Quarter									
01	Printing of Divisional Plan	06	2015.12.18	Naththandiya, Mahawawa, Madampe, Arachchikattuwa, Nawagaththegama, Mahakubukkadawala		120	9000.00x6	54000.00	
02	Final Workshop	02		Not conducted			17000.00x2	-	34000.00
03	Awareness Prog' for Rural. Community	03	2015.12.15	Not conducted in Puttalam & Wennappuwa	618a, Thiladiya	49	6000.00	3420.00	2599.80
			2015.12.16		467 Mirissankotuwa South	86	6000.00	4250.00	1750.00
					-	-	6000.00	-	6000.00
04	National Tsunami Rehearsal prog'	02	-	Not conducted	-	-	12000.00x2	-	24000.00



05	Tsunami Rehearsal prog'	03	2015.12.07	Not conducted in Chilaw	562, Ambakadawila	149	10000.00, 10000.00x 2	7560.00	2440.00 20000.00
06	Awareness programme for disaster condition caused by torrential rain	03	2015.11.03	Chilaw	Divisional Secrateriat	76	20000.00	10.130.00	9870.00
			2015.11.03	Pallama	Divisional Secrateriat	81	20000.00	8475.00	11525.00
			215.11.04	Mundel	Dicisional Secrateraiat	101	20000.00	16160.00	3840.00
	Total								178,723.82

### 5.1.7 Pension Scheme

S. No	Division	Pension payment		No. of W&O. p and LGS payment		Total No. of pensioners	Total Expenditure
		No. of Pensioners	Total Expenditure	Pensioners no.	Total Expenditure		
1	Maha'kadawela	224	49,501,792.48	66	14,297,368.64	290	63,799,161.12
2	Anamaduwa	799	193,371,473.00	221	44,761,026.70	1020	238,132,499.70
3	Puttalam	706	205,786,878.24	346	77,810,673.12	1052	283,597,551.36
4	Chilaw	1021	254,723,757.12	353	115,393,520.70	1374	370,117,277.82
5	Madampe	668	276,567,194.97	353	81,625,497.71	1021	358,192,692.68
6	Wennappuwa	935	255,130,660.47	440	106,788,370.02	1375	361,919,130.47
7	Nattandiya	1046	293,829,034.51	498	115,781,085.49	1544	409,610,120.00
8	Pallama	208	44,572,450.02	80	16,433,237.41	288	61,025,687.44
9	Dankotuwa	894	15,805,362.60	315	8,144,793.37	1029	23,950,155.97
10	Vanathawilluwa	98	23,311,316.28	55	9,767,857.88	153	33,079,174.16
11	Arachchikkattuwa	717	98,856,182.06	195	476,047,218.00	812	574,903,400.06
12	Kalpitiya	195	53,384,266.19	127	27,340,894.97	322	80,725,161.16
13	Mundel	276	69,717,882.02	140	32,707,714.96	416	102,425,596.98
14	Nawagaththegama	181	35,1401,039.76	51	12,414,352.83	233	48,015,392.59
15	Katuwalagsawewa	181	32,954,441.48	74	16,304,222.11	255	49,258,663.59
16	Mahawewa	667	3,493,386.52	333	913,804.99	1000	4,407,191.51
	Total	8716	1,906,407,217.72	3648	1,156,731,638.89	12364	3,063,138,856.61

## 5.1.8 Activities of Statistical Branch

This division is a branch of the Dept. of Census and Statistics which is an agency of Central Government responsible for collection, process, analysis and dissemination of statistical data and computation of statistical indicators related to country's social, economical condition. Following activities were carried out by this branch during the year 2015.

### 01.Economic Census 2014/ 2015

Economic Census, which plays an important role in country's Development indicators is planned to carry out under following four stages on the basis of year 2013/14:

1. Listing of all estates under agricultural sector
2. Listing Economic activities such as Industries, trade and Service sectors.
3. Collection of information on agriculture from the listed estates
4. Collection of information from the Economic Activities listed in stage 2.

**First and second stage** of the Census have been completed in 2013 and Third and fourth stages have been completed in the year 2014 with covering all GS divisions of the district effectively. The surveys on Three wheeler service relevant to this economic census is also carried out in the year 2015.

**Fourth Stage** - Listing Economic activities such as Industries, Trade and Service Sectors.

#### **Survey on Three Wheeler Service:**

The survey on Three Wheeler service which contribute the country's economy significantly has been conducted under 02 stages.

##### **Stage 1 - Listing of Three wheelers under the samples selected**

Here 469 three wheelers are taken as samples and listed all the wheelers in the district at divisional level- Table ECL-T)

##### **Stage 2- Collection of Detailed Data**

The details of around 100 three wheelers' owners were collected by the Statistical Officers ( Incharge of Divisions) as covering all DS Divisions from the selected samples. Table ECE-S 3A

Moreover the following survey was carried out throughout the district regarding Economical census of 2013/2014.

#### **Re-Examining of Tables**

Around 100 thousand Tables under the SH1 and SH2 were fulfilled on the Agricultural statistics that was conducted in the year 2014 and re-examined by the District Statistical Branch from Jan. 2015 to Sep. 2015 and submitted to the Head office.

## **02. Annual Industrial Survey 2015**

The annual survey on Industry was conducted in the month of November and December this year by the Dept. of Census and Statistics. Here detailed data is collected based on the samples taken from around 300 organizations all over the district. The main aim of such activity is preparation of annual report regarding the production of technological sector, formulation of indicators relevant to the industrial sector and providing information for policy formulation of the government on industrial development.

## **03. Survey on Annual Construction Industry**

The annual construction industry conducts annually from 1993 by the Dept. of Census & Statistics to calculate the value added income to the National income received through the construction industry by input, output, service structure and salaries and remuneration.

The details of contractors engaged in construction sector in the year 2014 in Puttalam district has been collected under the Survey on Annual Construction Industry – 2015.

## **04. Training for Field Officers regarding the Survey on Paddy Harvests**

The training for field officers newly recruited was conducted this year in perfect manner regarding the survey on Paddy Harvest. The Divisional Secretary, Asst. Divisional Secretary, Divisional Development officers and officers concerned of Agriculture and Agrarian Development Department had participated for this training.

## **05. Celebration of World Statistical Day.**

This World Statistical Day was introduced by the UNO in 2010 and this day is celebrated all over the world once in five years in grand scale. The theme of this year Statistical Day was “Enrich life through Accurate Data”. The second World Statistical Day was celebrated on 20<sup>th</sup> of October 2015.

Accordingly the celebrating event was organized by the District Statistical Branch. A seminar to make awareness to the govt. Servants, School Children and the Public of the District was conducted on 20<sup>th</sup> Oct. 2015 at the auditorium of the District Secretariat at 9.00 a.m.

## **06. Paddy Statistics**

This statistic is collected annually. Collection of information is being done by the Grama Officers and Name of the cultivators, as well as the extent, sown extent and harvested extent of paddy are being collected. Information collected are analyzed/summarized and sent to Head Office. Both in Maha and Yala seasons Paddy is cultivated in the district. Sown and harvested figures for Maha 2014/15 have been collected and sent to Head Office.

Extent of land utilized for sown, Cultivation and harvest of Paddy in 2014

<b>Irrigation system</b>	<b>Major irrigation</b>	<b>Minor irrigation</b>	<b>Rain Water</b>	<b>Total</b>
Extent of land used for sown (Acre)	20220	29681	6888	56789
Extent of land cultivated under Maha season 2014/15 (Acre)	19416	25697	4597	49710
Extent of land cultivated under Yala season 2015 (Acre)	17858	18120	1896	37874

### **07. Highland crops and Livestock statistics**

Highland crops statistics are being collected annually for the Maha and Yala seasons and the Livestock statistics are being collected once a year (as at June 30th of each year).

This information has been collected and summaries have been sent to head office. Other than this from the records maintained by the local government offices number of animals slaughtered at the Slaughter houses have been collected for the year 2014 and forwarded to head office.

### **08. Building Statistics**

Information on building permit issued for new building or repairs (addition/alteration) and the Details of Confirmation Certificates issued have been collected from the local government offices and returned to head office by monthly from January to December 2014.

### **09. Local Government Statistics**

Annually information on local bodies is being collected. This information includes the centers maintained by these offices (Libraries, playgrounds, markets, cemeteries etc.), number of Employees and their salaries, expenses incurred and the expenditure made. This information have been collected and sent to head office for the year 2014

### **10. Locally Produced Agriculture Product's prices and Town Retail Prices.**

The prices - Farm Gate prices - (i.e. the price that the farmer is getting from the seller) for the Locally produced items (such as vegetables, fruits, fish etc.) have been collected monthly from Selected centers of each DS Divisions. These prices have been collected monthly and after Checking sent to head office.

Other than these, retail prices are collected in Jaffna Town during this year for commodities Categorized under the following groups.

- a. Group IA: Prices of commodities coming under this group (prices are expected to change Weekly) are collected on every Tuesday and some of the items are Rice, wheat flour, Bread, Sugar, red onion, potato etc.
- b. Group I: Prices of commodities coming under this group are collected by fortnightly and The items includes are vegetables, fish, chicken etc.
- c. Group II: Prices of commodities coming under this group are collected once in a month Where the price of the commodities is stable over a month such as Fuel and light, on Durable Household goods etc.
- d. Group III: Under this group the charges such as laundry charges, hair cutting charges, Tailoring charges, furniture, building materials, price of jeweler, medicine etc. The Prices are collected once in every three month.

## 11. Sample surveys

During the year Information from the selected householders has been collected by the Statistical officers of this division for the following Sample surveys:

**1. Labor Force Survey:** Around 70 households have been selected for a month in Puttalam district for the survey and from the Information collected from all over the Island reports are being published quarterly by the department. Some of the indicators estimated through this survey are given bellow

- ✓ Population 15 years and over
- ✓ Labor Force and Labor Force participation rate
- ✓ Employed and employment rate
- ✓ Unemployed and unemployment rate
- ✓ Literate and literacy rate
- ✓ Computer literate and computer literacy rate

### 2. Crop estimation survey for paddy

Crop estimation survey which is necessary for country's national policy and planning is conducted annually to estimate the production of paddy. During this year 160 plots are being selected from 179 villages. From this survey production of paddy in Puttalam district has been estimated to **62620** MT (metric ton) from the **15546** hectares of harvested area (Net) under Maha Season. 49227 MT of paddy had been produced by using 12896 hectare extent of land under Yala Season. In 2015.

### 3. Survey of construction Industry

This survey is conducted once in two years intend to supply data to national planning on Construction field and preparation of state polices as well as evaluation of progress on implementing those plans. Through this survey information such as input output laborers Involved etc. are collected. **Forty-six industries** are listed for this survey and the survey is being carried out.

### 4.Three months Industrial Survey

This information was collected from organizations selected as sample within the district. The national planning is carried out through the head office on the basis of this information's

### 08. Manual of District Statistics.

The publication that include the most important statistics such as Population, Shelter ,Education, Health, Fisheries, Highways and others of the district is issued by the Statistics Division for policy formulation and implementation of plans.

## 5.1.9 Ministry of National Dialogue, Coexistence & Official Languages.

### Programmes implemented in the year 2015

S/S No.	Program	Place	Date	Expenditure
01	Empowerment of Orphaned Children	Divisional Secretariat- Kalpitiya	2015.13.24	65970.00
02	Seminar for Grade 5 Children coinciding with Social Integration Week - 2015	Wattakandal M.V.-Tamil Medium	2015.08.01	22482.00
		Ulukkapallam M.V	2015.08.01	20202.00
		Saliyawewa Model School-Sinhala Medium	2015.08.14	23920.00
		Vanathawilluwa Rangana Hall – Sinhala Medium	2015.07.28	25990.50
03	Workshop to make LED Bulb	District Secretariat- Puttalam	2015.12.03	5345.00
04	Orchid Cultivation training	Thilladiya	2015.11.23	2200.00



**Seminar for Grade 5 Scholarship students  
Coinciding with the Social Integration Week.**



**Carrier Guidance programme**

### 5.1.10 Activities of Establishment Branch

S/No	Name of the Training	Target Group	Based year	In charge (Supervision)	Expenditure	Status
01	Workshop on Pension Payment	Accountant, Pension Officers of DS offices, Officers responsible for Personal File, and other officers of District Secretariats and officers from other Department.	2015	Chief Internal auditor	97930.00	All Programmes had been implemented
02	Basic Training on Computer	Development officers attached to the Divisional Secretariats under the Ministry of Public Admn.	2015	Addl. District Secretary	15830.00	
03	Computer training on Office activities.	Management Asst. and Development officers of District Secretariat – 03 Days	2015	Addl. District Secretary	15464.00	
04	Awareness Programme of Grama Niladhar's Office and Duties.	Grama Niladharies selected in Grama Niladharies Competition- Officers got of 1 <sup>st</sup> and 2 <sup>nd</sup> rank and the last rank.	2015	Addl. District Secretary	3200.00	
05	Computer Skills on Office System.	Management Asst. and Development officers of District Secretariat – 04 Days	2015	Addl. District Secretary	16275.00	
06	Induction Training for Management Asst. Newly Recruited.	Newly recruited & Officers who do not get Induction Training 10Days Programme- 118 Participants)	2015	Addl. District Secretary	253559.00	
07	Induction Training for OES employees recruited on casual & Temporary basis for providing	Employees recruited under Casual Basis – 12 employees	2015	Addl. District Secretary	86440	



	Permanency.					
08	Training for Office Employment Services	Office Asst. of DS Officers – 100 Participants	2015	Addl. District Secretary		
09	Replies for Audit Queries	Divisional Secretaries , Asst. Divisional Secretaries and Accountants of DS Offices		Chief Internal Auditor	35715.00	
10	Study Tour to GS Offices	GGrama Niladharies who won 1 <sup>st</sup> and 2 <sup>nd</sup> rank in GS Competition.	2015	Addl. District Secretary	33850.00	
	Total				333504.00	

## 5.2 Progress of Social Service

### 5.2.1 Religious and Cultural Activities.

#### Cultural Unit –District Secretariat

S/No .	Date	Program	Place	Allocation	Funding Institution	Supervision
01	2015 / 11 / 03	Literary festival of Puttalam District	Auditorium of District Secretariat- Puttalam	75000.00	Dept of Cultural Affairs.	District Secretariat, Puttalam
02	2015/02/05	District Dance Competition	Buddhist Centre Puttalam	Rs. 15000.00	Dept of Cultural Affairs.	District Secretariat, Puttalam



#### **Ministry of Religious Affairs:**

##### **Progress of Buddhist Affairs Division of the district Secretariat for the year 2015.**

S.N o.	Programme	Place	No. of participants	Date of Commencement	Expenditure
01	Daham Sarasaviya Budhdha Dharma Course	Chilaw Devagiri Temple	57	2015.06.06	84575.00
02	Pali language proficiency Exam -2014	Chilaw Devagiri Temple	29	2015.02.14	2120.00
03	Pali language proficiency Exam -2015	Chilaw Devagiri Temple	40	2015.03.07	82000.00
04	Teachechin Exam for Daamm School	Ananda National School, Puttalam	400	2015.05.23	17733.00
05	Religious Song Competition for Govt. Servants	District Secretariat, Puttalam	Group 15	2015.04.05	13733.00

## 5.2.2 Child Protection Activities

S/ No .	Exp.Head	Fund Received Rs.	No.of Prog.	No. of Beneficia ries	Expenditure
01	Awareness programme on Guidelines for Rural Child Development Committee	40000.00	05	300	40000.00
02	Capacity Building Programme- Child Rights Promoting Officer	52250.00	01	16	52250.00
03	Two months Progress Review Meeting- Child Rights Prompting Officer	15000.00	01	17	15000.00
04	Appraisal Programme –Creations of National Child Councils. Intl' Children Day 2014	10000.00	01		150000.00
05	Musical programme – Intl' Children Day	5000.00		75	5000.00
06	02 Days Residential Media Camp	120000.00	01	100	120000.00
07	District Child Council Meeting	10000.00	01	65	10000.00

### 5.2.3 Social Service Activities

- Meeting of Sivashakthi Organization
- Workshop on Self Employment
- Livelihood Assistance- Assistance for Self Employment and Training for people With disability to boost their livelihoods.
- Training on Mobile Phone repairs and Tailoring under the Diri Saviya Project run by the World Bank
- Establishing of center in Chilaw for Skill Development of Children with Disability.
- Training on Accounts and Book Keeping for Leaders of Swashakthi organization and distribution of stationeries.
- Awareness programme for parents of the children with disability.
- Sharing Experience – Workshop.
- Awareness programme on C.B.R. links.
- Physical Treatment Clinic.
- “Dethutuware Abiman” competition V.C.T. Interview
- Artificial limbs Clinic
- Athletics for People with Disability.
- Supervising of Skill Development Centre, Puttalam.
- Supervising of Skill Development Centre, Chilaw.
- Improvement of Access facilities - Workshop.



Training Programme



Assistance for Self Employment



Training for person with Special needs.



Child Clinic

## 5.2.4 District Sports Activities

S. No	Date	Programme	Venue	No. of Participants	Allocation Rs.
01	2015Jan.	Establishment of Kreedha Shakthi Forum	Thoduwwa Beach	Forum 07	25000.00
02	2015.02.28	Volleyball training camp	Pradesiyashabha - Wennappuwa	52	25000.00
03	2015.03.20	Netball training camp	Balika Vidyalaya- Puttalam	61	25000.00
04	2015.04.09	Opening of Gyms for Officers of District Secretariat	District Secretariat- Puttalam	60	25000.00
05	2015.04.24	Sports Events of New Year.	Sports ground of Wennappuwa Albert F. pieris	Officers of District Secretariat & Their families.	25000.00
06	2015.04.30	Wrestling training	Dematapittiya Govt. School- Puttalam	68	25000.00
07	2015.06.12	Beach Volleyball training camp	Thalawila Beach		25000.00
08	2015.07.10	Athletics training camp	Anmaduwa M.M.V	120	25000.00
09	2015.09.12	Judo training camp	Madampe Sebasthiyan Vidhyalaya	Sports men & women of Schools in Chilaw Zone of the district and Sports Societies	25000.00
10	2015.10.30	Athletics training camp	Puttalam Ananda National School	Sports men & women of selected in provincial Competition in Puttalam Zone of the district	25000.00
11	2015.11.13	Beach Volleyball training camp	Sports man & woman of Wennappuwa, Mahawewa, Madampe DS Divisions.	60	25000.00

## 5.3 Progress of Development Activities

### 5.3.1 District Planning Activities

Construction Activities of State Construction institute for the Year 2015 under the Deyatta Kirula

S.No	Divisional Secretariat	Development Proposals	Institute	Total Estimated Value With VAT Rs.
<b>Maternity Health Centre</b>				
1	Arachchikattuwa	Anavilundawa Maternity Health Centre	SD&CC	11,327,064.00
2	Arachchikattuwa	Andanganaya Maternity Health Centre	SD&CC	11,335,542.00
3	Madampe	Kurukkuwa Maternity Health Centre	SD&CC	14,841,044.00
4	Chilaw	Kakapalliya Maternity Health Centre	SD&CC	11,859,531.00
5	Mahawewa	Haththeeniya Maternity Health Centre	SD&CC	14,881,155.00
6	Mahawewa	Yatikalana Maternity Health Centre 61	SD&CC	11,366,179.00
7	Anamaduwa	Ihala Uswewa Haththeeniya Maternity Health Centre	CECB	13,469,391.00
8	Nawagaththegama	Central Maternity Health Centre-Nawagaththegama	CECB	14,707,120.00
9	Pallam	Pallama Maternity Health Centre	CECB	13,469,391.00
10	Mahakumbukkadawala	Mahakumbukkadawala Maternity Health Centre	CECB	13,469,391.00
11	Puttalam	Savivapura Maternity Health Centre	CECB	18,274,314.00
12	Puttalam	Thilladiya Maternity Health Centre	CECB	18,274,314.00
13	Kalpitya	Karamba Maternity Health Centre	CECB	13,469,391.00
14	Mundel	Kadayamotta Maternity Health Centre	CECB	13,469,391.00
15	Dankotuwa	Yogiyana Maternity Health Centre	SEC	9,756,394.00
16	Dankotuwa	Haldaduwana Maternity Health Centre	SEC	9,742,943.00
17	Wennappuwa	Wennappuwa Maternity Health Centre	SEC	12,571,566.00
18	Wennappuwa	Ulhitiyawa Maternity Health Centre	SEC	12,801,063.00
19	Naththandiya	Mudukattuwa Maternity Health Centre	SEC	12,571,644.00
20	Naththandiya	Nattandiya Maternity Health Centre	SEC	9,738,806.00

Weekly Fair				
21	Arachcikattuwa	Wijayakatupotha Weekly Fair	SD&CC	9,485,159.00
22	Chilaw	Karawittagara Weekly Fair	SD&CC	12,003,437.00
23	Chilaw	Kakappalliya Weekly Fair	SD&CC	11,479,083.00
24	Mahawewa	Mahawewa Weekly Fair	SD&CC	36,246,574.00
25	Pallama	Palalma Weekly Fair	CECB	26,010,753.00
26	Mundel	Madurankuliya Weekly Fair	CECB	24,704,833.00
27	Puttalam	Puttalam Weekly Fair	CECB	30,730,477.00
28	Wennappuwa	Wennappuwa Weekly Fair	SEC	9,485,159.00
29	Nattandiya	Marawila Weekly Fair	SEC	39,432,141.00
30	Kalpitiya	Anawasal Thorayady road Weekly Fair	SEC	39,503,821.00
Fitness Centre				
31	Madampe	Construction of fitness centre at Thaniwella	SD&CC	8,005,897.00
32	Mahawewa	Construction of fitness centre at at Mahawewa Tank side	SD&CC	6,981,594.00
33	Nattandiya	Construction of fitness centre at Mudukattuwa, Nattandiya.	SEC	12,884,768.00
Meditation Centre				
34	Chilaw	construction of Chilaw Meditation Centre	SD&CC	13,323,282.00
35	Anamaduwa	construction of Anamaduwa Meditation Centre	CECB	13,426,455.00
Bus stand				
36	Chilaw	Chilaw Bus stand	SD&CC	96,899,167.00
37	Wennappuwa	Wennappuwa Bus stand	SEC	42,136,405.00
38	Nattandiya	Nattandiya Bus stand	SEC	52,915,527.00
39	Kalpitiya	Kalpitiya Bus stand	SEC	43,118,470.00
Auditoriums				
40	Puttalam	Puttalam Auditorium	CECB	55,576,744.00
41	Dankotuwa	Dankotuwa Auditorium	ANB/SRB	101,639,204.00
42	Mahawewa	Mahawewa Theatre construction	RSB	10,897,034.00

43	Mahawewa	Iranawila Theatre construction	RSB	5,581,528.00
44	Mahawewa	Mahawewa Theatre	AB	5,581,528.00
45	Anamaduwa	Anamaduwa – Town Hall construction	PED	24,939,854.00
46	Karuwalagaswewa	Construction of Auditorium in Karuwalagaswewa	RC	14,825,240.00
47	Nawagaththegama	Construction of Auditorium in Nawagaththegama	AB	13,154,511.00
48	Vanathawilluwa	Construction of Auditorium in Vanathawilluwa	SB	15,471,078.00
49	Chilaw	Construction of Fishing Community Centre in Chilaw	KMC	5,026,857.00
<b>Children Parks/ Vehicle park/Commuters Rest Room</b>				
50	Chilaw	Chilaw Beach park	SD&CC	31,665,381.00
51	Arachchikattuwa	Rest room by the Manaweriya Road	KSB	7,752,868.00
52	Madampe	Construction of Vehicle park at Thinipittiya.	NB	5,263,249.00



## Agricultural Entrepreneurships of Youths -2015

*Fund Allocated for Puttalam District by the Ministry. -Rs. 1.93923 millions.*

Entrepreneurs Name	Name of the Project	Estimated Amt. Rs.	50% of approved contribution Rs.	Allocation provided in Rs.
Anuruddhika Srimali	Safe hut for Mushroom Cultivation	159,265.00	80,000.00	79,632.00
J.A.M.S. Pushpakumara	Raw materials for Pineapple Cultivation- 4 ¼ Acres.	645,000.00	322,500.00	290,250.00
H.K.Kumari	Electric pumping motor and Water tank for papaw cultivation	236,000.00	100,000.00	100,000.00
R.W. Chamika Samanlatha	Establishment water sprinkle system under water pump for additional food crops	103000.00	51,500.00	51,500.00
R.R.M.C. Rathnayaka	Chilly cultivation under water sprinkle irrigation system	149,500.00	75,000.00	74,750.00
D.M.Prasad udayanga	Safe hut for Mushroom Cultivation	427,405.00	213,700.00	213,702.00
P.M.Sunith Fernando	Fruits cultivation under coconut crops	1,133,400.00	289,200.00	289,250.00
G.M.V.S. Abeyrathna	Orange cultivation under sprinkle watering system	251,090.00	126,300.00	125,545.00
B.Asoka Deepani	Equipments to develop Fashion fruit Cultivation	671,000.00	222,530.00	222,675.00
M.G.S.C. Fernando	Papaw cultivation under sprinkle watering system with water pump.	360,000.00	180,000.00	180,000.00
Total		4,135,660	1,660,730	1,518,054.00

## **Cultivation of Commercial Crops - 2015**

***Fund allocated for Puttalam District by the Ministry -Rs. .1,638,493.00***

Entrepreneurs Name	Name of the Project	Estimated Amt. Rs.	50% of approved contribution Rs.	Allocation provided in Rs.
W.M.Ranjani Wijepala	Indoor hut for crop nursery	202,750.00	101,375.00	101,375.00
A.H.M.Gamini Abeysinghe	Indoor hut for crop nursery	202,750.00	101,375.00	101,375.00
R.H.M.Herath banda	Water supplying system for orange cultivation	219,500.00	109,750.00	109,750.00
A.H.M.Samantha Abeyrathna	Water supplying system for Water melon cultivation	248,137.00	124,068.00	124,068.00
H.M.T.P.Herath	Fitting of 1000 no. posts for Fashion fruit cultivation	499,510.00	249,755.00	249,755.00
M.I.M.A.Raheem	Establishment of water pump and sprinkle watering system for onion cultivation	191,600.00	95,800.00	95,800.00
W.T.N.Fernando	Establishment sprinkle watering system for onion cultivation and Vegetables	119,550.00	59,775.00	59,775.00
H.B.Vipul Chandrasantha	Establishment of sprinkle watering system for Green leaf cultivation	150,000.00	75,000.00	75,000.00
A.A. Jayantha Amarasinghe	Fitting of water pump and water supplying system for pineapple cultivation.	143,000.00	71,500.00	71,500.00
R.M.Sriyani Malkanthi	Fitting of water pump and water supplying system for Thibbattu cultivation.	60,000.00	30,000.00	30,000.00
P.M.Jayathissa	Water sprinkling system for orange cultivation.	42,245.00	21,122.00	21,122.00
H.A.Gunawardena	Water sprinkling system for orange cultivation.	218,000.00	109,000.00	75,000.00
Vimal Samarathunga	Water sprinkling system, Tank and indoor facilities for Fashion fruit cultivation.	575,000.00	287,500.00	287,500.00
Total		2,872,042	1,436,020	1,402,020.00

**Deyatta Kirula Nation Development Programme - 2014**  
**Progress of Development Activities Implemented as at 2015.12.31**

Construction activities carried out by Divisional Secretariats

District- Puttalam

S/N o	DS Division	No of Projec ts (3))	Fund Allocate d Rs.mil. (4)	Amt. estimated. (5)	H වැඩ අවසන්	Fund Released	Gross expenditure RS. ( I ) + ( II ) + Admn.Exp.
1	Dankotuwa	29	38.3	38,427,661	25	27,739,754	24,195,512
2	Wennappuwa	20	42.7	43,803,848	13	43,936,875	35,270,337
3	Nattandiya	26	38.0	21,604,958	13	17,993,223	11,385,591
4	Mahawewa	53	36.2	49,397,141	7	22,738,322	18,909,024
5	Madampe	86	27.0	22,180,073	34	20,798,672	19,855,669
6	Chilaw	50	43.4	40,651,164	23	33,475,403	23,585,647
7	Arachchikattuwa	27	40.9	48,635,393	14	27,395,121	17,254,464
8	Mundel	21	48.7	47,822,959	9	36,288,704	29,717,069
9	Kalpitiya	16	46.1	53,298,998	6	16,393,949	12,773,996
10	Puttalam	47	69.8	75,691,650	22	52,783,099	42,018,626
11	Vanathawilluwa	21	38.4	36,735,220	20	35,537,909	29,294,132
12	Karu'gaswewa	10	55.6	40,167,166	3	17,650,680	8,016,324
13	Nawagattegama	19	49.5	49,165,171	15	15,591,822	12,763,811
14	Anamaduwa	33	68.9	110,245,102	29	17,869,581	11,952,768
15	Maha'kadawala	28	53.7	48,989,606	18	28,923,149	18,301,728
16	Pallama	21	41.0	25,136,538	14	24,160,792	13,304,356
<b>Total</b>		<b>507</b>	<b>738.2</b>	<b>751,952,649</b>	<b>265</b>	<b>439,277,055</b>	<b>328,599,056</b>
	<b>SD&amp;CC</b>	15	225.0	304,159,551	5		141,092,103
	<b>CECB</b>	13	222.8		6		

				280,786,070			130,289,564
	<b>SEC</b>	13	255.0	352,406,953	6		129,207,786
	District Engineer	11	15.0	272,524,329	3		90,837,347
	<b>Total</b>	52	718	1,209,876,903	20	0	491,426,799
	Gross Total	559	1,456	1,961,829,552	285		882,800,824

Sellankandal Well construction



Renovation of Attawilluwa Ela



Maternity Clinic-Nainamadam



Weekly Fair - Wennappuwa



### 5.3.2 Activities of Small Business Enterprise Unit

S/No	Programmes	Targets of Annual Programmes	No.of Programmes	Participants	Expenditure	Percentage of Target Achieved
1	One Day Awareness Programme - General	05	11	444	-	220%
2	Mobile Awareness Prog'	02	02	132	10 711.16	100%
3	Business Guidance Prog''	05	05	124	69370.00	100%
4	Business Management Training Prog''	04	02	49	59054.00	50%
5	Marketting management Training Prog''	01	-	-	-	-
6	Marketing management TrainignProg''	02	-	-	-	-
07	Denayana Mang-Accounts Training.I''II''III	03	01	-	15500.00	33%
08	General Accountings	01	-	-	-	-
09	Training Prog' on Business Planning	03	02	44	44110.00	66%
10	Computer Training for Business	01	-	-	-	-
11	Technological training	03	03	131	93735.00	100%
12	Establishment of Business union	03	03	170	36839.00	100%
13	Meeting on Feedback	10	06	117	34327.00	60%
14	Project inspection	07	06	131	69436.39	85%
15	Exhibition of Selling goods		01	14	69619.60	200%
16	Fund coordination	-	01	75	-	-



Technical training



Business Management training



Exhibition



### 5.3.3 Samurdhi Activities

#### House Construction under DS Divisional Level

S/ No	DS Division	331-2-2-2502 No.of Houses	Approved amt.	123-2-5-39-2502 No.of House s	Approved Amt.	Total no. of House s	Approve d total Amt.	No of Houses compl eted
1	Anamaduwa	2	150000	5	340000	7	490000	7
2	Arachchkattuwa	1	75000	6	450000	7	525000	7
3	Chilaw	2	150000	5	375000	7	525000	7
4	Dankotuwa	1	75000	8	600000	9	675000	9
5	Kalpitiya	1	75000	4	300000	5	375000	5
6	Karu'gaswewa	1	75000	3	225000	4	300000	4
7	Madampe	2	150000	5	375000	7	525000	6
8	Maha'kadawala	3	225000	3	225000	6	450000	4
9	Mahawewa	1	75000	8	600000	9	675000	9
10	Mundel	6	450000	4	300000	10	750000	10
11	Nattandiya	1	75000	7	525000	8	600000	8
12	Nawagat'gama	1	75000	4	235000	5	310000	5
13	Pallama	1	75000	4	300000	5	375000	5
14	Puttalam	1	75000	3	225000	4	300000	4
15	Vanathawilluwa	1	75000	4	300000	5	375000	4
16	Wennappuwa			7	525000	7	525000	7
	Total	25	1875000	80	5900000	105	7775000	101

## Diriya Piyasa Housing Project- Progress as at 2015.12.31

S/No	DS Division	No. of House Approved	Allocation granted
1	Anamaduwa		
2	Arachchkattuwa	7	525000
3	Chilaw	7	525000
4	Dankotuwa	9	675000
5	Kalpitiya	5	375000
6	Karu'gaswewa	4	300000
7	Madampe – No of Houses incomplete - 01	7	525000
8	Maha'kadawala- No of Houses incomplete - 02	6	450000
9	Mahawewa	9	675000
10	Mundel	10	750000
11	Nattandiya	8	600000
12	Nawagat'gama	5	310000
13	Pallama	5	375000
14	Puttalam	4	300000
15	Vanathawilluwa- No of Houses incomplete - 01	5	375000
16	Wennappuwa	7	525000
	<b>Total</b>		<b>7775000</b>



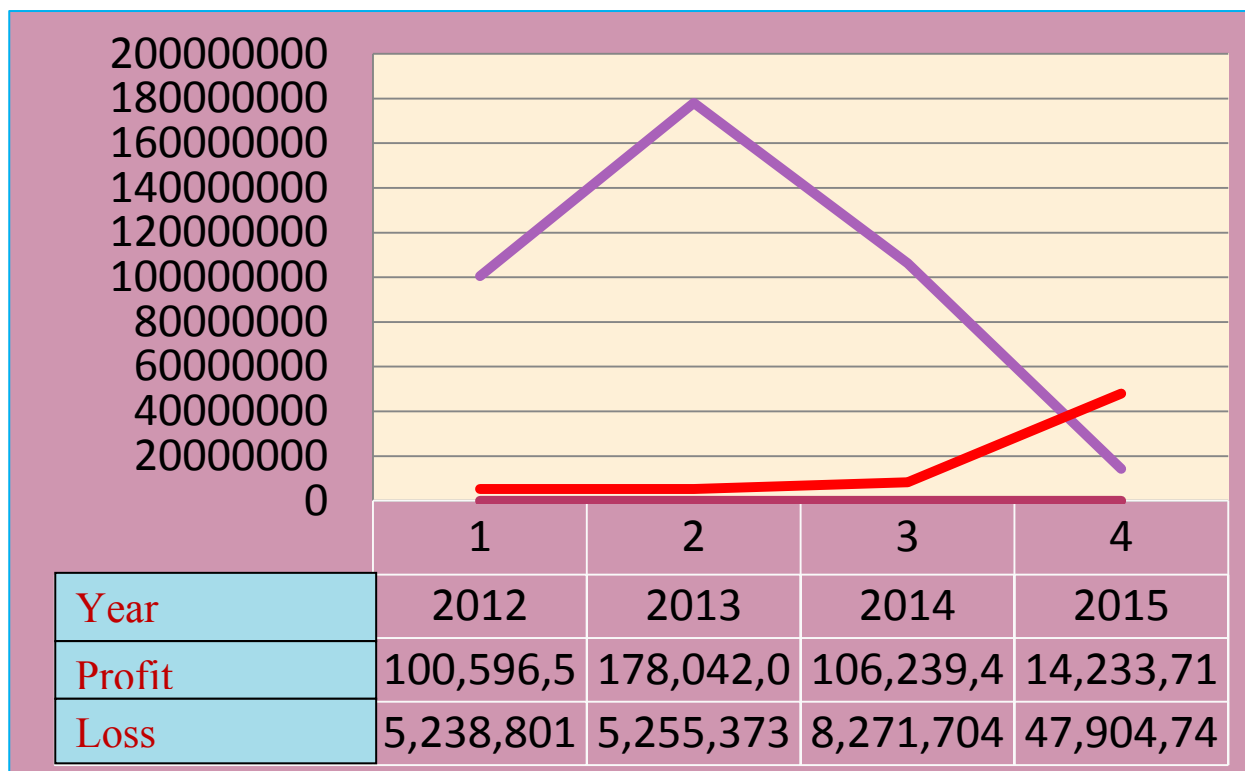
No of Bank Deposits of CBO's- Divineguma 2015.12.31

S/No	Type of Deposits	A/c No.	Amt. rs. .000”
1	Part	178574	463425
2	<b>Membership deposit</b>	158651	1,218,943
3	<b>Children deposit</b>	67827	241,554
4	<b>Diriyamatha Deposit</b>	54679	141,734
5	<b>Deposit of non members</b>	23151	197,655
6	<b>Group Deposit</b>	17668	431,328
7	<b>Savings</b>	106800	1,440,907
8	<b>Sisuraka</b>	8326	26,722
Total		615676	4,162,268

Profit & Loss Details for year 2015- Puttalam District

DS Division	Profit (Rs.)	Loss (Rs..)
<b>Anamaduwa</b>	473,692.42	3,218,666.84
<b>Arachchkattuwa</b>	2,639,627.26	2,235,323.17
<b>Chilaw</b>	62,734.34	4,145,107.25
<b>Dankotuwa</b>	98,100.08	2,755,960.49
<b>KAlpitiya</b>	1,898,644.49	-
<b>Karu'gaswewa</b>	-	5,421,698.62
<b>Madampe</b>	799,859.43	2,795,816.36
<b>Maha'kadawala</b>	-	3,559,601.69
<b>Mahawewa</b>	790,680.60	1,054,468.47
<b>Mundel</b>	6,952,454.51	201,892.39
<b>Nattandiya</b>	-	6,772,366.86
<b>Nawagat'gama</b>	-	2,906,450.46
<b>Pallama</b>	-	3,318,900.16
<b>Puttalam</b>	517,926.82	1,381,243.39
<b>Vanathawilluwa</b>	-	4,983,721.45
<b>Wennappuwa</b>	-	3,153,524.98
<b>Total</b>	14,233,719.95	47,904,742.58

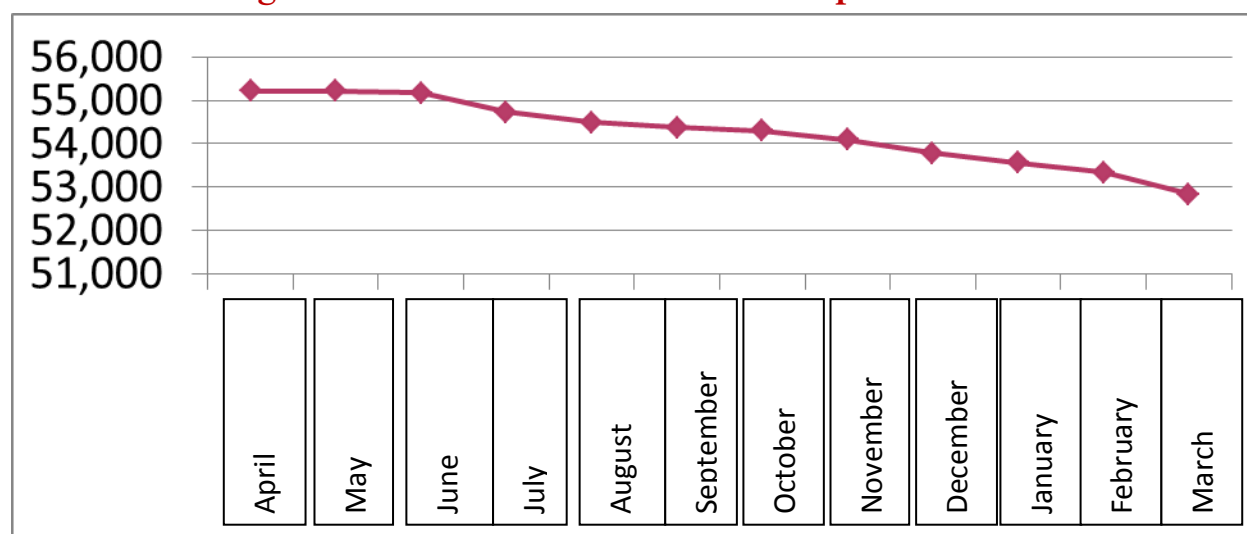
## Information on Loss for the 2012/2013/2014/in Puttalam District



## Report on Divineguma Subsidiary Payment. -2015

Name of DS Division	3500 - Allowance	2500 Allowance	1500 Allowance	420 Allowance	Total
Arachchikattuwa	851	416	141	47	2724
Maha'kadawala	702	413	958	34	2107
Chilaw	812	443	1746	36	3037
Anamaduwa	1738	968	2274		4980
Mundel	3170	1119	1538	239	6066
Puttalam	1669	752	1352	135	3908
Wennappuwa	1790	813	2109	24	4736
Nattandiya	959	485	1386	107	2937
Nawagattegama	721	435	935	21	2112
MAhawewa	668	412	1485		2565
Karu'wewa	647	354	865	317	2183
Pallama	730	304	939	30	2003
Madampe	674	366	1228	26	2294
Vanathawilluwa	823	339	679	11	1852
Kalpitiya	2625	826	1360	222	5033
Dankotuwa	1488	744	1842	230	4304
<b>Gross Total</b>	<b>20067</b>	<b>9189</b>	<b>22106</b>	<b>1479</b>	<b>52841</b>

### District Divineguma Subsidiaries Chart –From April 2015 to March 2016



### 5.3.4 Details of payments made under the line Ministries and other Departments

S.No	Object Code/H eads of Exp'	Expenditure Details & Categories of Ministry/Department	Amt. of Allocation	Expenditure	Saving
1	001	<b>Presidential Secretariat</b>			
		Capital Expenditure	1,956,340.00	1760490.00	195850.00
		Recurrent Expenditure	0.00	0.00	0.00
2	101	<b>Ministry of Budhdhasasana</b>			
		Capital Expenditure	569,200.00	566599.14	2600.86
		Recurrent Expenditure	0.00	0.00	0.00
3	102	<b>Ministry of Finance &amp; Planning</b>			
		Recurrent Expenditure	887,452.00	864522.00	22930.00
3	104	<b>Ministry of Policy planning &amp; Economic Affairs</b>			
		Capital Expenditure	446,664.55	446664.55	0.00
		Recurrent Expenditure	224526246.37	224526246.37	0.00
5	105	<b>Ministry of National planning &amp; Economic Affairs</b>			
		Capital Expenditure	11,761.31	11761.31	0.00
		Recurrent Expenditure	88,595,075.00	-3181104.77	91776179.77
6	106	<b>Ministry of Disaster Mgmt.</b>			
		Capital Expenditure	12,416,144.41	12416144.41	0.00
		Recurrent Expenditure	10,530,000.00	7266242.50	3263757.50
7	110	<b>Ministry of Justice</b>			
		Capital Expenditure	8,182,350.00	8161360.00	20990.00
8	111	<b>Ministry of Health, Nutrition &amp; Indigenous Medicine.</b>			
		Capital Expenditure	49,000.00	44830.00	4170.00
9	112	<b>Ministry of Foreign Affairs/Telecommunication &amp; Digital Infrastructures.</b>			
		Capital Expenditure	98,500.00	97166.00	1334.00
10	116	<b>Ministry of Cooperative &amp; Internal Trade.</b>			
		Recurrent Expenditure	699,951.86	699951.86	0.00
11	118	<b>Ministry of Agriculture</b>			
		Capital Expenditure	5,356,178.00	4209893.66	1146284.34
		Recurrent Expenditure	22,594,077.42	21022913.31	1571164.11
12	120	<b>Ministry of Child &amp; Woman's Affairs</b>			
		Capital Expenditure	6,496,204.96	4380873.76	2115331.20
		Recurrent Expenditure	0.00	0.00	0.00
13	121	<b>Ministry of - Home Affairs/Public Admn/Fisheries &amp; Aquatic Resource Development</b>			
		Capital Expenditure	345,482,073.19	311775484.64	33706588.55
		Recurrent Expenditure	22,278,701.71	22278701.71	0.00
14	123	<b>Ministry of Housing &amp; Samurdhi</b>			
		Capital Expenditure	571,000,000.00	37333096.12	533666903.8

					8
15	124	<b>Ministry of Social Empowerment &amp; Welfare</b>			
		Capital Expenditure	17,297,207.20	17297207.20	0.00
		Recurrent Expenditure	369,382,724.00	369056743.00	325981.00
16	130	<b>National languages &amp; Social integration/Ministry of Productivity promotion /Ministry of National Dialogue,Co-existence &amp; Official Languages</b>			
		Capital Expenditure	3,277,224.49	2541545.25	735679.24
		Recurrent Expenditure	9,993,055.29	9993055.29	0.00
17	136	<b>Ministry of Tourism &amp; Sports</b>			
		Capital Expenditure	2,792,518.00	2652777.60	139740.40
18	149	<b>Ministry of Industrial Trade</b>			0.00
		Capital Expenditure	210,000.00	210000.00	0.00
19	151	<b>Ministry of Fishery &amp; Aquatic Resource Development</b>			
		Capital Expenditure	9,976,061.35	8219491.30	1756570.05
20	153	<b>ministry of Land &amp; Land Development</b>			
		Capital Expenditure	44,564,198.49	44559456.49	4742.00
		Recurrent Expenditure	234,660.00	234660.00	0.00
21	155	<b>Ministry of Provincial &amp; Local Government</b>			
		Capital Expenditure	162,500.00	70000.00	92500.00
22		Recurrent Expenditure			
	157	<b>Ministry of National Dialogue</b>			
		Capital Expenditure	594,442.00	594442.00	0.00
		Recurrent Expenditure	326,854.75	326854.75	0.00
23	163	<b>Ministry of National Dialogue</b>			
		Capital Expenditure	710,002.00	456107.29	253894.71
		Recurrent Expenditure	0.00		0.00
24		<b>Ministry of Productivity Promotion</b>			
	181	Capital Expenditure			0.00
		Recurrent Expenditure	1,477,336.00	1191517.32	285818.68
25	182	<b>Ministry of Foreign Employment Promotion &amp; Welfare</b>			
		Capital Expenditure	313,500.00	290658.00	22842.00
		Recurrent Expenditure	21,387,210.00	20279078.69	1108131.31
26	196	<b>Ministry of Science, Technology&amp; Research</b>			
		Capital Expenditure	586,551.85	586551.85	0.00
		Recurrent Expenditure	190,895.27	190895.27	0.00
27	197	<b>Ministry of Skills Development &amp; Vocational Training</b>			
		Capital Expenditure	0.00	0.00	0.00
		Recurrent Expenditure	58,967.42	58967.42	0.00
28	198	<b>Ministry of Irrigation &amp; Water Resource Mgmt.</b>			

		Capital Expenditure	374,623.28	374623.28	0.00
		Recurrent Expenditure	66,632.33	66632.33	0.00
29	201	<b>Dept. of Buddhist Affairs</b>			
		Capital Expenditure	2,840,240.00	2794304.47	45935.53
		Recurrent Expenditure	1,169,353.00	1009177.18	160175.82
30	203	<b>Dept. of Christian Affairs</b>			0.00
		Capital Expenditure	1,300,000.00	1299998.00	2.00
		Recurrent Expenditure	0.00		0.00
31		<b>Dept. of Cultural Affairs</b>			
	206	Capital Expenditure	0.00		0.00
		Recurrent Expenditure	270,000.00	266560.00	3440.00
32	210	<b>Dept. of Govt. Information</b>			
		Capital Expenditure	0.00	0.00	0.00
		Recurrent Expenditure	8,000.00	7002.88	997.12
33	216	<b>Dept. of Social Services</b>			
		Capital Expenditure	200,000.00	179988.00	20012.00
		Recurrent Expenditure	10,807,920.27	10807920.27	0.00
34	217	<b>Dept. of Probation &amp; Child Protection</b>			
		Capital Expenditure	120,000.00	100855.00	19145.00
		Recurrent Expenditure	9,677,955.00	9349612.36	328342.64
35	219	<b>Dept. of Sports Development</b>			
		Capital Expenditure	0.00	0.00	0.00
		Recurrent Expenditure	500,000.00	498950.00	1050.00
36	227	<b>Dept. of Registration of Persons</b>			
		Capital Expenditure	0.00	0.00	0.00
		Recurrent Expenditure	13,634,262.00	13275043.08	359218.92
37	252	<b>Dept. of Census &amp; Statistics</b>			
		Capital Expenditure	1,003,798.70	1001474.15	2324.55
		Recurrent Expenditure	1,416,273.46	1373724.40	42549.06
38	253	<b>Dept. of Pension</b>			
		Capital Expenditure	0.00	0.00	0.00
		Recurrent Expenditure	179,403,173.00	74582579.35	104820593.65
39	254	<b>Dept. of Registrar General</b>			
		Capital Expenditure	0.00		
		Recurrent Expenditure	3,020,047.00	2683716.00	336331.00
40	284	<b>Dept. of Wild Life Conservation</b>			
		Capital Expenditure	15,000,000.00	10990005.24	4009994.76
		Recurrent Expenditure	0.00	0.00	0.00
41	285	<b>Dept. of Agriculture</b>			
		Capital Expenditure	0.00		0.00
		Recurrent Expenditure	742,776.15	742776.15	0.00
42	286	<b>Dept. of Commissioner Gen. of Land</b>			
		Capital Expenditure	282,800.00	278300.00	4500.00
		Recurrent Expenditure	0.00	0.00	0.00
43	307	<b>Dept. of Motor Traffic</b>			
		Capital Expenditure	0.00	0.00	0.00
		Recurrent Expenditure	739,100.00	699238.21	39861.79

44	326	<b>Dept. of Community Based Corrections</b>			
		Capital Expenditure	0.00		0.00
		Recurrent Expenditure	222,000.00	216260.75	5739.25
45	327	<b>Dept. of Land Use &amp; Policy Planning</b>			
		Capital Expenditure	1,904,500.23	1606541.27	297958.96
		Recurrent Expenditure	422,500.00	346766.51	75733.49
46	328	<b>Dept. of Manpower &amp; Employment</b>			
		Capital Expenditure	719,880.00	696016.30	23863.70
		Recurrent Expenditure	578,232.00	512524.98	65707.02
47	401	<b>Ministry of Internal Affairs, North Western Development &amp; Cultural Affairs.</b>			
		Capital Expenditure	1,850,454.18	1850454.18	0.00
		Recurrent Expenditure	0.00	0.00	0.00
48	402	<b>State Ministry of Youth Affairs</b>			
		Capital Expenditure	1,091,400.00	649716.22	441683.78
		Recurrent Expenditure	195,000.00	126151.84	68848.16
49	403	<b>State Ministry of Child Affairs</b>			0.00
		Capital Expenditure	1,148,800.00	645157.74	503642.26
		Recurrent Expenditure	94,879,266.00	5723522.15	89155743.85
50	408	<b>Ministry of Science, Technology &amp; Research</b>			
		Capital Expenditure	1,016,779.70	564470.75	452308.95
		Recurrent Expenditure	1,458,626.63	991270.19	467356.44
		<b>Total</b>	2,153,776,221.82	1,279,803,178.52	873,973,043.30

## 5.4 Annual Accounts

### Appropriation Account by Programmers - 2015

Expenditure Head No: 273

Name of Ministry / Department / District Secretariat : District Secretariat, Puttalam

Programme No. &amp; Title: 1 - Operational Activities

#### Summary of Recurrent and Capital Expenditure

Nature of Expenditure with DGSA format Reference	(1)	(2)	(3)	(4)	(5)	(6)	Page No. (Reference to relevant DGSA format)
	Provision in Budget Estimates	Supplementary Provision and Supplementary Estimate Allocation	Transfers in Terms of the F.R. 66 and F.R. 69	Total Net Provision (1+2+3)	Total Expenditure	Net Effect Savings/(Excess)	
	රු.	රු.	රු.	රු.	රු.	රු.	
(a) Recurrent (DGSA 3)	505,300,000	122,350,000	12,070,000	627,650,000	621,730,210	5,919,790	3
			(12,070,000)				
(B) Capital (DGSA 4)	55,800,000	1,500,000	0	57,300,000	57,254,501	45,499	4
<b>Total</b>	561,100,000	123,850,000	0	684,950,000	678,984,711	5,965,289	



## Recurrent Expenditure by Project

Expenditure Head No: 273

Name of Ministry / Department / District Secretariat : District Secretariat, Puttalam

Programme No. &amp; Title: 1 - Operational Activities

Project No./Names, personnel emoluments and other expenditure for all projects	(1)	(2)	(3)	(4)	(5)	(6)
	Provision in Budget Estimates	Supplementary Provision and Supplementary Estimate Allocation	Transfers in terms of the F.R. 66 and F.R. 69	Total Net Provision (1+2+3)	Total Expenditure	Net Effect Savings/(Excess) (4-5)
	Rs.	Rs.	Rs.	Rs.	Rs.	Rs.
<b>Project No:01&amp;Title : General Administration &amp; Establishment Services - District Secretariat</b>						
Personnel Emoluments	30,100,000	9,350,000	2,300,000	39,200,000	39,125,013	74,987
			(2,550,000)			
Other Expenditure	15,450,000	0	1,515,000	14,111,000	14,012,027	98,973
			(2,854,000)			
<b>Sub Total</b>	45,550,000	9,350,000	-1,589,000	53,311,000	53,137,040	173,960
<b>Project No:02 &amp;Title : Divisional Secretariat</b>						
Personnel Emoluments	412,000,000	113,000,000	5,000,000	526,000,000	521,263,430	4,736,570
			(4,000,000)			
Other Expenditure	47,750,000	0	3,255,000	48,339,000	47,329,740	1,009,260
			(2,666,000)			
<b>Sub Total</b>	459,750,000	113,000,000	1,589,000	574,339,000	568,593,170	5,745,830
<b>Grand Total</b>	505,300,000	122,350,000	0	627,650,000	621,730,210	5,919,790

### Capital Expenditure by Project

Expenditure Head -273

Name of Ministry / Department / District Secretariat : District Secretariat, Puttalam

Programme No. &amp; Title: 1 - Operational Activities

Project No. &amp; Title : 1 General Administration &amp; Establishment Services

				(1)	(2)	(3)	(4)	(5)
Object Code No.	Item No.	Financed by (Code No.)	Description of Items	Provision in Annual Estimates	Transfers in terms F.R. 66 and F.R. 69 and Supplementary Provision and Supplementary Estimate Allocation	Total Net Provision (1+2)	Total Expenditure	Net Effect Savings/(Ex cess) (3-4)
			<b>Rehabilitation &amp; Improvement of Capital Assets</b>					
2001		11	Buildings & Structure	5,000,000	1,500,000	6,500,000	6,498,429	1,571
2002		11	Plant Machinery and Equipment	650,000	0	650,000	650,000	0
2003		11	Vehicles	1,250,000	0	1,250,000	1,229,416	20,584
			<b>Acquisition of capital assets</b>					
2102		11	Furniture and office Equipment	5,000,000	0	5,000,000	4,995,778	4,222
2103		11	Plant Machinery and Equipment	2,500,000	0	2,500,000	2,493,062	6,938
2104		11	Buildings & Structure	40,300,000	0	40,300,000	40,300,000	0
			<b>Human Resource Development</b>					
2401		11	Training	450,000	0	450,000	442,289	7,711
			Total of Project 1	55,150,000	1,500,000	56,650,000	56,608,974	41,026
			<b>Human Resource Development</b>					
2401		11	Training	650,000	0	650,000	645,527	4,473
			Total of Project 2	650,000	0	650,000	645,527	4,473

## Summary of Financing Expenditure by Programme

Name of Ministry / Department / District Secretariat : District Secretariat, Puttalam

Expenditure Head No : 264

	Financing	Programme 01*		Programme 02*		Grand Total		Percentage of Expenditure *** (6÷5)X100
Code	Description of Items	Net Provision ** 1	Actual Expenditure 2	Net Provision ** 3	Actual Expenditure 4	Net Provision ** 5	Actual Expenditure 6	%
		Rs.	Rs.	Rs.	Rs.	Rs.	Rs.	
11	Domestic Fund	684,950,000	678,984,711			684,950,000	678,984,711	99
12	Foreign Loan							
13	Foreign Grant							
14	Reimbursable Foreign Loan							
15	Reimbursable Foreign Grant							
16	Counterpart Fund							
17	Foreign Finance related Domestic Cost							
21	Special law services							
	<b>Total</b>	684,950,000	678,984,711			684,950,000	678,984,711	99

## Financing of Expenditure by Projects of each Programme

(Financing of Capital and Recurrent Expenditure according to Projects of a Programme)

Name of Ministry / Department / District Secretariat : District Secretariat, Puttalam

Expenditure Head No : 273

Programme No. & Title : 1 Operational Activities

	Financing	Project 1		Project 2		Project 3		Programme Total/Page Total *	
Code	Description of Items	Net Provision	Actual Expenditure	Net Provision	Actual Expenditure	Net Provision	Actual Expenditure	Net Provision	Actual Expenditure
11	Domestic Fund	109,961,000	109,746,014	574,989,000	569,238,697			684,950,000	678,984,711
12	Foreign Loan								
13	Foreign Grant								
14	Reimbursable Foreign Loan								
15	Reimbursable Foreign Grant								
16	Counterpart Fund								
17	Foreign Finance related Domestic Cost								
21	Special law services								
	<b>Total</b>	109,961,000	109,746,014	574,989,000	569,238,697			684,950,000	678,984,711
12	Foreign Loan								

## Summary of Control Accounts for Advance & Deposit Accounts – 2015

Name of Ministry/Department: District Secretariat- Puttalam.

Expenditure Head:273

District Secretariat- Puttalam

Name of Advance / Deposit Account	As per Department Books					
	Account No. *	Opening Balance as at 01/01/2013	Debits during the year	Credits during the year	Balance as at 31/12/2015	Balance as per Treasury Books as at 31/12/2015
I Advances to Public Officers		Rs.	Rs.	Rs.	Rs.	Rs.
	273011	139,546,022.71	45,010,677.98	41,028,959.15	143,527,741.54	143,527,741.54
	273012		14,758,078.00	17,808,029.50	3,049,951.50	3,049,951.50
		139,546,022.71	59,768,755.98	58,836,988.65	140,477,790.04	140,477,790.04
II. Other Advances						
III Miscellaneous Advances						
IV Deposits						
(i) General Deposits	6000/0000/00/0001/0070/000	Bond Deposit	5,000.00	368,000.00	363,000.00	363,000.00
	6000/0000/00/0002/0095/000	Tender	0.00	272,000.00	272,000.00	272,000.00
	6000/0000/00/0013/0063/000	Temporarily withheld deposit for re-payment of 3 <sup>rd</sup> Party	10,887,197.19	61,773,588.39	50,886,391.20	50,886,391.20
	6000/0000/00/0016/0046/000	Withholding deposit for Contract	3,631,399.44	206,113,139.36	202,481,739.92	202,481,739.92
	6000/0000/00/0017/0016/000	Compensation	0.00	11,543,130.21	11,543,130.21	11,543,130.21
	6000/0000/00/00190009/000	Donation(National) Deposit	1,521,547.62	5,540,126.69	4,018,579.07	4,018,579.07
	6000/0000/00/0020/0003/000	Fund received to settlement of expenditure	1,263,254.00	2,191,242.95	927,988.95	927,988.95
	6003/0000/00/0049/0000/000		320,342,646.91	546,554,351.38	0.00	0.00
(ii) Other Deposits						