

Content

| | |
|---|----|
| Message of the Govt. Agent / District Secretary | 1 |
| 1. Introduction of the District Secretariat | 2 |
| 1.1 Vision and Mission | 2 |
| 1.2 Objectives of District Secretariat | 2 |
| 1.3 Function of District Secretariat | 3 |
| 2 Introduction of the District..... | 4 |
| 2.1 Boundaries of the district | 4 |
| 2.2 Historical importance of Matara district | 6 |
| 2.3 Natural Resources of Matara district | 6 |
| 2.4 Livelyhood methods and majot economic trade activities of people of the district | 9 |
| 2.5 Irrigation system of the district | 12 |
| 2.6 Population information of the district | 14 |
| 2.7 Rainfal petern of the district | 15 |
| 2.8 Basic Statistics information of the district | 16 |
| 3 Organizational Structure and Approved Cadre..... | 17 |
| 3.1 Organizational structure | 17 |
| 3.2 Details of the staff | 19 |
| 4 Performance | 21 |
| 4.1 Progress of General Administration Activities | 21 |
| 4.1.1 Activities of Grama Niladaries | 21 |
| 4.1.2 Duties of Internal Audit | 22 |
| 4.1.3 Consumer Affairs | 23 |
| 4.1.4 Revenue collection activities | 24 |
| 4.1.5 Human Resource Development and Career Guidance activities | 25 |
| 4.1.6 Productivity Promotion activities | 27 |
| 4.1.7 Media and Information activities | 28 |
| 4.1.8 Affairs of Explosive Division | 29 |
| 4.1.9 Registration of persons and lands | 30 |
| 4.1.10 Registration of Business Names in the District | 32 |
| 4.1.11 Disaster Management Activities | 33 |
| 4.1.12. Activities of Disaster Relief Service Center | 36 |
| 4.1.13. Activities of Environment Division | 38 |

| | |
|--|-----|
| 4.1.14. Activities of National Language | 40 |
| 4.1.15. Activities of Motor Traffic Division | 41 |
| 4.1.16. Activities of Measurement unit and Standard Division | 42 |
| 4.1.17. Details of pensioners | 43 |
| 4.2 Progress of Social Servicers and Cultural | 44 |
| 4.2.1 Cultural and Religious activities | 44 |
| 4.2.2 Early Childhood develooment activities | 48 |
| 4.2.3 Social Service activities | 49 |
| 4.2.4 Social Security Activities | 51 |
| 4.2.5 Counseling service activities | 51 |
| 4.2.6 District Sport Activities | 55 |
| 4.2.7 District Women affairs | 56 |
| 4.2.8 District Youth services affairs | 57 |
| 4.3 Progress of Development Activities | 58 |
| 4.3.1 Development projects carried out under expenditure head of District Secretariat | 58 |
| 4.3.2 Expenditure details of Line Ministries and Departments | 62 |
| 4.3.3 Development projects done under the Ministry of Economic Development | 66 |
| 4.3.4 Development of playgrounds | 69 |
| 4.3.5 Activities of Divineguma National Programme | 70 |
| 4.3.6 Progress of Small Enterprise Development Division | 78 |
| 4.3.7 Performance of District Agriculture Division | 84 |
| 4.3.8 National fertilizer Secretariat | 89 |
| 5 Annual Accounts | 90 |
| 5.1 Appropriation Account | 90 |
| 5.2 Public Officers Advance Account B | 99 |
| 5.3 General Deposit Account | 100 |

Message from District Secretary



As the guardian of the district, it is my responsibility to plan and implement policies needed for the development of Matara district and obtain utmost benefits through that process. I highly appreciate this opportunity in issuing a message for this report by which the standard of the service provided to the general public is measured and targets of service planning expected to be achieved in the year 2016.

State policies have featured that most of services provided by the government in order to upgrade the living standard of the low income families are provided and many development projects are carried out through District Secretariat and Divisional Secretariats. Public trust will be ensured by publishing details of performance of these activities and services and people contribution to the development process could be promoted.

According to the annual budget, in the process of utilizing financial resources allocated within the year 2015, performance of financial operations of District Secretariat, 16 Divisional Secretariats, 650 Grama Niladari divisions and line ministries are included in this report.

My sincere thanks due to Secretary to the Ministry of Home Affairs, Mr. Ranjith Weerasekara - Chief Accountant of District Secretariat, Mr. Sunil Jayasekara - Accountant of District Secretariat, Mrs. Vijitha Abeywickrama - Budget Assistant and all others in Account Division and District Secretariat who provided their assistance in preparing this report.

E.A.C. Widanagamachchi
District Secretary / Govt. Agent
Matara.
04.05.2016

Performance Report and Accounts of District Secretariat of Matara for the year 2015

1. Introduction to the District Secretariat

Matara District Secretariat which is an attractive administrative centre by the side of Nilwala river consists of 16 Divisional Secretariats and 650 Grama Niladari divisions.

1.1 Vision and Mision

Vision

To direct the district of Matara towards excellence through an efficient and effective service which brings satisfaction to the public.

Mission

To create a public friendly administrative mechanism and sustainable development in Matara district through strategic management of human, physical and financial resources in accordance with the Government policies.

1.2 Objectives

- ❖ Maintaining an efficient and effective District Administrative System.
- ❖ Securing Provision of efficient public service so that the satisfaction of general public could be increased.
- ❖ Establishing in public service a code of ethics consisting result orientation, attitudes, responsibilities, careful use of resources, impartiality, transparency etc.
- ❖ Implementing policies related to the human resources management in public sector
- ❖ Implementing schemes related to the policies on pension of public servants.

- ❖ Organizing Programmes and projects done by different Ministries, Departments Boards and Authorities operating in the district upgrading welfare and development of the people in the district acting as a co-coordinator in financial and non financial resources and follow up.
- ❖ Achieving different type of economic, social and cultural requirements of people living within the district through District Secretariat and 16 Divisional Secretariats.
- ❖ Acting as the government agent of the district collect and integrate the accurate, needy information at rural and divisional level and supply them to various Ministries , Departments and non government organizations in order to make correct decisions.
- ❖ Through District Secretariat and Divisional Secretariats collect due revenue of different government Departments and refer them to the treasury
- ❖ In case of sudden disasters such as floods, Cyclone, drought or tsunami supply quick relief and aid to people and rehabilitate their living condition.

1.3 Activities

- ❖ Acting as the head of the District Defense Committee secure the safety of the people living within the territory of the district.
- ❖ Acting as the head of organizing cultural , religious and other state functions in the district
- ❖ Implementation of decentralized budget, organization, implementation and supervision of development purposes in the district acting as the Secretary of District coordinating Committee and District Development Committee.
- ❖ Acting as the chief of divisional administrative purposes with 16 Divisional Secretaries and take measures in order to increase its efficiency.
- ❖ Using novel information technology and motivate the staff for that in order to increase the productivity and quality of administration purposes.
- ❖ As the deputy head of all ministries and Departments involve in Co-coordinating purposes so that objectives, aims and functions of such institutions are fulfilled.
- ❖ Take necessary measures to hold fair and impartial elections acting as the representative of the Commissioner of elections in elections of all types such as Presidential election, Parliamentary election, Provincial Council election and Local Government election.
- ❖ Take necessary measures needed for the motivation and capacity development of staff of District Secretariat as well as Divisional Secretariats.

- ❖ On behalf of Accounting Officers of various Ministries, Departments, Corporations and Boards to collect, accounting and transfer their revenue to the Treasury and making aware such Accounting Officers.
- ❖ In various disastrous situations like tsunami, droughts and floods, to organize, implement, supervise and follow up disaster management purposes acting as the agent of the government and take measures to restore lives of the affected.
- ❖ Develop assess management systems by supervising local and foreign funded projects.

2. Introduction to the District

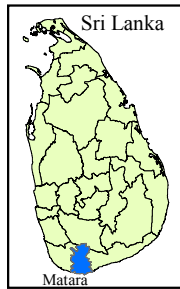
2.1. Boundaries of the Matara district

Matara district which is situated near Nilwala river close to sea is in between Galle and Hambantota districts in Ruhuna. It possesses an attractive land containing in extent 1282.5 Sq. km. or 128,250 hectare. Matara district falls in between 5.8 - 6.4 North Latitude and 80.4 - 80.7 East Longitude. Matara district has wet climate while it has a mean rainfall of 2553.2 ml. and temperature of 26.7.

1.96% of total land extent of Sri Lanka is belonged to our district and it is 23.14% of land extent belonged to southern province. The elevation from the coast up to Kukulugala is 3880 feet. The Sinharaja which has been a world heritage is consisted of attractive water falls.

Matara district is bounded on the South by attractive belt of sea, North by Divisional Secretariat divisions of Kolonna, Kalawana in Ratnapura district, West by Divisional Secretariat divisions of Habaraduwa, Imaduwa, Yakkalamulla, Thawalama, Neluwa in Galle district and East by Divisional Secretariat divisions of Okewela, Beliatte, Katuwana in Hambantota district.

Situation of Matara district



Source: Statistic Division, Matara

Map scale 1:300,000
0 1.252.5 5 7.5 10 Km

2.2 Historical importance of Matara District.

Matara district which has a long history up to Ravana period is situated touching Nilwala river. It is described in Sinhala Mahawansa as the city of aliens, Bengal of wealthy people and institute of intellectuals. It is very apparent that Matara city is the mother land of people those enriched with patriotism and religious honour.

The city firstly called “Mathota” later became “Mahathota”. Left sea belt of Nilwala river was called “Mathota” while right belt as “Mathotagama”. In the regime of Dambadeniya, Weeraba Mapanan - the then ruler of Matara constructed a massive wall and named as Mapapatuna. This is proved by appreciation of the beauty by the then poets. Author of Paravi Sandeshaya described it as “*Mapapatuna Dekka Yagan Noveepama*” The term “Bala Madathun Mothota Athale Nileyaya” describes that left sea belt of Nilwala river called as “Mathota” while right sea belt called as “Mathotagama”.

By archeological evidences it is proved that even before the arrival of Wijaya Prince Matara was an area where the power was under Naga tribe. Mutaseewa king who fled to Ruhuna at that period and prince Mahanama have been identified as the earliest Naga tribesmen. It is mentioned in Mahawansa that Naga tribes have lived in villages like Navimana, Nadugala, Naimbala, Naotunna and Narawelpita.

It is further mentioned that Kapparatota in Weligama area had been used by foreign people for anchoring their commercial ships and Agrabhodhi Vihara of Weligama had been built during the reign of king Devanam Piyatissa. Hathbodhi watte and Matara Bodhi which situated in Matara city were built in the reign of king Kumaradasa. According to above facts Matara has a proud history.

2.3 Natural Resources of Matara district.

When the situation of land of the district is considered, land extent of about 10% - 20% are hilly areas between 300 m - 750 m. Soil of the district is mostly a mixture of red and yellow. The main feature of this soil is moisture and fertile. The climate of the district is environment friendly. The annual mean rainfall is 2500 mm. while mean temperature amounts to 26.7 C.

Rivers, canals, lakes can be seen as water sources in the district and major source of water is Nilwala river. Polwatte river which falls into the sea at Polwathu river mouth covers a considerable catchment area. Hilly areas such as Kotapola, Pasgoda and Pitabaddara provide pure water. 6 major lakes and 7 anicuts in the district provide water for the agricultural purposes.

The highest contributing mineral to the national wealth in the district is gems. Metal could be mentioned as another mineral in the district.

The major item of natural resources in the district is considered as forests. Sinharaja forest situated in this district is a marvelous creation of the nature. Sinharaja forest which covers about 11,187 hectares within Galle, Matara and Hambantota districts was named in 1989 as a “world heritage”. The highest point of this forest is Heenatigala peak which records 1,170 m from sea level. The minimum height is 90 m. Sinharaja is most important as a catchment area. Gingaga and Kaluganga starts from Sinharaja mountain. In 2011 quantity of forest in Matara district is 21,203.1 hectare. Out of that, quantity of reserved forests amounts to 18,152 hectare. Extent of other forests is 3,051.1 hectare.

Another valuable natural resource we had is Indian ocean and coastal belt by which Sri Lanka is surrounded. Out of coastal belt long about 1600 km. 55 km is belonged to Matara district. We have bays, lagoons, sea marshy lands, wet lands and natural plants resources. Area of Divisional Secretariat of Weligama has sea bays while lagoons are situated in Devinuwara and Gandara areas. Mangrove can be mostly seen in Matara area while small quantities in areas of Divisional Secretariats of Devinuwara and Dickwella. Mangrove close to sea coast in Matara district extends in about 6 hectare. Kiralakele which is situated in the area of Divisional Secretariat of Matara is significant among them.

Kirala, Ketala and Kumbuk which are major components in mangrove plan system can be mostly seen here. In addition, waterborne plants like Mimosa pudica, love grass can be seen. Fruits such as Madan, Kirala, mango can also be seen. There are rare herbal plants needed for indigenous medicine in this system of environment.

When the bio diversity in Kiralakele is considered birds, reptiles, butterflies and fish can be seen. Different kind of birds can be seen covering about 68 species. One part of this area is considered as an area of butterflies. There are also different type of fish in the canal system with marshy lands.

Beautiful places situated in the areas of Divisional Secretary's Divisions of Matara district.

| Divisional Secretary's Division | Natural resources and their situation. |
|---------------------------------|--|
| Pitabaddara | Athuela Bridge – Nilella, Morawaka |
| Kotapola | Sinharaja forest |
| | Sathmahal Ella – Deniyaya |
| | Thiruwana Ganga Ella - Kotapola |
| Akuressa | Dediyagala Ella |
| Weligama | Stilt fishing |
| | Lovers park of Mirissa |
| | Rassa Munu Kuduwa |
| | Mahaneviya Pokuna |
| | Mirissa fishing harbor |
| | Giragala |
| Devinuwara | Light House |
| Thihagoda | Kiralakele Birds paradise |
| | Birds park of Meda Uyangoda |
| Pasgoda | Ilukthenna Aranya forest |
| | Mekiliyathenna Umandola |
| | Urubokka Oya |
| | Rammalekanda |
| | Biso Ella |
| Kamburupitiya | Lenabatuwa Lake |

Source : Statistic Division – Matara.

2.4 Livelihood of people and main commercial and economic activities.

History show that Matara district had a prosperous and self sufficient economy. At present the majority of land consumption is for estate plantation. Tea, one of major commercial crop is significant and related tea factories.

In addition, priority is given to tea plantation when considred the land use.

Land extents and harvest of permanent and semi permanent crops in the district - 2014

| Crop | Extent of land cultivated (Hectare) | | Harvest | |
|---------------|-------------------------------------|-----------------|---------|----------|
| | Harvestable | Non Harvestable | Unit | Quantity |
| Cinnamon | 6848 | 794 | kg | 5146822 |
| Coffee | 180 | 40 | kg | 178907 |
| Cocoa | - | - | kg | - |
| Pepper | 995 | 251 | kg | 1140075 |
| Cardamon | 53 | 10 | kg | 6500 |
| Cloves | 203 | 30 | kg | 243577 |
| Areconut | 923 | 325 | kg | 1123338 |
| Cashew | 149 | 43 | ‘000 | 10026 |
| Orange | 105 | 82 | No. | 1489770 |
| Lemon | 150 | 69 | No. | 2396299 |
| Mango | 953 | 317 | No. | 13377695 |
| Jak fruit | 2016 | 462 | No. | 19684515 |
| Breadfruit | 308 | 70 | No. | 4243350 |
| Sugar cane | - | - | No | - |
| Plantain | 1511 | 404 | ‘000 | 6019450 |
| Papow | 238 | 108 | No. | 1789279 |
| Fine apple | 95 | 79 | No. | 981470 |
| Passion fruit | 13 | 9 | No. | 1008000 |
| Betal leaves | 101 | 27 | ‘000 | 359741 |

Source : District Statistics Division - Matara

Sweasonal Crop cultivation in the district 2013/2014 Maha and 2014 Yala sesons.

| Crop | Extent of land cultivated (Hectare) | | Harvest (Metric tons) | |
|----------------|--|-----------|-----------------------|-----------|
| | 2013/14 Maha | 2014 Yala | 2013/14 Maha | 2014 Yala |
| Kurakkan | 5 | 3 | 8350 | 3400 |
| Wheat | 6 | 2 | 25700 | 1150 |
| Green gram | 4 | 22 | 2000 | 35875 |
| Manioc | 495 | 390 | 7883528 | 5910500 |
| Sweet potatoes | 171 | 129 | 1925665 | 1195287 |
| Raw chillies | 130 | 112 | 480195 | 634267 |
| Mustard | | 1 | | 440 |
| Raw ginger | 127 | 109 | 1888027 | 1128071 |
| Raw tammerin | 96 | 74 | 1633437 | 977448 |
| Luffa | | 75 | | 900700 |
| Ladies fingers | | 123 | | 1028990 |
| Brinjals | | 146 | | 1671300 |
| Bitter guard | | 70 | | 774320 |
| Snake guard | | 38 | | 367915 |
| Tomatoes | | 33 | | 224975 |
| Cucumber | | 10 | | 81050 |
| Rabbish | | 83 | | 1179810 |
| Beans | | 8 | | 56000 |
| Ash pumpkin | | 4 | | 12775 |
| Pumkin | | 18 | | 221150 |
| Ash plantain | | 191 | | 1852494 |
| Capcicum | | 40 | | 180508 |

Source : Seasonal crops - District Statistics Division - Matara

Paddy production in the Maha season in the years 2013/2014 is 13890 hectare and for the Yala season it is 11030 hectare and 24920 hectare were cultivated in 2014. Mean harvest for both of these seasons 3882 kg per 1 hectare and 3398 kg. per 1 hectare respectively. Accordingly, total production of paddy for the year 2014 is 72420 met. tons.



Matara district has recorded third place in tea plantation among main 08 districts. 13 divisional secretary divisions including 345 Grama Niladari divisions are covered by tea plantation in Matara district. Among estate plantation, tea plantation comes first acquiring land extent of 23176.85 hectares. This matter is proved by the minimum ratio between male and female, minimum unemployment and social background in the Divisional Secretariat division of Kotapola, Pasgoda, Mulatiyana,

Pitabaddara. The major livelihood of people living in the North has become tea cultivation using the subsidy. Since labour contribution given by tea small holdings brings a financial profit there is a trend among people for that.

Coconut plantation can be seen in coastal areas in the district where about 75% are belonged to small land owners. Comparatively, since initial capital and labour needed for coconut plantation are minimum rural people have entered this plantation. There is no increase of land in the district as coconut lands have been used for development activities and building houses. In addition, 12582 coconut trees were cut and removed in Matara district due to coconut leaf disease in Weligama area during the year 2015. It has adversely affected coconut plantation of Matara district.

Rubber plantation and related industries can also be seen in small quantities. Export crop cultivation too has extended through out the district and cinnamon cultivated land extent is about 5748.69 hectare. People living in Mulatiyana, Kamburupitiya, Hakmana, Pasgoda, Akuressa and Welipitiya have made use of cinnamon cultivation to strengthen their economy and significant entrepreneurs in Cinnamon exportation can be seen in Matara district. 30% of cinnamon cultivated lands of the island is in Matara district.

In addition, cultivation of pepper, coffee and areconnut can be seen. Cultivation of vegetable and fruits is being done as a home garden cultivation using traditional methods. In divisional secretariat areas of Welipitiya, Hakmana and Weligama vegetable cultivation is significant.

In Matara district agriculture based industries could be considered major. Among them tea industry is prominent. There are 104 tea factories in Matara district and it has contribution to the supply of employments.

There is no development in the domestic rubber industry and Lord Star rubber factory which was started in the industrial city produces tyre related to artificial rubber. Production of curd and yoghurts is done at small scale in the district while Lucky yoghurt company involves in the high scale production of milky food and distribution of liquid milk.

According to industrial statistics in 2003, number of industry unit employed less than 9 employees is 5033 while total employee amounted to 10455. There were 273 factories where more than 10 employees employed and total employees there were 10416. Accordingly total number of employees employed in these factories except domestic industries is 28871. 22.9% of the labour force of Matara district is employed in industrial division.

In 86 villages in 56 Grama Niladari divisions in Divisional Secretariat divisions of Dickwella, Devinuwara, Weligama and Matara, the percentage of people employed in fishing industry is 48% of total population of such areas. Annual fishery production of 2013 is 48255 M.T.

2.5 Irrigation system of the district.

When considered the irrigation system of Matara district, according to statistics of 2014 8 huge irrigation, 5 anicuts, 23 small irrigation lakes and 131 small anicuts could be seen.

Irrigation according to Divisional Secretariat divisions – 2014.

| Divisional Secretariat division | Large irrigation | | Minor irrigation | |
|---------------------------------|------------------|---------|------------------|---------|
| | Lakes | Anicuts | Lakes | Anicuts |
| Akuressa | 2 | | 1 | 33 |
| Athureliya | | | 3 | 2 |
| Devinuwara | | | | 2 |
| Dickwella | 1 | | 2 | |
| Hakmana | | 2 | 7 | 13 |
| Kamburupitiya | 1 | 2 | | 7 |
| Kirinda Puhulwella | | | | 8 |
| Kotapola | | | | 8 |
| Malimbada | | | 3 | 4 |
| Matara | | 1 | 2 | 4 |
| Mulatiyana | | | | 10 |
| Pasgoda | | | 1 | 10 |
| Pitabaddara | | | | 1 |
| Thihagoda | 4 | | | 8 |
| Weligama | | | 3 | 4 |
| Welipitiya | | | 1 | 17 |
| Matara district | 8 | 5 | 23 | 131 |

Source : District Irrigation Engineer's Office - Matara

According to details of District Irrigation Engineer's office, lane extent cultivated under lakes are 3719 hectares while number of farmers 3851. It is 6573 hectares and 6298 cultivators under the category of anicuts.

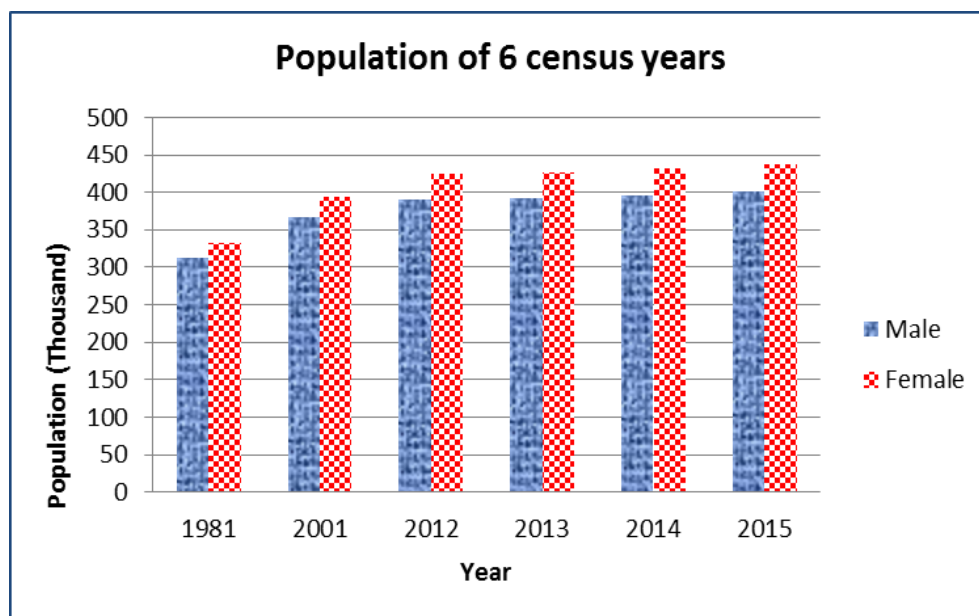
2.6 Population information of Matara district.

Male - female population details of 6 census years (1981-2015 by thousands) are mentioned in the following table. Accordingly female population has increased as a whole.

Population (Thousand)

| Census year | Total population | Male | | Female | |
|-------------|------------------|--------|------------|--------|------------|
| | | Number | Percentage | Number | Percentage |
| 1981 | 643.8 | 312.2 | 48.5 | 331.6 | 51.5 |
| 2001 | 761.4 | 367.7 | 48.3 | 393.7 | 51.7 |
| 2012 | 814.0 | 389.9 | 47.9 | 424.1 | 52.1 |
| 2013 | 819.0 | 393.0 | 48.0 | 426.0 | 52.0 |
| 2014 | 826.0 | 395.6 | 47.9 | 430.4 | 52.1 |
| 2015 | 837.0 | 400.9 | 47.9 | 436.1 | 52.1 |

Source : Dept. of Census and Statistics.



2.7 Pattern of rainfalls of the district

Monthly Rainfall 2014

Ranges of the rainfall in the Matara district are as follows.

| Month | Rainfall to Thelijjawila (ml) | Rainfall to Deniyaya (ml) |
|-----------------|----------------------------------|------------------------------|
| Annual rainfall | 213.7 | 309.5 |
| January | 70.9 | 280.7 |
| February | 35.2 | 60.5 |
| March | 41.6 | 281.1 |
| April | 77.6 | 468.2 |
| May | 184.4 | 241.1 |
| June | 452.5 | 294.5 |
| July | 57.2 | 109.8 |
| August | 238.7 | 188.5 |
| September | 376.8 | 357.2 |
| October | 583.5 | 629 |
| November | 231.3 | 268 |
| December | 215.2 | 535.4 |

Source : Agricultural Research Institute – Thelijjawila.

Tea Research Institute – Deniyaya.

Hilly areas like Pitabaddra, Kotapola and Pasgoda in Matara district has a wet weather with higher rainfall while coastal areas like Matara, Dickwella and Devinuwara has a dry weather. Rainfall in hilly areas is double as in coastal areas.

2.8 Basic information – Matara district.

| | |
|--|---------------------------------|
| ❖ District | : Matara |
| ❖ Province | : Southern |
| ❖ Total land extent | : 1282.5 Sq. km. |
| ❖ No. of Divisional Secretariat division | : 16 |
| ❖ No. of Grama Niladri division | : 650 |
| ❖ No, of villages | : 1658 |
| ❖ No. of Polling Districts | : 07 |
| ❖ No. of Municipal Councils | : 01 |
| ❖ No. of Urban Councils | : 01 |
| ❖ No. of Pradeshiya Sabhas | : 15 |
| ❖ No. of Circuit Bungalows | : 01 (Ministry of Home Affairs) |
| ❖ No. of Zonal Education office | : 04 |
| ❖ No. of schools | : 363 |
| ❖ No. of teachers | : 10465 |
| ❖ No. of Parliamentarians | : 10 |
| ❖ No, of Provincial Councilors | : 14 |
| ❖ No. of voters | : 634918 |
| ❖ Population | : 837000 |
| ❖ No. of houses | : 210937 |

3. Organizational chart and approved cadre.

3.1 Organizational chart

Operational programme is implemented under Head 262 so that responsibilities and functions could be properly performed in order to achieve objectives of District Secretariat. Two projects are carried out under that programme.

262 Operational programme

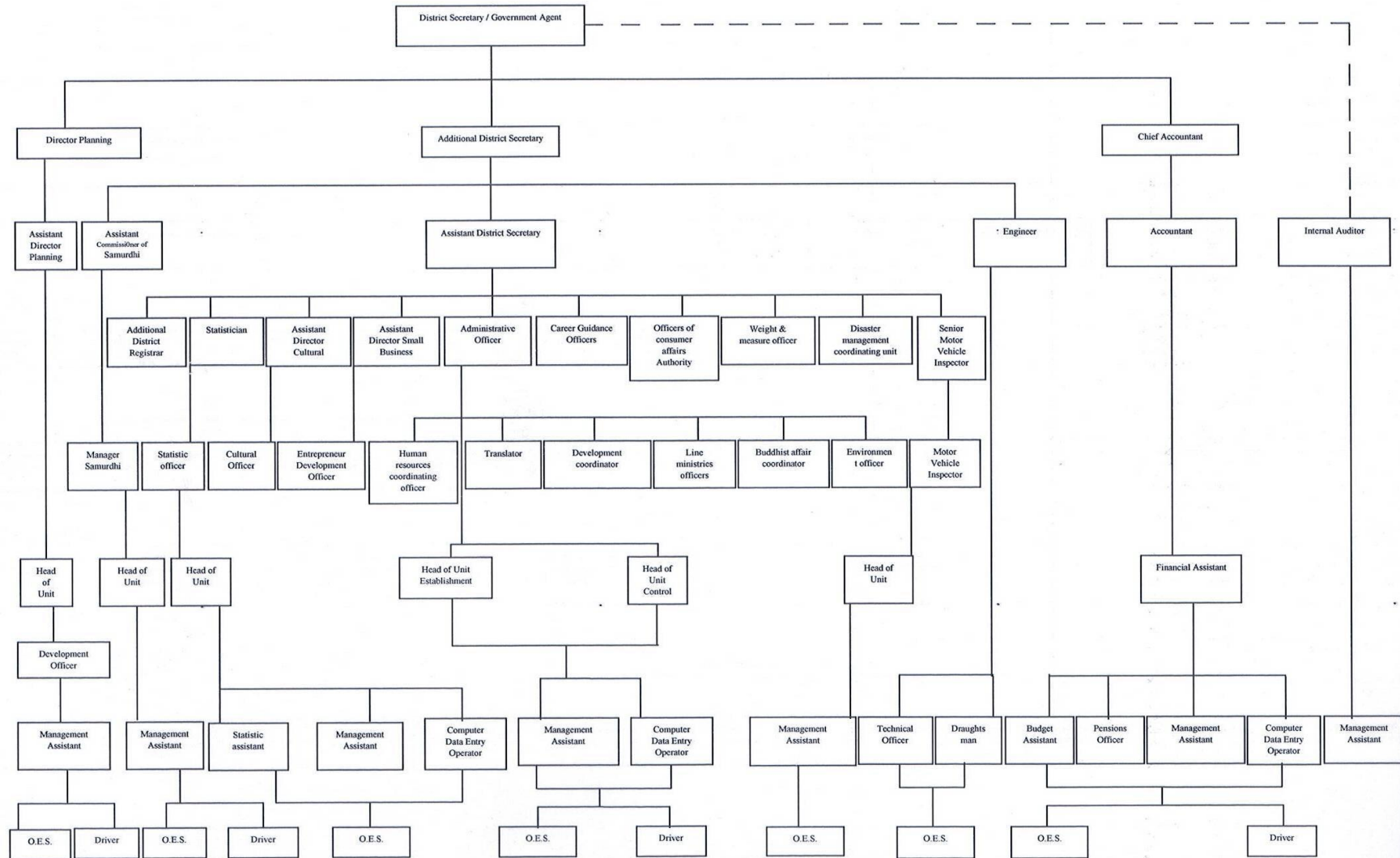
Project 1 – General Administration and Establishment services – District Secretariat.

Project 2 - Divisional Secretariats.

In designing organizational chart of District Secretariat under operational programme, not only staff coming under Head 262 but also officers of other Departments serving in District Secretariat have to be entered. Because all these divisions have been established at the premises of District Secretariat in order to provide economic, social and cultural services for the general public under one roof. District Secretary acts as the Head of such district Secretariats.

Example : Dept. of Statistics, Dept. Of Cultural affairs and Dept. of Motor Traffic etc.

Organizational Chart



3.2 Cadre Details

Following table shows the approved cadre, over staff and vacancies of District Secretariat of Matara and its 16 Divisional Secretariats as at 31.12.2015.

| Cadre Details - District Secretariat Matara | | | |
|---|-----------------------|--------------------------|-------------------------------|
| Posts | Service, Grade /Class | Number of Approved Cadre | Actual Cadre as at 31.12.2015 |
| Senior Level | | | |
| District Secretary | SLAS(Special) | 1 | 1 |
| Addl District Secretary | SLAS I | 2 | 1 |
| Asst. District Secretary | SLAS III | 1 | 1 |
| Chief Accountant | SLACS I | 1 | 1 |
| Internal Auditor | SLACS I | 1 | 1 |
| Accountant | SLACS I | 1 | 1 |
| Engineer | SLES I | 1 | 1 |
| Senior Level Total | | 8 | 7 |
| Tertiary Level | | | |
| Administrative Officer | PMAS(Supra) | 1 | 1 |
| Translator | TS | 1 | 2 |
| Tertiary Level Total | | 2 | 3 |
| Secondary Level | | | |
| Budget Assistant | AO | 2 | 2 |
| Development Co Coordinator | AO | 2 | 3 |
| Investigation Assistant | AO | 2 | 2 |
| Development Officer | | 16 | 28 |
| Public Management Assistant | PMAS I, II, III | 27 | 31 |
| Information Technology dev. Asst. | DEO | 2 | 3 |
| Technical Officer | SLTS II | 1 | 4 |
| Draughtsman | SLTS II | 1 | 1 |
| Secondary Level Total | | 53 | 74 |
| Primary Level | | | |
| Receptionist | | 1 | 1 |

| Driver | DMV I, II | 5 | 7 |
|---|-----------------------|--------------------------|-------------------------------|
| Office Employees Service | OES I, II, III | 9 | 10 |
| Casual Garden Labor | | 1 | - |
| Primary Level Total | | 16 | 18 |
| Full Total | | 77 | 102 |
| | | | |
| Cadre Details - Divisional Secretariats - Matara District | | | |
| Posts | Service, Grade /Class | Number of Approved Cadre | Actual Cadre as at 31.12.2015 |
| Senior Level | | | |
| Divisional Secretary | SLAS I, II | 16 | 16 |
| Asst. Divisional Secretary | SLAS II, III | 16 | 14 |
| Accountant | SLACS II, III | 16 | 15 |
| Senior Level Total | | 48 | 45 |
| Tertiary Level | | | |
| Administrative Officer | PMAS (Supra) | 16 | 12 |
| Grama Niladhari (Supra) | GR (Supra) | 14 | 5 |
| Translator | TS I | 2 | 2 |
| Tertiary Level Total | | 32 | 19 |
| Secondary Level | | | |
| Development Co-Ordinator | OA | 16 | 17 |
| Development Officer | OA | 80 | 279 |
| Public Management Assistant | PMAS I, II, III | 420 | 393 |
| Grama Niladhari | GN I, II | 650 | 616 |
| Information Technology dev. Asst. | DEO | 16 | 15 |
| Technical Officer | SLTS II, III | 14 | 27 |
| Translator | TS II, III | 2 | - |
| Draughtsman | SLTS II, III | 3 | 1 |
| Secondary Level Total | | 1201 | 1348 |
| Primary Level | | | |
| Receptionist | | 3 | 3 |
| Driver | DMV I, II, III | 31 | 31 |
| Office Employees Service | OES I, II, III | 97 | 97 |

| | | | |
|---|--|------|------|
| Primary Level Total | | 131 | 131 |
| Total (Senior+Tertiary+Secondary+Primary) | | 1412 | 1543 |
| Casual Labourer | | 1 | 1 |
| Substitute Labourer | | 2 | 1 |
| Substitute Watcher | | 2 | - |
| Total (Casual +Substitute) | | 5 | 2 |
| Full Total | | 1419 | 1545 |

4. Performance.

4.1 Progress of General Administrative activities

4.1.1 Activities of Grama Niladaries.

There are 650 Grama Niladari divisions in 16 Divisional Secretariat divisions in Matara district.

Performane details of them are as follows.

- ❖ Conducting annual Grama Niladari performance competitons organized with the aim of providing an effective serviceto the people.
- ❖ Janasahana accelerated services have been carried out at the level of selected divisiona of Grama Niladaries. (quick actions to uplift disabled families residing in Grama Niladari divisions, resolved land issues of the people, issuing National Identity Cards and purposes related to Births, Deaths and Marriages)
- ❖ Conducting various programmes in order to promote social and cultural activities in Grma Niladari divisions.
- ❖ Conducting Shramadana campaigns at division level making aware people at house hold unit level under Dengue combating program.
- ❖ Take maximum measures to achieve tax targets.
- ❖ Regularizing unauthorized lands and updating reports pertaining to unauthorized acquisitions.

- ❖ Training new Grama Niladaries.
- ❖ Present children of disables persons for the Art festival district competitions.
- ❖ Organized a pilgrimage to Munneshwaram by Dematahettigoda Grama Niladari Office of Thihagoda for members of senior citizens society free of charge.
- ❖ Construction of two new houses for a low income family and for a member of Youth Society in the Grama Niladari's Division of Akkara 50 Thihagoda and
- ❖ Construction of a house for a low income family in Grama Niladari's Division of Narawelpita South, Hakmana.
- ❖ Renovation of roads of eight Grama Niladari's Divisions in Thihagoda Divisional Secretariat through Sramadana.
- ❖ Held Shramadanas in 46 Divisions in Divisional Secretariat division of Akuressa on Southern Provincial Rural Development Day.

4.1.2 Internal Audit Duties.

According to Internal Audit Plan of the year 2015, internal audit inquiries had to be held in 13 Divisions of Divisional Secretariat 07 inquiries at District Secretariat. But due to the general election in 2015 only 10 audit inquiries could be held in Divisional Secretariats. 08 inquiries could be held in District Secretariat.

- ❖ According to the annual report paying vouchers of 16 Divisional Secretariats and District Secretariat were checked and such reports have been submitted for offices concerned.
- ❖ According to the annual report Audit and Management committees pertaining to 04 quarters in 2015 were held on due dates and submitted reports.
- ❖ Preparation of basic report pertaining to District Secretariat and Sixteen Divisional Secretariats.
- ❖ In addition to audit inquiry, special inquiry was held in Divisional Secretariat of Thihagoda.

4.1.3 Consumer Affairs.

Annual Performance pertaining to consumer affairs.

| Month | No. of raids. | Surcharge (Rs.) | Consumer relief complaints | Awareness programmes | | |
|-----------|---------------|-----------------|----------------------------|----------------------|-----------------|---------------|
| | | | | Students (No.) | Consumers (No.) | Traders (No.) |
| January | - | 43,000.00 | 09 | 02 | 04 | 04 |
| February | 72 | 102,000.00 | 05 | 03 | 04 | 01 |
| March | 114 | 350,000.00 | 10 | | 02 | 03 |
| April | 112 | 185,000.00 | 07 | | 02 | 01 |
| May | 57 | 378,000.00 | 12 | | 02 | 02 |
| June | 69 | 492,000.00 | 12 | 01 | 01 | 03 |
| July | 66 | 427,000.00 | 06 | | 04 | 01 |
| August | 59 | 357,500.00 | 02 | | 01 | 02 |
| September | 65 | 387,000.00 | 06 | | 05 | 01 |
| October | 66 | 434,000.00 | 06 | 01 | 02 | 02 |
| November | 74 | 205,500.00 | 15 | | 02 | 01 |
| December | 121 | 246,000.00 | 16 | 01 | 01 | 01 |
| Total | 875 | 3,607,000.00 | 106 | 08 | 30 | 22 |

4.1.4 Collection of revenue.

Revenue collected in the year 2015.

| Revenue Head | Description | Revenue collected (Rs.) |
|--------------|---|-------------------------|
| 1003.07.02 | Registration fees pertaining to Dept. of Registrar General | 21834110.00 |
| 1003.07.03 | Private timber transportation | 674401.70 |
| 1003.07.05 | Permit fees related to Defense Ministry | 206250.00 |
| 1003.07.99 | Permits – other | 4589657.74 |
| 2002.01.01 | Rents of Govt. buildings | 825449.73 |
| 2002.01.03 | Land and other rentals | |
| 2002.02.99 | Interest – other | 8294865.44 |
| 2003.02.07 | Obtaining Visa, passports and Dual citizenship | |
| 2003.02.13 | Exam. and other fees | 85560.36 |
| 2003.02.14 | Fees charged under Motor Traffic Act and other receipts | 44407190.00 |
| 2003.02.99 | Selling and fees - miscellaneous | 8700976.59 |
| 2003.03.00 | Surcharges and confiscations | |
| 2003.99.00 | Selling and fees - other receipts | 63949548.13 |
| 2003.04.00 | Providing motor cycles for Filed Officers | |
| 2004.01.00 | Social Conservation Contributing funds - Central Government | 37805751.58 |
| 2006.02.00 | Sale of capital assets | 900.00 |

4.1.5 Human Resources Development & Career Guidance Affairs.

Career Guidance Officers and Human Resources Development Assistants who are attached to District Secretariat and Divisional Secretariats are providing guidance and job placements in order to upgrade the socio economic condition of the people.

In parallel to the action plan, the target of Career Guidance Officer in conducting programmes is 319 in 2015. But they have completed 300 programmes.. Details of such programmes are mentioned below.

| Program | Annual target | | | Achieving targets. | | |
|--|---------------|---------------|-------------------|--------------------|---------------|-------------------|
| | Programs | Beneficiaries | Allocations (Rs.) | Programs | Beneficiaries | Expenditure (Rs.) |
| Winning career challenges | 02 | 60 | 15640.00 | 03 | 109 | 24640.00 |
| Motivating for self employments | 02 | 60 | 2390.00 | 02 | 60 | 2390.00 |
| Making teachers aware | 01 | 40 | 35000.00 | 01 | 40 | 35000.00 |
| Internal Graduate programme | 01 | 40 | 27750.00 | 01 | 40 | 27750.00 |
| O/L | 89 | - | - | 92 | 2331 | - |
| A/L | 72 | - | - | 68 | 1785 | - |
| Improving career performance | | 1220 | - | - | 876 | - |
| Providing career guidance services – Other | - | 2520 | - | - | 2691 | - |
| District Job fair | 01 | - | 265000.00 | - | 2004 | 236172.00 |
| Program after G.C.E. | 01 | - | 50000.00 | - | 365 | 41000.00 |
| Parents awareness programmes | 10 | - | 40000.00 | - | - | 40000.00 |
| Programme for the vulnerable people | 136 | - | - | - | 1805 | - |
| Job placements in the field of Tourism | 01 | 30 | 26850.00 | - | 30 | 26850.00 |

| | | | | | | |
|-------------------------------------|-----|------|-----------|-----|-------|----------|
| Job social programme | - | - | - | - | 73 | 65900.00 |
| Training programmes on requirements | - | - | - | - | 196 | 51790.00 |
| Programme of 100 jobs. | 01 | - | - | - | 639 | 94700.00 |
| Motivation for free jobs | 02 | 60 | - | - | 60 | 27420.00 |
| Total | 319 | 4030 | 462630.00 | 300 | 13104 | 673612 |

Services provided under Human Resources Development are as follows.

- ❖ Provide guidance for setting up goals, developing skills and positive attitudes
- ❖ Registration of job seekers
- ❖ To identify job vacancies, register job firms and make placements
- ❖ To hold district job market and organizing job society
- ❖ Referring for job opportunities through training and career guidance
- ❖ Referring for self employments

Duties performed by District Job Center in the year 2015.

| Programme | Target of 2015 | Extent of targets achieved in 2015 |
|--------------------------|----------------|------------------------------------|
| Registration for jobs | 1680 | 2109 |
| No. of job vacancies | 1440 | 1040 |
| No. of matching jobs | 1680 | 1575 |
| Reference for interviews | 1680 | 1812 |
| Placements | 480 | 428 |
| Job fair programmes | - | 07 |

According to above chart Human Resources Development Officers have been able to pass the target of conducting programmes in 2015 in parallel to the action plan.

4.1.6 Productivity Promotion purposes.

Productivity Development Assistant Officers attached to District secretariat and Divisional Secretariats have contributed to a greater extent to improve the productivity of the district in 2015. Accordingly, details of awareness programmes are as follows.

| Division | No. of programmes | | | | | | | | |
|----------------------------------|-----------------------|-------------|------------------------|---------------------|--------------|-----------------|-------|--------------------|--------|
| | Awareness programmes | | | | | | | Cont. observations | Audits |
| | Productivity concepts | 5 s concept | Quality circle concept | Green prod. concept | Kaizen porg. | Knowledge mang. | Other | | |
| Pre schools | 22 | 63 | - | 2 | - | 1 | 20 | 305 | 45 |
| Schools | 23 | 44 | 17 | 9 | 4 | 3 | 24 | 394 | 8 |
| Higher Edu. | 2 | 4 | 1 | - | - | 1 | 1 | 5 | - |
| Public sector | 24 | 37 | 31 | 1 | 1 | - | 41 | 360 | - |
| Private sector | 3 | 3 | - | 1 | - | - | 3 | 17 | - |
| Community sector | 35 | 57 | - | 5 | - | - | 17 | 276 | 112 |
| Institutions based on membership | 7 | 15 | - | 1 | - | - | 3 | 6 | - |
| Special projects (Kaizen) | 11 | 10 | - | - | 2 | 1 | - | 166 | - |
| Other | 12 | 12 | - | - | - | - | - | - | - |
| Total | 139 | 225 | 49 | 18 | 7 | 6 | 109 | 1629 | 165 |

In addition, special programmes have been conducted by Productivity Promotion Division. They are as follows.

- ❖ Held award festival in appreciation of introducing programmes of productivity concepts for Early Childhood Development Center “5s for the kids”.

- ❖ Cordination of institutions in Matara district for national productivity festival.
- ❖ Awareness and auditing of program “Dakshina Suwa Daruwo” conducted by Ministry of Health.
- ❖ Awareness and auditing Police productivity promotion program.
- ❖ Awareness and auditing of productive promotion programs of institutions under the Ministry of Justice.

4.1.7 Media and Information Affairs

District Media Unit of Government Information Department which is established in Matara District Secretariat plays a major role. Various measures have been taken to make general public aware of development activities in Matara district. Special attention is paid for development news which are not published in the media. State and private media personnels are made aware and necessary information are provided to them.

Details of Matara district are reported to www.news.lk which is the official web site of Democratic Socialist Republic of Sri Lanka and www.dgi.gov.lk - the website of Government Information Department.

Various type of seminars, conferences and workshops are conducted for mediamen with the intention of improving knowledge, attitudes and skills of regional media personnels of the district.

Media coordination is provided for varios programmes conducted in Matara diatrick by government and semi government institutions including ministries, departments, corporations and boards.

Detailed report pertaining to regional mediamen in the district has been prepared and maintained.

Accordingly 145 news announcements were issued to state and private mass media (including www.news.lk) pertaining to development projects implemented in Matara district in 2015.

Done 31 media coordinations referring regional media personnels for reporting functions, programmes and workshops held in Matara district by various ministries and departments.

In Presidential election and Parliamentary election held in 2015 coordination of regional media personnels in counting votes was done by District Media Unit.

4.1.8 Activities of Explosive Division.

Activities done by Explosive Division within a year.

- ❖ Explosive permits/ applications for permits were checked and recommend the quantity of explosive.
- ❖ Obtain the approval for explosive permits issued under prior covering approval and send related reports to the ministry.
- ❖ Issue relevant annual letter to provide quantity required for a month for authorized traders from NAVY/ State Trading General Corporation and authorized manufactures of explosives.
- ❖ Check stores of explosives and related documents..
- ❖ Follow up explosive management and preveny illegal activities..
- ❖ Issue of ex[plosive to explosive permit holders from store of explosive of Udukawa, Matara and supervision.
- ❖ Issue of fitness certificates for vehicles by which explosives are transported..
- ❖ Giving technical instructions to industrialists on use of explosive.
- ❖ Issue of rock mine permits / Participate in integrated inspection in issuing environment permits
- ❖ Hold quick inquiries regarding complaints on damages, environmental damages and nuisance to general public due to metal industry and inform the District Secretary / Govt. Agent such decisions.
- ❖ Take actions to destroy expired explosives.
- ❖ Issue bullets for fire arms.

Total revenue of Explosive division in the year 2015

| Type of permit | No. of permit | Fee (Rs.) | Surcharge (Rs.) | Revenue (Rs.) |
|------------------------------|---------------|-----------|-----------------|---------------|
| Fira arms | 384 | 100.00 | 100.00 | 56000.00 |
| Explosives (Commercial) | 113 | 250.00 | - | 28250.00 |
| For removing rocks in a land | 13 | 100.00 | - | 1300.00 |
| Crackers | 285 | 250.00 | 250.00 | 105250.00 |
| Import permits | 01 | 5000.00 | - | |
| Supply permits | 02 | 2000.00 | - | |
| Total Revenue | | | | 190800.00 |

4.1.9 Registration of persons and lands.

Details of registration of persons and lands of 16 Divisional Secretariats in Matara district in 2015 are given below.

| Description | Number |
|---|--------|
| No. of births registered within the year | 11138 |
| No. of marriages registered within the year | 7503 |
| No. of deaths registered within the year | 5265 |
| No. of deeds registered within the year | 119 |

Details of progress of various land duties of 16 Divisional Secretariats in Matara district are given below.

| Description | Number |
|--|--------|
| No. of permits granted under Lands development Ordinance | 4558 |
| No. of grants given | 385 |
| No. of long term lease given | 7 |
| No. of long term lease recommended for Land Commissioner | 84 |
| No. of community Deeds issued | - |
| No. of land Kachcheri held | 79 |
| No. of division days held | 76 |
| Total No. of allotments granted within the year | 217 |
| No. of land disputes solved | 1217 |
| No. of recommendations made for legitimating unauthorized | 6661 |
| No. of permits issued under that | 2383 |
| No. of measurement orders sent | 600 |
| No. of measurement descriptions received | 116 |
| No. of encroachers removed | 15 |
| No. of cases filed for obtaining possession back | 24 |
| No. of lands for which measures were taken to obtain possession back | 21 |

Progress of issue of identity cards of 16 Divisional Secretariats in Matara district are given below

| Description | Number |
|---|--------|
| No. of applications forwarded to Dept. of Registration of Persons | 20794 |
| No. of identity card issued to general public by Grama Niladaries | 6373 |
| No. of applications for identity cards forwarded to one day service | 5927 |

4.1.10. Registration of Business Names in the District.

| Divisional Secretary Division | No. of application for registration of Business Names | No. of applications registered | No. of application submitted but not furnished for obtaining permits | No. of Business Names applications amended | | | |
|-------------------------------|---|--------------------------------|--|---|-----------------------------|--|---------------------------------|
| | | | | No. Of applications received for amendments | No. of applications amended | No. of certified copies of Business Names issued | No. of Business names cancelled |
| Matara | 419 | 319 | 27 | 42 | 42 | 39 | 21 |
| Weligama | 311 | 260 | 51 | 30 | 20 | 7 | 20 |
| Kamburupitiya | 139 | 136 | 02 | 04 | 04 | 06 | 06 |
| Hakmana | 116 | 98 | 18 | 12 | 12 | 06 | 11 |
| Pasgoda | 128 | 102 | 26 | 10 | 10 | 04 | - |
| Kotapola | 71 | 70 | 01 | 14 | 14 | 04 | 03 |
| Malimbada | 125 | 113 | 12 | 07 | 07 | 01 | 16 |
| Akuressa | 133 | 107 | 26 | 17 | 17 | 12 | 06 |
| Dickwella | 134 | 128 | 18 | 12 | 12 | 06 | 11 |
| Thihagoda | 87 | 83 | 04 | 03 | 03 | 01 | 03 |
| Mulatiyana | 105 | 90 | 18 | 04 | 04 | 02 | 07 |
| Devinuwara | 210 | 170 | 40 | 13 | 13 | 03 | - |
| Welipitiya | 113 | 109 | 04 | 13 | 11 | 06 | 03 |
| Kirinda Puhulwella | 40 | 40 | - | 01 | 01 | 02 | 06 |
| Pitabaddara | 105 | 93 | 12 | 09 | 09 | 13 | 04 |
| Athuraliya | 71 | 53 | 06 | 06 | 06 | - | 06 |
| Total | 2307 | 1971 | 265 | 197 | 185 | 112 | 123 |

4.1.11 Disaster Management Activities

Disaster Management Unit has been established in District Secretariat with the aim of taking measures related to possible disasters in the district. Accordingly planning, implementation and supervision of disaster management activities are done by this unit.

Following are the major role and functions related to disaster management purposes in 2015.

| Programme Name | No. of programmes |
|--|-------------------|
| Rural Disaster preparedness plans | 08 |
| Floods rehearsal programmes | 02 |
| Tsunami rehearsal programmes | 06 |
| Fire extinguishing programmes | 01 |
| Awareness programmes | 07 |
| Reforming disaster management committees | 04 |

Rural Disaster preparedness plans.



Designing Rural Disaster Preparedness plan – Divisional Secretariat of Pasgoda - Grama Niladar Division of Thalapakanda.

Floods Rehearsal programmes



Floods rehearsal programme – Grama Niladar Division of Kokmaduea –
Divisional Secretariat of Welipitiya.

Tsunami Rehearsal Programme



Tsunami Rehearsal Programme – Grama Niladar Division of Bathiegama
Central – Divisional Secretariat of Dickwella.

Fire extinguishing programme



Training programme on fire extinguishing for students of Technical College of Talalla, Matara

Awareness programmes



Awareness of public servants on first aid and disaster management - Kirinda Puhulwella Divisional Secretary's Division/ District Secretariat Matara

Reformation of Disaster management



Reformation of disaster management committees -Mapalana Magin Ihala
Grama Niladari's Division – Kamburupitiya Divisional Secretary's Division

4.1.12 Activities of Disaster Relief Service Center

Needy allocations were made to all Divisional Secretariats for damages of houses in the district through Disaster Relief Service Center for damages occurred in the year 2014.

| Details of payments made in 2014 for house damages occurred in 2015. | | | | | | | | | | | |
|--|--------------------|-----------------------|-------------------------------|-------------------------------|-------------------------------|--|--------------------------|-------------------------------|-------------------------------|----------------------------------|------------|
| Serial No. | Div. Sec. Division | Totally damaged hoses | | | | | Partially damaged houses | | | | Total cost |
| | | No. of house damages | Allocation granted | | | | No. of house damages | Allocation granted | | | |
| | | | 1 st premium (Rs.) | 2 nd premium (Rs.) | 3 rd premium (Rs.) | Total sum for 1,2 and 3 premiums (Rs.) | | 1 st premium (Rs.) | 2 nd premium (Rs.) | Total sum for 1,2 premiums (Rs.) | |
| 1 | Weligama | 6 | 180000 | 300000 | 120000 | 600000 | 6 | 120000 | 50645 | 170645 | 770645 |
| 2 | Matara | 5 | 210000 | 250000 | 100000 | 560000 | 19 | 246500 | 90000 | 336500 | 843500 |
| 3 | Dickwella | 8 | 230000 | 400000 | 160000 | 790000 | 3 | 55000 | 15000 | 70000 | 860000 |
| 4 | Malimbada | 1 | 30000 | 50000 | 20000 | 100000 | 9 | 243565 | - | 243565 | 343565 |
| 5 | Welipitiya | - | - | - | - | - | 8 | 129000 | 54000 | 183000 | 183000 |
| 6 | Kotapola | 6 | 120000 | 300000 | 120000 | 540000 | 11 | 77000 | 136000 | 213000 | 753000 |
| 7 | Mulatiyana | 45 | 620000 | 1600000 | 700000 | 2920000 | 58 | 314000 | 1315000 | 1629000 | 4549000 |
| 8 | Devinuwara | 10 | 300000 | 500000 | 200000 | 1000000 | 11 | 109800 | 138200 | 248000 | 1248000 |
| 9 | Hakmana | 41 | 1230000 | 2000000 | 800000 | 4030000 | 16 | 600000 | 182500 | 782500 | 4812500 |
| 10 | Athuraliya | 7 | 180000 | 300000 | 120000 | 600000 | 12 | 500000 | 15000 | 515000 | 1115000 |
| 11 | Pasgoda | 31 | 300000 | 1100000 | 460000 | 1860000 | 1 | 12000 | - | 12000 | 1872000 |
| 12 | Pitabaddara | 6 | 120000 | 200000 | 100000 | 420000 | 5 | 79500 | - | 79500 | 499500 |
| 13 | Kirinda Puhulwella | 8 | 150000 | 400000 | 140000 | 690000 | - | - | - | - | 690000 |
| 14 | Thihagoda | 2 | - | 100000 | 40000 | 140000 | - | - | - | - | 140000 |
| 15 | Akuressa | 56 | 240000 | 400000 | 960000 | 1600000 | 6 | 80000 | 60000 | 140000 | 1740000 |
| 16 | Kamburupitiya | 2 | 60000 | 100000 | 40000 | 200000 | 2 | 20000 | 10000 | 30000 | 230000 |
| | Total | 234 | 3970000 | 8000000 | 4080000 | 16050000 | 167 | 2586365 | 2066345 | 4652710 | 20649710 |

Project of construction of houses that can face disasters

| Divisional Sec. Division / Name & Address of the beneficiary | Allocation granted (Rs.) | Expenditure as at 31.12.2015 (Rs.) | Projec progress | | | |
|---|--------------------------------|---|-----------------|--------------------|-------------------|--------------------|
| | | | Target | | Achieving targets | |
| | | | Physical | Financial (Rs.) | Physical | Financial (Rs.) |
| Div. Sec. Weligama. M.K. Premalatha, Mullewatta, Pathegama. | 500000 | 500000 | 100% | 500000 | 100% | 500000 |
| Div. Sec. Hakmana. T.A. Anusha Dilhani, 17B, Akuress Watta, Gammedapitiya, Hakmana. | 500000 | 500000 | 100% | 500000 | 100% | 500000 |
| Div. Sec. Kotapola. R.P. Sumith, No. 07, Nawa Gammana, Hingurupanagala, Kotapola North | 500000 | 500000 | 100% | 500000 | 100% | 500000 |

4.1.13 Activities of Environment Division

- ❖ Set up and maintaining District Committee according to the circular related to mining soil and gravel
- ❖ District Dengue Committee was successfully maintained, Dengue search operation was conducted with the premises of District Secretariat and progress reports on regional dengue management programmes were prepared.
- ❖ Coordination of school programs in 04 divisions of Div. secretariats in Matara zone of education, participation in programs and medal inspection by Central Environment Authority.
- ❖ Committee on District environmental laws was successfully maintained.
- ❖ Public complaints regarding environmental issues prevailing in the district inspected and reported on the instructions of District Secretary.

- ❖ Organizing and participation in beach cleaning programs at district and divisional level in relation to international beach cleaning day.
- ❖ Obtaining reports of regional environment committees and referring such matters for the attention of district environment committee.
- ❖ Setting up of tree planting district committees and organizing and participation in such tree planting programs.
- ❖ Setting up of District Wanadivi Mithuru committee and coordination of regional Wanadivi Mithuru committees.
- ❖ Conducting the meeting relating to waste management issues of Akuressa and make coordination for solving them.
- ❖ Participated in house to house awareness program on waste management.

Environment activities.

| Divisional Sec. Division | No. of awareness programs held. | No. of schools in which environment cadet groups | No. of schools in which environment children societies |
|--------------------------|---------------------------------|--|--|
| Matara | 15 | 14 | - |
| Weligama | 3 | 8 | - |
| Kamburupitiya | 73 | 12 | - |
| Hakmana | 24 | 14 | - |
| Pasgoda | 45 | 14 | - |
| Kotapola | 35 | 12 | - |
| Malimbada | 10 | 08 | - |
| Akuressa | - | - | - |
| Dickwella | 12 | 06 | - |
| Thihagoda | 08 | 08 | - |
| Mulatiyana | 35 | 08 | - |
| Devinuwara | 10 | 08 | 04 primary schools |
| Welipitiya | 12 | 05 | - |
| Kirinda | 04 | 06 | - |

| | | | |
|-------------|-----|-----|----|
| Puhulwella | | | |
| Pitabaddara | 16 | 5 | - |
| Athuraliya | 15 | 10 | - |
| Total | 317 | 138 | 04 |

4.1.14 Activities of National Languages Division.

| Programs held in 2015 | Venue |
|---|--|
| Held mobile service of issuing citizen identity cards under 100 days program | Arfa Vidyalaya, Weligama |
| Held exam. Of language association. | Minhath Vidyalaya, Dickwella St. Mary's Conbvent, Matara |
| Held 04 awareness rograms for school students on official language policy and social integrated frame work. | Auditorium of MR/ Godapitiya Central College Auditorium of MR/ Minhath Vidyalaya MR/ Arfa Vidyalaya, Weligama MR/ Vijitha Central College, Dickwella. |
| Held 03 scholarship seminars | Rohana Vidyalaya, Meddawatta, Matara Deniyaya Central College Primary School, Thudawa |
| Mobile service of issuing legal documents for persons who are not legally married. | Divisional Secretariat - Kotapola |
| Held 12 days program on giving Tamil language proficiency for students who face G.C.E.(A/L) examination in 2015 covering all Divisional Secretariats. | Auditorium of Matara District Secretariat |
| Held 03 Tamil language training programmes for Government officers. | Auditorium of Thohagoda Divisional Secretariat Auditorium of Devinuwara Divisional Secretariat Auditorium of Welipitiya Divisional Secretariat |
| Lets build a bridge for language – language home garden | St. Mary's Convent - Matara |
| Held art competition among school children based on religious co existence | Division of Athuraliya Divisional Secretariat |
| Held one day social integrated program for school children who are parentless or has one parent | Auditorium of Mulatiyana Divisional Secretariat |
| Donation of equipments worth Rs. 50000.00 for 03 schools in Thihagoda Divisional Secretariat. | Kapuduea Junior school Angunna Badulla Junior school Uggoda Junior school |
| Make arts on outer walls of school building using children in 05 selected in the division for | Kapuduwa Junior school Yatiana Maha Vidyalaya |

| | |
|---|---|
| social integration and national peace. | Thihagoda Primary School Kithalagama East Vidyalaya Naimbala Junior school |
| Project of giving safe book cupboard and books for Dimuthumuthu Rural Children library. | Grama Niladar division of 321 A, Ullala East, Divisional Secretary's division of Kamburupitiya. |
| Public participation program at community level (Community water project) | Hulandawa Estate |
| Held program of increasing inter religious integration | Auditorium of Matara Divisional Secretariat |
| Held various functions Festival of abandon Ramazan Fast Tamil literature and Tamil day festival Christmas Carol festival | Auditoriums of Matara and Weligama Div. secretariats Model Primary school of Matara Auditorium of Matara Divisional Secretariat |
| Out door language library | Model Primary school of Matara |
| Tamil Youth exchange program through School for life Sinhala | Church of Suwasahanaya – Weligama. |

4.1.15 Motor vehicles activities.

| Registration of new motor cycles, riving licences, motor cycle and vehicle trial - 2015 | Number |
|---|--------|
| Registration of new motor cycles - year 2015. | |
| 1. Motor cycles registered | 267 |
| 2. Certificate registration book | 01 |
| 3. Vehicle identity card | 01 |
| 4. Number plates | 8730 |
| Driving licences | |
| 1. Applications received for Driving licences | 10526 |
| 2. Number called for the trail | 15477 |
| 3. Issuing new driving licences | 9897 |
| 4. Extensions | 2849 |
| 5. Renewals | 2244 |
| 6. Photocopies | 263 |
| Taking over of motor cycles - 2015 | |

| | |
|---|------|
| 1. No. of taking over applications received | 43 |
| 2. Taking over done | 43 |
| Vehicle tests done by Motor Traffic Inspector | |
| 1. No. of vehicle accidents inspected | 540 |
| 2. No. of vehicles inspected | 1084 |

4.1.16 Measurement units and standar services

| Serial No. | Description | No. |
|-----------------------|---|----------------|
| Verification purposes | | |
| 1 | No. of traders who got verificated | 7896 |
| 2 | No. of weight and measurement equipments verification sealed | 56350 |
| 3 | Income of Verification seal | Rs. 6693813.62 |
| Filing cases | | |
| 1 | No. of cases filed pertaining to traders for using weight and measurement equipments which are not verificated. | 21 |
| I | No. of cases completed | 21 |
| II | fines | Rs. 22000.00 |
| 2 | No of cases filed for producing and selling less weight braed | 7 |
| I | No. of cases completes | 7 |
| II | fines | 8500.00 |
| 3 | Total No. of cases complered | 28 |
| I | fines | Rs. 30500.00 |

4.1.17. Pensioners information.

Category of Pension payments and No. of Pensioners in Matara district in 2015.

| Divisonal Secretariat | Payment by Dept. of Pensions through branches of banks. | | Payments through post offices. | | Payment in imprest (Rural Regional Banks and deductions) | | Categorization of pentioners | | | | | | | Total |
|-----------------------|---|---------------|--------------------------------|---------------|--|---------------|------------------------------|-------------|------|------------|--------|----------|-------|-------|
| | No. of Pensioner | Ammount (Rs.) | No. of Pensioner | Ammount (Rs.) | No. of Pensioner | Ammount (Rs.) | Civil | Civil widow | Army | Army widow | Orphan | Disabled | Other | |
| Matara | 5852 | 1618514222.04 | 378 | 109490295.30 | - | - | 4360 | 1205 | 515 | 66 | 16 | 46 | 22 | 6230 |
| Weligama | 2216 | 612667871.64 | - | - | - | - | 1414 | 450 | 148 | 43 | 9 | 17 | 135 | 2216 |
| Kamburupitiya | 1342 | 201492398.60 | 54 | 14935689.72 | - | - | 901 | 283 | 130 | 18 | 4 | 12 | 48 | 1396 |
| Hakmana | 883 | 252172473.00 | 12 | 3028478.52 | - | - | 564 | 160 | 84 | 10 | 7 | 2 | 68 | 895 |
| Pasgoda | 596 | 96066473.94 | 14 | 23761907.50 | - | - | 335 | 83 | 161 | 16 | - | - | 15 | 610 |
| Kotapola | 681 | 14930981.88 | 29 | 546623.00 | - | - | 390 | 120 | 54 | 17 | 2 | 4 | 123 | 710 |
| Malimbada | 1350 | 309642686.16 | 32 | 17722667.93 | 5 | 3155931.57 | 896 | 216 | 111 | 23 | 93 | 5 | 43 | 1387 |
| Akuressa | 829 | 206063161.40 | 84 | 19114968.50 | 6 | 1384687.47 | 566 | 144 | 60 | 14 | 3 | - | 132 | 919 |
| Dickwella | 429 | 105230530.80 | 1245 | 541895232.72 | - | - | 972 | 354 | 196 | 113 | 6 | 18 | 15 | 1674 |
| Thihagoda | 1244 | 350297279.64 | 119 | 26879186.52 | - | - | 854 | 243 | 217 | 17 | 5 | 9 | 18 | 1363 |
| Mulatiyana | 830 | 181539296.72 | 21 | 23017209.81 | 12 | 17124038.45 | 531 | 137 | 74 | 111 | 1 | - | 9 | 863 |
| Devinuwara | 1212 | 328099044.00 | 195 | 46675044.00 | 11 | 343775.64 | 901 | 282 | 148 | 18 | 2 | 17 | 50 | 1418 |
| Welipitiya | 1152 | 327882974.64 | 49 | 11931376.68 | - | - | 713 | 236 | 116 | 25 | 6 | 11 | 94 | 1201 |
| Kirinda | 653 | 145206911.80 | 35 | 15478703.13 | 24 | 1995871.85 | 434 | 129 | 48 | 10 | 1 | 6 | 84 | 712 |
| Pitabaddara | 597 | 117089183.05 | 11 | 20904255.24 | - | - | 356 | 95 | 41 | 11 | 3 | 11 | 91 | 608 |
| Athureliya | 521 | 133924500.00 | 97 | 21237851.99 | 17 | 1846657.64 | 382 | 121 | 43 | 7 | - | 1 | 81 | 635 |
| Total | 20387 | 5000819989.31 | 2375 | 896619490.56 | 75 | 25850962.62 | 14569 | 4258 | 2146 | 519 | 158 | 159 | 1028 | 22837 |

4.2 Social Services and Cultural Progress.

4.2.1 Cultural and religious activities

Cultural activities

| | |
|-------------------------------------|-----|
| Cultural details of Matara district | |
| No. of Art institutes registered | 102 |
| No. of cultural centers | 15 |

Payments made for Art institutes and artists

| Office | Payments made for Art institutes | | Payments made for law income artists | |
|---------------|----------------------------------|-------------------|--------------------------------------|-------------------|
| | No. of Art institutes | Amount paid (Rs.) | No. of Artists | Amount paid (Rs.) |
| Matara | 8 | 42,500.00 | 25 | 120,000.00 |
| Weligama | 4 | 21,000.00 | 5 | 25,000.00 |
| Kamburupitiya | 2 | 12,500.00 | 15 | 75,000.00 |
| Hakmana | 5 | 24,500.00 | 18 | 90,000.00 |
| Pasgoda | 4 | 22,500.00 | 5 | 20,000.00 |
| Kotapola | 9 | 47,500.00 | 2 | 10,000.00 |
| Malimbada | 5 | 27,500.00 | 4 | 20,000.00 |
| Akuressa | 4 | 17,000.00 | 6 | 30,000.00 |
| Dikwella | 6 | 31,000.00 | 1 | 5,000.00 |
| Thihagoda | 4 | 22,500.00 | 10 | 50,000.00 |
| Mulatiyana | 2 | 12,000.00 | 1 | 5,000.00 |
| Devinuwara | 11 | 57,500.00 | 5 | 25,000.00 |
| Welipitiya | - | - | 9 | 45,000.00 |
| Kirinda | 2 | 12,500.00 | 6 | 12,500.00 |
| Puhulwella | | | | |
| Pitabeddara | 3 | 17,500.00 | 10 | 50,000.00 |
| Athuraliya | 6 | 31,000.00 | 2 | 10,000.00 |
| Total | 75 | 399,000.00 | 124 | 592,500.00 |

| Important cultural places of the district |
|---|
| <ul style="list-style-type: none"> • DEvinuwara Vishnu Devala • Weligama Kushta Rajagala • Evinuwara light house • Weherahena Poorvarama Rajamaha Vihara • Elamaldeniya Rajamaha Vihara • Getabaru Rajamaha Vihara • Kotikagoda Rajamaha Vihara • Wewrukannala Rajamaha Vihara • Watagedara Pothgulmalu Vihara • Athkanda Rajamaha Vihara • Godapitiya Rajamaha Vihara • Hittetiya Rajamaha Vihara • Prthmaga Rajamaha Vihara • Polwatte Gangarama Vihara • Minikirula Rajamaha Vihara • 103 – highest mile post of Sri Lanka • Godapitiya Mohedeen Muslim Mosque • Star fort - Matara • Residence of Gajaman Nona |

Festival and programmes organized with the participation of District Secretariat of Matara

| Name of the festival/ progra | Date held | Amount spent |
|--|----------------|---------------|
| Duruthu Perahara of Thalpavila Jinajothikarama | 2015.01.04 | - |
| Independence day festival | 2015.02.04 | - |
| Coordination of examination of national Art institutes | 2015.03.29 | රු. 43 050.00 |
| Organizing district new year festival | 2015.04.22 | රු. 75 000.00 |
| Organizing district Vesak festival | 2015.05.04- 06 | - |

| | | |
|--|--------------------------|--------------|
| Annual perahara of Walgama Bodhirukkarama | 2015.05.04 | - |
| Vesak Maha Pinkama of Wewrukannala Buduraja Mahavehera | 2015.05.04 - 12 | - |
| Exhibition of sacred relics of Lord Buddha brought from Myanmar | 2015.05.19 - 21 | - |
| PExhibition of sacred relics of Mihindu Thero - Devinuwara | 2015.05.28 | - |
| Poson Perahara of Matara Thotamuna Rajamaha Vihara | 2015.06.06 | |
| Annual Esala festival of Devinuwara Vishnu Devala | 2015.07.25 – 31 | |
| Awareness program for cultural officers on collecting falk language | 2015.09.08 | |
| Holding district literary competitions | 2015.09.09 | |
| Festival of chuch of our lady | 2015.09.10 - 13 | |
| 151 st commemoration program of Sir. Anagarika Dharmapala | 2015.09.15 | |
| Binara Maha Perahara of Manthinda Pirivena | 2015.09.27 2015.12.24 | |
| Organizing monthly Dhamma desana for for officers | Monthly | |
| Coordination of committee meeting of Matara district branch of National Association of writers | Monthly | |
| Awareness workshop on process of writing and launching a child book | 2015.07.18 | |
| Held District literary festival Creative children generation – sae environment | 2015.11.19 | ₨. 88 000.00 |
| Hada Keta Bitha – Launching district creations | 2015.11.01 | |

Religious activities

Buddhist Affairs division of District Secretariat has been taking measures to have a religious encouragement in whole country by protecting identity of Buddhism and consistence of other religions. Accordingly role performed in 2015 is mentioned below.

- ❖ Pahan Sithata Daham Sisilak Sil meditation program – Dasamaha Bodhi temple of Akuressa.
- ❖ Holding Damma school examinations 1-5 and printing question papers from grade 1 to 5 and sending to Damma schools.
- ❖ Holding Damma school teachers examinations.
- ❖ Inspection of Damma school teasher – student summary report and preparing district report.
- ❖ Recruiting students for Damma university diploma and starting course..
- ❖ Organizing regional students skills activities and holding evaluation of district student skills – Nilwala college of education, Akuressa.
- ❖ Holding of prefect training at Dankoluwa Sri Dumindarama of Pitabaddara and alms giving at Kotikagoda Rajamaha Vihara in commemoration of birth day of Sir, Anagarika Dharmapala.
- ❖ Participation of Dhamma School students in evaluation activities of whole island Dhamma school students skills (National Education College of Psdunrata and D.S. Senanayaka Vidyalaya of Ampara)
- ❖ Holding Es.ay competition on Wariyapola Sri Sumangala
- ❖ Organizng and holding residential workshop on training rural leaders on drug prevention at Agricultural Training Center of Thelijjawila
- ❖ Holding a Vesak show of Songs of devotion jointly organized by Dept. of Budhist Affairs and District Secretariat.

4.2.2 Early Childhood Development purposes

Aim of this division is to take necessary measures for the development, protection and whole development of children aged between 0-5 years living in Matara district. Accordingly, role played by District Secretariat and 16 Divisional Secretariats is as follows in the year 2015.

- ❖ Implemented the programme of providing a fresh glass of milk for children in early childhood in 84 pre schools in all 16 Divisional Secretariats. Beneficiary number of families is 1849. It cost Rs. 2,314,241.00 for the year 2015.

Programs done in 2015 at the level of Divisional Secretariats in the field of early childhood development.

| Programme description | No. of programmes | Expenditure born by ministry allocation (Rs.) |
|---|-------------------------|---|
| “Senehe Thatake” Awareness programmes | 16 | 94,645.00 |
| “Poshana manpetha” Programme on child nutrition | 16 | 158,069.00 |
| “Nena Deepani” pre school teacher training programmes | 16 | 159,752.00 |
| Programmes of commemoration of universal children’s day | 16 | 200,236.50 |
| Setting up of rural committees of early childhood development | 25 | 24,125.00 |
| Easthetic programmes of childrens of early childhood | 16 | 239,950.00 |
| Early Childhood Jathika Saviya programs | 28 | 224,500.00 |
| International day of the girl | 01 | 20,000.00 |
| Making payment of Lamadiriya pre school teachers allowance | - | 725,500.00 |
| Training program for Early Childhood Development Officers of Southern Province. | 01 | 116,666.00 |
| Holding District Children Development committees | 05 | 9,830.00 |
| Donation of pre school educational equipments | Set of equipments 10 | |

4.2.3 Social Service activities

Special social task achieved in 2015 was to uplift disabled persons, use them for the development of the country and obtain their contribution for the development process.

- ❖ Implementation of community based disable rehabilitation program.
- ❖ Conduct medical clinics for disabled persons in Matara district.
- ❖ Set up parents organizations
- ❖ Conduct self help committee
- ❖ Empowering disable person and secure their rights
- ❖ Provide self employment aid, tools and conducting awareness programmes
- ❖ Conduct monthly job market at Divisional Secretariats in order to sell products made by disabled self employees
- ❖ Conducting awareness programmes for parents of disabled persons. And awareness programs for public officers
- ❖ Provide academic aid for disabled children and provide academic equipments through the educational helping project named “Sisunena deepani”.
- ❖ Referring disabled persons for vocational trainings
- ❖ Holding job markets and making private firms aware with the intention of increasing life standard of disable youths and their family members.
- ❖ Provide living aid for disabled persons
- ❖ Provide housing aid for disabled persons
- ❖ Rehabilitation program of single parent families.
- ❖ Conducting self employment training workshops for disabled persons through Vidatha centers
- ❖ Evaluation of self strength organizations of disabled persons.
- ❖ Appreciation of organizations that have jobs for disabled persons.
- ❖ Holding sports meet for disabled persons and awarding them medals and certificates.
- ❖ Conducive persons during new year festivals and songs of devotion for
- ❖ Holding a walk and cultural show on the day of disabled persons.
- ❖ A training center was set up by Self strength organization of disabled persons of Dickwella to provide computer knowledge and training for disabled students who have been selected for university.

Social services activities of the district – Year 2015

| Division of Div. Sec. | Public allowane | | Casual allowance | | Cancer allowance | | Thelasimea | | Community based reha. project | |
|--------------------------|-----------------|---------------------|---------------------|---------------------|------------------|---------------------|------------|---------------------|-------------------------------------|---------------------|
| | No. | Amount paid (Rs) | No. | Amount paid (Rs) | No. | Amount paid (Rs) | No. | Amount paid (Rs) | No. | Amount paid (Rs) |
| Matara | 649 | 2068950 | 3 | 16000 | 77 | 460650 | 1 | 700 | 1 | 15000 |
| Weligama | 860 | 2898300 | 3 | 10500 | - | 435100 | - | - | 3 | 150000 |
| Kamburupitiya | 496 | 1742100 | 10 | 71900 | 63 | 352050 | 2 | 16800 | 2 | 5000 |
| Hakmana | 324 | 1187550 | 21 | 143500 | 41 | 228800 | 1 | 11200 | 4 | 24200 |
| Pasgoda | 574 | 164950 | 22 | 375000 | 65 | 31900 | 2 | 285000 | 5 | 60000 |
| Kotapola | 489 | 1666700 | 10 | 117000 | 54 | 272250 | 2 | 14700 | - | - |
| Malimbada | 437 | 1506750 | 10 | 90000 | 63 | 356650 | 4 | 28800 | 92 | 276000 |
| Akuressa | 657 | 186750 | 27 | 617000 | 63 | 30600 | 1 | 700 | 1 | 20000 |
| Dikwella | 506 | 1654360 | 12 | 119000 | 67 | 453600 | 1 | 1500 | 5 | 60000 |
| Thihagoda | 8068 | 2254950 | 15 | 263250 | 545 | 272450 | - | - | 2 | 13200 |
| Mulatiyana | 890 | 3528150 | 14 | 3430000 | 74 | 421200 | 5 | 43400 | 3 | 95000 |
| Devinuwara | 13288 | 3768850 | 55 | 599600 | 677 | 328100 | 24 | 13200 | 103 | 3681000 |
| Welipitiya | 445 | 1430950 | 6 | 39000 | 78 | 440500 | 1 | 750 | 6 | 90000 |
| Kirinda Puhulwella | 252 | 267750 | 11 | 193000 | 31 | 166350 | - | - | 1 | 20000 |
| Pitabeddara | 326 | 1082500 | 3 | 3000 | 32 | 186450 | 1 | 8400 | 3 | 5000 |
| Athuraliya | 845 | 2726200 | 18 | 213000 | 44 | 222950 | 1 | 3500 | 5 | 100000 |
| Total | 29106 | 28135760 | 240 | 6300750 | 1974 | 4659600 | 46 | 428650 | 236 | 4614400 |

4.2.4. Social Security activities

Aim of this scheme is to secure financial security of employees who are not paid pension and involve in improper jobs when they become senior citizens. This reduces expenditure of social welfare by giving them a pension after 60 years. Accordingly details of Social security pension scheme in 2015 are as follows.

| Social security pension scheme | No. of persons | Cost (Rs.) |
|--------------------------------|----------------|------------|
| Enrollements | 987 | - |
| Payments of pension | 579 | 6987561.50 |
| Payments of death disabilities | 15 | 6524380.62 |

4.2.5 Counseling service activities.

Summarized details of counseling activities done within 2015 by Counselling Assistant Officers attached under ministry of Social empowerment and Welfare are as follows.

| Program | No. of programs | No. of beneficiaries | Contribution (Ministry) |
|---|-----------------|----------------------|-------------------------|
| Awareness program for Divisional Secretaries to make popular psychological counseling among public officers. | 01 | 30 | 16,000.00 |
| Parents awareness program through psychological counseling on child development. | 08 | 960 | 148,800.00 |
| Displaying a banner with the theme of counseling day at district and divisional level in relation to National counseling service day. | 09 | - | 18,000.00 |
| Implementing programs in relation to | 09 | 950 | 88,000.00 |

| | | | |
|--------------------------------------|-----|-------|------------|
| National counseling service day. | | | |
| Awareness programs | 128 | 7557 | |
| Prevention programs | 09 | 243 | |
| Personal development programs | 04 | 159 | |
| Capacity Development programs | 04 | 115 | |
| Providing personnel council services | - | 760 | |
| Total | 172 | 10774 | 270,800.00 |

counseling activities

Summarized details of counseling activities done within 2015 by Counselling Assistant Officers attached under ministry of Women and child Affairs are as follows.

| Program | No. of programs | No. of beneficiaries | Contribution (Ministry) |
|---|-----------------|----------------------|-------------------------|
| “House full of happiness and without conflicts” – pre marriage counseling awareness program for youths who hope to marry. | 03 | 137 | |
| “Lets make losses a blessing for the life” – Strenthening disabled community through counseling. | 09 | 528 | |
| Psychological counseling to spend pension life happily – Awareness program for adults | 33 | 1171 | |
| Counselling program of psychologically strengthening widows | 02 | 47 | |
| How a child with strong personality is awarded to the society Counselling to make awre pregnant mothers | 03 | 191 | |
| School counseling mobile service program | 01 | 140 | |
| The way of how to behave parents and teachers in dealing with children with disabilities. | 02 | 65 | |
| Importance of psychological counseling for abused children – community awareness program. | 01 | 73 | |
| “The way of bringing up children may decide their personality” – Parents awareness | 10 | 412 | |
| “Lets minimize stress in career life” – Awareness program for officers | 23 | 2251 | 235,650.00 |
| Awareness program for care takers of mental patients | 01 | 12 | |

| | | | |
|--|-----|-------|------------|
| Teenage, issues of teenage and counselling | 12 | 584 | |
| Awareness program on mental health | 06 | 477 | |
| Drug prevention programs | 05 | 248 | |
| Students awareness program on misuse of internet | 01 | 100 | 24,550.00 |
| Attitude development programs | 11 | 735 | |
| Personality development programs | 05 | 330 | 9,250.00 |
| Women awareness programs | 49 | 2015 | |
| Psychological counseling mobile services | 14 | 220 | |
| Awareness of community on counselling | 27 | 1459 | 15,000.00 |
| Awareness on role of parents when bringing up children | 21 | 1129 | |
| Awareness on child care and counselling | 01 | 155 | |
| Awareness program for children, Damma school children on counseling. | 22 | 2431 | |
| Counselling programs for pre school teachers | 03 | 150 | |
| Counselling programs for making aware families separated | 02 | 200 | 30,275.00 |
| Counselling programs of minimizing committing suicide | 01 | 100 | |
| Awareness programs for those who refer to community refie | 03 | 57 | |
| Counselling program of awareness for Children Societies | 15 | 543 | |
| Program of training counselling Assistant Officers | 02 | 15 | 26,100.00 |
| Giving school equipments for parentless students with financial difficulties | 01 | 600 | 150,000.00 |
| Total | 346 | 15116 | 490,825.00 |

4.2.6 Sport activities of the district.

| Divisional Secretary's division | No. of sport clubs registered | No. of active sport clubs | No. of sport clubs to which sportive equipments distributed | No. of sport clubs held | Amount allocated for each activity (Rs.) | | |
|---------------------------------|-------------------------------|---------------------------|---|--|--|---------------------|-----------|
| | | | | | Govt. | Provincial councils | Other |
| Matara | 52 | 36 | 36 | 15 | 25000.00 | 25000.00 | - |
| Weligama | 48 | 28 | 14 | 02 | 25000.00 | 38000.00 | 30000.00 |
| Kamburupitiya | 40 | 40 | 10 | 20 | - | 40000.00 | - |
| Hakmana | 34 | 25 | 18 | 12 | - | - | - |
| Pasgoda | 50 | 50 | 50 | 01 | - | 25000.00 | 15000.00 |
| Kotapola | 30 | 23 | 15 | 01 | 25000.00 | 25000.00 | - |
| Malimbada | 29 | 19 | 19 | 06 | - | - | 50000.00 |
| Akuressa | 30 | 22 | 13 | 9 | 15000.00 | 25000.00 | - |
| Dikwella | 23 | 21 | 32 | 01 | 25000.00 | 25000.00 | - |
| Thihagoda | 50 | 21 | - | 12 | 20000.00 | 20000.00 | 15000.00 |
| Mulatiyana | 36 | 34 | 05 | 01 | 25000.00 | 25000.00 | - |
| Devinuwara | 38 | 38 | 38 | 01 | - | 40000.00 | - |
| Welipitiya | 29 | 19 | 16 | 2 | 25000.00 | 6000.00 | - |
| Kirinda | 28 | 26 | 18 | 05 | 25000.00 | 40400.00 | - |
| Puhulwella | | | | | | | |
| Pitabeddara | 37 | 33 | 32 | 01 | 50000.00 | 25000.00 | 25000.00 |
| Athuraliya | 28 | 28 | 22 | 2015 Divisional sport meet 2015 | - | - | - |
| Total | 582 | 463 | 338 | 89 | 260000.00 | 359400.00 | 135000.00 |

4.2.7 Women Affairs of the district – Year 2015

| Divisional Secretary's division | No. of women societies registered | No. of awareness programs held | Loan given (Rs.) |
|---------------------------------|-----------------------------------|--------------------------------|------------------|
| Matara | 54 | 15 | 300000 |
| Weligama | 33 | 12 | - |
| Kamburupitiya | 39 | 32 | 20000 |
| Hakmana | 30 | 12 | 95000 |
| Pasgoda | 39 | 29 | 260000 |
| Kotapola | 32 | 17 | 165000 |
| Malimbada | 20 | 10 | 180000 |
| Akuressa | 34 | 35 | 42500 |
| Dikwella | 32 | 12 | 95000 |
| Thihagoda | 40 | 38 | 326000 |
| Mulatiyana | 49 | 14 | - |
| Devinuwara | 32 | 14 | - |
| Welipitiya | 36 | 8 | 70000 |
| Kirinda Puhulwella | 25 | 38 | - |
| Pitabeddara | 35 | 11 | 350000 |
| Athuraliya | 25 | 12 | 115000 |
| Total | 555 | 309 | 2018500 |

4.2.8 Youth services activities of the district.

| Div. Secretary's division | Youth services activities | | |
|---------------------------|--|---------------------------------------|----------------------------------|
| | No. of youth societies within the division | No, of youth society officers trained | Amount spent for trainings (Rs.) |
| Matara | 65 | 46 | 20000.00 |
| Weligama | 47 | 200 | 250000.00 |
| Kamburupitiya | 37 | 460 | - |
| Hakmana | 35 | 22 | 25000.00 |
| Pasgoda | 43 | - | - |
| Kotapola | 37 | 200 | 500000.00 |
| Malimbada | 29 | 500 | 10000.00 |
| Akuressa | 48 | 265 | 100000.00 |
| Dikwella | 39 | 60 | 20000.00 |
| Thihagoda | 04 | 50 | 50000.00 |
| Mulatiyana | 41 | 60 | 20000.00 |
| Devinuwara | 44 | 110 | 215000.00 |
| Welipitiya | 38 | 45 | 21000.00 |
| Kirinda Puhulwella | 31 | 150 | 100000.00 |
| Pitabeddara | 42 | 51 | 37000.00 |
| Athuraliya | 31 | 386 | 292940.00 |
| Total | 611 | 2605 | 1660940.00 |

4.3 Progress of Development Activities.

4.3.1 Development projects done under the object code of District Secretariat.

Capital assets rehabilitation and Improvement (Buildings and constructions)

Details of Capital assets rehabilitation and Improvement under object code 262 (Buildings and constructions) are as follows.

| Description of Expenditure | | Allocation | Expenditure |
|---|--|------------|-------------------|
| District Secretariat Matara | | | |
| Buildings and Construction | | 9630000.00 | |
| District Secretariat Matara | | | |
| | Repair of residency of Asst. District Secretary | | 692926.41 |
| | Repair of Govt. quarters No. 3 | | 1157851.94 |
| | Sub Total | | 1850778.35 |
| Divisional Secretariat Matara | | | |
| | Purchase of 10 iron racks for Registrar's Division | | 395000.00 |
| | Making grill gates of lower floor of the office. | | 223534.00 |
| | Sub Total | | 618534.00 |
| Divisional Secretariat Weligama | | | |
| | Painting of wall of office | | 111420.00 |
| | Repair of watchroom of the office | | 48443.13 |
| | Making roof near main entrance door | | 105301.35 |
| | Sub Total | | 265164.48 |
| Divisional Secretariat Kamburupitiya | | | |
| | Fixing grills of office buildings | | 611037.79 |
| | Making wire fence around the office | | 258128.66 |
| | Preparing office toilet system | | 127563.70 |
| | For access road of the office | | 95735.02 |
| | Sub Total | | 1092465.17 |
| Divisional Secretariat Pasgoda | | | |
| | Repair toilet system of staff officers | | 554945.26 |
| | Sub Total | | 554945.26 |

| | | | |
|--|--|--|-------------------|
| | Divisional Secretariat Kotapola | | |
| | Fixing name boards of the office | | 72000.00 |
| | Construction of retaining wall of the office | | 9019.36 |
| | Fixing electric fans of the auditorium | | 18980.64 |
| | Construction of the cycle garage | | 12404.67 |
| | Sub Total | | 112404.67 |
| | Divisional Secretariat Malimbada | | |
| | Construction of toilet annexed to office room of Asst. Div. Secretary | | 173649.24 |
| | Construction of toilet annexed to office room of Accountant | | 179319.24 |
| | For new electric supply of the office | | 55000.00 |
| | Covering stair case to the upper floor | | 33250.00 |
| | Repair of ladies toilet of the upper floor | | 25466.98 |
| | Covering stair case to the upper floor of the development division | | 9700.00 |
| | Repair of door of the toilet annexed to Office of Divisional Secretary | | 17300.00 |
| | For office garage | | 118742.35 |
| | Repair of ladies and gents toilets of the upper floor | | 46818.19 |
| | Sub Total | | 659246.00 |
| | Divisional Secretariat Akuressa | | |
| | Rpair of bathroom of Divisional Secretariat | | 137068.46 |
| | Making cycle garage of the office | | 479726.43 |
| | Widening store room of the office | | 93253.47 |
| | Repairing retaining wall of the office | | 110129.24 |
| | Making drainage system for rain water | | 87254.82 |
| | Parttitioning of canteen of the office | | 91362.61 |
| | Painting office building | | 65002.00 |
| | Sub Total | | 1063797.03 |
| | Divisional Secretariat Dickwella | | |
| | Fixing covering roof of the watchroom | | 14400.00 |
| | Tiling auditorium of Divisional Secretariat | | 176254.20 |
| | Making drainage system of the office | | 226960.37 |

| | | | |
|--|--|--|-------------------|
| | Fixing roof of the main building of the office | | 15789.00 |
| | Repair of ladies toilet of Divisional Secretariat | | 60661.29 |
| | Constructing a stage for fixing flag posts of the office | | 46117.03 |
| | Fixing flag posts of the office | | 45000.00 |
| | Repair of residence of Divisional Secretary | | 230512.66 |
| | Interlicking the front space of the office | | 123456.00 |
| | Sub Total | | 939150.55 |
| Divisional Secretariat Mulatiyana | | | |
| | Partitioning account branch | | 50000.00 |
| | Sub Total | | 50000.00 |
| Divisional Secretariat Devinuwara | | | |
| | Repair roof of the uuper florrof the office | | 42829.93 |
| | Repair of doors and windows of the office | | 8094.36 |
| | Inspection of intercom system for mainteance | | 2886.00 |
| | Painting office | | 605810.42 |
| | Repairing toilet system of the office | | 41519.77 |
| | Sub Total | | 701140.48 |
| Divisional Secretariat Welipitiya | | | |
| | Cnstruction of vehicle yard | | 454983.85 |
| | Sub Total | | 454983.85 |
| Divisional Secretariat Kirinda Puhulwella | | | |
| | For office curtains | | 257500.00 |
| | Reoair of rof of Div.Sec. | | 145045.00 |
| | For 03 flag poats | | 34500.00 |
| | For repair of canteen | | 91027.70 |
| | For garage | | 361644.17 |
| | Painting office | | 74200.00 |
| | Repair of office toilets | | 45000.00 |
| | Sub Total | | 1008916.87 |
| Divisional Secretariat Pitabeddara | | | |
| | Fixing latis for ait cages of auditorium | | 36271.00 |
| | Sub Total | | 36271.00 |

| | | | |
|-------------------|--|--|-------------------|
| | Divisional Secretariat Athuraliya | | |
| | Setting up of generator room | | 166666.84 |
| | Repair of drains of the office | | 18333.16 |
| | Sub Total | | 185000.00 |
| Full Total | | | 9592797.71 |

Acquisition of capital assets (Building and Construction)

Details of Acquisition of capital assets (Building and Construction) under head 262 are as follows.

| Description of Expenditure | | Allocation | Expenditure |
|--|---|-------------|--------------------|
| District Secretariat Matara | | | |
| Buildings and Construction | | 57000000.00 | |
| District Secretariat Matara | | | |
| | Construction of Divisional Secretariat of Matara | | 7071595.12 |
| | Construction of Divisional Secretariat of Athuraliya of Matara | | 8567851.28 |
| | Construction of Divisional Secretariat of Mulatiyana | | 17857823.83 |
| | Construction of Identity office of Divisional Secretariat of Devinuwara | | 1874708.53 |
| | Construction of Divisional Secretariat of Dickwella | | 4008541.38 |
| | Construction of dining facilities of District Secretariat of Matara | | 842961.29 |
| | Construction of a room for the use of cleaners | | 210478.73 |
| | Construction of auditorium of District secretariat | | 1866479.61 |
| | Construction of building of District Secretariat of Matara | | 1681754.31 |
| | Sub Total | | 43982194.08 |
| Divisional Secretariat Matara | | | |
| | Laying electric wires for air conditioners | | 752649.49 |
| | | | |
| | Sub Total | | 752649.49 |
| Divisional Secretariat Athuraliya | | | |
| | Partitioning of new two storied building | | 951377.33 |
| | Sub Total | | 951377.33 |
| Full Total | | | 45686220.90 |

4.3.2 Expenditure details of Line Ministries and Departments.

| Expenditure details of Line Ministries and Departments | | | | | | | |
|--|---|----------------|------------------|----------------|-----------------|----------------------|---------------------------|
| Head | Ministry / Department | Recurrent | | Capital | | Total | |
| | | Provisions Rs. | Expenditure Rs.. | Provisions Rs. | Expenditure Rs. | Total Provisions Rs. | Total Net Expenditure Rs. |
| 1 | Presidential Secretariat | - | - | 340000.00 | 304356.10 | 340000.00 | 304356.10 |
| 101 | Ministry of Buddhasana and Religious | - | - | 17216541.99 | 10864957.81 | 17216541.99 | 10864957.81 |
| 102 | Ministry of Finance and Planning | 11042644.09 | 10942336.62 | - | - | 11042644.09 | 10942336.62 |
| 104 | Ministry of polica making, children, youth and economic | 365610747.05 | 317592103.56 | 163399.55 | 151910.29 | 365774146.60 | 317744013.85 |
| 105 | Ministry of Economic Development | 27598540.00 | 27245169.28 | 200000000.00 | 193029094.68 | 227598540.00 | 220274263.96 |
| 106 | Ministry of Disaster Management | 9479726.49 | 9491332.54 | 22202710.00 | 22148710.00 | 31682436.49 | 31640042.54 |
| 110 | Ministry of Justice | 9545260.00 | 9207322.50 | - | - | 9545260.00 | 9207322.50 |
| 111 | Ministry of Health and indigenous medine | 505184.00 | 504934.00 | 90000.00 | 42993.00 | 595184.00 | 547927.00 |
| 112 | Ministry of foreign affairs | - | - | 2096700.00 | 2096700.00 | 2096700.00 | 2096700.00 |
| 114 | Ministry of Transport | - | - | 25814858.87 | 7965896.99 | 25814858.87 | 7965896.99 |
| 116 | Ministry of Co-operative anf inter trades | 7473273.60 | 7323260.77 | - | - | 7473273.60 | 7323260.77 |

| | | | | | | | |
|------------|--|--------------|--------------|---------------|--------------|---------------|--------------|
| 117 | Ministry of Port and highways | | | 450000.00 | 431814.28 | 450000.00 | 431814.28 |
| 118 | Ministry of Agriculture | 25929891.44 | 25763255.90 | 7123950.00 | 5269008.45 | 33053841.44 | 31032264.35 |
| 120 | Ministry of Child Development and Women Affairs | 119542572.37 | 55130818.16 | 3911549.57 | 3887976.96 | 123454121.94 | 59018795.12 |
| 121 | Ministry of Public Admin. & Home Affairs | 35856212.00 | 34307368.01 | 1200540467.93 | 817075248.95 | 1236396679.93 | 851382616.96 |
| 123 | Ministry of Housing and Samurdhi | - | - | 703390000.00 | 605924371.07 | 703390000.00 | 605924371.07 |
| 124 | Ministry of Social Services | 445260136.19 | 445260136.19 | 2611458.35 | 2611458.35 | 447871594.54 | 447871594.54 |
| 130 | Ministry of Provincial Councils and Local Government | 15841535.73 | 15696489.42 | 1605557.00 | 1358432.64 | 17447092.73 | 17054922.06 |
| 135 | Ministry of Plantation | - | - | 26720716.50 | 26144869.33 | 26720716.50 | 26144869.33 |
| 136 | Ministry of Sports | - | - | 6982164.85 | 5489610.80 | 6982164.85 | 5489610.80 |
| 140 | Ministry of upcountry new Villages intrsa structure facilities and Community Development | - | - | 500000.00 | 249006.91 | 500000.00 | 249006.91 |
| 149 | Ministry of Industries and Commerce | - | - | 2902883.61 | 2902883.61 | 2902883.61 | 2902883.61 |
| 151 | Ministry of Fisheries and Acquatic Resources | - | - | 3511429.86 | 1954712.15 | 3511429.86 | 1954712.15 |

| | | | | | | | |
|------------|---|-------------|-------------|--------------|--------------|--------------|--------------|
| 153 | Ministry of Lands and Land Development | 15557829.47 | 14291096.88 | 165888367.05 | 165507928.27 | 181446196.52 | 179799025.15 |
| 155 | Ministry of Provincial Councils and Local Government | 162500.00 | 162418.00 | - | - | 162500.00 | 162418.00 |
| 157 | Ministry of National Dialogue | 658306.27 | 506579.25 | 538838.00 | 685206.34 | 1197144.27 | 1191785.59 |
| 163 | Dept. of Registration of Persons | - | - | 280490.22 | 99140.72 | 280490.22 | 99140.72 |
| 177 | Ministry of Cultural and Art Affairs | - | - | 858296.00 | - | 858296.00 | - |
| 181 | Ministry of Productivity development | 2183888.00 | 1860103.73 | - | - | 2183888.00 | 1860103.73 |
| 182 | Ministry of Foreign Employment and Welfare | 22445300.00 | 21742739.63 | 65500.00 | 64715.00 | 22510800.00 | 21807454.63 |
| 194 | Ministry of Telecommunication and Digital Infrastructure facilities | - | - | 234288.77 | 216094.77 | 234288.77 | 216094.77 |
| 196 | Ministry of Science technology and Research | 638955.27 | 536215.06 | 2043117.16 | 2029394.74 | 2682072.43 | 2565609.80 |
| 197 | Ministry of Skill Development and Vocational Training | 71333.71 | 71333.71 | - | - | 71333.71 | 71333.71 |
| 201 | Dept. of Buddhist Affairs | 12703151.00 | 11003804.16 | 4507600.00 | 4142360.06 | 17210751.00 | 15146164.22 |
| 206 | Dept. of Cultural | 342910.00 | 334178.00 | - | - | 342910.00 | 334178.00 |

| | | | | | | | |
|------------|---|--------------|-------------|------------|------------|--------------|-------------|
| | Affairs | | | | | | |
| 210 | Dept. of Government Information | 8000.00 | 8000.00 | - | - | 8000.00 | 8000.00 |
| 216 | Dept. of Social Services | 11876461.17 | 11835779.41 | 930000.00 | 917911.75 | 12806461.17 | 12753691.16 |
| 217 | Dept. of Probation and Child protection | 12194405.00 | 12040405.10 | - | - | 12194405.00 | 12040405.10 |
| 227 | Dept. of Registration of Persons | 13331203.00 | 13259585.06 | - | - | 13331203.00 | 13259585.06 |
| 252 | Dept. of Census and Statistics | 1508036.85 | 1185500.88 | 1199822.40 | 1074256.10 | 2707859.25 | 2259756.98 |
| 253 | Dept. of Pensions | 209989978.00 | 76767424.62 | - | - | 209989978.00 | 76767424.62 |
| 254 | Dept. of Registrar General | 2166554.39 | 2059719.82 | - | - | 2166554.39 | 2059719.82 |
| 285 | Dept. of Agriculture | - | - | 138427.68 | 131579.68 | 138427.68 | 131579.68 |
| 286 | Dept. of Land Commissioner | - | - | 896930.00 | 866209.80 | 896930.00 | 866209.80 |
| 289 | Dept. of Export Agriculture | - | - | 915825.00 | 867187.26 | 915825.00 | 867187.26 |
| 307 | Dept. of Motor Traffic | 565000.00 | 435427.65 | - | - | 565000.00 | 435427.65 |
| 326 | Dept. of Community Base Prevention | 320000.00 | 270269.02 | - | - | 320000.00 | 270269.02 |
| 327 | Dept. of Land Use and Policy Planning | 554000.00 | 553754.00 | 1445852.00 | 1372590.32 | 1999852.00 | 1926344.32 |
| 328 | Dept. of manpower and Employments | 854533.00 | 847682.60 | 1879858.17 | 1749524.30 | 2734391.17 | 2597206.90 |
| 401 | State Ministry of Cultural Affairs | - | - | 4354328.00 | 4128620.09 | 4354328.00 | 4128620.09 |
| 402 | State Ministry of Yirsouth Af | 183011.64 | 143011.64 | 913100.45 | 913100.45 | 1096112.09 | 1056112.09 |

| | | | | | | | |
|------------|--|-------------|-------------|------------|------------|-------------|-------------|
| 403 | State Ministry of Children Affairs | 80819368.44 | 57248691.69 | 763863.00 | 590528.00 | 81583231.44 | 57839219.69 |
| 408 | Ministry of highways higher Education and Investment Promotion | 2404267.24 | 2293830.90 | 1983599.60 | 1440082.15 | 4387866.84 | 3733913.05 |

4.3.3 Development projects done under ministry of Economic development within the year 2015.

Development Programmes

Gamaneguma

Progress of Gamaneguma Programme as at 31.12.2015 is as follows

Gamaneguma Programme - 2015 (2014 continuation)

Physical and financial progress as at 31.12.2015

| Serial No. | Sector | No. of projects approved | Estimated amount Rs. m. | Amount allocated | Physical progress | | | | | | | Expenditure Rs. m | No. of beneficiaries |
|--------------|-------------------|--------------------------|-------------------------|------------------|-------------------|--------|----------|----------|---------|---------|-----------|-------------------|----------------------|
| | | | | | A | B | C | D | E | F | G | | |
| | | | | | 0% | 01-10% | 11% -25% | 26% -50% | 51%-75% | 76%-99% | Completed | | |
| 1 | Roads | 29 | 18.79 | 19.09 | | | | | | | 29 | 18.95 | 8593 |
| 2 | Minor irrigation | 3 | 2.86 | 2.87 | | | | | | | 3 | 2.53 | 255 |
| 3 | Buildings | 17 | 41.84 | 42.77 | | | | | | 2 | 15 | 26.28 | 6530 |
| 4 | Water supply | 3 | 1.37 | 1.37 | | | | | | | 3 | 1.34 | 1055 |
| 5 | Maternity Clinics | 4 | 3.17 | 3.2 | | | | | | | 4 | 3.18 | 1250 |
| 6 | Other | 3 | 2.85 | 2.88 | | | | | | | 3 | 2.77 | 45275 |
| Total | | 59 | 70.88 | 72.18 | | | | | | 2 | 57 | 55.05 | |

A-work not started (0%), B- (1-10%) - estimates prepared , C- (11-25%) -Programmes, D - (26-50%)-Programmes E -(51-75%)-Programmes, F - (76-99%)-Programmes, G -100%- Programmes.

Gamaneguma Programme - 2015 (Bills in hand)

Physical and financial progress as at 31.12.2015

| Sector | No. of projects | Estimated amount Rs, m | Allocation Rs. m | Physical progress | | | | | | | Expenditure Rs. m | No. of beneficiaries |
|------------------------------|-----------------|------------------------|------------------|-------------------|---------|----------|---------|--------|--------|-------------|-------------------|----------------------|
| | | | | A | B | C | D | E | F | G Completed | | |
| | | | | 0% | 1 - 10% | 11 - 25% | 26-50 % | 51-75% | 76-99% | | | |
| Roads, bridges, culverts | 66 | 29.91 | 31.01 | | | | | | | 66 | 23.02 | 15347 |
| Water supply | 11 | 1.92 | 1.92 | | | | | | | 11 | 1.57 | 823 |
| Health/Sanitation facilities | 6 | 9.06 | 9.71 | | | | | | | 6 | 5.51 | 2621 |
| Irrigation | 12 | 7.28 | 7.93 | | | | | | | 12 | 5.07 | 544 |
| Social welfare | 10 | 7.32 | 8.41 | | | | | | | 10 | 4.43 | 5940 |
| Total | 105 | 55.49 | 58.98 | | | | | | | 105 | 39.6 | |

A-work not started (0%), B- (1-10%) - estimates prepared , C- (11-25%) -Programmes, D - (26-50%)-Programmes E -(51-75%)-Programmes, F - (76-99%)-Programmes, G - 100%- Programmes

Deyata Kirula National Development Program

Progress as at 2015.12.31

| Serial No. | Project name | Alocated amount (Rs.) | Physical progress | Amount paid (Rs.) | continuation amount of year 2016 (Rs.) |
|------------|---|-----------------------|-------------------|-------------------|--|
| 1 | Construction of three storied building of Urubokka National School | 35000000.00 | 25% | 6314047.96 | 28685952.04 |
| 2 | Construction of Ramya Mohotti Chest Clinic 1 st Stage | 30000000.00 | 25% | 4748222.00 | 25251778.00 |
| 3 | Development Kananke weekfair | 18000000.00 | 60% | 1868850.24 | 16131149.76 |
| 4 | Development Midigama weekfair | 18000000.00 | 60% | 1284500.11 | 16715499.89 |
| 5 | Renovation of building of Post office of Hakmana | 10000000.00 | 40% | 2044578.90 | 7955421.10 |
| 6 | Construction of dental clinic at Primary school of eyandara and a building for disable children 1 st stage | 7000000.00 | 50% | 980394.00 | 6019606.00 |
| 7 | Construction of Three storied buiding at District Hospital of Morawaka | 45000000.00 | 40% | 6728653.00 | 38271347.00 |
| 8 | Implementation of Randiya Community Based water scheme of Parapamulla | 4000000.00 | 45% | 168497.20 | 3831502.80 |
| 9 | Constrection of trade complex of Malimbada | 71000000.00 | 45% | 13952580.23 | 57047419.77 |
| 10 | Construction of Sangawasa of Parama Vichithrarama Rajamaha Vihara of Devinuwara | 21000000.00 | 80% | 17114530.66 | 3885469.34 |
| 11 | Construction of toilet system and building of Rajamaha Vihara of Weherahena | 12000000.00 | 70% | 4113889.18 | 7886110.82 |
| | Total | 271000000.00 | | 59318743.48 | 211681256.52 |

Provincial Road Development Program (2011)
Physical and financial progress as at 2015.12.31

| Name of Div. Sec. Division | No. of roads | Length of the road k.m. | Estimate Rs. m. | Physical progress | | | | | | | Total cost Rs. m. | Expenditure of 2015 Rs. m. |
|-------------------------------|--------------|----------------------------|-----------------|-------------------|-------|--------|--------|--------|--------|------|-------------------|-------------------------------|
| | | | | 0% | 1-20% | 21-40% | 41-60% | 61-80% | 81-99% | 100% | | |
| Devinuwara | 13 | 47.9 | 1063.18 | | | | | | | 100% | 736.50 | 101.00 |
| Weligama | 10 | 27.9 | 589.39 | | | | | | | 100% | 442.20 | 44.14 |
| Akuressa | 09 | 28.95 | 603.73 | | | | | | | 100% | 432.78 | 42.06 |
| Deniyaya | 08 | 28.95 | 662.20 | | | | | | | 100% | 514.29 | 45.91 |
| Total | 40 | 133.7 | 2918.51 | | | | | | | | 2125.77 | 233.11 |

4.3.4 Development of school playgrounds in relation to Asain Youth Athletic Festival 2017

Progress as at 2015.12.31

| Div. Sec. Division | School name | Project task | Allocation (Rs.) | Amount spent as at 2015.12.31 (Rs.) | Physical progress | Remarks |
|-----------------------|----------------------------|--|---------------------|--|----------------------|---------|
| Kotapola | Morawaka National School | Fill soil and leveling | 1000000.00 | 981992.88 | 100% | |
| | Morawaka National School | Fill soil, leveling and making drainage system | 1000000.00 | 932659.33 | 100% | |
| | Pallegama Secondary School | Fill soil, leveling and constructing retaining wal | 2000000.00 | 888594.85 | 50% | Cont. |
| Malimbada | Sunedha Maha Vidyalaya | Fill soil and leveling playground | 100000.00 | 97970.00 | 100% | |

| | | | | | | |
|--|--------------------------------|-------------------------|------------|------------|------|-------|
| | Akurugoda Junor school | Fill soil and leveling | 100000.00 | 97970.00 | 100% | |
| | Malimbada North Maha Vidyalaya | Levelling of playground | 100000.00 | - | 35% | Cont. |
| | Telijawila Central College | Levelling of playground | 100000.00 | 97930.03 | 100% | |
| | Total | | 4400000.00 | 3097117.09 | | |

4.3.5 Activities of Divineguma National program.

Divineguma Livelihood Development Proram - 2015

Livelihood Development Proram was implemented under 04.object codes on allocation given by Divineguma Development Department and Ministry of Social Empowerment and Social Welfare in order to financially strengthen low income people.

Livelihood program was implemented as a subsidy of 90% and 40% on the instructions of criteria and circulars given here and 10% of community contribution and circular loan basis.

In addition, circular loan program and marketing development program were also implemented in relation to Livelihood Development Proram. Summarized details pertaining to each projects implemented under different object codes are as follows.

Divineguma Livelihood Development Proram - 2015

Physical progress

| Object code | Allocation made | No. of projects implemented | | | | Amount spent Rs. m. | Percentage |
|----------------|-----------------|-----------------------------|-----------|---------|---|---------------------|------------|
| | | Agri. | Fisheries | Poultry | Industries and entrepreneur development | | |
| 331-2-2-2-2502 | 30.6 | 544 | 71 | 45 | 1193 | 18.2 | 60% |
| 123-2-6-1-1501 | 28 | 157 | 5 | - | 430 | 14.3 | 51% |
| 123-2-6-4-2105 | 25 | 48 | 24 | 6 | 268 | 25 | 100% |

Divineguma Livelihood Development Proram - 2015

Financial proress

| Object code | Allocation made Rs. m. | Amount spent Rs. m. | | | | Amount spent Rs. m. | Percentage |
|----------------|------------------------|---------------------|-----------|---------|---|---------------------|------------|
| | | Agri. | Fisheries | Poultry | Industries and entrepreneur development | | |
| 331-2-2-2-2502 | 30.6 | 4.4 | 1.02 | 1.6 | 12.15 | 18.17 | 60 |
| 123-2-6-1-1501 | 28 | 3.1 | 0.1 | - | 11.1 | 14.3 | 51 |
| 123-2-6-4-2105 | 25 | 3 | 1.5 | 1.5 | 19.5 | 25 | 100 |

Marketing Development Program - 2015

Physical and Financial progress

| Mobile vehicle and stalls | | No. of programs | | Amount spent | |
|---------------------------|--------------------|-----------------|--------------------|--------------------|--------------|
| No. of projects | Amount spent Rs.m. | No. of projects | Amount spent Rs.m. | No. of Exhibitions | Amount spent |
| 18 | 336,500.00 | 16 | 234,983.00 | 17 | 952,806.00 |

Training programs done by District Divineguma - 2015

| | | No. of participants | Amount spent Rs.m. |
|--|-----------|---------------------|--------------------|
| 1. Offices and office systems Public financial management | 1. Course | 50 | 49,775.00 |
| | 2. Course | 50 | 41,531.39 |
| Total | | 100 | 91,306.39 |

Above 02 training courses were held at District Divineguma Training Center under financial allocation given by Dept. of Divineguma Development.

These 02 training courses were held in November and December in 2015 and Divineguma Officers, Divineguma Management Assistants of District office, Divineguma Development Officers who are in charge of Accounts and establishment Affairs of Divisional Secretariats, Social Security Development Officers and Head Quarters Managers participated.

Diriya Piyasa Housing Development Program - 2015

In this program implemented by Department of Divineguma Rs. 75,000/= is given to each beneficiary for the construction of a house.. In the selection of beneficiaries priority is given to unsecured families with widows, disabled persons, and more female members..

15 houses are built for one seat and number of houses for each Div. Sec. division will be decided according to number of divisions.

Accordingly total number of houses for the district is 150.. taking into consideration appeals received by District Secretary and since the needy approval and allocation were received total number of houses built in the district is 122.

Diriya Piyasa Housing Development Program – 2015

| Serial No. | Div. Secretary's division | Diriya Piyasa Niwasa | | | | | | | |
|------------|---------------------------|------------------------|-----------------|---------------------------------------|------------------|----------------------|----|-----|----|
| | | No. of houses approved | Allocation made | No. of houses completed construction. | Allocation spent | Stages of completion | | | |
| | | | | | | i | ii | iii | iv |
| 1 | Matara | 19 | 1425000.00 | 17 | 1425000.00 | 2 | - | 7 | 8 |
| 2 | Weligama | 8 | 600000.00 | 8 | 380000.00 | - | - | 4 | 4 |
| 3 | Kamburupitiya | 5 | 375000.00 | 5 | 375000.00 | - | - | 2 | 3 |
| 4 | Hakmana | 5 | 375000.00 | 5 | 375000.00 | - | - | 2 | 3 |
| 5 | Pasgoda | 8 | 600000.00 | 8 | 420000.00 | - | - | 3 | 5 |
| 6 | Kotapola | 6 | 450000.00 | 6 | 412500.00 | - | - | 1 | 5 |
| 7 | Pitabeddara | 8 | 600000.00 | 8 | 600000.00 | - | 1 | - | 7 |
| 8 | Malimbada | 7 | 525000.00 | 5 | 180000.00 | 1 | - | 2 | 2 |
| 9 | Akuressa | 8 | 600000.00 | 8 | 545000.00 | - | 3 | 5 | - |
| 10 | Dikwella | 9 | 675000.00 | 9 | 600000.00 | - | - | 2 | 7 |
| 11 | Thihagoda | 6 | 450000.00 | 6 | 240000.00 | - | - | 1 | 5 |
| 12 | Mulatiyana | 8 | 600000.00 | 8 | 600000.00 | - | 2 | - | 6 |
| 13 | Devinuwara | 7 | 525000.00 | 7 | 380000.00 | - | 1 | 3 | 3 |
| 14 | Welipitiya | 10 | 750000.00 | 10 | 525000.00 | 3 | - | 1 | 6 |
| 15 | Athuraliya | 4 | 300000.00 | 4 | 200000.00 | - | - | 3 | 1 |
| 16 | Kirinda | 4 | 300000.00 | 4 | 300000.00 | - | - | - | 4 |
| | Total | 122 | 9150000.00 | 118 | 7557500.00 | 6 | 7 | 36 | 69 |

Social Development Program 2015 / 112/31 Progress as at 12/31

| Program activities / sub activities | Physical progress | | | Financial progress | | | |
|---|-------------------|------------------|---------------------|--------------------|-------------------------|------------------------------------|-----------|
| | Annual target | Monthly progress | Qumilative progress | Dept. contribution | Faondation contribution | Contribution of other institutions | Total |
| Social Development program | | | | | | | |
| Spiritual Development | | | | | | | |
| Programs of uplifting | 7800 | 103 | 300 | | | 180625.00 | 180625.00 |
| Selebrating special religious day and special programs | 7800 | 32 | 183 | | 15600.00 | 12500.00 | 28100.00 |
| Designing child societies Pirith chantind | 650 | | | | | | |
| Programs of analyzing songs and literary works implemented at the level of Dhamma school and schools. | 7800 | 2 | | | | 1080.00 | 1080.00 |
| Programs of correct using of public properties and securing what we belong | 7800 | 3 | 9 | | | | |
| Promoting happiness and affection within the family unit (Happy family). | | | | | | | |
| No. of happy families identified. | 3250 | | | 11575.00 | | | |
| Happy family that follow a proper Management method | 3250 | 29 | 56 | | | 2550.00 | 2550.00 |

| | | | | | | | |
|--|------|----|----|--|----------|----------|----------|
| No. of families who understood the gender and development | | 17 | 96 | | | | |
| No. of families who started promotion of savings | | | | | | | |
| Dug and cigarette prevention programs | | | | | | | |
| No. of programs implemented for reducing the attraction for cigarettes and alcohol. | 7800 | 39 | 44 | | 8782.00 | 3500.00 | 12282.00 |
| No. of functions free of alcohol | 7800 | 7 | 1 | | | | |
| No. of traders who refrained from selling cigarettes | 650 | | | | | | |
| No. of traders who refrained from selling drugs | 650 | 7 | | | | | |
| No. of Community organizations who inactively contribute for a community which is free from use of drugs (Children, youths and other) | 1950 | 14 | 8 | | | 10268.00 | 10268.00 |
| No. of families who released from stress due to use of drugs (Attacking women etc,) | 3250 | 9 | | | | | |
| Implementation of a proper system in the village pertaining to child protection and welfare. | | | | | | | |
| No. of Kekulu Children societies reformed | 650 | 5 | 24 | | | | |
| No. of aesthetic and cultural programs held for children of children societies of all levels of age. | 7800 | 9 | 68 | | 61000.00 | 38330.00 | 99330.00 |
| Competition of asking questions. | 650 | 3 | 5 | | | | |
| No. of programs done to introduce career guidance. | 7800 | 7 | 35 | | | | |
| No. of opportunities children gathered around cultural | 650 | 25 | | | | | |

| | | | | | | | |
|--|------|----|----|----------|---------|---------|----------|
| centers. | | | | | | | |
| No. of Awadi groups started for the child protection in village society and Janasabha in every divisions. | 650 | 2 | 2 | | | | |
| Re- socialization of women leadership | | | | | | | |
| Special programs for pregnant mothers | 7800 | 6 | | | | | |
| Helpful programs for aggrieved women | 7800 | 17 | | | | 2000.00 | 2000.00 |
| Special programs for women whose husbands were remanded | 7800 | 2 | | | | 3000.00 | 3000.00 |
| Special program done for the women upliftment. | 7800 | 2 | 4 | 40000.00 | 6500.00 | | 46500.00 |
| Internatinal days celebrating programs | | | | | | | |
| Programs held in relation to International Women's Day - 08 March. | 650 | 6 | 12 | | | 1000.00 | 1000.00 |
| Programs held in relation to International anti skoking Day - 31 May. | 650 | 4 | 5 | | 2250.00 | 2000.00 | 4250.00 |
| Programs held in relation to International Literacy Day | 650 | 2 | 2 | | | | |
| Implementation of children and adults programs held in relation to International Childern and Adults Day - 01 October March. | 1300 | | | | | | |
| Programs held in relation to Poverty Eleviation Day | 650 | | | | | | |
| Other special international day programs | 650 | | | | | | |
| Model villages program | | | | | | | |
| No. of Model villages identified | 16 | 16 | | | | | |

| | | | | | | | |
|--|--------|-----|-----|-----------|----------|-----------|-----------|
| No. of inauguration programs done in the villages | 16 | 2 | 1 | 110700.00 | | | 110700.00 |
| No. of other special programs started. | 48 | 16 | | | | | |
| Programs / other special programs jointly implemented with sponsor institutions. | 80 | 19 | | | | | |
| Progress review | | 16 | | | | | |
| District / Divisional progress review | 51 | 3 | | | | | |
| Total | 114611 | 424 | 855 | 150700.00 | 94132.00 | 256853.00 | 390985.00 |

Progress of Social Development Foundation as at 31.12.2015

| Serial No. | Div. Secretary's division | Description of program done (program name) | No. of programs | Amount Rs. |
|------------|---------------------------|---|-----------------|------------|
| 1 | Matara | Giving toilet aid | 15 | 150000.00 |
| 2 | | Giving financial aid for completing remaining works of the house | 1 | 25000.00 |
| 3 | Mulatiyana | Women's day programs | 1 | 6900.00 |
| 4 | | Sisu Diriya scholarship | 19 | 75600.00 |
| 5 | | Construction of sanitary toilets | 1 | 15000.00 |
| 6 | | completing remaining works of the house | | 230000.00 |
| 7 | | House hold management programs and family development programs | | 5900.00 |
| 8 | | Giving garments for Ketiya Maha Vidyalaya to participate in national competitions | | 9300.00 |
| | Total | | | 175000.00 |

**Construction of Divineguma Community Based Banks - 2015
(On Departmental allocations)**

| Serial No. | Div. Secretariat | Bank | Project | Amount approved (Rs.) | Expenditure (Rs.) | Other |
|------------|------------------|----------|------------------|-----------------------|-------------------|-----------------------|
| 1 | Welipitiya | Borala | New construction | 1000000.00 | 1000000.00 | Completed first stage |
| | | Kananke | New construction | 1000000.00 | 1000000.00 | Completed first stage |
| 2 | Matara | Godagama | Renovation | 572261.00 | 523890.82 | Completed |
| Total | | | | 2572261.00 | 2523890.82 | |

4.3.6 Annual Progress Review of Small Enterprise Development division.

Small Enterprise Development Division which is functioning under District Secretariat plays a major role through the implementation of various programmes for the upliftment of small entrepreneurs.

| Serial No. | Programme | Annual target | | | Achieving targets | | | Progress % | |
|-------------|--|---------------|---------------|----------------|-------------------|---------------|----------------|------------|------------|
| | | Programes | Beneficiaries | Allocation Rs. | Programes | Beneficiaries | Allocation Rs. | Allocation | Programmes |
| 1 | Special awareness | 1 | 100 | 30000 | 1 | 171 | 25170 | 84% | 100% |
| 2 | Obile awareness | 1 | 100 | 40000 | 1 | 1 | 21114 | 53% | 100% |
| 3 | Ordinary one day awareness | 10 | 300 | | 17 | 741 | | | |
| 4 | Path to business | 7 | 210 | 105000 | 7 | 229 | 118232 | 112% | 100% |
| 5 | Anagement training programs | 7 | 210 | 140000 | 6 | 160 | 108527 | 78% | 86% |
| 6 | Marketing management training programs | 2 | 60 | 40000 | 2 | 57 | 29860 | 75% | 100% |
| 7 | Costing training program | 2 | 60 | 30000 | 2 | 54 | 29235 | 97% | 100% |
| 8 | Accounting program Dena ana Man) | 1 | 30 | 30000 | 1 | 34 | 33386 | 111% | 100% |
| 9 | Business planning program | 1 | 30 | 20000 | 1 | 23 | 17860 | 89% | 100% |
| 10 | Echnology program | 2 | 60 | 60000 | 1 | 29 | 54570 | 91% | 50% |
| 11 | Business consultancy | 1 | 100 | 40000 | 1 | 125 | 31150 | 78% | 100% |
| 12 | Market exhibition | 1 | 50 | 300000 | 1 | 53 | 299000 | 100% | 100% |
| 13 | Development of Entreprenuer Associations | 2 | 70 | 25000 | 1 | 84 | 8250 | 33% | 50% |
| 14 | Awareness program og accounting | | | | 1 | 35 | 3900 | 100% | 100% |
| 15 | Productivity program | 1 | 30 | 50000 | 1 | 26 | 46550 | 93% | 100% |
| 16 | Follow up workshop | 8 | 240 | 60000 | 7 | 216 | 20502 | 34% | 88% |
| 17 | Selection for award ceremony | | | | 2 | 41 | 16775 | 100% | 100% |
| 18 | Project inspection | 8 | 200 | 107000 | 7 | 167 | 110154 | 103 | 88% |
| Grand total | | 55 | 1850 | 1077000 | 60 | | 974235 | | |

Reforatiion of Association



District Secretariat Matara

Ruunu Shakthi Enterprise sales fair



Chidren Park – Uyanwatta, Matara

Follow up report



Follw up tour – Matara district

Management training workshop



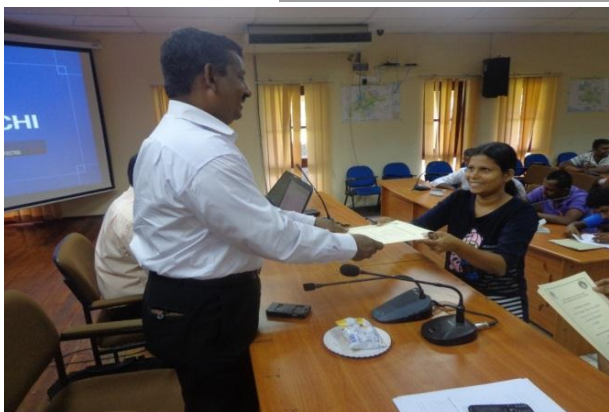
Div. Secretariat of Pitabeddara

Marketing Management program



Div. Secretariat of Malimbada

Workshp of introducing accounting sofaware



District Secretariat of Matara

Other achieving of targets of Small Enterprise Development division

| Description | Annual target | Achieving targets | As a percentage |
|------------------------------------|---------------|-------------------|-----------------|
| Starting new businesses | 70 | 63 | 90% |
| Development of existing businesses | 140 | 137 | 98% |
| Preparing business plans | 14 | 1 | 7% |
| Providing consultancy services | 60 | 52 | 87% |
| Referring for loans | 46 | 36 | 78% |
| Loan issued Rs. | 28225000.00 | | |

4.3.7 Performance of District Agricultural Division.

Rs. 7.80995m was received as total allocation for Matara district under Ministry of Agriculture and 03 main projects were implemented. They are,

01.Commercial farm project

02.Young agriculture Enterprenuer Project

03.Fruit Village project

Physical and financial progress of those programs as summaries are mentioned below. 50% contribution for private beneficiaries and 100% contribution were given to government institutions were given.

| Serial No. | Project | Allocation Rs. m | Benefits granted | No. of beneficiaries | Cost Rs.m. |
|------------------|---|------------------|--------------------------------|----------------------|------------|
| 1 | Commercial farm project | 3.38 | Giving 05 food drying machines | 5 | 0.403872 |
| | (1) Preparing jack, plantain and curry leaves as value added products | | Giving 01 grinding machine | | |
| | (11) Cultivation of leafy vegetable under GAP technology. | | Cultivation of leafy vegetable | 20 | 0.294837 |
| | (111) Setting up of agricultural enterprises | | Giving agricultural equipments | 113 | 1.897629 |
| | | | 92 | | |
| | | | Mushrooms houses | - | |
| | | | 05 | | |
| | | | Secured houses | - 07 | |
| | | | Raun cover | - 07 | |
| | Banana plants | | 50 | -01 | |
| Pineapple plants | 1100 | -01 | | | |
| Total | | 3.38 | | 118 | 2.596339 |

Award of set of Agricultural equipment worth Rs. 20585/= to Nilwala College of Education under this project.

| Serial No | Project | Alocation Rs. m. | Benefits given | No. of beneficia ries | Cost Rs.m. |
|-----------|--|------------------|---|-----------------------|------------|
| 2 | Young agricultural Entrepreneurial project | 3.67995 | | | |
| | (1) Motivation of Nursu ry keepers | | Giving agri equipments and raun coverings for nursery keepers | 8 | 0.3358725 |
| | (11) Pruducing mushroom seeds | | Giving pressure cookers and mushroom seeds producing nets. | 4 | 0.155352 |
| | (111) Set up agricultural enterprises | | Sets of Agri. equipments - 54 | 90 | 2.280295 |
| | | | Cattle sheds - 01 | | |
| | | | Mushroom house - 14 | | |
| | | | Secure house - 09 | | |
| | | | Rain covers - 07 | | |
| | | | Papaya plants 100 - 02 | | |
| | | | Raw chillie plants 500 | | |
| | | | Herbal plants 56 | | |
| | | | Flower plants 150 | | |
| | | | Fruit stalls 01 | | |
| Total | 3.67995 | | 102 | 2.77152 | |

Under young Agriculture entrepreneurs project, benefits of 100% of state contribution is also included.

| Serial No. | Firm | Benefit given | Cost (Rs.) |
|------------|---------------------------------------|--|------------|
| 1 | Ayurvedic Hospital - Welipitiya | Herbal plants - 56 | 1,965.00 |
| 2 | Kamburugamuwa new hospital | Raw chillies plants - 500, Papaya plants - 50 | 5,500.00 |
| 3 | Vidatha Center - Pitabaddara | Agricultural equipments | 15,580.00 |
| 4 | Pradeshiya Sabha - Pitabaddara | Agricultural equipments | 12,480.00 |
| 5 | Derangala junior school | Agricultural equipments | 6,140.00 |
| 6 | Kaduruwana junior school- Pitabaddara | Agricultural equipments | 10,810.00 |
| 7 | Nadugala Maha Vidyalaya, Nadugala | Cement flower pots -50, Clay flower plots - 100 | 15,400.00 |

| | | | |
|-------|--|---------------------------|------------|
| 8 | Mugunamulla Junior school, Mugunamulla | Agricultural equipments | 6,850.00 |
| 9 | Div. Secretariat - Kotapola | Setting up of fruit stall | 21,226.00 |
| 10 | Almeda Maha Vidyalaya - Urumuththa | Agricultural equipments | 22,850.00 |
| 11 | Udahoragala Junior school - Waralla | Agricultural equipments | 6,850.00 |
| 12 | Godakumbura Junior school - Kotapola | Agricultural equipments | 6,850.00 |
| Total | | | 132,501.00 |

| Serial No. | Project | Allocatioon Rs. m. | Benefits given | No. of beneficiaries | Cost Rs. m. |
|------------|-------------------------|--------------------|----------------------|----------------------|-------------|
| 3 | Fruit villages projects | 0.75 | Orange plants - 2800 | 816 | 0.681525 |
| | Total | 0.75 | | 816 | 0.681525 |

A few occasions of giving opportunities under commercial farm projects.

1. Giving drying machines



Giving a drying machine to a patient of Psychological unit of Kamburugamuwa Hospital who recovered

2. A few occasions of giving sets of agri. equipments.for nursery plants under young agricultural entrepreneurship project.



4.3.8 National Fertilizer Secretariat

| Serial No. | Activity | No. of programs | No. of beneficiaries | Physical progress | Financial progress |
|------------|--|-----------------|-----------------------------------|-------------------|--------------------|
| 1 | Training programs | | | | |
| | 1.1 Farmer training | 03 | 152 | 100% | 86% |
| | 1.2 Officer training | 01 | 50 | 100% | 100% |
| | Officers | | | | |
| | Farmers | | | | |
| 2 | Assuring sample inspection and quality of manure | | | | |
| | 2.1 Inspection of sample at field level | 25 | Sample 37 | 148% | 90% |
| 3 | Stock verification and inspection of stores | | | | |
| | 3.1 At main stores | 04 | | 100% | } 85% |
| | 3.2 At regional stores | 22 | | 100% | |
| | 3.3 Fitness inspection of stores for issuing permits | 38 | | 100% | |
| 4 | Soil test | | | | |
| | 4.1 Paddy lands | | | | |
| | 4.2 high lands | | | | |
| | Total | | Beneficiaries 202 Sample 37 | | |

5 Annual Accounts

5.1 Appropriation Account

DGSA 1

Appropriation Account by Programme - 2015

Expenditure Head No: 262 Name of Ministry / Department / District Secretariat: District Secretariat Matara

| Programme Number given in Annual Estimates | | (1) | (2) | (3) | (4) | (5) | (6) | Page No. (Reference to relevant DGSA 2 format) |
|--|--|-------------------------------------|--|--|---------------------------------------|----------------------|---|---|
| | Title of the Programme given in Budget Estimates | Provision in Budget estimates | Supplimentar y Provision and Supplimentar y Estimate Allocation | Transfers in terms of F.R.66 and F.R.69 | Total Net Provision (1+2+3) | Total Expenditure | Net Effect Savings/ (Excesses) (4-5) | |
| | | Rs. | Rs. | Rs. | Rs. | Rs. | Rs. | |
| 1 | <u>Recurrent</u> Operational activities | 690650000 | 303700000 | 37438000(40248000) | 991540000 | 929717502 | 61822498 | 2 |
| | Sub Total | 690650000 | 303700000 | 37438000(40248000) | 991540000 | 929717502 | 61822498 | |
| 1 | <u>Capital</u> Operational activities | 80000000 | - | 2810000 | 82810000 | 71216800 | 11593200 | 2 |
| | Sub Total | 80000000 | - | 2810000 | 82810000 | 71216800 | 11593200 | |
| | Grand Total | 770650000 | 303700000 | 40248000(40248000) | 1074350000 | 1000934302 | 73415698 | |

Appropriation Account by Programme - 2015

Expenditure Head No. : 262 Name of Ministry / Department / District Secretariat :District Secretariat - Matara.

Programme No. & Title 01 Operational Activities

Summary of Recurrent and Capital Expenditure

| Nature of Expenditure with DGSA format Reference | (1) | (2) | (3) | (4) | (5) | (6) | Page No. (Reference to relevant DGSA format) |
|--|-------------------------------------|---|---|-----------------------------------|----------------------|----------------------------------|---|
| | Provision in Budget Estimates | Supplimentary Provision and Supplimentary Estimate Allocation | Transfers in terms of the F.R. 66 and F.R. 69 | Total Net Provision (1+2+3) | Total Expenditure | Net Effect Savings/(Excesses) | |
| | Rs. | Rs. | Rs. | Rs. | Rs. | (4-5) | |
| (a) Recurrent (DGSA 3) | 690650000 | 303700000 | 37438000(40248000) | 991540000 | 929717502 | 61822498 | 3 |
| (B) Capital (DGSA 4) | 800000000 | - | 2810000 | 82810000 | 71216800 | 11593200 | 4 |
| Total | 770650000 | 303700000 | 40248000(40248000) | 1074350000 | 1000934302 | 73415698 | |

Recurrent Expenditure by Project

Expenditure Head No : 262

Name of Ministry / Department /District Secretariat:District Secretariat,Matara

Programme No. & Title : 01 Operational Activities

| Project No./Names,personel emoluments and other expenditure for all projects | (1) | (2) | (3) | (4) | (5) | (6) |
|--|-------------------------------------|--|---|-----------------------------------|----------------------|--|
| | Provision in Budget Estimates | Supplimentar y Provision and Supplimentar y Estimate Allocation | Transfers in terms of the F.R. 66 and F.R. 69 | Total Net Provision (1+2+3) | Total Expenditure | Net Effect Savings/(Excesses) (4-5) |
| | Rs. | Rs. | Rs. | Rs. | Rs. | Rs. |
| <u>Project No:01 & Title:General</u> Administration and Institutional services District Secretariat Personel Emoluments(from 1001 to 1003) | 84900000 | - | 150000(31500000) | 53550000 | 53242103 | 307897 |
| Other charges(from 1101 to1506) | 23300000 | - | 1413000(4388000) | 20325000 | 20295446 | 29554 |
| Sub Total | 108200000 | - | 1563000(35888000) | 73875000 | 73537549 | 337451 |
| <u>Project No.02 & Title:Divisional Secretariat</u> Personel Emoluments(1001 - 1003) | 506500000 | 303700000 | 31500000 | 841700000 | 780536716 | 61163284 |
| Other charges (1101 - 1506) | 75950000 | - | 4375000(4360000) | 75965000 | 75643237 | 321763 |
| Sub Total | 582450000 | 303700000 | 35875000(4360000) | 917665000 | 856179953 | 61485047 |
| | | | | | | |
| Grand Total | 690650000 | 303700000 | 37438000(40248000) | 991540000 | 929717502 | 61822498 |

Capital Expenditure by Project

DGSA 4

Expenditure Head No : 262

Name of Ministry / Department / District Secretariat: District Secretariat, Matara

Programme No. & Title : 01 ,Operational Activities

Project No. & Title : General Administration Services - District
Secretariat, Matara

| Object Code No. | Item No. | Finance (Code No.) | Description of Items | Provision in Annual Estimates | Supplimentary Provision and transfers in terms F.R.66 and 69 | Total Net Provision (1+2) | Total Expenditure | Net Effect Savings/(Excesses)(3-4) |
|-----------------|----------|--------------------|---|-------------------------------|--|---------------------------|-------------------|------------------------------------|
| | | | | (1) | (2) | (3) | (4) | (5) |
| | | | | Rs. | Rs. | Rs. | Rs. | Rs. |
| 2001 | | | Rehabilitation of Capital Assets and improvements | | | | | |
| 2002 | 11 | | Buildings | 7600000 | 2030000 | 9630000 | 9592798 | 37202 |
| 2003 | 11 | | Plant, machinery and equipments | 2300000 | - | 2300000 | 2160418 | 139582 |
| | 11 | | Vehicles | 2000000 | 100000 | 2100000 | 2091377 | 8623 |
| | | | sub total | 11900000 | 2130000 | 14030000 | 13844593 | 185407 |
| 2102 | | | Acquisition of capital assets | | | | | |
| 2103 | 11 | | Furniture and office equipment | 8000000 | 680000 | 8680000 | 8619527 | 60473 |
| 2104 | 11 | | Machinery | 1750000 | - | 1750000 | 1723336 | 26664 |
| | 11 | | Buildings | 57000000 | - | 57000000 | 45686221 | 11313779 |
| | | | sub total | 66750000 | 680000 | 67430000 | 56029084 | 11400916 |

| | | | | | | | | |
|------|--|----|---|----------|---------|----------|----------|----------|
| | | | Total | 78650000 | 2810000 | 81460000 | 69873677 | 11586323 |
| 2401 | | 11 | Capacity Building Traning and Capacity Building | 500000 | - | 500000 | 497514 | 2486 |
| | | | sub total | 500000 | - | 500000 | 497514 | 2486 |
| | | | Grand total | 79150000 | 2810000 | 81960000 | 70371191 | 11588809 |

DGSA 4

Capital Expenditure by Project

Expenditure Head No : 262

Name of Ministry / Department / District Secretariat: District Secretariat, Matara

Programme No. & Title : 01 ,Operational Activities

| Object Code No. | Item No. | Finance (Code No.) | Description of Items | Provision in Annual Estimates | Supplimentary Provision and transfers in terms F.R.66 and 69 | Total Net Provision (1+2) | Total Expenditure | Net Effect Savings/(Excesse s)(3-4) |
|-----------------|----------|--------------------|--|-------------------------------------|---|---------------------------------|----------------------|---|
| | | | | (1) | (2) | (3) | (4) | (5) |
| | | | | Rs. | Rs. | Rs. | Rs. | Rs. |
| 2401 | | 11 | Capacity Building Traning and Capacity Building | 850000 | - | 850000 | 845609 | 4391 |
| | | | Grand total | 850000 | - | 850000 | 845609 | 4391 |

Programme wise Financing Expenditure Summary

(Total of Recurrent & Capital Expenditure)

Head No. 262

Name of Ministry/Department/District Secretariat : District Secretariat, Matara

Programme 01 : Operation Activities

| | Finance | Project 01 | | Project 02 | | Total | | Percentage of Expenditure (6/5)* 100 |
|------|------------------------------------|------------------|-----------------------|------------------|-----------------------|------------------|-----------------------|--|
| Code | Source | Net Provision | Actual Expenditure | Net Provision | Actual Expenditure | Net Provision | Actual Expenditure | |
| 11 | Domestic Funds | 1074350000 | 1000934302 | - | - | 1074350000 | 1000934302 | 93 |
| 12 | Foreign aid - loan | | | | | | | |
| 13 | Foreign aid - Grant | | | | | | | |
| 14 | Reimbursable Foreign aid - grant | | | | | | | |
| 15 | Imbursable foreign aid - grant | | | | | | | |
| 16 | Counterpart Fund | | | | | | | |
| 17 | Foreign aid related domestic funds | | | | | | | |
| 21 | Special law services | 1074350000 | 1000934302 | - | - | 1074350000 | 1000934302 | 93 |
| | Total (Capital) | | | | | | | |

Project wise Financing of Expenditure each Programme(Total of Recurrent Expenditure Project wise of Programme)

Head No. 262

Name of Ministry/Department/District Secretariat : District Secretariat, Matara

Programme 01 : Operation Activities

| Code | Finance | Project 01 | | Project 02 | | Project 03 | | Programme Total / Page Total | |
|------|------------------------------------|---------------|--------------------|---------------|--------------------|---------------|--------------------|------------------------------|--------------------|
| | Source | Net Provision | Actual Expenditure | Net Provision | Actual Expenditure | Net Provision | Actual Expenditure | Net provision | Actual Expenditure |
| 11 | Domestic Funds | 73875000 | 73537549 | 917665000 | 856179953 | - | - | 991540000 | 929717502 |
| 12 | Foreign aid - loan | | | | | | | | |
| 13 | Foreign aid - Grant | | | | | | | | |
| 14 | Reimbursable Foreign aid - grant | | | | | | | | |
| 15 | Imbursable foreign aid - grant | | | | | | | | |
| 16 | Counterpart Fund | | | | | | | | |
| 17 | Foreign aid related domestic funds | | | | | | | | |
| 21 | Domestic funds | 73875000 | 73537549 | 917665000 | 856179953 | - | - | 991540000 | 929717502 |
| | Total (Recurrent) | | | | | | | | |

Project wise Financing of Expenditure each Programme(Total of Capital Expenditure Project wise of Programme)

Head No. 262

Name of Ministry/Department/District Secretariat : District Secretariat, Matara

Programme 01 : Operation Activities

| Code | Finance | Project 01 | | Project 02 | | Project 03 | | Programme Total / Page Total | |
|------|------------------------------------|---------------|--------------------|---------------|--------------------|---------------|--------------------|------------------------------|--------------------|
| | Source | Net Provision | Actual Expenditure | Net Provision | Actual Expenditure | Net Provision | Actual Expenditure | Net provision | Actual Expenditure |
| 11 | Domestic Funds | 81960000 | 70371191 | 850000 | 845609 | - | - | 82810000 | 71216800 |
| 12 | Foreign aid - loan | | | | | | | | |
| 13 | Foreign aid - Grant Reimbursable | | | | | | | | |
| 14 | Foreign aid - grant | | | | | | | | |
| 15 | Imbursable foreign aid - grant | | | | | | | | |
| 16 | Counterpart Fund | | | | | | | | |
| 17 | Foreign aid related domestic funds | | | | | | | | |
| 21 | Domestic funds | 81960000 | 70371191 | 850000 | 845609 | - | - | 82810000 | 71216800 |
| | Total (Capital) | | | | | | | | |

Project wise Financing of Expenditure each Programme
(Total of Recurrent & Capital Expenditure Project wise of Programme)

Head No. 262 Name of Ministry/Department/District Secretariat : District Secretariat, Matara

Programme 01 : Operation Activities

| Code | Finance | Project 01 | | Project 02 | | Project 03 | | Programme Total / Page Total | |
|------|------------------------------------|---------------|--------------------|---------------|--------------------|---------------|--------------------|------------------------------|--------------------|
| | Source | Net Provision | Actual Expenditure | Net Provision | Actual Expenditure | Net Provision | Actual Expenditure | Net provision | Actual Expenditure |
| 11 | Domestic Funds | 155835000 | 143908740 | 918515000 | 857025562 | - | - | 1074350000 | 1000934302 |
| 12 | Foreign aid - loan | | | | | | | | |
| 13 | Foreign aid - Grant | | | | | | | | |
| 14 | Reimbursable Foreign aid - grant | | | | | | | | |
| 15 | Imbursable foreign aid - grant | | | | | | | | |
| 16 | Counterpart Fund | | | | | | | | |
| 17 | Foreign aid related domestic funds | | | | | | | | |
| 21 | Domestic funds | 155835000 | 143908740 | 918515000 | 857025562 | - | - | 1074350000 | 1000934302 |
| | Total (Recurrent and Capital) | | | | | | | | |

5.2 Govt. Officers' Advance Account B for 2015

| Description | Max. limit of expenditure (Rs. Cts.) | Minimum limit of receipts (Rs. Cts) | Max. limit of credit (Rs. Cts.) |
|---|--------------------------------------|-------------------------------------|---------------------------------|
| Approved limit as per estimates of 2015 | 56965000.00 | 41965000.00 | 200000000.00 |
| Amended limit | | | |
| Actual value of 2015 | 65476372.90 | 68997392.26 | 190362202.79 |

Govt. Officers' Advance Account B for 2015

| Loan category | District Secretariat | | Divisional Secretariats | | Total amount paid (Rs. Cts.) |
|------------------|----------------------|-------------------|-------------------------|-------------------|------------------------------|
| | No. of paid to | Amount (Rs. Cts.) | No. of paid to | Amount (Rs. Cts.) | |
| Distress loans | 39 | 2433421.00 | 429 | 30889342.90 | 33322763.90 |
| Festival advance | 91 | 910000.00 | 1324 | 132472250.00 | 13382250.00 |
| Special advance | 33 | 132000.00 | 574 | 2299200.00 | 2431200.00 |
| Bicycle loans | - | - | 05 | 29962.00 | 29962.00 |
| Total | 163 | 3475421.00 | 2332 | 165690754.90 | 49166175.90 |

5.3 General Deposit Account

| Acc.No. | Initial balance as at 01.01.2015 | Receipts within year 2015 (Rs. Cts.) | payments within year 2015 (Rs. Cts.) | Final balance as at 31.12.2015 |
|------------------|--|--|--|-----------------------------------|
| 6003-0-0-38-0 | 403766900.68 | 324973376.84 | 728740277.52 | 0.00 |
| 6000-0-0-1-69 | - | 447576.04 | 48724.08 | 398851.96 |
| 6000-0-0-2-0-93 | - | 7250.00 | - | 7250.00 |
| 6000-0-0-13-0-61 | - | 15367468.39 | 4972313.60 | 10395154.79 |
| 6000-0-0-16-0-44 | - | 339779602.55 | 2982903.12 | 336796699.43 |
| 6000-0-0-17-0-23 | - | 91188355.16 | 2186002.12 | 89002353.04 |
| Total | 403766900.68 | 771763628.98 | 738930220.44 | 436600309.22 |