



# **PERFORMANCE REPORT**

2016

**DEPARTMENT OF NATIONAL PHYSICAL PLANNING**

**MINISTRY OF MEGAPOLIS & WESTERN DEVELOPMENT**

## Contents

• Contents	01
• Acknowledgement	02
• Vision and Mission	03
01. Director General's Message	04
02. Structural framework of the organization	06
03. List of Staff Officers of the Department	07
04. Performance of the Administration Division	08
05. Performance of the Regional Physical Planning division	13
06. Performance of the Local Physical Planning division	17
07. Performance of the Engineering division	22
08. Performance of the Architecture division	25
09. Performance of the Accounts division	28

## **Acknowledgement**

Town and Country Planning Department was established in 1947 under the Town and Country Planning Ordinance No. 13 of 1946. Since the necessity of a sustainable Development Process together with sectoral development that is linked with regional development arose, this department was then converted to National Physical Planning Department under the Town & Country Planning (Amendment) Act, No. 49 of 2000. First of all, I would like to offer my heartiest gratitude towards all of the staff who dedicated, accordingly, in the year 2016, in succeeding the intensions and goals of the department.

Further, I wish to offer my gratitude, on behalf of the staff of this department, for all the officers and staff of the Ministry of Mega polis and Western Development for their directions, guidance and heartiest collaboration that enabled the department to extend the meaningful service by the department. Likewise, I would also wish to offer the gratitude for all district secretaries, divisional secretaries, mayors, chairmen, commissioners and secretaries of provincial councils for their precious collaboration and duty wise dedication for planning functions of the department.

Last, but not least, I would like to thank all the public institutions, other respective institutions and personnel who contributed miscellaneous support in carrying out the functions of the department in the year 2016.

**Director General**

**National Physical Planning Department**

### **Mission**

“To formulate national physical policies, plans and strategies and to ensure and monitor the implementation of such national policies and plans through regional and local plans with the object of promoting and regulating integrated planning of economic, social, physical and environmental aspects of land and territorial waters of Sri Lanka.”

## 01. Director General's Message

Housing and Town Improvement Ordinance No 19 of 1915 was enforced with the objective of addressing issues of construction of dwellings in and around the settlements in Colombo, the capital city, during the British era. But, there had been certain constraints for the development of cities as a consequence of the harbor and railways which were not covered by the aforesaid act. As a remedial measure to address these constraints, town and country planning department was established under the "Town and Country Planning Ordinance No 13 of 1946. Thereinafter, development schemes for implementation of settlement plans commenced in Island-wide connecting all the local governments.

Ignorance of development initiatives in the peripheral regions resulted in poverty, disparity in resource distribution and allocation, income disparity, as a consequence of messy developmental initiatives without proper planning and future vision, centralization of administration on Colombo and other main cities, and emergence of unrest and grievances from the majority of marginalized population who sustained upon the subsidies as they neither had lucrative livelihood nor basic facilities. This scenario felt the necessity of overall, sustainable development process together with sectoral and Regional development.

As a remedial measure, the National Physical Planning Department was established in year 2000 under the amendments to the Town and Country Planning Ordinance No.13 of 1946 made by the Amendment Act No.49 of 2000, aimed at formulating a National Physical Planning based upon a National Physical Planning Policy.

The Mission of the Department is "to formulate national physical policies, plans and strategies and to ensure and monitor the implementation of such national policies and plans through regional and local plans with the object of promoting and regulating integrated planning of economic, social, physical and environmental aspects of land and territorial waters of Sri Lanka."

Accordingly, the National Physical Planning Department possesses a renowned history of seven decades in formulation, implementation and updating the National, Provincial and Regional Physical Planning, formulation of planning for the development of sacred lands, architectural and engineering designs together with relevant layouts.

The National Physical Planning department has played and has been paying a pivotal and immense role as a Focal Public Establishment in Planning through optimizing the utility of scarce natural resources, ensuring environmental protection, planning for new towns with comprehensive infrastructure and urban facilities and establish them in a natural disaster resilient manner, recognizing applicable new urban indicators to Sri Lanka, identification of suitable industrial parks

to Sri Lanka to absorb strategic economic development opportunities and thereby ensuring Sustainable Economic Development, in collaboration with all the local government establishments, Island-wide.

This is a collaborative and collective effort by the main divisions such as National Physical Planning Division, Provincial Physical Planning Division, Regional Physical Planning Division, Research Division together other collaborative divisions – control, Engineering, Accounting, and Architecture divisions. The comprehensive reports on the performance of each aforesaid divisions has been depicted separately under each chapters hereunder, for the year 2015.

The Ministry of Mega Polis and Western Development, the leader in mega polis development in Sri Lanka and other affiliated establishments played a pivotal role by implementing different programmes in celebration of “World Cities Day 2015” and it is worthwhile to express that the contribution made by the National Physical Planning Department is noted as a key performance for the year 2015. I am much pleased to express that the future planning shall be aimed at implementation of eliminating regional socio-economic disparities, to empower a motivated and dedicated human resources that would ensure achieving the Nobel and dignified objective of ensure endowment of prosperous country to the motherland.

Dr. Jagath Munasinghe,

Director General

National Physical Planning Department

## 2. Organizational Chart (Organogram)

### 3. List of the staff of the Department from 01.01.2016 to 31.12.2016

1. Director General – Dr. Jagath Munasinghe
2. Director Control – Mr. A.W.R. Wimalaweera
3. Director (Regional Physical Planning) – Mrs. Champa Amaraweera
4. Chief Internal Auditor – Mr. R.t.B.A.A. Rathnayake
5. Director (Architecture) – Mrs. H.D.C.P. Hettiarachchi
6. Director - Engineering – Mr. C. Kularathna
7. Chief Accountant – Mrs. R.P. Susantha
8. Assistant Director (Engineering) – Mr. K.Sumanadasa
9. Assistant Director (Control) – Mr. A.R.S. Samarasinghe
10. Assistant Director (Architecture) – Mr. C.W.K.Bandaranayake
11. Accountant – Mrs. T.C. Pushpakumari
12. Assistant Director (Control) – Mr. N.G.P.G. Samarawickrama



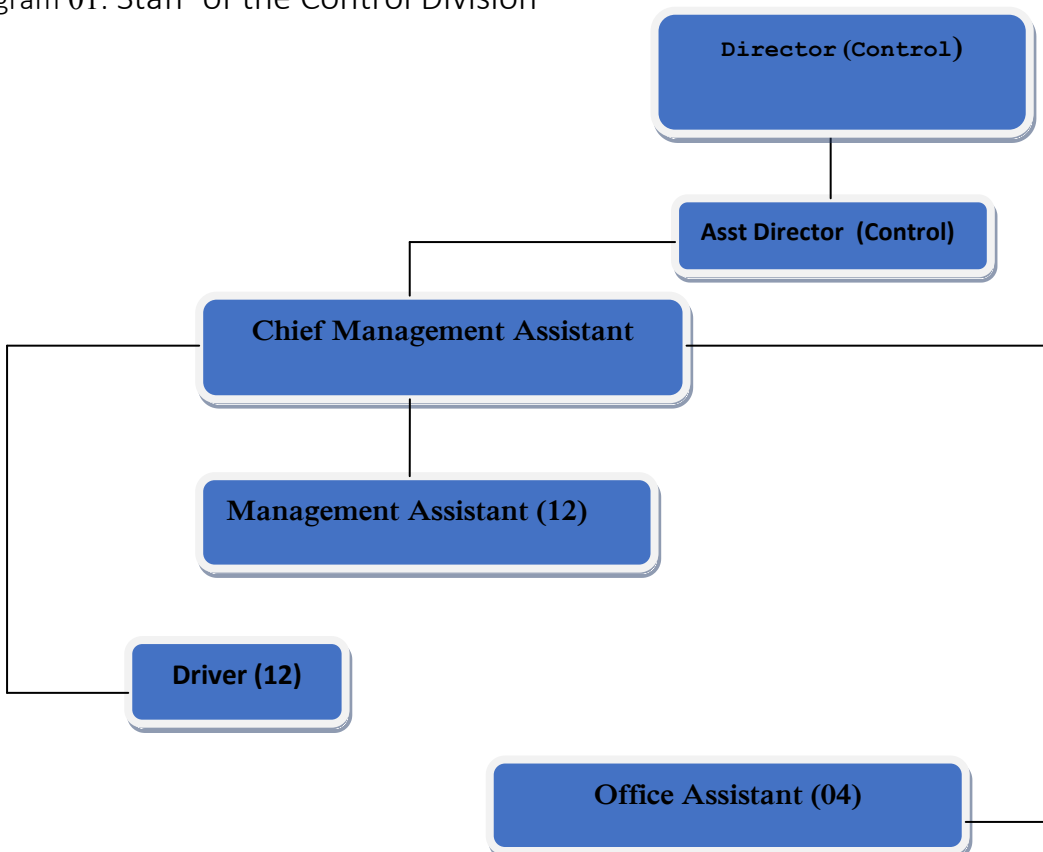
#### 04. Performance of the Administration Division

The main role of the control division is to facilitate ancillary services required in achieving objectives that are expected to be reached through the mission of the department, in an efficient and productive manner.

In this context, the control division is responsible in human and physical resource management, establishment and administrative functions, implementation of policy decisions, provision of ancillary services for all other divisions of the department and administration of the staff of sacred lands.

Control Division functioned under the direct supervision of Director (Control) since 1<sup>st</sup> January 2016 to end of the same year. The division comprised with 31 staff members.

Diagram 01: Staff of the Control Division



Source – departmental Source

#### 4.1 Main Objective of the Control Division

- ❖ Maintain a modest number of approved staff as so to achieve the objectives of the
- ❖ Formulation, obtaining approvals and implementation of procedures for recruitment and promotions
- ❖ Act as a focal point for capacity building, welfare and disciplines of the staff

#### 4.2 Day-to-day routing duties include,

- ❖ Attend day-to-day functions of postal communication
- ❖ Inter divisional and intra divisional coordination
- ❖ Attend request from the general public
- ❖ Attend request from the staff
- ❖ Maintenance of records and update personal files of the staff
- ❖ Management of transport units
- ❖ Relevant functions of employee salaries, allowances, travelling allowances and all other payments

Moreover,

- ❖ Attend and coordinate issues arising from the Parliament, complaints of the human rights commission, responding for public petition committees and Audit Queries.
- ❖ Carry out Staff Performance Assessment
- ❖ Conduct Efficiency Bar Examinations
- ❖ Ensure the security of the department
- ❖ Attend maintenance related functions
- ❖ Preparation of Cabinet papers
- ❖ Administration of staff of sacred lands

As at 31.12.2016, Overall staff strength of the Department inclusive of staff of the sacred land was 387 where the staff exclusively deployed for sacred land was 103.

Serial No	Staff category	Title Name	Relevant service of the title	Salary scale	Apprd No
01	Senior Executive	Director General	Departmental	SL3/2016 Special	1
02	Senior Executive	Additional Director General Implementation 01 Planning 01	Departmental	SL3/2016 Special	2
03	Senior Executive	Director - Control	Sri Lanka Administrative Service -I	SL 1/2016	1
04	Executive	Internal Auditor	Sri Lanka Accounting Service -III	SL 1/2016	0
05	Chief Internal Auditor	Chief Accountant	Sri Lanka Accounting Service -I	SL 1/2016	1
06	Executive	Director (Engineering	Sri Lanka Engineering Service -I	SL 1/2016	1
07	Executive	Director	Departmental	SL 1/2016 Class 1	4
08	Executive	Director	Sri Lanka Architecture Service -I	SL 1/2016 Class iii, ii	1
09	Executive	Deputy Director/ Assistant Director (Control)	Sri Lanka Administrative Service –II/III	SL 1/2016 Class iii, ii	1
10	Executive	Internal Auditor	Sri Lanka Accounting Service -II	SL 1/2016	1
11	Executive	Accountant	Sri Lanka Accounting Service –II/III	SL 1/2016	1
12	Executive	Deputy Director / Assistant Director	Sri Lanka Engineering Service –II/III	SL 1/2016	3
13	Executive	Deputy Director / Assistant Director	Departmental	SL 1/2016 (Class ii &II)	30

		(Town Planning)			
14	Executive	Legal Officer	Departmental	SL 1/2016 (Class ii & II)	1
15	Executive	Administrative Officer	Public Management Assistant's Service Higher Grade	SL 1/2016	1
16	Tertiary	Senior Quantitative Surveyor	Sri Lanka Technical Service -Special	MN 7/2016A	1
17	Tertiary	Chief Overseer (Special Class)	Sri Lanka Technical Service -Special	MN 7/2016A	2
18	Tertiary	Planning Office Assistant	Sri Lanka Technical Service -Special	MN 7/2016A	3
19	Tertiary	Information and Communication Technical Officer	Sri Lanka Information and Communication Service - Special	MN 7/2016A	1
20	Tertiary	Development Assistant	Departmental	MN 6/2016A II/I	3
21	Secondary	Development Officer	Development Officer Service-III/III/I	MN 4/2016A	20
22	Secondary	Physical Planning Assistant – Town Planning	Departmental	MN 4/2016A	14
23	Secondary	Physical Planning Assistant – Architecture	Departmental	MN 4/2016A	1
24	Secondary	Planning Technician	Sri Lanka Technical Service –III/II/I	MN 3/2016A	21
25	Secondary	Overseer/Technical Officer	Sri Lanka Technical Service –III/II/I	MN 3/2016A	9
26	Secondary	Quantitative Surveying Assistant	Sri Lanka Technical Service –III/II/I	MN 3/2016A	7
27	Secondary	Public Administrative Assistant	Public Management Assistants Service–III/II/I	MN 2/2016A	34
28	Secondary	Geographical Information System Technician	Departmental	MT 2/2016A	6

29	Primary (Non-Technical)	Receptionist	Departmental –III/II/I	MN 7/2016A-	1
30	Primary (Non-Technical)	Planning – Printer	Departmental –III/II/I/Special	PL 1-2016A	2
31	Primary (Non-Technical)	Surveying Assistant	Departmental –III/II/I/ Special	PL 1-2016A	3
32	Primary (Non-Technical)	Planning in charge	Departmental –III/II/I/ Special	PL 1-2016A	1
33	Primary (Non-Technical)	Planning Updater	Departmental –III/II/I/	PL 1-2016A	1
34	Primary (Non-Technical)	Driver	Integrated Driver Service –III/II/I/ Special	PL 3-2016A	14
35	Primary (Non-Technical)	Office Assistant	Office Assistants Service –III/II/I/ Special	PL 1-2016A	17
36	Primary (Non-Technical)	Bungalow Keeper	Departmental -111/11/1/Special	PL 1-2016A	4
37	Primary (Non-Technical)	Watchman	Departmental -111/11/1/Special	PL 1-2016A	4
38	Primary (Non-Technical)	Overseer/Work Supervisor	Departmental	PL 3-2016A	5
39	Primary (Non-Technical)	Laborer	Departmental	PL 1-2016A	40
40	Primary (Non-Technical)	Watchman	Departmental	PL 1-2016A	4
41	Primary (Non-Technical)	Tourist Bungalow Assistant	Departmental	PL 1-2016A	5
42	Primary (Non-Technical)	Gardening Assistant	Departmental	PL 1-2016A	4
43	Primary (Non-Technical)	Sanitary Laborer	Departmental	PL 1-2016A	5
Total					284

In addition to this, staff exclusively approved for the sacred lands

44	Primary (Non-Technical)	Overseer (Work Supervisor)	Departmental	MT 2 -2006A	2
45	Primary (Non-Technical)	Overseer (Work Supervisor)	Departmental	PL 1 -2006A	7
46	Primary (Non-Technical)	Watchman	Departmental	PL 1 -2006A	10
47	Primary (Non-Technical)	Laborer	Departmental	PL 1 -2006A	84
Total					387

Source – Department source

## **05. Performance of Regional Physical Planning Division**

### **5.1 Purpose**

The Main Role of the Division is formulation of National Physical Planning, National Physical Planning Policy and Regional Physical Planning.

### **5.2 Staff**

In 2016, the position of Director of this division remained vacant, however, the duties of the division were also performed by the Director of Regional Physical Planning division. The role of the division was carried out by 09 Physical Planning Assistants.

### **5.3 National Physical Planning and policy formation**

The National Physical Planning Policy and the Plan are very crucial to strategically capitalize locally globally available economic development opportunities, coordination of physical development process nationally and internationally, mitigating existing social, economic and physical disparities, conserving and promoting natural environment network and environmentally high sensitive areas, and establishing ecofriendly environment with settlements, towns and other infrastructural facilities and forest in appropriate places, and enhancing the benefits of national economy by two, third folds.

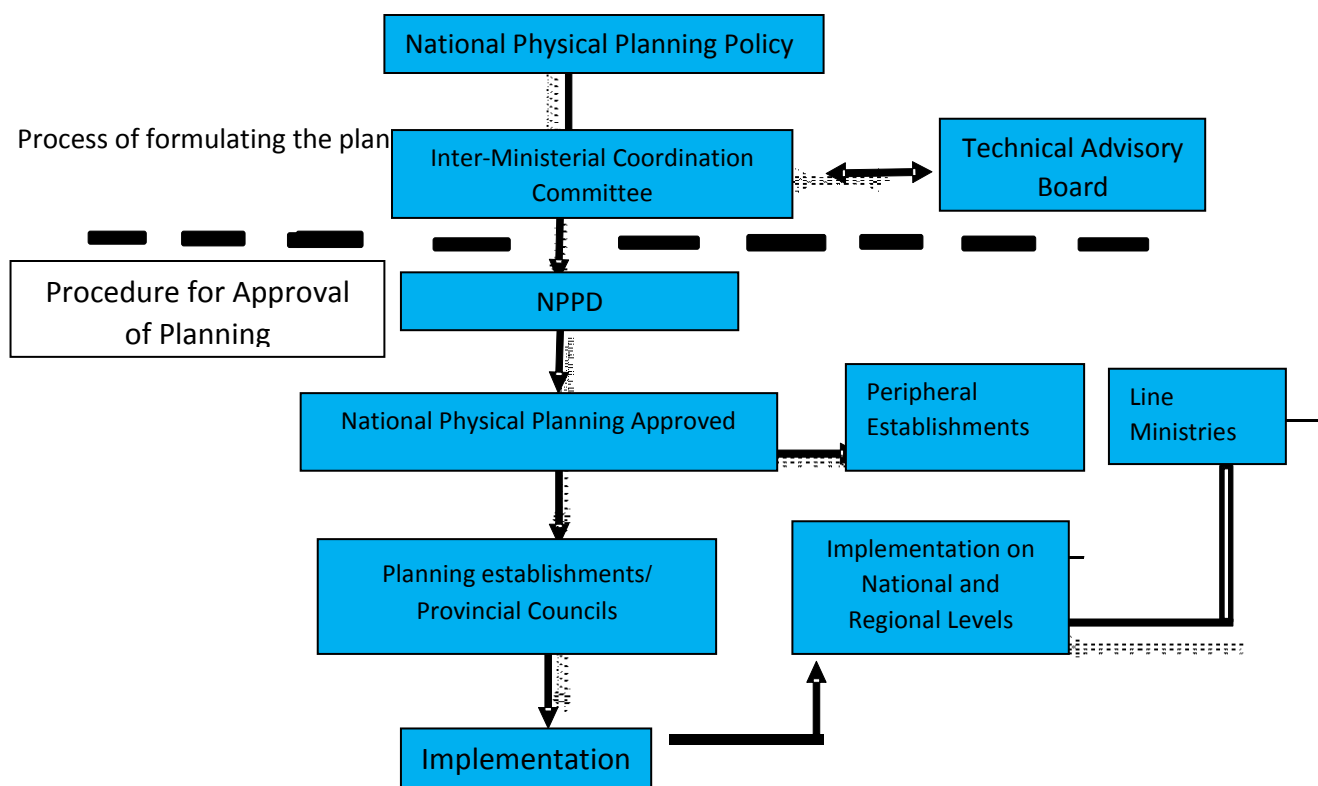


Diagram 02: Process of formulation of National Physical Planning

## 5.4 Completed activities in 2016

### 5.4.1 Amendment of National Physical Planning Policy

The National Physical Planning Policy which was formulated to achieve the aforesaid objectives, has been approved by the National Physical Planning Committee (NPPC) chaired by the President of Sri Lanka, in the year 2011. Currently, the said planning policy is being amended to pacify the inconsistencies observed between the Physical Planning which has already been formulated and the physical planning formulated by other establishments.

Pertinent data and information were collected under nine (09) sectors in order to update the National Physical Planning and National Physical Planning Policy. An awareness workshop for all stakeholders of aforesaid nine sectors, was conducted on 20.12.2016 aiming at creating comprehensive awareness amongst the stakeholders on the significance of updating National Physical Planning and National Physical Planning Policy.



In addition to the aforesaid core objective, following objectives are also important;

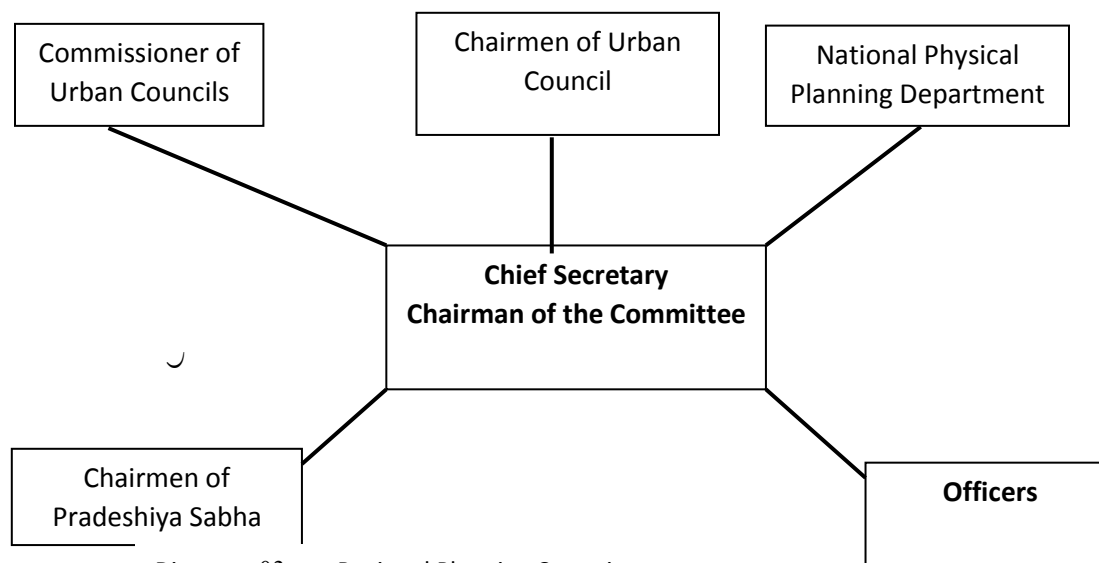
- i. To focus on the Development Programs that are significant in National and Regional levels, in formulation of National Physical Planning and Policy.
- ii. Due to non-availability of Central Information System in Place in Sri Lanka, to acquire a better comprehension about the data and information scattered in different establishment that are crucial for physical, social and economic development.

#### **5.4.2 Formulation of Regional Plans**

- ❖ Regional plans are formulated by the Regional Planning Committee
- ❖ Regional Planning Committee is chaired by the Secretary of the Provincial Council.
- ❖ All chairmen of Urban Councils/pradeshiya (local Government) Sabha, Commissioner of Municipal Council within the Province are the members of Regional Planning Committee
- ❖ Further, certain officer in the public establishment are also included in this committee

The Physical Planning department is established particularly to extend its support to Provincial council through formation of Regional Plans for the respective provincial councils. Thus, the department extends following supports to the Provincial Councils;

- ✓ Providing technical support
- ✓ Provision of expertise service on any required discipline
- ✓ Supports on convene meetings, presentations and to obtain feedbacks and comments from the general public.
- ✓ Supports to collect relevant information from any relevant establishments
- ✓ Supports to formulate plans and presentations
- ✓ Supports to disburse funds required for implementation of plans



## 5.5 Activities completed in 2016

Regional Physical Planning should comply with the National Physical Planning and Policy. Regional Development Plans were not formulated in 2016, as the National Physical Planning and Policy was being updated during the year.

## 6. Regional Physical Planning Division

### 6.1 Role

Regional Physical Planning Division accomplishes the task of extending support for Local Government Authorities in formulation of Plans for the cities that are recognized as regionally significant entities by the Regional Physical Plans and to provide technical support for sacred land developmental initiatives.

### 6.2 Staff

Twelve (12) Development Assistants, Three (03) Development Officers, Four (04) Physical Planning Assistants and Two (02) Office Assistants are deployed directly under the supervision of Director of Regional Physical Planning.

### 6.3 Role of Regional Physical Planning Division

- Formulation of Plan for small cities
- Implementation of such plans via projects such as “PuraNeguma”
- Formulation of plans for settlement for disaster affected communities
- Declaration of recognized areas “Sacred Urban Development Regions by Gazette notifications
- Formulation of Development plans for sacred Land.
- Implementation of relevant projects in sacred lands in Anuradhapura, Kataragama, Mahiyangana, Muthiyangana, Kandy, Kelaniya and Alu Viharaya.
- Providing observational reports and recommendations for land utilization patterns by Divisional Secretariats and other establishments
- Implementation of projects assigned by the Ministry, from time to time.

### **Objectives of formation of Small Cities**

- Provision of basic Urban facilities for the majority (70%) of Sri Lankan population
- Shifting investment exists in close proximity towards the rural entities
- Establishment of urban facilities in the close proximity for the communities that seek for facilities under messy urbanization
- Creation of “Super Rural-Urban System” that connect with “Small Megacities”
- Devoting “Super Rural-Urban System” that are significant in terms of Social, economic, cultural, archeological and environmental aspects to the general public
- Laying foundation for a “Super Rural-Urban System” enrich with all amenities, infrastructural facilities that are available in a smart megacity.

### **6.4. Activities accomplished during 2016**

#### **Northern Province**

##### **1. District of Trincomalee**

##### **Seruwawila Sacred Land Development Scheme**

Under this Sacred Land Scheme, plans for the “Dharmashala” for the “Mangala Raja Maha Viharaya” has been completed during the year 2016 and construction activities are in progress with the financial contribution of donors.

Department has received a request to formulate a plan for construction of Public Lavatory Unit within the premises from the Chief Priest. For this purpose following activities are in progress;

- Preparation of architectural designs
- Preparation Engineering plans

- Estimation

This is scheme that commenced in 1970s. The department maintains the following facilities under this scheme;

- Project Office
- Resting premises for the pilgrims
- Tourist Guest House

Since the Department had not obtained the Title Report for land where the aforesaid resting premises and tourist guest house are located, the department has obtained the Title Report during the period. Updating the Layout Plan with necessary amendment for sacred land which was formulated somewhere in 1980 has commenced. Formulation of plans for a bikkhu's residence and Dhana Shala have also been commenced in parallel to ongoing activities of updating said layout plan.

Only staff member who is, exclusively, deployed for the sacred land scheme is a Gardner who has been serving for more than 30 years. Therefore, it is proposed to recruit following;

✓ Assistant Bungalow Keepers	-	01
✓ Gardeners	-	02
✓ Sanitary laborers	-	01

In 2016, Guests were not accommodated at the Resting premise and the Guest House. Guest House currently requires full refurbishment. Resting Premise has, temporarily, been release to use as a training center until April 2018 as per the request made by youth corps.

## 2. Ampara District

### Sri Wijayananda Pirivena

The Department has received a request to formulate a plan for the construction of "Bikkhu's Residence" from Venerable Kirindiwela Somarathna Thero, Chief of the Temple who is a graduate in Master of Arts.

- Preparation of architectural designs
- Preparation Engineering plans

I. Preparation of Layout (Sketch Plan) for "Punchi Seegiriya" has been commenced

"Bikkhu's Residence" at Arantalawa The Department has received a request to formulate a plan for the construction of "Bikkhu's Residence" from Venerable Kirindiwela Somarathna Thero, Chief of the Temple who is a graduate in Master of Arts.

- II. Following functions have been commenced for construction of “Bikkhu’s Residence” at Arantalawa

#### **“Punchi Seegiriya” Raja Maha Viharaya**

This premise was declared as a “Sacred Land” by the Gazette Extraordinary of Democratic Socialist Republic of Sri Lanka No 1877/65 dated 29.08.2014 of the by the Minister of Buddha Sasana and Religious Affairs.

Even though this is not implemented as “Sacred Land Development Scheme” by the Department, upon the provisions granted by the Ministry in 2008, the Department has formulated a plan for a “Bikkhu’s Residence” and completed construction of one Phase.

- I. Formulation of structural layout for “Small Seegiriya” – sketch plan

#### **Bikkhus residence – Arantalawa**

The Department has received a request to formulate a plan for the construction of “Bikkhu’s Residence” from Venerable Kirindiwela Somarathna Thero, Chief of the Temple who is a graduate in Master of Arts.

Following activities are in progress after field visits for preliminary examination for the construction of aforesaid “Bikkhu’s Residence”

- ii. Following activities have already been accomplished for the Bikkhus residence – Arantalawa
  - Preparation of architectural designs
  - Preparation Engineering plans
  - Estimation
- II. Bikkhus residence – Sri Vidyananda Pirivena
  - Preparation of architectural designs
  - Preparation Engineering plans

### **3. Batticaloa district**

#### **Bikkhus residence at “Pulukunawa”**

- Preparation of plan for Bikkhus residence at “Pulukunawa” has been commenced on the request of Venerable Kirindiwela Somarathna Thero, Chief of the Temple.

#### 4. Kelaniya

Preparation of development plan for Kelaniya sacred land and neighboring premises

#### 5. Kataragama –

- I. Planting 3000 seedlings/plants in the “Herbal Garden” - Kataragama
- II. Getting transferred the Vishrama Shala (Resting hall) from “Krivehera” and cleaning the premises
- III. Gazette publication by declaration of “Hathagoda Raja Maha Viharaya” as a sacred land
- IV. Formulation of project proposal for declaration of “Rangiri Viharaya” as a sacred land and to publish in the Gazette
- V. Preparation of plan for Bikkhus residence at Mulkirigala and submit the same to Ministry of Buddhist Religious Affairs for estimation
- VI. Color washing the resting places (Gimanhala) for Esala Perahera and cleaning the premises for other function of the Perahera ceremony

#### 6. Polonnaruwa

- I. Taking steps for construction of arch (Vahalkada) for Dimbulagala sacred land
- II. Taking steps for construction of temples and bikkhu residence at Dimbulagala sacred land
- III. Formulation of project proposal for declaration of “Mahasen Temple - Minneriya” as a sacred land and to publish in the Gazette
- IV. Rajarata Navodaya – Actions being taken to grant approval for consultancy, supervision, relevant bills of 15 health project of “Pibidemu Polonnaruwa Project”
- V. Accomplished relevant functions of Polonnaruwa Tourist Guest house
- VI. Field Observations for formulation of development plan for “Kalukele sub-city”
- VII. Completed construction of concrete slab of the relevant building for preaching stage (Dharma Mandapaya) of Sri Sambuddha Temple – Imbulakanda.

#### 7. Colombo

- I. Construction of concrete posts for the relevant building for “Mundigala Aaranya Senasanaya” , Library and residential rooms have been completed and construction of concrete slab to be completed.
- II. Concrete slab has been constructed for the relevant building proposed for Preching stage of the “Imbulakanda Sri Sambuddha Viharaya”

## **8. Kalutara**

- I. Request has been made to declare “Kande Viharaya” as a sacred land
- II. Prepared plan and estimation for Bikkhu residence at “Pukunuwita Kithsiri Mevan Raja Maha Viharaya”
- III. Preparation of development plan for “Olaboduwa Sri Jayawardanarama Purana Vihara and further plans and estimations are being formulated for multi-purpose building and preaching/chanting hall (Pirith mandapa)
- IV. Plans and estimations are being prepared for meditation chambers and Preaching hall at Kalutara “Methsith Arana” and Sri Subhodhirajaramaya Temple
- V. Plans and estimations are being prepared for meditation chambers and Preaching hall for “Kithsiri Mevan Rajamaha Viharaya – Pokunuwita”.

## **9. Mahiyangana and Muthiyangana**

- I. Sacred Land Scheme – Mahiyagana
  - a) A team including 01 overseer, 23 laborers, 02 watchmen, staff comprise of National Physical Department are deployed in garbage disposal on daily basis, grazing, maintenance of plants, day to cleaning and landscaping
- II. Tourist guest House – mahiyangana
  - a) A team including Bungalow watchman, 02 watchmen, 02 laborers and 05 staff of National Physical Department are deployed in maintenance of Tourist bungalow
- III. Sacred Land Scheme – Muthiyangana
  - a) 01 overseer, 04 laborers and 05 staff of National Physical Department are deployed in day-to-day cleaning functions

## **10. Sacred Land – Kandy**

Day-to-day cleaning functions, grazing, maintenance of plants, landscaping activities in the sacred land of Kandy are carried out by the staff comprised of 29 members.

## **11. Sacred Land – Matale Aluviharaya**

Day-to-day cleaning functions, grazing, landscaping activities in the sacred land of matale Alu Vihare are carried out by the staff comprised of 04 members

## **7. Performance of the Engineering Division**

### **7.1 Role –**

The main role of the division is accomplishment of engineering services that are required in planning and implementation of National plans, Zonal plans , Regional plans , Small Towns, Community town , Buildings and landscaping plans in an efficient manner.

### **7.2 Staff -**

Functions of the Engineering Division are carried out in three sub-divisions such as Engineering, overseeing, quantitative surveying under the direct supervision of Director of the Engineering Division. Under the Director of Engineering Division, there are two assistant engineers, two overseers, two quantitative surveyor, a development officer and two survey assistants are deployed in the service.

### **7.3 Day-to day routing activities.**

- Preparation of structural framework for buildings
- Provision of consultancy for constructions and contractual administrative functions



- Preparation of estimates
- Preparation of payment reports and vouchers.
- Land acquisition and transfer of state land unto provincial council establishments for land surveying and development activities.
- Carry out land utilization surveys and prepare reports for town planning
- Formulate suitable development plans, carry out field observations, land surveying, mapping, preparation of contour lines and establishing town plans, construction plans on the land that suit in development planning.
- Overall administration of construction sites with regard to building constructions, landscaping and maintenances.
- Overseeing, supervision, preparations of bills and vouchers, approve bills, reports on redemption of security deposits and submission of progress reports relevant to building constructions and landscaping.
- Preparation of estimates for maintenance of buildings possessed by the department and engage in maintenance activities

#### 7.4 Activities accomplished during the year 2016

No	Tasks Accomplished	Cost in Rs.
01	Structural planning and contractual administration – “Meth Sith Arana”project – Construction of Library and Meditationa Chamber of Sri Sumanasiri Aaranya Senasana - Mundigala	500,000.00
02	Structural planning and contractual administration – “Meth Sith Arana”project , construction of “Dharma Mandira Building” Siri Sambuddhi Viharaya, Homagama	3,00,000.00
03	Structural planning and contractual administration – “Sikhitha Purawara” Project, construction of multi-purpose building, Sumanana keerthi Maha Pirivena, Naranwala	5,000,000.00
04	Structural planning and contractual administration – “Sikhitha Purawara” Project, construction of multi-purpose building, Nalikeramaya, Meewitigammana	2,600,000.00
05	Structural planning and contractual administration - Construction of Dimbulagala Rajamaha Viraya Arch (Wahalkada)	
06	Structural planning and contractual administration - Construction of Dimbulagala Rajamaha Viharaya – Piriven Building	

07	Structural planning and contractual administration - Construction of Dimbulagala Rajamaha Viharaya – Living (Avasa) Building	
08	Structural planning and contractual administration - Construction of Dimbulagala Rajamaha Viharaya – Preaching chamber (Dharma Shala)	
09	contractual administration – Construction of quarters for Medical Officers , Four square Hospital	
10	contractual administration – Construction of Primary Health Clinical Unit and other quarters, Four square Hospital	
11	contractual administration – Construction of primary clinical unit, Hingurakgoda Hospital,	
12	contractual administration – construction of 3 storied quarter for 30 medical officers, Medirigiriya Hospital, Polonnaruwa	
13	contractual administration – Rehabilitation of Ayurvedic Hospital, Manampitiya	
14	contractual administration – Construction of mortuary building – Bakamoona Hospita, Polonnaruwa,	
15	contractual administration – Construction of 3 storied quarters for medical officers Hingurakgoda Hospital, Polonnaruwa	
16	contractual administration – Dental Clinic, Construction of district Hospital, Hingurakgoda Hospital, Polonnaruwa	
17	Contractual Administration – Construction of quarters for Medical Specialists, Welikanda Hospital	
18	contractual administration – Construction of “Mother and child clinical Unit, Welikanda District Hospital	
19	contractual administration – construction of building for Out- Patients Division (OPD) and Welikanda District Hospital	
20	contractual administration – Landscapping activities for Sri Maha Bodhi Vihara, Anuradhapura	1,050,000.00
21	Structural planning and contractual administration - Construction in Getabaruwa Dewala premises	
22	Acquisition of land and survey reports for leasing and developmental activities	
	Divisional Secretariat office - Madampe	
	Divisional Secretariat office – Waligepola in Kuruwita	
23	Land surveying functions	
	Construction of building for Meevitigammana Nalikaramaya and planning for sacred lands	
	Construction of building for Narammala Sumanakeerthi Maha Pirivena and planning for sacred lands	
	Conversion of “Sri Sambodhi Viharaya” in to a sacred land	
	Development of “Sri Sambodhirajaramaya” for a meditation center	

	Surveying activities of Getabaruwa Temple premises and Kataragama sacred land	
24	Preparation of estimations	
	Devinuwara Resting premises – Maintenance Activities	
	Construction of “Bounseth Aaranya”	
	Maintenance Activities of Kataragama Vishrama Shala (Resting premises)	
	Head Office for Narahenpita “Ramanna Chapter’	
	Government Rest House (Vishrama Shala) of Panduwasnuwara, Chilaw	
25	Maintenance of building possessed by the Department	
	Maintenance of Head Office - Kandy	

Source - Departmental

## 8. Architecture Division

### 8.1 Role

Architecture Division is operated by the Director of Architecture. Relevant Architectural designs for the projects undertaken by the Director (Architecture) and structural designs given by the Assistant Director (Architecture), Physical Planning Assistants and Engineering Division and layout plans produced by Regional and Provincial Planning Divisions are assigned to Planning Technicians by planning Office Assistants of the Architecture Division and thus the main role of the division is to drawing computer based sketch plans, site supervision and management, printing and safeguarding of formulated plans, preparation of plans and maintenance. Likewise, the division is responsible for storage, making copies, maintenance and safeguarding of such sketch plans formulated by the department.

- I. Formulation and submission of Architectural designs, plans and proposals for the projects directly received from the line ministry, Department of Buddhist Affairs and Ministry of Buddhasasana to the relevant clients and other establishments.
- II. Formulation of Architectural designs, Engineering structural designs, urban layout and sketch plans.
- III. Carry out better coordination with other divisions of National Physical Planning Department

- IV. Obtaining approvals from relevant institutions for Architectural Designs and Plans
- V. Site related field observation, site based discussions, conducting and participation for seminars, supervision of constructions, monitoring standards and maintenance
- VI. Active participation at the Technical Evaluation Committee (TEC)
- VII. Accomplishment of procurement activities and extend support for the same.

## 8.2 Staff

The staff is managed and supervised by the Director –Architecture Division. The division comprise of three (03) Assistant Director/Deputy Directors, one (01) Physical Planning Assistants (architecture), three (03) planning office assistants and 21 planning technicians. Under the director supervision of the Director (Engineering), One Office Assistant and several Planning Technicians, as per service requirement, have been deployed under Planning Office Assistant to carry out Quantitative Surveying functions. The structural designs that are formulated by relevant Architects, Engineers and town planners are submitted to the Director of Architecture division, and then are handed over to Planning Office Assistants for formulation of Architectural Designs, Engineering Structural Designs and relevant layout.

The division has deployed a Planning assistant in-charge, a Planning Printing Technician, a Designs updater and an office assistant who are responsible for storage, archive, issuing of plans making copies, safeguarding of such plans formulated.

### 08.3 Layout Plans completed during 20160

	Project	Plan No
<b>Colombo District</b>	Imbulakanda Sri Sambuddhi Viharaya, Homagama – Preaching Stage	NPPD/ARCHI2016/West/Colombo/01
	Imbulakanda Sri Sambuddhi Viharaya, Homagama – MeditationChamber	NPPD/ARCHI2016/West/Colombo/01
	Sri Lanka Buddhist Centre - Moratuwa	NPPD/ARCHI2016/West/Colombo/02
	Nawagamuwa Paththini Dewalaya	NPPD/ARCHI2016/West/Colombo/05
	Borella Gothami Viharaya	NPPD/ARCHI2016/West/Colombo/06
	Piliyandala Richdelwatta	NPPD/ARCHI2016/West/Colombo/07
	Handagala Kanda Purana Gal-lena Rajamaha Viharaya	NPPD/ARCHI2016/West/Colombo/08

	Mundigala Aaranya Senasanaya, Avissawella (Ladies Hostal & Library)	NPPD/ARCHI2016/West/Colombo/09
	Sarvodaya “Vipassana” Meditation Center	NPPD/ARCHI2016/West/Colombo/13
	Kotahera Sri Rajagala Viharaya	NPPD/ARCHI2016/West/Colombo/14
<b>Gampaha District</b>	Dhanashala and conference hall of Meevitigammana Nalikaramaya Viharaya – Attanagalla	NPPD/ARCHI2016/West/Gampaha/01
	Purana Rajamaha paththini Dewalaya – Elakkala, Attanagalla	NPPD/ARCHI2016/West/Gampaha/02
	National Transport Medical Center - Gampaha Branch	NPPD/ARCHI2016/West/Gampaha/03
	Meditation center – Ma-bima Seewalee Viharaya	NPPD/ARCHI2016/West/Gampaha/05
	Preaching Stage (Dhamma Mandapaya) – Ma-bima Seewalee Viharaya	NPPD/ARCHI2016/West/Gampaha/05
	<u>Mahara Naranwala Sri Sumanakirthi Maha Pirivena</u> –Upgrading Dhana Shala, Conference hall and Shrine Room	NPPD/ARCHI2016/West/Gampaha/06
<b>Kalutara District</b>	Dodangoda Bombuwala Sri Subodhi Rajaramaya- (Dhamma Mandapa	NPPD/ARCHI2016/West/Kalutara/01
	Kithsiri Meven Rajamaha Viharaya - Pokunuwita	NPPD/ARCHI2016/West/Kalutara/02
	Sangawasa (Bikkhu’s Residence)	
	Meditation chamber Dhamma Mandapaya	
	Horana-Olboduwa Sri Jayawardhanarama Viharaya	NPPD/ARCHI2016/West/Kalutara/03

<b>Matara District</b>	Getabaruwa Rajamahaviharaya, Getabaruwa, Matara	NPPD/ARCHI2016/South/Matara/01
<b>Hambantota District</b>	Tissamaharama Sandagirikanda Rajamaha Viharaya	NPPD/ARCHI/2016/South/Hambantota/01
	Kataragama Sri Abhivanarama Maha Viharaya (Aligaala)	NPPD/ARCHI/2016/South/Hambantota/03
	Sacred Land - Kataragama	NPPD/ARCHI/2017/South/Hambantota/04
<b>Matale District</b>	Proposed multi-purpose building at Aluviharaya sacred land at Matale	NPPD/ARCHI/2017/Central/Matale/1
<b>Polonnaruwa District</b>	“Rajarata Novodaya”	NPPD/ARCHI/2016/North Central/Anuradhapura/05
	Rajamaha Piriven Viharaya and Lodge - Dumbulagala	
	Arch (Vahalkada) - Dimbulagala	
	Meditation chamber - Dimbulagala	
	Lavatory/sanitary unit at Somawathie sacred land	
	Lavatory/sanitary unit at Parackrama Samudraya, Polonnaruwa	
<b>Kurunegala District</b>	Landscaping plan for Sri Sasanalankara Maha Viharaya	NPPD/ARCHI/2016/North Western/Kurunegala/01
<b>Puttalam District</b>	Munneshwaram Hindu Temple	NPPD/ARCHI/2016/North Western/Puttalam/01
<b>Ampara District</b>	Ampara Vidyananda Maha Pirivena	NPPD/ARCHI/2016/Eastern/Ampara/01
	Arantalawa Buddhist Center – Lodge	NPPD/ARCHI2016/Eastern/Ampara/02
<b>Batticaloa District</b>	Pulukunawa Raja Maha Viharaya – Lodge	NPPD/ARCHI2016/Eastern/Batticaloa/01

<b>Trincomalee District</b>	Seruwila Mangala Rajamaha Viharaya – Sanitary Building	NPPD/ARCHI2016/Eastern/Trincomalee/01-1
	Seruwila Sacred Land Development Scheme	NPPD/ARCHI2016/Eastern/Trincomalee/01-11
	Seruwila Rest House- National Physical Planning Department	NPPD/ARCHI2016/Eastern/Trincomalee/01-111
	Dhamma Shala (Preaching Hall)	NPPD/ARCHI2016/Eastern/Trincomalee/01-iv
	Seruwila Tourist Guest House- National Physical Planning Department	NPPD/ARCHI/2016/Eastern/Trincomalee/02
<b>Kegalle District</b>	Preaching Chamber of Raja Maha Viharaya - Wattarama	NPPD/ARCHI2016/Sabragamuwa/Kegalle/01
	Main access road and landscaping for beautification – Wattarama	
	Proposed vehicle park -Wattarama	
	Kotavehera Sacred Land Scheme - Dedigama	NPPD/ARCHI2016/Sabragamuwa/Kegalle/02
	Kegalle-Medagoda Siddha Pattini Dewalaya	NPPD/ARCHI2016/Sabragamuwa/Kegalle/03
	Aluthnuwara Dedimunda Dewalaya	NPPD/ARCHI2016/Sabragamuwa/Kegalle/04
<b>Rathnapura District</b>	Rathnapura Saman Dewalaya	NPPD/ARCHI2016/Sabragamuwa/Rathnapura/01
	Meditation Center - Sooriyakanda	NPPD/ARCHI2016/Sabragamuwa/Rathnapura/03

In addition to the above, the Department has contributed Architectural consultancy services for the activities listed hereunder;

- Provision of Architectural Observation Report for the building constructed for Regional Health Services under the project titled “Pibidemu Polonnaruwa”
- Participation at Tender Board Functions, contributing Architectural Observations for the construction activities carried out by the Ministry.

## **09. Performance of the Accounts Division**

### **09.1 Objectives of the Accounts Division**

Implementation of effective and efficient Financial Management of the annual budgetary provisions for the department in compliance with accounts circular, financial regulations, establishment code and rules and regulation of other circulars.

### **09.2 Service**

1. Payment of salaries, wages and other remunerations for the staff of the department and the staff of the other projects
2. Preparation of monthly accounts summary with regard to the financial transactions occurred and submitting the same to the treasury
3. Preparation and submission of Annual Account
4. Procurement and storage of goods that are required by the department and other affiliated establishments
5. Asset Management
6. Submission of relevant documents to the Auditor General and attend audit queries
7. Granting loans and recovery under the “Advance – “B” Account.

### **09.3 Staff**

The aforementioned duties and activities accomplished by an accountant, nine (09) Management Assistants and two (02) Office Assistants who are deployed under the direct supervision of the Chief Accountant.



#### 09.4. Activities accomplished by Accounts Division in 2016

1. Payment of salaries, other statutory payments, wages and all other expenses for the staff of the department and other project offices. Payment has been made in pursuant to the circulars.
2. Preparation of relevant monthly summary for the financial transactions and submit them to treasury on prescribed dates
3. Preparation and submission of Annual Accounts: - Appropriation account has been prepared and submitted on 28.03.2013. This account has to be submitted prior to 30<sup>th</sup> of April as per the Financial Regulations of Advance B Account. Department has submitted this on 28.03.2016.
4. Procurement, distribution and storing of stationeries that are required for the department and other project offices
5. Asset Management, Survey on annual inventory
6. Submission of document to the Auditor General for Auditing: Answers and clarifications for the Audit Queries raised from Auditor General prior to the prescribed date.
7. Granting and recovery of loans under the Advance B Account as per the relevant circulars and establishment code.

#### 1 . Expenditure on staff salaries and other associated provisions -2016

Expenditure Item	Estimate in year 2016 (Rs.)	Transfer of FR 66/69 (Rs.)	Supplementary Estimate (Rs.)	Total provisions (Rs.)	Total Expenditure (Rs.)
Salaries	130,000,000	6,500,000	-	130,000,000	127,329,776

#### 1 . Expenditure against the provision of each other recurrent expenditure item -2016

Expenditure Item	Estimate in year 2016 (Rs.)	Transfer of FR 66/69 (Rs.)	Supplementary Estimate (Rs.)	Total provisions (Rs.)	Total Expenditure (Rs.)
Other recurrent cost	50,950,000	193,955	-	50,950,000	48,597.104

--	--	--	--	--	--

## 2. Revenue Report of the Year 2016

Description	Original Estimate (Rs. Million)	Revised Estimate (Rs. Million)	Revenue of 2016 (Rs. Million)
2002-01-01	1.4	-	1.89
2002-02-99	1.3	-	1.23
2003-99-00	0.5	-	0.22

## 3. Expenditure against the provision of each capital expenditure item -2016

Expenditure Item	Estimate in year 2015	Transfer of FR 66/69 (Rs.)	Supplementary Estimate	Total provision	Total Expenditure
311-1-1-0-2001	200,000	-	-	200,000	76,054
311-1-1-0-2002	150,000	-	-	150,000	82,229
311-1-1-0-2003	750,000	-	-	750,000	750,000
311-1-1-0-2102	100,000	4,000,000	400,000	500,000	485,893
311-1-1-0-2104	50,000	-	100,000	150,000	112,200
311-1-1-0-2401	350,000	-	-	350,000	350,000
311-1-1-0-2502	7,000,000	-	-	7,000,000	6,607,931

## 4. Limit of the Advance Account of the Public Officers & Actual figures - 2016

Subject No - 311011

	Ceiling	Actual Value
Maximum Debit Limit	12.000,000	11,571,817

Minimum credit limit	7,000,000	8,132,154
Maximum Debit Balance Limit	60,000,000.00	33,958,126

Source – Departmental Source