

ශ්‍රී ලංකා රූපවාහිනී සංස්ථාව

இலங்கை ரூபவாஹினி கூட்டுத்தாபனம்

Sri Lanka Rupavahini Corporation



P.O.Box : 2204, Independence Square, Colombo 07, Sri Lanka

Tele Phone : 011 250 1050 / 011 259 9505

Fax : 011 258 0131

E Mail : chmn@rupavahini.lk

Website : w.w.w.rupavahini.lk

The Honorable Minister of Media and Information,

We, the Chairman and the members of the Sri Lanka Rupavahini Corporation, hereby submit the Annual Report for the year 2022 under Section 14 (1) of the Finance Act No.38.

The account statements are also attached.

On behalf of the Sri Lanka Rupavahini Corporation

W.B. Ganegala

Chairman

Sri Lanka Rupavahini Corporation

Independent Square

Colombo 07

Vision

Accomplishment of the national responsibility as the pioneering TV Channel in the field of Mass Media in Sri Lanka

Mission

Dissemination of timely rich information including knowledge entertainment, education and other high quality audio – video contents using state of the art technology to meet the expectations of the viewership

Goals

Improving the attractiveness, variety and meaningfulness of television programmes through changes to the format of the programme.

Reaching viewers more effectively using new techniques.

Improving the physical infrastructure and productively developing the human resources of the institute.

Introducing new means of generating income for the institution.

Amending the statutory framework of the institution to suit the competitiveness.

Content

Message from the Chairman	311
Director Board	312
Senior Management	313
Honourable Achievements	314
Programme Division	317
News and Current Affairs Division	337
Production and Service Division	343
Engineering Division	353
Marketing Division	367
Administration Division	370
Finance Division	393
Statement of Directors' Responsibility	394

Financial statements	395
Audit Report	456

Message from the Chairman

Challenges Must be Overcome

The Sri Lanka Rupavahini Corporation is known as the National Channel or National Television by the general public and the media industry of our country. This is because of the pioneering national media mission that the Sri Lanka Rupavahini Corporation has accomplished in the past 41 years and we believe it is because of love and unlimited respect shown to her by the audience in our country.

As a government owned media channel we are happy with the people friendly social care that National Rupavahini is involving in while protecting the Sri Lankan identity and cultural values while facing an intense commercial competition from a bunch of other private channels.

In terms of the use of modern technical communication tools and knowledgeable and experienced creative human resources, everyone knows that National Rupavahini is still at the forefront then and now, which is reflected in the many national and international awards received for creative programmes produced and broadcast during the period under review.

In an era when the entire economic structure of the country has collapsed, its severe negative impact is not felt by the national television. It is extremely challenging to run a national institution owned by the government without any government funds. However, the efforts of the staff to overcome such obstacles and move forward to elevate this channel to its rightful place should be commended. The strategic plan for that has been identified by the Board of Directors. The report contains performance and targets for the first year of the 2023 to 2025 Compact plan. Our ambition is to be 2023 a year where our problems by ourselves. We highly appreciate the consonant blessings from all the public and private sector sponsors and the entire audience who are with us in this responsible duty. The support we receive from the Honourable Minister of Mass Media and the its staff including the Secretary is our strength. In spite of the various difficulties that have to be faced temporarily, the commitment of all the staff including the employee unions who are lining up to win the sole purpose of Rupavahini is also a great courage for us.

Self strength is our own strength and let's move forward without giving up.

W.B. Ganegala
The Chairman
Sri Lanka Rupavahini Corporation
15.03.2023

Director Board -2022

1. W.B. Ganegala - The Chairman SLRC
2. Attorney -at- Law – DeepalChandrarathna -Chairman- National Film Corporation
3. Mr .Hudson Samarasinghe - Sri Lanka Broadcast Corporation
4. Prof. D. M. Ajith Dissanayake- University of Keleniya
5. Prof. Chaminda Rathnayake – NSBM University
6. Mr RakithaAbeygunawardane- Attorney-at- Law
7. Mrs P. K. S. Subodhini - Additional Secretary() Ministry Of Education
8. Mrs R. J . Aabdeen – Director- Finance Division
9. Mr Ruwan Palitha Sat Kumaara- Additional Secretary (Ministry of Mass Media)

Senior Management 2022

1.The Chairman - Mr .SonalaGunawardana (up to 14.06.2022)

Mr Asanga Jayasuriya(From 15.06.2022 to 25.07.2022)

Mr W. B.Ganegala (From 26.07.2022)

2.Director General- Mr Jayampathi Bandara Heenkenda (up to 14.02.14)

Mr B. Wijayaratne (22.02.2022- 24.08.2022)

Mr. AjanthaSenevirathna (25.08.2022- 15.12.2022)

Director General (Acting) - Mr.E. M. S.B Jayasundara (16.12.2022.23.12.2022)

Director General - Mr Asanga Jayalath(From 23.12.2022)

3. Deputy Director General (Administration) - Mr Sunil Dissanayake (Up to 10.11.2022)

Deputy Director General (Administration) - Mrs S.D.N. N. Jayasena (17.11.2022)

Acting 30.11.2022)

4. Deputy Director General (Programme)- Mr. SumedhaAthulasiri

5. Deputy Director General (Engineering) (Acting) – Mr D. M .K. Dasanayake

6. Director (Production Service) - Mr Palitha K. Wijesinghe

7.Chief Engineer - Mr. D. M. K. Dassanayake

- Mr. B. S. P Perera

8. Chief Accountant - Mrs. A.H. E. R. P Edirisinghe

9. Director (Sports) - Mr. Vijaya Dissanayake

10.Director (Educational Programmes) Acting- Mr T. M. Chandrsiri

11. Director(Variety of Programmes) - Mr. Chandana Senevirathna (22.04.2022)

12. Director (Nethra) -Mr. Nilar N Cassim

13 Director (Channel Eye) Acting - Mr. Sanjaya Indra Kumar (16.03.2022)

14.Director (News and Current Affairs) Acting – Mr Indika Maarasinghe (up to 23.10.2022)

Mr. ThilakMahagama (24.10. 2022)

15.Director (Marketing) Contract - Mr. T. U. Lankathilaka

Honorable Achievements

Programmes Division

Drama Unit

- New Year single episode drama “AlhaleKirabath” was selected for 2022 Input International Television Conference held at Barcelona in Spain by the jury.
- New Year single episode drama “AlhaleKirabath” was officially selected for **One Earth** 2022 International Indian cinema held in India for Competitive Section in Short Film by the jury.
- New Year single episode drama “AlhaleKirabath” was officially selected for representing the International Awards Ceremony in Short Film Segment “ Black Cat “ held in Bolivia in 2022 by the jury.
- New Year single episode drama “AlhaleKirabath” was officially selected for representing the International awards Ceremony in Short Film Segment held in “Cefalu” in Italy in 2022. By the Jury.

Educational Programme Division

Education Service Unit

- Mrs. DeikaKumarasinghe was nominated for the Best EducationalProgrammeas ” Nana Mihira” in 2022 at Raigam Awards Ceremony.

Documentary Programme Division

- The programme Covid 19 – Mission directed by Mr. Chandana Senevirathna was awarded as the Best Current Affairs Programme.
- The programme “ArumaPurudaRodaHathara “ was nominated at Raigam Awards which was produced by Mr. Chandan a Senevirathna and Mr NamalSooriyabandaara in the year 2021.
- A programme proposal proposed by Mr. Lasantha Rumeschan was selected for finals in Japan Prize 2022 .

News and current affairs section

Domestic/Foreign Awards and Recommendations received in the year 2022

- Best Investigative News Award in South Asia - RDGB at South Asia International Business Excellence Awards 2022 held in Dhaka, Bangladesh. Menikdiwela (Associate Producer)
- South Asia Economic Development Strategic News at the 2022 South Asia International Business Excellence Awards held in Dhaka, Bangladesh Award- R.B.G.B. Menikdiwela (Associate Producer)
- Awarding the Documentary Short Film "Para Kaya Akte" at the "Tokyo Docs" 2022 International Documentary Short Film Awards - NishadiRuwanmali (Producer)
- 2022 RaigamTeles - Nominations for Best Television Development Feature of the Year Being "Thissapura College Volleyball Team" - BuddhikaGamlath / SurepiGunasekara (Associate Producer)
- 2022 RaigamTeles - Best Tamil News Anchor Nomination - Vijay Abnandan

English/ Foreign News

- Outranking 32 countries in 2022 Asia's best news operation Received the AVN Director's Award.
- Awards for Best News Contribution in Asia Pacific in May and July duality.
- Recommended for the best breaking news contribution in the region in 2022,
- Award for the best contribution to climate change and environmental protection in the region in 2022

Dubbing Unit

Awards

Best Kids Program – Emmy Yummy” – Raigam Awards 2021

Best Animation - “Inflated Frog” - State Awards 2021

Nominated

Best Animated Program of the Year - "HTDT" - Raigam Awards - 2021

The best animated program of the year. "SasaraKinnaravi" - Raigam Awards - 2021

Evaluation of participation in foreign awards

Emmy Yummy Selected as PRIX JEUNESSE INTERNATIONAL 2022 Media Bar programme (Germany)

Programmes Division

General Programmes

Drama Unit

Drama Unit Objectives

- As pioneers in the field of tele- drama, which is a popular part of daily aired television programs, in order to develop the audience's taste while protecting the standards of tele- drama, creating high- quality one- act and performance tele- drama, introducing as many new artists and new creations as possible to the field (actors, cases Designers, Writers)
- Arts based on television drama and stage drama. Cinema is a medium
Pioneering the development of simultaneous fields.
- Working to bring the art of television drama to the international level in the future.
- Providing national level services through coverage of State Drama Festival, State Film Festival, State Cultural Festivals, National Festivals, Live Broadcasting and other art performances.
- To train new artists who join the television corporation and those who are expected to be trained and guided by the television corporation to enter the media industry.
- Creation of tribute programs for veteran artists.
- Enlightening and leading the TV audience through the telethon.

The drama unit operates under an assistant director and employs 94 senior producers, 04 producers and one assistant producer. One Senior Management Assistant is also employed.

Tasks and projects specifically undertaken in the year 2022

- Production and broadcasting of 03 single teleplays "Sita Nivana Katha",
- Producing and broadcasting the one- year teleplay "Karalakada"
- Produced and aired the Vesak teleplay “Urumakaraya”.
- Produced and aired the Christmas soap opera "Lakarum". Producing and broadcasting 20 "Chessagiriya" programs.
- Produced and Telecasted 20 programs “Wssagiriya”
- Produced and telecasted 16 programs "Our Song".
- "Sunday Goodbye" programs. 12 Broadcasting live
- "HadawatheHathaliha" anniversary program produced and broadcast,
- Producing and broadcasting 36 “Ru- Tube” programs.
- Produced and aired 52 “Ru- Tune” programs.
- Live streaming of Kataragama Perahera
- Produced and aired 16 programs of "The Big Question",
- Production and broadcasting of 32 programs “King KusalaGaveshi”

- Production and broadcast of 32 "TV Best Ten" programs
- for 112 students interested in acting from all over Sri Lanka Acting Academy course starting from October 2022,

Film and Dubbing unit

A unit that produces foreign and local programs dubbing, subtitling, seasonal animation programs and children's programs. The dubbing unit consists of 3 dubbing rooms, a subtitling unit and an animation unit.

Number of Employees in the unit

Assistant Director (Assign Duties)- 01

Senior Producer - (01

Assistant Producer – 01

Production Assistant – 01

Animator - 04

Media and Animators - 03.

Dubbing and Subtitling Assistant - 01

Programs produced by the unit in the year 2022

Program type	Number
Dubbed programs	06
Subtitled programs	05
Children's programs	02

Animation programs	04
other programs produced	02
Programs archived for rebroadcast	15

Details of projects undertaken by the unit for the betterment of the corporation

Running a YouTube channel called “Rupavahini animationstudio” and related to it

Making animations and providing the corporation with a monthly income of Rs 75,000 through this YouTube channel,

Design and information required for social websites maintained by the television corporation to promote the television brand by providing,

To develop the 8.00 pm airtime of the popular Korean tele- drama acquired under the "RAPA" Korean programming project, broadcasting with Sinhala dialogues,

Steps taken to improve the quality to facilitate the work of the unit and the benefits achieved

Upgrading the system so that the programs produced by the dubbing unit can be forwarded by the network system of the unit to the main control room for broadcasting in digital media and the programs can be easily retrieved and archived in the library.

Out of that, the officers of the unit have been able to manage time and not spend money on cassettes.

By creating a network system within the unit to exchange documents, time management has been made easier for officers.

Sports Programmes Unit

Sports Unit

While the Sports Unit is a unit of the programme division, 9 officers including Director (Sports), two Senior Producers, four Co- producers and Assistant Producer are employed on assignment basis. Also, the Sports Unit carries out various sports related activities to cover sports matches both locally and foreign.

Moreover, the following special programmes are telecast weekly by the Sports Unit.

- The sports entertainment programme is produced on the basis of local and foreign sports events and is telecast.

- The Eternal Light of Hope

In addition the programmes broadcast live

- SukeeDeegayu 2022
- Zimbabwe Tour of Sri Lanka

- GuwanHamudaPapediSawariya 2022
- Women's Ru Sixes 2022

- NugaSewana
- Australia Tour of Sri Lanka
- Road Safety Legends Cup 2022
- Welcome of Asian Netball Champions
- FIFA World Cup Iconic Moments
- Sri Lanka Air Force Open Squash
- DSI Super Sports Volleyball 2022
- Prima Under15 Final 2022
- Sri Lanka Can 2022
- SLT Mobitel School Cricketer Awards 2022
- Mercantile Volleyball 2022

The Sports Unit has telecast the sports programmes with an air time of 1752.3 hours. The Channel Eye telecast an air time of 1705 hours while Rupavahini telecast 47.3 hours.

Music Programmes Unit

The main intention was to give a positive boost to public enjoyment by producing and broadcasting television programmes representing various genres of the Sri Lankan music industry. With the sole intention of that the music programmes were implemented throughout the year 2022 under an Assistant Director with two Senior Producers , two Assistant Producers and a Management Assistant are employed. The undermentioned programmes were produced in 2022.

- ‘ Sihinayaki Re’- Sunday from 10pm to 12.30pm(Up to July 2022)
- ‘Music Chart Show’ – Saturday 10a.m to 11.00a.m
- Creative Direction of the New Year Programme -2022
- Production of Tuesday NugaSewana Programme

Youth Programmes Unit

The Youth Programme Unit of the Sri Lanka Rupavahini Corporation produces various programmes both recorded and live on a weekly and monthly basis. In fact, Youth Programme Unit also contributes to the producers of collectively produced programmes.

This unit consists of Unit Head ,three Senior Producers two Producers and a Management Assistant.

The following programmes were produced and telecast in the year 2022.

Name of the Programme	Number	Air Time	Recorded	Live	Content
Sunday Ayubowan	12	Second Sunday of every month		Live	Consists of Important Current Affairs and creative elements during the week

Leisure Time	50	Saturday from 15.00 to 16.00		Live	A program featuring entertaining chats featuring popular youth singers and dancers
Fashion	50	Saturday from 16.30 to 17.00	Recorded		A programme on youth fashion
Vision	24	Saturday from 12.00p.m to 13.00 p.m	Recorded		A programme on positive thinking
Sadakada	12	Every Poya Day From 19.30pm to 20.00	Recorded		An investigative reporting programme on archaeological and historical temples
20 Minutes	70	All six days from 18.30 to 18.50 a.m		Live	A program that analytically presents an important news of the day
WasanthayaObai	01	Special New Year Programme(2 hours -14 th of April)		Live	

- In fact, contributed in the programme, 'Rasawith' which was produced in teams
- Carrying out an awareness programme about Rupavahini Corporation for school children from all over the world.
- Giving information and ideas for the line –up of the programmes of Rupavahini Corporation.
- In addition, providing support for the measures that can be taken for the development of the Rupavahini Corporation.

Event Management and Programme Production Unit

The Event Management Unit was established to manage the events produced by the Corporation. A large portion of Sri Lanka's total advertising volume is allocated to events. Various events are organized by the Rupavahini Corporation.

This unit also plans and manages the event as it is related the same field. Currently, as decided from time to time the planning and production of various events done by our producers in the unit. It also includes developing concepts for events and making related estimates.

Two producers ,one Assistant Producer and Production Assistant are employed in this unit.

The programmes produced in 2022

- Sadharuu Yamaya
- Forward Focus
- Sunday Ayubowan Programme
- Avurudu Kumariya Programme

In addition, the producers were involved in the service requirement for other production activities.

Religious Programme Unit

Buddhist programmes and programmes related to projects are produced by this unit.

This unit consists of Deputy Director along with Senior Producer, Co -producer and Senior Management Assistant.

Conducting social welfare programmes with parallel to the programme ‘SaddarramaWarsha ‘ in 2022 by this unit.

Programme Presenting Unit

The Program Presenting Unit under an Assistant Director is involved with lining up the programmes in all three streams. Balanced programmes are aired on all three channels that the whole family can watch together with an understanding of the programmes aired on competitive channels. To carry out these task , a staff of 15 members are employed on duty cycle system to maintain the daily broadcasting activities.

The line-up for broadcast takes place in several stages. Firstly, the relevant program has to be documented. Dates and times of programmes to be broadcast are decided at programme planning meetings. According to the notification of the Chairman, the Director General, the Heads of the programme departments are documented as above. Then, a programme description sheet is handed over to the submission unit by the producer of the scheduled programme. This document also includes the name of the programme, broadcasting time, date and time of broadcast, type of the programme and the signature of the Heads of Department along with the approval. This information is computerized. The producer will then handover the cassette tape related to the programme to the library. The officers of the Presentation Unit will collect the cassette from the library and return it to the library after broadcasting. Also, programmes are sent to the main control room via (Rapa)medium. On special occasions trailers are produced related to the programmes and the trailers received from the producers are also pre- monitored and given for broadcasting. Tele dramas and external programmes are pre- screened and unfit parts are removed for broadcast. Furthermore live tapes are also produced for the programmes. In addition to this the Chairman, on the instructions of the Director General provides special air time using the daily schedule and air time is provided for sponsors on the request of the Marketing Division. In case the running time of the producers’ programmes is less, our unit also maintains the air time in a balanced manner by using short trailers.

Also live action tapes are produced for programmes and in special cases pre-campaign tapes are produced.

The programme Presentation Unit has become a witness to the history of the programmes of the Rupavahini Corporation by maintain a detailed register of the programmes telecast since 1982 up to date.

Programmes Administration Unit

In the year 2022, the following files have been opened by the Programme Administration Unit.

Division	Number of Files opened
General Programmes	432
Educational Programmes	261
News	179
Channel Eye	298
Commercial	22
Total	1192

Educational Programmes

Three units are existing under the Director in Educational programmes.

- Education Services Unit
- Documentary Programme Unit
- Children's Unit

Education Service Unit

Among the units one of the main units is the Education Service Unit. Since the inception of the Rupavahini Corporation, the Education Service Unit has a unique position. The main objective of the Education Programme Unit is to produce and broadcast formal and non-formal educational programmes to help the education of Sri Lankan children through media. In order to achieve the Rupavahini Corporation has been playing a unique role in lighting the lights of Sri Lankan children by producing and broadcasting educational programmes in various fields for almost four decades from its inception to 2022.

In addition to the formal programmes since 2000, the Education Unit has also contributed through programmes to raise the financial status of the institution, such as informal and magazine, live programmes. Conducting educational care programmes and conference series to help the education of children of remote areas are some of the outstanding tasks carried out by the unit so far.

It is special that the programmes produced by the Education Unit have even won international awards. The first programme to receive the Japan International Award in the Education Unit is the Akshara Puranaya produced by Mrs Niranjala Weerakkody, an A/L programme, an intertidal zone query produced by Chandra Jayatillake. The Best Award received for on protection of indigenous minorities-2015 (AIBD).

The Education Unit was able to win local accolades until the year 2022.

The Social Care Programmes carried out in 2022

- JathikaPaasala is also a popular programme series which telecast from 4pm to 5pm on week days among the students who face Ordinary Level Examination. Five main subjects have been selected for the series of programme for all five days. History, English,
- Science, Maths and Sinhala have been selected respectively on Monday Tuesday, Wednesday, Thursday and Friday. It is a special feature that children can watch all these programs by broadcasting them on Rupavahini's You Tube Channel.

Nana Mihira scholarship program series is the most popular program series among the girls appearing for the 5th year scholarship in the year 2022. The series of programs was also broadcast live on the National School You- Tube channel.

Project programs carried out by the Education Unit to improve the financial status of the Corporation

Education and many programs for raising the financial status of the corporation and social welfare The unit has implemented till the year 2022.

It has been implemented since 2011 and by 2022, the Puchi Ape Nana Mihira sweet question and answer series, which is popular among children, teachers and parents, will take a major place. In the year 2022, this project will generate Rs. A net income of 14 million was earned for the company.

By selling the question and answer book, it has helped the development of the corporation by providing a helping hand to the examination of the girls appearing for the scholarship as well as popularizing the educational programs of the television corporation among the people.

Along with this series of programs, 15 Sinhala Scholarship Seminars and Duvida will be held to cover the girls appearing for the scholarship examination in Sinhala and Tamil, especially in the North East.

7 scholarship conferences were held across the country. The attendance of thousands of boys for this one conference reflected not its popularity. The series of Dravidian Conferences held especially in the North and Eastern Provinces was special in that the television corporation was highly appreciated by the children and parents as well as the Dravidian people.

Also, the RividinaArunella Agricultural Gardening Program series produced by the Education Unit started in the year 2002 and the Golden Harvest Festival planned along with

the Island wide Gardening Competition was a great help to create a poison free garden among the Sri Lankan audience. It is also special that this series of programs implemented in accordance with the agricultural policy of the government has won 08 local and international awards.

Documentary Programmes Unit

This unit has been established in the education sector since the beginning of the corporation. Although considered internationally, the Documentary program unit has a special place. Documentary programs, magazine programs, travel Documentary programs, quiz programs, live programs with cultural significance, Documentary programs for government institutions, etc. are produced by this unit. Sri Lanka Rupavahini Corporation's first international channel was also provided by the Report and Entertainment Unit. It was for Sisira Suraweera Nishpa Black Diamond Report Program in 1988. From that time till today, the producers of Documentary Unit have won many awards for their documentary programs at local and foreign festivals. Among the television programs, many popular programs of the country were created by these producers. Urumaya, Rasa Kalasa, NavaiYaiPaha, Sarisara, Aruma Vada Gaha Four, Dhara, Ananda Ratri are prominent programs among them. In addition to S, this unit also records and broadcasts the speeches of political candidates in the presidential and parliamentary elections.

Managed by an assistant director or executive producer, the unit consists of four senior producers, two producers, an assistant producer, a production assistant, a clerk and an office assistant.

From the unit's executive producer to the two production assistants, all producers must create programs for the weekly broadcast of Dhara Report Samir. But a covid-19 pandemic resulted in minimal production of programs due to the corporation's financial situation, in addition to the

half- hour Ayuboweveva Health Magazine program airing on Sundays. The amazing Four Wheeler Magazine is produced and is a half- hour show airing on Sundays at 9.30pm. The Catholic and Christian program called Good News and Good News is broadcast once a month on the last Sunday evening at 06 00 and two programs are produced on Sunday Ayubowan. The three production assistants in the unit contribute to the production of the producers.

The report program unit also oversees the broadcast of Gurugedara education programs initiated in response to the Kovic epidemic. It airs 16 hours a day on Channel I and Thra. The show went off air in February. It was a project that earned the corporation nearly 21 million.

Documentary programs related to the President and the Prime Minister are also produced by the Documentary Program Unit. With the aim of improving the financial condition of the corporation, the producers of the unit went to various government institutions and presented projects for the production of programs and achieved successful results this year as well.

Two new programs were initiated this year by the report unit at the request of the management. The Sahitya Rasavitha program, which was started in conjunction with the book fair held for Sahitya Month, was then held weekly on Sundays at 1:00 am. Broadcast from 10.00 to 11.00. It is a commentary on a book of literature. It aired weekly on Thursdays between 9.30pm and 10.30pm. This year's Sinhala New Year program was prepared by the report program unit. The Hindi Language Program of Aster School Program, which was started by the Education Program Unit in the year 2022, is prepared by the Report Program Unit.

For a long time, a problem for the producers was the minimal facilities for program editing and the lack of editors. As a remedy for this, an editing suite was taken to the record unit and it was a successful change in the corporate culture of the television corporation. Currently, the producers themselves edit their programs. For this they were given training by the unit head and about 95% of the editing problems of the unit have been solved.

Short- term employment of students coming from universities for training .They get training as well as the ability to get services at a minimal cost to the organization It has been shown that This has been successfully adopted by this unit.

Children's Programmes Unit

Since the inauguration of the Sri Lanka Rupavahini Corporation on 15.02.1982, the Children's Program Unit has been a program unit established within the Corporation, and thus for 40 years, it has been a leading contribution to providing education, improving knowledge and entertainment to many generations of children in Sri Lanka.

Although it was the most successful national television channel in Sri Lanka at the time of its inauguration, The Child has been seriously commoditized by a large number of for-profit private television channels and modern social media.

In such a problematic social environment, the Rupavahini Corporation Children's Program Unit, which is engaged in a national role, is bound by the absolute responsibility of "creating a positive future citizen" who overcomes a thousand obstacles and is constantly changing in the process of making it a reality.

Designations and Number of Employees of the Unit

- Unit Head -01 (upto 05.05.2022)
- Senior Programme Producer -02
- Programme producer -02
- Assistant Producers -03
- Production Assistant - 01
- Management Assistant -01

Programmes Produced by the Children's Unit in 2022

Name of the Programme	Number of Programmes
PaataPaata/ShanidaSadaweWarnawath Lama wiya	40
PunchiApithRasataUyamu	34
Children's Day – National Programme	01
Sawanak Ras- Poya day Children's Programme	04
Muthuhara Children's programme	52
Ape Paya	40
Covid 19 Special Live Programme	01
9 minutes	15
Children's News	20
Daham Pathma	04
Naada Ranga Children's Musical Programme	24
SinduKochchiya	52

Further,

- Two sponsorship programmes related to nutrition and World Food Programme
- The Children's Unit has produced ,'Mage Bath Amma' a sponsorship programme related to woman and nutrition in 2002.

Channel Nethra

Most of the educational programmes were telecast in Channel Nethra in the time of Covid. Telecast of the Tamil programmes as the National Tamil Channel in 2022. The following programmes were produced in 2022 in Channel Nethra.

No	Programme	Duration	Method of Telecast	Number of Programmes
01	WannakamNethar –Discussion	2 hours	Week Days	162
02	Hit By Hit(Lunch Time) (Live)	1 hour	Week Days	101
03	Lunch Time Music (Live)	1 hour	Week Days	73
04	Purnami- Poya Day Special	2 hours	Monthly	09
05	Salaram- Magazine Face Interview	1 1/2		33
06	Brahma Raashiyam-Wasthu-Live	30 minutes		06
07	Maanwasam-			26
08	Amarkalam-Discussion -Live			38
09	PaandavaJothidam-Live	½ hours		18
10	Nethra 9.30- Musical- Live	1 ½ hours	Weekly(weekend)	34
11	VaadaiKaatru- Musical-	1 hour	Weekly(weekend)	09
12	Sugavalvu-Healthy	30 hours	Weekly(weekend)	04
13	Music Cafe	1 hour	Weekly(weekend)	07
14	Awareness- Documentary	1 hour	Weekly(weekend)	02
15	KatkaKasadara Educational	1 ½ hours	Week days	08

16	Bharatham - Classical	30 minutes	Weekly (Weekend)	01
17	ParavahamMagazinalDisscussion-	1 ½ hours	Weekly (Weekend)	02
18	Malligai – Musical- Recorded	30 minutes	Weekly (Weekend)	04
19	Thaimai- Health Programme	1 hour	Weekly (Weekend)	01
20	Health Programme	30 minutes	Weekly (Weekend)	10
21	Vision Care Health Programme	30 minutes	Weekly (Weekend)	01
22	NoyatraVaalu	1 hour	Weekly (Weekend)	12
23	SowbakyamanaThesam	1 hour	Weekly (Weekend)	09
24	ThagavalPettagam- Political	1 hour	Weekly (Weekend)	10
25	Special Political Programme	1 hour	Weekly (Weekend)	01
26	Savaal- Political Programme	30 minutes	Weekly (Weekend)	12
27	Makkal Medai	1 hour	Weekly (Weekend)	09

Special Day Programmes

Number	Programme	Duration	Method of Telecast	Number of Programmes
01	Thai Pongal Festival-Live	1 ½ hours	Annually	01
02	Thai Pongal Greetings (Live)	1 ½ hours	Annually	01
03	Thai Pongal- Special Discussion	30 minutes	Annually	01
04	Hindu Tradition- Sinhala and Tamil New Year	30 minutes	Annually	01
05	April New Year Musical	3hours	Annually	01
06	April New Year Special Programme		Annually	01

07	Nallur Annual Festival-2022	4 hours	Annually	01
08	Nava Rathri Festival -2022			01
09	Christmas Greetings- Special	3 hours	Annually	01
10	Classical Dance- Christmas Special	1 ½ hours	Annually	
11	Special Debating Programme	4 hours	Annually	03
12	Deepavali Samyal- 2022	1 hour	Annually	01
13	Deepa Mangalam- Deepawali	3 hours	Annually	03
14	Deepa Jothi- Live	4 hours	Annually	01
15	NachathiraSanthippu	1 hour	Annually	01
16	Christmas Day Midnight Mass 2022	1 ½ hours	Annually	04
17	Christmas Day Special Programme	4 hours	Annually	01
18	Christmas Celebration 2022	1 ½ hours	Annually	01

Muslim Programmes Unit

Programs produced in the year 2022

Number	Programme	Duration	Method of Telecast	Number of Programmes
01	Nethra Express- Live	1 hour	Daily	07
02	Ifthar- Recorded	30 minutes	Annually	30
03	Festival Programmes- Recorded	2 hours	Annually	03
04	Kavichaamar- Poet Corner	2 hours	Annually	03

Channel Eye

Channel Eye started broadcasting in April 1999 as the second channel on Rupavahini. In August 2000 it became as the Channel Eye while pioneering in all three pillars of education, youth and entertainment. The channel produces a wide range of programmes and broadcasts sports events. In the early years of Channel Eye it aired documentaries on the discovery channel.

Channel Eye is the English Channel of the Sri Lanka Rupavahini Corporation, which produces and operates English programmes for English viewers. The programmes are produced for general audience, youth and children. Live recording and telecasting of recorded programmes on specific time slots to suit the needs of the general public. English programmes are produced in the fields of on discussion, magazines, entertainment, sports for the diverse audience. Programmes are produced in the morning for the needs of the general public both locally and internationally. Trending business

news and law and order, entertainment and discussions based on Buddhist teachings are produced and aired in the evening. It is the only English channel with wide coverage and has a unique position in studio productions.

Staff of the Channel Eye

Channel Eye operates under a Director and three Assistant Producers and one office Assistant.

Programmes Telecast on Channel Eye in 2022

Programme	Day of Broadcast	Time of Broadcast	Nature of the Programme
Eye Shuffle	Monday	20.00-20.30	Musical Programme
Café Classic	Tuesday(Every Week)	20.00-20.30	Musical Programme
Business Today	Wednesday (Every Week)	20.00-20.30	Discussions with business information
Eye Med	Thursday (Every Week)	20.00-20.30	Discussion on health information

Sri Lanka Rupavahini Corporation – Annual Report - 2022

Cine Mag	Friday (Every Week)	20.00-20.30	Magazine program with information about movies
Local Hunt	Saturday (Every Week)	20.00-20.30	Chart Show
Law and Order	Sunday (Every Week)	20.00-20.30	Discussion on Law
Path to Freedom	Every Poya day	20.00-20.30	A talk show aired on Poya days

Number of Programmes telecast weekly - 07

Number of programmes telecast monthly -29

News and Current Affairs Division

Considering other television channels, our main objective is to provide true and correct information to the subscriber without delay, taking into account the current society. Especially. Despite the emergence of private channels based on various commercial objectives in today's society, National Television is constantly fulfilling the national responsibility of providing accurate and truthful news to the people.

The news and current affairs division mainly consists of three other units.

- News unit
- Current Affairs Unit
- News camera unit

In the year 2022, the total number of employees in the news and current affairs department is 106.

(This number changes from time to time due to transfers.)

- News Unit-68
- Current Affairs Unit-13
- News Camera Unit-25

News Unit

According to the nature of duties of the news unit, it consists of several sub-units.

- Tamil News Unit
- English News Unit
- News Media Image Unit
- News web unit

Tamil News Unit

The unit consists of a unit head, a news editor, two assistant producers and two production assistants. This unit telecasts Tamil news at 07:50 PM. This unit carries the Tamil news bulletin including the news received through local reporters as well as the news elements made by the producers. Relevant news elements are also provided for the Sinhala news release and the duties are handled by a very minimal number of employees

English News Unit

The unit consists of an assistant director and two assistant producers and four production assistants. This unit regularly provides foreign news and footage for Sinhala news releases. Also, another unique role is the release of country- specific news for the News Exchange Unit by Asia. In addition, the production work of the "Sividesa" program was also carried out for current and foreign news from 6.00 to 6.25 every morning.

News Media Unit

The media editing of Sinhala, Tamil and English trilingual news releases, the four- way foreign defense commentary program as well as the programs of the current affairs unit is also carried out by this unit. They are engaged in this duty from 4.30 am to 10.30 pm according to different shifts. It is special to work till 12.30 pm in the broadcast of live programs like "Karata Kara" in the current affairs unit. Photojournalists are also employed for news coverage work to get the footage from every place in the island through FTP technology. This unit, where pre- campaign tapes are prepared, consists of 07 officers.

News Web Unit

The unit consists of a unit head and two officers. The role of this unit is to maintain the official website, YouTube, Facebook page updates etc. of the news department.

2022 Special functions performed by the division

The unique work done by the 2022 division is done in a way that does not create negative attitudes in the people and the information provided by the government.

As per the instructions, the news reporting was done successfully without illusions. In the year 2022, 04 main news broadcasts were aired daily.

Sinhala News - 12.30 noon/ 8.00pm

Tamil News- 7.30 pm

English News - 9.00 pm

Subsequently, the time of telecasting of major news announcements was changed from February 2022, accordingly,

Sinhala News - 12.00 noon / 6.50 pm

Tamil News - 7.50 pm

English News - 8.50pm

Time has to be used for a special event or emergency happening in the country or for a special news announcement.

The producers of the news section were classified under various categories such as investigative news, parliamentary news, feature news etc. and worked to prepare news features.

In particular, necessary activities were started to open the computer system and server system of the news division.

There was no proper editing process in the news Division, and in the year 2022, the television news Division adopted the Octopus Automation process accepted by the world. Accordingly, new computers have also been installed in the news department. Simultaneous training was also provided. After 20 years of changing the inside of the news section, giving a new look, the expert section has also been brought to a higher level.

Also, it has been facilitated to present news images with HD technology. A news background which was a major shortcoming for news was broadcasted. Booth No. 02 was used to bring the form of news presentation to a higher level and thus the technical and quality of the news has been improved.

Current Affairs Unit

Every moment the world is changing, updating. It also has an analytical space with news values.

Sri Lanka Television Corporation, a huge national media organization, provides information accurately with balanced view and targets the genre in the mind of the audience through the programs created through the current affairs unit. Transcending the documentary center of a news story, all social phenomena, characters and layers that need to be known are emphasized through this.

Its form takes different forms. Produce these programs both live and recorded

does Many positive aspects including national and international festivals, events of current importance, projects launched for national renaissance are popularized through this unit. The human resources of the Current Affairs Unit are six (02) producers under the Deputy Director (Current Affairs), six hundred (06) Assistant Producers, one Management Assistant (01) and

Consists of one (01) office assistant.

Special functions carried out by Current Affairs Unit.

- ❖ Inauguration of the Sessions of the Parliament chaired by the President is live Broadcast.
 - ❖ Live broadcasting of the independence celebrations attended by the President and the Prime Minister,
 - ❖ Live television for the inaugural national program to develop a thousand national schools Providing media coverage.
 - ❖ The section of the Central Expressway from Mirigama to Potuhera will be handed over to the people
 - ❖ Sri Lanka AmarapuraMahaNikaya Supreme Grand Leader Most Venerable Dodampahala Sri Chandrasiri Jama Nayaka SwamindrayanuttAmarapuraMahaNikayaThe Credential Awarding Ceremony Live broadcast.
 - ❖ To make the Central Expressway from Mirigama to Kurunegala into the right of the people .The program is live
- ❖ 2021 “Shilpa Abhimani” President Handicraft Awards Ceremony Live Broadcast
- ❖ Special conducted by the Ministry of Health on the occasion of the one year anniversary of the Covid vaccine

- ❖ 2022 - 74th National Independence Day Celebration Live Broadcast
- ❖ Live broadcast of the national ceremony of awarding 100,000,000 Ranbima deeds
- ❖ International Women's Day Celebration - Live TV Broadcast from Khanda International Conference Hall,
- ❖ Every month Poya Day Dharmanushasana Live Broadcast
- ❖ Indian External Affairs Minister's Visit to Sri Lanka Live Broadcast
- ❖ Irrigation Prosperity – II Program Live Broadcast.
- ❖ Recording and broadcasting the reception of the Nada ship at the Colombo port.
- ❖ Live telecasting of the State Festival of Hair Oil, New Rice Festival,
- ❖ Live telecasting of the National Heroes Day from near the Battaramulla Heroes Memorial
- ❖ 2023 - Budget speech“ live telecast.
- ❖ Live coverage of all national events including the special programs of the Parliament of Heads of State.
- ❖ Cabinet decision notification press conference which is telecast live every Tuesday
- ❖ It broadcasts reports on the development activities of the government.

Description of programs produced by the Current Affairs Unit,

- ❖ Newspaper Analysis of Newspaper Headlines (6:00 am, (8) - 7:00 am)
- ❖ A New Day (7.00 am –8.00 am) Economic and Social Discussion (Operated through Institutions People are informed about development projects)
- ❖ Karata Kara Live Political Program (Monday 10:00 P.M.) ** People's Day Every Wednesday 10:00 PM
- ❖ Mahajana Dinaya live program (Wednesday 10.00 P.M.)
- ❖ Shanida Ayubowan (Shanida Sara Sangraha - Saturday Morning 8. 00)
- ❖ Hello Health Magazine Program (Sunday evening 3.00)
- ❖ Magazine program related to the life of Rata Minas (Saturday 2.30 pm)
- ❖ Nugasevana - Katha Sangamaya Program (Thursday 8.00 am)

Tamil Unit of Current Affairs Unit

Current Affairs Tamil Unit is maintained under Current Affairs Unit. The unit also produces current affairs and political programmes. In addition to this, special notes are produced in Tamil that are important for the times and information related to the

Honorable President's foreign visits and national events is produced in Tamil. Two (02) Tamil support producers are working in this unit.

The current affairs unit also produces several programs for TV Netra channel through Tamil programs.

- ❖ Naledugalilndru (Tamil Paper Review) – Monday to Friday at From 7.30 to 8.00, the current events unit is in long- term preparation for the organization of a huge project that will give life to a design possibility that has exceeded the use of labor. The result is ready for the same mission in the future in the same way that it has been presented to the audience in the form of images and sounds.

News camera unit

Ekna head, equipment operation officer along with cameramen 14 E.N. G. Consisting of 10 assistants, this unit covers local and foreign news, official state events attended by local and foreign heads of state in Sri Lanka, foreign delegation summits in Sri Lanka, news coverage of His Excellency the President and the Prime Minister, election news coverage, natural disasters, etc. accomplished. The unit is equipped with state- of- the- art cameras and accessories including Live U equipment.

Production Services Division

The aim of the production services department is to provide service contribution for the quality and artistic execution of the corporation's programs in accordance with the technical standards so as to attract a high audience. At present, the production service department is providing optimal services for the organization by devoting itself to that purpose.

The production service department will be the provider of the basic services and equipment required for camera work, sound recording, lighting, background design, media images and feature composition, which are primarily required for the use of video technology in the production of television programs. Basically, this section will provide all other services except the editing and broadcasting of data records.

This section consists of 6 units which are separated into lighting, media, camera and background units for recording the related camera equipment. From 12.29, 2022, the Television Corporation Library was also included under the Production Services Division and will operate with 7 units. All the units are working 16 hours a day under a shift system.

All field recordings related to program production are done by this division. In addition, since 2010, programs have been produced by the External Broadcasting Corporation (OB).

This year, as in previous years, the Production Services Division also provided various projects and consulting services based on technical requirements in the purchase of video equipment for the media units of many government institutions. During the year free three-month in- service training was provided to undergraduate students in universities as a national service.

Camera unit

There are two main functions of the Sri Lanka Television Corporation as a television broadcasting organization.

1. Production of television programs
2. Dissemination of produced programs

Television programs are produced either in the main studio complex in Colombo or off- site (live or as a recording). Television is an audio visual medium. Therefore Here the relevant scenes and sounds are recorded with the help of television cameras. When using video technology in the production of television programs, camera work takes a leading position. Accordingly, except for the news coverage carried out by the Sri Lanka Television Corporation, the camera work of all studio and external programs is done by the camera unit.

Image plays a part in providing the audience with quality television programs We contribute to the production of quality and artistic programs It is supported by creative cameramen. Accordingly, all manner of things These are talented cameramen who are well trained in producing creative programs

It consists of Accordingly, all studio programs including the news studio, live and recorded teledrama and documentary programs etc. are carried out using external broadcasters in all field productions. Camera operation is performed by the camera unit.

The camera unit consisting of 47 cameramen operated under the supervision of an Acting Unit Head.

The composition of the camera unit is as follows.

position	employee	Position, nature	Number available	No of posts sanctioned	Number of vacancies
Assistant Director	MM 1-1	Executive	01	-	01
Chief Cameraman	JM 1-1	Non-Executive	05	01	04
Cameraman	MA 2-2	Non-Executive	42	38	04

- Cameraman services provided by the unit

How the recording was done	Amount of recordings	Number of craftsmen employed
External Multi Camera Covers (PS OB+OB1+OB 2)	76 programs 107 days	817
Studio No. 1	Every day from 5.45 hrs to 20.30 hrs .	4 x 365 = 1460
Studio No. 2	Every day from 7.00 hrs to 20.30 hrs	3x365=1095
Studio No. 3	According to programs every day	3x365=1095
Newsroom	every dayfrom 7.00 Hours to 21.30 hours	2x365=730

Sri Lanka Rupavahini Corporation – Annual Report - 2022

soap opera	05 programs for 18 days	36
Field Productivity Surveys	649 programs	873
Field Surveys	67 programs	67
total		6173

The contribution given by the unit to the production of programs is given below in terms of equipment and quantities

The device	Amount owned by the unit	Services provided during the year 2022	Approximate value
Full HD EFP camera unit	10	649 programs	For 8 hours=Rs.10,000×649=6,490,000.00
Jimmy Jib Arm	01	194 days	For 4 hours= Rs.6,500×194=1,261,000.00
Tube truck	01	121 days	For 4 hours= Rs.1250×121=151,250.00
Track And Dolly	01	22 days	For 4 hours= Rs.3250×22=71,500.00
Slider	01	12 days	For 4 hours= Rs.1,2500×12=15,000.00
Coptercam	04	74 days	For 8 hours= Rs.8,000×74=5,92,000.00
		Total	Rs.8,580,750.00

Conducting training workshops

In addition, training programs of two weeks each for 3 groups of Kelani University students who came for practical training were conducted in the year 2022.

Recording Unit

position	Number of employees	Nature of the post	No. of posts sanctioned	Number available	Extent of vacancy
Assistant Director	MM 1-1	Executive	01	-	01
Master Audio Visual Compose	JM 1-1	non-executive	01	02	02
Senior Audio Visual Composer	MA 4	non-executive	08	08	-
Audio Visual Composer	MA 2-2	non-executive	08	06	02

Television programs are a combination of two mediums, image and sound. The audio part of this is done by the recording unit. The aim of our unit is to always maintain the sound quality of a television program very well and communicate that program to the audience.

The role of the unit is to present the high- quality audio of all programs such as TV dramas, sports, music, news, and other programs broadcast on our channel. So far, the unit has been able to perform the task in a very high quality.

And since 2010, for the betterment of the organization, this unit has provided an external radio station. It has been created. To the talent and skill of the artists involved in the recording unit. This is a perfect example, using the concept of multi- tasking skills in all of this exterior car. It is special that the duties are performed by the officers of the unit. Live since 2010. It has contributed to over 1200 broadcasts and recordings. By this. The amount of money saved to the institution is also huge. This unit has also contributed to the creation and broadcasting of very difficult work programs such as the annual Siripa live work programs.

This unit has also contributed to the creation and broadcasting of very difficult programs like Every recording or live program conducted by the Production Services Division is managed by the skilled technicians of the unit using the resources of the institute of very high quality sound management is being processed.

Also, in various external activities of the corporation, the sound administration works are also done voluntarily and in huge works like Salalihini Pratibha, as well as during the retirement ceremonies of the hall officers, the sound administration work is carried out by the officers of the recording unit without any hesitation

The composition of the recording unit is as follows. Services of audiovisual composition composers provided by the unit

Recording Method	Number	Number of Days	Number of Artits
Multy Camera Production(PS OB)	56	67	243
Tele drama (Single)	05	18	36
Field Production	649		873
Event Serveys	67		67
Total			1219

The unit's contribution to the production of this program, equipment and interviews are shown below.

The device	Number of programs served in the year 2022	Approximate value
PS OB FACILITY	56 programs called 67	Rs.67x60000 = 4020000/-
EFP COVERAGES	649 programs 873 artists	For 8 hoursRs..10000x 649= 6490000/-

The senior officers of this unit have contributed resources regarding audio compilation for training courses for external and internal applicants which is planned by research & training unit.

Lighting Unit

The purpose of television lighting is to control the light in accordance with the camera angle and provide high- quality frames with life. Accordingly, the lighting unit contributes to the lighting and design work for all field productions carried out by the television corporation. The village unit provides lighting for all kinds of productions such as drama, documentary programs, education, magazine, children. Apart from that, he also contributes to all the events

and state functions attended by His Excellency the President and the Prime Minister. Field lighting is more difficult than compartment lighting. Until now, we have had a specially

Posision	Category of Service	Nature of post	No.of posts sanctioned	Number available	Extent of Vacancy
Assistant Director	MM 1-1	Executive	01	01	-
Master Audio Visual composer	JM 1-1	Non Executive	01	-	01
senior Audio Visual composer	MA 4	Non Executive	-	01	-
Lighting designer	MA 2-2	Non Executive	15	03	07
Audio Vishual Composer	MA 1-2	Non Executive	-	01	-

trained team to provide the required light for each frame in the face of various weather and changing environmental factors. Five lighting technicians and trainee lighting technicians in this unit Two are employed.

ENG / EPP Assistants

It is the duty of ENG/ ESP assistants to supervise camera, lighting and recording functions in television production. 15 ENG/ EFR assistants are employed in the unit and their services are provided in the production services department for external broadcast vehicle, cab and external to arm, tube track and external track and trolley and external recording. .

The Deputy Director (Lighting) also supervises the assignments and duties of the ENH/ ESP Assistants working in the Production Services Division.

Production Service Maintenance Unit

Production Service Maintenance Unit The maintenance unit of the Production Service Division is also functioning under the Deputy Director (Lighting). High value carriage tripod repair, jib arm repair work and special maintenance work are carried out by this unit and a retired senior cameraman was employed on daily fee basis. This unit is also not included in the corporate structure

Rajatha Studio

Rajata Studio was established to reduce the cost of program production and live broadcasts, and it belongs to the production services division. At present, Rajata Studio is widely used for filming programs. Meanwhile, the annual New Year live programs, Hindu New Year celebration (Thaipongal), beauty crown etc. programs are shot in the same studio. Several live broadcasts on Poya Day and "Dhamma Sarathi" programs were filmed in the Rajata studio.

Graphics & Animation Unit

The Media Image and Servicing Unit is a unit that has artists who can decorate the television screen attractively using modern technology with design skills, using the

computer according to their abilities to create media images and animations appropriately and increase the artistic and quality of the programs and make them attractive. The cinematography and animation unit plays an invaluable role in keeping the audience glued to the television screen.

Creators of media and animators for their programs Contributions are given in moderation. Performed by a videographer and animator Among the tasks to be done, creating media images for programs, two- dimensional for programs or creating 3D animations, creating themes for programs, Creating trailers for programs, booths and main booth characters

To carry out production activities. The Media and Animation Unit has 17 permanent staff officers and two officers working on service assignment basis.

Set Design Unit

Set Design Unit is a very unique unit of Sri Lanka Rupavahini Corporation.

Data related to the theme of a TV show is presented in the background, and it is a support to enhance the creativity of the program.

A backdrop is definitely used for all the programs produced in the corporation, and the art direction work for externally recorded programs, tele dramas, musicals and records is performed by this unit. Accordingly, the role of this unit is evident in preserving the identity, increasing the quality, providing a high trade value, and helping to maintain the company's reputation.

Set Unit consists of staff under the supervision of Assistant Director (Set), and the staff of Set Design Unit is as follows.

Post	the number
Assistant Director (Set)	01
Head of Unit (Set)	01
Set designer	07
Senior Costume Designer Asst	01
Senior Assistant	02
Set builder	02
Set Assistant	07

Role performed from January 2022 to December 2022

- Later application in studios (including live programs) - 2426 programs
 - Background applications in RajathaStudio - 26 programs
 - External recording - 15
- Short drama - 06

Newly designed special program backgrounds

- Creation of Pirith Mandapam for annual Pirith Sermon
- Creation of news background
- Record Programs 06
- Studio Backgrounds 12

Use of Virtual Key Set to increase the quality and ease of duties in the background unit.

By doing this, the cost and space saved for the discussion programs that are currently being conducted in the cabins will be saved, and the storage facilities and human labor can be saved in the unit.

Make- up Unit

The main function of this unit is to provide creative input for all studio recordings, external recordings and live programs produced by the corporation. Accordingly, about 50-60 artists participating in various programs apply make- up every day.

Total staff strength is 8 with 2 senior makeup artists and 6 makeup artists. Accordingly, in addition, two stylists have been employed on a hired basis to do hair styling for news and lottery programs, and an existing stylist has been released from stylistic duties to supervise those stylists.

Engineering Division

During the past 40 years, direct contribution from the engineering department has been given for the production and broadcasting of the Corporation's programs in accordance with international high technical standards. The engineering department is mainly operated by 07 units and consists of main control room, cabin and external broadcast, transmission, maintenance theft and communication, project management and electrical and air conditioning units. In addition, products

The engineering department also contributes to the technical needs of all other sectors including the service sector and the news sector. Accordingly, in the year 2022 also in the implementation, maintenance, new project management and procurement process of the corporation's technical equipment, the engineering department has contributed well.

Skilled and experienced engineering and technical staff perform duties in the engineering department and engineering and technical services, broadcasting and transmission engineering for 03 channels of Sri Lanka Television Corporation, for studio and external broadcast production works. It was done under the supervision of the Head of Telecast and transmissions of Engineering Section and Deputy Director General (Engineer) Acting

Special tasks and projects carried out in the year 2022

1. Inception of Rupavahini HD Channel:-

Many programs are produced according to HD technology after upgrading the studios, outside broadcasting and editing (post- production) equipment in the engineering department to HD technology, and the broadcast and transmission equipment has not been fully converted to HD technology, so the productions such as HD programs, commercials, are available internationally. Since live sports entertainment, foreign TV dramas and movies, documentary programs are received according to HD technologies, the Palayout system used for the TV channel in the main control room will be converted to HD technology and broadcast on Sri Lanka Telecom Peo TV channel number 301 starting on November 14, 2022. done

2. In parallel with the 40th anniversary of the Rupavahini Corporation, the news broadcast will be broadcast in a new format from Studio No. 02.

Using new computers and automatic news production system for news department and using new news background LED video displays Started from 27th February 2022

3. Purchase of new equipment under Treasury provision -;

02 new VHF 2 KW transmitters were purchased and installed in the year 2022 for Namunukula and Suriyakanda rebroadcast stations using the treasury allocations for the years 2020/2021.

Present Situation:

Currently, the equipment of the Sri Lanka Television Corporation has been gradually converted from analog technology to digital technology, and although the equipment and systems with old technology are still being used, the program production and broadcasting activities have been successfully carried out at a very high level with the hard work and dedication of the officers and technical staff of the engineering department. will be done

The products, broadcasting equipment and systems of the Sri Lanka Television Corporation should be fully converted to HD technology and for that, the production and broadcasting activities of 03 channels are being carried out by using the currently used technical equipment and systems in a risky and challenging manner due to the lack of necessary financial provisions. .

Also, all the needs and maintenance of the equipment of the main office as well as the external broadcasting stations were properly carried out in 2012. All these operations, maintenance and project management activities were carried out amid the existing vacancies in the engineering department.

In addition to this, many government agencies have also provided project and consultancy services based on the technical requirements of the previous years as well as in the year 2022. As a national gesture, three- month and six- month free opportunities were provided to

engineering candidates and technical diploma students in universities and technical colleges and this year 45 Eden students were given training opportunities.

In the year 2022, for the live broadcast of several international cricket tournaments in Sri Lanka, television corporations have provided satellite receiver facilities on rental basis for Swadhina TV, Sirasa and Supreme channels, and the engineering department has provided DSNG facilities for the BBC. More than 05 million was arranged to get additional income for the Rupavahini corporation.

Main Control Room:

- The main duty of the main control room is to maintain the broadcast functions of National Television, Netra, and I channels and edit the programmes. There are 37 senior technical officers and 5 technical administrators working in the main control room.
- Maintenance and editing of broadcasts in the main control roomThe employment of technical personnel for the work is performed by the technical administrators.
- Awardwinning programs and socializing clubs produced by the television corporationBy editing and broadcasting the host programs also in the main control roomOfficials are giving maximum contribution.
- All the editing work has been carried out in accordance with HD technology to broadcast UK programs with high image quality.
- Upgrading the broadcasting of the TV channel to HD technology in the main control room to provide clear picture to the viewers.
- Peo TV Channel No. 301 TV HD" more with high quality broadcast has started.
- Due to the decommissioning of the EVS machine used for slow motion play back and special occasion editing in the production of sports programs, the equipment and handlers had to be obtained on a hire basis in the past, by using new software (V-Mix) and the existing physical resources. The main control room has been able to save a lot of money while raising the production quality of the sports events.
- In various award ceremonies held throughout the year, several programs contributed by our officers have been awarded.

- With the intervention of Mr. DamilaJayasundara, a technical officer working in the main control room, 09 free program series were obtained from the RAPA Institute in Korea and during the broadcast, those programs have attracted a high audience.

Studio and Outdoor Broadcasting Unit:

❖ Technical Administrator	-	07
❖ Senior Technical Officer	-	11
❖ Technical Officer	-	20
❖ Cabin and Outside Broadcasting Assistant	-	13
❖ Store Officer		<u>01</u>
		<u>52</u>

Technical Administrator

- ❖ Live and recorded TV shows in studios and external broadcastsTo maintain administration and quality.
- ❖ Prepared shift schedules for technicians and booth and outside broadcast assistantsMaking and delegating work to staff.
- ❖ Notify and follow instructions of upper management in case of emergencies
- ❖ Preparation of specifications in the purchase of equipment
- ❖ Contribution of resources for training programs.

Senior Technical Officer

Technical Officer cabin staff is mainly divided into 03 job categories.

- ❖ Audio Compilation
- ❖ Visual Compilation
- ❖ Lighting direction

Conducting live recording of national festivals, religious festivals, news, music, sports (local and foreign), live political dialogues, education, sports, lottery draws etc. in studios and outside broadcasts.

Studio and Outdoor Broadcasting assistant

- ❖ Assist in the installation and programming of audio and lighting equipment in booths and outside broadcasts as directed by technicians

- ❖ Careful use and storage of broadcast equipment assemblies.

Store Officer

- ❖ Assist in the placement, installation and programming of audio and lighting equipment in studio and outside broadcasts as directed by technicians.
- ❖ Assembly, protection, careful handling and storage of broadcasting equipment
- ❖ Ordering equipment and accessories
- ❖ Stock maintenance
- ❖ Issuing and retrieving lighting equipment and optical equipment required for in-Studio and external via broadcasts
- ❖ Maintaining stock of spare parts and ordering them as and when required
- ❖ Maintaining stock belonging to the warehouse

Below is the report of the live and recording done in the cabin unit in the year 2022.

Live hoursHours of recording

• Studio No. 1	1718	774
• Studio No. 2	300	100
• Studio No. 3	<u>230</u>	<u>500</u>
Total	<u>2248</u>	<u>1374</u>

- ❖ Major news coverage - 1460 (Sinhala / Tamil / English)
- ❖ Special news coverage - 40

Outdoor Broadcasting Unit:

The outdoor broadcasting unit using 1 3 broadcasting vehicles and using the composite unit has done live and recording, national events, sports programs, music programs and religious programs as follows.

outdoor Broadcaster No. 1 (OB 1)	-	11 (Number of days 09)
outdoor Broadcaster Number 1 (OB2)	-	26 (Number of days 43)
outdoor radio numbers 2 and 4 (OB2+OB4)	-	<u>04</u> (Number of days 09)
Total sum -		<u>41</u>

- A system of 05 cameras with HD technology owned by the Presidential Media Division and about 2000 m of Traixcable has been released to the television

corporation. They are formally included in the External Broadcasting No. 1 Prescription Goods Register.

Transmitter unit :

During 2022, the transmitter unit performed the services mentioned in the Act.

- SLRC operates VHF and UHF transmitters in the country wide terrestrial transmission networkMaintenance
- To link live television programs across the country and abroadOperation and maintenance of generating microwave, DSNG and other equipment.
- Live external broadcasts were planned. Considering the need for HDFeeds and the lack of Micro Wave connections, most of the live programs are SLT Fiber.External broadcasts were scheduled using the connection.
- Steps were taken to resume SLRC transmission from Sri Lanka Telecom Jaffna. In November 2021, plans were launched to resume Northern TV transmission through the Jaffna- based Sri Lanka Telecom, which was suspended by the evacuation of Palali within the Sri Lanka Army.
- In addition to the above, additional revenue of Rs.13.53 million was generated in the year 2022 by leasing DSNG facilities and Satellite Demodulator owned by SLRC to local operators.

Maintenance Unit:

The maintenance unit of the engineering department is maintained separately as two units to facilitate the maintenance work and the main system equipment inspection, installation, maintenance and repair work is carried out by the maintenance unit 01, and the maintenance and repair work of the equipment belonging to the Sakshatra equipment and production service department is carried out by the maintenance unit.

Both these units are staffed under the supervision of Engineer (Maintenance) under Chief Engineer (Maintenance Information Technology Projects) (Broadcasting, Electricity and Air).

Management Unit - 01

This unit mainly houses the Corporation's Main Control Room, Room No. 01,02,03, News Room, Rajata Room, External Broadcast Buses (OB – 01 and OB – 02) All Editing Rooms, 20/30 Animation Unit, Film and Sound Dubbing Unit, media image and animation unit, including the news section, all the electrical equipment related to the production of television programs belonging to all departments and units of the corporation, all necessary

maintenance work and necessary repairs were carried out to restore the faulty equipment. For that purpose, this unit consists of 15 technical officers and two maintenance assistant officers under a technical administrative officer and a senior technical officer.

During this year, a large number of repairs related to audio- visual electronic equipment used for the production of television programs were successfully completed and the equipment was put back into service.

The technical contribution of the officers of the maintenance unit was given for the 25 major live maintenance and recording done by the OB-01 and OB-02 external broadcasting buses. Independence Day Live Broadcast, Gangarama Vihara Parade Live Broadcast, Air Force Bike Ride, Papa Cricket Tournament Broadcast, Poe Dharmadeshna Broadcast (Prime Minister's Nidasa), Children's Day Live Broadcast, Budget Live Broadcast, Christmas Service and Year End 31' Night Music Concert can be.

When necessary for the Hon'ble Prime Minister, Gutaliprometer duties were provided with the technical contribution of the officers of the maintenance unit.

About 78 major bugs associated with the Corporation's telephone system were repaired and corrected during the past year. All the necessary technical facilities were provided with the contribution of the officers of the maintenance unit to upgrade the corporation's television broadcasting from 50 technology to modern HD technology.

All the necessary technical facilities for news broadcast again from booth number 02 and

A new LED Wall was installed for the news background and relevant connections were provided.

The existing visual control device for coach no.03 has been removed and new visual controls with HD technologyA device was fixed and improved.

In addition to this, the technical quality of the new equipment purchased for the corporation was checked, quality reports were prepared and the equipment was installed in the relevant units.

Maintaunence Unit - 02

The unit consists of a technical administrator and two technical officers and the maintenance unit operates with the services of assistants at +01.

This unit offers production services (EMG/ EFFP) and news camera equipment, recording equipment, audio mixers, synthesizers, microphones, battery chargers, power adapters, and camera systems. All audio- visual electrical equipments related to the production of Adi Rupavahini were repaired and proper monthly maintenance and inspections were carried out.

This unit has also performed 65 monthly maintenance services of ENG camera equipment and 45 monthly maintenance of news department camera equipment in the last year.

Also, the maintenance and repair work required to maintain all the audio visual electrical equipment of the External Broadcasting Bus (PS OB) belonging to the Production Services Division was also carried out.

In addition to the village, necessary repairs and proper maintenance were also carried out during the last year to keep the corporation's security camera system (CCTV System) and the corporation's external calls (PA System) in good condition.

Electrical and air conditioning unit:

In addition to the following main generators, air- conditioning systems and air- conditioning systems of external broadcasting buses installed in the Colombo carriage complex, maintenance work and fault corrections of the generators and air- conditioning machines installed in the external broadcasting stations were carried out according to a regular schedule.

Accordingly,

(1) Maintenance and bug fixes performed in 2022

(electrical)

- 1250KVA and 250kVA installed in the Colombo Coach Complex premises. Diesel generators
- 250KVA diesel generator installed at Piduruthalagala main broadcasting station
- 100 kVA and 7(0 kVA) installed at Gongala and Deniaya broadcasting stations
Diesel generators

2) Maintenance and bug fixes performed in 2022

(air conditioning)

- ✓ Monthly quarterly and yearly maintenance activities and defects of the following equipment, mistakes made.
- ✓ The two central air conditioning systems and related equipment in the 3 and 2, 1 carriage complexes

- ✓ the air conditioning system of the external broadcast cars) OB- I, OB-2, PS OB and becauseWalana Bus
 - ✓ All Refrigeration Equipment in Sri Lanka Television Corporation
 - ✓ External Broadcasting Stations Spilt Air Conditioners - 203

 - ✓ Electronic air filters
1. Installation of the main parts of the second air conditioning system
 2. OB-2 bus in order to restore the instability of air conditioners and related equipment Repairs, Maintenance, and Brand New Btu 24000 Split Air Conditioners

Information Technology Unit:

The Information Communication and Technology Unit primarily maintains, administers and manages the active and passive devices including the local area network of the institution. Also the corporate websites and internet site of National Television are designed, maintained and periodically updated.

The design and processing of organizationally required computer hardware and related data storage processing, maintenance and management are done by the IT unit. Furthermore, this unit handles the organization's social media accounts and releases and promotes information to social media networks. The permanent staff is 15 people and they are working under the titles of Engineer (IT), IT Administrator, Analyst Programmer, Security Technology Coordinator and Hardware Technician.

Under the supervision of the IT unit, 270 computers, 35 printers, corporate computer network and device performance and monitoring websites and emails, related server computers to record arrival and departure and maintenance of the system.

- The following tasks have been carried out by the Information Technology Unit during the last year. Launching new YouTube channels for promoting and promoting viable motion pictures, YouTube short videos and introducing Instagram and Tiktok
- Re-launch of the updated TV website and facilitating access to the National School program and educational program series broadcast on Nana Mihira through the interactive video website.
- Program producers use websites and social media platforms to advertise and raise awareness of their programs.

- Various live sports broadcasts (Cycling, motor racing, cricket, rugby, handball, swimming), quiz competitions, election result broadcasts of reality programs require development and implementation of computer media imaging software.
- As social care programs, short videos and messages are released through social media networks to constantly inform people about the use of good health habits related to Covid-19 and to use electricity carefully and to be careful when using highways and driving. Conducting seminars and discussion of model papers on YouTube as a preparation for exams for students of Aposa (U.P.) and fifth grade.

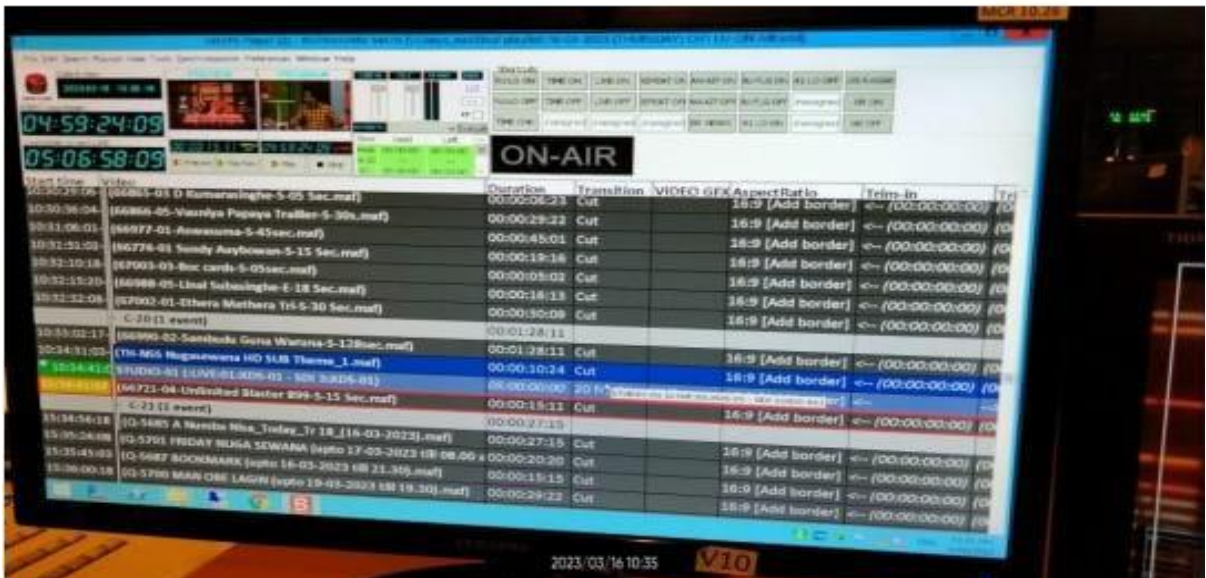
Project Management Unit:

This unit was started from 2022.02.01 for project management, preparation of project proposals, board papers and procurement documents required for the planning and implementation of projects in the engineering sector. Currently, this unit represents the main control room, cabins and external broadcasting, maintenance and transmission units

Acting under the direct supervision of four Technical Administrators and an Engineer-in-Charge of the Unit and a N.A.J (Engineer),

This unit carries out the duties of annual reports, compact plan, annual action plan, progress review reports related to the quarters of the action plan, preparation of technical specifications and procurement documents and preparation of technical arrangements for various special projects. Apart from this, this unit also provides technical and engineering services to external organizations and the development and updating of equipment and systems in the research and engineering sector related to new hardware and software. In the year 2022 This unit also carries out the necessary activities for In the year 2022, with the contribution of this unit, the following special projects were carried out in interconnection with other relevant engineering units.

1. Coordinating the technical activities in conducting the 40th anniversary music concert with the participation of the Prime Minister from 03 studios.
2. Upgrading of compartment no. 02 for news broadcast with Full HD technology.
3. Play Out Server system of TV channel in main control room with HD technology
3. Translating programs for broadcast.
4. Making necessary arrangements for broadcasting the TV channel SLT Peo TV CH-301 in Full HD technology.
5. To convert the video system of compartment No. 03 to FullHD technology and make the necessary arrangements to produce the programs in HD technology.
6. Old 50 along with adaptation of TV channel programs to HD technology Making arrangements for telecasting of programs in (PAL wide 16:9) mode.









Marketing Division

The Sri Lanka Television Corporation was established as a national channel by an Act of Parliament in 1982. As a commercial company, this company is committed to carry out commercial activities to continue as a pioneer company in advertisement and advertising in Sri Lanka.

From the beginning, a commercial department was established under a director. But with the emergence of other channels in the country, the competitive market that existed by the year 2000 Board approval has been obtained to restructure Fit as a sales division. Accordingly, a sales unit consisting of sales executives has been established. Full supervision of this was given to the Director (Marketing). At the same time, according to the service needs, the sales unit, the scheduling unit, the program promotion unit, the publicity and media unit and the administrative unit are also in this.

Designation Names and Number of Employees in Marketing Department

Director (Marketing) Mr. /Contract	01
Assistant Director	01
Sales Officer	01
Administrative Officer	01
Schedule Officer	01
Publicity and Media Officer/ Unit Head (Publicity and Media Unit)	01
Managing Assistant Unit Head (Promotion Unit)	01
Schedule Asst	01
Senior Managing Asst	02
Managing Assistant	09
Calligraphy and media artist	04
Customer Assistant	01
Office Assistant	03
Sales Executive (Contract)	<u>08</u>
Total	<u>35</u>

Sales unit

The main function of the marketing unit is to sell the air time owned by the television corporation and to develop the economic strength of the organization by selling the programs produced by the television corporation.

For that, by acting as a commercial agency and maintaining a good relationship with advertising agencies, by preparing marketing strategies, other competitions

The revenue of the television corporation exceeded the channels. Also getting audience attention.

In the year 2022, the revenue obtained from airtime allocation of TV and Yatra, I channels is Rs. 1028,518,010.88 and the total revenue recovery is Rs.1049,178,123.00.

Rs. 138,877.01 in revenue from the sale of copies of televised programs and library screenings.

Scheduling unit

The main task of the scheduling unit is to accurately schedule all the sponsored programs and advertisements received for broadcasting and prepare the daily broadcast schedule of channel 03doing Maintaining separate files for all subscribers and sending an invoice for receipt of payment after broadcast and taking proper steps till payment is settled. In addition to this, work systematically with internal and external service providersA good coordination should be maintained to maintain.

In 2022, over 313 clients were served and the ad schedulesThe above staff have contributed to the scheduling of over 2162

Promotion Unit

To promote all the creations including tele drama projects produced by the corporation and bring them closer to the audience and to organize special promotional programs thereby providing income to the corporation.

Publicity and Media Unit

The primary responsibility of this unit is to launch advertising methods using print media to promote TV programs among the public. This is expected to create motivation about programs and channels as well as help deliver marketing value.

D.containing the programs of the corporation. Rs. 2,095,520,00 from the sale of Widi copies of Nana Mihira Question Papers Rs.8,111,240,00 earned from sale of kits.

Sales pitch to Roo Entertainment in the marketing Division

The purpose of this is to provide income to the corporation by selling DVDs of various programs aired by the television corporation and by selling examination papers. At various exhibitions, Ru Entertainment builds a booth in the market square and conducts sales through it. In addition, Thana Mihira question paper sets are distributed to bookstores all over the island and to institutions that request. Earning a special income that way.

Administrative unit

Maintenance of leave records of sales department officers, overtime fuel allowances, daily wage incentives. Participate in running the administrative work of subsistence allowances and marketing department.

Administrative Division

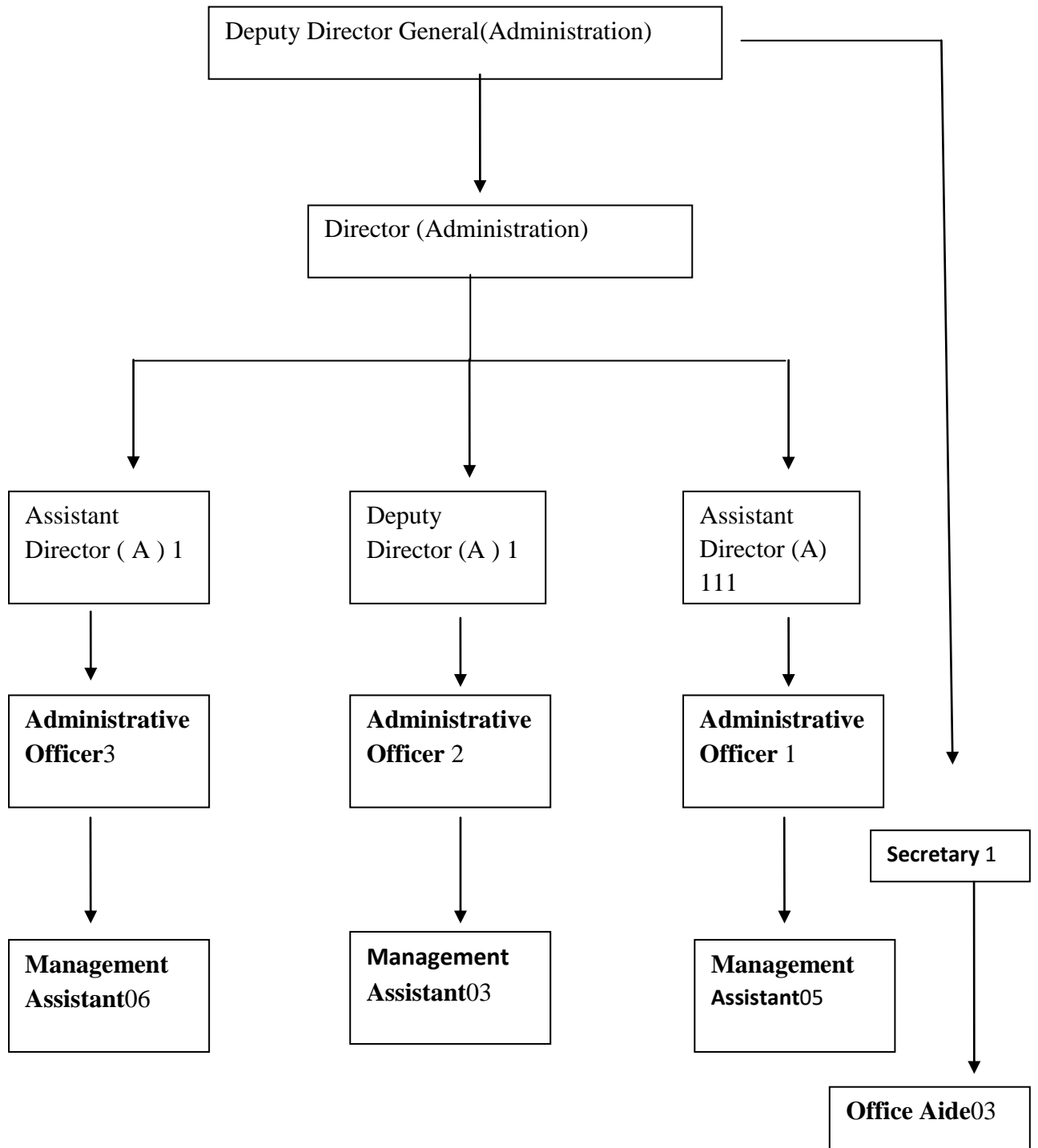
All the administrative activities of the corporation are carried out from the administrative department under the supervision of the Chairman/Director General.

The administrative division is controlled under the Deputy Director General (Administration).

Units under the administrative division

1. Administrative unit
2. Reception unit
3. Record room
4. Transport unit
5. Security Unit
6. Research and Training Unit
7. Legal Administration Unit
8. Internal Audit Unit under the direct supervision of the Chairman
9. International Relations Unit
10. Civil Engineering Unit
11. Library

Structure of Administration Unit



Functions performed by the administrative unit

1. Maintaining personal files of all officers of the Corporation,
2. Recruiting new officers for the Corporation staff.
3. Grant of promotions, annual salary increases and transfers of officers of the Corporation.
4. Information and reports requested by external agencies including the Ministry of Media Providing
5. Conducting all event organization activities of the corporation.
6. Conducting duties related to controlling the discipline of corporation officers.
7. Referral of officers for foreign training courses, foreign conferences, conferences, meetings, educational tours, workshops, cover activities and related duties.
8. To provide opportunities for training to students in external institutions (educational and professional) and they Referral to relevant sections.
9. Leave, accident leave, maternity leave, special and duty leave of all officers of the Corporation holiday Carrying out duties related to personal and official leave outside the country.
10. Providing medical insurance facilities and loan facilities for the welfare of corporation officers Carrying out other welfare activities including.
11. Carrying out duties related to Corporation Officers' Employees' Provident Fund and Employees' Trust Funds.
12. Duties related to providing official identity cards, uniforms.
13. Importing and distribution of drinking water and newspapers required by various departments of the corporation.
14. Duties related to Corporation Telephone and Cable

Special functions carried out by the administrative division in the year 2022

- Television Corporation's new comprehensive plan for the period 2023 – 2025 doing prepared
- Acting to obtain Cabinet approval for the transfer of television corporation premises land to the corporation by way of an exemption letter.
- Seeking the approval of the Ministry of Finance to fill the vacancies by inviting applications from within the corporation for 18 positions that had been appointed by officers on acting basis for several years and conducting interviews for the same.
- Promotion of the Corporation's Primary Management Assistant Associate Officer and Implementation Advisory Service Blocks (PL2, MA1-2, MA 2-2 ,MA -3, MA -4) 55 qualified officers promoted to the rank of Grade III in the respective service block. doing
- Promotion of the officers who are eligible for promotion in the blocks (MA - 4 JM 1-1) of the Corporation's implementation advisory services and junior management from the applicable grade in the 52 service block.
- Provision of duty lists for all junior and senior level officers including department heads of the corporation.
- Amended PF - 1, PL 2, PL – 3, MA 1-2, JM 1-1 as per the model procedures updated and issued by the Department of Management Services to update the recruitment procedures of the Corporation which had not been approved on 09.04.2012 , submission of new recruitment procedures related to HM 1-3 service blocks for the approval of Management Services Department.

In 2022, with the fuel crisis caused by the economic difficulties in the country, the special tasks carried out by the administration department to maintain the operations of the corporation.

Since March 2022, in view of the political instability and fuel crisis caused by the economic difficulties and inflationary situation in the country, as the leading electronic media of the government, the television corporation had also been entrusted with a great responsibility. That is, crisis situations are encountered to inform the people about the decisions taken by the government from time to time and to report the truth to the people and guide them to make wise decisions.

The measures taken by the administration department on the instructions of the Chairman and the Director General to maintain the daily activities of the corporation especially in the face of the fuel crisis in the months of May, June, July and August 2022, in a situation where public transport services were not operational, are as follows.

- Miscellaneous of the Corporation for the continuation of the essential functions of the Corporation Conducting directions and related coordination activities to prepare shifts for the officers of the departments to be called to work according to special shifts.
- Reported to work under conditions where public transport services were not functioning properly Working to provide special transport facilities for officers by the Corporation Transport Unit.
- Taking necessary measures for the basic needs and welfare of the officers who have stayed in the corporation for a few days after reporting to work for essential duties.

Information on the number of employees at the end of the year 2022**Number of employees as on 31.12.2022****Service bases****Number of employees**

Permanent staff	785
Contract staff	16
Service Assignment Staff	<u>12</u>
Total No. of Jobs	<u>813</u>

According to PED 06/2022 State Business Circular, 21 of the above 785 permanent staff officers have retired on 31.12.2022.

Approved staff

Subsidized permanent employees	1041
Licensed Contract Number	<u>08</u>
Total approved number of employees	<u>1049</u>

New recruitment in the year 2022

On permanent basis	4
On contract basis	4
On assignment of services	<u>2</u>
Total Enrollment	<u>10</u>

Information related to retirement in the year 2022

Number of retired officers in the year 2022 - 39

(Including the 21 retired officers dated 31.12.2022)

In the year 2022, 10 officers will be on duty in the administrative unit as gone abroad

Foreign official visits attended by officers of this corporation in the year 2022

09 Corporation Officers have participated in the 2022 Foreign Conference Training Workshop Award Ceremony and Programs, in accordance with the Ministry of Finance Circular No. 03/2022 and the Public Business Department Circular No. 04/2022 on Controlling Public Expenditure and on the financial status of the Corporation. No allowance has been paid by the Corporation to the officers who have gone abroad.

Anniversary celebrations in 2022

Performing PirithPinkama and DhanayamaPinkama held on the 14th and 15th of February for the 40th Anniversary of Television in the year 2022.

Internal Audit Unit

The Internal Audit Unit functions under the direct supervision of the President of the Corporation. The main task of the internal audit unit is to review the accounts and internal control systems and to refer internal audit queries to the relevant department heads about the faulty conditions in their operation and to report to the top management about the improvements and existing conditions when necessary.

This unit consists of 03 Management Assistants including Internal Auditor.

Tasks performed in the year 2022 and its contents

- The internal audit plan approved by the board of directors for the year 2022 has been fully and sample tested and reported to the governing body by utilizing the existing human and physical resources.
- 3 Internal Audit Committee meetings have been held during the year 2022.
- 02 audit inquiries and three audits covering several major sectors of the corporation Internal Audit Quarterly Reports submitted to the Ministries of
- Assurances and Management Audits Quarterly reports submitted to the Ministries of Internal Audits related to the retirement resignations of the officers of the Corporations during the year Reports are submitted as required.

Legal Administration Unit

According to the Corporate Organizational Plan of the Corporation, the Legal Administrative Unit is a unit operating under the Administrative Division of the Corporation. Among other matters of this unit, the relevant agreements are prepared and related to the transactions conducted by the corporation with external clients as well as internal employees. Also to the corporation in various courts

Against the Annual Report 2022 and the legal works assigned by the corporation, appearing before all the courts and tribunal commissions on behalf of the corporation and giving the necessary legal advice to the management. and higher in the corporation

Accordingly, by the end of the year 2022, cases have been filed in the district courts to recover an amount of 34,991,769,18 for 13 client borrowers. An amount of Rs 189,900/- has been recovered from that by the end of the year 2022. In addition, they have managed to recover 1,712,500,000 by taking legal measures without filing a lawsuit, that is, by interrogating and complaining to the police. In addition, the settled amount of 02 cases settled in the year 2021 was paid by that party in this year as well.

Also, 20 cases were filed against the corporation by the corporation's employees and external parties in various courts.

Out of the filed cases, 02 cases were decided in favor of the corporation in the district court and the assignment case was settled by a corporation employee in the appellate court. Furthermore, in a case held in the Colombo Provincial Civil Appeal Court, the interim restraining order obtained

against the corporation was also removed and the case was also dismissed and ended favorably for the corporation.

Also, 02 cases in the Supreme Court were concluded after hearing the facts of both parties. The remaining 14 cases are still under investigation.

Research and Training Unit

The Research and Training Unit is a unit established with the main objectives of research and training.

There is a fierce competition among media organizations in Sri Lanka to complete the market. In such a setting it is very important to examine the audience response to the broadcast programs as the audience numbers for different channels are important for program lineups and program composition. It is also important to do. For that, one of the functions of this unit is to analyze the survey report data and LMRB data reports and inform the management and production staff.

Surveys are also conducted to develop the content of the programs. This information is very helpful to produce superior programs and face the competition

Research and Surveys conducted by the Research and Training Unit in the year 2022
Television audience survey - 1 Gampaha, Kalutara, the most populous in Sri Lanka. Obtaining information from 120 randomly selected people from Colombo, Kurunegala, Kandy districts via telephone)
The interest of national television officials in connection with television programs is examined Survey - (Representing 08 major segments of National Television)

Another task is to provide necessary data and information for the students of universities and institutes of study for their research theses as per the approval of the Chairman and the Director General.

Preparation of the annual report is also a task done by this unit. Conducting training programs/workshops, external trainings for human resource development of the institute and this unit conducts paid training courses for people.

External training programs organized in the year 2022
Camera Training Course (Sri Lanka Navy) - Fee charged
Training Course in Television Presentation and News Announcement – Paid (Saturday)
Training Course on Television Program Presentation and News Announcement on charge
Training Course in Television Camera and Lighting Technology – Charged (Saturday)

Training workshops and seminars organized in the year 2022
Lectures on the current crisis and new technological trends in the television industry to the members of the management of the corporation and other officers on duty.
Tamil Language Proficiency Training Course for Television Corporation Officers

According to the work done by this unit to provide practical training for students of Universities, Vocational Technology Universities, National Apprenticeship Board and Industrial Training Authority, there is work required to provide practical training for 41 students in the year 2022. The information referred for this training is as follows.

Sub no	Unit oriented towards practical training	Number of students
1	Educational programs	04
2	Event management	04
3	News section	06
4	Dubbing	01
5	Media Imaging and Animation Unit	02
6	Drama	02
7	Documentary Programs	05
8	Channel I	04
9	Youth programs	04
10	Sports	03
11	music	03
12	Current events	02
13	Research and Training Unit	01
	total number	41

Program air time processing is another function of this unit. The broadcast programs of the two channels are classified and counted and it is counted separately as receivers rather than the air time of the programs.

Air time analysis

The total air time of the national channel in the year 2022 is 6090.7 hours. Out of that, 5647.1 hours were allocated for programs, while 443.6 hours were allocated for advertisements. The program air time of 2022 can be classified as follow.

National Television

the year	For Programs (Hours)	%	For Advertisements (hours)	%	total number ⁴
2022	5647.7	92.7	443.6	7.3	6090.7

Commercial air time

the year	For Advertisements	%	Paid advertising	%	Free classified ads	%	total number
2022	352.7	79.5	64.6	14.6	26.3	5.9	443.6

Commercial airtime by language

the year	Sinhala hour	%	English hours	%	Tamil hour	%	other hours	%	total number
2022	5232.9	79.5	174.2	3.1	181.1	3.2	58.9	1.0	5647.1

Sponsorship Contribution

Sponsorship has been received for 35.7% (2015.2 hours) of the national channel's program air time.

Program Classification	Hours	%
With Sponsored Contributions	2015.2	35.7
No sponsor subscription	3631.9	64.3

Classification of programs	National Channel (Hour)	percent %
Information Programmes		
News	699.7	12.4
Political	173.5	3.1
Economical	8.1	0.1
Social	301.0	5.3
Ayubowan	152.7	2.7
	1335	23.6
Educational programs		
Educational	292.5	5.2

Documentary	227.3	4.0
Agricultural	59.2	1.0
Sagaramaya	311.3	5.5
	890.3	15.7
Children's programs		
Child	205.4	3.6
Cartoon	68.6	1.2
	274	4.8
Women's Programs		
Nugasewana	525.1	9.3
Culture and religious programme		
Cultural	46.5	0.8
Religious	574.7	10.2
	621.2	11

Entertainment Programme		
Drama	459.9	8.1
Series of Stories	358.5	6.3
The Movies	227.9	4.0
Music	705.0	12.5
Varous	10.5	0.2
Comedy	2.8	0.0
	1764.0	31.1
Sports Programme		
Sports	47.3	0.8
Publicity Programme		
Publicity	55.6	1.0
Lottery	104.9	1.9
	160.5	2.9
Other Programs		
Other	<u>29.1</u>	<u>0.5</u>
Total Sum	<u>5647.1</u>	<u>100</u>

Airtime analysis of Nethra and channel eye channel (hours)

Program type	January	Feb.	March	April	May	June	July	Au.	Sep.	Oc.	No.	De.
5.20 am-6.00 pm												
The journal	19	8.0	12	21.5	22.5	24.0	20	17	2	13	25	25
Current events	10	6.5	10.5	11.5	12	8.0	5.0	6	14.5	7	13.5	13.5
Entertaining	34.5	29	24	72.25	43.5	24	36	1	53	45	20	20
Child	2.0	1.0	2.0	3.0	3.0	16	16	3.5	4.5	2	4	4
Sports	1.0	0.5	1.5	1.5	1.5	4.0	0.5	2	2	1	2	2
Sponsor	9.0	6	9	10.0	10.5	10.0	4.5	9.5	12.5	6	11.5	11.5
Rebroadcast	16	9	17	17.0	18	12.0	8.0	4	12	10	19	19
News	9.5	6	10.5	10.5	11	9.0	10.5	10.5	12.5	6.75	12	12
Link with Channel Eye	6.5	36	10.5	28.75	46.5	25.0	41.5	1	2	21	40.5	40.5
Tamil movies	70	101	52	83.5	126	119.0	120.0	3	2	86	73	73
Educational	10	6.5	10.5	11.5	12	8.0	8.0	4.5	14.5	7	13.5	13.5
Religious	26	17	27.5	28.5	30	26.0	13.0	25.75	24.5	17	32.5	32.5
Live sports broadcasts	119	118	149	32	27	33.5	67.5	253	141	4.5	72.5	72.5
6.00pm-11.30pm												
Sponsor	15.5	14.5	15.5	15	15.5	15	15.5	15.5	15	15.5	15	15.5
Entertaining	23	10.5	17	26	18	10	18	11.25	20	15.25	19	19
Tele drama	26	19.5	27.5	28.5	30	28	13	22	20	17	28	32.5
Reports	8	5.5	8.5	8.5	9	2	4	4	4	5	9.5	9.5
News	15.5	13.5	15.5	15	15.5	15	15.5	15.5	15	15.5	15	15.5

Link with Channel Eye	5.5	15	22	25	26	12	23	1	2	8	1.5	12.5
Tamil movies	12	6	12	11	18	18	6	21	27	12	27	24
Political	19	20	22	21.5	23	20	12	22	21	14	24	16
Live sports broadcasts	42		30			55.5	38.5	52	73	16 7.5	134.5	22.5
Total sum	499	449	506	489	518.5	494	496	507	494	49 6	494	506
Total flight time (hours)	5948.5											

Public Relations and Reception Unit

The reception unit provides necessary assistance to external parties including visitors who come to receive services from the corporation as well as to meet the top management, directing them to the relevant units and conducting telephone call operations. Getting an understanding of the operation process of the corporation and providing the opportunity to view it, especially regarding the requests received from external institutions and individuals including schools, is carried out under the subject of public relations.

Considering the requests received from external parties including school students who are engaged in educational tours to watch the television corporation, the opportunity to watch the corporation, which was suspended due to the Corona epidemic situation, was reactivated from September 2022. Accordingly, schools, private educational institutions and 131 other institutions have been given the opportunity to visit the corporation and under this, 12228 people including school children have visited the corporation in the year 2022.

It should also be mentioned that the contribution of the producers of the program department has been received for the detailed presentation about the operations including the production of the programs of the corporation to the external parties.

Transport unit

The main function of the Transport Unit is to provide transport facilities for the daily transport needs of the Corporation. The work was carried out using 36 corporate vehicles, 06 vans obtained for the news and trade sections on a lease basis and 02 double cabs obtained on a lease basis for Deniaya and Piduruthalagala broadcast stations.

Apart from that, renewing the company vehicles, obtaining fuel, insuring and registering them. Relating to new excess and cash claims for motor vehicle accident damages. The duty of vehicles acquired on duty and hire basis is carried out by the Transport Unit.

By performing a large amount of vehicle maintenance work using the three technicians in the corporation garage, the corporation was able to save a large amount of money paid to external agencies.

In the year 2022, the staff of the transport unit was 35.

Special duties performed in the year 2022

- Corporation fuel tank repair
- QR codes for fuel. 70 of 79A portion of the incoming fuel is an advance from the sector. Providing transportation facilities by obtaining and obtaining engineering guarantees

Security unit

24 hours a day by taking the services of private security department and corporate security officers to protect the real estate corporation staff of the company and maintain the discipline of the company.

Go is the main duty of security unit. In 2021, the Rakna Security Lanka Company was in charge of the private security sector. Served for the year 2022.

International Relations Unit

The International Relations Unit (International Relations Unit) is under the administrative division and there

A Unit Head and two Research Officers are working. The primary function of the International Relations Unit is to link the Sri Lanka Television Corporation with international organizations located locally and abroad. To maintain coordination and communication activities between those institutions and the television corporation. Thereby obtaining various benefits for the Sri Lanka Television Corporation. For example, the International Relations Unit organizes and coordinates the process of selecting suitable personnel for foreign scholarships, workshops, conferences etc. for all professionals of the Sri Lanka Television Corporation from international governmental institutions and non-governmental institutions. The international relations unit also carries out the process of selecting suitable television programs for international television programs. In addition to this, it is the task of the

international relations unit to connect with the local international governmental organizations (embassies) and international non-governmental organizations and work related to the television station.

Officers serving in the unit

posts

- Program production units Chief
- Research Officers - 02

Projects undertaken by the unit

The International Relations Unit coordinated more than 20 projects for the year 2022 as mentioned below. Due to the covid epidemic, there is a decrease in international programs and in particular, a number of opportunities for the corporation's officers to participate were validated due to the covid epidemic. Some were conducted online.

	The project	Country	details
1.	Langkawi Docs festival	Malaysia	Pujitha Dissanayake, Santhusa Liyanage, Chandana Seneviratne, Lasantha Rumesan, Ravi Abeywickrama presented the programs and Chandana Seneviratne's record program "never alone ever on earth" was selected for the final.
2.	KOICA Masters scholarship	south Korea	A program of South Korea International Cooperation Association. discussed with global agency and SLRC chairman
3.	Magnificent century turkey Embassy		Discussion were held with this agency to obtain Turkish tele series
4.	Regional news packages online workshop	Malaysia	Prasad Dodangodage participated
5.	ABU 6th Intercultural property and legal committee	virtual	Legal department
6.	ABU Children's Drama co production – 17th Series	virtual	This time, producer Sura NimalaJinendrasinghe was represented in the children's unit

Sri Lanka Rupavahini Corporation – Annual Report - 2022

7.	ABU ABU Children's Drama co production – 18th Series	virtual	This time the producer of the children's unit was represented by Shiran Ratnayake
8.	ABU-AVN Taming Misinformation	virtual	The news section participated
9.	ABU prizes2022	virtual	Corporation officials were informed
10.	ABU prizes Webinar (Judge's perspective) virtual	virtual	Corporation officials were informed
11.	Seoil international drama awards	south Korea	Corporation officials were informed
12.	Social media content creation	AVN	The relevant officials were informed
13.	Draft cooperation Agreement between Turkish and SLRC	Between Sri Lanka and Turkey	Steps were started to prepare the cabinet paper related to this agreement
14.	Japan prize 2022	Japan	Among the submitted designs, a proposal submitted by Lasantha Rumesan was selected for the program proposal section
15.	Asian cinema Fund	south Korea	Producer Saman Premaratne presented a proposal
16.	Tokyo Docs	Japan	The docs International Documentary Short Film Awards in Japan was held on November 19, 2022 in Tokyo, Japan. There, the short documentary film "Para Kaya Atthamma" presented by NishadiRuwanmali, producer of the Television Corporation News Department, won the award. This is the first time that a Sri Lankan has won the award at this award ceremony.
17.	ABU News Group Meeting	3-5 October 22 India	Prasad Dodangodage and Vimukthi Kariyawasam participated in the news section.
18.	BKK film festival		
19.	DMZ film festival		NishadiRuwanmali's short documentary "Para Kaya Attamma" was presented.

20.	Organizing children's Day art competition with Korean embassy in Sri Lanka	1st of October 2022	
21.	Meeting Iran cultural Council and discussing about opportunities		

Civil Engineering Unit

General at Sri Lanka Television Corporation studio complexes and regional centers (broadcasting stations)

The maintenance and repair work has been done by the Civil Engineering Unit during the year 2022.

Library

The Library of Sri Lanka Television Corporation operates under the Chief Librarian. Consists of 03 parts in terms of visuals, tapes and books. According to the estimate of the number of employees approved here, the staff composition of the library is as follows.

position	Servant quality	Nature of Position	Number of vacancies	No. of posts sanctioned	Available number
Chief Librarian	MM 1- 1	Executive	01	00	-
Librarian	JM 1-1	Non-executive	03	-	03
Senior Libraries Assistant	MA1-2	Non-executive		03 06	
Office Assistant	PL-1	Non-executive	01	03	02

By the year 2022, there will be 13 staff including 04 chief librarians and 04 library assistants, 02 library assistants, 02 senior management assistants, 02 management assistants, 02 senior office assistants and one office assistant.

The Library remained a unit under the Administrative Division and was placed under the Productive Services Division from 29 December 2022. The library fulfills a great mission to provide services to the production process of the corporation. Accordingly, under different requirements

This includes all activities from production to transmission and preservation of programs.

Television library is different and unique from normal libraries. The reason is It maintains information products in both print and audio-visual media Contributing to the process and being a library that provides information in audio and visual media.

The following projects which were implemented from the year 2020 were continued in the year 2022.

- Copying unedited scenes and archived news items to digital technology and giving them to the news section under online technology especially for news production.)
Uploading news items & visuals to the news room link)
- All programs broadcast daily under RAPA (Radio PromfinAssociatin of Korea) given by the Korean government have been very successfully carried out for conservation at the same time they are broadcast.
- Many programs that need to be preserved in beta media have now been copied and directed for preservation under HD technology.
- The information related to the books of the book library has been entered into the computer database

Record Room

1. Acceptance of files belonging to all departments and units of the corporation.
2. To document and store and preserve the said documents in the corporate archives.
3. Old documents subject to existing laws and regulations of the country regarding the misuse of documents
Creating abuse lists for

4. Misuse of relevant documents with the approval of the Director General.
5. Reissue of files required for legal or administrative purposes.

Activities performed by the Archives during the year 2022

Archive due to the fuel crisis in the country. In the first 05 months of 2027Had to close for more days. 2016 02/16/2016 until then blood 75 of 79 79 and safe for 10 years to comeFreedom of Information ActHad to keep. Hence the far-reaching charging listsArticles not processed

There was no misappropriation of documents. Based on this reason, it was necessary to limit the receipt of files belonging to all departments and units of the corporation to the archives.

The archives have continued to provide the necessary support to carry out the administrative activities of the corporation in the year 2022 by re-issuing and re-accepting files required for legal or administrative purposes.

Finance Division

The Finance Division is organized around the functions of Revenue, Payments, Salaries, Book-Keeping Recovery and the Costing Unit. The Supplies Unit too comes under the purview of the Finance Division. The Division primarily carries out the functions of financial management and financial reporting of the Corporation.

Each of the units of the Finance Division discharged its duties during the year 2022 efficiently, effectively and economically to bring about the optimum returns to the Corporation. All financial transactions that passed through these units were executed with integrity, transparency and objectivity. Payments on all programme files were made in accordance with applicable regulations and to support programme production and broadcasting. The division all took the initiative to follow up on all due payments of completed programmes and met the payment obligations by the respective deadlines.

Staff salaries and all other staff benefits were paid without any delay and statutory deductions were remitted to the respective institutions on or before the deadline.

Primary income generated from the sale of airtime and other peripheral incomes were recorded in conformity with applicable accounting principles and standards.

The Supplies Unit, coming under the preview of the Finance Division, procured all the necessary items (both capital and non-capital goods and services) to support the production, direction and telecast of programmes on the main channel Rupavahini, Chanel Eye/ Nethra.

Accurate and timely financial and management reports, generated in accordance with accounting principles and standards were submitted to other divisions and the Board of Directors to make informed and responsive decisions. Accordingly, both routine and ad-hoc (on demand) reports were compiled to meet requirements.

All major financial decisions were subjected to several reviews and the resulting conclusions formed the basis of the legal and authorized decisions made for the Corporation. In comparison with other state sector institutions the Corporation has not relied on any long term loans to finance its operations. Moreover, it has maintained reliance on short term loans and borrowings at minimum levels.

Given the current commercial and economic conditions, good financial management is indeed a challenging task. However the division has been successful in directing the Corporation's financial management so as to safeguard the financial stability and financial independence of the Corporation.

Statement of ‘Directors’ Responsibility

The Finance Act No.38 of 1971 and the Sri Lanka Rupavahini Corporation Act No.6 of 1982 require the Directors to prepare financial statements for each financial year giving a true and fair view of the state of affairs of Sri Lanka Rupavahini Corporation (hereinafter referred to as the “Corporation”).

The Directors confirm that in preparing the financial statements of the Corporation appropriate Accounting Policies and Standards have been selected, consistently applied and supported by reasonable and prudent judgments and estimates. Any material departures have been disclosed and explained in the financial statements.

Having reviewed the Corporation’s future financial projections, cash flows and current performance, the Directors consider that the Corporation has adequate resources to continue operations. The Directors have thus adopted a going concern basis in preparing financial statements.

The Directors have taken the responsibility to ensure that the Corporation maintains accounting records that disclose with reasonable accuracy the financial position of the Corporation as required by Sri Lanka Rupavahini Corporation Act No.6 of 1982 and that the financial statements comply with the Finance Act No.38 of 1971 and Sri Lanka Accounting Standards.

The Directors have taken reasonable measures to safeguard the assets of the Corporation and to establish appropriate systems of internal controls in order to prevent and detect fraud and other irregularities.

The Directors also confirm that to the best of their knowledge all taxes and levies payable by the Corporation, all contributions, levies and taxes payable on behalf of and in respect of the employees and all other known statutory obligations including retirement gratuities as were due as at the Balance Sheet date have been either duly paid or appropriately provided in the financial statements.

On behalf of the Board of Directors;

Mr. W. B . Ganegala

Chairman

Sri Lanka Rupavahini Corporation

Date: 28/02/2023

Sri Lanka Rupavahini Corporation
Statement of financial position as at 31st December 2022

	Note	2022 Rs.	2021 Rs.
ASSETS			
Non-current assets			
Property, plant and equipment	8	426,225,794	562,106,475
Intangible asset	9	57,922,979	123,067,523
Available for sale financial asset (Investment)		1,104,000	1,104,000
Deferred income tax asset		49,873,538	54,325,425
Social Welfare fund		507,517	497,517
Held to maturity financial assets	10	232,373,251	420,993,913
		768,007,079	1,162,094,854
Current assets			
Inventories	11	203,341,539	205,412,570
Trade receivables	12	198,561,834	249,164,434
Loans & receivables	13	108,889,046	139,377,666
Other receivables	14	209,428,045	252,337,404
Prepayments		1,541,490	6,143,703
Cash and cash equivalents	15	16,391,524	76,373,419
		738,153,478	928,809,196
Total assets		1,506,160,557	2,090,904,050
Equity and liabilities			

Sri Lanka Rupavahini Corporation – Annual Report - 2022

Capital and reserves			
Stated capital		760,742,424	735,742,424
Accumulated profit		(1,111,944,969)	(571,576,904)
		(351,202,545)	164,165,521
Non-current liabilities			
Government Grant for Capital Items	16	272,743,648	396,237,147
Foreign aid		31,774,244	57,780,417
Social Welfare fund payable		507,517	497,517
Defined benefit obligations	17	209,378,638	205,383,678
Bank Loan non-current portion	22.2	37,209,298	83,720,930
		551,613,344	743,619,689
Current liabilities			
Trade payables	18	101,205,291	106,751,247
Other financial liabilities	19	750,847,925	683,064,119
Other payables	20	53,143,145	46,853,453
Bank Loan current portion	22.1	55,813,953	55,813,953
Short-Term Bank Loan For ICC World Cup	22.3		
Bank overdraft	21	344,739,442	290,636,068
		1,305,749,756	1,183,118,840
Total liabilities		1,857,363,101	1,926,738,529
Total equity and liabilities		1,506,160,557	2,090,904,050

The Chief Accountant certifies that the financial statements have been prepared in compliance with the requirements of the Sri Lanka Financial Reporting Standards as laid down by the Institute of Chartered Accountants of Sri Lanka, finance act no. 38 of 1971 & Sri Lanka Rupavahini Corporation act of no. 06 of 1982.

Mr. J D P Asanga
...28/02/2023.....

Director General

Date

Mrs. A.H.E.R.P Edirisinghe
...28/02/2023.....

Chief Accountant

Date

The board of directors are responsible for the preparation and presentation of these financial statements. These financial statements were authorized for issue by the chairman on behalf of the board of directors on 26th April 2022.

Mr.W B Ganegala
...28/02/2023.....

Chairman

Date

Sri Lanka Rupavahini Corporation
Income statement for the year ended 31st December 2022

	Note	2022 Rs.	2021 Rs.
Sales	1	943,026,815	1,164,216,230
Cost of sales	3	(1,250,441,808)	(1,237,650,677)
Gross profit		(307 414,993)	(73,434,448)
Other operating income	2	376,786,877	337,717,010
Government Subsidiary	2.1	-	164,000,000
Distribution cost	4	(68,856,479)	(125,986,035)
Administrative expenses	5	(489,653,181)	(492,014,722)
Operating profit		(489,137,776)	(189,718,195)
Finance cost	6	(51,864,443)	(39,640,532)
Profit before income tax		(541,002,219)	(229,358,726)
Income tax	7	(4,451,887)	2,016,330
Profit/ (Loss) after income tax		(545,454,106)	(227,342,397)
Other Comprehensive Income			
Recognition of Actuarial Gain/ Loss		7,173,001	
Total comprehensive income for the period		(538,281,105)	(227,342,397)

Sri Lanka Rupavahini Corporation

Statement of changes in equity for the year ended 31st December 2022

	Retained earnings Rs.	Government contribution Rs.	Total Rs.
Balance at 1 st January 2021	(347,178,946)	537,742,424	190,563,478
Prior Year Client Adjustment	(146,237)	-	(146,237)
Prior Year Adjustment for Rental Income	(5,000)	-	(5000)
Prior Year Adjustment for income receivable (Education Programmes)	12,000,000	-	12,000,000
Prior Year adjustment for depreciation provision	(8,904,324)	-	(8,904,324)
Government Subsidiary	-	198,000,000	198,000,000
Comprehensive income for the period	(227,342,397)	-	(227,342,397)
Balance at 31st December 2021	(571,576,904)	735,742,424	164,165,521
Balance at 1 st January 2022	(571,576,904)	735,742,424	164,165,521
Trasuary Grant	-	25,000,000	25,000,000

Sri Lanka Rupavahini Corporation – Annual Report - 2022

Adjustment	(284)	-	(284)
G.M.M.T.L Bandara prior year Adjustment	(3500)	-	(3,500)
Prior Year adjustment for investment income receivable	(887,581)	-	(887,581)
Prior Year adjustment for revenue of Gurugedara educational programme	(980,645)	-	(980,645)
Prior year gratuity reimbursement by labour Department	58,921	-	58,921
Prior year Adjustment for cancelled cheque	(273,872)	-	(273,872)
Comprehensive income for the Year	(538,281,105)	-	(538,281,105)
Balance at 31st December 2022	(1,111,944,969)	760,742,424	(351,202,545)

Sri Lanka Rupavahini Corporation
Statement of Cash flows for the year ended 31st December 2022

	2022 Rs.	2021 Rs.
Cash Flow from operating activities		
Cash generated from operations	(195,627,411)	319,523,758
Interest paid	(22,784,178)	(22,571,459)
Defined benefits obligations paid	(31,073,872)	(50,838,297)
Purchase of intangible (Purchase of Tele drama)	(3,018,000)	(33,712,000)
Net Cash (used in)/generated from operating activities	(252,503,460)	212,402,003
Cash flows from investing activities		
Acquisition of property, plant & equipment	(5,843,339)	(210,444,328)
Proceeds from disposal of property, plant & equipment	3,000	3,000
Investment income received (Treasury Bills & Fixed Deposits)	19,476,955	30,506,734
Government grant for Reconciliation Channel Capital expenses government grant for capital	-	-

Deposit in Bank Of Ceylon Fixed Deposit from Bank Of Ceylon Torrington	-	-
Withdrawal from Bank Of Ceylon Torrington for deposit Bank Of Ceylon's - corporate Short - Term Fixed Deposit	-	-
Investment in subsidiary (Held to maturity financial asset - Fixed deposits)	188,620,662	(19,089,923)
Money transfer from BOC A/C to BOC Torrington	-	-
Money transfer from BOC A/C to BOC Corporate	-	-
Guarantee charges for Bid Bond	-	-
Money transfer fees	-	-
Winding up as a special levy remitted to the General Treasury	-	-
Maturity of Treasury Bills	-	1,671,715
Investment in subsidiary (Treasury Bills & Fixed Deposits re - invest)	-	(844,952)
Net cash used in investing activities	202,257,279	(198,197,752)
Cash flows from financing activities		-
Bank loan received	-	-
Short-term bank loan Payment for ICC World Cup	-	(54,750,000)
Bank guarantee	-	-

Bank loan payments	(63,839,087)	(70,402,668)
Net cash generated from/(used in)financing activities	<u>(63,839,087)</u>	<u>(125,152,668)</u>
(Decrease)/increase in cash and cash equivalents	(114,085,268)	(110,948,417)
Movements in cash and cash equivalents		
At beginning of month (Decrease) / increase	(214,262,649)	(103,314,232)
At end of the period	<u>(328,347,917)</u>	<u>(214,262,649)</u>
Cash Flow from Operating activities	2022	2021
	Rs.	Rs.
Net Profit Before Tax	(541,002,219)	(229,358,726)
Adjustments For		
Treasury Grant	25,000,000	-
prior Year adjustments for clients	(284)	-
Prior Year Client Adjustment	-	(146,237)
Prior Year Adjustment for rental income	-	(5,000)
Prior Year Adjustment for income receivable (Educational Programme)	-	12,000,000
prior Year adjustment for depreciation provision	(3,500)	-
prior Year adjustment for investment income receivable	(887,581)	-
prior year adjustment for revenue of Gurugedara educational programme	(980,645)	-
prior year gratuity reimbursement by labour Department	58,921	-
prior year adjustment for cancelled cheques	(273,872)	-
Government Subsidiary	-	198,000,000
Investment Income	(21,187,740)	(28,178,704)

Profit on disposals-PPE	(2,933)	(1,998)
Amortization of Foreign Aid	(26,006,174)	(28,173,355)
Contra Income	(14,359,125)	(14,026,250)
Contra Expenses	15,785,797	12,718,250
Government grant for capital items	(123,493,499)	(87,017,853)
Depreciation	141,723,953	105,702,924
Impairment of Client Debtors	7,092,603	15,067,870
Impairment of Employee Debtors	(10,387)	10,387
Impairment of Sunday Debtors	37,513	2,878,446
Losses on Disposal-PPE	-	2,463
Bank Interest	22,784,178	22,571,459
Bank Loan Interest	22,175,022	14,588,712
Amortize of intangible (Purchase of tele drama)	58,665,500	22,453,000
Amortize of intangible (Program material foreign)	-	
Amortize of intangible (In - house production tele drama)	4,828,883	4,828,883

Amortize of intangible (In - house production - others)	3,274,661	3,274,661
Transfers of intangible (Local Programmes Not telecast)		
Amortize Grant of foreign programmes (NHK) (intangible asset)	14,720,000	14,720,000
Gratuity Provision	42,241,832	30,000,000
Operating Profit/(Loss)Before Working Capital Changes	(369,819,095)	71,908,933
(Increase) Decreases in WIP	-	-
(Increase) Decreases inventories	2,071,032	(4,331,636)
(Increase) Decrease in Accounts Receivable & Others (W2)	137,552,972	92,087,527
Increase / (Decrease) in Account Payable & Others (W3)	34,567,681	159,858,934
	<u>(195,627,411)</u>	<u>319,523,758</u>

Working 02

	2022 Rs.	2021 Rs.
(Increase)Decrease in Accounts Receivable & Others(W2)		
Trade Receivables	57,869,122	144,548,226
Loans & Receivables (without treasury bills)	30,499,007	18,084,051
Other Receivables	44,582,631	(66,646,000)
Prepayments	4,602,212	(3,898,749)
	<u>137,552,972</u>	<u>92,087,527</u>

Working 3

	2022 Rs.	2021 Rs.
Increase/(Decrease)in Accounts Payable & Others(W3)		
Trade Payables	(21,331,753)	(16,893,271)
Other Financial Liability	49,609,741	147,918,243
Other Payable	6,289,693	28,833,961
	<u>34,567,681</u>	<u>159,858,934</u>

Sri Lanka Rupavahini Corporation

Notes to the financial statements

General Information

Sri Lanka Rupavahini Corporation (hereinafter referred to as the “Corporation”) was incorporated under the Sri Lanka Rupavahini Corporation Act No.6 of 1982. The Corporation operates as the National Television Broadcaster in Sri Lanka with the prime objectives of providing education, entertainment & information to a multi ethnic & multi religious Sri Lankan society.

Total number of employees of the Corporation as at 31st December 2022 was 815 (Permanent, Contract & Casual grades).

The Financial Statements of the Corporation for the year ended 31st December 2022 were authorized for issue by the chairman on behalf of board of directors on 28th of February 2023.

2. Basis of preparation and adoption of Sri Lanka Financial Reporting Standards ('SLFRS')

The Corporation prepares its financial statements in accordance with the Sri Lanka Accounting Standards ('SLFRS') issued by the Institute of Chartered Accountants of Sri Lanka and the requirements of Sri Lanka Accounting and Auditing Standards Act No. 19 of 1995.

The institute of Chartered Accountants of Sri Lanka issued a new volume of Sri Lanka Accounting Standards ('SLFRS') and to require enterprises to apply these standards effective for years beginning on or after 1 January 2012.

3. Summary of significant accounting policies

The principal accounting policies applied in the preparation of these financial statements are set out below. These policies have been consistently applied to all the years presented, unless otherwise stated.

3.1 Basis of preparation

The financial statements of the corporation have been prepared in accordance with Sri Lanka Financial Reporting Standards ('SLFRS'). The financial statements have been prepared under the historical cost convention.

No adjustments have been made for inflationary factors affecting the financial statements. The financial statements are presented in Sri Lankan rupees.

The preparation of financial statements in conformity with SLFRS requires the use of certain critical accounting estimates. It also requires management to exercise its judgment in the process of applying the Corporation's accounting policies. The areas involving a higher degree of judgment or complexity, or areas where assumptions and estimates are significant to the financial statements are disclosed in note 7.

Changes in new standards, amendments and interpretations issued but not effective for the financial year beginning 1 January 2012 and not early adopted.

1. IFRS 13, 'Fair Value Measurement' aims to improve consistency and reduce complexity by providing a precise definition of fair value and a single source of fair value measurement and disclosure requirements for use across SLFRSs.
2. IFRS 9, 'Financial instruments', addresses the classification, measurement and recognition of financial assets and financial liabilities. IFRS 9 replaces the parts of LKAS 39 that relate to the classification and measurement of financial instruments. IFRS 9 requires financial assets to be classified into two measurement categories: those measured as at fair value and those measured at amortized cost. The determination is made at initial recognition. The classification depends on the entity's business model for managing its financial instruments and the contractual cash flow characteristics of the instrument. For financial liabilities, the standard retains most of the LKAS 39 requirements. The main change is that, in cases where the fair value option is taken for financial liabilities, the part of a fair value change due to an entity's own credit risk is recorded in other comprehensive income rather than the income statement, unless this creates an accounting mismatch. The Corporation is yet to assess IFRS 9's full impact.

3.2 Currencies

(a) Functional and presentation currency

Items included in the financial statements of the Corporation are measured using the currency of the primary economic environment in which the entity operates ("the functional currency"). The financial statements are presented in Sri Lankan Rupees, which is the Corporation's functional and presentation currency.

(b) Transactions and balances

Foreign currency transactions are translated into the functional currency using the exchange rates prevailing at the dates of the transaction. Foreign exchange gains and losses resulting from the settlement of such transactions and from the translation at year-end exchange rates of monetary assets and liabilities denominated in foreign currencies are recognized in the income statement.

Foreign exchange gains and losses that relate to borrowings and cash and cash equivalents are presented in the statement of comprehensive income within ‘finance income or cost’. All other foreign exchange gains and losses are presented in the statement of comprehensive income within ‘other(losses) / gains’.

3.3 Property, plant and equipment

Land and buildings comprise transmission stations and head offices. All the property, plant and equipment are stated at historical cost less depreciation. Historical cost includes expenditure that is directly attributable to the acquisition of the items.

Subsequent costs are included in the asset's carrying amount or recognized as a separate asset, as appropriate, only when it is probable that future economic benefits associated with the item will flow to the corporation and the cost of the item can be measured reliably. The carrying amounts of replaced parts are derecognized. All other repairs and maintenance are charged to the statement of comprehensive income during the financial period in which they are incurred.

Land is not depreciated. Depreciation on other assets is calculated using the straight - line method to allocate their cost to their residual values over their estimated useful lives, as follows:

Table 1 - Depreciation Rates of PPE

The principal depreciation rates used for this purpose are:

	Rate
Buildings	2%
Computers	20%
Furniture and fittings	10%
Electronic equipment	20%
Motor vehicles	25%

Office equipment	20%
Library Stock	20%
TV Sets	20%
Other Assets	20%

The assets' residual values and useful lives are reviewed, and adjusted if appropriate, at the end of each reporting period.

An asset's carrying amount is written down immediately to its recoverable amount if the asset's carrying amount is greater than its estimated recoverable amount.

Gains and losses on disposals are determined by comparing the proceeds with the carrying amount and are recognized within 'Other(losses)/ income' in the income statement.

Some fixed Assets are fully depreciated when its original recorded cost, less any salvage value, matches its total accumulated depreciation. That Fixed assets are still in use in the Corporation and are fully depreciated, there is no additional accounting entry at all.

3.4 Financial Instruments

(A) Financial Assets

3.4.1 Classification

The Corporation classifies its financial assets in the following categories: at held to maturity, loans and receivables, and available for sale. The classification depends on the purpose for which the financial assets were acquired. Management determines the classification of its financial assets at initial recognition.

(a) Held to maturity

Held-to-maturity investments consists of fixed deposits which are non-derivative financial assets with fixed or determinable payments and fixed maturities that the corporation's management has the positive intention and ability to hold to maturity (See Note 10).

(b) Loans and receivables

Loans and receivables are non-derivative financial assets with fixed or determinable payments that are not quoted in an active market. They are included in current assets as maturities are lower than 12 months after the end of the reporting period. The

Corporation's loans and receivables comprise 'trade and other receivables' and 'cash and cash equivalents' in the balance sheet (See Note 13).

(c) Available-for-sale financial assets

Available-for-sale financial assets are non-derivatives that are either designated in this category or not classified in any of the other categories. They are included in non-current assets unless the investment matures or management intends to dispose of it within 12 months of the end of the reporting period. These consist of investment in unquoted shares in Lanka Puwath (Private) Limited.

(B) Financial Liabilities

Liabilities within the scope of IAS 39 are classified as financial liabilities at fair value through profit or loss or other liabilities, as appropriate.

A financial liability is derecognized when the obligation under the liability is discharged or cancelled or expires.

3.5 Inventories

Inventories of the corporation consist of consumable stock (Stock held for the use of the Corporation & not for sale). Therefore inventories are valued at their cost. Stock valuation is done on a first - in - first - out (FIFO) basis.

3.6 Trade Receivables

3.6 - 1 Provisions-Trade Receivables/Client Debtor

Trade receivables are carried at anticipated realizable value. A provision for impairment of trade receivables is established when there is objective evidence that the corporation will not be able to collect all amounts due according to the original terms of the receivables. Significant financial difficulties of the debtor, probability that the debtor will enter bankruptcy or financial reorganization and default payments are considered indicators that the trade receivable is impaired. The carrying amount of the asset is reduced through the

use of an allowance account, and the amount of the loss is recognized in the statement of comprehensive income within distribution cost. When a trade receivable is uncollectible, it

is written off against the allowance account for trade receivable. Subsequent recoveries of amounts previously written-off are credited against distribution cost in the income statement.

Trade receivables are recognized initially at fair value and subsequently measured at amortized cost using the effective interest method, less provision for impairment.

**Table 2 - The Client Debtors Provision as at 31/12/2022
In Rs.**

Provision as at 01/01/2022	128,164,043
Charge for the year 2022	7,092,603
Provision as at 31/12/2022	135,256,646

3.6.2 Provisions-Sundry Debtor

Tables 3 -The Sundry Debtors Provision as at 31/12/2022

	Rs.
Provision as at 01/01/2022	37,604,320
Charge for the year 2022	37,513
Provision as at 31/12/2022	37,641,833

3.6.3 Provisions - Other Receivables

3.6-3.1) Employee Loans

Employee loans constitute amounts granted to eligible employees under the following categories:

- Distress loan
- Special loan

- Transport loan
- Housing loan
- Other loan

The provision for bad debts for Employee Loans has been made only for the outstanding amounts with respect to employees who are no longer in service (either retired or resigned) with Sri Lanka Rupavahini Corporation.

Table 4 - The Employee Loan provision as at 31/12/2022

	Rs.
Provision as at 01/01/2022	145,846
Charge for the year 2022	(10,387)
Provision as at 31/12/2022	135,459

3.6.3.2) Employee Advances

Employee advances constitute amounts given to eligible employees under the following categories:

- Advance for Programmer Production
- Advance for Employees (Miscellaneous)
- Advance for Room Charges
- Advance for Foreign Travel

The provision for bad debts for employee advances has been made to reflect the amounts outstanding with respect to employees who are no longer in service (either retired or resigned) with Sri Lanka Rupavahini Corporation.

3.7 Statement of changes in equity

Trasuary Grant	25,000,000
Adjustment	(284)
G.M.M.T.L Bandara Prior Year Adjustment	(3,500)

Prior year Adjustment for Investment Income receivable	887,581
Prior year adjustment for revenue of Gurugedara educational programme	980,645
Prior year gratuity reimbursement by Labour Department	58,921
Prior year adjustment for cancelled cheque	273,872

3.8 Cash and cash equivalents

In the statement of cash flows, cash and cash equivalents includes cash in hand & bank current account balance. In the statement of financial position, bank overdrafts are shown within borrowings in current liabilities. Bank balances according to the bank statements for 31st December 2022 Bank of Ceylon Corporate branch Rs.(198,891,844.96) & Torrington branch is Rs.(7,734,736.81). People's bank Rs.50,000/=.

3.9 Trade Payables/Liabilities

Accounts payable are classified as current liabilities if payment is due within one year or less (or in the normal operating cycle of the business if longer). If not, they are presented as noncurrent liabilities. Trade payables are recognized initially at fair value.

3.10 Current and deferred income tax

The tax expense for the period comprises current and deferred tax. Tax is recognized in the income statement, except to the extent that it relates to items recognized in other comprehensive income or directly in equity. In this case, the tax is also recognized in other comprehensive income or directly in equity, respectively.

The current income tax charge is calculated on the basis of the provision of Inland Revenue Act No.10 of 2006 & subsequent amendments. Management periodically evaluates positions taken in tax returns with respect to situations in which applicable tax regulation is subject to interpretation. It establishes provisions here appropriate on the basis of amounts expected to be paid to the tax authorities.

Deferred income tax is recognized, using the liability method, on temporary differences arising between the tax bases of assets and liabilities and their carrying

amounts in the financial statements. Deferred income tax is determined using tax rates (and laws) that have been enacted or substantially enacted by the statement of financial position date and are expected to apply when the related deferred income tax asset is realized or the deferred income tax liability is settled.

Deferred income tax assets are recognized only to the extent that it is probable that future taxable profit will be available against which the temporary differences can be utilized.

Deferred income tax assets and liabilities are offset when there is a legally enforceable right to offset current tax assets against current tax liabilities and when the deferred income taxes assets and liabilities relate to income taxes levied by the same taxation authority on either the same taxable entity or different taxable entities where there is an intention to settle the balances on a net basis.

Table 5 - Deferred Tax as at 31 December 2021

Description	Book written down value	Tax written down value	Timing difference	Tax rate	DeferredTax
Property, plant & Equipment	358,102,932	180,824,420	177,278,512	28%	49,637,983
Grativity Provision & other Provisions	371,297,888	-	371,297,888	28%	(103,963,409)
					<u>(54,325,425)</u>

Note:

Total assets net book value	562,106,475
Less:	
Land	(7,660,503)
Motor vehicle (NBV) 2010	(1)
Motor vehicle (NBV) 2011	(2)

JICA Project(Grant)	(16)
Motor vehicle (Grant)	(1)
Equipment on treasury funds	<u>(196,343,020)</u>
Property, plant & equipments	<u>358,102,932</u>

Note

Gratuity provision	(205,383,678)
Provision for bad debts	
- Client	(128,164,043)
- Employee	(145,846)
- Sundry	<u>(37,604,320)</u>
	<u>(371,297,888)</u>

Table 6 - Deferred Tax as at 31 December 2022

Description	Book written down value	Tax written down value	Timing difference	Tax rate	DeferredTax
Property, plant & Equipment	261,711,881	87,105,713	174,606,168	24%	41,905,480
Gratuity Provision & other Provisions	382,412,576	-	382,412,576	24%	(91,779,018)
					<u>(49,873,538)</u>

Note:

Total assets net book value	425,712,286
Less:	
Land	(7,660,503)
Motor vehicle (NBV) 2010	(1)
Motor vehicle (NBV) 2011	(2)
JICA Project (Grant)	(16)
Motor vehicle (Grant)	<u>(1)</u>
Equipment on Treasury Funds	(156,339,882)
Property , Plant & Equipment	261,711,881

Note

Gratuity provision	(209,378,637)
Provision for bad debts	
- Client	(135,256,646)
- Employee	(135,459)
- Sundry	<u>(37,641,833)</u>
	<u>(382,412,576)</u>
Difference	(4,451,887)

3.11 Contingent Liabilities

Provisions are recognized when the corporation has a present legal or constructive obligation as a result of past events, it is probable that an outflow of resources embodying economic benefits will be required to settle the obligation, and a reliable estimate of the amount of the obligation can be made.

A total of 8 cases have been filed against the Corporation. The estimated compensation for the plaintiffs in the event of a court ruling against the corporation for all the 18 cases is Rs.933,000,000 (Schedule Annex XXXVIII)

3.12 Retirement Benefit Liabilities

Defined benefit plans define an amount of pension benefit that an employee will receive on retirement, usually dependent on one or more factors such as age, years of service and compensation.

The liability recognized in the balance sheet in respect of defined benefit pension plans is the present value of the defined benefit obligation at the end of the reporting period, together with adjustments for unrecognized past-service costs. The defined benefit obligation is calculated annually by independent actuaries using the projected unit credit method. The present value of the defined benefit obligation is determined by discounting the estimated future cash outflows using interest rates of government bonds as no active market for high-quality corporate bonds in Sri Lanka.

The gratuity liability is based on the actuarial valuation carried out by Mr. Piyal S Goonetilleke (fellow of the society of actuaries) Actuary, on 31 December 2022. The valuation is based on the Sri Lanka Accounting Standard No.19 (LKAS 19).

The key Assumptions used by the actuary include the following.

- I. Discount Rate (the rate of interest used to discount the future cash flows in order to determine the present value) 18%
- II. Rate of future salary Increase 4%
- III. Retirement Age 60 years

The corporation will continue as a going concern & Gratuity plan is not pre-funded.

Table 7-The Amount recognized in the Balance sheet

	Rs.
Balance as at 01/01/2022	205,383,678
Charge for the year 2022	42,241,832
Payments made during the year 2022	<u>(31,073,872)</u>
Total amount recognized in OCI	(7,173,001)
Balance as at 31/12/2022	<u>209,378,637</u>

Table 8- Movement in the present value of defined benefit obligation

I.	Liability for defined benefit obligation at 01/01/2022	205,383,678
II.	Recognition of actuarial Expences (Loss/ Gain)	(11,979,168)
III.	Loss/(Gain) due to change in assumptions at 31/12/2022	(67,262,987)
IV.	Transitional Liability /(Asset) recognized during the year	72,069,154
V.	Benefit paid by the plan	(31,073,872)
VI.	Current service costs	11,722,021
VII.	Interest cost	<u>30,519,811</u>
	Liability for definedbenefit obligation at 31/12/2022	<u>209,378,637</u>

Table 09 - Amount Recognised in the income statement

current service costs		
interest on obligation	11,722,021	
	30,519,811	
Amount recognized in OCI		42,241,83
recognition of actuarial Experience (Loss/Gain)	2	
Loss/Gain due to change in assumptions at 31/12/2022	(11,979,168)	
	(67,262,987)	
Transitional liability/Asset recognized during the year	72,069,154	(7,173,001)
Balance as at 31/12/2022		<u>35,068,831</u>

3.13 Grants

Grants relating to property, plant and equipment are included in non-current liabilities as deferred grants and are credited to the statement of comprehensive income on a straight-line basis over the expected lives of the related assets. Since the year 2022 grant will amortize at the time the related purchase assets transfer to the relevant accounts.

3.13.1 Local Grants

The grants have been amortized at the rate of 20% for equipment & 25% for vehicle per annum. The Corporation has received a grant from Government amounting Rs.11,500,000 (car value Rs.7,400,000 & van Rs. 4,100,000) in 2016. In the year 2017 a local grant amounting Rs. 171,000,000/= received for purchased of capital items to Reconciliation Channel & Rs. 9,000,000/= received for production of Programs for Reconciliation channel. For the year 2018 Rs. 100 million, in the year 2019 received Rs.150 million and the year 2020 it was Rs. 235 million for the purchase of capital items under national budget.

3.13.2 Foreign Grants

The Corporation has received foreign grants amounting to Rs.654,665,339 in the form of equipment. This amount has been amortized over the useful life of the equipment and the relevant amount for the year 2021 is Rs.2,596,040.18.This is shown separately under the item “ amortization of foreign aid ” in the notes to the income statement.

A foreign grant for equipment value Rs.66,773,684 .69 was received on 27/12/2012 from the government of Japan through JICA Sri Lanka.These equipment granted to the corporation for editing to create 2D & 3D animations. The amount would be amortized over its useful life (5 years) beginning from year 2013.

In the year 2017 Rs.73.6 million (Japanese Yen 52.6 million) Grant received for improvement of Japanese TV Programs of Sri Lanka Rupavahini Corporation under Accordingly Japanese Cultural grant Aid program 2015/2016. According, treasury has been agreed to release Rs.42,720,573.44 for the implementation of above project on grant basis. Year 2017, Rs.20 million had received to the SLRC and that amount shown under other income (Foreign grant for program production) in the Income statement. Remaining amount received in the year 2018 and 2019. In the year 2017 Korean grant aid project “RAPA” received for media assets management with digital archiving system valued Rs.36,198,604.65/=. In the year 2020 Rs. 7,252,063 valued follow up support for equipment provided under RAPA ODA Project.

3.14 Revenue

Revenue of the Corporation is accounted for on an accrual basis. Interest Income on investment is also recognized in the same basis.

Revenue is measured at the fair value of the consideration received or receivable. The corporation recognizes revenue when the amount of revenue can be reliably measured; when it is probable that future economic benefits will flow to the corporation.

The primary source of revenue is derived from Sale of airtime. Other sources of income recognized in the income statement are given as a note to the income statement.

3.15 Accounting for Expenditure

Expenditure of the corporation is accounted for on accrual basis, charging all expenses incurred in the day to day operations of the business and in maintaining the property, plant & equipment in a state of efficiency.

Over draft interest cost is charged to the Income Statement under financial charges as and when it is incurred.

3.16 Cash Flow Statement

The cash flow statement has been prepared using the indirect method. Cash and cash equivalents consist of cash in hand and bank current account balance.

3.17 Events after the Balance Sheet Date

All material post balance sheet events have been considered and disclosed or adjusted, where applicable.

3.18 Rupavahini Social Welfare Fund

The source of these funds was from the general public, in response to various campaigns carried out by the corporation at time of disaster situation effected to Sri Lanka.

The Account balance is given in the table below.

Table 10 -Social Welfare Fund Balance as at 31/12/2022

	Rs.
Balance as at 01/01/2022	497,517
Call Deposit interest	10,000
Fund Balance at the end of the year 2022	507,517

The Social Welfare Fund is an integrated part of statement of financial position.

4 Intangible Asset (Copyright fees paid)

Copyright fees paid to acquire telecast rights of programmes (either local or foreign) & cost of in-house produced programs (teledramas, motion pictures, films & etc) that meet the triple criteria of identifiability, control & existence of future economic benefits as defined in LKAS 38 (Intangible Assets) have been amortized based on the following policy of the corporation.

Tables 11 -The policy for amortization of acquired (or procured) programs and in-house produced programs.

Category	Amortization Policy
Acquired (or Procured) local teledramas and films	Number of runs. - If the number of runs are not exhausted as defined in the contract within the contract period then to recognize the balance amount capitalized as an expenditure at the end of the contract.
Acquired (or Procured) local programs (other than local teledramas and films)	Number of runs. - If the number of runs are not exhausted as defined in the contract within the contract period then to recognize the remaining capitalized amount as an expenditure at the end of the contract.

Acquired (or Procured) foreign films / soap operas	Number of runs. - If the number of runs are not exhausted as defined in the contract within the contract period then to recognize the balance amount capitalized as an expenditure at the end of the contract
Acquired (or Procured) foreign programmes (other than foreign films / soap operas)	Number of runs. - If the number of runs are not exhausted as defined in the contract within the contract period then to recognize the remaining capitalized amount as an expenditure at the end of the contract.
In- house productions -teledramas	- 50% in the 1st run and to amortize the balance 50% for 10 years in equal amounts.
In- house productions- programmes other than teledramas	amortize 50% in the 1st run and to amortize the balance 50% for 10 years in equal amounts.
Acquired (or Procured) foreign films and soap operas that grant rights indefinitely	- 50% in the 1st run and to amortize the balance 50% for 10 years in equal amounts.
Acquired (or Procured) programs other than films or soap operas that grant rights indefinitely	- amortize 50% in the 1st run and to amortize the balance 50% for 10 years in equal amounts.

In the case a program does not meet one or more of the triple criteria (identifiability, control & existence of future economic benefits) then the total cost associated with the program has been recognized as an expense in the first run.

Tables 12 -Copyright Fee

In Rs.	Purchase of Teledrama	Procurement of Foreign Program	In-house Produced Teledrama	Local Program not-telecast	WIP Local Program	In-house Production Others	Grant of foreign program (NHK)
Balance as at 01/01/2022	92,383,500	-	9,505,976	-	-	6,458,047	14,720,000
Addition	16,284,500	-	-	-	-	-	-
Transfer	-	-	-	-	-	-	-
Amortized for the year 2022	(58,605,500)	-	(4,828,883)	-	-	(3,274,661)	(14,720,000)
Balance as at 31/12/2022	50,062,500	-	4,677,093	-	-	3,183,385	-

5. Securities for Overdraft Facility

Depending on the size of the overdraft facility & nil margin of letter of credit, the bank may require from the Corporation to provide some security. - Therefore Rs.328 millions valued fixed deposits provided by the corporation as the security to the bank for securing the overdraft facilities & nil margin facility of letter of credit.(According to the SLFRS 1)

6. Investment Income**Tables 13 -Amounts of Investment Income in the year 2022**

Type of Investment	Amount (Rs.)
Fixed Deposits (Bank of Ceylon)	16,328,501
SMIB Fixed Deposit (State Mortgage & Investment Bank)	1,497,837
State Surplus Trust Fund	-
Special Housing Loan Scheme (State Mortgage & Investment Bank)	149,424
Fixed deposits (short term) Bank of Ceylon	2,799,922
Savings Account (Bank of Ceylon)	412,056
Total	21,187,740

7. Critical accounting estimates and judgments

Estimates and judgments are continually evaluated and are based on historical experience and other factors, including expectations of future events that are believed to be reasonable under the circumstances.

Critical accounting estimates and assumptions

The Corporation makes estimates and assumptions concerning the future. The resulting accounting estimates will, by definition, seldom equal the related actual results. The estimates and assumptions that have a significant risk of causing a material adjustment to the carrying amounts of assets and liabilities within the next financial year are addressed below.

(a) Income taxes

The Corporation is subject to income taxes in numerous jurisdictions. Significant judgment is required in determining the worldwide provision for income taxes. There are many transactions and calculations for which the ultimate tax determination is uncertain. The Corporation recognizes liabilities for anticipated tax audit issues based

on estimates of whether additional taxes will be due. Where the final tax outcome of these matters is different from the amounts that were initially recorded, such differences will impact the current and deferred income tax assets and liabilities in the period in which such determination is made.

(b) Pension Benefits

The present value of the pension obligations depends on a number of factors that are determined on an actuarial basis using a number of assumptions. The assumptions used in determining the net cost (income) for pensions include the discount rate. Any changes in these assumptions will impact the carrying amount of pension obligations.

The Corporation determines the appropriate discount rate at the end of each year. This is the interest rate that should be used to determine the present value of estimated future cash outflows expected to be required to settle the pension obligations. In determining the appropriate discount rate, the Corporation considers the interest rates of government bonds as no active market for the corporate bonds in Sri Lanka. Other key assumptions for pension obligations are based in part on current market conditions.

(c) Fair value of derivatives and other financial instruments

The fair value of financial instruments that are not traded in an active market is determined by using valuation techniques. The Corporation uses its judgment to select a variety of methods and make assumptions that are mainly based on market conditions existing at the end of each reporting period. The Corporation has used discounted cash flow analysis for various available-for-sale financial assets that are not traded in active markets.

8. Financial Risks Management

8.1 Financial risks factors

The Corporation's activities expose it to a variety of financial risks: market risk, credit risk and liquidity risk. Risk management is carried out by management under policies approved by the board of directors. Management identifies and evaluates the financial risks on a regular basis.

8.2 Market Risks

i) Foreign exchange risk

Foreign exchange risk arises when future recognized assets or liabilities are denominated in a currency that is not the entity's functional currency. The Corporation is not exposed to foreign exchange risk as the Corporation does not have foreign currency denominated receivables or payables.

ii) Interest rate risk

The risk of an adverse financial impact due to changes in the absolute level of interest rates is known as interest rate risk. The Corporation has no interest bearing borrowings as at the balance sheet date. The lease liability and the investments in treasury bills being the only instruments that carry interest are not significant. Therefore the interest rate risk is within the tolerable level.

iii) Price risk

The risk of an adverse financial impact due to changes in the commodity and equity prices is known as price risk. Even though the Corporation has investments in unquoted shares which are classified as available-for-sale, the Corporation is not exposed to price risk as these shares are not traded in an active market. The Corporation is not exposed to commodity price risk.

8.3 Credit Risk

Credit risk arises from cash and cash equivalents, deposits with banks and financial institutions as well as credit exposures to customers, including outstanding receivables and

committed transactions. Respective officers are responsible for managing and analyzing the credit risk for each of their new clients before standard payment and delivery terms and conditions are offered.

Tables 14 - Credit period Analysis for the year 2022

	2022	2021
	Rs. 000	Rs.000
Within the credit period		
0 - 1 month	88,321	93,408
Past due		
1 - 3 months	66,739	73,628
6 - 3months	14,776	37,800
More than 6 months	<u>163,922</u>	<u>172,432</u>
Total trade receivables	<u>333,758</u>	<u>377,268</u>
Impairment	<u>(135,257)</u>	<u>(128,164)</u>
Net trade receivables	<u>198,501</u>	<u>249,104</u>

9. Related party disclosures

The Corporation Carries out transactions in the ordinary course of its business with parties who are defined as related parties in Sri Lanka Accounting Standard 24 “Related Party disclosures”, the details of which are reported below.

	Name	Designation	Nature of the related party	Address
1	Mr W. B Ganegala	Chairman SLRC	No related party transaction	No.59/1,D. L Pathirage Mawatha,Gangodawila, Nugegoda
2	Mr.Deepal Chandrarathne	Board Member Chairman (Sri Lanka Film Corporation)	No related party transaction	Sri Lanka Film Corporation, Colombo 07

Sri Lanka Rupavahini Corporation – Annual Report - 2022

3	Mr.Hudson Samarasinghe	Board Member Chairman (Sri Lanka Broadcasting Corporation)	No related party transaction	Sri Lanka Broadcasting Corporation, Colombo 07
4	Prof. D.M.Ajith Dissanayake	Board Member Professor (University of Kelaniya)	No related party transaction	No. 150/2, Wataddara, Weyangoda.
5	Prof. Chaminda Rathnayake	Board Member Professor (NSBM University)	No related party transactionn	No. 136/4, Uduwana, Homagama
6	Mr.S.R.W.M.R.P Sathkumara	Board Member	No related party transaction	Illuppugamuwa, Welipennaghamulla.
7	Mr.Rakhitha Abeygunawardane	Board Member Attorney at Law	No related party transaction	No.352/1/B,Samadana Mawatha,Makola North, Makola
8	Ms.P.K.S Subhodini	Board Member Additional Secretary /Corporate	No related party transaction	Ministry of Education, Battaramulla
9	Ms.R. J. Abdeen	Board Member Director (Ministry of Finance)	No related party transaction	Ministry of Finance, Colombo 01
10	Mr. J D P Asanga	Director General	No related party transaction	No.3/4, Church Street,Standly Thilakarathne Mw, Nugegoda
11	Mr. D.M.K. Dasanayake	Acting Deputy Director General (Engineering)	No related party transaction	No, 224/1C,Malwatte Road, Arangala, Malabe

12	Mr.P.B.G Sumedha Athulasiri	Deputy Director General (Programme/ Marketing)	No related party transaction	No 234/J, Kadurugahawatte Lane, Kottikawatta
13	Ms. Prasadee Ubayasiri	Deputy Director General (Administration)	No related party transaction	No.579/A,School lane, Pelawatta, Thalangama South
14	Mrs. A.H.E.R.P. Edirisinghe	Chief Accountant	No related party transaction	No.36, Walpola, Mulleriyawa new town
15	Mr.Palitha K Wijesinghe	Director (Production Service)	No related party transaction	No. 125/3, Mahawatte Road, Wewelduwa,Kelaniya
16	Mr. Thilak Mahagamage	Director (News &Current Affairs)	No related party transaction	84-18A, School Lane, Temple's Road, Thalpathpitiya, Nugegoda
17	Mr.Chandrasiri Thambavita	Director (Education Programme)	No related party transaction	L.L 53 Malabe, Ittapana

**Sri Lanka Rupavahini Corporation
Notes to the financial statements**

No te		2022 Rs.	2021 Rs.
1	Revenue		
	Sale of TV time - channel 1	703,689,039	785,422,248
	Sale of TV time - channel Eye	120,671,834	108,247,142
	Sales of Tv time-Nethra	74,431,817	56,150,590
	Sale of TV time - contra deal	14,359,125	14,026,250

Sri Lanka Rupavahini Corporation – Annual Report - 2022

		<u>913,151,815</u>	<u>963,846,230</u>
	Sale of TV Time –Education Programme	29,875,000	200,370,000
	Total Revenue	<u>943,026,815</u>	<u>1,164,216,230</u>
2	Other operating income		
	Production income	103,486,250	98,322,000
	Youtube Viewership Contribution	1,789,175	6,908,335
	Investment income (Please refer table 11)	21,187,740	28,178,704
	Transfer fees	138,877	839,944
	Profit on disposals-property plant & equipment	2,933	1,998
	Rent from canteen	60,000	60,000
	Departmental fines	370,393	364,172
	Interest on loans to employees	4,490,528	4,716,220
	Miscellaneous income	7,724,482	15,658,687
	Amortization of foreign aid	26,006,174	28,173,355
	Royalty Reimbursement by Client	-	3
	Non-refundable tender deposits	108,877	88,685
	Registration fees	202,771	314,471
	Sale of program material	1,029,843	158,128
	Utilization of SLRC Facilities (Local)	16,967,320	17,788,745
	Income of Acting Academy	6,361,000	-
	Reimbursement of Programme Expenses	445,000	3,281,481
	Income from Diploma Course	5,108,000	11,547,222
	Sale of Nana Mihira Question Papers	31,602,140	20,892,465

Sri Lanka Rupavahini Corporation – Annual Report - 2022

	Commercial Promotinal Income	157,593	223,148
	Buddhist Programme	5,236,147	-
	Musical Chart Show	453,929	-
	Viewrship contribution – Google Asia	20,363,673	13,178,937
	Information Providing Charges	535	2,455
	Government grant for capital items	123,493,499	87,017,853
	Total other operating income	<u>376,786,877</u>	<u>337,717,010</u>
2.1	Government Subsidiary		<u>164,000,000</u>
3	Cost of sales		
3.1	Educational program expenses		
	Artiste fees	2,679,775	2,659,065
	Refreshments	624,622	258,650
	Make-up materials	5,360	108,357
	Incidental expenses	135,743	159,870
	Stationery	130	-
	Stage design	164,750	348,753
	Video cassettes & tapes	556,308	753,619
	Water Expenses	9,858	53,948
	Hire of transport facilities	7,890	27,083
	Hire of equipment facilities	185,900	226,143
	Hire of facilities (Theatre/Audio)	90,000	-
	Hire of sound equipment	226,000	-
	Electricity	2,500	2,000

Sri Lanka Rupavahini Corporation – Annual Report - 2022

	Fuel for motor vehicle	71,034	-
	Lodging	335,500	384,809
	Still Photographs	5,000	5,000
	Traveling & subsistence	230,850	312,393
	Premises	-	600
	Special Event	2,326,320	7,000
	Education Programme Expenses	<u>7,657,540</u>	<u>5,307,289</u>
	Channel Eye/Nethra		
	Artiste fees	2,151,898	642,740
	Refreshment	18,350	10,190
	Electricity reimbursement-Channel eye (Fairway Towers)	2,535,923	3,188,456
	Tower rental	2,400,000	5,940,000
	Incidental expenses	78,762	63,223
	Traveling & subsistence	6,513	3,000
	Water Expenses	3,200	12,522
	Video cassettes & tapes	154,403	97,024
	Stage design/sets	31,200	104,570
	Channel Eye Programme Expenses	<u>7,413,968</u>	<u>10,061,725</u>
3.2	General programme expenses		
	Artistes fees	16,628,147	18,473,034

Sri Lanka Rupavahini Corporation – Annual Report - 2022

Previewing & monitoring charges	71,100	156,600
Refreshment allowance	2,967,340	2,218,332
Purchase of copy/ production TV right	138,993,720	128,793,216
Stage & design/ sets/ props	1,593,200	1,295,908
Make-up materials	98,338	105,753
Video cassettes & tapes	1,041,896	1,715,961
Graphic & animation materials	-	119,111
Still photograph	20,006	34,006
Hire of equipment facilities	6,590,315	3,867,680
Incidental expenses	953,974	943,775
Water Expenses	179,465	274,399
Procurement programme materials - foreign	14,720,000	14,720,000
Traveling & subsistence	1,143,780	1,555,213
Special event	264,055	760,629
Lodging	2,522,750	2,800,500
Electricity	111,273	142,773
Hire of facilities (Theatre/Audio)	2,799,528	741,148
Hire of sound equipment	1,864,000	2,845,500
Hire of transport	740,382	644,451
Fuel for generator	16,663	11,098
Fuel for motor vehicle	277,094	(34,620)

Sri Lanka Rupavahini Corporation – Annual Report - 2022

	Premises	268,570	520,070
	General program expenses	<u>193,865,595</u>	<u>182,704,536</u>
3.3	News program expenses		
	Payments to news readers/ editors	6,600,555	6,664,295
	News gathering - Local	17,417,825	19,820,925
	News gathering - Foreign	-	7,655,366
	Incidental expences	143,836	227,571
	Satellite & related charges - Foreign	11,921	928,203
	ABU's fixed & variable charges	8,035,200	4,384,800
	Transport news vehicle	13,441,267	9,963,453
	Web streaming service	2,700,000	2,700,000
	Video cassettes & tapes	139,566	147,023
	Refreshment allowances	400,441	471,643
	Design/news sets	3,130,045	722,644
	Artistes fees	3,246,927	3,718,120
	Hire of Equipment facilities	1,118,568	1,048,568
	Water	18,550	77,091
	Hire of sound equipment	132,250	132,250
	Traveling & subsistence	192,050	433,975
	Graphic & Animation Material	-	2,250
	Premises	144,221	144,221
	Lodging	179,500	610,500
	Sets/props	495,466	428,666

Sri Lanka Rupavahini Corporation – Annual Report - 2022

	Hire of transport facilities (current affairs)	-	19,633
	Hire of facilities (Theatre/Audio) (current affairs)	401,439	168,723
	Still photographs (current affairs)	20,000	20,000
	Fuel for generator	707	
	Live streaming	2,700,000	2,700,000
	Special events	201,902	201,902
	News Program Expenses	<u>60,872,234</u>	<u>63,391,822</u>
3.4	Commercial production expenses		
	Artistes fees	657,790	431,650
	Refreshment allowance	77,585	65,500
	Stage & Design/Sets/Props	190,341	1,322,069
	Hire of transport facilities	-	8,285
	Hire of equipment facilities	195,500	58,000
	Water Expenses	26,013	3,480
	Incidental expenses	113,401	77,869
	Traveling & subsistence	134,730	151,295
	Fuel for Generator	177	-
	Lodging & Premises	527,000	511,000
	Video cassettes & tapes	127,862	24,918
	Special events	-	10,000
	Social Media Development Charges	8,878	48,223

	Commercial Production Expenses	<u>2,059,278</u>	<u>2,712,289</u>
3.5	Other production expenses		
	Salaries & other allowances (For production staff)		
	Salaries/ allowances - Permanent staff	426,137,782	405,072,680
	Salaries/ allowances - Contract staff	7,470,249	6,148,101
	Salaries/ allowances - Relief staff	6,678,045	6,064,665
	Overtime	118,691,160	146,941,778
	Corporation share of EPF	61,365,301	63,133,770
	Corporation Share of ETF	12,273,060	12,610,078
	Holiday pay	33,216,395	44,055,127
	Week-end payment for executive	1,122,188	1,660,913
	Hardship/ altitude/ heavy duty	6,011,559	5,970,483
	Duty officers/ engineers fees	1,014,525	1,357,200
	Meal allowance -Non executive	6,779,540	7,038,000
	Incentive allowance	19,472,681	22,725,120
	Transport allowance	9,186,579	10,519,740
	Encashment medical leave	1,678,559	28,322,191
	Bonus	-	79,150
	Electricity - Head office (75%)	69,751,222	69,035,851
	Fuel for generator	14,382,424	1,262,420
	Running expenses (75%)	9,658,055	6,808,976

Sri Lanka Rupavahini Corporation – Annual Report - 2022

	Repairs & maintenance - Equipment	6,202,068	9,950,614
	Tax on Foreign Programmes	110,000	-
	Commercial contra expenses	15,785,797	12,718,250
	Frequency chargers	5,413,699	4,703,089
	Acting Academy expenses	675,450	-
	Transmission Tower Rental	13,233,037	11,918,510
	Colombo – Palali link for vedio transmission	4,832,774	4,755,942
		<u>851,142,150</u>	<u>882,852,648</u>
3.6	Depreciation		
	Depreciation	127,431,043	90,620,368
	Total Cost of Sales	<u>1,250,441,808</u>	<u>1,237,650,677</u>
4	Distribution expenses		
	Agency commission	60,052,529	101,306,211
	Promotional expenses	1,185,160	6,665,580
	Ru-entertainment recorded cassette expenses	499,061	57,541
	Bad debts- Employee	(10,387)	10,387
	Bad debts- Sundry	37,513	2,878,446
	Bad debts- Clients	7,092,603	15,067,870
	Distribution Expenses	<u>68,856,479</u>	<u>125,986,035</u>
5.	Administrative expenses		

Sri Lanka Rupavahini Corporation – Annual Report - 2022

Members remuneration	1,606,167	1,846,000
Salaries/ allowances - permanent staff	142,045,927	135,024,227
Salaries/ allowances - contract staff	2,490,083	2,049,367
Salaries/ allowances - relief staff	2,226,015	2,021,555
Overtime	39,563,720	48,980,593
Corporation share of EPF	20,455,100	21,044,590
Corporation share of ETF	4,091,020	4,203,359
Holiday pay	11,072,132	14,685,042
Week-end payment for executive	374,063	553,638
Hardship/ altitude/ heavy duty	2,003,853	1,990,161
Duty officers/ engineers fees	338,175	452,400
Membership fees for professional executives	-	6,542
Contribution for pension & W&O.P	253,196	155,618
Meal allowance-Non executive	2,259,847	2,346,000
Incentive allowance	6,490,894	7,575,040
Transport allowance	3,062,193	3,506,580
Encashment medical leave	559,520	9,440,730
Incentive gratuity & compensation	1,447,031	1,950,000
Bonus	-	26,383

Sri Lanka Rupavahini Corporation – Annual Report - 2022

Recreation	-	18,000
Uniforms to staff	3,000	10,250
Premium - medical insurance scheme	23,263,261	23,533,871
Premium for accident & life insurance	1,096,941	1,141,334
Traveling & subsistence - Local	639,130	566,173
Traveling & subsistence - Mileage allowance	2,239,088	8,082,211
Traveling & subsistence - foreign	3,000	-
Incidental expenses - Foreign travel	3,451	45,247
Corporation refreshment/ entertainment	642,811	932,560
Rent, rates & taxes	16,583,220	16,760,170
Electricity & power	23,250,407	23,011,950
Telephone including rental	20,062,455	17,287,820
Security service	12,635,460	11,975,294
Postage	360,567	331,955
Printing & stationary	5,530,874	6,133,768
Newspapers & periodicals	1,228,245	1,858,650,

Sri Lanka Rupavahini Corporation – Annual Report - 2022

	Office requisites	1,526,603	8,002,639
	Losses on disposal -Property plant & equipment	-	2,463
	Sundry expenses	3,056,901	3,917,317
	Advertisement- Tender & recruitment	1,356,950	1,031,625
	Compensation for court cases	-	30,000
	Running expenses of motor vehicles	3,219,352	2,269,659
	Hire of motor vehicles	8,424,113	10,754,364
	Insurance - building & other assets	1,702,359	2,341,767
	License & insurance motor vehicle	1,379,142	778,026
	Repairs & maintenance - building	14,949,147	13,352,632
	Repairs & maintenance - Garden	678,579	1,416,118
	Repairs & maintenance - Other assets	1,231,840	1,035,839
	Water	3,857,587	2,263,230
	Grant for SLRC canteen	-	189,696
	Lodging	217,000	338,614
	Web hosting/Internet lease line	23,938	969,930
	Anniversary celebration	759,646	3,693,147
	Public addressing system charges/ rental	63,384	86,230
	Repairs of Motor vehicles	6,778,282	6,344,761
	Training expenditure - internal	101,425	230,353
	Incentive payments for production	-	10,000
	Donation	100,000	100,000

Sri Lanka Rupavahini Corporation – Annual Report - 2022

	Licence Fee & Communication Equipment	-	600,000
	Print of nana mihira Question paper	19,236,780	8,471,090
	Royalty for the broadcast songs	154,200	86,000
	Diploma Course expenses	596,283	1,107,338
	International Relationship unit expenses	-	590
	Subscription fees(Contribution to AIDB)	14,617,520	7,961,660
	Depreciation	14,292,910	15,082,556
		<u>447,411,349</u>	<u>462,014,722</u>
	Interest Charges for benefit obligation	42,241,832	30,000,000
	Administrative Expenses	<u>489,653,181</u>	<u>492,014,722</u>
6	Financial & other charges		
	Bank charges	587,954	502,433
	Bank interest - OD	22,784,178	22,571,459
	Bank loan interest	22,175,022	14,588,712
	Audit fees	1,248,000	1,248,000
	Legal fees	4,816,189	691,003
	Stamp duty	253,100	18,925
	Consultancy & Other Prof chg	-	20,000
	Financial and Other Chargers	<u>51,864,443</u>	<u>39,640,532</u>
7	Taxation		

Sri Lanka Rupavahini Corporation – Annual Report - 2022

	Profits & income exempt from tax		
	Recognized actuarial gain/Loss	7,173,001	
		<u>7,173,001</u>	
	Profit/(loss) Before Tax for the year	(538,281,105)	(229,358,726)
	Government Subsidiary	-	(164,000,000)
	Profit/(loss) Before Tax for the year (Without Government Subsidies)	(538,281,105)	(393,358,726)
	Depreciation	141,723,953	105,702,924
	Interest paid (100% Allowed)	44,959,200	37,160,171
	Corporation entertainment	642,811	932,560
	Donations	100,000	100,000
	Commercial promotional expenses (25% Disallowable)	296,290	1,666,395
	Contra expenses (25% Disallowable)	3,946,449	3,179,563
	Profit/loss on disposal	2,933	465
	Tax gain /loss on disposal	(5,495)	(5,495)
	Anniversary celebration	759,646	3,693,147
	Provisions for gratuity	42,241,832	30,000,000
	Gratuity paid	(31,073,872)	(50,838,297)

Sri Lanka Rupavahini Corporation – Annual Report - 2022

	Provisions for bad debts-Sundry	37,513	2,878,446
	Provisions for bad debts-Clients	7,092,603	15,067,870
	Provisions for bad debts-Employees	(10,387)	10,387
	Interest income	(21,187,740)	(28,178,704)
	Grant for capital items	(123,493,499)	(87,017,853)
	Capital allowances	(99,558,647)	(100,855,274)
	Amortization of foreign aid	(26,006,174)	(28,173,355)
	Business profit / (loss)	<u>597,813,689</u>	<u>(488,035,776)</u>
	Interest income	<u>28,187,740</u>	<u>28,178,704</u>
	Other Income	-	-
	Total statutory income	21,187,740	28,178,704
	35% from net profit allowable losses b/f	(7,415,709)	(9,862,546)
	Interest Paid	<u>(44,959,200)</u>	<u>(37,160,171)</u>
	Assessable income	<u>(31,187,169)</u>	<u>(18,844,013)</u>
	Qualifying payments	-	=
	Taxable income	<u>(31,187,169)</u>	<u>(18,844,013)</u>
	Tax amount (28%)	-	
	Income tax liability	-	
	Deferred tax	4,451,887	(2,016,330)
	Tax liability	4,451,887	(2,016,330)