



Invitation for Bids

Construction of Two Additional Dog Kennels for Parliament

Contract No: PS/FIN/SS/2/SP17/2025

Parliament of Sri Lanka

CONTENTS

Volume I

	Page
Invitation for bids	2 - 3
Section 01 – Instructions to Bidders.	4 - 14
Section 02 – Standard Forms (Contract)	15 - 20
▪ Letter of Acceptance	17
▪ Agreement.	18
▪ Performance Security	19
▪ Advance Payment Security.	20
Section 03 – Conditions of Contract	21 -40

INVITATION FOR BIDS (IFB)

(GOSL FUNDED PROJECTS)

Parliament of Sri Lanka

CONSTRUCTION OF TWO ADDITIONAL DOG KENNELS FOR PARLIAMENT PS/FIN/SS/2/SP17/2025

1. The Chairman of the Procurement Committee on behalf of the Parliament of Sri Lanka invites sealed bids from eligible and qualified bidders for “**Construction of Two Additional Dog Kennels for Parliament- PS/FIN/SS/2/SP17/2025**” as described below and estimated to cost approximately **LKR 4,315,408.75** (without contingencies and VAT). Contract period is **120 days** of starting date.
2. Bidding will be conducted through Shopping Procedure.
3. To be eligible for contract award, the successful bidder shall not have been blacklisted and shall meet the following requirements.
 - CIDA Registration Required
 - Specialty: **Building Construction**
 - Grade: **C8 or above**
4. Interested bidders may obtain further information from the Assistant Director (Administration) Supplies & Services Office, Parliament of Sri Lanka on tel Nos. 0112777358/364 and inspect the bidding documents from Parliamentary website URL: <https://www.parliament.lk/en/get-involved/announcement/view/85>
5. A complete set of Bidding Documents in English language may be purchased by interested bidders on the submission of a written application to the **Assistant Director (Administration) Supplies & Services Office, Parliament of Sri Lanka, Sri Jayewardenepura Kotte** from 26 May 2026 until 15 June 2026 from 09.00 a.m. to 03.00 p.m. upon payment of a non-refundable fee of Rs. 2,500.00 by cash to the Shroff Counter of Parliament or to the A/C No. 7040033 of Secretary- General of Parliament, Bank of Ceylon, Parliament Branch to the name of Secretary- General of Parliament. The original of the Bank deposit slip should be produced with the application.
6. Bids shall be delivered in duplicate and deposited to the related tender box kept at the security counter of the main entrance (i.e. Jayanthipura entrance) of the Parliamentary Complex or sent by Registered Post addressed to the **Chairperson, Procurement Committee - Construction of Two Additional Dog Kennels for Parliament, Supplies & Services Office, Parliament of Sri Lanka, Sri Jayewardenepura Kotte** to reach on or before **02.00 p.m. on 16 June 2026**.
7. Late bids will be rejected. Bids will be opened soon after closing in the presence of the bidders' representatives who choose to attend.
8. Bids shall be valid for a period of 49 days from 16.06.2026 (up to 04.08.2026).
9. All Bids shall be accompanied by a Bid Security of Sri Lankan Rupees Sixty Five Thousand (LKR **65,000.00**) obtained from a commercial bank operating in Sri Lanka approved the Central Bank of Sri Lanka in the form of an unconditional and on demand bond and shall be valid for a period of **77 days** from 16.06.2026 (up to 01.09.2026). Beneficiary of the bid security shall be **Secretary - General of Parliament, Parliament of Sri Lanka, Sri Jayewardenepura Kotte**.

10. A Pre Bid meeting will be held at the **Parliament of Sri Lanka, Sri Jayewardenepura Kotte** on **Wednesday, 03 June 2026 at 10.30 a.m.** for the above works. Please be present on time along with below documents;
1. Bid Invitation Letter
 2. National Identity Card

Please send the names and NIC numbers of the persons who will attend the Pre-Bid meeting via e-mail supplies@parliament.lk before 12.00 noon on 02 June 2026 in order to arrange entry passes.

The address referred to above is:

Chairperson

Procurement Committee - Construction of Two Additional Dog Kennels for Parliament
Parliament of Sri Lanka
Sri Jayewardenepura Kotte



P.G.P. Priyankara
Assistant Director (Administration) - Supplies & Services
for Secretary-General of Parliament

P.G.P. Priyankara
Assistant Director (Administration)
Supplies and Services Office
Parliament of Sri Lanka
Sri Jayewardenepura Kotte

SECTION - 1

INSTRUCTIONS TO BIDDERS (ITB)

Notes

Instruction to Bidders applicable to this contract shall be Second Edition - January 2007 Standard Bidding Document of Works – Minor Contracts (CIDA/SBD/03) in Sri Lanka, published by the Construction Industry Development Authority (CIDA – Successor to ICTAD), Sri Lanka.

This publication (ICTAD/SBD/03) can be purchased at the Construction Industry Development Authority (CIDA – Successor to ICTAD), Savsiripaya, 123, Wijerama Mawatha, Colombo 7.

Instructions to Bidders shall be read in conjunction with the Section 5 – Schedule given in Volume 2, which shall take precedence over Instructions to Bidders.

Instructions to Bidders will not be a part of the Contract & will cease to have effect once the Contract is signed.

Bidders are advised to consider the information printed in blue colour in the document as a checklist, when preparing their bids. However, it is the responsibility of the bidders to comply with all the requirements given in the bidding document.

TABLE OF CLAUSES
INSTRUCTIONS TO BIDDERS

<p>A. General, 6</p> <ol style="list-style-type: none"> 1. Scope of Bid, 6 2. Source of Funds, 6 3. Ethics, Fraud and Corruption, 6 4. Eligibility and Qualification of the Bidder, 6 5. One Bid per Bidder, 6 6. Cost of Bidding, 7 7. Site Visit, 7 	<p>D. Submission of Bids, 10</p> <ol style="list-style-type: none"> 19. Sealing and Marking of Bids, 10 20. Deadline for Submission of Bids, 10 21. Late Bids, 11
<p>B. Bidding Documents,7</p> <ol style="list-style-type: none"> 8. Content of Bidding Document, 7 9. Clarification of Bidding Document,7 10. Amendment of Bidding Document, 8 	<p>E. Bid Opening & Evaluation,11</p> <ol style="list-style-type: none"> 22. Bid Opening, 11 23. Process to be Confidential, 11 24. Clarification of Bids, 11 25. Examination of Bids and Determination of Responsiveness, 11 26. Correction of Errors, 12 27. Evaluation and Comparison of Bids, 12
<p>C. Preparation of Bids, 8</p> <ol style="list-style-type: none"> 11. Language of Bid, 8 12. Documents Comprising the Bid, 8 13. Bid Prices, 8 14. Currency of Bid and Payment, 9 15. Period of validity of Bids, 9 16. Bid Security and Bid Securing Declaration, 9 17. Pre-Bid Meeting, 10 18. Format and Signing of Bid, 10 	<p>F. Award of Contract, 13</p> <ol style="list-style-type: none"> 28. Award of Criteria, 13 29. Employer’s Right to Accept any Bid and to Reject any or all Bids,13 30. Award and Signing of Agreement, 13 31. Performance Security, 13 32. Advance Payment & Security, 14 33. Adjudicator, 14

Instructions to Bidders

A. General

1. Scope of Bid

- **Employer**, as named in the **Schedule**, invites bids for the construction of **Works** as summarized in the **Schedule**;
- Successful bidder Will be expected to complete the **Works** within the **Intended Completion Date** stated in the **Schedule**;
- **Intended Completion Date** shall be calculated from the **Start Date**.

2. Source of Funds

Works will be financed by the source given in the **Schedule**.

3. Ethics, Fraud and Corruption

The attention of the bidders drawn to the following guidelines of the Procurement Guidelines published by National Procurement Agency:

- Parties associated with procurement actions, namely, suppliers/contractors and officials shall ensure that they maintain strict confidentiality throughout the process;
- Officials shall refrain from receiving any personal gain from any Procurement Action. No gifts or inducement shall be accepted. Suppliers/contractors are liable to be disqualified from the bidding process if found offering any gift or inducement which may have an effect of influencing a decision or impairing the objectivity of an official.

The attention of the bidders is also drawn to the Sub-Clause 11.1 of the Conditions of Contract (Section 3) which shall apply to any bidder.

4. Eligibility and Qualification of the Bidder

- The bidder shall not be a blacklisted contractor at the time of bidding and at the time of award of contract.
- For domestic bidders, to qualify for the contract award the successful bidder should have been registered and hold a valid registration from the deadline for submission of bids until the expiry of the original validity of the bid, with the Institute for Construction Training and Development (ICTAD), under the grade and specialty given in the invitation for Bids/Section 4 - Qualification Information;
- All bidders shall provide, the information requested in the Section 4- Form of Bid and Qualification Information.
- To qualify for award of the **Contract**, bidders shall meet the minimum qualifying criteria if given in Section 4 - Form of Bid and Qualification Information.
- All bidders shall meet (any other) requirement given in the **Schedule**.

5. One Bid per Bidder

A bidder shall submit only one bid.

6. Cost of Bidding

- Bidder shall bear all costs associated with the preparation and submission of its bid;
- **Employer** will no case be responsible or liable for those costs, regardless of the conduct or outcome of the bidding process.

7. Site Visit

The bidder, at the bidder's own responsibility and risk is encouraged:

- to visit and examine the **Site**, and its surroundings where the **Works** are to be executed;
- to obtain all information that may be necessary for preparing the bid and entering into a **Contract** for construction of the **Works**;
- Costs of visiting the **Site** shall be at the bidder's own expense.

B. Bidding Documents

8. Content of Bidding Documents

Bidding documents consists of two volumes stated below and shall be read in conjunction with any addenda issued in accordance with Clause 10:

Volume 1 –

- Section 1 - Instructions to Bidders
- Section 2 - Standard Forms (Contract)
- Section 3 - Conditions of Contract

Volume 2

- Invitation for Bids
- Section 4 - Form of Bid and Qualification Information
- Section 5 - Schedule
- Section 6 - Specifications
- Section 7 - Bills of Quantities
- Section 8 - Drawings
- Section 9 - Standard Forms (Bid)

9. Clarification of Bidding Documents

- A bidder requiring any clarification of the bidding documents shall contact the **Employer** in writing or facsimile at the **Employer's** address indicated in the Invitation for Bids;
- **Employer** will respond in writing to any such request for clarification received no later than seven (7) **Days** prior to the deadline for submission of bids;
- Copies of **Employer's** response will be forwarded to all purchasers of the bidding documents, including a description of the inquiry but without identifying its source.

10. Amendment of Bidding Documents

- At any time prior to the deadline for submission of bids, the **Employer** may amend the bidding documents by issuing addenda;
- Any addendum thus issued shall be part of the bidding documents;
- Any addendum shall be communicated in writing or by facsimile to all purchasers of the bidding documents.

C. Preparation of Bids

11 Language of Bid

The bid as well as all correspondence and documents relating to the bid exchanged by the bidder and the Employer, shall be written in English language.

12. Documents Comprising the Bid

The bid submitted by the bidder shall comprise the following:

- (A) Enclosed in the envelope marked as "Original"
 - (a) Duly filled and signed Form of Bid and Qualification Information (in the format indicated in Section 4);
 - (b) Bid Security or Bid-Securing Declaration as specified
 - (c) Section 5 - Schedule;
 - (d) Section 6 - Specifications;
 - (e) Section 7 - Priced Bills of Quantities;
 - (f) Section 8 - Drawings;
 - (g) Any other information required to be completed and submitted by bidders as specified in the **Schedule**.
- (B) Enclosed in the envelope marked as "Copy"
 - (a) Duly filled and signed Form of Bid and Qualification Information (in the format indicated in Section 4);
 - (b) Section 7 - Priced Bills of Quantities.

13. Bid Prices

- The **Contract** shall be for the whole **Works**, summarized in the **Schedule**, and based on the priced Bills of Quantities;
- The bidder shall fill-in rates and prices for all items of the **Works** described in the Bills of Quantities;
- Item for which no rate or price is entered by the bidder will not be paid for by the **Employer** when executed and shall be deemed covered by the other rates and prices in the Bills of Quantities;
- All duties, taxes, and other levies payable by the **Contractor** under the **Contract**, or for any other cause, as of the date 14 **Days** prior to the deadline for submission of bids, shall be included in the rates, prices, and total Bid price submitted by the bidder,

- VAT shall not be included in the rates or prices but shall be shown separately at the space provided in the BOQ;
- Prices shall be adjusted for fluctuations in the cost of inputs only if provided for in the **Schedule**;
- If so provided, the amounts certified in each payment certificate, after deducting for Advance Payment, shall be adjusted in accordance with Sub-Clause 10.10 of Conditions of Contract and by using either Option A or Option B stated in the **Schedule**.

14. Currency of Bid and Payment

Prices shall be quoted by the bidder entirely in Sri Lanka Rupees.

15. Period of Validity of Bids

- Bids shall remain valid for the period stipulated in the Invitation for Bids after the date of bid submission specified in Clause 20:
- A bid valid for a shorter period shall be rejected by the **Employer**;
- In exceptional circumstances, prior to expiry of the period of validity of bids, the **Employer** may request that the bidders extend the period of validity for a specified additional period;
- A bidder may refuse the request;
- A bidder agreeing to the request will not be required or permitted to modify its bid, but will be required to extend the validity of its bid security for the period of the extension and in compliance with Clause 16 in all response.

16. Bid Security and Bid- Securing Declaration

- The Bidder shall furnish as part of its Bid, a bid security **or** a bid-securing declaration as specified in the **Schedule** in the format given in the Section 9.
- The bid security shall be in the **amount specified in the Schedule and shall be valid until the date specified in the Schedule**, from an agency acceptable to the Employer.
- Any bid not accompanied by a substantially responsive bid security or bid-securing declaration in accordance with this clause, shall be rejected Employer.
- The bid security or the bid-securing declaration of unsuccessful bidders shall be returned promptly upon the successful bidder furnishing the performance security
- The bid security may be forfeited or the bid-securing declaration executed:
 - (a) if a bidder withdraws its bid during the period of bid validity specified by the bidder on the Form of Bid; or

(b) if the bidder does not accept the correction of its bid price pursuant to ITB Sub-Clause 26.

(c) if the successful bidder fails within the specified time to:

(i) sign the Contract; or

(ii) furnish the required performance security.

17. Pre-Bid Meeting

The bidders designated representative is invited to attend a pre-bid meeting which, if convened and informed to the bidders, will take place at the venue and time stipulated.

18. Format and Signing of Bid

- The bidder shall prepare one original of the documents comprising the bid as described in Clause 12 and clearly marked “ORIGINAL”;
- In addition, the bidder shall submit one copy of the bid, clearly marked as “COPY”;
- In the event of discrepancy between them, the original shall prevail;
- The original and the copy of the bid shall be typed or written in indelible ink and shall be signed by a person or persons duly authorized to sign on behalf of the bidder;
- The bid shall contain no alterations or additions, except those to comply with instructions issued by the **Employer**, or as necessary to correct errors made by the bidder, in which case such corrections shall be initialed by the person or persons signing the bid.

D. Submission of Bids

19 Sealing and Marking of Bids

- The bidder shall seal the original and the copy of the bid in two inner separate envelopes and one outer envelope, duly marking the inner envelopes as “ORIGINAL” and “COPY”;
- The inner and outer envelopes shall:
 - (a) be addressed to the **Employer** at the address provided in the Invitation for Bids;
 - (b) bear the name and identification number of the **Contract** in accordance with Clause 1; and
- provide a warning not to open before the specified time and date for bid opening as defined in the Clause 22.
- In addition to the identification required above, the inner envelopes shall indicate the name and address of the bidder to enable the bid to be returned unopened in case it is declared late.

20. Deadline for Submission of Bids

Bids shall be delivered to the **Employer** at the address specified above no later than the time and date specified in the Invitation for Bids.

21. Late Bids

Any bid received by the **Employer** after the deadline for submission of bids will be returned unopened to the bidder.

E. Bid Opening and Evaluation

22. Bid Opening

- The **Employer** will open the bids, in the presence of the bidders' representatives who choose to attend at the time and in the place specified in the Invitation for Bids;
- The envelope marked as "Original" will be opened. If no envelope is marked as "Original" the Employer may open one or more envelopes;
- The bidders' names, the bid prices, the total amount of each bid, any discounts, and such other details as the **Employer** may consider appropriate, will be announced by the **Employer** at the opening;
- The Employer shall reseal all the opened envelopes in the presence of the bidders representatives.
- No bid shall be rejected at bid opening except for late bids.

23. Process to be Confidential

Information relating to the examination, clarification, evaluation and comparison of bids and recommendations for the award of a **Contract** shall not be disclosed to bidders or any other persons not officially concerned with such process until the award to the successful bidder has been announced.

24. Clarification of Bids

- To assist in the examination, evaluation, and comparison of bids, the **Employer** may, at the **Employer's** discretion, ask any bidder for clarification of the bidder's bid, including breakdowns of prices;
- The request for clarification and the response shall be in writing.

25. Examination of Bids and Determination of Responsiveness

- Prior to the detailed evaluation of bids, the **Employer** will determine whether each bid:
 - (a) meets the eligibility criteria;
 - (b) has been properly signed; and
 - (c) is substantially responsive to the requirements of the bidding documents.
- A substantially responsive bid is one which conforms to all the terms, conditions, and specifications of the bidding documents, without material deviation or reservation;
- A material deviation or reservation is one:
 - (a) which affects in any substantial way the scope, quality, or performance of the **Works**;

- (b) which limits in any substantial way, inconsistent with the bidding documents, the **Employer's** rights or the bidder's obligations under the **Contract**; or
- (c) whose rectification would affect unfairly the competitive position of other bidders presenting substantially responsive Bids.

26. Correction of Errors

- If a bid is not substantially responsive:
 - (a) it will be rejected by the **Employer**;
 - (b) and may not subsequently be made responsive by correction or withdrawal of the nonconforming deviation or reservation.
- Bids determined to be substantially responsive will be checked by the **Employer** for any arithmetic errors;
- Errors will be corrected by the **Employer** as follows:
 - (a) where there is a discrepancy between the amounts in figures and in words, the amount in words will govern;
 - (b) where there is a discrepancy between the unit rate and the line item total resulting from multiplying the unit rate by the quantity, the unit rate as quoted will govern, unless in the opinion of the Employer there is an obviously gross misplacement of the decimal point in the unit rate, in which case the line item total as quoted will govern, and the unit rate will be corrected;
 - (c) if the bid price changes by the above procedure, the amount stated in the Form of Bid shall be adjusted with the concurrence of the bidder and shall be considered as binding upon the bidder;
 - (d) if the bidder does not accept the corrected amount of bid, its shall be rejected and the bid security may be forfeited or bid-securing declaration executed in accordance with Clause 16.

27. Evaluation and Comparison of Bids

- **Employer** will evaluate and compare only the bids determined to be substantially responsive;
- In evaluating the bids, **Employer** will determine for each bid the Evaluated Bid Price by adjusting the Bid Price as follows:
 - (a) making any correction for errors;
 - (b) excluding the provision, if any, for contingencies;
 - (c) making an appropriate adjustment for any other acceptable variations or deviations; and

- (d) making appropriate adjustments to reflect discounts offered

The **Employer** reserve the right to accept or reject any variation or deviation.

- Examination for unbalanced bids; If the Employer determines that the bid is unbalanced and hence the bidder may fail in the performance of his obligations in some items within the quoted rates, a higher performance security as determined by the Employer may be requested to mitigate such risks

F. Award of Contract

28. Award Criteria

Subject to Clause 29, **Employer** will award the **Contract** to the bidder whose bid has been determined to be substantially responsive to the bidding documents and who has offered the lowest evaluated Bid Price, provided that such bidder has been determined to be:

- (a) eligible in accordance with the provisions of Clause 3; and
- (b) qualified in accordance with the provisions of Clause 4.

29. Employer's Right to Accept any Bid and to Reject any or all Bids

Employer reserves the right to:

- (a) accept or reject any bid;
- (b) cancel the bidding process;
- (c) reject all bids, at any time prior to the award of **Contract**,

Without thereby incurring any liability to the affected bidder (s).

30. Award and Signing of Agreement

- Prior to expiration of the bid validity period, the **Employer** will notify the successful bidder that his bid has been accepted.
- This letter (hereinafter and in the Conditions of Contract called the "**Letter of Acceptance**") will state the sum that the **Employer** will pay the **Contractor** in consideration of the execution, completion, and maintenance of the **Works** by the **Contractor** as prescribed by the **Contract** (hereinafter and in the **Contract** called the "**Initial Contract Price**");
- The notification of award will constitute the formation of the **Contract**;
- The **Employer** shall notify the successful bidder the date, time and venue for the signing of the agreement;
- The agreement shall be signed within 28 **Days** of the **Letter of Acceptance**

31. Performance Security

Within 14 **Days** after receipt of the **Letter of Acceptance**, the successful bidder shall deliver to the **Employer** a Performance Security:

- to an amount equivalent to 05% of Initial Contract Price; and
- in the form specified in the Section 2

32. Advance Payment and Security

Employer will provide an Advance Payment equivalent to 20% of **Initial Contract Price**, within 14 **Days** of the **Contractor** submitting an acceptable guarantee.

33. Adjudicator

- The Employer nominates the Institute for Construction Training and Development (ICTAD) as the Adjudicator. If the bidder disagrees with the nomination, the bidder shall state so in the bid, in which event the **Employer** and the **Contractor** may reach agreement on the appointment of an **Adjudicator** by mutual consent within 14 **Days** from the Letter of Acceptance.
- If mutual consent is not reached or resorted to as above then the **Adjudicator** shall be appointed by the Institute for Construction Training and Development (ICTAD) at the request of either **Party**.
- If a person is appointed as the **Adjudicator**, then he shall not be associated with the project directly or indirectly and he should be in a position to demonstrate impartiality and independence in his functions.

SECTION - 2

STANDARD FORMS (CONTRACT)

- **Letter of Acceptance**
- **Agreement**
- **Performance Security**
- **Advance Payment Security**

Note:

The bidders are advised to use the information printed in blue in this volume as a checklist when submitting the bid. Failure to non compliance with any of them may be a reason for rejection of the Bid.

The Notes on Standard Forms:

- *Bidder shall submit the completed Form of Bid Security/Bid Securing Declaration as appropriate in compliance with the requirements of the Bidding Documents.*
- *Bidders should not complete the Form of Agreement at the time of preparation of bids.*
- *The successful bidder will be required to sign the Form of Agreement, after the award of contract.*
- *Any corrections or modifications to the accepted bid resulting from arithmetic corrections, acceptable deviations, or quantity variations in accordance with the requirements of the bidding documents should be incorporated into the Agreement.*
- *The Form of Performance Security, Form of Advance Payment Security and Form of Retention Money Guarantee should not be completed by the Bidders at the time of preparation of bids.*
- *The successful bidder will be required to provide these securities in compliance with the requirements herein or as acceptable to the Employer.*

Notes on Form of Letter of Acceptance

The Letter of Acceptance will be the basis for formation of the Contract as described in Clause 30 of the Instructions to Bidders. This Form of Letter of Acceptance should be filled in and sent to the successful bidder only after evaluation of Bids and after obtaining approval from the relevant authority.

FORM OF LETTER OF ACCEPTANCE

[Letter heading paper of the procuring entity]

----- [date]

To: -----
[Name and address of the Contractor]

This is to notify you that your bid dated ----- [Date] for the. **“Construction of Two Additional Dog Kennels for Parliament, PS/FIN/SS/2/SP17/2025”** for the Contract price of Rupees -----
-----[amount in figures and words] as corrected in accordance with Instructions to Bidders and/ or modified by a Memorandum of Understanding, is hereby accepted.

You are hereby instructed to proceed with the execution of the said Works in accordance with the Contract documents.

The Start Date shall be: ----- (fill the date as Clause 6.1 of Conditions of Contract).

The amount of Performance Security is: ----- (fill as per Clause 4.4 of Conditions of Contract).

The Performance Security shall be submitted on or before ----- (fill the date as per Clause 4.4 of Conditions of Contract).

Authorized Signature : -----

Name and title of Signatory: -----

Name of Agency: -----

FORM OF AGREEMENT

This AGREEMENT, made the -----[day] day of -----[month] 20----- [year], between -----[name and address of Employer] (hereinafter called and referred to as “the Employer”), of the one part, and ----- [name and address of Contractor] (hereinafter called and referred to as “the Contractor”), of the other part:

WHEREAS the Employer desires that the Contractor execute “**Construction of Two Additional Dog Kennels for Parliament, PS/FIN/SS/2/SP17/2025**” (hereinafter called and referred to as “*The Works*”) and the Employer has accepted the Bid by the Contractor for the execution and completion of such Works and remedying of any defects therein.

The Employer and the Contractor agree as follows:

1. In this Agreement, words and expressions shall have the same meanings as are respectively assigned to them in the Contract hereinafter referred to.
2. In consideration of the payments to be made by the Employer to the Contractor as indicated in this Agreement, the Contractor hereby covenants with the Employer to execute and complete the Works and remedy any defects therein in conformity in all respects with the provisions of the Contract.
2. The Employer hereby covenants to pay the Contractor in consideration of the execute and complete the Works and the remedy defects wherein, the Contract Price or such other sum as may become payable under the provisions of the Contract at the times and in the manner prescribed by the Contract.

In Witness whereof the parties hereto have caused this Agreement to be executed the day and year aforementioned, in accordance with laws of Sri Lanka.

.....
Authorized signature of Contractor

.....
Authorized signature of Employer

COMMON SEAL

COMMON SEAL

In the presence of:
Witnesses:

1. Name and NIC No.
Signature
Address
2. Name and NIC No.
Signature
Address

FORM OF PERFORMANCE SECURITY
(Unconditional)

[Issuing Agency's Name, and Address of Issuing Branch or Office]

**Beneficiary: Secretary- General of Parliament,
Parliament of Sri Lanka
Sri Jayewardenepura Kotte**

Date: -----

PERFORMANCE GUARANTEE No.: -----

We have been informed that ----- *[name of Contractor]* (hereinafter called "the Contractor") has entered into Contract No. ----- *[Reference number of the contract]* dated ----- with you, for the **“Construction of Two Additional Dog Kennels for Parliament”** hereinafter called "the Contract").

Furthermore, we understand that, according to the conditions of the Contract, a performance guarantee is required.

At the request of the Contractor, we ----- *[name of Agency]* hereby irrevocably undertake to pay you any sum or sums not exceeding in total an amount of ----- *[amount in figures]* (-----) *[amount in words]*, upon receipt by us of your first demand in writing accompanied by a written statement stating that the Contractor is in breach of its obligation(s) under the Contract, without your needing to prove or to show grounds for your demand or the sum specified therein.

This guarantee shall expire, no later than the day of -----, 20---- *[insert date, 28 days beyond the Intended Completion Date]* and any demand for payment under it must be received by us at this office on or before that date.

[Signature(s)]

FORM OF ADVANCE PAYMENT SECURITY

----- [Name and address of Agency, and
Address of Issuing Branch or Office]

**Beneficiary: Secretary General of Parliament,
Parliament of Sri Lanka
Sri Jayewardenepura Kotte**

Date: -----

ADVANCE PAYMENT GUARANTEE No.: -----

We have been informed that ----- [name of Contractor]
(hereinafter called "the Contractor") has entered into Contract No **PS/FIN/SS/2/SP17/2025** dated -----
----- with you, for the "**Construction of Two Additional Dog Kennels for Parliament**" (hereinafter
called "the Contract").

Furthermore, we understand that, according to the conditions of the Contract, an advance payment in the sum
----- [amount in figures] (-----) [amount in words] is to be
made against an advance payment guarantee.

At the request of the Contractor, we ----- [name of issuing agency] hereby
irrevocably undertake to pay you any sum or sums not exceeding in total an amount of -----
[amount in figures] (-----) [amount in words] upon receipt by us of
your first demand in writing accompanied by a written statement stating that the Contractor is in breach of its
obligation in repayment of the Advance payment under the Contract.

The maximum amount of this guarantee shall be progressively reduced by the amount of the advance payment
repaid by the Contractor.

This guarantee shall expire on ----- [Insert the date, 28 days beyond the expected expiration
date of the Contract]

Consequently, any demand for payment under this guarantee must be received by us at this office on or before
that date.

[Signature(s)]

SECTION - 3

CONDITIONS OF CONTRACT

Conditions of Contract shall be read in conjunction with the Section 5 – Scheduled in Volume 2, which shall take precedence over the conditions of contract

Table of Clauses

CONDITIONS OF CONTRACT

<p>1.0 General Provisions</p> <p>1.1 Definitions, 24</p> <p>1.2 Interpretation, 25</p> <p>1.3 Priority of Documents, 25</p> <p>1.4 Law, 26</p> <p>1.5 Communications, 26</p> <p>2.0 The Employer</p> <p>2.1 Execution of Contract, 26</p> <p>2.2 Provision of Site, 26</p> <p>2.3 Engineer's Instructions, 26</p> <p>2.4 Approvals, 26</p> <p>3.0 The Engineer</p> <p>3.1 Engineer's Decisions, 26</p> <p>4.0 The Contractor</p> <p>4.1 General Obligations, 26</p> <p>4.2 Contractor's Representative, 26</p> <p>4.3 Subcontracting, 26</p> <p>4.4 Performance Security, 27</p> <p>5.0 Employer's Liabilities/ Risks</p> <p>5.1 Employer's Liabilities/ Risks, 27</p> <p>6.0 The Time for Completion</p> <p>6.1 Execution of the Works, 28</p> <p>6.2 Programme, 28</p> <p>6.3 Extension of Time, 28</p> <p>6.4 Late Completion, 28</p> <p>7.0 Talking Over</p> <p>7.1 Completion, 28</p> <p>7.2 Talking Over Notice, 28</p> <p>8.0 Remedying Defects</p> <p>8.1 Remedying Defects, 28</p> <p>8.2 Uncovering and Testing, 29</p>	<p>9.0 Variations and Claims</p> <p>9.1 Right to Vary, 29</p> <p>9.2 Valuation of Variations, 29</p> <p>9.3 Early Warning, 29</p> <p>9.4 Right to Claim, 29</p> <p>9.5 Variation and Claim Procedure, 30</p> <p>10.0 Contract Price and Payment</p> <p>10.1 Monthly Statements, 30</p> <p>10.2 Valuation of the Works, 30</p> <p>10.3 Interim Payments, 30</p> <p>10.4 Payment at Completion, 31</p> <p>10.5 Payment of First Half of Retention, 31</p> <p>10.6 Payment of Second Half of Retention, 31</p> <p>10.7 Final Payment, 31</p> <p>10.8 Currency, 31</p> <p>10.9 Delayed Payment, 32</p> <p>10.10 Price Adjustment, 32</p> <p>10.11 Subsequent Legislation, 34</p> <p>10.12 Advance Payment, 35</p> <p>11.0 Default</p> <p>11.1 Default by Contractor, 35</p> <p>11.2 Default by Employer, 36</p> <p>11.3 Insolvency, 36</p> <p>11.4 Payment upon Termination, 36</p> <p>12.0 Risk and Responsibility</p> <p>12.1 Contractor's Care of the Works, 37</p> <p>12.2 Force Majeure, 37</p> <p>13.0 Insurance</p> <p>13.1 Extent of Cover, 38</p> <p>13.2 Failure to Insure, 38</p> <p>14.0 Resolution of Disputes</p> <p>14.1 Dispute Resolution, 39</p> <p>14.2 Procedure for Adjudication, 39</p> <p>14.3 Arbitration, 40</p>
---	---

Conditions of Contract

1.0 General Provisions

1.1 Definitions

In the Contract as defined below, the words and expressions defined shall have the following meanings assigned to them, except where the context requires otherwise:

The Contract

- 1.1.1. The Contract is the Contract between the Employer and the Contractor to execute the Works and shall include the documents listed in Clause 1.3.
- 1.1.2. “**Contract Price**” means' the amount stated in the Letter of Acceptance and thereafter as adjusted in accordance with provisions of the Contract.
- 1.1.3. “**Specification**” means the specification of the Works included in the Contract and any modification or addition made or approved by the Engineer.
- 1.1.4. “**Initial Contract Price**” means the amount stated in the Letter of Acceptance.
- 1.1.5. **Letter of Acceptance** means the letter signed and issued by the Employer accepting the Bid submitted by the Contractor for the execution and completion of the Works.
- 1.1.6. “**Drawings**” means the Employer's drawings of the Works, and any Variation to such drawings.
- 1.1.7. “**Schedule**” means the completed pages entitled schedule, which forms part of the conditions of contract.

Persons

- 1.1.8. “**Employer**” means the Party named in the Schedule, who employs the contractor to carry out the Works.
- 1.1.9. “**Contractor**” means the person(s) who’s Bid to carry out the Works has been accepted by the Employer and named in the Agreement
- 1.1.10. “**Engineer**” is the person named in the Schedule (or any other competent person appointed by the Employer and notified to the Contractor) who is responsible for administering and supervising the execution of the work.

Such person may be an engineer, architect or any other technical person. In the absence of such appointment the Employer himself.
- 1.1.11. The “**Adjudicator**” is the Institute for Construction Training and Development (ICTAD) or a person as the case may be, in accordance with Sub-Clause 14.2 for determination of the disputes in the first instance, as provided for in Clause 14.0

- Dates, Times and Periods**
- 1.1.12. **“Start Date”** means the date 7 Days after the issue of Letter of Acceptance or any other date agreed between the Employer and Contractor.
- 1.1.13. **“Day”** means a calendar day.
- 1.1.14. **“Intended Completion Date”** means the date for completion of the Works as stated in the Schedule.
- Money and Payments**
- 1.1.15. **“Cost”** means all expenditure properly incurred (or to be incurred) by the Contractor, whether on or off the Site, including overheads and similar charges, but does not include profit
- Other Definitions**
- 1.1.16. **“Contractor's Equipment”** means all apparatus, machinery, vehicles, facilities and other things required for the execution of the Works but does not include Materials or Plant.
- 1.1.17. **“Material”** means things of all kinds (other than Plant) intended to form or forming part of the permanent work.
- 1.1.18. **“Plant”** means the machinery and apparatus intended to form or forming part of the permanent work.
- 1.1.19. **“Site”** means the places provided by the Employer where the Works are to be executed, and any other places specified in the Contract as forming part of the Site.
- 1.1.20. **“Variation”** means a change to the Specification and/or Drawings (if any), which is instructed by the Engineer under Sub-Clause 9.
- 1.1.21. **“Works”** means all the work to be performed by the Contractor specified in the Schedule including temporary work and any variation.
- 1.1.22. **“Party”** means either or either the Employer or the Contractor as the context requires.
- 1.2 Interpretation**
- Words importing persons or parties shall include firms and organizations.
 - Words importing singular or one gender shall include plural or the other gender where the context requires.
- 1.3 Priority of Documents**
- The documents forming the Contract are to be taken as mutually explanatory of one another;
 - If an ambiguity or discrepancy is found in the documents, the Engineer shall issue any necessary instructions to the Contractor;
 - the priority of the documents shall be in accordance with the order as listed below:
 1. the Contract Agreement
 2. the Letter of Acceptance

3. Memorandum of Understanding (if any).
4. the Contractor's Bid.
5. Schedule
6. these Conditions of Contract.
7. the Specifications.
8. the Drawings.
9. the Bills of Quantities.

1.4 Law The law of the Democratic Socialist Republic of Sri Lanka is applicable.

1.5 Communications Communication by any person under the Contract, can be written in official language and/or English.

2.0 The Employer

2.1 Execution of Contract The Employer shall ensure the Contract is executed within 14 Days after the date of Letter of Acceptance.

2.2 Provision of Site The Employer shall provide the Site and right of access to Site before the Start Date.

2.3 Engineer's Instructions The Contractor shall comply with all instructions given by the Engineer in respect of the Works including the suspension of all or part of the Works

2.4 Approvals No approval or consent or absence of comment by the Employer or the Engineer shall affect the Contractor's obligations.

3.0 The Engineer

3.1 Engineer's Decisions Except where otherwise specifically stated, the Engineer will decide contractual matters between the Employer and the Contractor

4.0 The Contractor

4.1 General Obligations The Contractor Shall

- Carry out the Works properly and in accordance with the Contract;
- Shall provide all supervision, labour, Materials, Plant and Contractor's equipment which may be required.

All Materials and Plant on Site shall be deemed to be the property of the Employer

4.2 Contractor's Representative The Contractor shall submit to the Employer for consent the name and particulars of the person authorized to receive instructions on behalf of the contractor.

4.3 Subcontracting The contractor shall not subcontract:

- the whole of the Works;
- any part of the Works without the consent of the Engineer.

4.4 Performance Security

The Contractor shall deliver to the Employer within 14 Days of the Letter of Acceptance a Performance Security:

- from an agency approved by the Employer;
- to an amount stated in the Schedule;
- in a form specified in the Schedule.

5.0 Employer's Liabilities/ Risks

5.1 Employer's Liabilities/ Risks

In this Contract, Employer's Liabilities/ Risks mean:

- war, hostilities (whether war be declared or not), invasion, act of foreign enemies, within the Country;
- rebellion, terrorism, revolution, insurrection, military or usurped power, or civil war, within the Country;
- riot, commotion or disorder by persons other than the Contractor's personnel and other employees, affecting the Site and/or the Works;
- use or occupation by the Employer of any part of the Works, except as may be specified in the Contract;
- design of any part of the Works by the Employer's personnel or by others for whom the Employer is responsible;
- any operation of the forces of nature affecting the Site and/or the Works, which was unforeseeable or against which an experienced contractor could not reasonably have been expected to take precautions;
- Force Majeure;
- a suspension unless it is attributable to the Contractor's failure;
- any failure of the Employer;
- physical obstructions or physical conditions other than climatic conditions, encountered on the Site during the performance of the Works, which obstructions or conditions were not reasonably foreseeable by an experienced contractor and which the contractor immediately notified to the Employer;
- any delay or disruption caused by any Variation;
- Any change in Law on or after the date 14 Days prior to the deadline for submission of bids for the Contract.

For purposes of this sub clause, Change in Law means the enactment of any new Law or change to existing legislation and the repeal of, or modification of existing laws of the country, including any regulations made, and/or directives issued thereunder, or a change in the judicial interpretation and the application of any Law by a competent Court as compared to such interpretation or application by a Court prior to the date of this agreement, and which relates to taxation or imposes rationing proscribing any activity or relates to duties and other import/export levies which in each case is beyond the control of the Contractor and materially affects the performance of the Contractor's responsibilities under the Contract.

- losses arising out of the Employer’s right to have the permanent work executed on, over, under, on or through any land, and to occupy this land for the permanent work; and
 - damage which is an unavoidable result of the Contractor’s obligations to execute the Works and to remedy ay defects.
- all of which would entitle the Contractor to an extension to the Intended Completion Date under Section 6 and/or right to claim under Section 9.

6.0 Time for Completion

6.1 Execution of the Works

The Contractor shall:

- commence the Works on the Start Date;
- proceed expeditiously and without delay;
- complete the Works within the Intended Completion Date.

6.2 Programme

The Contractor shall submit a programme for the Works to the Engineer;

- within 14 Days from the Start Date;
- in a form acceptable to the Engineer.

6.3 Extension of Time

- Subject to Clause 9.0 the Contractor shall be entitled to an extension to the Intended Completion Date if her or will be delayed by any of the Employer’s Liabilities/ Risks.

- On receipt of any application form the Contractor, the Engineer shall:
 - Consider all supporting details provided by the Contractor;
 - Extend the Intended Completion Date as appropriate.

6.4 Late Completion

If the Contractor fails to complete the Works within the Intended Completion Date, the Contractor’s only liability to the Employer for such failure shall be to pay the amount stated in the Schedule for each Day for which he fails to complete the Works.

7.0 Taking-Over

7.1 Completion

The Contractor may notify the Engineer when he considers that the Works are completed.

7.2 Taking- Over Notice

- The Engineer shall notify the Contractor when he considers that the Contractor has completed the Works stating the date accordingly;
- Alternatively, the Engineer may notify the Contractor that the Works, although not fully complete, are ready for taking over , stating the date accordingly;
- The Employer shall take over the Works upon the issue of this notice;
- The Contractor shall promptly complete any outstanding work and, subject to Clause 8.0 clear the Site.

8.0 Remedying Defects

8.1 Remedying Defects

- The Engineer may at any time prior to the expiry of the period stated in the Schedule calculated from the date of Taking-Over Notice under Sub –Clause 7.2 notify the Contractor of any defects or outstanding work;

- The Contractor shall remedy at no cost to the Employer any defects due to the Materials, Plant or workmanship not being in accordance with the Contract;
- The cost of remedying defects attributable to any other cause shall be valued as a Variation;
- Failure to remedy any defects or complete outstanding work within a reasonable time of the Engineer's notice shall entitle the Employer to carry out all necessary work at the Contractor's cost.

8.2 Uncovering and Testing

- The Engineer may give instruction as to the uncovering and/or testing of any work;
- Unless as a result of any uncovering and/or testing it is established that the Materials, Plant or workmanship are not in accordance with the Contract, the Contractor shall be paid for such uncovering and/or testing as a variation in accordance with Sub - Clause 9.1

9.0 Variations and Claims

9.1 Right to Vary

The Engineer may instruct variations.

9.2 Valuation of Variations

Variations shall be valued as follows:

- a) at a lump sum price agreed between the Engineer and the Contractor;
- b) where appropriate, at rates in the Contract; however, if the final quantity of the work done differs from the quantity in the Bills of Quantities for the particular item by more than 25 percent, provided the change exceeds one (1) percent of the Initial Contract Price, an appropriate new rates, as may be agreed shall be used for the excess quantity.
- c) in the absence of appropriate rates, the rates in the Contract shall be used as the basis for valuation, or failing which;
- d) at appropriate new rates, as may be agreed or which the Engineer considers appropriate.

9.3 Early Warning

- A Party shall notify the other as soon as he is aware of any circumstances which may delay or disrupt the Works, or which may give rise to a claim for additional payment.
- The Contractor shall take all reasonable steps to minimize these effects;
- The Contractor's entitlement to extension to the Intended Completion Date or additional payment shall be limited to the time and payment which would have been due if he had given prompt notice and had taken all reasonable steps.

9.4 Right to Claim

- If the Contractor incurs Cost as a result of any of the Employer's Liabilities / Risks, the Contractor shall be entitled to the amount of such Cost;

9.5 Variation and Claim Procedure

- If as a result of any of the Employer's Liabilities / Risk, it is necessary to change the Works, this shall be dealt with as a Variation;
- The Contractor shall submit to the Engineer an itemized make-up of the value of variation and claims within 28 Days of the instruction or of the event giving rise to the claim;
- The Engineer shall check and if possible agree the value. In the absence of agreement, the Engineer shall determine the value.

10.0 Contract Price and Payment

10.1 Monthly Statements

The Contractor shall be entitled to be paid at monthly intervals:

- a) The value of the Works executed;
- b) 80% of the invoiced value of Materials and Plant delivered to the Site, but not incorporated for permanent Works and
- c) Adjustments under Sub-Clause 10.10 and 10.11 subject to any additions or deductions which may be due.

10.2 Valuation of the Works

- The Contractor shall submit each month to the Employer a statement showing the value of the work executed less the cumulative amount certified previously;
- The Engineer shall check the Contractor's monthly statement and certify the amount to be paid to the Contractor, within 14 Days of the receipt of the Contractor's statement

10.3 Interim Payments

- Within 14 Days of delivery of each certificate by the Engineer, the Employer shall pay to the Contractor the amount shown in the certificate less retention stated in the Schedule;
- No deductions shall be made for retention after the total amount deducted as retention reached the amount stated in the Schedule;
- The Employer shall not be bound by any sum previously considered by him to be due to the Contractor;
- The Employer may withhold interim payments until he receives the performance security under Sub-Clause 4.4 (if any).

10.4 Payment Completion

The Contractor shall supply the Engineer with a detailed account of the amount that the Contractor considers payable under the Contract within 21 Days after issuing of Taking Over Notice as per Sub-Clause 7.2. The Engineer shall certify any payment that is due to the Contractor within 42 Days of receiving the Contractor's account if it is correct and complete. If it is not, the Engineer shall issue within 14 Days a schedule that states the scope of the corrections or additions that are necessary. If the account is still unsatisfactory after has been resubmitted, the Engineer shall decide on the amount payable to the Contractor and issue a payment certificate. The Employer shall pay the contractor the amount certified within 28 Days of the issue of Engineer's certification on the amount due. The contractor will be entitled to interest rate and in the same manner as stipulated in Clause 10.9 if payments as stipulated herein are delayed.

10.5 Payment of First Half of Retention

One half of the retention shall be paid by the Employer to the Contractor within 14 Days after issuing the notice under Sub-Clause 7.2.

10.6 Payment of Second Half of Retention

The remainder of the retention shall be paid by the Employer to the Contractor within 14 Days after:

Either:

- expiry of Defects Notification Period, calculated from the date of Taking-Over Notice under Sub-Clause 7.2; and
- remedying of notified defects; and
- completion of outstanding work as referred in Clause 8.0

Or

After Taking Over of the completed Works in accordance with Sub clause 7.2, and Contractor submitting a guarantee in the format given in Section 2 and valid up to 28 Days beyond the Defects Liability Period, from an agency acceptable to the Employer.

10.7 Final Payment

- Within 42 Days of the completion of the Defects Notification Period and completing of outstanding work as per Clause 8.0 above, the Contractor shall submit a final account to the Engineer together with any documentation reasonably required to enable the Engineer to ascertain the final contract value;
- Within 28 Days after the submission of this final account, the Engineer shall certify the amount due to the Contractor;
- If the Engineer disagrees with any part of the Contractor's final account, he shall specify his reasons for disagreement when making certification;
- Employer shall pay to the Contractor the amount due, within 21 Days of receipt of the certificate from the Engineer.

10.8 Currency

Payment shall be in Sri Lanka Rupees only

10.9 Delayed Payment

- If the Employer makes a late payment the Contractor shall be paid interest on the late payment in the next payment.
- Interest shall be calculated from the date by which the payment should have been made up to the date when the late payment is made at the prevailing rate of interest of 1% over the lending rate of the Central Bank to Commercial Banks.

10.10 Price Adjustments

- Unless otherwise stated in Schedule, prices shall be adjusted for fluctuations in the cost of inputs.
- If so provided, the amounts certified in each payment certificate, shall be adjusted by applying the method described below using the Option specified in the Schedule, and if no option is specified Option A is applicable.

OPTION A

The adjustment to the Payment Certificates in respect of Changes in Cost and Legislation shall be determined from following formula:

$$F = \frac{0.966 (V - V_{na})}{100} \sum_{\text{All inputs}} P_x \frac{(1_{xc} - 1_{xb})}{1_{xb}}$$

Where:

- F = price adjustment for the period concerned
- V = current valuation of work done for the period.
- V_{na} = value of non adjustable element, or value of work not considered for price variation
- P_x = input percentage of input named X.
- 1_{xc} = current indices if input X
- 1_{xb} = base indices if input X.

- (a) The “input percentage” means the percentage proportionate contribution of any input in terms of cost of the construction based on the prices prevailing for the Month, one Month prior to the Month on which the last date of submission of the Bids fails and listed under Clause mentioned numbered 10.10 in the Schedule.
- (b) The “non adjustable elements” means:
 - (i) The work done under the BOQ items that shall not be considered for valuation of price adjustment which are listed under Sub-Clause 10.10 in the Schedule;
 - (ii) Variations carried out by the Contractor on instructions of the Engineer under Sub-Clause 9.1 and are valued under Sub-Clause 9.2, based on new rates.
 - (iii) Works done under Daywork rates and Provisional Sum items

- (c) The “current valuation” means the certified gross value of work executed during the current valuation period and will include the 80% of the invoiced value of materials the contractor has delivered to site but were not consumed for the physical work done;
- (d) The “indices” means the monthly indices published by the Institute for Construction Training and Development for different Inputs;
- (e) For the purpose of determining the applicable indices the Month is defined as the time period between the first and the last day of any month in the Gregorian calendar inclusive of the first and the last day.
- (f) “base indices” means the indices for the inputs, prevailing for the Month, one Month prior to the Month on which the last date for submission of Bids falls.
- (g) In the case of first monthly statement the current indices shall be taken as the indices prevailing on the Month where the Start Date fails. For any other monthly statement or for the statement at completion the current indices shall be taken as the indices prevailing for the Month where the first date of the current variation period fails.
- (h) If the contractor fails to complete the Works within the time for completion prescribed under Sub-Clause 6.1 or extended time in accordance with Sub-Clause 6.3, the price adjustment for the work performed after the due date of completion as described above shall be made using the current indices prevailed at the due date for completion;
- (i) The weightings for each of the Inputs of cost given in this Clause shall be adjusted if, in the opinion of the Engineer, they have been rendered unreasonable, unbalanced or inapplicable as a result of varied or additional work already executed or instructed under Sub-Clause 9.1 or for any other reason.

OPTION B

- (a) The adjustment to the Payment Certificates in respect of Changes in Cost and Legislation shall be determined from following formula:

$$F = 0.869 (V - V_{na}) * \frac{(I_{tc} - I_{tb})}{I_{tb}}$$

Where

- F = price adjustment for the period concerned
- V = current valuation of work done for the period.
- V_{na} = value of non adjustable element, or value of work not considered for price variation
- I_{tc} = current indices for type of construction work
- I_{tb} = base indices of type of construction work

- (b) The “non adjustable elements” means;
 - (i) The work done under the BOQ items that shall not be considered for valuation of price adjustment which are listed under Sub-Clause 10.10 in Schedule.

- (ii) Variations carried out by the Contractor on instructions of the Engineer under Sub-Clause 9.1 and are valued under Sub-Clause 9.2, based on new rates.
 - (iii) Works done under Daywork rates and Provisional Sum items
- (c) The "current valuation" means the certified gross value of work executed during the current valuation period and will include the 80% of the invoiced value of materials the contractor has delivered to site but were not consumed for the physical work done;
 - (d) The "indices" means the monthly indices published by Institute for Construction Training and Development for different types of construction work;
 - (e) For the purpose of determining the applicable base indices the Month is defined as the time period between the first and the last day of any month in the Gregorian calendar inclusive of the first and the last day.
 - (f) "base indices" means the indices for the type of construction work, prevailing for the Month, one Month prior to the Month on which the last date for submission of Bids falls.
 - (g) In the case of first monthly statement the current indices shall be taken as the indices prevailing on the Month where the Start Date falls. For any other monthly statement or for the statement at completion the current indices shall be taken as the indices prevailing for the Month where the first date of the current valuation period falls
 - (h) If the Contractor fails to complete the Works within the time for completion prescribed under Sub-Clause 6.1 or extended time in accordance with Sub-Clause 6.3, the price adjustment for the work performed after the due date of completion as described above shall be made using the current indices prevailed at the due date for completion;
 - (i) The weightings for each of the Inputs of cost given in this Clause shall be adjusted if, in the opinion of the Engineer, they have been rendered unreasonable, unbalanced or inapplicable as a result of varied or additional work already executed or instructed under Sub-Clause 9.1 or for any other reason.

10.11 Subsequent Legislation

If, after the date 14 Days prior to the latest date for submission of bids for the Contract;

- Changes to any Statute, Ordinance, Decree, or other Law or any regulation or by-law of any local or other duly constituted authority; or
- introduction of any such State Statute, Ordinance, Decree, Law, regulation or by-law

which causes additional or reduced cost to the Contractor, other than under Sub-Clause 10.10 above, in the execution of the Contract, such additional or reduced cost shall, after due consultation with the Employer and the Contractor, be determined by the Engineer and shall be added to or deducted from the Contract Price and the Engineer shall notify the Contractor accordingly, with a copy to the Employer.

Notwithstanding the foregoing, such additional or reduced cost shall not be separately paid or credited if the same shall already have taken into account in the indexing of any inputs to the Price Adjustment Formula in accordance Sub-Clause 10.10.

10.12 Advance Payment

- The Employer shall make advance payment to the Contractor within 14 Days after Contractor furnishing a unconditional guarantee;
- The amount of advance shall be equivalent to 20% of the Initial Contract Price (less provisional sums and contingencies);
- The advance payment shall be repaid by deducting proportionate amounts from payments otherwise due to the Contractor, following the schedule of completed percentages of the Works on a payment basis;
- The advance payment shall be repaid in full when the total certified value of work reaches 90% of the Initial Contract Price;
- The guarantee shall be from bank or a company acceptable to the Employer;
- The guarantee shall remain effective until the advance payment has been repaid.

11.0 Default

11.1 Default by Contractor

Engineer may give notice referring to this Sub-Clause and stating the default of the Contractor:

- abandons the Works;
- refuses or fails to comply with a valid instructions of the Engineer;
- fails to proceed expeditiously and without delay despite a written complaint; or
- in breach of the Contract.

If the Contractor has not taken all practicable steps to remedy the default within 14 days after the Contractor's receipt of the Engineer's notice, the Employer may by issuing a letter within a further 21 Days, terminate the Contract.

The Contractor shall then demobilized from the Site leaving behind Materials and Plant and any Contractor's Equipment which the Employer instructs in his letter is to be used until the completion of the Works.

If the Contractor has engaged in corrupt or fraudulent practices; in competing for or in executing the Contract, the Employer may, after given 14 days notice to the Contractor, terminate the Contract.

For the purpose of this Sub-Clause:

“corrupt practice” means the offering, giving, receiving or soliciting of any thing of value to influence the action of a public official in the procurement process or in Contract execution;

“fraudulent practice” means a misrepresentation of facts in order to influence a procurement process or the execution of a Contract to the detriment of the Employer, and includes collusive practice among bidders (prior to or after bid submission) designed to establish bid prices at artificial non-competitive levels and to deprive the Employer of the benefits of free and open competition.

11.2 Default by Employer

- Contractor may give notice to the Employer referring to this Sub-Clause and stating the default;
 - if the Employer delayed the payments due to the Contractor for more than 42 Days; or
 - if the Employer is, despite a written complaint, in breach of the Contractor; or
 - the Engineer is not carrying out his obligations.
- If the default is not remedied within 14 days after the Employer’s receipt of this notice, the Contractor may suspend the execution of all or parts of the Works;
- If the default is not remedied within 28 days after the Employer’s receipt of the Contractor’s notice, the Contractor may by a second notice given within a further 21 Days, terminate the Contract;
- The Contractor shall then demobilize from the Site.

11.3 Insolvency

- If a Party is declared insolvent under any applicable law, the other Party may by notice terminate the Contract immediately;
- The Contractor shall then demobilize from the Site leaving behind, in the case of the Contractor’s insolvency, any Contractor’s Equipment which the Employer instructs in the notice is to be used until the completion of the Works.

11.4 Payment upon Termination

After termination, the Contractor shall be entitled to payment of the unpaid balance of the value of the Works executed and of the Materials and Plant reasonably delivered to the Site, adjusted by the following:

- a) any sums to which the Contractor is entitled under Sub-Clause 9.4;
- b) any sums to which the Employer is entitled;
- c) if the Employer has terminated under Sub-Clause 11.1 or 11.3, the Employer shall be entitled to a sum equivalent to 20% of the value of those parts of the Works not executed at the date of the termination;

- d) if the Contractor has terminated under Sub- Clause 11.2 or 11.3 the Contractor shall be entitled to the Cost of his Suspension and demobilization.

The balance due shall be paid or repaid within 28 Days of the notice of termination.

12.0 Risk and Responsibility

12.1 Contractor's Care of the Works

- The Contractor shall take full responsibility for the care of the Works from the Start Date until date of the Engineer's notice under Sub-Clause 7.2;
- Responsibility shall then pass to the Employer;
- If any losses or damage happens to the Works during the above period, the Contractor shall rectify such loss or damage so that the Works conform with the Contract;
- Unless the loss or damage happens as a result of an Employer's Liability/ Risk, the Contractor shall indemnify the Employer, the Employer's contractors, agents and employees against all loss or damage happening to the Works and against all claims or expense arising out of the Works caused by a breach of the Contract, by negligence or by other default of the Contractor, his agents or employees.

12.2 Force Majeure

- For the purpose of this Contract "Force Majeure" means an event or circumstances which is beyond the reasonable control of a Party and which makes a Party's performance of its obligations under the contract impossible or so impractical as to be considered impossible under the circumstances.
- The failure of a Party to fulfill any of its obligations under the contract shall not be considered to be a breach of, or default under, this Contract in so far as such inability arises from an event of Force Majeure, provided that the Party affected by such an event (a) has taken all reasonable precautions, due care and reasonable alternative measures in order to carry out the terms and conditions of this Contract, and (b) has informed the other Party as soon as possible about the occurrence of such an event.
- For the avoidance of doubt, Force Majeure shall not include the inability of the Employer to make payments, that are due to the Contractor, under the terms of this Contract.
- If a Party is or will be prevented from performing any of its obligations by Force Majeure, the Party affected shall notify the other Party immediately;
- If necessary, the Contractor shall suspend the execution of the Works and, to the extent agreed with the Employer, de-mobilize the Contractor's Equipment;

- If the event continues for a period of 84 Days, either Party may then give notice of termination which shall take effect 28 Days after the giving of the notice;
- After termination, the Contractor shall be entitled to payment of the unpaid balance of the value of the Works executed and of the Materials and Plant reasonably delivered to the Site, adjusted by the following:
 - (a) any sums to which the Contractor is entitled under Sub-Clause 9.4;
 - (b) the Cost of his suspension and demobilization;
 - (c) any sums to which the Employer is entitled.
- The net balance due shall be paid or repaid within 28 Days of the notice of termination.

13.0 Insurance

13.1 Extent of Cover

The Contractor shall, prior to commencing the Works, effect and thereafter maintain insurances to the amounts given below, in the joint names of the Employer and Contractor:

- a) 110% of the Initial Contract Price, for loss and damage to the Works, Materials and Plant;
- b) full replacement cost for the Contractor's Equipment;
- c) to the amount stated in the Schedule, per any event for liability of both Employer and the Contractor for loss, damage, death or injury to third Parties or their property arising out of the Contractor's performance of the Contract, including the Contractor's liability for damage to the Employer's property other than the Works; and

The Contractor shall, prior to commencing the Works, effect and thereafter maintain insurance cover to the amount not less than the amount stated in the Schedule, per any event for liability of both Employer and the Contractor and of any Employer's representative for death or injury to the Contractor's personnel except to the extent that liability arises from the negligence of the Employer, any Employer's representative or their employees. The Contractor's liability for personal injury or death of workmen shall be as provided for in the Workmen's Compensation Act and any other statutory modifications or amendments thereto.

13.2 Failure to Insure

If the Contractor fails to effect or keep in force any of the insurances referred to in the previous Sub-Clauses, or fails to provide satisfactory evidence, policies or receipts, the Employer may, without prejudice to any other right or remedy, effect insurance for the cover relevant to such default and pay the premiums due and recover the same with an additional charge of 30% of the premiums paid, as a deduction from any other monies due to the Contractor

14.0 Resolutions of Disputes

14.1 Dispute Resolution

- Any dispute of whatever nature arising out of or in relation to this agreement shall in the first instance be attempted to be resolved by way of adjudication in accordance with the adjudication procedure set forth in Clause 14.2.

14.2 Procedure for Adjudication

- Either Party may initiate the reference of a dispute to the Adjudicator by giving 07 Days notice to the other Party.
- The Institute for Construction Training and Development (ICTAD) shall be the Adjudicator, unless the bidder had disagrees and stated so in the bid, in which event the Employer and the Contractor may reach agreement on the appointment of an Adjudicator by mutual consent within 14 Days from the Letter of Acceptance.
- If mutual consent is not reached or resorted to as above then the Adjudicator shall be appointed by the Institute for Construction Training and Development (ICTAD) at the request of either Party after the expiry of 28 Days.
- If ICTAD is not accepted as the Adjudicator then the Adjudicator shall be a professional with experience relevant to the Works and in the interpretation of contractual documents. Such Adjudicator shall have no interest financial or otherwise in the Employer, the Contractor or the Engineer nor any financial interest in the Contract, except in respect of his professional fees.
- The Adjudicator's fee shall be agreed by both Parties and shall be borne by both Parties in equal amounts.
- The Adjudicator shall give the determination in writing within 28 Days or such other period of receipt of a notification of a dispute. The Adjudicator shall determine procedures as he sees fit ensuring that each Party is given a reasonable opportunity to make representations including written submissions and/or hearing witness in person.
- Each of the parties shall upon and in accordance with a request by the Adjudicator supply him free of charge such information and documents as he shall require for the purposes of the reference to him. That information and those documents shall be kept confidential by him and by the Parties.
- Adjudicator shall not act as an Arbitrator. The decision of the Adjudicator shall be deemed final and binding on the Parties if neither Party refers the dispute to arbitration in accordance with Sub-Clause 14.3 within twenty eight (28) Days of the Adjudicator's determination.

Replacement of Adjudicator

- Should the Adjudicator appointed by mutual consent of both Parties resign or die or is removed by agreement of the Parties on the basis of his unsatisfactory performance, the Parties may jointly appoint another Adjudicator and such an appointment shall be made within fourteen (14) Days after the resignation or death or removal of the Adjudicator. In the Parties are unable to reach agreement on the appointment of a new Adjudicator then the Adjudicator shall be appointed by the Institute for Construction Training and Development (ICTAD) at the request of either Party within fourteen (14) Days of receipt of such request.

14.3 Arbitration

- (a) Any dispute of whatever nature arising from, out of or in connection with this agreement, no the interpretation thereof, or the rights, duties, obligations or liabilities of any Party, or the operation, breach, termination, abandonment, foreclosure or invalidity thereof, shall be referred to by either Party to arbitration for final settlement, in accordance with the Arbitration Act No. 11 of 1995, or any amendment thereof,
- (b) Pending the award in any arbitration proceedings hereunder,
 - (i) this Contract and the rights and obligations of the Parties shall remain in full force and effect and
 - (ii) Each of the Parties shall continue to perform their respective obligations under this Contract. The termination of this Contract shall not result in the termination of any arbitration proceedings pending at the time of such termination nor otherwise affect the rights and obligations of the Parties under or with respect to such pending arbitration.
- (c) Any award rendered by the arbitral tribunal shall determine the extent to which the cost of arbitration is to be borne by each Party. The arbitration centre charges (if any) and the compensation to the arbitrator shall be equally shared by the Parties initially.

Composition of the Arbitral Tribunal:

The arbitral tribunal shall consist of a sole arbitrator who shall be appointed in the manner provided as follows;

Selection Procedure

The party desiring arbitration shall nominate three arbitrators out of which one to be selected by the other Party within 21 Days of the receipt of such nomination. If the other Party does not select one to serve as Arbitrator within the stipulated period then the Arbitrator shall be appointed in accordance with the Arbitration Act No. 11 of 1995, or any amendments thereof.

Venue & Language:

The venue of arbitration shall be in Sri Lanka.

Unless otherwise agreed to by the Parties the proceedings shall be conducted and the award shall be rendered in the English language.

CONTENTS

<u>Volume II</u>	Page
Section 4 - Form of Bid and Qualification Information	02
Form of bid	03
Qualification Information	04
Section 5 - Schedule	05
Schedule	06
Additional clause	09
Section 6 – Specifications	10
Technical specification	11
Section 7 - Bill of Quantities and Pricing Preambles	12- 35
Section 8 – Drawings	36
Section 9- Standard Forms (Bid)	37- 40
Bid Security	39
Check List for Bidders	40

SECTION - 4

FORM OF BID

AND

QUALIFICATION INFORMATION

FORM OF BID

Construction of Two Additional Dog Kennels for Parliament PS/FIN/SS/2/SP17/2025

To: Secretary- General of Parliament,
Parliament of Sri Lanka
Sri Jayewardenepura Kotte

Gentleman,

1. Having examined the Standard Bidding Document - Procurement of Works - Minor Contracts [ICTAD/SBD/03 - Second Edition, January 2007] Schedule, Specifications, Drawings and Bills of Quantities and Addenda for the execution of the above-named Works, we/I the undersigned, offer to execute and complete such Works and remedy any defect therein in conformity with the aforesaid Conditions of Contract, Schedule, Specifications, Drawings, Bill of Quantities and Addenda for the sum of Sri Lankan Rupees(LKR.....) or such other sums as may be ascertained in accordance with the said Conditions.
2. We/I acknowledge that the Schedule forms part of our Bid.
3. We/I undertake, if our Bid is accepted, to commence the Works as stipulated in the Schedule, and to complete the whole of the Works comprised in the Contract within the time stated in the Schedule.
4. We/I agree to abide by this Bid for the period of **49 Calendar Days** or any extended period and it shall remain binding upon us and may be accepted at any time before the expiration of that period.
5. Unless and until a formal agreement is prepared and executed this Bid, together with your written acceptance thereof, shall constitute a binding contract between us/me.
6. We/I understand that you are not bound to accept the lowest or any Bid you may receive.
Dated this day of 2026 in the capacity of duly authorized to sign tenders or and on behalf of.....

(IN BLOCK CAPITALS)

Signature :

Name :.....

Designation :.....

Address :

Witness

Signature :

Name :.....

Designation :.....

Address :

Qualification Information

(To be completed by the bidder and submitted all proofed document, with the Bid)

	Eligibility Requirement	Bidder's Qualification.
CIDA Registration		
Registration number		(attach certified copies of relevant pages from the registration book)
Grade	C8 or above	
Specialty	Building Construction	
Expiry Date		
Blacklisted Contractors		
Have you been declared as a defaulted contractor by NPA or any other Agency?		(Yes/No)
IF yes provide details		
VAT Registration Number		(attach certified document)
Construction Program	(attach as annex)	
Legal status	(Public company / Private Company / Partnership/Sole proprietor) (attach certified document)	
	Eligibility Requirement	Bidder's Qualification
Qualification and experience of Key staff.	Category, Experience and Qualifications	Required Nos.
	Technical Officer, (NDES/NDT /NCT/ HNNT with three Years' experience)	01
Past performance for similar capacity during last 5 years	Attached relevant proof documents	

- ❖ If any of the columns in this form are insufficient for the particulars required, such particulars may be given in a separate schedule.

Signature of the Bidder

SECTION - 5

SCHEDULE

Note:-

This section shall be read in conjunction with Section 1 – Instructions to Bidders and Section 3 – Conditions of Contract and is intended to provide specific information in relation to corresponding clauses 1 & 3. Whenever there is an ambiguity, the provisions in Section 5 – Schedule shall supersede those provided in the Section 1 – Instructions to Bidders and Section 3 – Conditions of Contract.

SCHEDULE

ITB Clause	Conditions of Contract Clause	Item	Data
1	1.1.8	Employer is:	Secretary- General of Parliament Parliament of Sri Lanka Sri Jayewardenepura Kotte
		Employer's Representative	Assistant Director (Administration) Supplies & Services Office, Parliament of Sri Lanka, Sri Jayewardenepura Kotte
	1.1.10	Engineer is:	Co- ordinating Engineer Department of Co- ordinating Engineer Parliament of Sri Lanka, Sri Jayewardenepura Kotte
1 & 13	1.1.21	Summary of Works	Demolishing, Excavation and Earth Work, Concrete Work, Block Work, Roof Work, Doors and Windows, Plumbing, Wall Finishes, Floor Finishes, Painting, Electrical Installations
		Located at	Parliament of Sri Lanka
		Contract Name	Construction of Two Additional Dog Kennels for Parliament
		Contract No	PS/FIN/SS/2/SP17/2025
1	1.1.14	Intended completion date	Intended Completion Date is 120 Calendar days from Start date
2		Source of Funds	The Source of fund is Government of Sri Lanka
3		Eligibility	Shall be registered with the Constructions Industrial Development Authority (CIDA), under the Grade C8 or above Specialty – Building Construction
12		Documents of Bid	The Bid Submitted by the bidder shall comprise the followings: i. Enclosed in the envelope marked as "ORIGINAL" (a) Duly filled and signed form of Bid and Qualification information (b) Bid Security (c) Section 05- Schedule (d) Section 06- Specifications (e) Section 07- Priced Bill of Quantities (f) Section 08- Drawings Bidder Shall complete the schedules attached in section 05 if required to be completed ii. Enclosed in the envelope marked as "COPY" (a) Duly filled and signed form of Bid and Qualification information (b) Section 07 - Priced Bill of Quantities

ITB Clause	Conditions of Contract Clause	Item	Data
13	10.10	Price adjustment	The contract is not subjected to price adjustment in accordance with sub clause 10.10 of the condition of contract
16		Bid Security	<p>Bid Security: Bid shall include a Bid Security (issued by a commercial Bank approved by the Central Bank of Sri Lanka) included in Section 9 or by a receipt of cash deposit to the Account of Secretary- General of Parliament (Acc. No 7040033 of Bank of Ceylon).</p> <p>The amount of the Bid Security shall be Rs. 65,000.00 and valid until 01 September 2026</p>
31	4.4	Performance Security	<p>The amount of Performance Security required is 5% of initial Contract price.</p> <ol style="list-style-type: none"> 1. Securities & Guarantees should be issued by a Commercial bank of Sri Lanka approved by the Central Bank. 2. Alternatively, the Bidder can pay cash to Shroff of the employer. No Interests will be paid on cash deposits When the time of release
	6.4	Late Completion	The amount to be paid is 0.05% of the contract value per day subjected to maximum of 10% of Initial Contract price.
	8.1	Notification of Defects	The period for Defects Notification is 365 Days from Taking Over.
	10.3	Retention	<p>The amount of retention is 10% of certified work done.</p> <p>The maximum amount of retention is 5% of Initial Contract Price</p>
	10.12	Advance Payments	Upon submission of a valid Advance Payment Guarantee issued by a Commercial bank of Sri Lanka approved by the Central Bank, the selected Contractor is entitled to obtain mobilization advance amount maximum up to 20% of the award sum.
	13.1 (c)	Insurance third party	Minimum amount for third party insurance is Rs.100, 000.00 per occurrence with the number of occurrences unlimited.
	13.1	Insurance for Contractor's Personnel	Minimum amount for insurance for contractor's personnel is Rupees hundred thousand. (Rs.100,000.00)
33	1.1.11	Adjudicator	The adjudicator is Institution of Engineers, Sri Lanka (IESL) or a person as the case may be, in accordance with sub clause 14.2 for determination of the disputes in the first instance as provided for in Clause 14.

ITB Clause	Conditions of Contract Clause	Item	Data
14.0		Resolution of Disputes	Any dispute of whatever nature arising out of in relation to this agreement shall in the first instant be attempted to be resolved by way of adjudication procedure set forth in Clause 14.2

ADDITIONAL CLAUSES

Value added
Taxes (VAT)

VAT Component shall not be included in the rates. The amount written.

In the Form of bid shall be without VAT.

If bidder is registered for VAT, the bidder shall indicate the amount of VAT claimed separately at the end of the Bill of Quantities, in addition to the net value of the Bid, along with VAT registration number. The amount written on the form of Bid shall be without VAT. Any Bidder who does not declare his VAT registration number will be liable for rejection of his Bid.

If any Bidder is not registered for VAT, he shall indicate the net value of the Bid. Under this category Bidder shall obtain a letter from the Commissioner of Inland Revenue Department, certifying the company has not been registered for VAT, Shall be attached to the Bid. Any Bidder who does not comply with this requirement will be liable for rejection of his Bid.

The Same VAT percentage will be applicable to any extra works and variation.

SECTION - 6

SPECIFICATIONS

SPECIFICATIONS

1. All material and constructions should conform to relevant standards specified in documents of Construction Industry Development Authority (CIDA) unless specified otherwise in the Contract Documents.
2. Use of all materials and constructions are subject to the satisfaction of the Employer/Architect/Engineer.
3. The works under the contract agreement shall be executed in accordance with specifications given in the following publications issued by the Construction Industry Development Authority (CIDA), Savsiripaya, 123, Wijerama Mawatha, Colombo 07 as applicable. The Specifications given in this Document, if any, shall take precedence over the CIDA documents wherever relevant.
 - i. Building Construction Works.
Publication No. SCA/4 (Vol.01)
Specification for Building Work Vol. (1) , Sri Lanka.
3rd Edition (Revised) July 2004
 - ii. Building Construction Works.
Publication No. SCA/4 (Vol. 11)
Specification for Building Work Vol. (11) , Sri Lanka.
2nd Edition (Revised) October 2001
 - iii. Electrical & Mechanical Works.
Publication No. SCA/8
Specification for Electrical & Mechanical Works associated with Building and Civil Engineering, Sri Lanka.
2nd Edition (Revised) August 2000

Eligible Bidders are expected to be fully acquainted with the above documents and hence these will not be issued to the Bidders with this Document.

Bidders may purchase same if necessary, from Construction Industry Development Authority (CIDA), 123, "Savsiripaya", Wijerama Mawatha, Colombo 07.

SECTION - 7
BILLS OF QUANTITIES,
AND
PRICING PREAMBLES

**CONSTRUCTION OF PROPOSED ADDITIONAL DOG KENNEL'S NEAR
THE EXISTING KENNELS - PARLIAMENT OF SRI LANKA, SRI
JAYEWARDENEPURA KOTTE**

Bill No -01 Preliminaries

Item	Descriptions	Mode of payment category	Unit	Amount.
	<p>Note:-</p> <p>It is mandatory that the bidder carryout a thorough inspection of the site prior to the submission of the BOQ</p> <p>Any discrepancies in the BOQ/Drawings and site conditions and the resulting issues should be brought to the attention of the authority prior to the closing of the bid submission and any reasonably perceivable issues in the regard brought forward after the closing of the bid submission will not be entertained.</p> <p>It is highly recommendation to use SLS,ISO & BS standards for Building materials, electrical items, sanitary fittings, PVC products and iron monger etc.</p> <p>Usable building components will be hand over to the client or his representative.</p>			
	Mode of Payment	Category		
	<p>Reimbursement of actual cost on submission of the relevant document acceptable to the Engineer plus 5% of the actual cost of obtaining the insurance Policies and Securities.</p>		A	
	<p>To be paid on signing of the formal Contract Agreement.</p>		B	

Item	Descriptions	Mode of payment category	Unit	Amount.
	60% on completion of temporary buildings or structures.30% in equal instalments over the contract period and balance 10% on dismantling and removal on completion.		C	
	Paid on satisfactorily completion of the item.		D	
	In equal instalments over the contract period.		E	
	Mode of payment to be mutually agreed between Contractor and the Employer at the commencement of contract in relation to the programme of work.		F	
	On the completion of Works		G	
	The recommended percentages may be adjusted by the Employer/Consultant to suit the particular Project.			
	<u>Insurance and Securities.</u>			
1	Provisional sum for providing a Performance Security.(Documents to be submitted)	A	Item	
2	Provisional sum for providing an Advance payment Security.(Documents to be submitted)	A	Item	
	<u>Contractor's facilities.</u>			
3	Allow lump sum for providing telephone and facsimile facilities, electricity and water services for the contractor's site for their use in connection with the works.	D	Item	
4	Allow lump sum for maintenance, rental, consumption charges etc. for telephone and facsimile facilities, electricity and water services for the Contractor's site office for their use in connection with the works.	E	Item	

Item	Descriptions	Mode of payment category	Unit	Amount.
5	<p><u>Construction management and supervision.</u></p> <p>Allow lump sum for employing suitably qualified and Experienced technical personnel on full time basis for Construction Management services at the site.</p> <p>01 Technical officer DES/NDT/NCT or equivalent with 05 years experiences.</p>	E	Item	
6	<p><u>Health, safety and environment.</u></p> <p>Allow lump sum for providing and maintaining a first aid box and regular supply of medicine, linen etc.</p>	E	Item	
8	<p>Allow lump sum for demobilization, removal of all rubbish and debris and clearing up site on completion, leaving all in good order and handing over.</p>	G	Item	
9	<p><u>Miscellaneous.</u></p> <p>Allow lump sum for stamp duty in accordance with the prevailing regulations of the government.</p>	B	Item	
	Sub total carried to summary		Rs	

**CONSTRUCTION OF PROPOSED ADDITIONAL DOG KENNEL'S NEAR THE EXISTING
KENNELS - PARLIAMENT OF SRI LANKA, SRI JAYAWARDENEPURA, KOTTE**

Bill No - 02 Construction 2 Cannel Cage

Item	Descriptions	Unit	Qty	Rate	Amount.
1.0	<p><u>A-Demolishing</u> Demolishing Existing building, Huts, Water Tank, existing concrete floor (mass) demolished materials removal from site and disposed debris as directed</p> <p><u>B-Excavation and Earth Work</u> Rate shall include for (a) Trimming sides keeping clean and consolidating bottom of bases and trenches etc., leveling and consolidating where required under slabs or slab floor layers.</p> <p>(b) Back filling with selected excavated materials or with imported materials and disposal of surplus excavated materials from site as specified and directed.</p> <p>(c) Any necessary additional excavations for working space, planking and strutting , Shoring or any other from of supporting earth ,formwork, Damp proof work etc. as excavation measured net unless otherwise specified in item description</p> <p>(d) Any other work which are not specified as the items in BOQ but indicated in the tender drawings</p>		Provisuonal sum		200,000.00
2.0	Clearing site including removal all small trees not exceeding 0.5 m girth bushes and removal debris from site	Item	1.00		
3.0	Excavation for beam for not exceeding 1.0 m deep in any materials except rock and all removing soil away from site	m ³	1.50		
4.0	Filling with selected excavated earth well rammed and consolidated in making up levels under floor in 150 mm thick layers	m ³	7.00		
	<p><u>C-Concrete work</u> Rate shall include for Grade of concrete used in the construction and the recommended mixes are follows Grade 25 recommended mix 1 :1.5 :3 Grade 20 recommended mix 1 :2 :4 Grade 15 recommended mix 1 :2.5 :5</p>				

Item	Descriptions	Unit	Qty	Rate	Amount.
	Grade 10 recommended mix 1 :3 :6 (a) Mixing ,hoisting, placing in position and packing around reinforcement (b) Vibrating , curing as directed (c) Making good after removal of formwork (d) All necessary props, joints, struts, etc. for formwork (e) Erecting, Striking off and cleaning of formwork (f) Cutting ,waste and rolling margin of steel reinforcement (g)Tying wire, steel chain ,spacer blocks etc. (h) All splicing laps etc. in reinforced steel other than designed laps (j) Finishing to slopes and falls and prepare surface ready for screed or paving where necessary (k) Cube compressive strength at 7 days shall not be less than 2/3 of the values specified at 28 days (i) Any other work which are not specified as the items in BOQ but indicated in the tender drawings				
5.0	50 mm thick lean (mass) concrete for beam foundation using Grade 10 (25mm aggr.) concrete mixing blinding layer with laying 500 gauge polythene.	m ²	14.00		
6.0	50 mm thick lean (mass) concrete for pavement area using Grade 10 (25mm aggr.) concrete mixing blinding layer with laying 500 gauge polythene.	m ²	32.00		
	<u>1:2:4 (20) mass concrete</u>				
7.0	3" thick Floor concrete with laying 500 gauge polythene.	m ³	2.25		
8.0	6" thick Floor concrete in Pavement area with laying 500 gauge polythene.	m ³	5.75		
	1:11/2:3 (20 mm) Reinforced cement concrete fill into form work and well packed around Reinforcement				
9.0	In Rectangle beam foundation	m ³	2.75		
10.0	In Column from floor level (DPC) to bottom of roof level	m ³	0.45		
11.0	Lintols, 100 mm wide x 150 mm high in Grade 20 (20mm) concrete, reinforced with 2no. 10mm tor steel bars and 6mm mild steel round bar stirrups at 150mm centers rate to include for formwork.	m	21.00		
	<u>Formwork</u> Rate shall include for				

Item	Descriptions	Unit	Qty	Rate	Amount.
	<p>(a) All temporary or permanent forms or moulds required for casting the concrete insitu and all the temporary construction regard for supports</p> <p>(b) Formwork shall be timber, steel or any other approved material</p> <p>(c) Formwork and centering shall be provide with adequate walling ,struts, braces ,ties and clamps so as to maintain the dimension line and level shown on the ,ties and clamps so as to maintain the dimension line and level shown on the drawing</p> <p>(d) During the entire operation of placing and compacting the concrete in to prevent any sagging exceeding 3 mm under the weight of wet concrete with any other supper imposed loads each day during construction</p> <p>(e) Any other work which are not specified as the items in BOQ but indicated in the tender drawings</p>				
12.0	for Rectangle beam foundation	m ²	24.75		
13.0	for Column from floor level (DPC) to bottom of roof level	m ²	8.75		
14.0	for pavement	m ²	8.25		
	<p><u>Reinforcement</u> Rate shall include for</p> <p>(a) Size of reinforcement rods describe in the drawing or elsewhere shall be the minimum size and any other tolerance shall be wholly above this sides. Hooks and laps have been measured in the quantity</p> <p>(b) All reinforcement are represented shall be free from Dirt, Oil , Paint or loose rust before fixing position and shall be brush with a stiff wire brush it so directed by the consultant</p> <p>(c) Re-bending of incorrectly bend bars shall not be attempted</p> <p>(d) Rate shall include for cutting , bending, fabricating, placing position holding and supporting including temporary fixing supports, hangers and binding wires</p> <p>(e) Any other work which are not specified as the items in BOQ but indicated in the tender drawings</p> <p>Cold worked high yield steel bar reinforcement shall conform to BS 4499 : 1998 grade fy = 460 N/ mm²</p> <p>Cold worked mild steel bar reinforcement shall conform to BS 4499 : 1998 grade fy = 250 N/ mm²</p>				

Item	Descriptions	Unit	Qty	Rate	Amount.
15.0	for Rectangle beam foundation	Kg	175.00		
16.0	In Column from floor level (DPC) to bottom of roof level	Kg	25.00		
17.0	Supplying and laying 150 mm x 150 mm BRC mesh for floor Concrete.	m ²	28.00		
18.0	Supplying and laying 150 mm x 150 mm BRC mesh for pavement area	m ²	29.00		
	<u>D-Block work</u>				
	Rate shall include for				
	(a) Plumbing angles				
	(b) Forming rebated reveals				
	(c) Square cutting and raking of joints for plastering				
19.0	100mm thick solid cement block masonry walls from finished floor level up to roof level	m ²	80.00		
	<u>E-Roof Works</u>				
	Rate shall include for				
	(a) Hoisting and placing roofing materials in position				
	(b) All Laps ,Straight cutting and waste				
	(c) Nails, Screws, Tapping Screws, Clips, Rivets, Straps ,Base plate, gusset plate				
	(d) Fixing nuts ,limpets etc.				
	(e) Planning sides of frame work to receive ceiling sheets/planks				
	(f) Planning timber planks if used				
	(g) framing /Drilling for holes, complete with all necessary nails, spikes, screws				
	(h) All timber members to be treated with approved wood preservatives				
	(I) All timber members to be swan ,plane and sand papering before erecting				
	(j) Preparing exposed surfaces and painting as specified or directed				
	(k) finished work must conform in all respect to the approved samples				
	(l) Any Guarantee for finished work				
	(m) Roof structure should match to existing building				
	(n) Any other work which are not specified as the items in BOQ but indicated in the tender drawings				

Item	Descriptions	Unit	Qty	Rate	Amount.
20.0	Roof work with color corrugated asbestos sheets on kempas or class i timber frame work, comprising of 150mm x 50 mm rigde plate, 75mm x 100mm wall plate, 50mm x 100mm rafters @ 30" C /C 50mm x 50mm battens @ 3' 0" C/C battens @ 33" C/C application of two coats of approved wood preservative paint in garrage roof. Rate shall include for Timber frame work, with necessary screws & hooks as directed	m ²	62.00		
21.0	Calicut pattern ridge tiles laid on 1:1:5 cement lime and sand mortar and joints pointed with matching colored cement on roof ridging	m	6.50		
22.0	Half round tile covering on both crest and valley of corrugated asbestos sheet roof	m ²	62.00		
23.0	Supply and fixing of 0.47 mm thk 470mm girth Hi-tensile (Grede-550) Zn/Al Colour Gutter with brackets end caps and necessary joinery accessories and fixing items	m	13.00		
24.0	Supply and fixing of 0.47 mm thk 250mm high Hi-tensile (Grede-550) Zn/AL Valance board, Color same as Gutters with brackets end caps and necessary joinery accessories and fixing items	m	14.00		
25.0	Supply and fixing of "0.47 mm" thk 250mm high Hi-tensile (Grede-550) Zn/AL barge board, Color same as Gutters with brackets end caps and necessary joinery accessories and fixing items	m	20.00		
26.0	Supply and fixing of 0.47 mm" thk Zn/AL Box type Hi- tensile (Grede-550) 100mmx100mm Down pipe two types for each side with brackets end caps and necessary joinery accessories and fixing items	m	16.00		
27.0	Flat ceiling consisting of 3.2 mm thick Non asbestos free cement board sheet 'V' grooved panels including 100 mm x 50 mm and 50 mm x 50 mm "Kempas (Red Balaw) " or class 1 approved timber frame , applying wood preservative to timber frame and one coat of primer and three coats of Emulsion paint to ceiling sheets	m ²	26.00		

Item	Descriptions	Unit	Qty	Rate	Amount.
28.0	<p>Sloping ceiling consisting of 3.2 mm thick Non asbestos free cement board sheet 'V' grooved panels including 100 mm x 50 mm and 50 mm x 50 mm , "Kempas (Red Balaw) " or class 1 approved timber frame, ceiling boards fixed on to existing frame work , applying wood preservative to timber frame and one coat of primer and three coats of Emulsion paint to ceiling sheets</p> <p><u>F-Doors and Windows</u> Rate shall include for</p> <p>(a) All labour in framing together all work in accordance with the best practices, complete with all necessary nails ,spikes ,screws etc.</p> <p>(b) All Timber sizes indicated in the descriptions shall be finished sizes after planning</p> <p>(c) All timber used shall be specified the best quality ,well seasoned swan square and free from saps ,cracks etc.</p> <p>(d) All timber shall be well treated with a two coats of approved colour less preservative before fixing</p> <p>(e) All timber shall be clean sand papered to a smooth finish ready to receive paint</p> <p>(f) Hoisting and fixing in position</p> <p>(g) Drilling and making good</p> <p>(h) Nails, Screws ,Glue,Plugs,Rawl plugs ,Brass screws,etc</p> <p>(i) Priming backs before fixing</p> <p>(k) Any other work which are not specified as the items in BOQ but indicated in the tender drawings</p> <p>Aluminum Extrusions</p> <p>(1) Aluminum Alloy should be conforming to Part 01 to 04 of BS EN 485 or BS EN 515:1993 or Parts 01 to 04 BS EN 573 or Parts 1,2,7 and 8 of BS EN 754 or Parts of BS EN 755 or Parts 1 and 2 of BS EN 12020,</p> <p>(2) Alloy Physical properties have tensile strength of 150MPa and Minimum Elongation 7%</p> <p>coating) grater than 15 micron natural Aluminum color, Anodizing should be conforming to BS 1615 (1987) or BS 3987 (1991, 1999) or ADM 10944 June 2001.</p> <p>Alternative specifications may be considered upon submission of the necessary details.</p>	m ²	28.00		

Item	Descriptions	Unit	Qty	Rate	Amount.
29.0	Supply and fixing Swing Door type D1 comprising Aluminum Door with slashes unit as per conceptual drawing ,Frame and Door sash should be fabricated by approved quality Anodization grater than 15 micron natural Aluminum color Aluminum Extrusions, , Glazing 6 mm thk approved clear glass to top part of Aluminum slashes and Bottom part covered 6 mm thk approved Aluminum - Plastic Composite Panels, Fixtures approved quality, gasket, silicone sealer, Hand sets ,Push plate including ,Security lock, Hinges and all other necessary accessories Door Size 610mm x 1830mm (Pls submit shop drawing for approvals)	m ²	1.30		
30.0	Supply and fixing Swing Door type D2 comprising Aluminum Door with slashes unit as per conceptual drawing ,Frame and Door sash should be fabricated by approved quality Anodization grater than 15 micron natural Aluminum color Aluminum Extrusions , Both Top part and Bottom part of Aluminum slashes covered 6 mm thk approved Aluminum - Plastic Composite Panels, Fixtures approved quality, gasket, silicone sealer, Hand sets ,Push plate including ,Security lock, Hinges and all other necessary accessories. Door opening size 610mm x 1830mm (Pls submit shop drawing for approvals)	m ²	1.30		
31.0	Supply and fixing Swing Door type D3 comprising Aluminum Door with slashes unit as per conceptual drawing ,Frame and Door sash should be fabricated by approved quality Anodization grater than 15 micron natural Aluminum color Aluminum Extrusions, , Glazing 6 mm thk approved clear glass to top part of Aluminum slashes and Bottom part covered 6 mm thk approved Aluminum - Plastic Composite Panels, Fixtures approved quality, gasket, silicone sealer, Hand sets ,Push plate including ,Security lock, Hinges and all other necessary accessories. Door opening size 900mm x 1860mm (Pls submit shop drawing for approvals)	m ²	3.00		
32.0	Supply and fix Heavy duty hydraulic Door closures to Aluminum doors, Adjustable Hold /open position , make, Yale or equivalent	Nos	2.00		

Item	Descriptions	Unit	Qty	Rate	Amount.
33.0	<p>Supply and fixing Shop front partition with Aluminum frame with glazed panel as per conceptual drawing ,Frame should be fabricated by approved quality Anodization grater than 15 micron natural Aluminum color Aluminum Extrusions , Glazing 6 mm thk approved clear glass to glazed panel Fixtures approved quality, gasket silicone sealer ,and all other necessary accessories Shop front partition should covered between top of parapet wall , top of Door type D3 & Eave ceiling level (Pls submit shop drawing for approvals)</p> <p>Grill Works and Gates Flat Irons and Round Mild Steel Rods</p> <p>(1) The Flat Iron shall be rolled from good quality Mild steel conforming to SLS 949 Part 5 : 1992. Alternative specifications may be considered upon submission of the submission of the necessary details.</p> <p>(2) The Round Steel Rod shall be rolled from good quality Mild steel conforming to SLS 949 Part 1 : 1992& SLS 26 : 1993. Alternative specifications may be considered upon submission of the submission of the necessary details.</p> <p>Steel Tubes</p> <p>(1) The steel tube shall be rolled from good quality carbon steel conforming to IS : 1161 (1979) Alternative specifications may be considered upon submission of the submission of the necessary details.</p> <p>(2) The steel tube shall be coated by Hot Dip Galvanized Coating conforming to ISO/CEN 1461 (1999) or AS/NZS 4680 (1999) Alternative specifications may be considered upon submission of the necessary details.</p> <p>Cladding Sheets</p> <p>(1) The Alu - Zinc Cladding sheets shall be rolled from good quality G 550 (Yield Strength 550 Mpa), conforming to ISO 9364 , JIS G3321 or ASTM A - 792 G 550 Alternative specifications may be considered upon submission of the necessary details.</p>	m ²	2.40		

Item	Descriptions	Unit	Qty	Rate	Amount.
	<p>(2) Zinc Aluminum Coating Designation shall be conforming to AZ - 150 and apply the Regular modified painting on both side (Painting thickness Top -25 microns , Bottom 5 ~ 7 microns epoxy primer service coat)</p> <p>(3) Surface paint reflection shall be Matt finish</p> <p>(4) The Alu - Zinc Sheets metal thickness shall be allowed 0.4 mm to 0.42 mm , Sheet width 914 mm to 1219 mm , Effective width 760 mm to 950 mm</p> <p>Galvanized Coating</p> <p>(1) Grill's and Gates's Hot Dipped Galvanized Coating should be conforming to ISO/CEN 1461 (1999) or AS/NZS 4680 (1999) Alternative specifications may be considered upon submission of the necessary details.</p>				
34.0	<p>Frame of grill panel P1 should be fabricated by Mild steel flat 25 mm x 6 mm , Rectangular Grill Mesh size 200 mm x 75 mm should be fabricated by Dia. 10 mm, Round Mild steel rods for Longitudinal wires, and Dia. 6 mm ,Round Mild steel rods for Cross wires as per conceptual drawing. After all fabrication Frame with Grill panel should coated by Hot Dip Galvanized. Top of the Frame with Grill panel should be fixed to Heavy duty GI pipe 40 mm (Outer dia 48.8 mm ,Inner dia 44.8 mm Thickness 4.0 mm) in between center wall and front column. Size 1472mm x 3096mm (Pls submit shop drawing for approvals)</p>	m ²	15.00		
35.0	<p>Frame of grille panel P2 should be fabricated by Mild steel flat 25 mm x 6 mm , Rectangular Grille Mesh size 200 mm x 75 mm should be fabricated by Dia. 10 mm, Round Mild steel rods for Longitudinal wires, and Dia. 6 mm ,Round Mild steel rods for Cross wires as per conceptual drawing. After all fabrication Frame with Grille panel should coated by Hot Dip Galvanized. Top of the Frame with Grill panel should be fixed to Heavy duty GI pipe 40 mm (Outer dia 48.8 mm ,Inner dia 44.8 mm Thickness 4.0 mm) in between Gate column and front column. Size 1347mm x 1244mm (Pls submit shop drawing for approvals)</p>	m ²	3.50		

Item	Descriptions	Unit	Qty	Rate	Amount.
36.0	<p>Supply and fixing Swing Grill Gate type G1 comprising GI frame with slashes unit as per conceptual drawing, Gate Frame should be fabricated by Heavy duty GI pipe 40 mm work should be fabricated by Heavy duty GI pipe 25 mm (Outer dia 34.2 mm ,Inner (Outer dia 48.8 mm ,Inner dia 44.8 Thickness 4.0 mm) and slash frame dia 30.2 Thickness 4.0 mm). Top part of sash covered Rectangular Grille Mesh size 200 mm x 75 mm (It should be fabricated by Dia. 10 mm, Round Mild steel rods for Longitudinal wires, and Dia. 6 mm ,Round Mild steel rods for Cross wires)and After all fabrication of Grill Gate should coated by Hot Dip Galvanized. 0.45mm Thick, Coating designation AZ 150 , Pre Painted Alu - Zinc coated Roll Formed cladding sheet should be fixed to bottom part of Sash. With includes Security lock,Hinges and all other necessary accessories Grill Gate Size 610mm x 2110mm (Pls submit shop drawing for approvals)</p>	m ²	2.75		
37.0	<p>Supply and fixing Swing Grill Gate type G2 comprising GI frame with slashes unit as per conceptual drawing, Gate Frame should be fabricated by Heavy duty GI pipe 40 mm (Outer dia 48.8 mm ,Inner dia 44.8 Thickness 4.0 mm) and slash frame work should be fabricated by Heavy duty GI pipe 25 mm (Outer dia 34.2 mm ,Inner dia 30.2 Thickness 4.0 mm). Top part of sash covered Rectangular Grille Mesh size 200 mm x 75 mm (It should be fabricated by Dia. 10 mm, Round Mild steel rods for Longitudinal wires, and Dia. 6 mm ,Round Mild steel rods for Cross wires) and After all fabrication of Grill Gate should coated by Hot Dip Galvanized. 0.45mm Thick, Coating designation AZ 150 , Pre Painted Alum - Zinc coated Roll Formed cladding sheet should be fixed to bottom part of Sash. With includes Security lock, Hinges and all other necessary accessories Grill Gate Size 890mm x 1726mm (Pls submit shop drawing for approvals)</p>	m ²	1.75		

Item	Descriptions	Unit	Qty	Rate	Amount.
38.0	Supply and fixing Sliding Door type SD comprising GI sliding 'U' channel with slashes unit as per conceptual drawing ,Door slider should be fabricated by Heavy duty GI 'U' channel 25 mm x 10 mm x 25 mm thk 6 mm and slash should be fabricated by Heavy duty GI sheet thk 6mm. To use the Two nos of steel pulley dia 75 mm with ball baring Sliding Door. After all fabrication of Sliding Door with sliders and other accessories, steel wire dia 5 mm and handle to operate the should coated by Hot Dip Galvanized. Sliding Door Size 610 mm x 610 mm (Pls submit shop drawing for approvals)	m ²	0.85		
39.0	Supply and fixing of hot dip galvanized grill work G3 made by 50 mm x 50 mm Gi mesh welded gauge 10 , fixed to "L" angle (25 mm x 25 mm x 6 mm) for both sides of the building as indicated in the drawing <u>G-Plumbing</u> Rate shall include for (a) Complying with the relevant Sri Lankan or British Standard and with the regulations of the local authorities and other controlling bodies (b) Fittings are measured separately only for 110 mm diameter pipes. The rates for all other sizes shall include cost of fittings and specials (c) cutting and waste of pipe etc. and jointing pipes (d) Solder, rivets, screws, nails, clips, brackets, running sockets, straps etc. (e) Connecting pipes to sanitary fixtures and appliances (f) Laying ,chasing burying and fixing pipes and fittings making good all worked disturbed (g) All laps, straight cutting and waste (h) Chipping concrete/masonry work where necessary (i) Testing installation as required, the method of testing required shall be stated (j) Applying two coats of gloss paint to all expose faces of pipe works (k) supporting sides of drain pipe trenches with earth work supports, back filling, disposal of surplus spoil and all jointing and other incidental materials (l) Giving notices, obtaining permits ,paying fees etc. (m) Submitting charts /lists indicating the country of origin and performance of all equipment offered and providing two (2) copies of 'As-built' drawings on completion of the site works (n) Any other work which are not specified as the items in BOQ but indicated in the tender drawings	m ²	6.00		

Item	Descriptions	Unit	Qty	Rate	Amount.
	<u>Water supply system</u>				
	Type 1000 up pipe with all necessary specials laid in internal water distribution system buried in brick wall fill inside toilet where necessary.	Note			
40.0	25mm dia pipe T1000	m	10.00		
41.0	20mm dia pipe T1000	m	10.00		
	Supply and fixing of approved quality PVC stop valves including all necessary fixtures.				
42.0	25mm dia. Stop valve	Nr	1.00		
43.0	20mm die stop valve	Nr	1.00		
	<u>Drainage & waste water disposal</u>				
	(a) Laying of pipes to falls.	Note			
	(b) Excavation, backfilling, disposal of surplus soil.				
	(c) All pipe specials such as bends, junctions, elbows, tees etc.				
	(d) Connections to sides of manholes etc.				
	(e) Providing sleeves etc., where pipes pass through wall, foundations etc.				
	(f) Giving notices, obtaining permits, paying fees, fixing, testing and commissioning etc.				
43.0	40mm dia T600 waste pipes	m	6.00		
44.0	63mm dia up T600 waste pipes including bends, tees and socketed joints.	m	6.00		
45.0	110 dia, UPVC T600 pipes from toilet to manhole, manhole to manhole and manhole to septic tank with necessary fittings as shown in the drawings.	m	15.00		
46.0	Construction manhole 450mmx450 mm internally with invert depth not exceeding 450 mm including excavation. Built in 112.5 mm thick brick work in cement sand 1:5 and cement rendering 12mm thick to internal surfaces, RCC covers with 02 Nrs mild steel lifting hooks, inlet and outlet connections all complete to approval.	Nrs	1.00		

Item	Descriptions	Unit	Qty	Rate	Amount.
47.0	Construction of manhole 300mmx300mm internally with invert depth not exceeding 375 mm including excavation. Built in 112.5 mm thick brick work in cement sand 1:5 and cement rendering 12mm thick to internal surfaces, RCC covers, inlet and outlet connections all complete to approval.	Nr	1.00		
48.0	Tap , garden plastic 20 mm water tec or equivalent with fixing fixtures	Nos	2.0		
49.0	Supply and Fixing RCC 3'-0"dia 8'-0" long Septic tank and 3'-0"dia 3'-0" height Sockage pit with necessary accsseries and fixing fixes. Rate shall include Excavation, Back filling, Connecting with Pipe and laying metal around the sockage pit as directed.	Nos	1.0		
	<u>H-Wall Finishes</u> Rate shall include for (a) Thickness of plasterwork, bedding ,hacking etc. given in the description of items are the optimum thickness required (b) finished work must conform in all respect to the approved samples (c) temporary rules, screeds, ground etc. (d) Raking out joints of brickwork and backing concrete surfaces for forming key (e) Joints between different surfaces and between new and old plastering (f) Forming arises and stopping against Joinery work, metal work etc. (g) All making good around pipes, sanitary fittings and fixtures (h) straight cutting and raking cutting holes notching and other sundries (i) Internal and External angles (k) Any other work which are not specified as the items in BOQ but indicated in the tender drawings				
50.0	20 mm thick 1:3 cement and sand plinth plaster finish smooth with neat cement floating	m ²	8.00		
51.0	20mm thick cement sand 1:5 plaster finished semi rough with wooden float on block walls and concrete surfaces flush with walls on external surface of walls & columns finished semi rough.	m ²	65.00		

Item	Descriptions	Unit	Qty	Rate	Amount.
52.0	20mm thick cement sand 1:5 plaster finished smooth with skim coat or equivalent on block walls and concrete surfaces flush with walls on internal surface of walls & columns finished smooth.	m ²	72.00		
53.0	Plastering external reveals 0mm - 100mm wide finished smooth.	m	36.00		
54.0	Plastering internal reveals 0mm - 100mm wide finished smooth.	m	90.00		
	<u>I-Floor finishes</u>				
	Rate shall include for				
	(a) Thickness of rendering bedding etc. given in the description of items are the optimum thickness required				
	(b) finished work must confirm in all respect to the approved samples				
	(c) Preparing surfaces of concrete / brick to receive rendering etc.				
	(d) Joints between different surfaces				
	(e) Finishing to slopes and across falls				
	(f) All making good around pipes ,sanitary fittings and other fixtures				
	(g) Straight cutting and waste of tiles and other types of floor finishes				
	(h) Protecting finished surfaces				
	(i) For temporary rules ,screeds, grounds etc.				
	(j) All normal cutting arises, rounded edges, bedding and pointing				
	(k) Any other work which are not specified as the items in BOQ but indicated in the tender drawings				
55.0	20mm to cement rendering in 1:3 cement sand motar on floor finished smooth with cement grout including 100 mm high skirting, pavement area and Half round cement rendered drain, width 110 mm depth 125 mm.	m ²	24.00		
56.0	20mm to cement rendering 1:3 cement sand motar on walls 900mm high finished smooth with cement grout	m ²	14.00		
57.0	20mm to cement rendering in 1:3 cement sand motar on pavement finished smooth with cement grout including 100 mm high skirting, Half round cement rendered drain ,width 110 mm depth 125 mm.	m	29.00		
58.0	To install the Stainless Steel weir gates ,Thickness 6 mm, width 125 and height 150 mm to control and retain the water flow and water level in the drain	Nos	2.00		

Item	Descriptions	Unit	Qty	Rate	Amount.
	<p><u>J-Painting</u> (a) All paint materials shall be best quality and shall be prepared products of manufacturer's by the Engineer in writing (b) All surfaces to be painted shall be prepared as specified and prepared surfaces shall be approved by the Engineer before painting (c) Unevenness and filling in plastered surfaces shall be filled with approved type of Joint Compound or equivalent to " Total Coat " and allowed to set and sand papered to give a smooth and even surface. (d) Only alkali resistant emulsion paint shall be used on plastered surface</p> <p>Rate shall include for (a) Preparation of surfaces ,cleaning down (b) Smoothing ,Knotting, stopping etc. (c) Protecting floors, and fittings etc. (d) Removing and replacing doors furniture and cleaning upon (e) Providing samples and specification of all paints to be used in the works (f) Providing painting to an approved colour scheme and design (g) Any other work which are not specified as the items in BOQ but indicated in the tender drawings</p>				
59.0	Prepare and apply two coat of approved type of Joint Compound or equivalent to " Total Coat " by square trowel and three coat of specified Emulsion paint on plastered surfaces, On block walls and attached concrete surfaces	72.00	m ²		
60.0	Prepare and apply two coat of approved type of Acrylic Filler or equivalent to and three coat of specified Weather shield paint on plastered surfaces , On block walls and attached concrete surfaces	65.00	m ²		
	<p><u>K-Electrical installation.</u> Rate in Bill of Quantities shall include all necessary materials (Cables, conduits, PVC sunk box ,bulbs, switches etc.) and labour required to complete the electrical installation to good working order. Except where specifically stated, all coats associated with provision of all hols, opennings, chases, ducts and other builders work required for installation and make them good, shall be included in the rates.</p>	Note	Note		

Item	Descriptions	Unit	Qty	Rate	Amount.
61.0	<p>Where reference is made to certain manufactures products and items identified by registered trade marks has been done for the sole purpose of defining and establishing standards of quality and performance and not with the interntion of restricting the procurement of material or fitting to a particular manufacturer .However all equipment and material should meet the BS or an equivalent standard.</p>	Note			
	<p>Testing and commissioning of the electrical installation is to be carried out by the contractor and inspection report submitted according to the requirements of the power supply Authority.</p>	Note			
	<p>Electrical Items (MCB, RCCB etc.) should be of Wuropean/japanese origin or to the BS or equivalent and items without an accredited agent in Sri Lanka shall not be accepted. Guarantee cards (Fans etc.) should be provided from Accredited agent before installation.</p>	Note			
	<p>All the quantities given here are approximated values and Quantities may change with the actual installation at the site.</p>	Note			
	<p>All types of fittings, materials, painting and finishes shall be approved by the Engineer prior to installation.</p>	Note			
	<p>Consumer Units Supply and installation of following surace/flush mounted type consumer unit with polycarbonate enclosure.</p>				
	<p>CU</p>	Nr			
	<p>Enclosure</p>		1.00		
	<p>01.No.of 32A 2-pole 10kA MCB 01 No .of 40A 2-pole RCCB,with 30mA sensitivity 01 No.of 6A 1-pole MCB, with 6kA breaing capacity 01 No.of 16A 1-pole MCB, with 6kA breaing capacity 01 Set of 40A Cu Comb Bus Bars for L & N Earth bar All internal connections</p>				
	<p>Equipment to be to the BS and European/Japanese make</p>				
<p>All materials, equipment's, wiring and workmanship shall confirm to local authority requirements, B.S Standards, latest I.E.E regulations (17th edition).</p>	Note				
<p>Contractor shall obtain sample approvals for all the items used in electrical Installation before commencing Installation.</p>	Note				
<p>Contractor shall propose shop drawings/conduit layouts drawings and shall obtain approval from Consultant Engineer before commencing installation</p>	Note				

Item	Descriptions	Unit	Qty	Rate	Amount.
	<p>Rates in Bill of Quantities shall include all necessary materials Cables, conduits, PVC sunk box, bulbs, switches etc.) and labour required to complete the electrical installation to good working order.</p> <p>Except where specifically stated, all costs associated with provision of all holes, openings, chases, ducts and other builders' work required for installation and make them good, shall be included in the rates.</p> <p>Where reference is made to certain manufactures' products and items identified by registered trade marks, this has been done for the sole purpose of defining and establishing standards of quality and performance and not with the intention of restricting the procurement of material or fitting to a particular manufacturer.</p> <p>Electrical Items (MCB,MCCB,RCCB etc.) without and accredited agent in Sri Lanka shall not be accepted and guarantee cards (Fans etc.) should be provided from Accredited agent when necessary.</p> <p>All the main feeder cables quoted below shall be on measure and pay basis</p> <p>Inspection & testing</p> <p>Testing and commissioning of the electrical installation is to be carried out by the contractor and inspection report to be submitted according to the requirements of the power supply authority. Cost of such testing and reports to be included in the rates. As built electrical drawing to be submitted.</p>	<p>Note</p> <p>Note</p> <p>Note</p> <p>Note</p> <p>Note</p> <p>Note</p>			
62.0	<p>Testing of the complete electrical Installation and issuing a certificate by a chartered Electrical Engineer, registered with Ceylon Electricity Board.</p>	Item	1.00		
63.0	<p>As built drawings, Testing and Commissioning providing operation and maintenance manual.</p>	Item	1.00		
	<p>Power receiving from CEB</p> <p>Electrical Contractor shall coordinate with all relevant parties in obtaining power supply connection from CEB</p>	Note			
	<p>The Contractor shall provide necessary support to CEB</p> <p>Personal and employer in obtaining CEB power supply. Feeder cable</p>	Note			
	<p>Rates shall be included for all necessary cable accessories such as cable ties, Cable Lugs, Glands, identification tags, warning tiles and accessories All horizontal and vertical Cable trays should be adequately sized to provide 40% spare space.</p>	Note			

Item	Descriptions	Unit	Qty	Rate	Amount.
	Point wiring to be carried out with 2 x 1 mm² Cu/PVC/PVC +2.5 mm² Cu/PVC earth cable terminated in a 3 terminal ceiling rose and sunk switch, wired in concealed conduit in wall and above ceiling to be supplied and installed to working order as directed.				
64.0	Lamp point wiring	Nr	10.00		
65.0	Ceiling fan point wiring complete with hook and sunk	Nrs	2.00		
	Wiring to be carried out with 2 x 2.5 mm² PVC/PVC/Cu + 2.5mm² PVC/Cu earth cable wired in concealed conduit in wall and above ceiling to be supplied and installed to working order.	Note			
66.0	13 AMP Switch Socket outlet.	Nrs	4.00		
	<u>Light fittings</u>				
	Each fitting shall include bulbs, internal wiring, hanging and fixing material and be complete without any additional item/material being required to make it	Note			
67.0	Supply and installation of Pendent down light c/w 18W energy efficient CFL to consultant approval (Orange or equ).	Nrs	10.00		
68.0	Supply and installation of 1400mm, sweep ceiling fan with regulator to consultant approval.	Nrs	2.00		
	<u>Switch socket outlet.</u>				
	Switch socket outlet 13 AMP to be supplied and installed complete with screws etc. to working order (Excluding wiring conduits)	Note			
69.0	13 AMP Switch Socket outlet. (Orange or equ).	Nrs	4.00		
Grand Total (Rs.)					

**CONSTRUCTION OF PROPOSED ADDITIONAL DOG KENNEL'S NEAR THE EXISTING
KENNELS - PARLIAMENT OF SRI LANKA, SRI JAYEWARDENEPURA KOTTE**

Bill No. 01

Preliminaries Rs.

Bill No. 02

Construction 2 Cannel Cage Rs.

Sub Total 1 Rs.

Deduction Provisional Sum **Rs. 200,000.00**

Sub Total 11 Rs.

Discounts Offered Rs.

Sub Total 111 Rs.

Add Provisional Sum Rs. 200,000.00

Sub Total IV Rs.

Add 18% VAT Rs.

Grand Total Amount Rs.

Signature :

Name :

Designation :

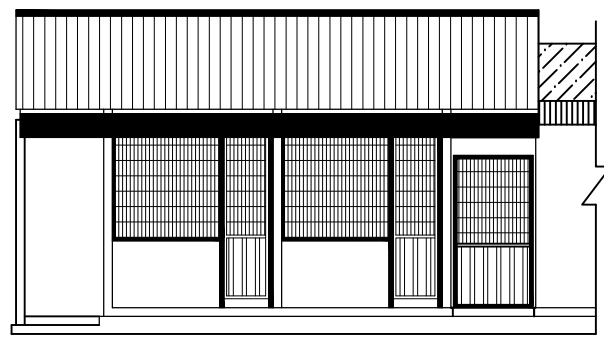
Address :

Stamp :

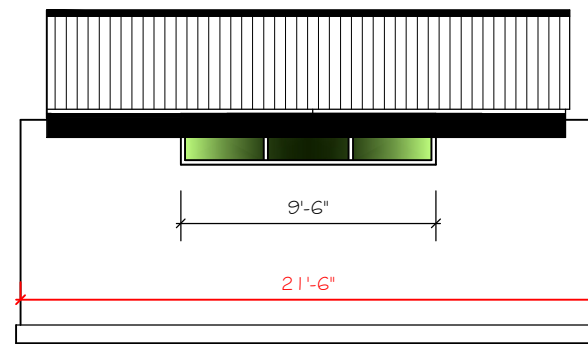
SECTION - 8

DRAWINGS

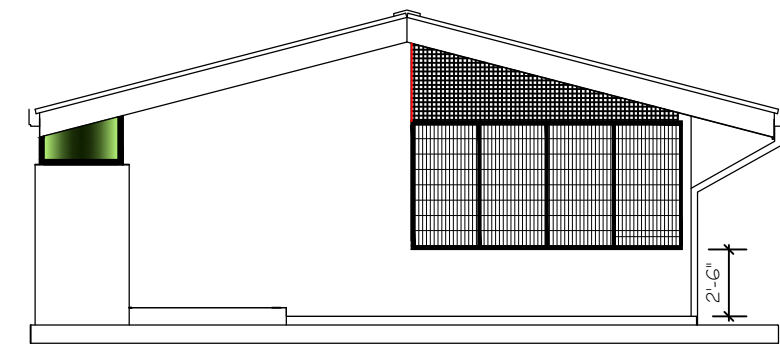
Please Refer Annexure I & II



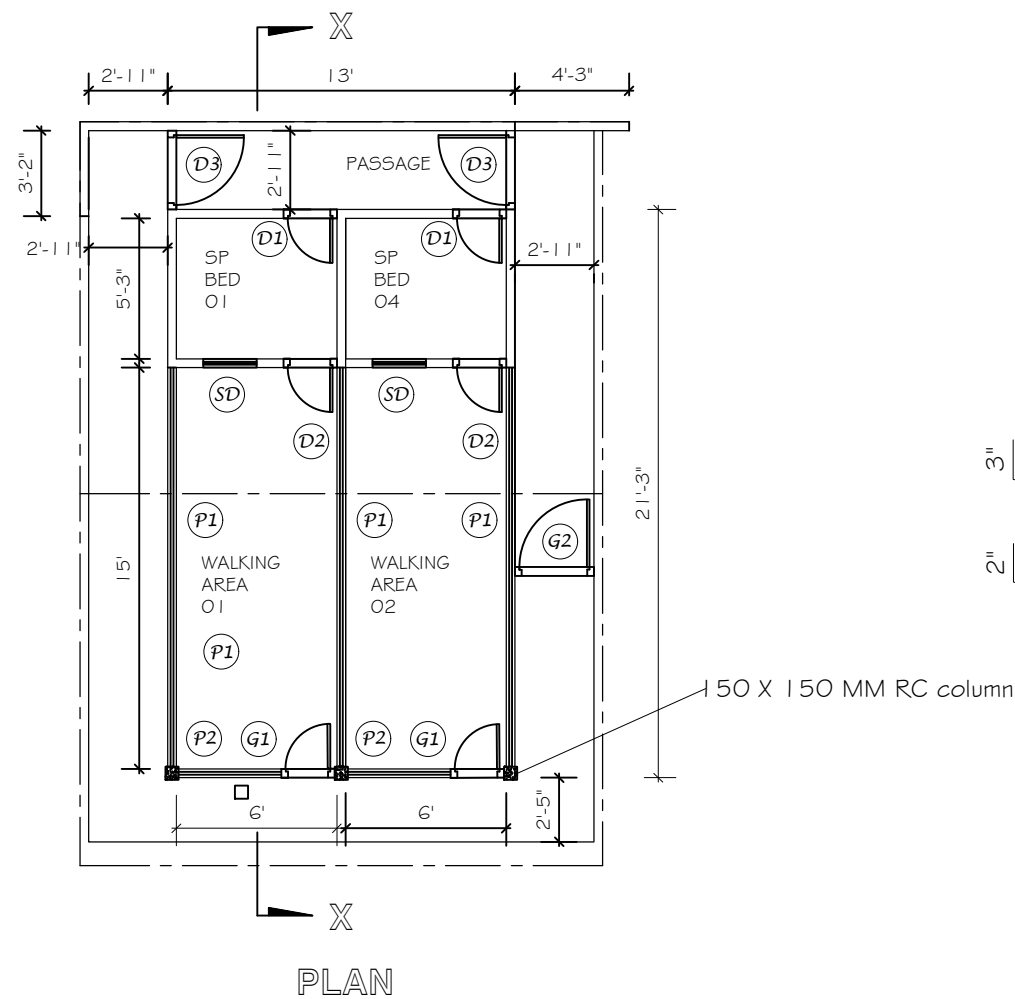
FRONT ELEVATION



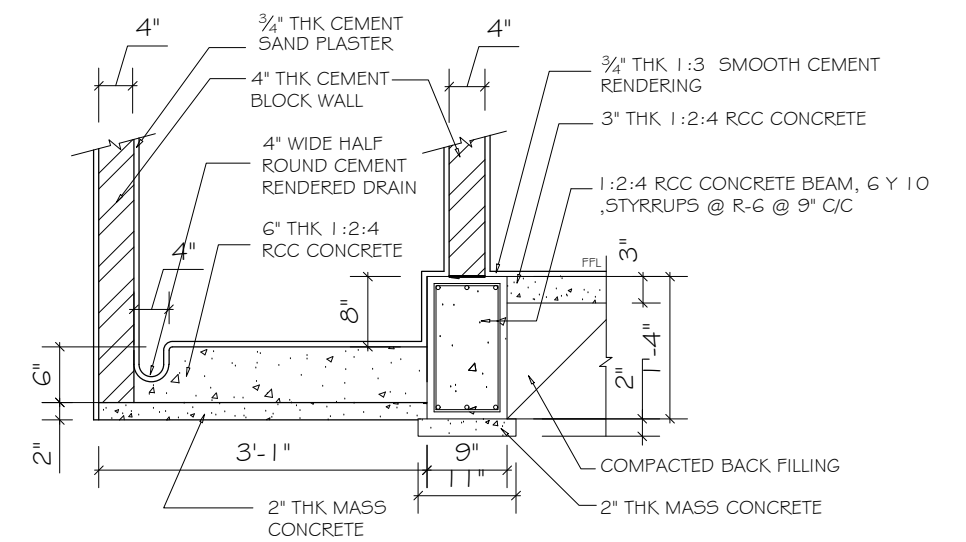
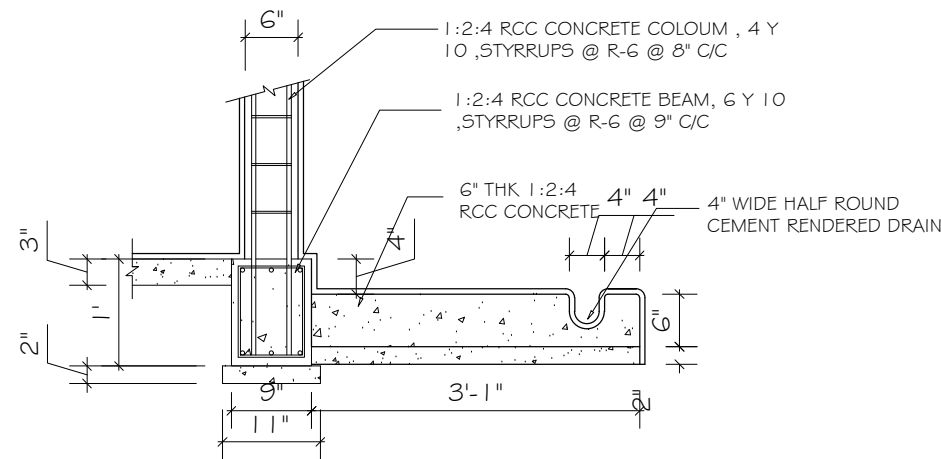
REAR ELEVATION



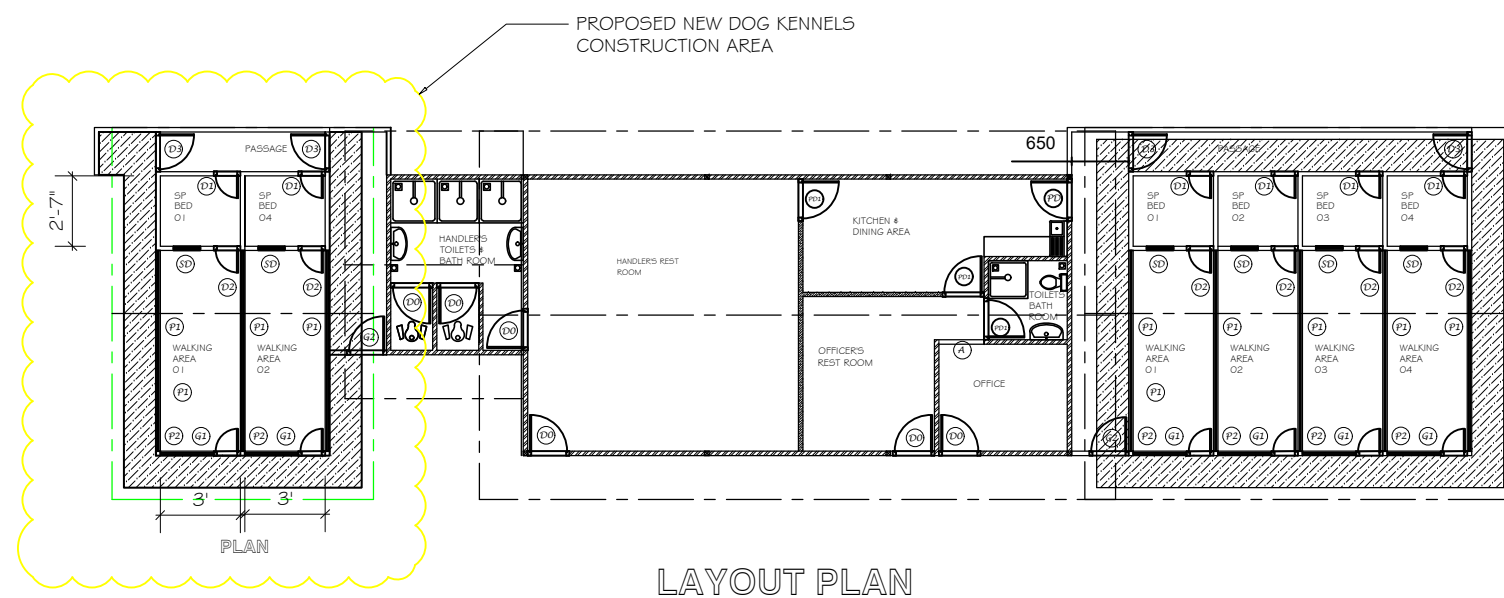
LEFT SIDE ELEVATION



PLAN



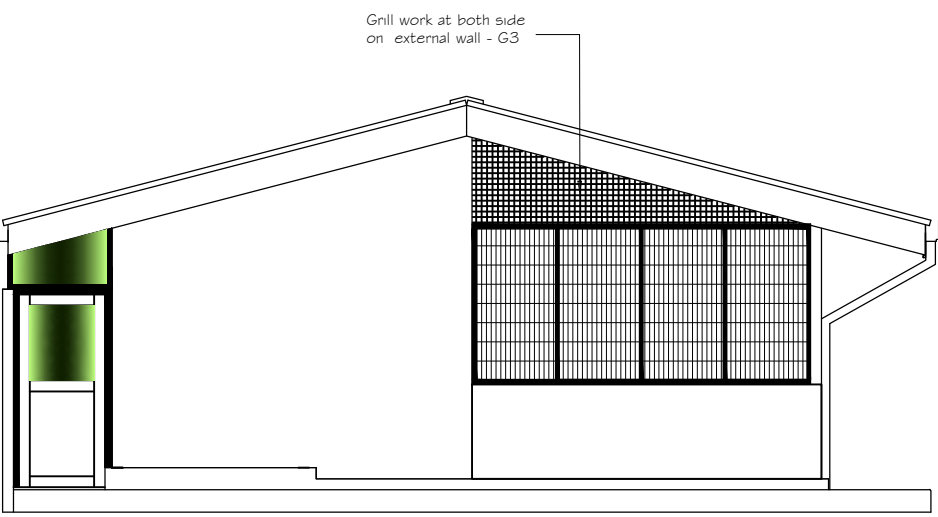
FOUNDATION DETAILS



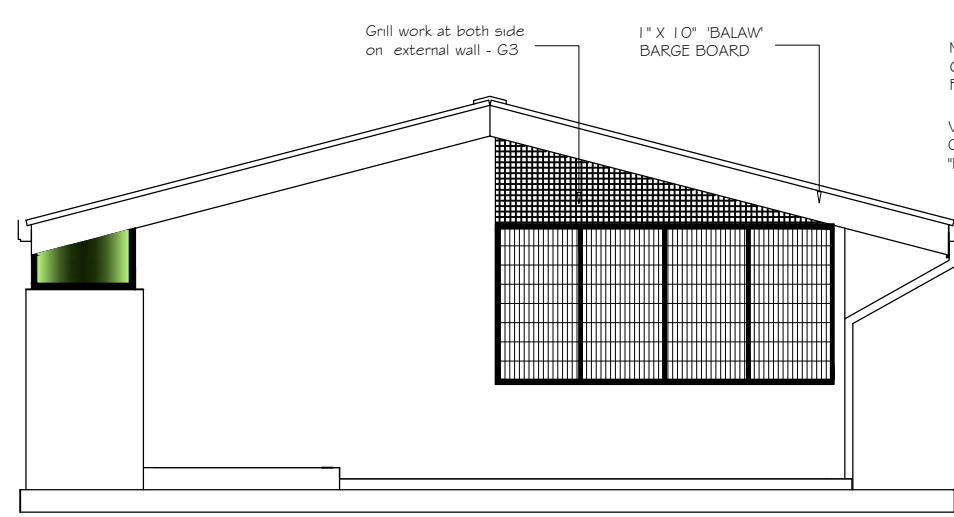
LAYOUT PLAN

Existing Wall
Proposed Wall

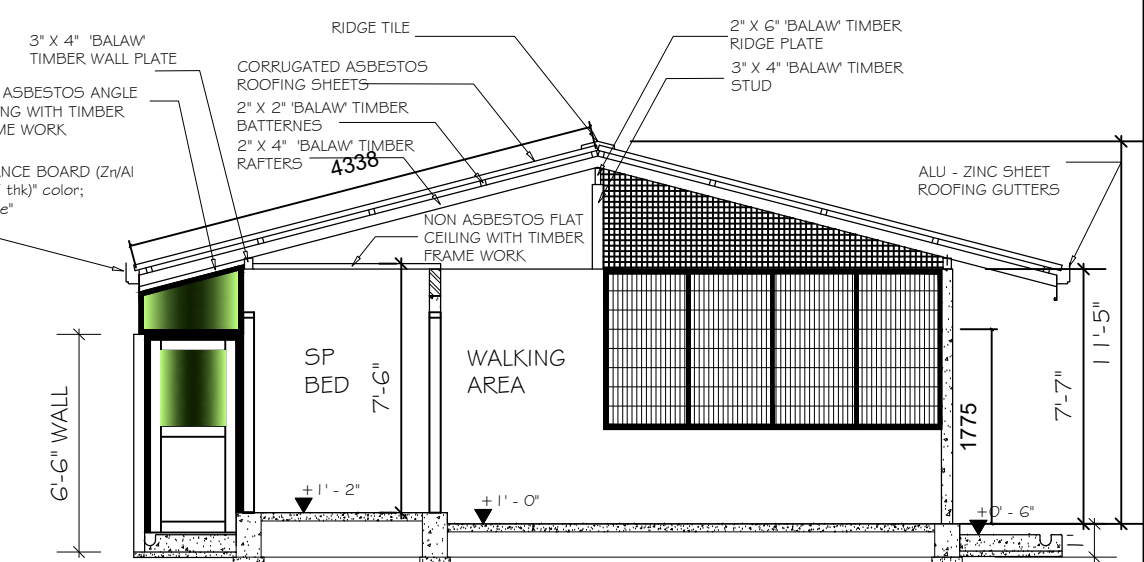
PARLIAMENT OF SRI LANKA	
POLICE KENNEL'S DIVISION	
Drawing	PROPOSED NEW DOG KENNELS
Dra No	PDKDP-04-2023
Scale	N.T.S
Date	19 SEP 2023
Drawn By	C. S. Balasuriya



SIDE ELEVATION- SECTIONAL

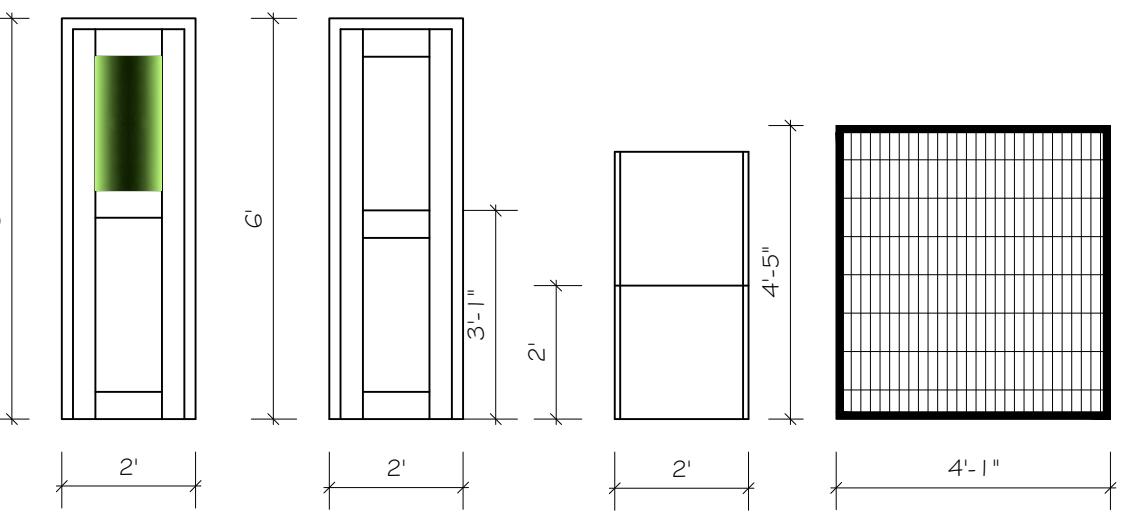


SIDE ELEVATION



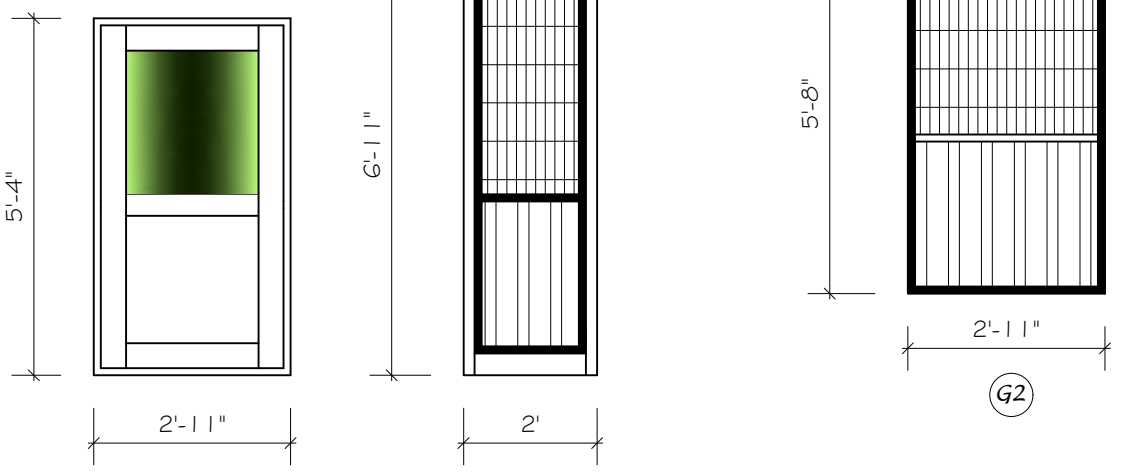
SECTIONAL ELEVATION X - X

CONCEPTUAL DRAWING FOR DOORS ,GRILLE PANELS & GATES



Note 01

Frame of grille panel should be fabricated by Mild steel flat 25 mm x 6 mm , Conforming to SLS 949 Part 5 : 1992
 Grill Mesh , Rectangular size 200 mm x 75 mm should be fabricated by Longitudinal wires, Mild steel round , Dia. 10 mm and Cross wires, Mild steel round , Dia. 6 mm, Conforming to SLS 949 Part 1 : 1992# SLS 26 : 1993
 After all fabrication Grill panel should coated by Hot Dip Galvanized Coating conforming to ISO/CEN 1461 (1999) or AS/NZS 4680 (1999)

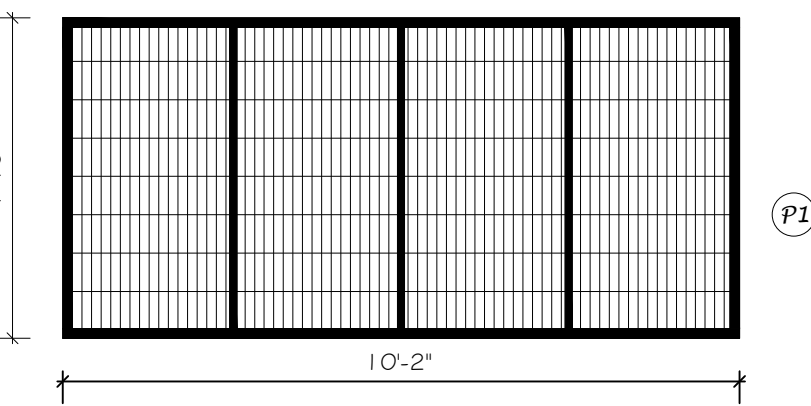


Note 02

Frame of Gate should be fabricated by Heavy duty GI pipe 32 mm (Outer dia 42.5 mm ,Inner dia 41.9 mm Thickness 2.6 mm) .The steel tube shall be rolled from good quality carbon steel conforming to IS : 1239 (Part -1) (1990) ,
 The Grill Mesh should be fixed to the top part of the Grill Mesh , Rectangular mesh size 200 mm x 75 mm should be fabricated by Longitudinal wires, Mild steel round , Dia. 10 mm and Cross wires, Mild steel round , Dia. 6 mm, Conforming to SLS 949 Part 1 : 1992# SLS 26 : 1993.

0.45mm Thick, Coating designation AZ 150 , Pre Painted Alu - Zinc coated Roll Formed cladding sheet should be fixed to bottom part of Gate.

After all fabrication Gate should coated by Hot Dip Galvanized Coating conforming to ISO/CEN 1461 (1999) or AS/NZS 4680 (1999)



PLS SUBMIT SHOP DRAWINGS FOR APPROVALS

PARLIAMENT OF SRI LANKA	
POLICE KENNEL'S DIVISION	
Drawing	PROPOSED NEW DOG KENNELS
Dra No	PKDP-05-2023
Scale	N.T.S
Date	19 SEP 2023
Drawn By	C. S. Balasuriya

SECTION - 9

BID SECURITY

Notes

The bidders are advised to use the information printed in blue in this volume as a check list when submitting the bid. However, it is the responsibility of the bidders to comply with all the requirements given in the bidding document. Failure to non compliance with any of them may be a reason for rejection of the Bid.

Notes

- *Bidders shall submit the complete Form of Bid Security/ Bid Securing Declaration as appropriate in compliance with the requirements of the bidding documents.*
- *Bidders should not complete the Form of Agreement at the time of preparation of bids.*
- *The successful bidder will be required to sign the Form of Agreement, after the award of contract.*
- *Any corrections or modifications to the accepted bid resulting from arithmetic corrections, acceptable deviations, or quantity variations in accordance with the requirements of the bidding documents should be incorporated into the Agreement.*
- *The Form of Performance Security, Form of Advance Payment Security and Form of Retention Money Guarantee should not be completed by the bidders at the time of submission of bids.*
- *The successful bidder will be required to provide these securities in compliance with the requirements herein or as acceptable to the Employer.*

FORM OF BID SECURITY

[this Guarantee form shall be filled in accordance with the instructions indicated in brackets]

----- *[insert issuing agency's name, and address of issuing branch or office]-*

Beneficiary: ----- *[insert (by PE) name and address of Employer]*

Date: ----- *[insert (by issuing agency) date]*

BID GUARANTEE No.: ----- *[insert (by issuing agency) number]* We have been informed that ----- *[insert (by issuing agency) name of the Bidder]* (hereinafter called "the Bidder") has submitted to you its bid dated ----- *[insert (by issuing agency) date]* (hereinafter called "the Bid") for the execution of *[insert name of Contract]* under Invitation for Bids No. ----- *[insert IFB number]* ("the IFB").

Furthermore, we understand that, according to your conditions, Bids must be supported by a Bid Guarantee.

At the request of the bidder, we ----- *[insert name of issuing agency]* hereby irrevocably undertake to pay you any sum or sums not exceeding in total an amount of ----- *[insert amount in figures]* ----- *[insert amount in words]* upon receipt by us of your first demand in writing accompanied by a written statement stating that the Bidder is in breach of its obligation(s) under the bid conditions, because the Bidder:

- (a) has withdrawn its Bid during the period of bid validity specified; or
- (b) does not accept the correction of errors in accordance with the Instructions to Bidders (hereinafter "the ITB") ; or
- (c) having been notified of the acceptance of its Bid by the Employer during the period of bid validity, (i) fails or refuses to execute the Contract Form, if required, or (ii) fails or refuses to furnish the Performance Security, in accordance with the ITB.

This Guarantee shall expire: (a) if the Bidder is the successful bidder, upon our receipt of copies of the Contract signed by the bidder and of the Performance Security issued to you by the bidder; or (b) if the bidder is not the successful bidder, upon the earlier of the successful bidder furnishing the performance security, otherwise it will remain in force up to ----- *(insert date)*

Consequently, any demand for payment under this Guarantee must be received by us at the office on or before that date.

[signature(s) of authorized representative(s)]

Check List for Bidders

Bidders are advised to fill the following table:

ITEM	ITB Clause	YES (tick)	REFERENCE
Form of Bid			
Address to the Employer ?	18		
Completed?	18		
Signed?	18		
Bid Security			
Address to the Employer ?	16		
Format as required	16		
Issuing Agency as specified?	16		
Amount as requested?	16		
Validity 28 days beyond the validity of Bid?	16		
Qualification Information	16		
All relevant information completed	4		
Signed?	4		
Addendum			
Content of the addendum (if any) taken in to account?	10		
BID package			
All the documents given in ITB Clause 12 enclosed in the original and copy?	12		
ITB Clause 19 followed before Sealing the Bid Package?	19		