



கார்ட்டு சா஁த லார்தால - 2012
லதரீலீ ச஁ரக்து டேயார்ததீன்துல
செயலாற்றுகை அறிக்கை 2012
வனசீவராசிகள் பாதுகாப்பு திணைக்களம்
Performance Report – 2012
Department of Wildlife Conservation



INTRODUCTION

Conservation of Sri Lanka's irreplaceable indigenous flora and fauna together with their natural habitats is a national priority. The Department of Wildlife Conservation (DWC) is the principle government institution responsible for the protection of wildlife resources of the country over its entire land and sea territories. DWC also bears the legal authority to establish and manage the network of Wildlife Protected Areas (WLPAs) of the country, which at present exceeds a total area of 8500 km²; 13% of Sri Lanka's land surface. Following table illustrates the categories and the quantities of wildlife protected areas that have been declared by Department of Wildlife Conservation. Annex 01 provides a comprehensive account on present wildlife protected area network.

Category of PA		Number of PAs Declared up to date
National Reserves	Strict Natural Reserve	03
	National Park	22
	Nature Reserve	05
	Jungle Corridors	01
Total		31
Sanctuaries		65
Grand Total		96

Apart from preserving the biological resources rich in diversity together with their natural habitats, the network of WLPAs protects almost all the large scale reservoirs of the country which provide water for agriculture and generation of hydro-power. Since 1950s, all the reservoirs in the Gal Oya Valley including SenanayakeSamudra, all Mahaweli reservoirs and those fed with Mahaweli water in the Central and North Central Provinces, all the reservoirs in the Southern Part of the country including Udawalawa, Mau Ara, Lunugamvehera and Veheragala are protected together with their catchment areas, within the network of WLPAs. Total number of reservoirs which provides water for agriculture and Hydro-power generation situated in the WLPAs exceeds 40.

Upper catchments of the major rivers of Sri Lanka, viz. Mahaweli, Kalu, Kelani and Walawe also fall within the Wildlife reserves such as Peak Wilderness Nature Reserve and Horton Plains National Park.

Having the tenure of Sri Lanka's most precious resource, natural ecosystems, DWC undertake the responsibility of professional management and conservation of those WLPAs making mission of DWC guided by its vision.

Vision: The conservation of wildlife heritage for present and future generations.

Mission: Working with others to ensure conservation of wildlife heritage through professional management.

As per the guidelines provided in the National Wildlife Policy of Sri Lanka, the management of the WLPAs which contributes immensely to the National Economy is done in line with the strategies, plans and programmes of national and international standards.

Current global vision of protected area management emphasizes science in decision making , efficient communication and management of complex data and information , long term management plans to guide and balance conservation and development efforts, provision of varied recreational and educational opportunities for visitors, and linking local communities through participation and benefit-sharing.

Currently the DWC is embarked on an effort to upgrade its operations in several fronts.

- To develop national strategic plans and programmes for conservation of wildlife resources, keeping in line with the appropriate national and international policies.
- To protect representative samples of all eco-systems, including sites of special scientific interest; expand and link protected areas wherever necessary to ensure the survival of viable populations of wildlife.
- To identify, classify and manage all protected areas, based on appropriate scientific research and regulations, and then monitor the status of each protected area.
- To prepare and implement recovery plans for endangered species.
- To facilitate eco-tourism in PAs, with due consideration to the conservation of the ecosystems concerned.
- To implement the Fauna and Flora Protection Ordinance and other regulations effectively, to minimize illegal exploitation of wildlife resources, within and outside WLPAs.
- To encourage scientific research relevant to the management of the wildlife resources in Sri Lanka.
- To strengthen the capabilities of the staff of the DWC through the provision of training, encouragement and motivation.
- To promote conservation through public education and awareness programmes.
- To encourage public participation in conservation activities and assist the communities living around PAs to improve their socio- economic conditions, in order to reduce their dependency on PA resources.

Department of Wildlife Conservation is operating under 08(eight) technical divisions at the Head Office level viz; Planning and Information Communication Technology, Natural Resources, Elephant Conservation, Visitor Services, Eco-tourism & Community Outreach, Research and Training, Protection & Law Enforcement and Wildlife Health. In addition Finance, Administration and Engineering Divisions, perform supporting duties of the technical divisions of

department. Details of the activities implemented by the divisions, aforementioned, are given in the Chapters 01 to 11.

At the beginning of year 2012 the action plan was implemented by 07 wildlife Regions viz; Central, Eastern, Mahaweli, North Western, Southern, Western and Yala-Bundala. With effect from 16th July, 2012 regional boundaries were realigned to result 11 wildlife Regions viz; Central, North Western, Southern, Western, Anuradhapura, Polonnaruwa, Uva, Ampara, Vavuniya, Trincomalee and Kilinochchi in view of strengthening DWC operations throughout the country. Under these regions wildlife protected areas are managed to achieve conservation goals and development targets. Annex 01 provides details of on the present setup of wildlife Regions.

National Wildlife Training & Research Centre at Giritale continued conducting regular training programmes to improve skills and knowledge and to mould the attitudes of wildlife officers in favour of professional management of country's wildlife resources.

In the year 2012 Rs. 1131.3 Million was received from Consolidated Fund for implementing the action plan of the year. In addition funds from Wildlife Preservation Fund, Kalu Ganga - Moragahakanda Agriculture Development Project and donations from individual donors and donor agencies were also disbursed for planned conservation activities.

Year end account show a healthy financial progress; 100 % of recurrent expenditure and 65% of capital expenditure (Annex 2)

Chapter 1

PLANNING & ICT DIVISION

1.1. Main Activities and Responsibilities

- Preparation of annual action plan for the DWC.
- Preparation of Project Proposal for special development and conservation activities.
- Monitoring the implementation progress of annual action plan.
- Preparation of progress reports monthly, quarterly and annually.
- Preparation of annual performance report.
- Updating and administration of DWC web site; www.dwc.gov.lk
- Monitoring, upgrading and maintenance of island wide radio communication system of the DWC.
- Monitoring, upgrading and maintenance of PABX.
- Administration, maintenance and development of Wide Area Network (WAN) of DWC.
- Automation of National Parks.
- Administration of GIS unit.

1.2 Performance 2012

Following major activities were carried out during the year 2012.

- **Preparation of Action Plan**

Work program including Action Plan of the department for the year 2013 was prepared and submitted to Ministry of Wildlife Resources Conservation.

- **Progress Reporting**

Monthly and quarterly progress reports on the progress of implementation of activities under capital budget including ‘Gajamithuro’, ‘Elephant Conservation Project’, ‘Establishment of Wild Elephant Conservation Parks in Lunugamwehera and Horowpothana’ and ‘DeyataKirula Development Programme’ was sent in time as per the schedule to Ministry of Agrarian Services and Wildlife. Occasional progress reports were submitted to various other institutions, according to the necessity and on request.

- **Preparation of the Performance Report**

Performance report for the year 2011 was compiled using data and information on the implementation of Action Plan activities and results of conservation operations of DWC.

- **Preparation of Special Project Proposals**

Project proposals on special conservation and development activities in protected areas prepared by Planning and ICT division were forwarded to the treasury and/or other funding agencies. Following special project proposals (Table 1.1) were qualified for funding and DWC is to receive funds for these proposals in 2013.

Table 1.1: Special Project Proposals Qualified for Funding

Name of the Proposal	Total Project Cost (Rs. Millions)	Funds to be Received in 2013 (Rs. Millions)	Funding Source
Construction of Electric Fences	100.00	100.00	Consolidated Fund
Establishment of Elephant Conservation Parks at Horowpothana and Lunugamvehera	835.00	100.00	Consolidated Fund
DeyataKirula National Development Programme	100.00	100.00	Consolidated Fund

- **Administration of DWC Wide Area Network (DWC WAN)**

Existing computer network was maintained and administered throughout the year by staff of planning division. These activities include repairing of computers and accessories, trouble shooting of the WAN, upgrading the computers with installing new hardware and software.

Establishment of automated ticketing system at Horton Plains and Wilpattu national parks were completed.

- **Administration of DWC Website: www.dwc.gov.lk**

Existing web site of DWC was continuously updated incorporating data and information with educational and research. The entire process was performed by the staff of planning division.

- **Radio Communication Network**

Necessary development and upgrading were carried out to improve coverage and ensure uninterrupted connectivity of the radio communication system. Operational component of all these activities were performed by Radio Communication Technicians attached to the planning division.

- **Administration of GIS Unit**

Maps were prepared for the following purposes and themes using the GPS data were collected in the field.

- Existing and proposed electric fences.
- New wildlife administrative boundaries.
- New proposed elephant conservation areas and proposed managed elephant reserves.
- Maduganga and Akurala sanctuaries.

In addition maps on specific themes were prepared on the request of different divisions of head office and field offices.

- **Progress of Action Plan Activities - 2012**

Table 1.2 indicates the progress of action plan activities implemented by Planning & ICT division in 2012.

Table 1.2: Progress of Action Plan Activities - 2012

S.N.	Activity	Physical Progress	Financial Progress (Rs. '000)
1	Automation of National Parks Upgrading the existing system Purchasing of 01 laptop computer for HP NP	Upgrading in progress. One laptop was purchased.	107
2	Purchasing of Telephone units (50Nos) only for HO	25 Nos were purchased.	186
3	Modification & Upgrading Computers of DWC WAN	Accomplished	536
4	Purchasing of Desktop computers(02) with printers and UPS	02 computers, 02 printers and 02 UPS were purchased.	220
5	Maintenance of Radio communication system and purchasing of communication accessories	Continuously maintained. SLTI fixed assets magt. System was purchased.	71
6	Procurement battery for radio communication system (100Nos)	50 Nos were purchased.	307
Total			1427

Chapter 2

NATURAL RESOURCE DIVISION

2.1. Main Activities and Responsibilities

- Preparation and revision of Management Plans for protected areas.
- Preparation and revision of resource inventories for protected areas.
- Reviewing the PA Network and carrying out PA declarations.
- Survey and demarcation of PA boundaries.
- Review, monitoring and formulation of policy for wildlife habitat management; water resources and grassland management.
- Implementation of Invasive species control activities.
- Management of fire belts and wildlife habitat components.
- Coordination and supervision of pollution control and species recovery plans.
- Conducting EIA for development activities proposed in PAs
- Participating EIA process of development projects of the country.
- Working as administrative authority of Ramsar convention in Sri Lanka.

2.2.1 Establishment of Protected Area Network

- Survey and boundary demarcation were carried out to strengthen the protected area network. Table 2.1 shows the progress of boundary demarcation activities carried out in 2012
- Sign boards were manufactured and erected along the boundaries of protected areas. Table 2.2 shows the detail of establishment of sign boards in protected areas.

Table 2.1: Boundary Demarcation - 2012

WildlifeRegion	Protected Area	Total length of Demarcated/No of posts
Anuradhapura	Eastern boundary of Wilpattu National Park	13 km (129 Posts)
Central	VRR Sanctuary	151 Posts
	Haggala Sanctuary	121 Posts
Eastern	Panama Kudumbigala Sanctuary	13 km (129 posts)
	Galoya National Park	100 Posts
Polonnaruwa	Somawathiya National Park	600 Posts
	Maduruoya National Park	121 Boundary posts
Western	Maduganga Sanctuary	3 km

Table 2.2: Establishment / Rehabilitation of Sign Boards – 2012

WildlifeRegion	Name of Protected Area office	No. of Sign Boards
Anuradhapura	Mihinthale Sanctuary	4'x2' - 04 10'x15' - 01
Central	VRR Sanctuary	16
	Regional Office (Central)	01
	Unagolla	05
	Galwaysland	09
	Haggala	02
Eastern	Kumana National Park	07
	Panama Kudumbigala Sanctuary	16
Polonnaruwa	Pigeon Island	03
	Regional Office (Polonnaruwa)	01
Southern	Ussangoda National Park	01
	Regional office (Southern)	01
	ETH Udawalawa	03
Uva	Regional Office (Uva)	01
Western	Horagolla National Park	12 (Rehabilitated)
	Horagolla National Park	02 (Established)
	Muthurajawela Sanctuary	12
	Sri jayawardanapura Sanctuary	5
	Regional Office - Western	1
	Maduganga	1

2.3. Habitat Enrichment for Wildlife

Removal of the invasive species, management of grasslands and maintenance of the fire belts are the major activities conducted under habitat enrichment. Tables 2.3, 2.4, 2.5, 2.6 and 2.7 show the details of the habitat enrichment activities carried out in 2012.

Table 2.3: Management of Grasslands in Wildlife Regions – 2012

WildlifeRegion	Protected Area	Extent (ha)
Western	Horagolla National park	1/12 ha (maintained)
	Horagolla National Park	1/5 ha (Established)

Table 2.4: Removal of Invasive Species - 2012

WildlifeRegion	Sanctuary / Park	Extent (ha/Acr)
Anuradhapura	Removing Eucalyptus in Thabbowa Sanctuary	138'x74' trees - 20
	Removing <i>Prosopis juliflora</i> in Thabbowa Sanctuary	21 ha
Eastern	Removing invasive species of both side of main road of Kumana National Park	30.13 ha
	Removing invasive species in Lahugala National Park	Acr 08
Southern	Removing <i>Lantasp</i> in Udawalawa National Park	62.5 ha
Uva	Removing <i>Lantasp</i> in Yala National Park	01 ha
Western	Removing <i>Anonasp</i> in Bellanvila Attidiya Sanctuary	2.5 ha

Table 2.5: Maintenance of Fire Belts - 2012

Wildlife Region	Protected Area	Extent (ha/km)
Central	VRR Sanctuary, Keerthibandarapura	03 ha
	VRR Sanctuary, Unagolla	04 ha
Southern	Udawalawa	30 km

Table 2.6: Tree Planting Programmes - 2012

Wildlife Region	Protected Area	Quantity (Nos. of trees)
Eastern	Bagura Lagoon – Kumana NP	1500Nos
	Kumana Villuwa – Kumana NP	1500Nos
Polonnaruwa	Wasgamuwa NP	01 ha (156 trees)Nos
Western	Kahapola Ridgale Estate	100Nos

Table 2.7: Construction of new water ponds - 2012

Wildlife Region	Protected Area	Quantity (Nos.)
Eastern	Inside the Kumana National Park	04

2.4 Wildlife Conservation Activities under Moragahakanda Project

Project component on wildlife conservation of Moragahakanda development project is implemented by DWC. Priority concern under these activities is to minimize Human Elephant Conflicts in the area. Table 2.8 gives a full account of wildlife activities under Moragahakanda Project.

Table 2.8: Wildlife Conservation Activities under Moragahakanda Project - 2012

S.N.	Activity	Financial Allocation (Rs.'000)	Physical Progress	Financial Progress (Rs.'000)
1	Training	135	100%	135
2	Sandawasala Kanda - Pubbiliya electric fence	6358	Tender amended. Works in progress.	846
3	Madirigiriya D – electric fence	13,944	Purchasing of fence equipment completed.	3055
4	Wasgamuwa Randunne Wawa – electric fence	7,500	-	183
5	Grassland management in Angammedilla NP	163	Works in progress.	136
6	Fire belt management in VRR Sanctuary.	5,000	17%	399

7	Sign boards in Wasgamuwa NP	774	Completed	166
8	Mahawelisystem G – electric fence	20,000	Construction of 4 New Power huts completed.	15197
9	Purchasing of two single cabs	6,000	Completed and assigned to field.	5687
10	Wasgamuwa south – electric fence	5,000	Purchasing of thing for Electric Fence	14699
11	Pubbiliya – electric fence	7,658	Construction in progress	15623
12	Construction of Rajjamma beat office	3,500	50%	536
13	Construction of Kaudulla beat office	3,500	100%	783
14	Training for Wasgamuwa wildlife staff	18	100%	18
<i>Total</i>		50,000		4342

Table 2.9: Progress of Action Plan Activities - 2012

S.No.	Activity	Physical Progress	Financial Progress Rs. ('000)
2001-1 Establishment of Protected Area Net Work			
1	Boundary Demarcation of Somawathiya N.P (Commitment 2011)	519 of boundary posts were erected	1,652
2	Boundary demarcation in Maduruoya NP	121 boundary posts were erected	381
3	Demarcation of boundary in VRR Sanctuary	100% completed	497
4	Demarcation of boundary to work new lands for Haggala SNR	121 boundary posts were erected	59
5	Rehabilitation of sign boards in Unagolla beat, VRR Sanctuary	5 sign boards were rehabilitated	48
6	Rehabilitation of sign boards in Galwaysland NP	16 sign boards were rehabilitated	25
7	Boundary demarcation of Kahalla-Pallekale Sanctuary	Project was canceled and funds diverted for Boundary demarcation of Wilpattu NP	509

8	Sign Boards / Demarcation of wildlife protected area in Northern Province	Funds was not enough transferred for Anuradhapura region. Sign boards in Mihinthale Sanctuary	206
9	Boundary demarcation in Madu Ganga Sanctuary	Completed	453
10	Preparation of awareness sign boards at park office, Horagolla NP	Completed	27
11	Identification and demarcation of boundaries in Southern boundary of Galoya NP	97 of post were erected(6.5Km)	428
12	Identification and demarcation of Northern boundary of Panama-Kudimbigala Sanctuary	129 boundary posts was erected	465
13	Sign boards for Ussangoda NP	100% completed	48
14	Rehabilitation of sign boards for all regions & survey charges	<ul style="list-style-type: none"> • Translation charges for declaration of new protected areas and • 18 sign boards (12 - Horagolla NP, 05-Sri Jayawardenapura Sanctuary, 01-AD(Western)office, 01-Madugaga Sanctuary 01) were rehabilitated) • new sign boards (02 (AD southern office, 01-AD Uva office, 01- ETH Udawalawa), AD(Eastern) 01, AD(Polonnaruwa) 01 AD(Central) 01 AD(Southern) 	393
15	News Pepper advertisement	Completed	103
16	Gazette notification for Horowpathana NP	Completed	4
17	Preparation of Sign board for Horowpathana NP	04 Sign boards was completed	473
18	Establishment of 05 sign boards at Ritigala ETH	5Nos(8'x4'-1Nos, 10'x15,-4Nos) Sign boards was completed	405
19	Mapping Pubudugama Area	Completed	4
20	Sign board for Pigeon Island NP- Commitment	3 Nos. were completed	143
21	Allocation of new wildlife regional offices -- 11 offices	02 board was completed	43
22	Acquiring base plan for Minneriya-Giritale NR and Elahera-Giritale Sanctuary	completed	2
23	Court Charges	Payment completed	402
24	Establishment of memorial plaque in Mihinthale Sanctuary for Environment day	completed	211
25	Sign board for Mihinthale Sanctuary	Completed	205

26	Restructuring of Hikkaduwa NP	Completed	44
27	Removing Alternative Camp site in Yala NP	Completed	9
Sub Total			7,530
2105-01 :Habitat Enrichment in Protected Areas			
28	Habitat management in Hog deer project in Horagolla NP	Removing Diyapara completed (1.5 Ha) and preparation of new grassland(05Ha)	89
29	Habitat enrichment in BellanvilaAttidiya Sanctuary (Removing Acacia, Maintenance of grassland in Sobaketha premises)	Completed(2 Ha)	61
30	Under brushing both miner road sides in Kumana NP	100% Completed	864
31	Removing of Agada and <i>Salvenia</i> in Kitulana tank, Lahugala NP	100% Completed	16
32	Habitat enrichment (50 h) at ETH, Udawalawa	Completed	202
33	Maintenance of Grassland(1 h) at ETH, Udawalawa	Completed	70
34	Removing of <i>Lantana</i> (100 h) in Udawalawa NP	100% completed(12.75 ha-High density and 50ha low density)	969
35	Maintenance of fire belt (10 Km) in Udawalawa NP	10 Km was Completed	683
36	Maintenance of Lantana Removed area in Lunugamvehera NP.	In progress	466
37	Removing of <i>Prosopisjuliflora</i> in Thabbowa Sanctuary	21 ha was completed	991
	Miscellaneous		50
38	Preparation Norms for Removing Invasive species in Wasgamuwa N.P.	100% completed	34
39	Preparation of Norms for removing <i>Lantana</i> in Yala NP.	1 ha removed	15
40	Allocation for supplying water forKumana NP.	Water supply for Kumana NP	93
41	Removing <i>Prosopisjuliflora</i> in Thabbowa Sanctuary	100% completed	12
42	Preparation of norms for removing invasive species in Wasgamuwa NP.	100% completed	34
43	Tree planting programme in Rigidale state	100% completed	30
44	Under brushing both sides of minor roads in Lahugala NP	100% completed	88
Sub Total			4,767
Grand Total			12,297

Chapter 3

LAW ENFORCEMENT DIVISION

3.1. Main Activities and Responsibilities

- Implementation of the Fauna and Flora Protection Ordinance (FFPO)
- Declaration of Protected Areas (PAs)
- Preparation of regulations and amendments for FFPO
- Consultation to field staff on enforcement of FFPO

3.2. Performance in detail

3.2.1. Implementation of Fauna and Flora Protection Ordinance

- **Registration of Domestic Elephants and Tusks**

Registration of newly born elephants to domesticated elephants, Registration of tusks in possession of any person and renewal of the registration of elephants and tusks is a mandatory legal requirement according to FFPO.

In 2012 registration renewal was done for 130 elephants and 20 tusks. The revenue earned from the registration is Rs. 68,800.00

- **Detection of Wildlife Offences**

Six hundred and fifty one (651Nos) wildlife offences have been detected and culprits were taken to courts during the reporting period. Revenue collected as fines imposed by court is Rs. 24,090,000.00. Regional distribution of cases prosecuted in 2012 is given in Table 3.1. Distribution of number of court cases prosecuted and revenue generated from fines imposed by court during the period of 2008 to 2012 are given in Figures 3.1.

Table 3.1: Number of Cases Prosecuted – 2012

Wildlife Region	No. of Cases
Anuradhapura	57
Central	21
Eastern	67
Mahaweli	65
North - Western	59

Southern	129
Uva	85
Western	14
Flying Squad (Head Office)	32
Total for 2012	529

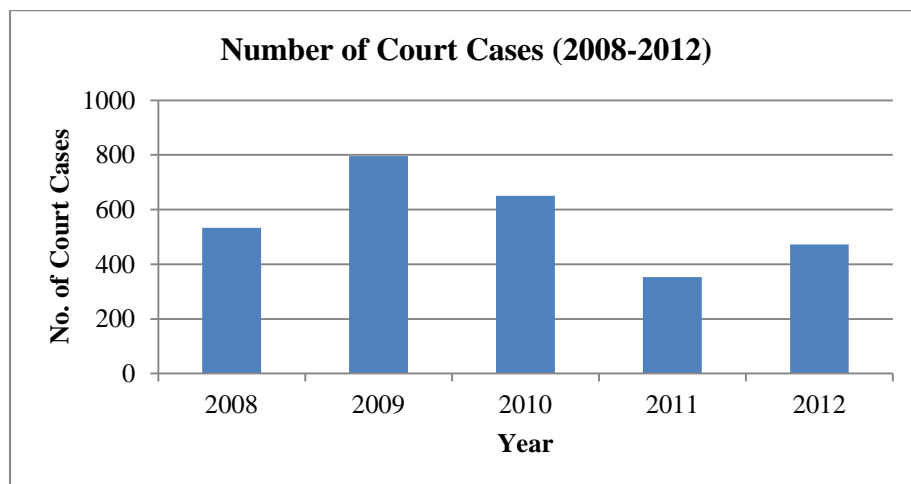


Figure 3.1: Annual number of court cases

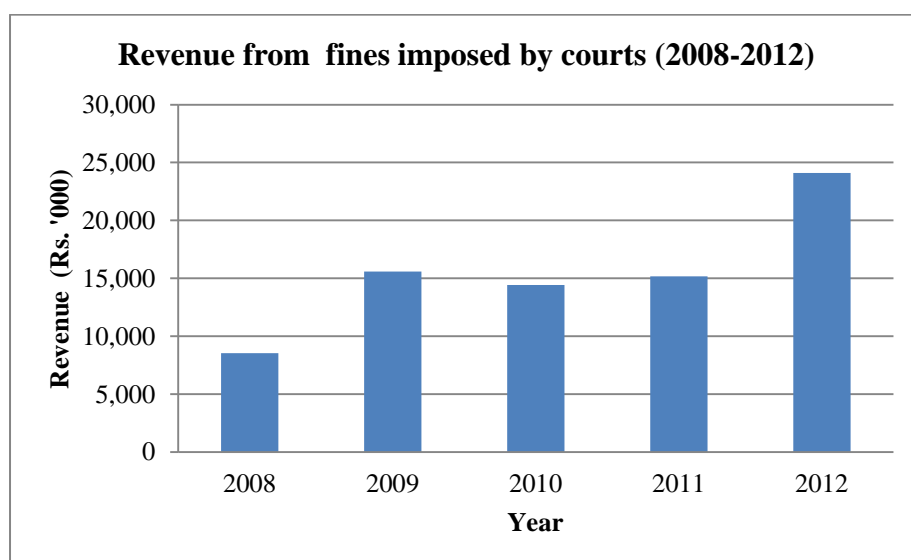


Figure 3.2:Revenue from fines imposed by courts (2008-2012)

Funds allocated under the annual action plan for the protection and law enforcement division was utilized to improve supporting infrastructure for law enforcement. The progress of the action plan activities are given in the table 3.2.

Table 3.2: Progress of Action Plan Activities for 2012

S.No.	Activity	Physical Progress	Financial Progress Rs. ('000)
1	Capacity Building on Court Procedures (1)	• printing of Gazette notification for Sea mammals, • Preparation of Gazette notification for registration of domestic elephants, • 01 Awareness pro. - AD(Eastern),	275
2	Introduction of New Offence & Progress Monitoring system for Court Cause(Parallel to SLaWEN)	Preparation of index for identification of inland fish spps parallel to preparation of Wildlife operation manual, and 01 training prog. For it)	1517
3	Conducting "SARC" Regional Meeting of Sri Lanka Wildlife Enforcement Network -2012	Successfully completed	3765
4	Sri Lanka Wildlife Enforcement Network Activities - Capacity Building	• 01 GPS training prog., Fire arms handling prog, were completed, • Petrol in dry seasons (Kumana, Yala Block III)	444
5	Removing encroachers in Haggala SNR	Complete baseline survey for collecting information	86
Total			6087

Chapter 4

ELEPHANT CONSERVATION DIVISION

4.1. Main Activities and Responsibilities

- Implementation of national elephant conservation policy.
- Maintaining and updating a database on elephant related data and information.
- Establishment of elephant conservation areas including elephant corridors.
- Payments of compensation for damages due to HEC.
- Construction and management of physical barriers against elephant movements in settlements such as power fences, live fences and other innovative solutions.
- Capture and translocation of elephants.
- Organizing elephant drives and monitoring the progress.
- Procurement of goods and equipments related to elephant management.

Performance in detail

4.2.Human Elephant Conflict (HEC)

Elephant population of Sri Lanka is currently facing serious threats to its existence due to continuous shrink of favorable habitats, due to changes in land use patterns and degradations of the quality of existing habitats. As a result a conflict has been arising causing property damages, injuries and deaths of both human and elephants. Data pertaining to the elephant deaths, human deaths, injuries due to elephant attacks and property damages are illustrated in the table 4.1, 4.2, 4.3, and 4.4 and Figures 4.1, 4.2, 4.3 and 4.4.

Table 4.1: Regional Distribution of Elephant Deaths from 2008-2012

Wildlife Region	Annual No of Elephant Death					Total
	2008	2009	2010	2011	2012	
**Anuradhapura	–	–	–	–	19	19
Central	4	3	2	3	5	17
Eastern	23	41	42	33	47	186
North Western	92	66	66	82	66	372
Polonnaruwa	65	72	74	90	72	373
Southern	30	30	35	36	22	153
*Uva	–	–	–	–	19	19
YalaBundala	10	16	8	11	–	45
Total	224	228	227	255	250	1184

* New wildlife Region established in June 2012

** New Regional Office established in August 2012

Table 4.2: Categorization of Elephant Deaths - 2012

Region	Male	Female	Juvenile	Unknown	Total
**Anuradhapura	14	4	–	–	19
Central	3	0	1	1	5
Eastern	30	17	–	–	47
North Western	30	26	1	9	66
Polonnaruwa	39	29	–	4	72
Southern	12	5	–	3	22
*Uva	13	3	–	3	19
Total	141	84	2	21	250

Table 4.3: Reasons for Elephant Deaths - 2012

Region	Gun Shot	Electrocuted	Poisoned	Hakka Patas	Train Accident	Unknown	Accident	Natural	Other Causes	Total
**Anuradhapura	2	2	0	5	2	2	5	0	1	19
Central	2	0	0	0	0	2	0	0	1	5
Eastern	14	4	2	6	0	12	2	6	1	47
North Western	17	5	3	12	3	15	4	2	5	66
Polonnaruwa	13	7	0	16	5	23	3	4	1	72
Southern	1	2	1	0	0	15	2	–	1	22
*Uva	1	1	0	0	0	11	2	3	1	19
Total	50	21	6	39	10	80	18	15	11	250

Table 4.4: Annual Number of Human Deaths due to Elephant Attacks

Region	2008	2009	2010	2011	2012	Total
**Anuradhapura	–	–	–	–	12	12
Central	3	3	4	6	0	16
Eastern	9	10	14	5	18	56
Mahaweli	16	14	14	22	20	86
North Western	33	19	34	20	20	126
Southern	8	3	9	6	7	33
*Uva	–	–	–	–	1	1
YalaBundala	2	1	6	1	1	11
Total	71	50	81	60	79	341

Table 4.5: Categorization of Human Deaths due to Elephant Attacks

Year	Male (Adult)	Female (Adult)	Children	Total
2008	57	13	1	71
2009	43	7	0	50
2010	64	16	1	81
2011	50	10	0	60
2012	64	13	2	79
Total	278	59	4	341

Table 4.6: Regional Distribution of Injuries to Human due to Elephant Attacks (2008-2012)

Region	Annual Number of Injuries					
	2008	2009	2010	2011	2012	Total
**Anuradapura	–	–	–	–	0	0
Central	0	0	4	1	0	5
Eastern	11	5	8	7	15	46
Mahaweli	10	22	27	21	16	96
North Western	38	12	37	25	27	139
Central	0	0	4	1	0	5
Uva	–	–	–	–	0	0
Yala-Bundala	4	1	3	0	2	10
Total	63	40	83	55	60	301

Table 4.7: Regional Distribution of Property Damages (2008-2012)

Region	Annual Number of Property Damages					
	2008	2009	2010	2011	2012	Total
**Anuradhapura	–	–	–	–	58	58
Central	35	40	64	81	26	246
Eastern	53	155	266	304	267	1045
Mahaweli	180	230	670	469	429	1978
North Western	233	203	812	247	2269	3764
Southern	138	131	145	124	108	646

Uva	-	-	-	-	21	21
Yala-Bundala	45	68	40	0	5	158
Total	684	827	1997	1225	3183	7916

4.2.1. Mitigation of Human Elephant Conflicts (HEC)

At this alarming level of HEC, DWC is actively engaged in mitigating HEC. DWC implement various strategies under the national policy mitigate HEC. Notably electric fence, elephant drives, distribution of thunder and serpent flare, habitat enrichment, establishment of habitat connectivity are the major concerns of DWC at presence. As a multifaceted approach in mitigating HEC, DWC has been implementing ‘Gajamituro’ Programme since 2008.

4.2.2. GajamituroProgramme

Gajamituroprogramme was formulated to implemented measures to mitigate human elephant conflict in 58 Divisional Secretary divisions in 18 districts. Activities implemented under GajamituroProgramme were construction of electric fences, establishment of 15 elephant control units, procurement of thunder and serpent flares, payment of compensation for human death, injuries and property damages and procurement of field vehicles.

Gajamituroprogramme is a type of participatory management and implementation project. It has been formulated to gain the support of national as well as village level of offences and individuals. Following is the simplified organization of Gajamituro Action committees. For the year 2012, Rs. 200 million was allocated for this project.

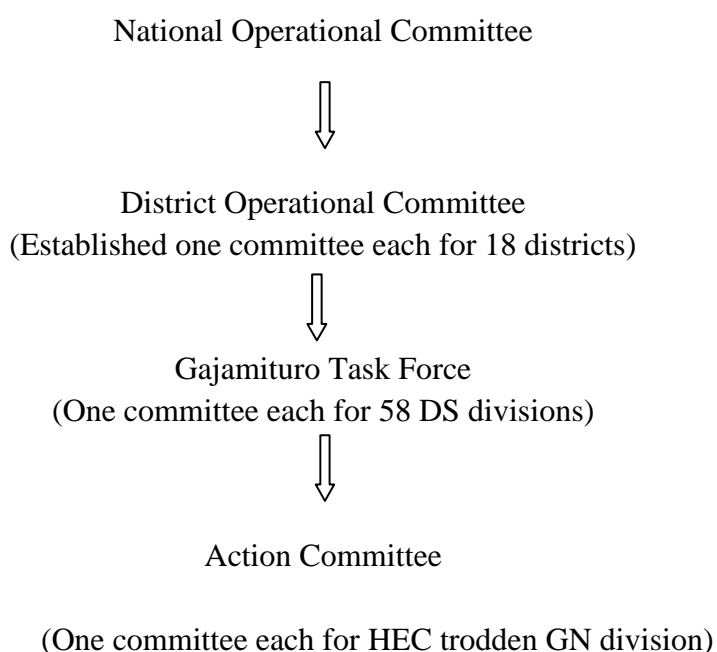


Table 4.8:Progress of GajamithuroProgramme

S.No.	Activity	Physical Progress	Financial Progress Rs. ('000)
1	Fence to be erected	377.60 K m	133,746
2	Administration/ E Fence labors	Completed	17,739
3	Allocation to EC Units	Completed	4,500
4	2011 commitments- Balance works of ECU in Batticaloa	Completed	3,108
5	2011 commitments- Balance works of Causeways in Lunugamwehera	Completed	950
6	2011 commitments-bill payments for STC	Completed	14,074
7	Elephant damages	Payments made	632
8	Construction of road barrier, under brushing, construction(06 ac of Shade and gravelling road in Ritigala ETH,	Completed	317
	Sub Total		177.6

4.2.3. Electric Fencing Programme

The electric fence is being used as a psychological barrier against the wild elephants since 1966 in Sri Lanka. Today it has become a leading management tool in mitigating elephant depredations in agricultural and plantation areas.

In the year of 2012 under GajaMithuroprogramme electric fences of 377.6 Km in length were constructed. Necessary reconstruction and repairs were also done to the existing fences (Table 4.9).

Table 4.9:NewElectric Fences (EF) Erected - 2012

Name of Electric Fence	Length of EF(Km)
Ihalakuwewa, Katuakeliyawa	12.00
Manampitiya, Katuwanwila	8.00
Diyakepillla village fence	5.75
KahallaKarawilagala	12.00
Weligaththa	20.00
Piyanhala, Unnachchi	40.00
Pullamale, Kopaweli	23.00
Theripeha, Victoriya	25.00
Eriyawa village fence	5.60
Kalawewa	6.50
Udawalawa	18.00
Kohombadigana	2.00

Dematapelessa	4.00
Hungamalaoya	2.00
Sigiriya	3.00
Minipe, Bulathwelkandura	5.50
Hunuwilagama, Bogoda	39.50
Total	231.85

4.2.4. Distribution of Thunder Flare and Serpent Flare - 2012

Two types of specially designed crackers viz; Thunder flare and Serpent flare are annually purchased in bulk and distributed among wildlife offices. Villager in HEC trodden areas barrow the cracks from wildlife officer. Table 4.10 shows annual purchase and table 4.11 illustrate annual distribution of these cracks.

Table 4.10: Procurement of Thunder Flares and Serpent Flares - 2012

Type	Quantity Purchased	Expenditure (Rs.)
Thunder Flame (Large)	239,000	20,013,000.00
Thunder Flame (Small)	125,000	7,962,825.00
Serpent Flames	150,000	15,488,200.00
Total	514,000	43,464,025.00

Table 4.11: Distribution of the Thunder Flares and Serpent Flares - 2012

Wildlife Region	Thunder flare		Serpent Flare
	Small	Big	
Anuradhapura	31,500	51,000	33,000
Central	10,500	14,000	9,000
Eastern	28,650	53,500	29,800
North-Western	14,000	23,800	17,160
Polonnaruwa	33,300	41,400	29,600
Southern	17,300	34,500	23,000
Uva	7,450	13,000	8,500
Total	142,700	231,200	150,060

4.2.5. Compensation Scheme for Damages Caused by Wild Elephants

A compensation scheme approved by the cabinet is being implemented to reimburse the economic damages caused by elephants to the public. Compensation paid in 2012 is given in detail in the Tables 4.12 & 4.13.

Table 4.12:Details of CompensationPayment 2012 Jan. 01- to 2012 Aug. 31

Region	Human Death		Injury Damage		Property Damage	
	No of Incidents	Amount Paid (Rs: Mn)	No of Incidents	Amount Paid (Rs: Mn)	No of Incidents	Amount Paid (Rs: Mn)
Central	1	0.1	0	0	22	0.22
East	3	0.3	11	0.150	212	3.50
Mahaweli	13	1.3	12	0.200	295	6.13
North Western	14	1.4	26	0.414	2262	5.06
Southern	10	1.0	0	0	92	1.57
Yala	1	0.1	2	0.006	5	0.09
Total	42	4.20	51	0.77	2888	16.57

Total Compensation Paid Rs. 21.54

Table 4.13:Details of Compensation payment 2012 Sep. 01- to 2012 Dec. 31

Region	Death Damage		Injury Damage		Property Damage	
	No of Incidents	Amount Paid (Rs: Mn)	No of Incidents	Amount Paid (Rs: Mn)	No of Incidents	Amount Paid (Rs: Mn)
Anuradhapura	8	0.8	0	0	58	1.57
Central	0	0	0	0	4	0.07
Eastern	10	1	4	0.05	55	0.93
North Western	3	0.3	1	0.002	7	0.108
Polonnaruwa	7	0.7	1	0.07	134	2.18
Southern	2	0.2	0	0	16	0.21
Trincomalee	1	0.1	0	0	0	0
Uva	1	0.1	0	0	21	0.38
Total	32	3.2	6	0.122	295	5.448

Total Compensation Paid Rs. Mn 8.77

(As on December 31st 2012)

4.2.6. Capture and Translocation of Elephants - 2012

Sixteen marauding elephants were captured and released to Kumana and MaduruOya National Parks. These activities were funded by wildlife conservation fund. Tables 4.10 & 4.11 illustrate the distribution of elephant captures & translocations.

Table 4.14: Capture and Translocation of Elephants - 2012

Wildlife Region	No. of Captured elephants	Expenditure (Rs.)
Anuradhapura	06	2,970,427.00
Central	02	666,821.00
Eastern	01	215,000.00
Polonnaruwa	03	861,006.00
Southern	04	1,512,480.00
<i>Total</i>	16	6,225,734.00

4.2.7. Elephant Drives - 2012

Elephant drives are carried out to chase the elephants away from the conflict areas and to content them in protected areas. In 2012 DWC carried out 8 organized elephant drives. Table 4.15 illustrates the region wise information of elephant drives.

Table 4.15: Elephant Drives - 2012

Wildlife Region	Description	Approximate No of Elephants driven
Central	Welihinda, Morangahathenna to VRR sanctuary	10
	Mapakawawewa, Dambarawa to Maduruoya NP	14
North Western	Giribawa to Amunukule	85
	Mailankulama, Puttalam to Thabbowa	70
	Kotawehera, Nikaweratiya to Inginimitiya	73
	Rambakanayagama, Nawagaththegama to Thabbowa	60
	Karuwalgaswewa to Thabbowa	25
Polonnaruwa	Hathamunagala, Mathale to Alahera	16
<i>Approximate Total No of Elephants driven in 2012</i>		351

4.2.8. DayataKirula National Development Project**Table 4.16:** DeyataKirula Activities

S.No.	Activity	Physical Progress	Financial Progress Rs. ('000)
1	Electric fencing (Hunuwila-Bogoda-MalwatuOya)	1nos. energizer huts were completed and 39.5 km of length was erected	32,374

Chapter 5

RESEARCH & TRAINING DIVISION

5.1. Main Activities and Responsibilities

- Preparation of research and training plans and associated budgets for the DWC.
- Form and maintain the research committee.
- Administration and development of DWC library.
- Organizing and conducting training programmes.
- Supervision of NWTRC.

5.2. Research

DWC funds its staff for carrying out short-term research projects oriented to wildlife management. Findings of these researches proved worth applying for protected area management.

In addition DWC grant permits to research applicants to conduct research projects in its protected area network and outside the protected area network. Outside research institutions and individuals get use of this opportunity. It's mandatory to get the DWC research committee approval for such a research.

Table 5.1 provide the list of short-term research projects carried out by DWC staff and Table 5.2 the collaborative research projects conducted in the wildlife protected areas during the year 2012.

Table 5.1: Research Studies Undertaken by DWC Staff - 2012

Serial Number	Research Topic
1	Designing of a Low cost energizer for electric fence.
2	Web GIS for Nature-based Tourism Enhancement with Wildlife Management.
3	Study of Tuberculosis among wild elephants.
4	Identification of corals in Pigeon Island National Park
5	Study of Dragonflies in Minneriya National
6	Identify the failures & success of current law enforcement practices in the Department of Wildlife Conservation

7	Identification of Orchid species in Hakgala SNR
8	Survey on wildlife field officers for their adaptation to Beuocratic System
9	Identification of Mangrove species in Gangewadiya south in Wilpattu NP.

Table 5.2: Collaborative Research Projects - 2012

Serial Number	Research Topic	Collaborative Institute
01	National Bird Ringing Program at Bundala National Park	Field Ornithology Group of Sri Lanka

5.3. Training

Training programs conducted for DWC officers are divided into two distinct categories. They are,

1. Short term special training programs.
2. Regular training programs.

In addition based on the availability, foreign trainings are also offered for the DWC staff.

1. Short-term Special Training Programmes

These training programmes are especially arranged to improve the knowledge and skills of DWC officers on a wide range of subjects. Majority of these courses are conducted in collaboration with different training institutes or organizations. Details of such courses conducted in the year 2012 are given in the Table 5.3.

Table 5.3: Special Short Term Training Programmes Conducted for Wildlife Officers - 2012

S.No.	Topic of the Training Programs	No of participants	Target Group	Expenditure (Rs.)
1	Boat driving and maintenance	15	RA, WG	111,621.00
2	Tamil language – Level I	25	MFA, MA	Free
3	GPS training	30	R, RA, WG	52,350.00
4	Bungalow keepers training	15	BK, PL	66,058.00
5	GPS collaring for wild elephants	28	R, RA, WG	85,142.00

6	Diploma in Palio Biodiversity	02		Free
7	Training workshop for officials of Railway Department	70	CGR Officials	63,000.00
8	Handling of fire arms and field operations	48	R, RA, WG	400,241.00
9	Attitude Change and Positive thinking Program for DWC officials	35	R,RA,WG	
10	Court procedure	25	R,RA, WG	101,800.00
Total				1,000,212.00

n.b.:

R – Range Officer

RA – Range Assistant

WG – Wildlife Guard

DD – Deputy Director

MFA – Management and Finance Assistant

MA – Management Assistant

In addition NWTRC conducted short term training programmes. Details are given in table 5.4

Table 5.4: Short term training programmes conducted at NWTRC- 2012

S.No	TrainingProgramme	Allocation	Expenditure
1	Training for Railway Officers	29,325.00	26,756.00
2	Training on Map Reading and GPS	52,350.00	46,611.00
3	Training for Railway Officers	34,150.00	33,421.00
4	Identification of Inland fish species – Pretesting of the practical guide	43,000.00	42,511.00
5	Training for Railway Officers	34,650.00	34,603.50
6	TrainingProgrammein Elephant Management for Management Assistants	100,000.00	85,681.50
7	Awareness Programme for newly recruited Range officers	350,000.00	301,144.80
8	GPS Training	103,400.00	94,929.00
9	Habitat Enrichment	38,600.00	38,456.00
Total		785,475.00	704,113.80

2. Regular Training Programmes

The regular training courses are available only for the DWC field officers (Range officers, Range Assistants and Wildlife Guards) and training programmes conducted at National Wildlife Training and Research Centre (NWTRC) in 2012 are given in the Table 5.5.

Table 5.5: Regular Training Programmes Conducted at NWTRC - 2012

S No	Regular Training Program	Category of Trainers	Expenditure(Rs.'000')
1	Junior Certificate course in Wildlife Management	XXIX(Batch) of Wildlife Guards	639
2	Diploma Course in wildlife Management	VII Batch	1,708
Total			2,347

- **International Training**

Following are the details of foreign trainings made available for DWC staff.

Table 5.6: Foreign Training Programs Participated by Wildlife Officers- 2012

SN	Training	Designations & Number of participants	Country	Duration
01	RRC-EA Information Sharing & training programme for wetland managers.	Deputy Director (Planning & ICT), Ranger iii / 02 participants	South Korea	5 days
02	Study Tour	Deputy Director (Protection & Law Enforcement), Assistant Director (NWTC), Assistant Director (Elephant Conservation), Ranger Assistant-21 / 24 participants	India	12 days

5.5. Extension, Education and Interpretation

Conservation is abortive if tried in isolation. It needs peoples' support and appreciation. Therefore, it is necessary to have a well-informed public to encourage each and every conservation initiative that has to be implemented for the promotion of conservation.

Table 5.7 indicates the details of the Extension, Education and Interpretation conducted to the target groups such as school children, villagers and the public servants.

Table 5.7: Seminars, Exhibitions and Awareness Programmes Conducted - 2012

S.No.	Activity	Physical Progress	Financial Progress Rs. ('000)
1	Awareness programmes to mark World Wetland Day	Completed 04 Nos. (Uva- 01nos , Western-01nos, North Western-01nos, Eastern-01nos)	154

2	Awareness programmers to mark Biodiversity day - Mahaweli& Central Regions	Completed 7 Prog. (Uva- 01nos , Western-01nos, North Western-01nos, Eastern-01nos, Southern -01nos, Eastern -01nos, Polonnaruwa -01nos)	241
3	Awareness programs to mark Environment day	Completed 4 Prog. (Central- 01nos, Southern -01nos , Mahaweli -01nos, Western 01nos, Eastern 01nos)	172
4	Special awareness during Poson festival- Mihintale and Sithulpauwa	1 Prog. (Uva) was completed	111
5	Special awareness programme during Esala festival-Kataragama	1 Prog. (Uva) was completed	87
6	Seminar on wildlife conservation for school children - 10 in each wildlife AD regions	Completed 01 programme in AD (Central)-10nos AD(Western) – 10nos, AD(Ova),- 10nos AD(Southern) – 10nos AD(Eastern)- 10nos AD(Anuradapura) 10nos AD(Polonnaruwa)- 10nos	439
7	Awareness Programmes for Government Officers - All Region, 2 in each regions	Completed 01 programme in AD (Central)-02nos AD(Western) – 02nos AD(Ova),- 02nos AD(Southern) -02nos AD(Eastern)- 02nos AD(Anuradapura) 01nos AD(Polonnaruwa)- 02nos	302
8	Awareness programmers on request & Special Seminars, workshop & exhibitions	Completed 11 programme in AD (Central)-01nos AD(Western) – 02nos AD(Yala/Bundala),- 01nos AD(Eastern)- 02nos AD(North/Western) 04nos AD(Mahaweli)- 01nos	163
9	Preparation of Interpretation materials for Kumana and Galoya	completed	176
10	Publicity	Completed 01 awareness programmers for 38 media persons	76
11	Printing of Educational posters and leaflets	Printing 5,000 copies of Fish posters	
12	Production of Educational Documentary		
13	Any special events	<ul style="list-style-type: none"> • 01 Exhibition was completed, • Printed for GovigenUdana News Pepper, • Awareness programme government officer(Kataragama range)- 01nos, • School children's (Anuradapura)- 02nos, • AD (Sothern) -Awareness prog. Of 	870

		crocodile 02nos, • Western 01nos, • AD (Eastern) 01nos, Interpretation material Kumana/Galoya, • 04 TV prog. was purchased, • 2,500 of copies, Wildlife magazine was printed, • 20,000 of hands out was printed for 2012 DayataKirula	
	Miscellaneous		
14	Payments for “WanathareKathandere” radio programme	Completed	383
15	Preparation of glass cover for Leopard scotch in Minneriya NP	Completed	16
Total			3,190

5.6. Publications of the Department

Following publications (Table 5.8) were completed in 2012, Posters were made available at the park offices for sale, and other publications were distributed among relevant offices and officers.

Table 5.8: Publications - 2012

Publication	No. of Copies (Nos)	Expenditure (Rs. '000)
Annual Wildlife Magazine	2,500	305
Leaflets on “WanadiviSampathRekaganeemata”	20,000	85
Radio Programme on “WanathareKathandere”	4	140
Video Documentary Programmes	4	14
‘GowijanaUdanaya’ newspaper	10 issues	47
Wildlife Time Table	10,000	69
Total Expenditure		660

5.7 Other Activities

• International Conventions

DWC has been vested with the authority to implement the following international conventions, of which Sri Lanka is signatory.

1. **CITES (the Convention on International Trade in Endangered Species of Wild Fauna and Flora)** is an international agreement between governments. Its aim is to ensure that international trade in specimens of wild animals and plants does not threaten their survivals.

Table 5.9: Number of CITES Permits Issued (2007-2012)

Year	Number of (Nos) Permits Issued	Income (Rs. '000')
2007	768	384.0
2008	781	390.5
2009	764	382.0
2010	685	342.5
2011	596	522.0
2012	722	491.8

2. **The Convention on the Conservation of Migratory Species of Wild Animals (also known as CMS or Bonn Convention)** aims to conserve terrestrial, marine and avian migratory species throughout their range.
3. **The Convention on Wetlands (Ramsar, Iran, 1971)** Also referred as the "Ramsar Convention" is an inter governmental treaty that embodies the commitments of its member countries to maintain the ecological character of their Wetlands of International Importance and to plan for the "wise use", or sustainable use, of all of the wetlands in their territories.

Therefore understanding the importance of active participation on the implementation of international conventions in Sri Lanka, DWC has taken steps to send its representatives to participate at the relevant meetings, symposium and workshops.

DWC officers were participated for the following international meetings & workshops

Table 5.10: International Meetings & Workshops Represented by DWC-2012

SN	Workshop & Meeting	Participant	Country	Duration (days)
01	To evaluate suitability for maintaining elephant at Japan Zoo.	Deputy Director(Wildlife Health)	Japan	8 days

02	To evaluate suitability for maintaining elephant at Tama Zoo.	Deputy Director(Wildlife Health)	Japan	8 days
03	Regional Asian Elephant veterinary workshop	Deputy Director(Wildlife Health)	Indonesia	5 days
04	Regional workshop on scientific & technical support for implementation of the RAMSAR convention.	Deputy Director (Planning & ICT)	South Korea	3 days
05	Capacity building workshop of Asian Medicinal plants.	Assistant Director (Research & Training)	Bhutan	3 days
06	Improving marine protected areas management effectiveness in the grater Indian Ocean region.	Assistant Director (North Western)	Thailand	4 days
07	Seminar on Management& protection of natural reserves for developing countries.	Assistant Director (Natural Resource)	China	29 days
08	3 rd Regional workshop on multi sect oral collaboration on zoo nose prevention & controlling the way.	Veterinary Surgeon	Indonesia	2 days
09	Highly pathogenic avian influenza.	Veterinary Surgeon	Nepal	2 days
10	To evaluate suitability for maintaining elephant at Praha Zoo.	Veterinary Surgeon	Czech Republic	9 days
11	To evaluate suitability for maintaining elephant at Tehran Zoo.	Veterinary Surgeon	Iran	4days
12	IUCN world conservation congress.	Education & Training officer	South Korea	14 days
13	The workshop on Regional colloquium on mangrove Re	Ranger 1	India	5 days
14	BOBLME – SEAFDEC – FAQ regional workshop & the BOBLME MPA working group meeting.	Range Assistant	Thailand	4days

5.8. DayataKirula National Development Project

Table 5.11: DeyataKirula Activities

S.No.	Activity	Physical Progress	Financial Progress Rs. ('000)
1	2012 DayataKirula Exhibition	Completed	1,311

Chapter 6

VISITOR SERVICES, ECOTOURISM & COMMUNITY OUTRICH DIVISION

6.1. Main Activities and Responsibilities

- Preparation of visitor services plans and budgets.
- Preparation of visitor centre exhibits and display materials.
- Introduction of new tourist packages.
- Diversification of tourist activities.
- Promotion and marketing of VSE activities.
- Establishment of information centers both in and outside PAs.
- To obtain proactive involvement of communities in the conservation process, through community empowerment in order to reduce dependency on Protected Areas.
- To create awareness of conservation among the general public by conducting educational & extension programs.

6.1.1. Performance in detail

6.1.1.1. Visitors and Revenue

- DWC earns the large part of its revenue from visitor services offered at wildlife national parks. In 2012 total revenue from visitor services is Rs.701,059,366.74(Table 6.1).

Table 6.1: Annual Income from Visitor Services

SN	Location	Revenue(Rs.)
01	Udawalawa ETH	6,952,355.00
02	Yala-Palatupana	342,585,737.12
03	Yala-Katagamuwa	7,784,823.54
04	Yala-Galge	94,818.72
05	Bundala	9,574,461.03
06	Horton Plains	121,242,329.26
07	Udawalawa	69,619,071.71
08	Wilpattu	25,903,702.36
09	Wasgamuwa	6,138,549.71
10.	Minneriya	65,552,337.79
11	Lunugamvehera - Thanamalwila	2,261,342.98
12	Lunugamvehera-Galge	150,796.80
13	Lunugamvehera-Karawila	45,627.98
14	Kaudulla	18,041,018.80
15	Horagolla	273,745.52
16	Maduruoya	273,794.24
17	Kumana-Okanda	6,282,484.16
18	Galoya	1,563,081.52
19	Galoya-Nilgala Entrance	70,296.80
20	Ampara-Eggalooya Bungalow	136,080.00
21	Angammedilla	313,895.28
22	Galwaysland	181,852.00

23	Giritale	287,710.00
24	Madunagala Beat Office	0.00
25	Lahugala	174,232.96
26	Pigeon Island	15,035,986.88
27	Hikkaduwa	406,012.50
28	Ritigala	4840.09
29	Mihintale (Staff Lodge)	20,328.00
30	Kataragama (Staff Lodge)	64,988.00
31	Nallathanniya	23,066.00
	Revenue	701,059,366.74

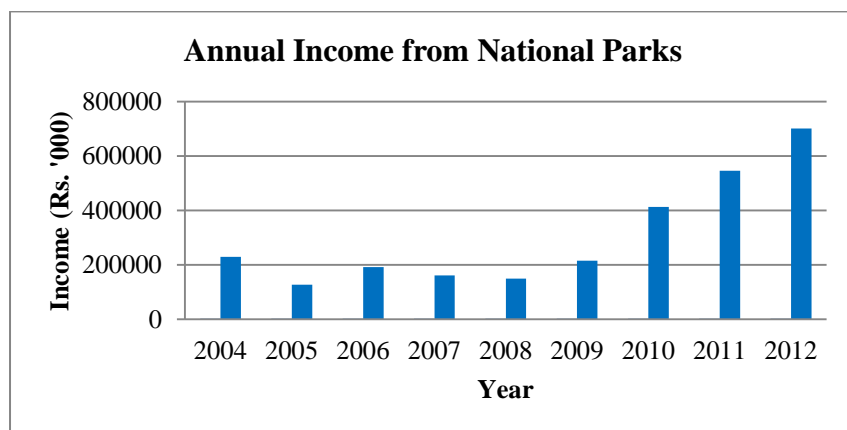


Figure 6.1: Annual Income from Visitor Services (2004-2012)

Table 6.2: Visitor Summary - 2012

National Park	Visitors		
	Local	Foreign	Total Visitation
Yala	217,898	121,735	339,633
Horton Plains	184,744	39,123	223,867
Udawalawa	52,995	23,082	76,077
Wasgomuwa	22,891	812	23,703
Minneriya	37,833	25,020	62,853
Bundala	6,397	4,853	11,250
Horagolla	6,637	2	6,639
Kaudulla	8,930	6,443	15,373
Lunugamwehera	3,115	48	3,163
Galoya	2,523	332	2,855
Kumana	18,644	1,958	20,602
Angammedilla	1,536	0	1,536
Galwaysland	1,521	82	1,603
Wilpattu	29,689	5,417	35,106
Maduruoya	716	21	737
Lahugala	314	110	424
Pigeon Island	36,646	8,437	45,083

Hikkaduwa	40,506	7,050	47,556
ETH	106,176	9,527	115,703
TOTAL	779,711	254,052	1,033,763

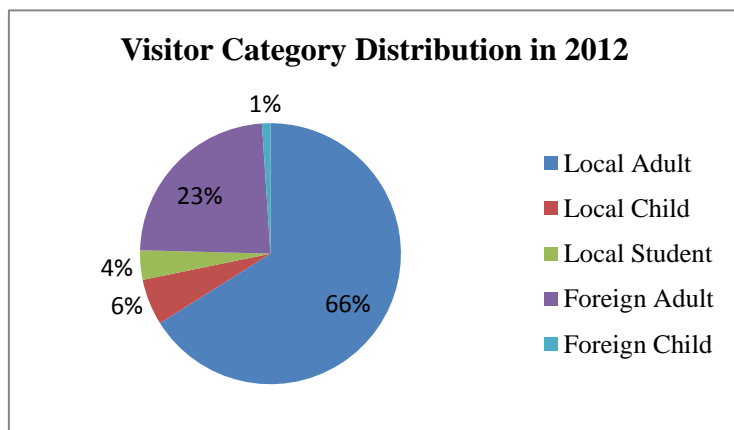


Figure 6.2: Visitor Category Distribution - 2012

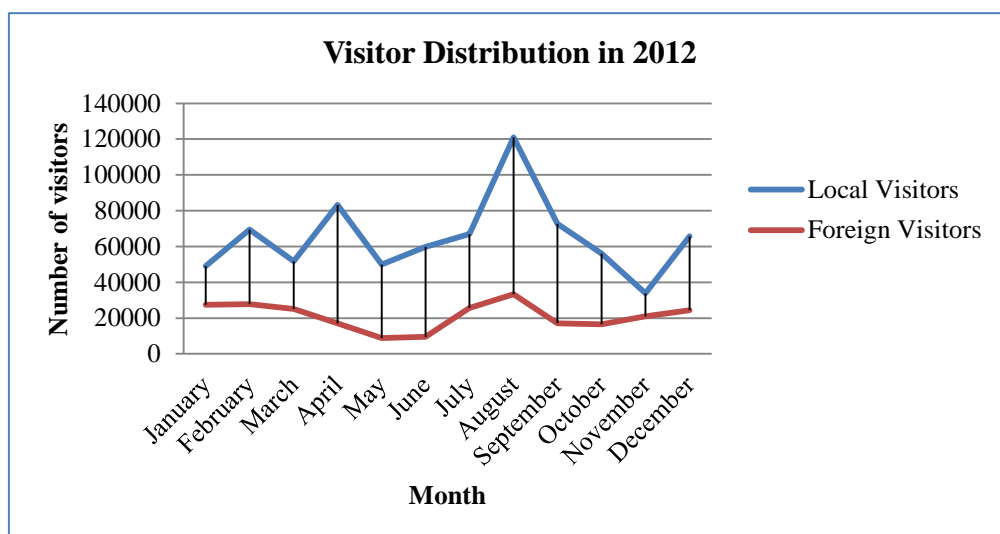


Figure 6.3: Annual Visitor Distribution- 2012

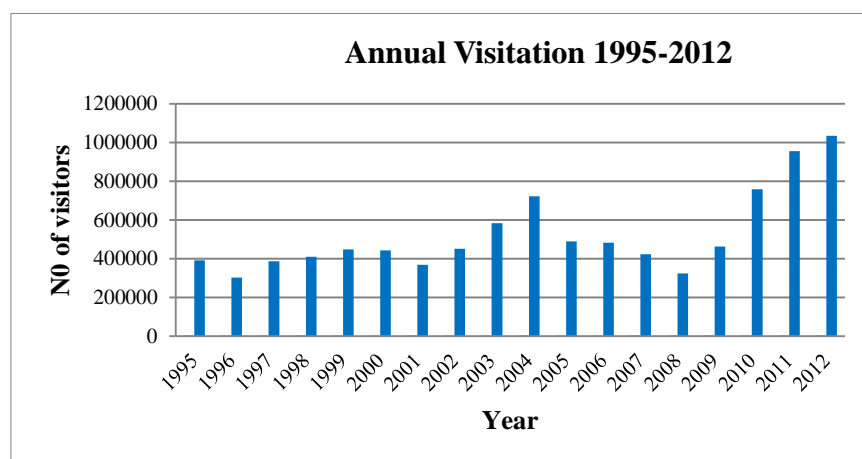


Figure 6.4: Annual Visitation 1995-2012

6.1.1.2. Volunteer Guides

DWC mobilize the educated youths residing in the fringing villagers of wildlife protected areas as volunteer guides in national parks. These volunteer guides are deployed in interpretation activities at the national parks. Following table shows the number of volunteer guides mobilized for visitor services from 2008 to 2012.

Table 6.3: Number of volunteer Guides 2008-2012

Year	Number of Volunteer Guides
2007	197
2008	189
2009	266
2010	255
2011	287
2012	323

Table 6.4: Progress of Ecotourism Activities - 2012

S.No.	Activity	Physical Progress	Financial Progress Rs. ('000)
1	Construction of 2 camp sites in Kaudulla NP-Dora DekaEla and Sudu Gala	01 Campsite was completed	270
2	Establishment of dust bins in Thangamale Sanctuary	100% Completed	107
3	Rehabilitation of Information and Research Center in Ritigala SNR	Completed color washing and construction of ticketing counter ongoing	785
4	Construction of information center and Ticketing counter in Ussangoda NP	Project postponed to obtain the approval of the Dept of Archeology.	
5	Rehabilitation of Ekgaloya Wildlife bungalow	100% Completed	1,394

6	Construction of Boat yard in Senanayaka Samudrareservoir in Galoya NP	Completed	96
7	Construction of Viewing deck in KumanaVillu, Kumana NP	70% completed	280
8	Conversion of bund house building into a wildlife bungalow	Completed	755
9	Rehabilitation of Kosspola Camp site in Galoya NP	100% Completed	277
10	Construction of 02 Camp sites in Lunugamwehera NP	100% completed	435
11	Covering auditorium of Bundala NP with wire net	Not completed	
12	Interpretation materials	Printing of entrance tickets(1350) in Hikkaduwa NP, Kumana NP	226
13	Tree planting programme and establishment of Solar power system in Butawa Wildlife bungalow in Yala NP	Completed	40
14	Application charges of Department of Coastal Conservation to construction of proposed Hikkaduwa visitor center and Office complex	Completed	2
15	Opening ceremony for Ravi Samarasinghe Memorial center at Yala NP	Completed	53
16	Opening ceremony for Solar Power system in Old Butawa in Yala NP, and tree planting programme in Udawalawa NP	Completed	24
17	Field visitation of Minister in Somawathiya, Yala and Angammedilla NP	Completed	53
18	Circuit bungalow survey	71% Completed	17
19	Improvement of capacity buildings of Volunteer guides Wilpattuwa, Yala NPs	2 programmes were Completed	129
20	Preparation of 2 plaques for Wilachchiya and Thanthirimale entrance in Wilpattu NP	Completed	144
21	Meeting with chairmen of Bours& Company Limited on construction of Wilpattu NP		8

22	Renovation of furniture's in Wasgamuwa wildlife bungalows	Completed	31
23	Renovation of toilets in Manawila Wildlife bungalows	Completed	5
24	Renovation of Thibiriyamankada Wildlife bungalow, Udawalawa NP	on going (30% completed)	215
25	Renovation of water supply system in Ederaetamulla Wildlife bungalow, Maduruoya NP	Deep well kit was purchased	17
26	Renovation of Old Buthawa and Onduchchi Wildlife bungalow, Yala NP	Cleaning the CB by Voluntary	141
27	Preparation of interpretation materials in Turtle Conservation Project in Kumana NP	Funds was released	105
28	Preparation of glass covers for interpretation materials in Minneriya NP	100% completed	16
29	Ritigala ETH Opening	01 plaque was prepared	91
30	Rehabilitation of visitor center and welfare canteen in Kumana NP	100% completed	280
31	Awarenessprogrammes	01 Media workshop (Volunteer staff)	117
32	Rehabilitation of solar system in Maniksorowwa CB in Kaudulla NP	Completed	27
	Sub Total		6,247

6.2. Community Outreach Unit

6.2.1 Performance in Detail

Activities in relation to the mandate of the division were carried out during the year to obtain proactive involvement of communities in the conservation process, through community empowerment. Table 6.6 illustrates the data and information in relation to those programmes.

Special Projects & Programmes implemented by Community Outreach Division - 2012

In 2012 following work programmes were conducted with the assistance of HSBC

Clean-up Project in Horton Plains National Park

HSBC funded clean-up project commenced as the first ever private sector assisted project of DWC in 1999, & initially it commenced at Horton Plains National Park. The main objective of

the project when it was commenced in 1999 was to preserve the beauty of Horton Plains by establishing an effective garbage disposal mechanism in order to reduce sambur deaths due to polythene indigestion.

In order to maintain the Horton Plains ecosystem free from garbage & polythene, cleanup project was extended to 2012 as well.

Under the cleanup project, 6 labourers were employed from the nearby Dayagama Estate, to engage in cleaning work of the park. Their salaries were paid under the project during the entire year.

As there is a marked increase in the tourist arrivals to the park, 2 interpreters were employed for nearly 8 years continuously to educate the public at the visitor center. Their salaries were paid under the project this year as well.

In order to transport garbage out of the National Park, & for supervision work of the cleanup project activities, fuel allowance was paid to the Park Warden for the use of the hand tractor & the motorbike (which were donated by HSBC).

Under the project, educational panels have been installed along the pathway of World's End – Baker's Falls loop road, and damaged panels due to vandalism have been replaced during the current year.

Re-forestation Project at the Buffer-zone of Horton Plains

Watershed Re-forestation Project commenced in 2012 with HSBC assistance. The objective of the project is to re-forest the degraded watershed areas in the buffer-zone of the Horton Plains National Park. This project is designed as a collaborative project with a local Environment Conservation Organization namely Friends of Horton Plains which includes the members of the Tea Research Institute & Estate Managers of surrounding Tea Estates of Horton Plains.

Degraded watershed area of approximately 1.5ha at Summerset Tea Estate was initially selected for the pilot testing of the project, and 1500 Nos. Indigenous fruit & forest plant species were planted in December 2012 with the onset of rain.

Weeding, replacement of dead plants & monitoring of plant growth etc. are being done continuously.

Outreach program for school teachers & students of Summerset Tamil MahaVidyalaya was also held prior to the reforestation project with the participation of Assistant Director (Central Region) and Park Warden (Horton Plains).

Clean-up Project in Peak Wilderness Nature Reserve:

Similar to Horton Plains, HSBC sponsored clean-up project at Peak Wilderness commenced in 2007 & continued in 2012 as well.

Under the cleanup project, total number of 4 labourers was employed (2 labourers at Palabaddala side & 2 labourers at Nallathanniya side) for the collection of garbage (especially polythene & plastic). Their salaries were paid by the project throughout the year.

In order to transport garbage out of the reserve, monthly fuel allowance was paid to the park warden.

It is a known fact that there are no permanent garbage bins installed along the pilgrim routes, and therefore polythene and garbage are seen scattered all over. This has resulted in many difficulties in the collection process, and it also poses a threat to the wildlife.

Therefore HSBC assistance was obtained to construct permanent garbage bins initially along the Nallathanniya pilgrim route. The same design was used as at Horton Plains, and the technical estimates were done. The construction of 15 garbage bins at Nallathanniya Route commenced in the latter part of 2012 & the work to be completed in early 2013.

HSBC Staff Engagement Program – Peak Wilderness

As per the request made by HSBC, awareness creation & staff engagement program was conducted at Sri Palabaddala, Peak Wilderness on the 12.10.2012.

Fifty (50) staff members including senior management staff of HSBC participated in this event. Presentation on Peak Wilderness was done by the Park Warden, highlighting the importance of Peak Wilderness Nature Reserve as a biodiversity hot spot, which was recently declared as a World Heritage Site.

Cleaning the walkway along the Palabaddala route was done by HSBC staff as a part of the programme.

Table 6.5: Progress of Community Outreach Activities - 2012

SN	Activity	Physical Progress	Financial Progress Rs('000)
	2001-3:Eco-development in and out Protected Areas		
1	Continuation of CBO Activities (Maintenance of Live Fence) in Wasgamuwa NP	100% completed	125
2	Fruit cultivation Project in Wasgamuwa NP	1295 plants were distributed within 50 families	159
3	Continuation of CBO Activities (Maintenance of Live Fence) in Minneriya NP	100% Completed	98
4	Continuation of CBO Activities (Maintenance of Live Fence) in Minneriya NP	100% Completed	87
5	Continuation of CBO Activities (Awareness Programme 3) in Kaudulla NP	3 Prog. Was completed	90
6	Continuation of CBO Activities (Live Fence) in Peak Wilderness	100% Completed	97
7	Sramadana Campaign in Peak Wilderness	100 %Completed	180
8	Construction of Live Fence in Angammedilla NP	100 %Completed	145

9	Fruit cultivation Project (Phase I) in Kumana NP	1150 plants were distributed within 755 families	141
10	Continuation of CBO Activities (Mangrove plantation project) in Kumana NP	1500 pants were on ground	95
11	Continuation of CBO Activities (Mangrove plantation Project) in Kumana NP	1501 pants were on ground	96
12	Continuation of CBO Activities (Sharmadana Campaign) in Udawalawa NP	02 prog. was completed	100
13	Continuation of CBO Activities (Sharmadana Campaign) in Bundala NP	100% completed (coastal belt)	50
14	Saviya Exhibition in Bundala NP	Completed	20
15	Sramadana Campaign with HSBC members in Peak Wilderness	Completed	75
16	Awareness programme CBO members	Completed	31
17	Social Mobilization programmes for Buffer Zone Community	Completed	51
18	Salary for casual Labours in Wasgamuwa NP	Completed	10
	Sub Total		1,650

Chapter 7

WILDLIFE HEALTH MANAGEMENT DIVISION

7.1. Main Activities and Responsibilities

- Health monitoring and disease investigation activities of wild animals.
- Providing effective and rapid response Veterinary care for wild animals.
- Conducting post mortems of wild animals.
- Monitoring and enhancing the welfare of wild animals.
- Management of wild animal-human conflicts.
- Management of animal rehabilitation centers.
- Management of Elephant Transit Home (ETH).

7.2. Performance in 2011

Treatments to wild animals

Veterinary surgeries attached to DWC were engaged in treating injured wild animals. Treatments to injured wild elephants are a priority at the present context of wildlife conservation and Table 7.1 illustrates the statistics of treatments carried out in 2012.

Table 7.1: Animal Treatments - 2012

Regions	Number of Elephants	Number of Other Animals
Central	08	50
Eastern	24	220
Mahaweli	36	24
North Western	84	24
Southern	36	120
Western	-	-
Total	188	438

• Post-mortem Examinations & Treatments

Veterinary surgeries attached to DWC were engaged in carrying out post mortem examinations of wild elephants & other animals (Table 7.2). These post mortem examinations are very important in detecting disease out breaks and health condition

Table 7.2:Post-mortem Examinations - 2012

Regions	No. of Post-mortem Examinations
Central	05
Eastern	24
Mahaweli	22
North Western	48
Southern	18
Western	09
Total	126

- **Management of Wild Elephants**

Wildlife health Management division is the focal point of execution of the capture, translocation and collaring of the marauding wild elephants. These activities are highly important for Human Elephant Conflict management.

- 8 Rehabilitated elephants from Elephant Transits Home at Udawalawa were released to Udawalawa National Park and Maduruoya National Park.
- Contribution of the division in implementing Annual action plan is shown in the Table 7.3.

Table 7.3: Progress of Action Plan Activities - 2012

SN	Activity	Physical Progress	FinancialProgress Rs('000)
	2001-4:Conservation of Endangered Species		
1	Turtle conservation Kumana NP	100% Completed (01 building and development of nesting site)	244
2	Turtle conservation Hikkaduwa NP	Completed(development of nesting site and 48 feet of length fence)	98
3	Rehabilitation of barbed wire fence around the ETH,Udawalawa	600m length fence was completed	301
4	Construction of 4 guard rooms around the ETH	1 guard was completed	221
5	Miscellaneous		561

6	Relocation of dears in Athurugiriya	Purchased PVC coated chain Link mesh and 20 Nos. Iron pipes, Preparation of 11 Nos. (54"*42"*20") cages for dear transport	801
7	Purchas of instruments for trapping Crocodiles	Continuous	9
8	Preparation of temporary Animal holding cages	Purchased PVC coated chain Link mesh and 03 Nos	62
9	Transportation of injured Animals	Relocated of 01Nos. of monkey	7
10	Release of baby elephant	13 baby elephants were released	490
Total			2,794

Chapter 8

ENGINEERING DIVISION

8.1. Main Activities and Responsibilities

- Implementation of construction and infrastructure development plans within PA's
- Construction and maintenance of buildings outside PA's
- Construction and maintenance of PA's road network.

8.2 Construction and Repairing of Field Buildings

- **Repairing of Buildings**

Repairing of field buildings were carried out as illustrated given in the Table 8.1.

Table 8.1:Repairing of Field Buildings - 2012

SN	Activity	Physical Progress	Financial Progress Rs.('000)
	2001-8 Building and Structures		
1	Rehabilitation of visitor toilet block in Minneriya main entrance	100% completed	124
2	Rehabilitation of chain link fence in Polonnaruwa AD office	100% completed	865
3	Establish water line system in Maduruoya main entrance	100% completed	198
4	Rehabilitation of Pibidunugama beat office - Herathgama	Tendering	421
5	Repair kitchen and stores racks in AD office - Anuradhapura	100% Completed	252
6	Establishment of water supply system with overhead water tank and pump and repair of park warden office, ticketing counter in Hunuwilagama main office.	100% Completed	3,178
7	Establishment of water supply system for Herathgama ranger's office & quarters	100% Completed	421
8	Stage 1 - Major repairs including floor tiling and ceiling in Auditorium.	100% Completed	2,154
9	Rehabilitation of Range office & construction of toilets-Hambanthota	100% Completed	968
10	Rehabilitation of Weheramankada beat office	100% Completed	233
11	Rehabilitation of combined quarters in Lunugamwehera	100% Completed	698
12	Rehabilitation of combined quarters in AD office - Kataragama	87% completed	519

	- Kataragama		
13	Earth filling around AD office at Katharagama	49% completed (not completed as scheduled)	49
14	Rehabilitation of Katagamuwa entrance office & road barrier	100% completed	85
15	Rehabilitation of combined quarters at Nimalawa - Yala	68% completed	477
16	Rehabilitation of roof in combined quarters - Bundala NP	100% Completed	10
17	Rehabilitation of ranger office at Weerawila	100% Completed	797
18	Converting the existing auditorium Building to laboratory-Bundala NP	100% Completed	346
19	Rehabilitation of kitchen at Nallathanniya	90% completed (Works is delay due to rain)	445
20	Rehabilitation of roofs of 3 buildings at Minipe	100% completed	684
21	Rehabilitation of ranger office at Thangamale& water supply	100% Completed	382
22	Rehabilitation of ranger office at Seethaeliya	100% Completed	326
23	Rehabilitation of fence at SamanalaAdawiya	100% Completed	730
24	Rehabilitation of staff quarters at Maimbulkanda	100% Completed	423
25	Rehabilitation of fence around Horagolla NP	900 m length was Completed	230
26	Repairing of park office & museum, pipe line & pump and ranger quarters -Maduruoya NP. - Extra work	Completed	41
27	Repairing of Mihintale circuit bungalow with the Fence & Gate - Extra work	Completed	21
28	Repairing of Thibiriyamankada circuit bungalow – Udawalawa NP - Extra work	Completed	0
29	Guard room and garage for training center - Girithale - Extra work	Completed	77
	Miscellaneous		
30	Repairing of toilet and water supply system for AD quarters Anuradapura	Completed	48
31	TEC Payments		92
32	Construction of water tank-Yala NP - Balance work	Completed	1,054
33	CDM Telephone connection to AD (Mahaweli)		6
34	Repairing old Buthawa CB & Solar Unit room	Completed	97
35	Tube well for ranger office, quarters, & minor staff quarters at Madu Road	on going (Work is delay due to rain)	320

36	Tube well for Mollikulama Building at Wilpattuwa NP	on going (Work is delay due to rain)	313
37	Tender allowances		200
38	Tube well for entrance building at Maduruoya NP	Completed	464
39	Repairing building near Kabaliththa Temple	60% Completed	259
40	Commitment: Repairing Combined quarters in Wasgamuwa NP	38% Completed	415
41	Establishment of Road barrier in Kumana NP	100% Completed	34
42	Repairing roof of Hikkaduwa Office	100% Completed	12
43	Rehabilitation of roof in Udmalla beat office in Bundala NP	100% Completed	10
44	Construction of electric fence around Aliyamalagala Communication Tour	100% Completed	58
	Sub Total		18,536

- **Construction of New Buildings**

Construction of new buildings carried out during the year is given in the Table 8.2. Fund allocations from consolidated fund were utilized for these constructions.

Table 8.2: Construction of New Buildings - 2012

SN	Activity	Physical Progress	Financial Progress Rs('000)
	2104 :Building and Structures		
72	Construction of Water Tank – Yala NP - Balance work	Completed	40
73	Construction of Head Office building - Balance work	Completed	6,004
74	Miscellaneous	payment for advertisement	69
75	Partition of HO building - Balance work	Completed partition of staff rest room for Audit division	253
76	Construction of Eluwankulama - Kalaoya staff quarters at Wilpattuwa NP	Completed	41
	Sub Total		6,407

- **Construction and Rehabilitation of Water Bodies**

At present existing tanks and water ponds are not sufficient to fulfill water requirement of the animals during dry seasons. Therefore, it is necessary to maintain an adequate water supply for wild animals within the wildlife reserves DWC has taken steps to construct new water ponds and renovate and repair existing tanks and water ponds to enhance water supply for animals throughout the year (Table 8.3).

Table 8.3: Rehabilitation and Construction of Water Bodies - 2012

SN	Activity	Physical Progress	Financial Progress Rs('000)
	2001-7 :Rehabilitation of Water Bodies		
1	Improvement of Horagolla tank	45% completed	317
2	Turfing of Kithulewawa tank bund in Kahallapallekale	100% Completed	78
3	Rehabilitation of Andaragollawa tank at Wilpattu - Balance work	100% Completed	1,114
4	Rehabilitation of Panyaya tank at Ritigala	20% completed	100
5	Rehabilitation of tank close to Handagiriya entrance	95% Completed	2,458
6	Purchased of a Water meter to supply water from Manik Gaga in Yala NP	Completed	26
7	Miscellaneous		481
8	Payment of soil testing report for Mahaweli Authority		22
	Sub Total		4,596

8.3 Development of Road Network

As wildlife reserves in the country have expanded progressively during the past few years, necessary infrastructure facilities need to be developed for both to enhance protection and to enhance visitor facilities. Development of road network in PA system plays a significant role in this regard.

Rehabilitation of roads was completed in Yala, Udawalawa, Horton Plains, Kumana, Wasgamuwa and Minneriya National Parks. Table 8.4 provides the details of road development activities carried out in 2012.

Table 8.4: Rehabilitation of PA Road Network - 2012

SN	Activity	Physical Progress	Financial Progress Rs('000)
	2001-6 :Rehabilitation of Road Network		
1	Stage 1 - Rehabilitation of Kandeganwila - Gurukumbura road in Maduruoya NP -(Structures&motergrading without graveling)	80% completed	3,111
2	Rehabilitation of Kumana road	Completed	70
3	Rehabilitation of Yala roads	• 22Km of length was moter graded (Yala,Uraniya-Buthawajunction, Warahana-Katagamuwa, Thalgasmankada-Warahana, ButhawaAniket-Akasachaihiya, AkasaChaihiya-Gonalhaba)	1,728
4	Rehabilitation of road to Pokunuthanna circuit bungalow at Udawalawa	Ongoing (90%)	1,405
5	Rehabilitation of road to Gonawiddagala circuit bungalow at Udawalawa	on going 01 causeway completed (90% completed)	749
6	Rehabilitation of road at Wasgamuwa - Commitment	Completed	98
	Miscellaneous - Rehabilitated Kumana road	Completed 1 causeway	760
	Sub Total		7,921
	2105-02: Establishment of Road Network (New) in Protected Areas		
78	Construction of Kirigalbe road in Kumana NP	100% Completed	956
79	Construction of road in Horton Plains	Tendering Stage	
80	Construction and rehabilitation of road network in Wilpattu NP	100% completed	1,000
81	Access road development to Mahakandarawa Circuit Bungalow	80% completed	187
82	Construction of Kirioya road at Wasgamuwa NP- (Extra work & LD - 2001)	on going	1,284
Sub Total			3,427
Grand Total			11,348

8.4. DeyataKirula National Development Project

Table 8.5 :DeyataKirula Activities

SN	Activity	Physical Progress	Financial Progress Rs ('000)
1	Commitment: Construction of Eluwankulama – Kalaoya entrance at Wilpattuwa NP	Completed	361
2	Commitment: Construction of Eluwankulama – Kalaoya staff quarters at Wilpattuwa NP	Completed	41
SN	Activity	Physical Progress	Financial Progress Rs ('000)

3	Commitment: Construction of Eluwankulama – Kalaoya ranger quarters at Wilpattuwa NP	Completed	150
4	Commitment: Construction of Mollikulama ranger quarters at Wilpattuwa NP	Completed	1,173
5	Commitment: Construction of Mollikulama ranger office at Wilpattuwa NP	Completed	426
6	Commitment: Construction of Mollikulama combined quarters Wilpattuwa NP	Completed	587
7	Commitment: Construction of Marawila beat office at Wilpattuwa NP	25% Completed and it was retender	
8	Constructions of Buildings at Thanthirimale Entrance with extra work	Completed	3,735
9	Constructions of Buildings at Mahawilachchiya Entrance with extra work	Completed with supply electricity	5,870
10	Constructions of Hunuwilagama Canteen & Sales Center with extra work	30% Completed	
11	Rehabilitation of Nalanda Tank in Wilpattu NP	90% Completed	1,434
12	Rehabilitation of Hatamuna Tank in Wilpattu NP	Completed	473
13	Rehabilitation of Dematamalwawe Tank in Wilpattu NP	Completed	1,547
14	Rehabilitation of Higgodawawe Tank in Wilpattu NP	Completed	654
15	Rehabilitation of Boogaswawe Tank in Wilpattu NP	Completed	1,253
16	Rehabilitation of Handapangodawawe Tank in Wilpattu NP	Completed	1,848
17	Rehabilitation of Weerawilawawe Tank in Wilpattu NP	on going	
18	Construction of new roads at Thanthirimale Entrance - 100 km	95% Completed	5,990
19	Construction of 06 camp site in Wilpattu NP	01 Camp site was completed	346
20	Construction & Rehabilitation of road at Wilpattuwa NP	On going	793
21	Supply electricity for Wilachchiya entrance office	Completed	417
22	Newspaper Advertisements		6,343
	Total		33,441

Chapter 9

ADMINISTRATION DIVISION

9.1. Main Activities and Responsibilities

- Preparation of Human Resource and General Administration Plans.
- Recruitment of employees for DWC.
- Transfers: annual, on disciplinary grounds and exigencies.
- Service extensions, Retirement, Pensions and W&OP matters.
- Disciplinary matters.
- Payment of compensations.
- Performance appraisal and Increments.
- Construction and repairing of field buildings.

9.2. New Recruitment

Cadre vacancies were filled with recently qualified personnel as per the following table.

Table 9.1: Recruitment - 2012

Designation	Number of Recruitment
Wildlife Range Officer - Grade III	33
Assistant Bungalow Keeper	08
Driver	16

9.3. Promotions

Following promotions were granted during 2012.

Table 9.2: Promotions - 2012

Designations	Number of officers
Wildlife Guard	38
Wildlife Range Assistant	105
Wildlife Range Officer - Grade III	28
Wildlife Range Officer - Grade II	10
Officers of Sri Lanka Scientific Service Gr 11/ Class 11 were promoted to Gr11/Class1 and they were promoted to Deputy Directors	05

Mr. H.D. Ratnayake, a class 1 officer of Sri Lanka Scientific Service was appointed as the Director General of Wildlife Conservation Department.

9.4. Efficiency Bar Examinations

Following examinations were held and results were released.

Table 9.3: Efficiency Bar Examinations

Examination	Number of Candidates
E.B. for Wildlife Guard	114
E.B. for Range Assistant	58
E.B. for Wildlife Range Officer - Grade III	28
E.B. for Wildlife Range Office - Grade II	14
E.B. for Technical Assistant	02
E.B. for Deputy Director (Research & Training)	01
E.B. for Information & Communication Technician	02
E.B. for Visitor Service Officer	01

9.5. Loan

Following loans were released.

Table 9.4: Loan Facilities - 2012

Loan Category	Number of Recipients
Emergency loan	371
Push bicycle loan	27
Loan for loan	13
Property loan	12

9.6. Investigations & Disciplinary Inquiries

Three disciplinary inquiries were completed in 2012 and recommendations were forwarded for DG's consideration.

9.7. Paying of Agrahara Allowances

Agrahara Allowances were paid as follows

Table 9.5: Agrahara Fund Paying of Allowances

Category of Agrahara Allowance	Number of Recipients
Hospitalized	60
Spectacles	62
Child Birth	11

Arduous and risk allowance paid was increased from Rs.500 to Rs.2500.

Chapter 10

FINANCE DIVISION

The Finance division of the Department of Wildlife Conservation coordinates all financial activities applicable to the DWC. The division coordinated the institutions of the Ministry of Finance such as Department of Public Finance, Department of State Accounts, Department of National Budget, Department of Fiscal Policy and Revenue, Department of Treasury Operations.

10.1. Main Activities and Responsibilities

- Planning, implementing, controlling and accounting of annual revenue and expenditure budget of the department.
- Financial control over imprested receipts from treasury and various institutions.
- Classification and submission of financial information to the general treasury, the ministry of environment and natural resources and to the other divisions of the department.
- Submission of annual accounts, appropriation account, revenue account, public officers' advance account and the wildlife preservation fund account administrated by the DWC.

10.2 Purchasing of Furniture and Office Equipment

- New Furniture and office equipment were purchased for new head office building, regional wildlife offices & wildlife bungalows.

Table 10.1: Expenditure for Furniture and Office Equipment- 2012

S.N.	Activity	Physical Progress	Financial Progress (Rs. '000)
1	De Freezer	01 De freezer was purchased	49
2	Photocopier	05 Photocopiers were purchased	1,034
3	Note Book Computer	01 Note Book Computer was purchased	110
4	Purchase of computers	14 Computers were purchased	965
5	Printer	07 Printers were purchased	203
6	UPS	16 UPS were purchased	87

7	Fax Machine	01 Fax machine was purchased	17
8	Office Table (Wooden)	8 tables were purchased	139
9	Office Chair (wooden)	54 chairs were purchased	196
10	Plastic Chair	40 chairs were purchased	33
11	Computer Table	4 computer tables was purchased	20
12	Computer Chair	8 computer chairs were purchased	34
13	Visitor Chair		
14	Cash Safe Iron	01were purchased	31
15	Steel Almery	6 Almery was purchased	66
16	Steel Cabinet (4 Drawer)	Completed	71
17	Executive Table	2 were Completed	136
18	Executive Chair	3 nos were purchased	26
19	Map Drawer	05 map drawer were purchased	190
	Circuit Bungalow Furniture		
20	Purchased furniture for Ederaetamulla wildlife bungalow in Maduruoya NP	02 Double bed , 2 Baggage Rack, 01 Dining table, 12 Dining chairs, 10 Single bed, 04 Towel rack, 01 Round Stool were Completed	359
21	Purchased of Electric kettle	01 were purchased	5
22	Miscellaneous	01 cartage and 04 heavyduty staplers, 01 pedestals fan, 01 Extension code, 12 Multi Socket, 03 Air conditioner, 02 CDMA telephone, 01 8GB pen drive, 06 Gas Cooker were purchased	203
Total			3,974

- In addition various machinery and equipment were purchased (Rs. 808,000.00) for head office and wildlife regional offices in support of implementing for effective conservation activities.

Table 10.2: Expenditure for Plant Machinery and Equipments- 2012

S.N.	Activity	Physical Progress	Financial Progress (Rs. '000)
1	Replacement of Laptop mother board	Completed	33
2	Purchasing of 01 boat for Galoya NP	01 boat was purchased	522
3	Purchasing of 04 standard bicycles for Pigeon Island NP and Panama Range office	Completed	41
4	AC Unit	3 unit were fixed	212
5	Rehabilitation of Plant Machinery & Equipment	Diesel Motor was purchased	425
Total			1,233

10.3. Wildlife Preservation Fund (WPF)

WPF was created in 1967 with the mandate of supporting wildlife conservation in Sri Lanka. Objectives of WPF, as gazette, are as follows.

1. To enhance the corporation of public on protecting & conserving wild animals.
2. Maintenance of protected areas declared for wildlife conservation.
3. Payments of rewards to the wildlife officers & public appreciation for their admirable contribution to wildlife conservation.
4. Payment of rewards to informants against wildlife crimes.

Table 10.3 shows that the total annual contribution of WPF for wildlife management as per mandate. Table 10.5 illustrates the detailed accounts of WPF for the year 2012.

Table 10.3: Expenditure of Wildlife Preservation Fund 2005 to 2011

Year	Estimated Expenditure (Rs. Mn)	Actual Expenditure (Rs. Mn)	% Expenditure
2005	56	53	95%
2006	58	57	98%
2007	75	56	75%

2008	112	81	72%
2009	134	99	74%
2010	161	121	75%
2011	242	206	85%
2012	510	406	80%

10.4. Budget Details

Budget details of the Department in relation to the year 2011 are as follows

Head – 284. Department of Wildlife Conservation

Programme: 01 Operational Activity

Project: 01 – Administration and Establishment Services

Following details indicates the performance of the department in relation to expenditure

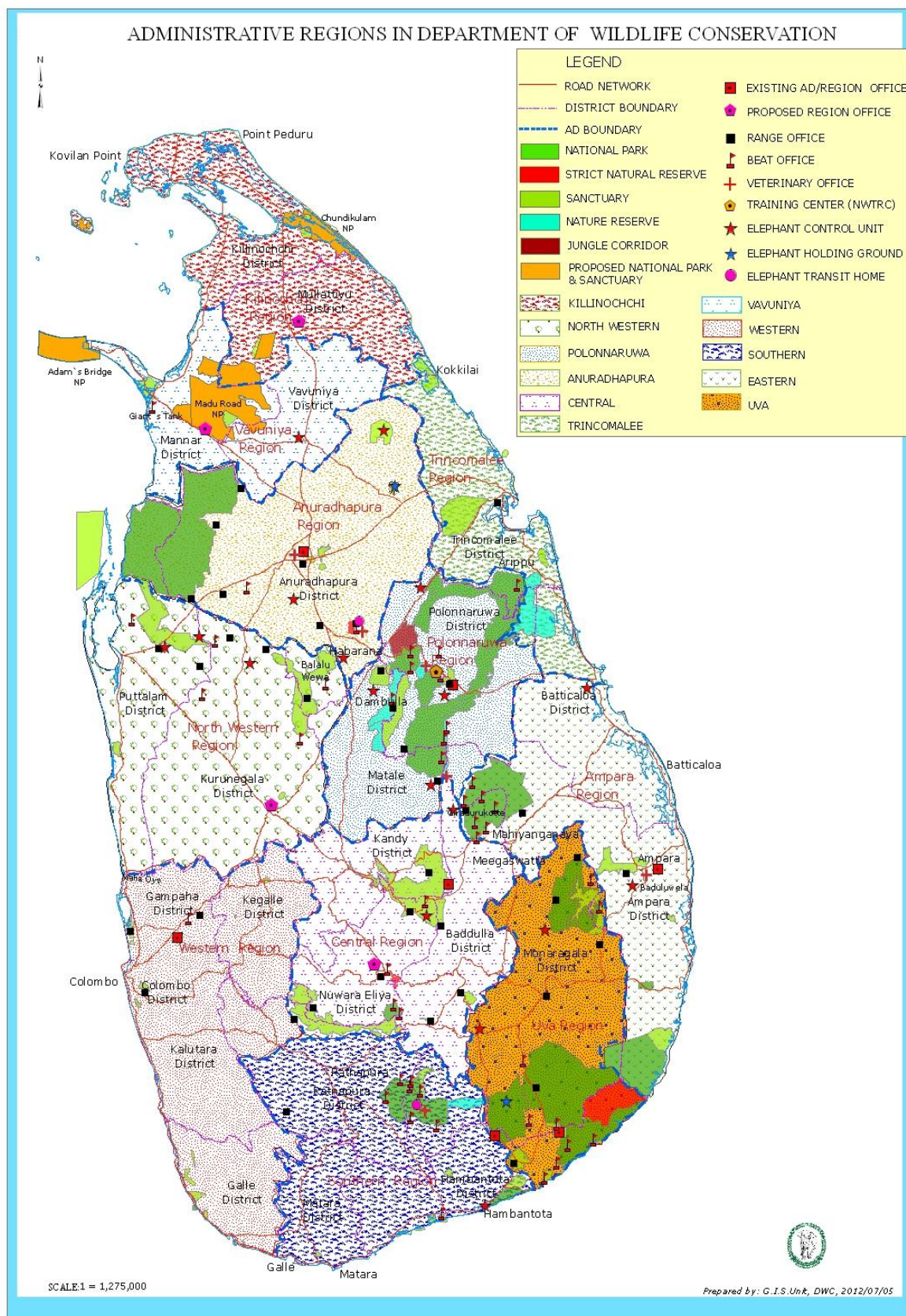
Table 10.4: Budget Details of the Department - 2012

Object Code	Description	Estimate (Rs. "000")	Expenditure (Rs. "000")	Financial progress as %
Rehabilitation and Improvement of Capital Assets				
284-01-01-01-2001	Building and Structures			
2001-1	Establishment of Protected Area Network	7,500	7,500	100%
2001-2	Ecotourism Management	11,000	6,247	57%
2001-3	Eco-development in and out Protected Areas	1,680	1,650	98%
2001-4	Conservation of Endangered Species	3,500	2,825	81%
2001-5	Information and Communication System	2,000	1,427	71%
2001-6	Rehabilitation of Road Network	11,000	7,921	72%
2001-7	Rehabilitation of Water Bodies	11,000	4,596	42%
2001-8	Rehabilitation of Buildings and Structures	23,000	18,536	81%
284-01-01-01-2002	Plant, Machinery and Equipment	2,500	425	17%
284-01-01-01-2003	Vehicles	7,000	6,750	96%
Acquisition of Capital Assets				
284-01-01-01-2102	Furniture and Office Equipment	4,000	3,974	99%
284-01-01-01-2103	Plant, Machinery and Equipment	850	808	95%
284-01-01-01-2104	Building and Structures	6,453	6,407	99%
284-01-01-01-2105	Land and Land Improvement			
2105-1	Habitat Enrichment for Wildlife	7,500	4,767	64%
2105-2	Establishment of Road Network in PAs	3,500	3,427	98%
284-01-01-01-2401	Training and Capacity Building			
2401-1	Training and Research	2,000	1,899	95%
2401-2	Conservation Education Extension and Interpretation	3,755	3,190	85%
2401-3	Protection and Law Enforcement	6,000	6,087	101%
2401-4	National Wildlife Training & Research Centre Girithale	8,000	6,504	81%
284-01-01-02-2104	Conservation of Elephant – ‘Gajamithuro’	200,000	175,066	88%
284-01-01-05-2104	Establishment of Wild Elephant Conservation Park Lunugamwehera and Horowpathana	200,000	22,000	11%
284-01-01-06-2502	Dayatakirula Development Programme (Development of Wilpattu NP)	126,000	67,126	53%
Grand Total (Rs. '000)		648,239	359,132	55%

Table 10.5: Wildlife Conservation Fund Balance as on 2011.12.31

Description	2012	(Rs.)
Balance on as 2012.01.01		792,586,391.61
Receipt		
Park entry free	467,988,101.40	
Entry fee ETH	5,6711,157.69	
Service charges	90,231,239.05	
Vehicles entry charges	34,091835.09	
Poster parent scheme	4,852,551.97	
Fines imposed by courts	26,657,983.00	
Donations	635,439.96	
Filming charges in National Parks	8,372,877.38	
Books, Magazine and Periodicals	493,574.45	
Import & Export Permits for parts of Animal & Plant	491,800.00	
Linen charges at circuit bungalows	2,203,887.69	
Campsite occupation frees	3,710,559.22	
Registration of domestic elephants	64,800.00	
Fishery permits	49,250.00	
Timber & Fuel wood sales	-	
Sands sales	43,165,325.00	
Registration of tasks	4,000.00	
Interest on Invest	40,726,183.52	
		729,410,565.42
		1,521,996,957.03
Payment		
Stationery	265,051.00	
Maintenance of buildings & machinery	2,203,079.30	
Service charges	65,869,519.86	
Compensation of deaths and injuries of wildlife officers	125,000.00	

for volunteer guides Allowance	43,429,875.00	
Animal foods	26,584,213.92	
Compensation to damages by Wild Animals	15,899,702.00	
Fuel	10,461,842.78	
Radio Communication Network Frequency Charge	3,528,196.10	
Incentives	4,077,104.36	
Elephant drives	6,026,147.56	
Medical supplies	11,333,174.11	
Traveling claims	13,480,587.04	
Payment of electricity & water supply bills	3,474,548.01	
Gun license	216,600.00	
Conservation of endangers species	532,764.00	
Building & maintenance of electrical fence	380,629.00	
Burnt of elephant carves	687,520.00	
Legal charges	226,500.00	
Laundry charges	362,249.00	
Repairing of vehicles	8,372,778.99	
Salary for casual labours	5,790,700.36	
Purchasing of thunder & serpent flare	43,526,689.00	
Purchasing Vehicles	27,799,351.84	
Treasury Bills (Interest on invest)	40,726,183.52	
Other expenditures	16,160,691.37	
Improving Facilities of National Parks, Wildlife & Visitors	54,931,010.24	406,471,708.36
Balance as on 31-12-2012		1,115,525,248.67



Wildlife Protected Areas in Sri Lanka

S/N	Strict Natural Reserve	Area (ha)	Date of Declaration
1	Hakgala	1,142	1938.02.25
2	Yala	28,905	1938.03.01
3	Ritigala	1,528	1941.11.07
	Sub Total	31,575	

S/N	National Park	Area (ha)	Date of Declaration
4	Ruhuna (Yala) N.P.	97,881	1938.02.25
5	Wilpattu	131,667	1938.02.25
6	Galoya	25,900	1954.02.12
7	Udawalawa	30,821	1972.06.30
8	MaduruOya	58,850	1983.11.09
9	Wasgamuwa	37,063	1984.08.07
10	Floodplains	17,350	1984.08.08
11	Somawathiya	37,646	1986.09.02
12	Horton plains	3,160	1988.03.16
13	Bundala	6,216	1993.01.04
14	Lunugamwehera	23,499	1995.12.08
15	Minneriya	8,889	1997.08.12
16	Kaudulla	6,900	2002.04.01
17	Hikkaduwa	102	2002.10.08
18	Pigeon Island	471	2003.06.04
19	Horagolla	13	2004.07.28
20	Angammedilla	7,529	2006.06.06
21	Galwaysland	292	2006.06.18
22	Yala East (Kumana)	35,665	2006.07.05
23	Lahugala- Kitulana	5,131	2006.07.20
24	Ussangoda	349	2010.05.06
	Sub Total	526,505	

S/N	Nature Reserve	Area (ha)	Date of Declaration
25	Trikonamadu	25,019	1986.10.24
26	Riverine	824	1991.07.31
27	Minneriya-Girithale		
	I. Block 2	1,924	1993.06.25
	II. Block 3	4,745	1995.07.07
	III. Block 4	8,336	1997.09.01
28	Wetahirakanda	3,229	2002.06.07
29	Peak Wilderness	12,979	2007.09.21
	Sub Total	32,037	

S/N	Sanctuary	Area (ha)	Date of Declaration
30	Chundikulam	11,149	1938.02.25
31	Wilpattu north	632	1938.02.25
32	Telwatta	1,425	1938.02.25
33	WeerawilaTissa	4,164	1938.05.27
34	Kataragama	1,004	1938.05.27
35	Polonnaruwa	1,522	1938.05.27
36	Thangamale	132	1938.05.27
37	Mihintale	1,000	1938.05.27
38	Kataragama	838	1938.05.27
39	Anuradhapura	3,501	1938.05.27
40	Udawattakelle	104	1938.07.29
41	Rocky Islands –(Ambalangoda)	1	1940.10.25
42	Peak wilderness	22,379	1940.10.25
43	Kuruluakele	113	1941.03.14
44	Welhillaketagilla	134	1949.02.18
45	Kokilai	1,995	1954.05.18
46	Senanayakasamudraya	9,324	1954.02.12
47	Galoya -North East (Ampara)	12,432	1954.02.12

48	Galoya -South West	15,281	1954.02.12
49	Giant's Tank	4,330	1954.09.24
50	Vavunikulam	4,856	1963.06.21
51	Sagaman	616	1963.06.21
52	Padawiya Tank	6,475	1963.06.21
53	Navel Headwork	18,130	1963.06.21
54	Great sobers Island	65	1963.06.21
55	Little sobers Island	7	1963.06.21
56	KimbulwanaOya	497	1963.06.21
57	Mahakandarawa	5,193	1966.12.09
58	Madu road	26,677	1968.06.28
59	SeruwilaAllei	15,540	1970.10.09
60	Maimbulkanda-Nittabuwa	24	1972.10.31
61	Paraitivu	970	1973.05.18
62	Honduwa Island	9	1973.11.19
63	Buddangala	1,841	1974.11.01
64	Rawanaella	1,932	1979.05.18
65	MedinDuwa	1	1980.06.06
66	Kalamatiya	2,525	1984.06.28
67	Sri Jayewardenepura	449	1985.01.09
68	Victoria RandenigalaRantambe	42,087	1987.01.30
69	Paraputuwa Nuns Island	190	1988.08.17
70	Kahalla-pallekale	21,690	1989.07.01
71	Sigiriya	5,099	1990.01.26
72	Bellanvila- Attidiya	372	1990.07.25
73	Bar Reef Island (welipara)	30,670	1992.04.03
74	Nimalawa	1,066	1993.02.18
75	Madunagala	995	1993.06.30
76	Muthirajawela Block I	1,029	1996.10.31
	Block II	257	1996.10.31

S/N	Sanctuary	Area (ha)	Date of Declaration
77	Anavilundawa	1,397	1997.06.11
78	ElaheraGirithale	14,035	2000.01.13
79	Dahaiyagala	26,851	2002.06.07
80	Rumassala	171	2003.01.03
81	Elluwilayaya	186	2003.09.11
82	Tabbowa	2,193	2002.07.19
83	Kiralakelle	310	2003.09.08
84	Kiramaoya	5	2004.10.06
85	Kudummbigala- Panama	6,534	2006.02.20
86	Wilmanna	3,340	2006.06.30
87	Godawaya	232	2006.05.25
88	Rekawa	271	2006.05.25
89	Maduganga	2,300	2006.07.17
90	Madampawila	1,217.75	2007.09.21
91	Vankellei	4,839	2008.09.08
	Sub Total	344,603.75	
S/N	Jungle Corridor	Area (ha)	Date of Declaration
92	Kaudulla-Minneriya	8,777	2004.06.01
	Sub Total	8,777	

CATEGORY : APPROPRIATION ACCOUNT(2012)

Form : A

	Financial Performance (Rs. In '000)					Physical Performance						
Description	Current Year		Previous Year Actual	Variations Over		Output(Service/Goods)		Current Year's output		Previous Years Output	Variations Over	
	Budgeted	Actual		Budged	Previous Year Actual	Type/class	Measure	Targeted	Actual		Targeted	Previous Years Actual
<div>Programme Title and No .</div> <div>01 Operational Activities</div> <div>Project Title and No. :</div> <div>01. Administration &</div> <div>Establishment Services</div> <div>Expenditure :</div> <div>Recurrent Expenditure</div> <div> * Personal Emoluments</div> <div> * Other Recurrent</div> <div>Total</div> <div>Capital Expenditure</div> <div>Total Expenditure</div>	379,904	379,897	327,213	(7)	52,684	Personal Emoluments	No.of Employees	1907	1203	1196	-704	7
103,166	100,784	101,091	(2,382)	(307)								
483,070	480,681	428,304	(2,389)	52,377								
737,350	424,154	403,142	(313,196)	21,012								
1,220,420	904,835	831,446	(315,585)	73,389								

CATEGORY : REVENUE ACCOUNTS(2012)

Form : B

	Financial Performance (Rs. In '000)							Physical Performance						
Description	Arrears of Revenue as at 01.01.2010	Current Year		Previous Years Actual	Variations Over		Arrears of Revenue as at 31.12.2010	Output(Service/Goods)		Current Year's Output		Previous Years Actual	Variations Over	
		Budgeted	Actual		Budgeted	Previous Years Actual		Type/class	Measure	Targeted	Actual		Targeted	Previous Years Actual
Revenue Codes 20.03.02.06	Nil	17,000	17,269	15,592	269	1,677	Nil	Foreign Visitors	No. of Visitors		254,052	206,541	-	(47,511)
								Local Visitors	No. of Visitors		779,711	748,656	-	(31,055)
Total Revenue		17,000	17,269	15,592	269	1,677								

CATEGORY : ADVANCE ACCOUNTS (2012)												Form : C	
	Financial Performance (Rs. In '000)					Physical Performance							
Description	Rs. 000		Previous Year	Variations Over		Output(Service/Goods)		Current Year's output		Previous Years	Variations Over		
	Current Year			Prescribed	Previous Year								Actual
	Prescribed	Actual	Actual	Prescribed	Previous Year Actual	Type/class	Measure	Targeted	Actual	Output Actual	Targeted	Previous Years Actual	
Type: Advance Account						Distress Loans	Applicant	500	447	336	(53)	111	
Account Title and No.: Public Officers Advance Account No 28401						Property Loans	Applicant	-		127	-	-	
						Vehicle Loans	Applicant	-	-	-	-	-	
						Indebt Loans	Applicant	100	8	-	-	-	
						Bicycle Loans	Applicant	21	21	7	0	14	
						Festival Loans	Applicant	1000	896	950	(104)	(54)	
- Maximum Expenditure Limit	40,000	32,440	39,237	(7,560)	(6,797)								
Minimum Receipt Limit	27,000	33,102	33,000	6,102	102	Tsunami / Special Loans	Applicant	-	-	63	-	(63)	
Maximum Debit Limit	127,000	117,240	113,900	(9,760)	3,340								
Maximum Liability													

CATEGORY : FUND ACCOUNTS (2012)												Form : D
	Financial Performance (Rs. '000)					Physical Performance						
Description	Current Year		Previous Year Actual	Variations Over		Output(Service/Goods)		Current Year's output		Previous Years Output	Variations Over	
	Budgeted	Actual		Budgeted	Previous Year Actual	Type/class	Measure	Targeted	Actual		Targeted	Previous Years Actual
Type: Fund Account Account Title and No. Wildlife Preservation fund 6000.0.0.6.20 Revenue Operational Non Operational Recurrent Expenditure : Operational : Non Operational Total Recurrent Expenditure Income Over Expenditure Capital Expenditure Net Worth						Foreign Visitors	No. of Visitors		254,052	206,514	-	47,538
						Local Visitors	No. of Visitors		779,711	748,656	-	31,055
						Raids	Cases filed			574	-	(574)
						Tracker Fees	No. of people		323	296	-	27
						Elephant drive	No. of Elephants		28	140	-	(112)
						Registration of Guns	No. of Guns		651	651	-	-
						Elephant burnt	No. of Elephants		80	96	-	(16)
						Radio licenses	No. of Units			431	-	(431)
						Service charge	No. of Employees	1907	1252	1228	-	24
	695,175	733,315	724,837	38,140	8,478							
	695,175	733,315	724,837	38,140	8,478							
	428,867	291,172	215,583	(137,695)	75,589							
	428,867	291,172	215,583	(137,695)	75,589							
	266,308	442,143	509,254	(175,835)	(67,111)							
	-	-	-	-	4,093							
	247,669	1,663,302	1,217,671	(1,415,633)	445,631							

