

ස්වදේශ කටයුතු අමාත්‍යාංශය
දිස්ත්‍රික් ලේකම් කාර්යාලය - පොලොන්නරුව
විසදුම් ශීර්ෂය - 275
වාර්ෂික කාර්යසාධන වාර්තාව හා ගිණුම් වාර්තාව - 2017

உள்ளநாட்டு அலுவல்கள் அமைச்சு
மாவட்டச் செயலகம் - பொலன்னறுவை
செலவினத் தலைப்பு - 275
வருடாந்த செயற்றிறன் அறிக்கைகளும் கணக்குகளும் - 2017

MINISTRY OF HOME AFFAIRS
DISTRICT SECRETARIAT - POLONNARUWA
VOTE NO - 275
ANNUAL PERFORMANCE REPORT & ACCOUNTS - 2017



MINISTRY OF HOME AFFAIRS
DISTRICT SECRETARIAT – POLONNARUWA
VOTE NO – 275
ANNUAL PERFORMANCE REPORT & ACCOUNTS
2017

CONTENTS

1		Message of District Secretariat /Government Agent Polonnaruwa	5
2		Introduction	6
	2.1	Vision & Mission	7
	2.2	Aims of District Secretariat	8
	2.3	Activities of District Secretariat	8
3		Introduction on District	9
	3.1	District Boundaries	9
	3.2	Historical Value of Polonnaruwa District.	10
	3.3	Educational Zones of the district and Number of schools at divisional secretariat level under such zones.	11
	3.4	Commercial & Economic Activities	11
	3.5	Number of Industrial Institutes in the district and percentage	12
	3.6	Milk & Eggs production at divisional secretariat level.	12
	3.7	Extent of lands that permanent and semi permanent crops being cultivated and harvest.	13
	3.8	Seasonal crop cultivation of the district	14
	3.9	Population information of the district	14
	3.10	Irrigation System	15
4		Organizational Structure and Approved Cadre	16
	4.1	Organizational Structure	16
	4.2	Cadre information	17
5		Performance	18
	5.1	Progress of General Administration	18
	5.1.1	Internal Audit Section	18
	5.1.2	Grama Niladhari Activities	19
	5.1.3	Census & Statistics Section	19-20
	5.1.4	District Agriculture Director's Office	21-23
	5.1.5	District Disaster Management Unit	24-26
	5.1.6	Divineguma Development Department	27-30
	5.1.7	Activities of the Motor Traffic District Office	31
	5.1.8	Elections Branch	32
	5.1.9	Land Use & Policy Planning Office	33
	5.1.10	Women's Affairs Development Section	34-37
	5.1.11	District Planning Office	38-39
	5.1.12	Small Enterprises Development Section	40-44
	5.1.13	Carrier Guidance Section	45-46

	5.2	Activities performed by divisional secretariats	47
	5.2.1	Registration of Birth/Marriage/Deaths	47-49
	5.2.2	Other license	49-51
	5.2.3	Samurdhi, Social service & Disaster relief service	51-53
	5.2.4	Registration of Business Names	53-54
	5.2.5	Electricity Objections	54
	5.2.6	Issuance of vehicle revenue license	55
	5.2.7.	Activities related to Elders	55-56
	5.2.8	Activities related to Children	57
	5.2.9	Disabled Rehabilitation	58-59
	5.2.10	Advance issued under government officer's "B" account	60-62
	5.2.11	Details of Religious & Cultural Affairs	62-65
	5.3	Finance Management	66
	5.3.1	Funds received from other departments/Ministries and expenditure - 2017	66
	5.3.2	Monthly Revenue collection – Various Depts.: /Ministries	67
	5.3.3	Financial Summary – Programme 275	68
	5.3.4	Appropriation Account as per the Programmes - 2017	69
	5.3.5	Summary of Control Accounts for Advance Account & Deposit Accounts	70

1. Message of District Secretary



I am pleased to inform that during past few years including the year 2017 in particular we witnessed that an unprecedented amount of investments has been diverted to the district of Polonnaruwa which consists of 655 villages, 295 Grama Niladhari divisions and 07 Divisional Secretary's divisions.

I have the utmost satisfaction that the majority of the projects have achieved the expected goals due to the commitment and determination of divisional officers in this transforming era where the Head of the State is also from Polonnaruwa.

Investment of an enormous amount of resources in 18 fields including Health, Education, Agriculture, Highways and Irrigation under the “Pibidemu Polonnaruwa” project implemented under the patronage of His Excellency the President has to be highlighted in addition to the funds allocated by various departments and ministries on a regular basis.

In this context, I have the pleasure in presenting “Performance and Accounts Summary 2017” report which shows 90% progress and would like to avail this opportunity to extend my sincere gratitude to all the government officials including 07 Divisional Secretaries who are committed to the prosperity of Polonnaruwa district and also to ensure a better public service in compliance with government policies, circulars, instructions, and regulations while maintaining a financial discipline in a transparent manner.

Ranjith Ariyaratna

District Secretat/Government Agent

Polonnaruwa

Introduction

The annual performance report of Polonnaruwa
District Secretariat for year 2017 is hereby
Submitted in terms of the section 2:4 of the
Public Finance Circular No: 402 of 12.09.2002

This report has been prepared to prove the
Performance by analyzing data and information
of finance and other functions of
District and 07 Divisional Secretariats
of the District.

On .2018
At District Secretariat,
Polonnaruwa

Ranjith Ariyaratna
Government Agent/District Secretary
Polonnaruwa

2.1. Vision & Mission



Vision

To become the most Prosperous District in Sri Lanka



Mission

Our Mission is the effective coordination and maneuver of resources and institutes to accomplish the public requirements efficiently, reasonably, legitimately and amiably to ensure a sustainable development in the district.



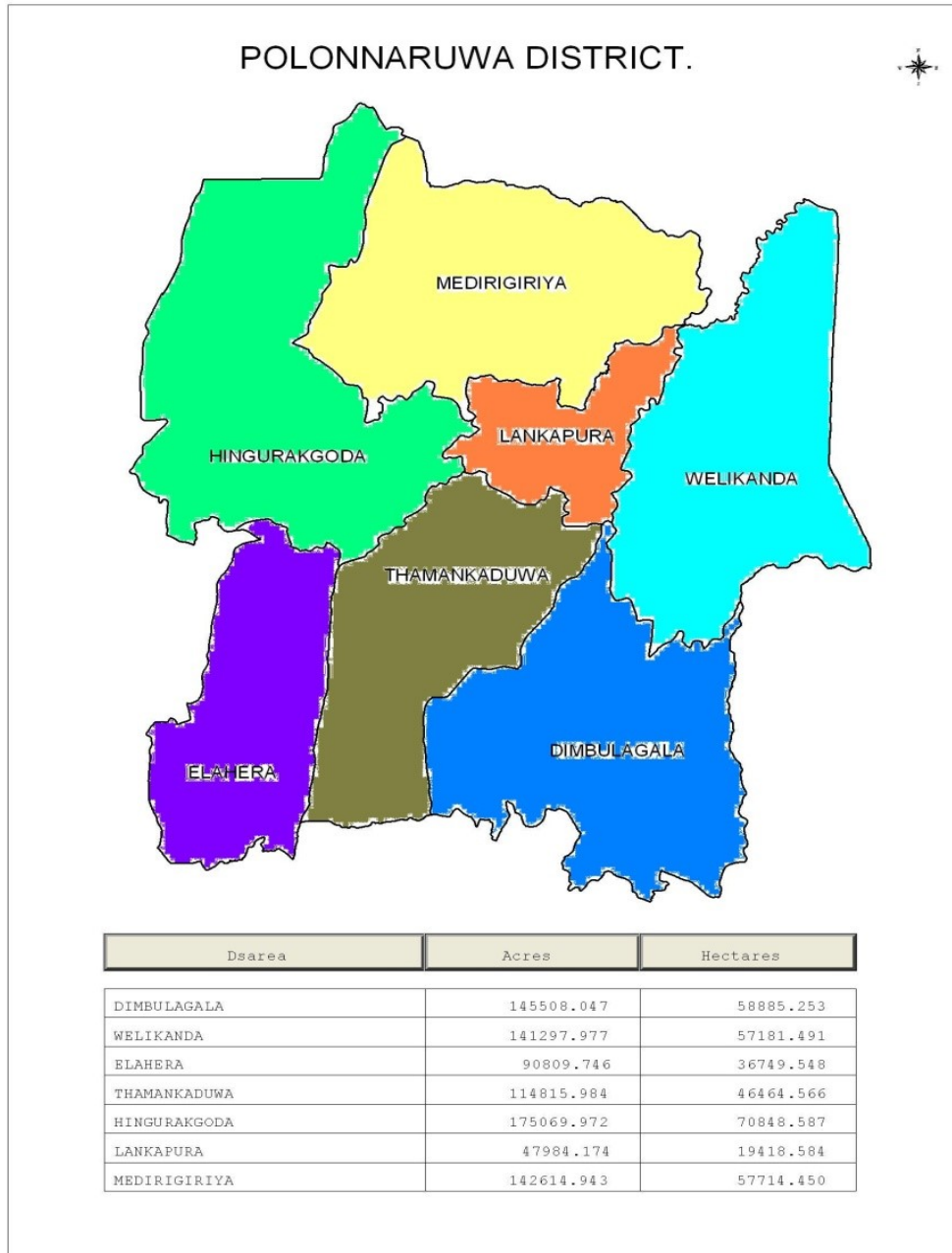
2.2 Aims of District Secretariat

- ♦ Providing an efficient Service.
- ♦ Uplifting living status of rural community.
- ♦ Securing & preservation of cultural values and norms.
- ♦ Readiness to be protected and provide protection from natural disasters.
- ♦ Coordination of activities at divisional and village level.

2.3 Activities of District Secretariat.

- Acting as the district representative of the government.
- Coordinating government departments and institutions.
- Implementing district development plan through district coordinating committee.
- Allocating funds for District and Divisional administrative development affairs and controlling finance.
- Updating voters registries in the Polonnaruwa district and issuing respective certificates.
- Conducting elections noticed by the government.
- Organizing national & district level festivals.
- Determining district prices and implementing disaster and welfare, forest resources, environment, housing constructions, insurance, land use and agricultural development committees.
- Coordinating affairs related to Samurdhi programme with divisional secretariats.
- Training and guiding of small enterprises development programme.
- Certifying and maintaining of measurement instrument under due standards.
- Coordinating the registration of land deeds, births, deaths & marriages.
- Implementing provisions of Consumer Protection Act.
- Issuing driving licenses and implementing provisions of motor vehicle ordinance..
- Co-ordinating pensions programme.
- Career Guidance Activities
- Awereness of productivity improvement.
- Maintaining and updating statistics of various fields in the district.
- Issuing permits for fire arms, explosives and timber information.
- Establishment activities of the officers of District and Divisional secretariats.

3.Introduction of Polonnaruwa District



3.1 District Boundaries

Polonnaruwa district is situated in a plain valley of Mahaweli river in North Central Province in Sri Lanka and 216 kilometers away from Colombo and further it is the main city of the district as well. Total land extent of the district is 3337.9 square kilometers. District is located between Northern latitude 7°40" – 8°21" and Eastern longitude 80°44" – 81°20" and elevation is 50-500 meters. District is being bounded to Trincomalee, Batticaloa, Ampara, Matale and Anuradhapura districts.

3.2 Historical Value of Polonnaruwa District.



Anuradhapura kingdom was collapsed in 1017 A.D. , when king Mihidu the Fifth taken to India by Chola King Raja Raja and his son Rajendra. Then Polonnaruwa became the capital of Sri Lanka. “Solees” called Polonnaruwa even as “Jananathapuram”. Kings in Anuradhapura developed Polonnaruwa as a secondary city as the availability of water resources and soil conducive for paddy cultivation. In this context Elahera Canal was constructed by Wasaba in 67-111 A.D and

Minneriya and Kaudulla reservoirs were constructed by King Mahasen in 365-406 A.D. Thopawewa and Girithale reservoirs were respectively constructed by Upatissa the First and Aggabodhi the second. Polonnaruwa was located in a significant place in security aspect.

King Wijayabahu the Great (1055-1110 A.D) became the first king of Polonnaruwa who liberated the country from “Solees” . He renovated all the reservoirs and temples in the area and initiated economical development of the country. Then Jayabahu, Wickramabahu and Gajabahu became kings of Polonnaruwa. Subsequently, the most prolific ruler of Polonnaruwa king Parakkramabahu the Great became king of Polonnaruwa. (1153– 1186 A.D) He could develop not only Polonnaruwa but also the whole country and Sri Lanka became the “Granary of the East”. After the demise of king Parakkramabahu the Great king Nissankamalla , queen Leelawathi became the monarchs of Polonnaruwa.

Administration as well as the economy was in total disarray due to poor governance of kings at that time and Kalinga Maga (1214 A.D) exploited the situation and invaded the Rajarata area and accordingly the kingdom was shifted the south eastern part of the country and this area was covered by forest. Refurbishment of archeological monuments that were covered by forest and earth was started by the Department of Archeology formed during British rule. Such activities are presently done by Central Cultural Fund. Currently Polonnaruwa has named as a world heritage city.

At present vast development being taking place in Polonnaruwa under “Pibidemu Polonnaruwa” project which is implemented under the patronage of His Excellency Maithreepala Sirisena the president of Democratic Socialist Republic of Sri Lanka.



3.3 Educational Zones of the district and Number of schools at divisional secretariat level under such zones.

Educational Zone	Educational Division	Divisional Secretary's Division	No: of Schools
Polonnaruwa	Thamankaduwa	Thamankaduwa	32
	Lankapura	Lankapura	20
Hingurakgoda	Hingurakgoda	Hingurakgoda	33
	Medirigiriya	Medirigiriya	33
	Elahera	Hingurakgoda	1
	Elahera	Elahera	27
Dimbulagala	Dimbulagala	Dimbulagala	32
	Welikanda	Welikanda	39
	Aralaganwila	Dimbulagala	31
Total			248

3.4 Commercial & Economic Activities

Average Harvest Per Net Hectare In The District As Per The Cultivating Season 2011-2016

Cultivating Season	Average Harvest per Net Hectare (KG)				
	Large	Small	Rain Fed	District	Sri Lanka
2011/12 Maha	5150	4624	3960	5080	4444
2012 Yala	4252	3119	-	4199	4125
2012/13 Maha	5012	4066	4527	4889	4281
2013 Yala	4788	4245	-	4725	4408
2013/14 Maha	4795	5228	3861	4819	4222
2014 Yala	4906	4826	-	4902	4204
2014/15 Maha	5343	5157	4360	5306	4364
2015 Yala	5140	5054	-	5131	4527
2015/16 Maha	5109	5026	3443	5056	4349
2016 Yala	5029	5240	-	5047	4417

3.5 Number of Industrial Institutes in the District & Percentage -2017

Institute	Number	Percentage %
Mines & Excavations	20	2.3
Food, Beverages and Tobacco	119	13.5
Textile, Garments and Leather Products	158	17.9
Timber, Timber Products and Furniture	108	12.2
Paper Products & Printing	33	3.7
Chemicals, Petroleum , Rubber and Plastic	8	0.9
Non Metallic Petroleum Products	131	14.8
Basic Metallic Industries, Metallic Products, Plant & Machinery	22	2.5
Other Manufacturing Industries	276	31.2
Water associated activities & water supply	9	1.0
Total	884	100

3.6 Milk & Eggs Production at Divisional Secretariat Level-2017

D.S. Division	Cow's Milk		Curd		Eggs	
	No: of Milk-ing Cows	Daily Pro-duction (liters)	No: of Milk-ing Female Buffalos	Daily Pro-duction (liters)	No: of Hens Laying Eggs	Daily Pro-duction.
Thamankaduwa	1455	4251	745	1708	8901	6175
Dimbulagala	3751	9582	558	880	5386	4476
Hingurakgoda	633	2432	427	693	4185	2934
Medirigiriya	1956	4767	631	1777	8354	7003
Welikanda	2222	5954	1593	2664	40176	32423
Elahera	308	1331	15	35	2952	1848
Lankapura	1044	2683	932	1739	2176	2031
Total	11369	31000	4901	9496	72130	56889

3.7 Extent of lands that permanent and semi permanent crops being cultivated and harvest.

Crop	Extent of Land Cultivated (Hectares)		Yield	
	Fructify	Not Fructify	Unit	Quantity
cinnamon	-	-	Kg.	-
coffee	0.80	0.60	Kg.	-
cocoa	-	-	Kg.	-
Pepper	81.45	46.16	Kg.	56935
cardamom	-	-	Kg.	-
cloves	-	-	Kg.	-
Arecanat	73.89	47.13	Kg.	791125
Cashew	88.90	87.00	In 1000s	155270
Orange	181.78	113.17	In Nos.	1686500
Lime	1745.85	130.58	In Nos.	3857625
Mango	512.28	311.49	In Nos.	9145500
Jack	439.77	244.84	In Nos.	2255930
Jackfruit	-	-	In Nos.	-
Cane sugar	-	-	In Nos.	-
plantain	577.78	261.66	In 1000s	580562
Papaw	77.91	48.31	In Nos.	393074
Pineapple	27.01	4.60	In Nos.	114925
Passion fruit	0.40	0.40	In Nos.	500
Beetle	17.62	10.20	In 1000s	4820

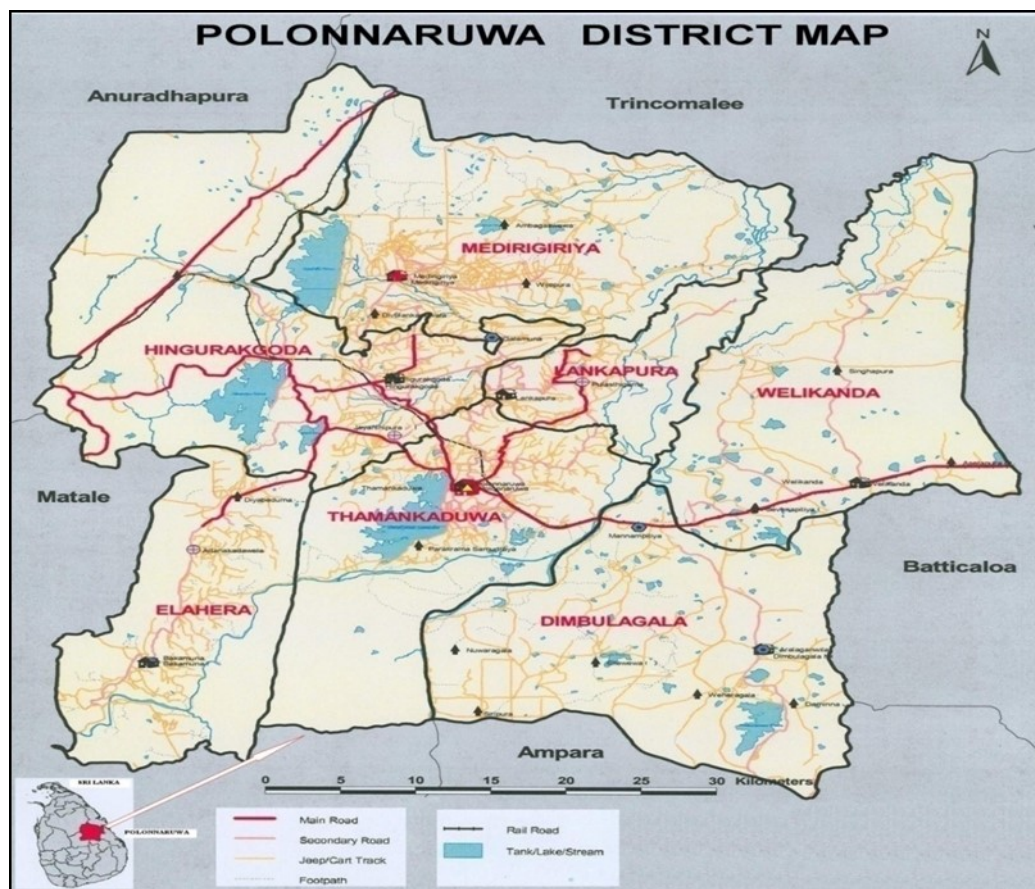
3.8 Seasonal Crop Cultivation of the District. -2017

Crop	Cultivated extent (Hectares)		Yield (MT)	
	2015/16 (Maha)	2016 (Yala)	2015/16 (Maha)	2016 (Yala)
Kurakkan	59.77	36.34	83.60	51.85
Maize	406.50	368.42	983.47	736.14
Green gram	135.75	86.84	210.61	133.63
Cowpea	103.29	44.22	119.81	60.45
Black gram	10.03	18.31	11.30	21.12
Gingerly	25.63	17.15	20.10	20.15
Peanut	226.29	161.05	503.93	346.14
Manioc	358.14	230.15	6061.50	4085.13
Sweet potatoes	124.85	94.74	1119.55	927.98
Red onion	6.50	6.45	64.84	64.85
Green chilies	141.20	97.06	802.78	471.05
Mustard	1.41	1.00	0.90	0.65
Ginger	17.28	15.47	98.89	88.53
Turmeric	9.74	9.61	61.20	62.60
Luffa	69.94	46.67	737.48	440.25
Ladies fingers	92.67	65.36	1087.10	862.25
Brinjals	118.12	74.87	1583.58	1032.28
Bitter-gourd	44.33	21.93	573.13	282.00
Snake gourd	35.27	16.93	308.30	174.45
Tomatoes	32.08	14.73	291.03	151.83
Cucumber	28.32	20.16	317.90	177.38
Radish	15.59	8.37	168.30	97.38
Bean	11.20	4.32	51.05	21.05
Ash-pumpkin	2.40	0.04	16.20	2.00
Pumpkin	72.95	53.54	1014.83	762.43
Ash-plantain	150.18	96.62	1959.85	1319.15
Capsicum	16.50	8.67	80.11	63.00
B Onion	18.05	184.14	278.00	2931.88

3.9 Population Information of the District

Population & Population Density as per Divisional Secretary's Division						
Divisional Secretary's Division	Population				Square Area. (Hectare)	Population Density
	Urban	Rural	Estate	Total		
Thamankaduwa	-	85030	17	85047	46628.6	1.91
Dimbulagala	-	82194	-	82194	58183.5	1.41
Hingurakgoda	-	66333	-	66333	70905.7	0.94
Medirigiriya	-	67660	-	67660	57404	1.18
Welikanda	-	34844	-	34844	57375.2	0.61
Elahera	-	45311	-	45311	36364.5	1.25
Lankapura	-	37611	-	37611	19776.7	1.9
Total		418983	17	419,000	346,638.2	1.25

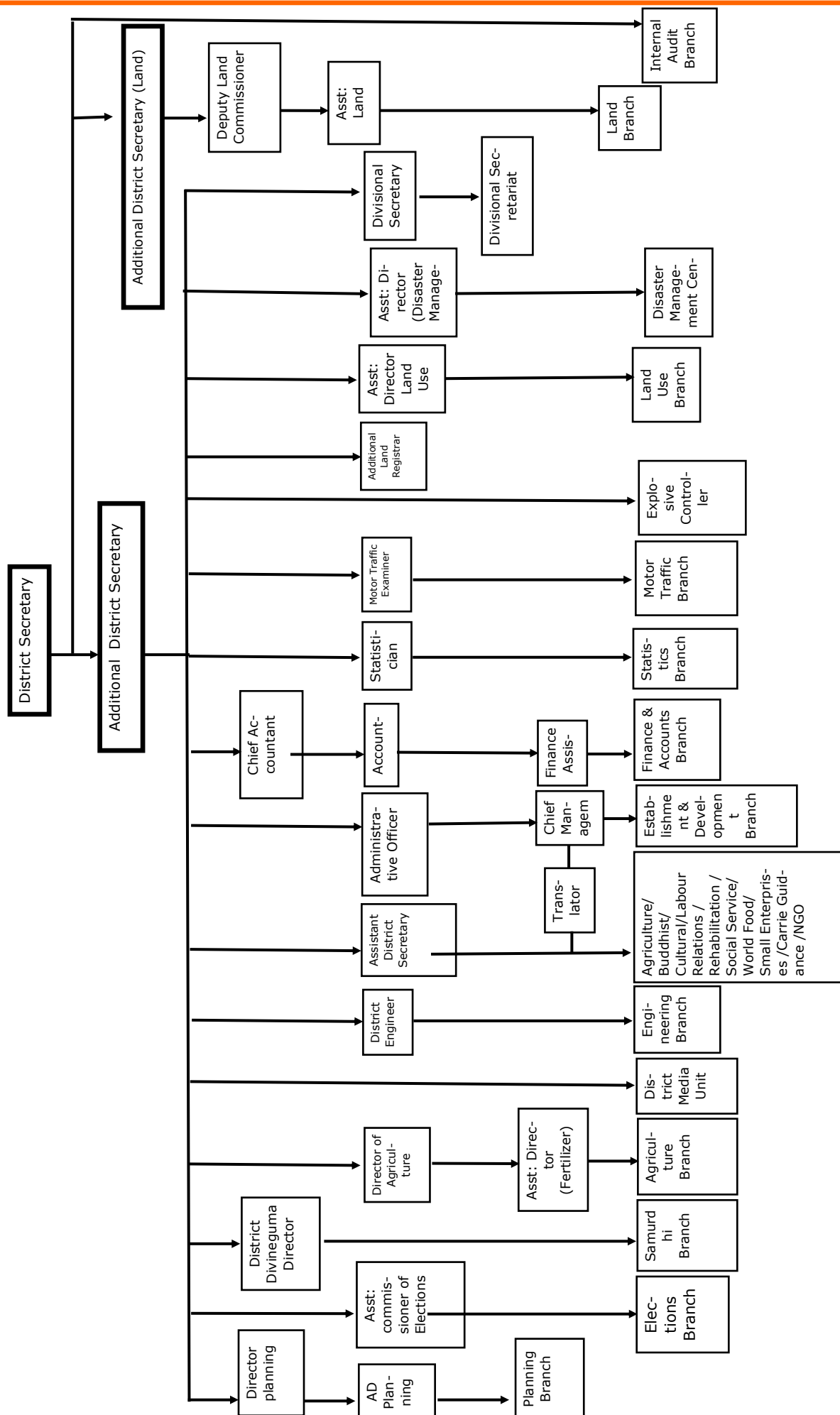
3.10 Irrigation System



Reservoir *	Divisional Secretary's Division Where Reservoir is Located.	Capacity (Acre Feet)	Catchment Area (Acres)**	Surface Extent (Acres)
Parakkramasamudraya	Thamankaduwa	116100	18661	6177
Minneriya reservoir	Hingurakgoda	110000	59264	6300
Girithale reservoir	Hingurakgoda	21600	6016	917
Rotawewa	Hingurakgoda	1028	4800	N/A
Kauduluwewa	Medirigiriya	104000	22400	6400
Bebiyawewa	Medirigiriya	938	1856	261
Ambagaswewa	Medirigiriya	4000	12512	318
Mahahalmillewa	Medirigiriya	900	1575	260
Ellewewa	Dimbulagala	1100	330	N/A
Peskulamawewa	Elahera	1750	439	535

* Large scale reservoirs that water taken for agriculture activities and cultivated lands are over 200 acres

4.1 Organizational Structure



4.2 Cadre Information

Designation	Approved Cadre							Available							Vacancies							Total						
	Dis- trict Sec- retari at	Tha ma nka du wa	Medi rigiri ya	Hin gur akg oda	Elah era	Lan kap ura	Dim bul aga la	We lika nd a	Total	Dis- trict Sec- retar iat	Tha ma nka duw a	Med irigi riya	Hin gur akg oda	Ela her a	La nk ap ur a	Dim bula gala	W eli ka nd a	Total	Dis- trict Sec retar iat	Th a m an ka du w a	M ed iri giri ya		Hin gur ak go da	El ah er a	La nk ap ura	Di m bu la ga la	W eli nd a	
Ditric Secretary	1	-	-	-	-	-	-	-	1	1	-	-	-	-	-	-	-	-	1	-	-	-	-	-	-	-	-	
Additional District Secretary	2	-	-	-	-	-	-	-	2	2	-	-	-	-	-	-	-	-	2	-	-	-	-	-	-	-	-	
Director Planning	1	-	-	-	-	-	-	-	1	1	-	-	-	-	-	-	-	-	1	-	-	-	-	-	-	-	-	
Chief Accountant	1	-	-	-	-	-	-	-	1	1	-	-	-	-	-	-	-	-	1	-	-	-	-	-	-	-	-	
Chief Internal Audotor	1	-	-	-	-	-	-	-	1	1	-	-	-	-	-	-	-	-	1	-	-	-	-	-	-	-	-	
Asst: District Secretary	1	-	-	-	-	-	-	-	1	1	-	-	-	-	-	-	-	-	1	-	-	-	-	-	-	-	-	
D/D,AD Planning	1	1	1	1	1	1	1	1	8	1	1	1	1	1	1	0	1	1	7	1	-	-	-	-	1	-	2	
District Engineer	1	-	-	-	-	-	-	-	1	1	-	-	-	-	-	-	-	-	-	-	-	-	-	-	-	-	1	
Divisional Secretary	0	1	1	1	1	1	1	1	7	0	1	1	1	1	1	1	1	7	-	-	-	-	-	-	-	-	-	
Asst: Divisional Secretary	0	1	1	1	1	1	1	1	7	0	1	1	1	1	1	-	-	1	5	0	-	-	-	-	1	1	3	
Accountant	1	1	1	1	1	1	1	1	8	1	1	1	1	1	1	1	1	1	8	-	-	-	-	-	-	-	-	
Administrative Officer	1	1	1	1	1	1	1	1	8	1	1	-	1	-	0	-	1	0	4	0	0	1	-	1	1	0	1	4
Grama Niladhari Admin- istration	0	1	1	1	1	1	1	1	7	-	0	0	1	0	1	0	0	2	0	1	1	0	1	0	1	1	1	10
Additional District Registrar	-	-	-	-	-	-	-	-	0	-	-	-	-	-	-	-	-	0	-	0	0	0	0	0	0	0	0	-
Translator (S/E)	1	-	-	-	-	-	-	-	1	1	-	0	0	0	0	0	0	-	0	0	0	0	0	0	0	0	0	-
Translator (S/T)	1	1	-	-	-	1	1	1	5	0	1	0	0	0	0	0	0	1	1	1	-	0	0	0	1	1	3	
Information Technology Officer	2	1	1	1	1	1	1	1	9	0	0	0	0	0	0	0	0	0	0	0	1	1	1	1	1	1	7	
Development Officer	31	67	57	65	40	40	68	42	411	28	35	36	24	30	33	26	16	228	3	32	21	41	10	7	42	26	20	
Technical Officer	2	2	2	2	2	2	2	2	16	1	2	1	1	1	1	1	1	8	1	0	1	1	1	1	1	1	6	
Public Management Asst; Service	32	33	32	32	25	25	30	25	234	32	31	32	30	20	23	20	20	176	0	2	0	2	5	2	10	5	26	
Grama Niladhari	0	55	45	53	28	28	56	30	295	0	50	35	38	25	24	45	26	243	0	5	10	15	3	4	11	4	52	
Draughtsman	1	-	-	-	-	-	-	-	1	1	0	0	0	0	0	0	0	1	0	0	-	0	-	-	0	0	0	
Technical Asst:	2	1	1	1	1	1	1	1	9	2	1	0	1	1	1	1	1	6	0	0	1	0	0	0	0	0	1	
Driver	8	2	2	2	2	2	2	2	22	6	2	2	2	2	2	2	1	13	2	0	0	0	0	0	0	0	1	
Development Coordinator	0	1	1	1	-	-	1	-	4	0	1	1	1	-	-	1	-	4	0	-	-	-	-	-	-	-	0	
Cheff	1	-	-	-	-	-	-	-	1	-	-	-	-	-	-	-	-	-	0	-	-	-	-	-	-	-	0	
K.S.S.	15	9	8	8	6	7	8	7	68	15	9	5	6	6	8	8	6	48	0	0	3	2	0	-	0	1	5	
Total	107	178	155	171	111	113	176	117	1129	97	137	116	109	89	95	108	75	768	8	41	39	62	22	18	68	42	141	

5. Performance

5.1 Progress of General Administration

5.1.1 Internal Audit Activities

Aims of Internal Audit Branch :-

- ◆ Participating in the internal finance administration of District Secretariat and divisional secretariats and preventing any fault or fraud being take place and having inquires on methodologies apply to disclose such fault or fraud.
- ◆ Authenticating the progress of development programmes and projects that are implemented by district secretariat and divisional secretariats

Activities of Internal Audit Branch :-

- ◆ Prevention of faults and frauds and verifying the availability of methodologies to find out such frauds and faults
- ◆ Verifying the trustworthiness of account reports
- ◆ Verifying the performance of office staff
- ◆ Verifying the availability of adequate security for the assets of district and divisional secretariats
- ◆ Finding out whether the office activities are carried out as per the provisions of the establishment code, financial regulation and instructions given by ministries and the treasury
- ◆ Identification of waste and excessive expenses and verifying efforts internally used to find out such faults
- ◆ Feedback and report of the physical progress and conformity with the expected target of development programmes
- ◆ Feedback and report of activities carried out through budget allocations and other administrative proceedings
- ◆ Coordination of district audit management committee

Divisional Secretariat	Submission of Internal Audit Reports up to Fourth Quarter 2017	Receiving Answers
Hingurakgoda	4	3
Dimbulagala	3	3
Welikanda	4	1
Medirigiriya	4	3
Thamankaduwa	-	-
Elahera	2	2
Lankapura	4	3
District Secretariat	03 Internal Audit Reports	x
	01 Vehicle Administration Report relevant to Planning Office	√
	01 Vehicle Administration Report Relevant to District Secretariat	x
	01 Report on government quarters audit.	√
	Conducting 03 Audit committees.	

5.1.2 Grama Niladhari Activities

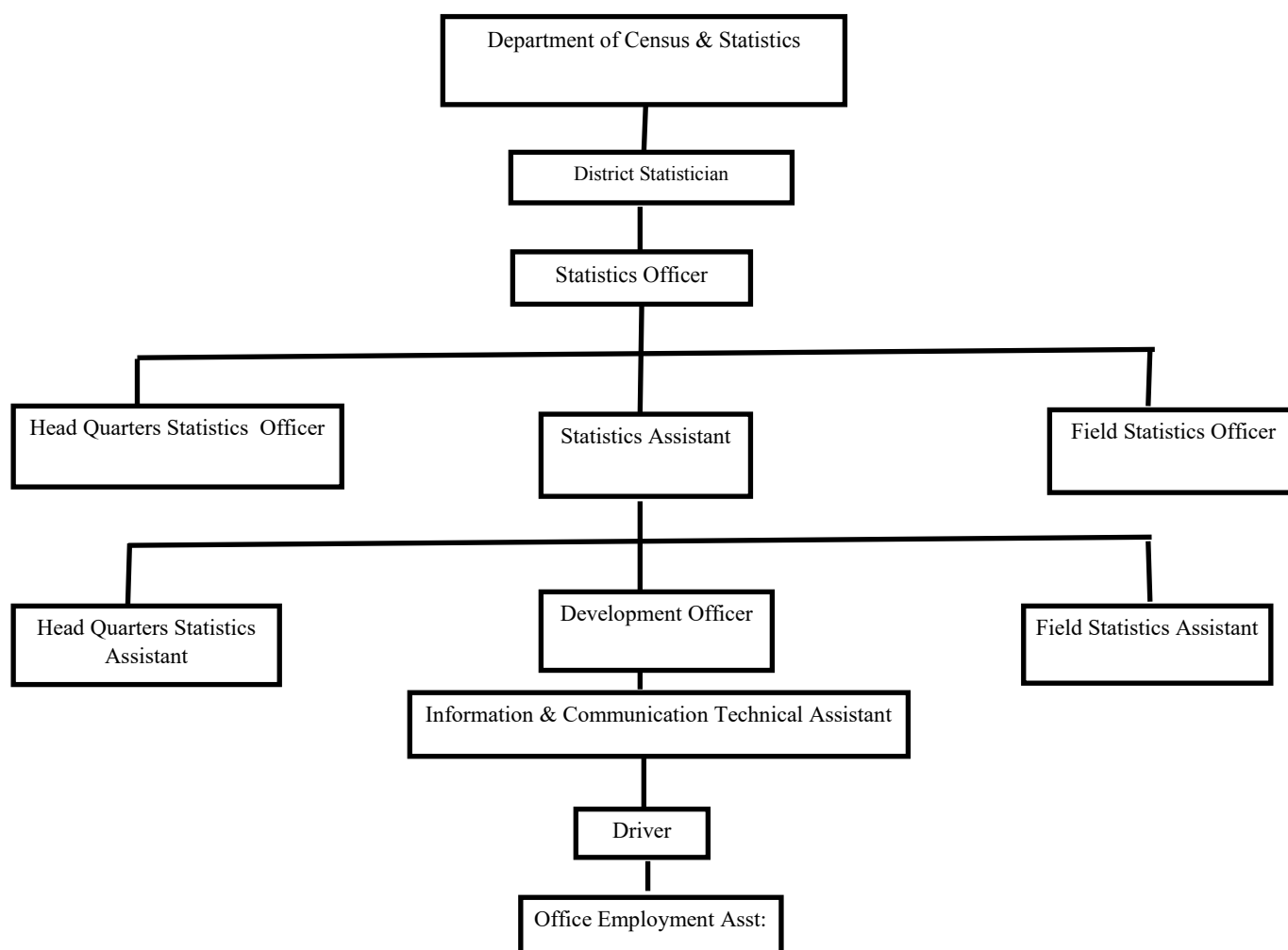
- ◆ Working as a peace officer by imposing the powers vested by civil code procedure
- ◆ Imposing the powers vested by various ordinances and regulations and reporting the violations of the same to courts
- ◆ Collection of economical, social and cultural data with required updates and providing the same to the government and other institutes over the instructions of divisional secretary
- ◆ Coordination and implementation of government social, economical and cultural development programmes within the ward
- ◆ Ensuring the social welfare activities in the ward
- ◆ Maintaining the Grama Niladhari official diary as a legal document
- ◆ Keeping up a resourceful Grama Niladhari office in the ward through maintaining a well organized file system, inventory book and other legal documents
- ◆ Except the Grama Niladhari's leave day , 24 hour commitment in all other days for public service (Grama Niladhari's are entitled for one leave day per week)

5.1.3 Census & Statistics Branch

Aim & Role:-

Contributing to the national development through collecting, processing and publishing accurate and updated information required in evaluating socio economical values and policy planning and implementation

Staff Arrangement :-



Serial No:	Activity	Date of Completion	Progress to the relevant date
1.	Collections of Agriculture Statistics of crops(2016/17Maha & 2017 Yala)	Within the season	100%
2.	Paddy harvest estimating survey -2016/17 Maha -2017 Yala	15 th May 15 th October	60% 30%
3.	Preparation of highland agricultural statistics reports 2016/17 Maha 2017 Yala	30th June 30th November	100% 100% 100%
4.	Preparation of Livestock Statistics reports	15 th September	100%
5.	Annual Survey of industries, trade & service-2017	Annually	100%
6.	Quarterly Industries Survey	Once a quarter	100%
7.	Report of Slaughters	30 th March	100%
8.	Survey of Labour force in Sri -Lanka.	Monthly	100%
9.	Report of Local Government Statistics	01st March	100%
10.	Inland production price and urban price collecting reports Weekly price collection (Batch 1A) Fortnight Price collection (Batch 1) Monthly Price Collection (Batch 11) Quarterly Price Collection (Batch 111) Price of Local Cultivators	Weekly Once a Fortnight Monthly Quarterly Monthly	100% 100% 100% 100% 100%
11.	Survey on big onion cultivation	Yala Season	100%
12.	Preparation of statistic hand book & Collection of data 2017	Annually	100%
13.	Labour force survey coding of income & expenditure schedules and computerizing data.	Monthly	100%
14.	Satellite Survey	Monthly	100%
15.	Time Use Survey	Monthly	100%
16.	Survey on Timber Log	Once a Quarter	100%
17.	Survey on Agriculture & House Hold	Monthly	100%
18.	Survey on Labour Demand	Monthly	100%

5.1.4 District Agricultural Director's Office.

Objectives & Role of Agricultural Branch :-

- Ensuring the food & nutritious Security
- Implementing Projects on time
- Implementation of expedite food production programmes efficiently & effectively.
- Implementation all projects pertaining to agriculture sector & coordination of other institutes .
- Implementation & coordination of projects that implement by the ministry of agriculture & presidential secretariat.

Projects performed during year 2017

01. Project - issuing seeds paddy free of charge for the farmers of Girithale & Kaudulla who have not cultivated in 2016/2017 Maha season.



- Issuing 36000 bushels of seeds paddy for 8500 farmers of Girithale & Kaudulla Schemes
- Providing 6000 kilos of green gram for 400 farmers to be cultivated in stubble at the end of Yala season in Girithale Scheme.

Funded Agency	-	Ministry of Agriculture
Implemented Agency	-	District Agricultural Director's Office
Funded Amount	-	608.3 Million Rupees
Expenditure	-	608.3 Million Rupees

01. Project - Supplementary Food Crop Cultivation

Green gram, Cawpea ,Black Gram ,Gingerly, Peanut, Maize , Chile seeds were distributed among beneficiaries from interprovincial areas of Polonnaruwa district under supplementary food crop promotion programme.



Funded Agency	-	Presidential Secretariat
Implemented Agency	-	District Agriculture Director's Office
Funded Amount	-	1.401 Million Rupees
Expenditure	-	1.401 Million Rupees

02. Project - Maize Project

- Providing 10,000 maize seeds to farmers through Elahera project office
- Providing 9000 maize seeds to farmers through Dimbulagala MPCs



Funded Agency	-	Presidential Secretariat
Implemented Agency	-	District Agriculture Director's Office
Funded Amount	-	22 Million Rupees
Expenditure	-	22 Million Rupees

03. Project - Multi Lateral Action Plan related to Nutrition 2017
Awareness Programme for Farmers



Funded Agency	-	Presidential Secretariat
Implemented Agency	-	District Agriculture Director's Office
Funded Amount	-	Rs: 126,000.00
Expenditure	-	Rs: 123,000.00
Balance	-	Rs: 3,000.00

04. Project - Fruit Village Project

Providing 1000 TOEJESI mango plants for Nawaloka Agro project at Welikanda Divisional Secretary's division



Funded Agency	-	Presidential Secretariat
Implemented Agency	-	District Agriculture Director's Office
Funded Amount	-	0.4 Million Rupees
Expenditure	-	0.353 Million Rupees
Balance	-	Administrative Cost

5.1.5 Disaster Management Unit.

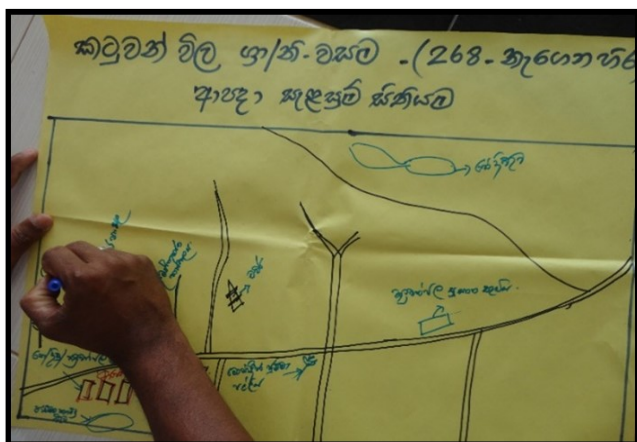
In terms of the Disaster Management Policy

Vision :- A Sri Lanka free from disasters

Objective :- Protect people, property and environment from disasters

Serial No:	Divisional Secretary's Division	No: of Programmes	Expenditure
01	Thamankaduwa	03	18,100.00
02	Elahera	02	40,000.00
03	Welikanda	02	24,000.00
04	Medirigiriya	02	24,000.00
Total		10	106,100.00

Summary of The Programmes Implemented by Preparedness Section of our Unit in 2017



Summary of the programmes conducted by awareness and training section – 2017

Serial No:	Divisional Secretary's Division	No: of Programmes	Expenditure
01	Thamankaduwa	06	115,000.00
02	Welikanda	02	43,750.00
03	Dimbulagala	03	55,000.00
Total		11	213750.00



Other Programmes Implemented during Year 2017

Serial No:	Name of the Programme	Date	Location
01	Conducting awareness programmes on Disaster Management for army officers who are undergoing training .	2017.01.31	Katukeliyawa Army Camp , Minneriya .
02	Conducting an awareness programme on disaster management & camp management for youth undergoing training at youth battalion	2017.02.21	Kekirawa Youth Battalion
03	Conducting awareness programmes on Disaster Management for army officers who are undergoing training	2017.03.01	Punani Army Camp Welikanda .

Progress of the Projects implemented by District Disaster Management Unit 2017

Programme /Project	Implementing Agency	Total Estimate (Rs:)	Issued Advance (Rs:)	Total Expenditure to Complete the Project: (Rs:)	Final Amount Granted (Rs:)	As at reporting date:	
						Financial Progress	Physical Progress
Construction of Flood controlling walls at the two banks of Kahambiliya Oya.	Irrigation Office , Minneriya	15,386,000.00	3,077,200.00	11,458,950.00	8,381,750.00	100%	100%
Dredging the silt of Thambalawewa		3,259,000.00	651,800.00	725,285.00	73,485.00	100%	100%
Dredging the silt of Kadawalawewa		4,344,000.00	868,800.00	2,180,588.90	1,311,788.90	100%	100%
Construction of Gammeda bridge at 03 Ela	Thamnaka-duwa D.S. office	1,032,257.23	206,451.45	653,152.16	446,700.71	100%	100%
Renovation of bridge across Thimbiriela at Hingurakgoda Muanpellesa Road	Engineering Branch of District Secretariat	2,821,328.62	564,265.72	564,265.72	-	25%	-
Flood Minimization programme at 07th Mile Post Village	Lankapura D.S. Office	1,960,000.00	640,000.00	3,198,720.00	2,558,720.00	100%	100%
		1,176,000.00					
Renovation to left bank of 503 anicut at Tract 04, Aralaganwila.	Dimbulagala D.S. Office	1,999,675.88	399,935.18	1,937,685.93	1,537,750.75	100%	100%
Construction of Flood controlling wall to the length of 250 meters at left bank of Kudaoya at Aralaganwila Tract 04 G.S division		1,635,244.01	327,048.80	1,584,551.44	1,257,502.64	100%	100%
Construction of the draining system at Marasinghawatta	Hingurakgoda D.S. Office	1,764,774.48	352,954.90	1,714,352.35	1,361,397.45	100%	100%

Renovation Programme of Waste Water Draining Systems Implemented Under Pibidemu Polonnaruwa District Development programme - Rajarata Navodaya Presidential programme.

Serial No:	Divisional Secretary's Division	Length (km)	Amount of draining systems renovated	Gross Estimate	Physical Progress (%)
01	Thamankaduwa	65.7	45	9.9 Millions	100%
02	Elahera	32	34	6.3Millions	100%
03	Dimbulagala	160.05	83	20.5Millions	100%
04	Medirigiriya	111	24	17.8Millions	100%
05	Hingurakgoda	57.95	47	10.3Millions	100%
06	Lankapura	100.4	20	18.3Millions	100%
07	Welikanda	43.5	14	7.6Millions	100%
Total		570.6	267	90.7Millions	-

5.1.6 Department of Divineguma Development .

Vision :-

To be a pioneer organization dedicated to ensure a prosperous Sri Lanka empowered and free from poverty by 2030

සමෘද්ධි සංවර්ධන
දෙපාර්තමේන්තුව
சமுத்திர அபிவிருத்தி திணைக்களம்
Department of Samurdhi Development



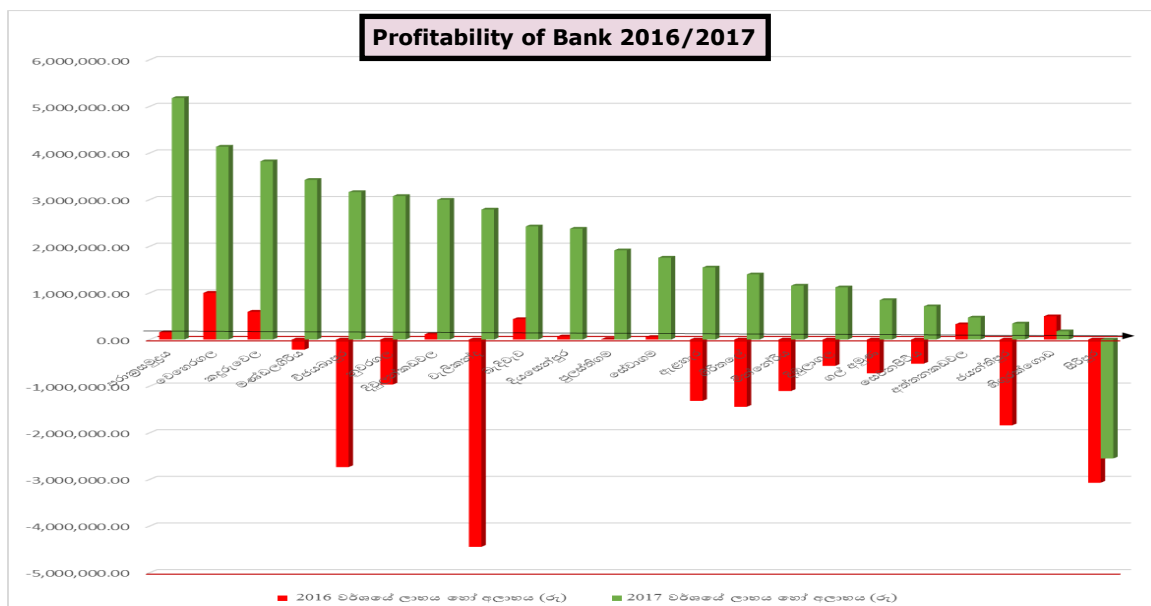
Mission :-

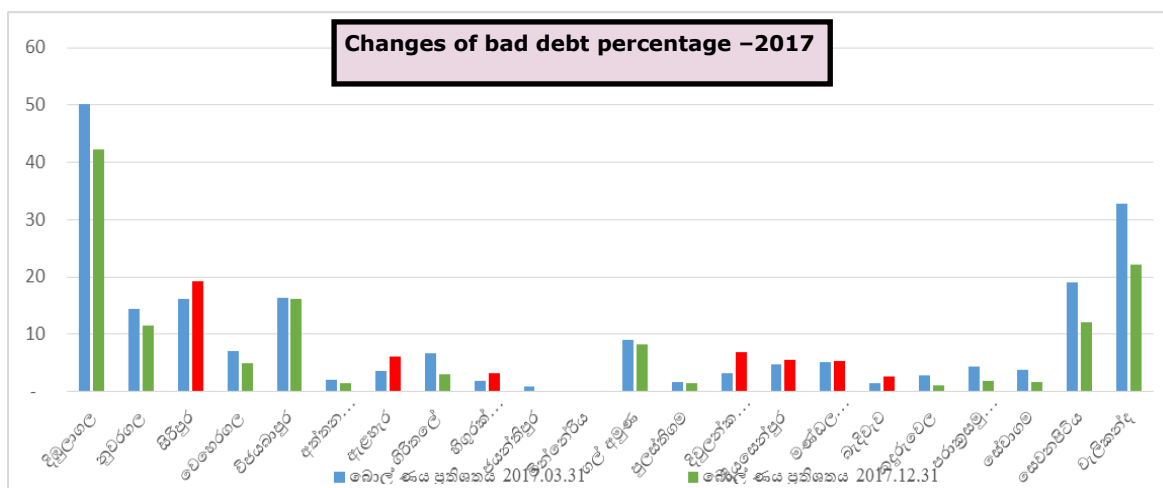
Contributing to the economic development through building up a prosperous nation free from poverty with the proper participation of departments, community based organizations, micro finance network, professionals, government, private, people and authorities to ensure the implementation of expedite, efficient and effective strategies to minimize the regional inequity and empower the community that economically, socially, politically, physically, mentally, legally, and environmentally disappointed.

Cost for Monthly Subsidy & Percentage of Subsidy Receivers

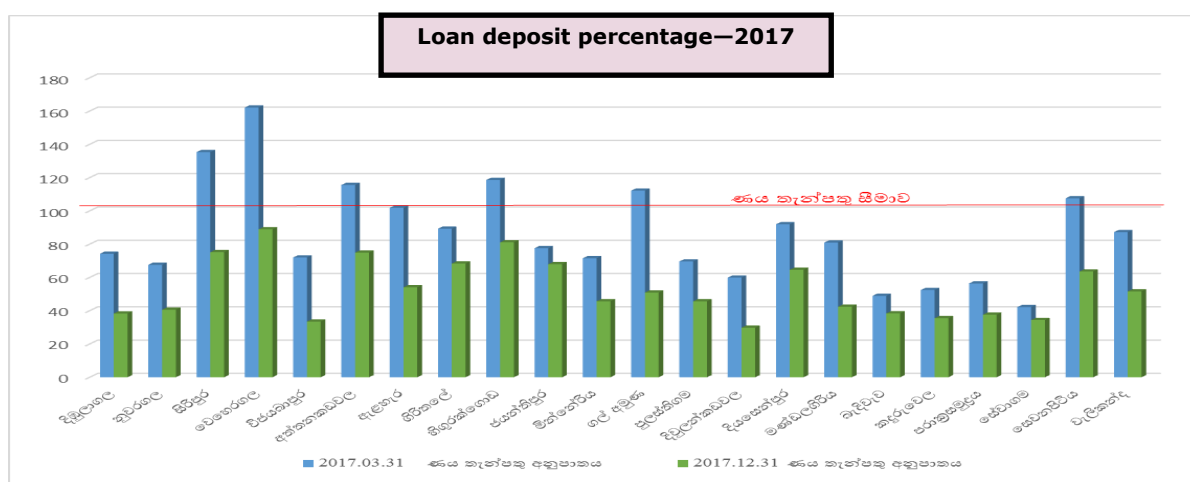
Divisional Secretariat	Percentage of Subsidy Receiving Families	Monthly Cost (Million Rupees)
Thamankaduwa	22%	11.52
Lankapura	29%	12.16
Welikanda	32%	11.25
Dimbulagala	21%	6.63
Medirigiriya	28%	6.3
Hingurakgoda	24%	6.59
Elahera	21%	9.18
Total	25%	63.63

District Progress of Samurdhi Programme of Bank Sector





Colour Shows the increase of bad debt percentage at the end of the year compared to the first quarter of 2017



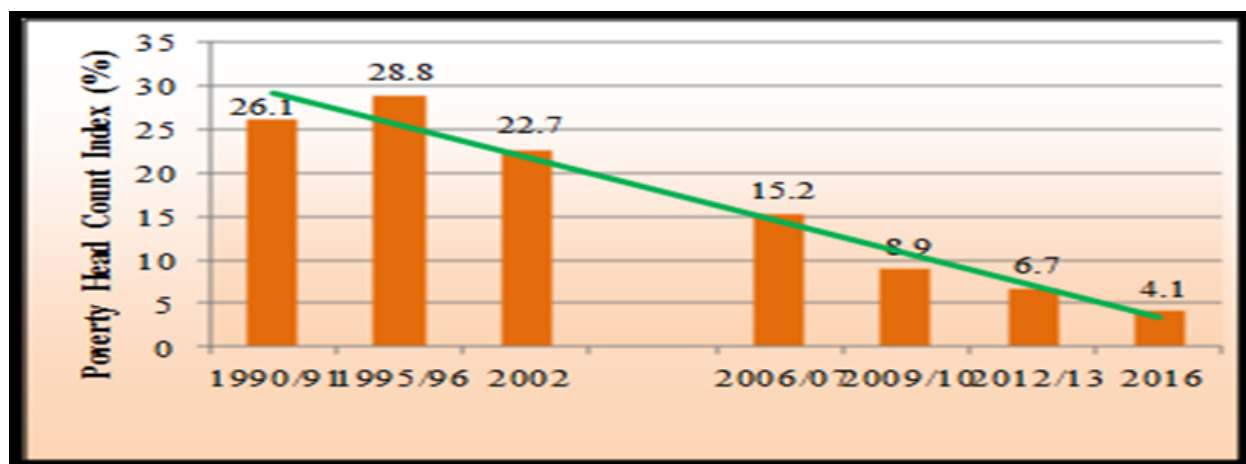
Investment Summary of Polonnaruwa District 31.12.2017

S. No	Invested Bank/Institute	Method of Investing		Total (Rs.)
		Treasury Bills (TB) (Rs.)	Fixed Deposits (FD) (Rs.)	
1	Bank of Ceylon (BOC)	67,568,482.40	346,439,624.00	414,008,106.40
2	People's Bank (PB)	77,102,638.28	433,081,334.18	510,183,972.46
3	National Savings Bank (NSB)	-	9,100,000.00	9,100,000.00
4	Rural Development Bank	42,114,062.81	333,588,042.47	375,702,105.28
5	Sri Lanka Savings Bank	-	12,500,000.00	12,500,000.00
6	State Mortgage & Investment Bank (SMIB)	6,379,500.00	-	6,379,500.00
7	Housing Development Financial Cooperation (HDFC)	41,314,600.00	34,200,000.00	75,514,600.00
8	Other -01	-	3,000,000.00	3,000,000.00
9	Other -02	-	-	-
10	Other -03	-	-	-
Total		234,479,283.49	1,171,909,000.65	1,406,388,284.14

Current situation of Poverty Line & Numbers of Polonnaruwa District

Total of the value of certain items required as basic needs of a man to survive for a period of one month ; and order of the line prepared for each district is considered as poverty line. Present value of it for the whole island is Rs: 4166/=. (2016)

Ratio of the population who are below the poverty line to whole population (Poverty Head Count Index) gives an idea of percentage of poor families live in a certain district. Present value of it is 4.1 (2016) (it was 6.7 in year 2012/2013)



(Source: Department of Census & Statistics -2016)

Project Items introduced in Year 2017 under Project Section

Serial No:	Project	Funds (Million Rupees)	Cost (Million Rupees)	Completed Projects	Percentage
1	Arunalu	10.58	9.75	280	92%
2	Model Villages	37.76	28.17	608	75%
3	Arunalu Special	4.00	1.27	52	30%
4	Mobile Vehicles	1.40	1.37	28	98%
5	Marketing Training	0.70	0.53	22	76%
6	Marketing Special	8.70	8.70	1	100%
7	House	5.60	1.88	27	33%
Total		68.74	51.67	1018	72%

Programmes implemented by Social Development Section during Year 2017

- “Singithi Asiri” Ruk Ropana programme
- Diriya Piyasa housing programme
- Drug Preventing, House Management and Happy Families
- Child Society and Cultural Programme
- Counseling programme

D:S: Division	Smoking / Drugs Pre- venting, Spiritual Develop- ment	Child Pro- tection	Counsel- ing and Career guidance	Interna- tional Women’s Day Com- memoratio ns	Diriya Piyasa Hous- ing Programme		Disabled Housing	Haritha Uyana	Women Empower- ment (Hela Bojunhal)	Total
	Happy Fam- ilies	Child Socie- ty cultural Programmes			Num- ber	Amount				
Thamankaduwa	45,000	31,500	24,000	18000	5	750,000	-	176,250	-	1,044,750
Dimbulagala	45,000	20,000	24,000	18000	4	600,000	-	60,000	-	767,000
Welikanda	45,000	20,000	24,000	18000	4	600,000	-	60,000	-	767,000
Hingurakgoda	45,000	24,000	24,000	18000	5	750,000	250,000	60,000	-	1,171,000
Elahera	45,000	24,000	24,000	18000	4	600,000	200,000	60,000	600,000	1,571,000
Medirigiriya	45,000	41,500	24,000	18000	5	650,000	-	60,000	-	838,500
Lankapura	45,000	20,000	24,000	18000	4	600,000	-	60,000	-	767,000
Total	315,000	181,000	168,000	126000	31	4,550,000	450,000	536,250	600,000	6,926,250

Financial Progress of Divisional Secretariats - 2017

Divisional Secre- tariat	Amount Issued	Expenditure	Balance	Percent- age %
Thamankaduwa	15,714,000.00	15,419,478.23	294,521.77	98.1
Dimbulagala	12,030,317.00	9,922,216.56	2,108,100.44	82.5
Lankapura	2,302,600.00	2,251,312.35	51,287.65	97.8
Elahera	4,040,335.00	3,968,306.20	72,028.80	98.2
Welikanda	2,598,100.00	2,568,096.74	30,003.26	98.8
Hingurakgoda	14,945,350.00	13,791,633.21	1,153,716.79	92.3
Medirigiriya	5,813,000.00	5,307,208.26	505,791.74	91.3
Total	57,443,702.00	53,228,251.55	4,215,450.45	94.1

5.1.7 Motor Traffic District Office .

Aim & Role:-

Committing to excellent motor traffic regulation and producing super drivers in Polonnaruwa district. Through executing modern technology and other rules and regulations in an optimum level for higher public appreciation and achieving the same.

Performances & Achievements in year 2017

Serial No:	Description	Total
1.	Written Test	6617
2.	Practical Test	3552
3.	No: of Temporary Driving Licenses	8059
4.	No: of Rejected	850
5.	Motor Cycle Registration	45
6.	Issuing of Number Plates	2861
7.	Issuance of Heavy Certificates	390
8.	Accident Inspections	590
9.	Transferring ownership of motor cycles	36
10.	Issuance of Identity Certificates	150
11.	Prohibition orders	49
12.	Total Revenue	රු: 33,327,075.00

Estimate & Description of Expenditure

Expenditure Head	Reason	Estimated Amount	Expenditure
307.02.01-1002	Overtime & Holiday Pay	316000.00	315908.00
307.02.01-1003	Other Allowances	12000.00	12000.00
307.02.01-1101	Local Travelling Expenses	15000.00	14860.00
307.02.01-1201	Stationary & Office Requirements	5000.00	4998.99
307.02.01-1302	Maintenance Cost (Plant/	35000.00	34998.47
307.02.01-1402	Post & Telecommunication	45000.00	38970.16
307.02.01-1403	Electricity & Water	303000.00	254985.95
307.02.01-1409	D.L. Written Test	105000.00	77545.00

5.1.8 Elections Branch

As scheduled in other years, registration of persons who are over 18 years of age and permanent residents in the district as voters and removing the names of persons from voters registry who have left the district by 01st of June and registering the names of the persons who have come to the district from other districts and carrying out all organizing activities and other procedures of declared elections are entrusted to elections branch in this year as well.

Accordingly, revision of voters registers were initiated from 01st June 2017 and in the process awareness programmes for Grama Niladharis were conducted at divisional secretariat level. Hence, necessary instructions were given to Grama Niladharis regarding the revision of electoral registries as per the guidelines given by the Commissioner of Elections. Then B.C. forms to be distributed among voters and other forms were issued to Grama Niladharis and B.C. returning date to the elections office was scheduled. Subsequently, duly completed B.C. forms were handed over to the Elections Office by Grama Niladharis on prescribed date and accordingly “a” names were omitted and “b” names were included in to the registry. Then opportunity was given to the voters to make appeals with in a prescribed period who could not register them selves at the time of completing B.C forms. Then applications were called from 10.08.2017 to 06.09.2017 and inquires were held regarding appeals and objections and qualified names were noted down to be included in voters registry and further actions were taken to verify the dual registrations and such names were omitted from one place and Mr. J. Jeniton certified the registry on 12.10.2017. Awareness programmes and propaganda campaigns were launched during June 2017 to make awareness among public regarding registration of voters. A demonstration march and a workshop was successfully conducted at Hingurakgoda town with the participation of high officials of Elections Commission including the chairman, government officers and school children. In terms of the strategic plan of Elections Commission, 48 workshops were successfully conducted to cover the whole district with the patronage of resource persons as per the instructions of Elections Commission. Primary objective of this programme was to include all the names that should be included in it. As an initiative for 2018 local government election data collection of officers were started by August 2017 and the election was declared on 27th November 2017 and from that day onwards election process was commenced for this year.

Number of voters as per division in terms of the voters registry 2017.

“a”	-	Minneriya	87113
“b”	-	Medirigiriya	80889
“c”	-	Polonnaruwa	153592

5.1.9 Land Use Policy Planning Section.

It has been informed that following duties are discharged by the department in terms of the gazette extra ordinary No: 4/21 of Democratic Socialist Republic of Sri Lanka in establishing Land Use Policy Planning Department.

- ♦ Preparation of legal background to implement the National Land Use Policy passed for Sri Lanka
- ♦ Preparation of National Land Use Plan
- ♦ Providing appropriate technical guidelines to utilize the limited land resources for the betterment of humans and so as to protect the environmental balance
- ♦ Issue of relevant recommendations and regulations to act upon the future stability of land resources in the development plans based on land resources
- ♦ Implementation of programmes to broaden the knowledge, training and study on scientific land use planning

Duties Performed in Year 2017 and Expenditure Report

Activity	Allocated Amount (Rs:)	Achieving the Target (Physical Progress)	Financial Progress
Less utilized home garden development programme under the programme of implementing recommendations of divisional plans (Thamankaduwa - Kalahagala new village)	50,000.00	100%	50,000.00
Less utilized home garden development programme under the programme of implementing recommendations of divisional plans (Medirigiriya-97 Wedikachchiya)	50,000.00	100%	50,000.00
Conducting awareness programmes on land use planning.	17,500.00	100%	17,500.00
Rural land use planning model programme		100%	
Hingurakgoda-Moragaswewa	50,000.00		50,000.00
Lankapura- Patunugama	50,000.00		49,975.00
Medirigiriya- Menikhorouwa	50,000.00		50,000.00
Elahera- Athragallewa	50,000.00		50,000.00
“Renaissance” environmental protection programme		100%	
Environmental protection near canal reservation of Lankapura-Parakkramasamudraya scheme.	489,500.00		474478.00
Medirigiriya under utilized development programme			
Tissapura	67,000.00		67,000.00
Wijayapura	61,000.00		61,000.00
Thamankaduwa-Unagalawehera	114,800.00		101,600.00
Hingurakgoda under utilized development programme	101,600.00		101,600.00
Total	1,151,400.00		1,123,153.00

5.1.10 Women's Affairs & Development Section

District Progress Women's Bureau of Sri Lanka						
Serial No:	Divisional Secretary's Division	Programms implemented over the funds of the Ministry		Progress		Programme Conducted Date
		Programme	Amount	Financial	Physical	
01	Elahera	Income generating motivation training programme	28,000.00	28,000.00	50	2017.05.29/30
		Prison Programme (Economically empowering Widowers' Chief house hold women)	50,000.00	50,000.00	01	2017.12.30
02	Welikanda	Income generating motivation training programme	28,000.00	27,500.00	46	2017.09.11/12
		Craft Training Programme	50,000.00	50,000.00	10	2017.10.26
		Awareness programme on preventing sexual & Gender Basis Tormenting	23,300.00	23,300.00	100	2017.10.24
		Prison Programme (Economically empowering Widowers' Chief house hold women)	20,000.00	20,000.00	02	2017.12.02
03	Lankapura	Income generating motivation training programme	28,000.00	28,000.00	50	2017.03.23/24
		Women's Productions	20,000.00	20,000.00	103	2017.09.11
04	Thamankaduwa	Women's Productions Exhibition & Fair	20,000.00	19,500.00	100	2017.10.25
05	Medirigiriya	Women's Productions Exhibition & Fair	20,000.00	20,000.00	18	2017.09.27
		Income generating motivation training programme	28,000.00	27,230.00	41	2017.10.23/24
		Prison Programme (Economically empowering Widowers' Chief house hold women)	50,000.00	50,000.00	01	2017.12.30

06	Hingurakgoda	Women's Productions Exhibition & Fair	20,000.00	20,000.00	50	2017.10.25
		Diriya Manpetha Programme (Poison Free Three Posha Production Programme)	365,000.00	365,000.00	50	2017.08.28
07	Dimbulagala	Economically Strengthening Women (Mushroom Cultivating Programme)	200,000.00	200,000.00	10	2017.12.22
		Prison Programme (Economically empowering Widowers' Chief house hold women)	10,000.00	10,000.00	01	2017.12.29
08	District Secretariat	Accounts Training District Programme	17,750.00	16,850.00	34	2017.04.06
		Programmes Parallel to Women's Day (Women's Day March)	25,000.00	25,000.00	250	2017.03.01
		Awareness programme for Women candidates of Local Government Election	85,000.00	76,510.00	100	2017.12.29
			1,088,050.00	1,076,890.00		

Serial No:	Divisional Secretary's Division	Programmes implemented over the funds of “Pibidumu Polonnaruwa		Progress		Programme Conducted Date
		Programme	Amount	Financial	Physical	
01	Medirigiriya	Multi Sectional action plan on Nutrition	30,500.00	30,400.00	54	2017.12.30
02	Thamankaduwa	Multi Sectional action plan on Nutrition	30,500.00	30,500.00	60	2017.11.27/28
03	Elahera	Multi Sectional action plan on Nutrition	30,500.00	30,391.00	60	2017.12.22
04	Welikanda	Multi Sectional action plan on Nutrition	30,500.00	30,490.00	30	2017.11.29/30
05	Dimbualgala	Multi Sectional action plan on Nutrition	30,500.00	30,459.00	84	2017.11.24
06	Hingurakgoda	Multi Sectional action plan on Nutrition	30,500.00	30,500.00	60	2017.11.24
07	Lankapura	Multi Sectional action plan on Nutrition	30,500.00	30,500.00	65	2017.11.24

Women's Production Exhibition & Fair



Awareness programme women election candidates & March



Beauty culture programme



Multi Section Nutrition Programme



5.1.11 District Planning Office .

Aim :-

Contribute to create a new Sri Lanka through transforming all the villages in Polonnaruwa district as reawakening and prosperous villages

Role :-

Uplifting the living status of rural communities by ensuring a complete development physically, economically and environmentally in rural sector through assuring decision making ability on villages' development of the district through community empowering

Development Field : Wild Life Conservation

S.N	Project	Division	Estimate	Expenditure as at 31.12.2017	Physical Progress	Implementing Agency
01	Renovation to Electric Fence at Karapola , Manampitiya	Welikanda	2,530,000.00	2,001,286.48	75%	Welikanda Divisional Secretariat
02	Purchasing electric fence maintaining equip-	Welikanda	940,000.00		85%	
Total			3,470,000.00	2,001,286.48		

Progress of the Projects implemented by district Secretariat under the provisions of other Ministries -2017

Serial No:	Programme	Ministry	Approved No: of Projects	No: of Projects Completed	Allocated Amount Million Rupees	Expenditure Million Rupees	Bills in Hand Million Rupees	Expenditure +Bills in Hand Million Rupees
01	Decentralized Budget Programme	Ministry of National Policy & Economic Affairs	489	487	52.62	34.76	17.08	51.84
02	Rural Infrastructure development Programme		382	382	147.04	117.62	29.18	146.80
03	World Food Programme		111	111	19.22	17.20	-	17.20
04	Special Programme on Infrastructure development		100	98	102.92	27.17	73.87	101.04
05	Religious Centre Development		25	25	11.40	10.26	1.140	11.40

Annual Performance and Accounts Report—2017 Polonnaruwa District

06	Development of Rural Play Grounds	Ministry of Sports	2	2	0.39	0.38	0	0.38
07	Housing Development & Drinking Water Project	Ministry of Prison Rehabilitation & Resettlement	45	45	36.10	26.47	9.63	36.10
08	School Computer Laboratory Development	Ministry of Telecommunication & Digital Infrastructure Development	9	9	3.74	3.44	0.29	3.73
09	Rural Economic Promotion Programme	Ministry of Rural Economy.	79	78	70.00	34.09	34.74	68.83
10	Reconciliation Targeted Economic Empowerment Project	Ministry of National Integration & Reconciliation	275	275	17.53	8.83	6.92	15.75
11	Road Development Programme	Ministry of City Planning & Water supply	3	3	2.51	2.41	0.02	2.43
12	Construction of District Secretariat Building	Ministry of Home Affairs	1	-	483.00	397.00	-	397.00
13	Construction of Nilasewana Offices	Ministry of Home Affairs	25	25	50.00	27.36	22.64	50.00
14	Mahaweli River Basin Programme—Agro Road Development Programme	Ministry of Mahaweli Development & Environment.	16	15	62.76	49.78	9.00	58.78
15	Construction of Samurdhi Banks	Department of Samurdhi Development.	4	-	16.85	16.85	-	16.85
16	Samurdhi Products Model Village Programme	Department of Samurdhi Development	624	624	37.72	26.44	-	26.44
17	Samurdhi Arunalu Small & Middle Scale Project	Department of Samurdhi Development	281	281	10.58	9.89	-	9.89
18	Diriya Piyasa Housing Programme	Department of Samurdhi Development	31	31	4.55	4.55	-	4.55
19	Grama Shakthi Programme	Presidential Secretariat	22	22	52.50	50.53	1.97	52.50
20	Implementation of National Programmes	Presidential Secretariat	4	4	28.59	28.45	-	28.45
21	Additional Food Crop Project	Presidential Secretariat	1	1	1.40	1.40	-	1.40
22	Distribution of Maize Seeds under Maize Project	Presidential Secretariat	2	2	22.00	22.00	-	22.00
23	Fruit village programme	Department of Agriculture	1	1	0.40	0.40	-	0.40
24	Distribution of seeds paddy free of charge for the farmers of Girithale & Kaudulla and green gram cultivation at stubble	Department of Agriculture	2	2	60.84	60.84	-	60.84
Total			2534	2523	1294.66	978.12	206.48	1184.60

5.1.12 Small Enterprises Development Section .

Vision:-

Entrepreneurship and Enterprise Development for sustainable growth.

Mission:-

- ♦ Provide maximum contribution for the National Development in Sri Lanka.
- ♦ Motivate unemployed youth to access field of enterprises
- ♦ Enhance entrepreneurial capabilities in youth
- ♦ Improve efficiency and productivity of enterprises
- ♦ Provide supportive services for development of enterprises

Objectives:-

- To create “Local Entrepreneurial Culture” through the development of entrepreneurial capabilities in youth
- To generate job opportunities and uplift living standards of youth through identification of new enterprise opportunities and guide to start enterprises
- To generate more job opportunities and increase income level in youth through improving the efficiency and productivity of youth’s enterprises.
- To provide active contribution to ensure the effectiveness and consistency of micro and small enterprises

Role :-

- Generate entrepreneurship qualities among youth
- Creating background in the country to promote Entrepreneurial culture
- Continuous conduction of entrepreneurship skill development programmes.
- Assisting youth for enterprise planning
- Assisting in increasing quality of products & services
- Conducting researches on small enterprises & based on such fields
- Assisting in applying modern technology to small enterprises
- Assisting in promoting brand names of entrepreneurs
- Providing business advisory services.
- Introducing electronic trade opportunities.
- Providing financial assistance for business development
- Providing market facilities for products and services of small entrepreneurs
- Networking of entrepreneurs by building entrepreneurs federations & parties
- Evaluating & awarding of successful entrepreneurs.

Annual progress of General Programmes -2017

S. No	Programme	Annual Target	No. of Pro-grammes Conducted	Pro- gress Achieved %	Cost
Awareness on Entrepreneurship Skill Development & Attitude Development					
01	Special Awareness	01	01	100	4,092.00
02	Ordinary Awareness	10	04	40	
03	Awareness programme for officers.	01	02	100	51,420.00
Entrepreneurship Development					
04	“Wiyaparayata Maga” Programme	04	02	50	34,250.00
05	Field Visits (Exchange of Experiences)	02	02	100	45,415.00
Technical Development					
06	Individual Training	05	04	80	13,250.00
Marketing Development					
07	Marketing Development Training Programme	01	01	100	20,950.00
08	Customer Care Programme	01	02	100	45,015.00
09	Marketing Facility Providing Programme	01	01	100	33,800.00
10	Packaging Programme	01	01	100	10,020.00
11	Trade Exhibition Programme	02	02	100	880,832.94
Business Laws & Regulations.					
12	Awareness on Business Laws & Regulations	01	01	100	12,420.00
Costing & Accounting					
13	General Accounting Programme	01	01	100	34,440.00
Reviews & Projects Inspections					
14	Reviews	05	03	60	15,930.00
15	Projects Inspections	06	02	30	27,425.00
16	Youth Camp Programme	-	01	100	29,500.00
17	Entrepreneurship Development District Committee	-	01	100	24,500.00
18	Entrepreneur - 2017 Direction Programme	-	01	100	6,704.00
19	Officer Progress Programme	-	01	100	6,790.00
20	Administrative Cost	-	-	-	18,000.00
	Total	42	33	58	1,314,753.94

“Pulathisi Viyawasaya” - 2017 Trade Exhibition



Annual Progress 2017 on SED salon project

S. No	Programme	Annual Target	No. of Programmes Conducted	Progress Achieved %	Cost
	Entrepreneurship Development				
01	Sed Saloon reorganization		01	100	6,430.00
	Technical Programme				
02	NVQ Programme	01	01	100	12,870.00
03	Standardization Programme	01	01	100	43,080.00
	Marketing Programme				
04	Business Page preparation programme	01	01	100	17,850.00
	Review & project inspection				
05	Project Inspection	01	03	100	85,770.00
	Total	04	07	100	166,000.00



Annual Progress on “Swashakthi” Loan Programme -2017

S. No	Programme	Annual Target	No. of Programmes Conducted	Progress Achieved %	Cost
	Awareness & Attitude Development				
01	General Awareness (One Day)	05	06	100	18,480.00
	Business Concept Generation & Selection				
02	One Day programme on Generation of Business Ideas & Selection of opportunities	04	01	25	9,150.00
	Business Plan Development				
03	Designing of Business Plans (02 day)	13	13	100	284,320.00
	Costing & Accounting				
04	Finance Literacy Programme	01	01	100	14,056.56
	Reviews & Project Inspection				
05	Project Inspection (03Day)	08	06	80	105,700.00
	Total	31	27	81	431,706.56



Special Project under “Rajarata Navodaya” Presidential Programme

Project	No. of Beneficiaries	Amount Allocated (Rs.)	Total Expenditure (Rs.)	Equipment Granted and quantity.
Development of PUN associated industry.	13	1,040,000.00	966,495.00	PUN Weaving Wooden Machines 04 Saucepan Sets - 13 PUN Cutting Scissors - 26 High Speed Sewing Machines - 13

Main Performance Indicators

◆ No. of new businesses initiated	27
◆ Development of presently running businesses	21
◆ Providing Advisory Services	20
◆ Coordination for business finance	15
◆ No. of Loan facilities provided	05
◆ Loan Grants (Banks)	Rs. 7,000,000.00
◆ Loan Grants (Federations)	Rs. 551,000.00

Small Enterprises Development Division - Polonnaruwa Expenditure Details for December -2017

Description	Amount Allocated (Rs.)	Total Expenditure (Rs)	Balance (Rs)
Training Programmes	1,991,000.00	1,967,992.05	23,007.05
Travelling Expenses (Local)	39,000.00	39,000.00	-
Post & Telecommunication	48,000.00	45,249.76	2,750.24
Water & Electricity	35,500.00	34,759.00	741.00
Other - Miscellaneous	25,000.00	23,905.00	1,095.00
Stationary & Office Needs	45,500.00	44,750.00	750.00

5.1.13 Carrier Guidance Section .

Vision : World class Sri Lankan work force

Mission :- Development of a globally competitive work force and use the full potential of our human resources for the socio economic development of Sri Lanka.

District :Polonnaruwa

AL = Allocations ,T = Target , P = Progress, V = Value, % = Percentage

Programme	Physical Progress			Financial Progress			No: of Beneficiaries			Job Placement	
	T	P		AL	P		T	P		Direct Job Placement	Entrepreneur/Self Employment
		V	%		V	%		V	%		
Job Creation & Promotion											
Entrepreneurship Development Training											
Job club Programme											
100 Divisional Jobs Programme											
Need Based Training											
Garden Mamageent											
Career Guidance											
Awareness for O/L Students											
Awareness for A/L Students											
Motivation for Self-employment	1	6	600	2390	2390	100%	30	700			
Winning Career Challenges											
Graduate Programme	1	1	100	34450	34450	100%	40	38	95%		
Awareness for Teachers											
Awareness for Parents	1	4	400	2520	1280	51%					
Providing Career Guidance							120	660	550%		
Direction for vocational training											
Other Programmes											
Programme for people who are at risk	8	11	138%								
Improving Career Performance							30	160	533%		
Total				39360	38120						

District: Polonnaruwa

Job Placement Summary

Location	Registration of job Seekers		Registration of Vacancies		Direction for interviews.		Job Placement				Awareness programmes for Job Seekers.	
	T	A	T	A	T	A	T	A	T	A	T	A
District Secretariat		390		273		275		81			1	1
Thamankaduwa Divisional Secretariat	765	52		10		20	30	1	10	9		
Dimbulagala Divisional Secretariat	616	205		20		150	30	15	10	43		2
Welikanda Divisional Secretariat	305	324		94		141	30	10	10	6		4
Elahera Divisional Secretariat	414	64				10	30	5	10	5		1
Hingurakgoda Divisional Secretariat	608	265		22		100	30	17	10	75		5
Medirigiriya Divisional Secretariat	612											
Lankapura Divisional Secretariat	329											
Total	3649	1300		419		696	150	129	50	138	1	13



5.2 Duties Performed by Divisional Secretariats

5.2.1. Registrations

Medirigiriya Divisional Secretariat .

		New Registrations				Issue of copies		
		Births	Birth Certificate Revisions	Marriage	Deaths	Births	Marriage	Deaths
(a)	Activities as at 01.01.2017	-	-	-	-	-	-	-
(b)	Applications Received during year 2017	911	48	462	287	9666	1657	574
(c)	Total No: of applications to work with (a+b) i	911	48	462	287	9666	1657	574
(d)	Applications worked out in 2017	911	48	462	287	9666	1657	574
(e)	Remained applications without an action as at 31.12.2017 (c+e)	-	-	-	-	-	-	-

Lankapura Divisional Secretariat

		New Registrations				Issue of copies		
		Births	Birth Certificate Revisions	Marriage	Deaths	Births	Marriage	Deaths
(a)	Activities as at 01.01.2017	-	-	-	-	-	-	-
(b)	Applications Received during year 2017	-	-	-	-	-	-	-
(c)	Total No: of applications to work with (a+b) i	-	-	-	-	-	-	-
(d)	Applications worked out in 2017	06	19	140	82	4115	508	190
(e)	Remained applications without an action as at 31.12.2017 (c+e)	-	-	-	-	-	-	-

Hingurakgoda Divisional Secretariat

		New Registrations				Issue of copies		
		Births	Birth Certificate Revisions	Marriage	Deaths	Births	Marriage	Deaths
(a)	Activities as at 01.01.2017	-	-	-	-	-	-	-
(b)	Applications Received during year 2017	20	84	549	199	4297	947	438
(c)	Total No: of applications to work with (a+b) i	20	84	549	199	4297	947	438
(d)	Applications worked out in 2017	20	84	549	199	4297	947	438
(e)	Remained applications without an action as at 31.12.2017 (c+e)	-	-	-	-	-	-	-

Thamankaduwa Divisional Secretariat .

		New Registrations				Issue of copies		
		Births	Birth Certificate Revisions	Marriage	Deaths	Births	Marriage	Deaths
(a)	Activities as at 01.01.2017	-	-	-	-	-	-	-
(b)	Applications Received during year 2017	6074	710	1024	1354	39189	2407	1756
(c)	Total No: of applications to work with (a+b) i	-	-	-	-	-	-	-
(d)	Applications worked out in 2017	6074	710	1024	1354	39189	2407	1756
(e)	Remained applications without an action as at 31.12.2017 (c+e)	-	-	-	-	-	-	-

Dimbulagala Divisional Secretariat

		New Registrations				Issue of copies		
		Births	Birth Certificate Revisions	Marriage	Deaths	Births	Marriage	Deaths
(a)	Activities as at 01.01.2017	0	0	0	0	0	0	0
(b)	Applications Received during year 2017	23	31	838	188	4671	1043	163
(c)	Total No: of applications to work with (a+b) i	0	0	0	0	0	0	0
(d)	Applications worked out in 2017	23	31	838	188	4671	1043	163
(e)	Remained applications without an action as at 31.12.2017 (c+e)	0	0	0	0	0	0	0

Welikanda Divisional Secretariat

		New Registrations				Issue of copies		
		Births	Birth Certificate Revisions	Marriage	Deaths	Births	Marriage	Deaths
(a)	Activities as at 01.01.2017	-	-	-	-	-	-	-
(b)	Applications Received during year 2017	16	-	159	94	1767	107	50
(c)	Total No: of applications to work with (a+b) i	16	-	159	94	1767	107	50
(d)	Applications worked out in 2017	16	-	159	94	1767	107	50
(e)	Remained applications without an action as at 31.12.2017 (c+e)	-	-	-	-	-	-	-

Elahera Divisional Secretariat

		New Registrations				Issue of copies		
		Births	Birth Certificate Revisions	Marriage	Deaths	Births	Marriage	Deaths
(a)	Activities as at 01.01.2017	-	-	-	-	-	-	-
(b)	Applications Received during year 2017	44	46	567	4758	4053	624	152
(c)	Total No: of applications to work with (a+b) i	44	46	567	475	4055	624	152
(d)	Applications worked out in 2017	44	46	267	175	4055	624	152
(e)	Remained applications without an action as at 31.12.2017 (c+e)	-	-	-	-	-	-	-

5.2.2 Other Licenses**Medirigiriya Divisional Secretariat**

		Registration of Persons	Passports	Timber License	Sand Rock License	Excise License	Fire Arm Recommendations
(a)	No: of applications to work with as at 01.01.2017	-	-	-	-	-	-
(b)	Applications Received during year 2017	2837	-	30	1072	06	04
(c)	Total No: of applications to work with (a+b)	2837	-	30	1072	06	04
(d)	Applications worked out in 2017	2837	-	30	1072	06	04
(e)	Remained applications without an action as at 31.12.2017	232 Received by Mobile Service	-	-	-	-	-
(f)	Grant of Land Permits - 2017	172					

Lankapura Divisional Secretariat

		Registration of Persons	Passports	Timber License	Sand Rock License		Excise License	Fire Arm Recommendations
					Sand	Soil		
(a)	No: of applications to work with as at 01.01.2017	20	-	-	-	-	-	-
(b)	Applications Received during year 2017	1030	-	64	60	38	-	-
(c)	Total No: of applications to work with (a+b)	1050	-	64	60	38	-	-
(d)	Applications worked out in 2017	962	-	64	60	38	-	-
(e)	Remained applications without an action as at 31.12.2017	88	-	-	-	-	-	-
(f)	Grant of Land Permits - 2017 -08	-	-	-	-	-	-	-

Hingurakgodu Divisional Secretariat

		Registration of Persons	Passports	Timber License	Sand Rock License	Excise License	Fire Arm Recommendations
(a)	No: of applications to work with as at 01.01.2017	79	-	-	-	-	-
(b)	Applications Received during year 2017	2325	-	64	-	11	15
(c)	Total No: of applications to work with (a+b)	2404	-	64	-	11	15
(d)	Applications worked out in 2017	2183	-	57	-	11	15
(e)	Remained applications without an action as at 31.12.2017	221	-	06	-	-	-
(f)	Grant of Land Permits - 2017	266	-	-	-	-	-

Thamankaduwa Divisional Secretariat

		Registration of Persons	Passports	Timber License	Sand Rock License	Excise License	Fire Arm Recommendations	Grant of Land Permits
(a)	No: of applications to work with as at 01.01.2017	-	-	35	13	37	90	-
(b)	Applications Received during year 2017	-	-	35	13	37	90	1103
(c)	Total No: of applications to work with (a+b)	-	-	35	13	37	90	1103
(d)	Applications worked out in 2017	-	-	-	-	-	-	753
(e)	Remained applications without an action as at 31.12.2017	-	-	-	-	-	-	350
(f)	Grant of Land Permits - 2017	-	-	-	-	-	-	105

Dimbulagala Divisional Secretariat

		Registration of Persons	Passports	Timber License	Sand Rock License	Excise License	Fire Arm Recommendations
(a)	No: of applications to work with as at 01.01.2017	0	0	0	0	0	0
(b)	Applications Received during year 2017	2827	300	82	482	4	9
(c)	Total No: of applications to work with (a+b)	2827	0	82	482	4	9
(d)	Applications worked out in 2017	2827	214	82	482	4	9
(e)	Remained applications without an action as at 31.12.2017	110	86	0	0	0	0
(f)	Grant of Land Permits - 2017	0	0	0	0	0	0

Welikanda Divisional Secretariat

		Registration of Persons	Pass-ports	Timber License	Sand Rock License	Excise License	Fire Arm Recommendations
(a)	No: of applications to work with as at 01.01.2017	-	-	-	-	-	-
(b)	Applications Received during year 2017	1654	-	31	328	03	-
(c)	Total No: of applications to work with (a+b)	1654	-	31	328	03	-
(d)	Applications worked out in 2017	1654	-	31	328	03	-
(e)	Remained applications without an action as at 31.12.2017	-	-	-	-	-	-
(f)	Grant of Land Permits - 2017	-	-	-	-	-	-

Elaheera Divisional Secretariat

		Registration of Persons	Pass-ports	Timber License	Sand Rock License	Excise License	Fire Arm Recommendations	Grant of Land Permits
(a)	No: of applications to work with as at 01.01.2017	30	-	-	-	-	-	-
(b)	Applications Received during year 2017	3161	-	180	144	4	-	-
(c)	Total No: of applications to work with (a+b)	3191	-	-	-	4	-	-
(d)	Applications worked out in 2017	2551	-	170	44	4	-	-
(e)	Remained applications without an action as at 31.12.2017	610	-	10	-	-	-	-
(f)	Grant of Land Permits - 2017	-	-	-	-	-	-	-

5.2.3 Samurdhi, Social Service & Disaster Relief**Medirigiriya Divisional Secretariat**

	Total No of Subsidy issued	No: of beneficiary families	Total No: of beneficiaries
Dry Ration Subsidy	-	-	-
Nutritious	11159	1081	10872
Samurdhi	5174	5174	5174
Flood Assistance	-	-	-
Drought Assistance	-	5111	5111
Housing Assistance	-	47	47
Glass of Milk programme			2020

Lankapura Divisional Secretariat

	Total No of Subsidy issued	No: of beneficiary families	Total No: of beneficiaries
Dry Ration Subsidy	-	-	-
Nutritious	700	700	700
Samurdhi	3284	3284	3284
Flood Assistance	-	-	-
Drought Assistance	-	-	-
Housing Assistance (Disaster)	Amount Rs..994000.00	23	85
Glass of Milk programme	-	-	-

Hingurakgoda Divisional Secretariat

	Total No of Subsidy issued	No: of beneficiary families	Total No: of beneficiaries
Dry Ration Subsidy	-	886	2604
Nutritious	1107	1107	1107
Samurdhi	-	-	-
Flood Assistance	-	-	-
Drought Assistance	-	-	-
Housing Assistance (Disaster)	-	06	19
Glass of Milk programme	-	359	-

Thamankaduwa Divisional Secretariat

	Total No of Subsidy issued	No: of beneficiary families	Total No: of beneficiaries
Dry Ration Subsidy	-	522	2088
Nutritious	-	-	-
Samurdhi	56820	4735	4735
Flood Assistance	-	-	-
Drought Assistance	-	1150	3943
Housing Assistance (Disaster)	-	-	319
Glass of Milk programme	-	-	-

Dimbulagala Divisional Secretariat

	Total No of Subsidy issued	No: of beneficiary families	Total No: of beneficiaries
Dry Ration Subsidy	-	15705	54950
Nutritious	2120	2120	2120
Samurdhi	4622	4622	4622
Flood Assistance	-	-	-
Drought Assistance	-	-	-
Housing Assistance (Disaster)	-	-	-
Glass of Milk programme	-	-	-

Welikanda Divisional Secretariat

	Total No of Subsidy issued	No: of beneficiary families	Total No: of beneficiaries
Dry Ration Subsidy	-	-	-
Nutritious	972	972	972
Samurdhi	2985	2985	2985
Flood Assistance	-	-	-
Drought Assistance	-	5252	17907
Housing Assistance (Disaster)	-	22	71
Glass of Milk programme	-	21	375

Elahera Divisional Secretariat

	Total No of Subsidy issued	No: of beneficiary families	Total No: of beneficiaries
Dry Ration Subsidy	8927	2233	2233
Nutritious	771	771	771
Samurdhi	2570	2570	2570
Flood Assistance	-	-	-
Drought Assistance	-	-	-
Housing Assistance (Disaster)	-	12	12
Glass of Milk programme	-	-	-

5.2.4 Business Names Registration.**Medirigiriya Divisional Secretariat**

No: of business names registered during the year	209
Total amount of revenue collected in respect of the subject Rs:	115,900.00

Lankapura Divisional Secretariat

No: of business names registered during the year	110
Total amount of revenue collected in respect of the subject Rs:	60,500.00
Business Names amendments (06)	1,740.00

Hingurakgoda Divisional Secretariat

No: of business names registered during the year	177
Total amount of revenue collected in respect of the subject Rs:	143,982.00

Thamankaduwa Divisional Secretariat

No: of business names registered during the year	307
Total amount of revenue collected in respect of the subject Rs:	162,880

Dimbulagala Divisional Secretariat

No: of business names registered during the year	178
Total amount of revenue collected in respect of the subject Rs:	98,375.00

Welikanda Divisional Secretariat

No: of business names registered during the year	118
Total amount of revenue collected in respect of the subject Rs:	59000.00

Elahera Divisional Secretariat

	New	Amend-ments
No: of business names registered during the year	64	6
Total amount of revenue collected in respect of the subject Rs:	32000.00	1500.00

5.2.5 Electricity Objections**Medirigiriya Divisional Secretariat**

No: of electricity objections received during the year	-
Number of disputes solved	-

Lankapura Divisional Secretariat

No: of electricity objections received during the year	-
Number of disputes solved	-

Hingurakgoda Divisional Secretariat

No: of electricity objections received during the year	06
Number of disputes solved	06

Thamankaduwa Divisional Secretariat

No: of electricity objections received during the year	-
Number of disputes solved	-

Dimbulagala Divisional Secretariat

No: of electricity objections received during the year	no
Number of disputes solved	

Welikanda Divisional Secretariat

No: of electricity objections received during the year	-
Number of disputes solved	-

Elahera Divisional Secretariat

No: of electricity objections received during the year	1
Number of disputes solved	1

5.2.6 Issue of Vehicle Revenue License

Medirigiriya Divisional Secretariat

No: of revenue license issued during the year	15762
Revenue over the same	24,379,407.00

Lankapura Divisional Secretariat

No: of revenue license issued during the year	10498
Revenue over the same	16059456.00

Hingurakgoda Divisional Secretariat

No: of revenue license issued during the year	17323
Revenue over the same	31723930.50

Thamankaduwa Divisional Secretariat

No: of revenue license issued during the year	24919
Revenue over the same	51800767.00

Dimbulagala Divisional Secretariat

No: of revenue license issued during the year	19482
Revenue over the same	30,281,083.17

Welikanda Divisional Secretariat

No: of revenue license issued during the year	6838
Revenue over the same	9,872,954.00

Elaheera Divisional Secretariat

No: of revenue license issued during the year	9,685
Revenue over the same	15,070,174.79

5.2.7 Activities related to Elders

Medirigiriya Divisional Secretariat

	Number	No: of Beneficiaries
Elders committees Established	01	95
Elders Day Care Centers	01	60
Elders homes that are monitored	-	-
Counseling Centers	-	-

Lankapura Divisional Secretariat

	Number	No: of Beneficiaries
Elders committees Established	21	1050
Elders Day Care Centers	01	50
Elders homes that are monitored	-	-
Counseling Centers	-	-

Hingurakgoda Divisional Secretariat

	Number	No: of Beneficiaries
Elders committees Established	-	-
Elders Day Care Centers	-	-
Elders homes that are monitored	-	-
Counseling Centers	-	-

Thamankaduwa Divisional Secretariat

	Number	No: of Beneficiaries
Elders committees Established	02	68
Elders Day Care Centers	-	-
Elders homes that are monitored	01	18
Counseling Centers	-	-

Dimbulagala Divisional Secretariat

	Number	No: of Beneficiaries
Elders committees Established	2	107
Elders Day Care Centers	0	0
Elders homes that are monitored	0	0
Counseling Centers	0	0

Welikanda Divisional Secretariat

	Number	No: of Beneficiaries
Elders committees Established	29	1650
Elders Day Care Centers	-	-
Elders homes that are monitored	-	-
Counseling Centers	-	-

Elahera Divisional Secretariat

	Number	No: of Beneficiaries
Elders committees Established	30	2104
Elders Day Care Centers	1	80
Elders homes that are monitored	-	-
Counseling Centers	-	-

5.2.8 Activities related to Children

Medirigiriya Divisional Secretariat

No: of Early childhood programmes conducted through Children's Secretariat	09
No: of participants	796

Lankapura Divisional Secretariat

No: of Early childhood programmes conducted through Children's Secretariat	09
No: of participants	741

Hingurakgoda Divisional Secretariat

No: of Early childhood programmes conducted through Children's Secretariat	19
No: of participants	945

Thamankaduwa Divisional Secretariat

No: of Early childhood programmes conducted through Children's Secretariat	16
No: of participants	1007

Dimbulagala Divisional Secretariat

No: of Early childhood programmes conducted through Children's Secretariat	12
No: of participants	967

Welikanda Divisional Secretariat

No: of Early childhood programmes conducted through Children's Secretariat	52
No: of participants	2860

Elahera Divisional Secretariat

No: of Early childhood programmes conducted through Children's Secretariat	12
No: of participants	2009

5.2.9 Disabled Rehabilitation

Elahera Divisional Secretariat	
No: of Grama Niladhari Wards that Disabled Rehabilitation programme was implemented	28
No of disables that pairs of spectacles were provided	-
No of disables that hearing aids were provided	5
No of disables that wheel chairs were provided	20
No of disables that housing subsidies were provided	18
No of disables that crutches were provided	24
No of disabled children that were directed for education	1

Lankapura Divisional Secretariat	
No: of Grama Niladhari Wards that Disabled Rehabilitation programme was implemented	28
No of disables that pairs of spectacles were provided	04
No of disables that hearing aids were provided	04
No of disables that wheel chairs were provided	07
No of disables that housing subsidies were provided	10
No of disables that crutches were provided	08

Hingurakgoda Divisional Secretariat	
No: of Grama Niladhari Wards that Disabled Rehabilitation programme was implemented	53
No of disables that pairs of spectacles were provided	140
No of disables that hearing aids were provided	13
No of disables that wheel chairs were provided	12
No of disables that housing subsidies were provided	05
No of disables that crutches were provided	04
No of disabled children that were directed for education	07

Thamnkaduwa Divisional Secretariat	
No: of Grama Niladhari Wards that Disabled Rehabilitation programme was implemented	-
No of disables that pairs of spectacles were provided	-
No of disables that hearing aids were provided	105
No of disables that wheel chairs were provided	20
No of disables that housing subsidies were provided	08
No of disables that crutches were provided	10
No of disabled children that were directed for education	03

Dimbulagala Divisional Secretariat

No: of Grama Niladhari Wards that Disabled Rehabilitation programme was implemented	56
No of disables that pairs of spectacles were provided	320
No of disables that hearing aids were provided	6
No of disables that wheel chairs were provided	9
No of disables that housing subsidies were provided	5
No of disables that crutches were provided	11
No of disabled children that were directed for education	2

Welikanda Divisional Secretariat

No: of Grama Niladhari Wards that Disabled Rehabilitation programme was implemented	29
No of disables that pairs of spectacles were provided	-
No of disables that hearing aids were provided	01
No of disables that wheel chairs were provided	06
No of disables that housing subsidies were provided	-
No of disables that crutches were provided	11
No of disabled children that were directed for education	01

Medirigiriya Divisional Secretariat

No: of Grama Niladhari Wards that Disabled Rehabilitation programme was implemented	40
No of disables that pairs of spectacles were provided	263
No of disables that hearing aids were provided	02
No of disables that wheel chairs were provided	14
No of disables that housing subsidies were provided	-
No of disables that crutches were provided	06
No of disabled children that were directed for education	03

5.2.10.Advance issued under Government Officer's Advance Account -2017**Medirigiriya Divisional Secretariat**

Type of Loan/ Advance	No: of Officers	Amount Issued (Rs.)
Festival	45	450,000.00
Special	30	120,000.00
Distress	19	2,323,380.00
Vehicle	-	-
Motor Cycle	-	-
Property	-	-
Other	01	106,620.00
Total	95	3,000,000.00

Lankapura Divisional Secretariat

Type of Loan/ Advance	No: of Officers	Amount Issued (Rs.)
Festival	44	440000.00
Special	25	100000.00
Distress	32	2432885.00
Vehicle		
Motor Cycle		
Property		
Other		
Total		2972885.00

Hingurakgoda Divisional Secretariat

Type of Loan/ Advance	No: of Officers	Amount Issued (Rs.)
Festival	56	560,000.00
Special	43	172,000.00
Distress	31	3,179,292.00
Vehicle	-	-
Motor Cycle	-	-
Property	-	-
Other	-	-
Total	130	3,911,292.00

Thamankaduwa Divisional Secretariat

Type of Loan/ Advance	No: of Officers	Amount Issued (Rs.)
Festival	59	590,000.00
Special	29	116,000.00
Distress	48	4,982,740.00
Vehicle	-	-
Motor Cycle	-	-
Property	-	-
Other	-	-
Total	136	5,688,740.00

Dimbulagala Divisional Secretariat

Type of Loan/ Advance	No: of Officers	Amount Issued (Rs.)
Festival	54	540,000.00
Special	29	116,000.00
Distress	35	3,488,000.00
Vehicle	1	6,000.00
Motor Cycle	0	-
Property	0	-
Other	0	-
Total	122	4,150,000.00

Welikanda Divisional Secretariat

Type of Loan/ Advance	No: of Officers	Amount Issued (Rs.)
Festival	28	280000.00
Special	13	52000.00
Distress	16	2018000.00
Vehicle	-	-
Motor Cycle	-	-
Property	-	-
Other	-	-
Total	-	2350000.00

Elahera Divisional Secretariat

Type of Loan/ Advance	No: of Officers	Amount Issued (Rs.)
Festival	40	400,000.00
Special	32	128,000.00
Distress	28	2,725,930.00
Vehicle	-	-
Motor Cycle	-	-
Property	-	-
Other	-	-
Total		3,253,930

5.2.11 Details on Religious and Cultural Activities

Divisional Secretariat– Elahera

Details of completed projects given directly to divisional secretary by other ministries and departments except Ministry of Economic Development. .

Project	Allocated Amount (Rs.)	Beneficiaries
Completion of remaining work of Sri Agbo Daham School building ,Kottapitiya	200,000.00	36 Students
Completion of remaining work of Sanghawasa of Sri Poorwarama Temple Samagipura	300,000.00	180 Fami-

Divisional Secretariat-Lankapura

Project	Allocated Amount (Rs.)	Details of beneficiaries
Construction of an adjoining room to Sanghawasa of Sri Damitharamaya , Nelumpura	200,000.00	200

Divisional Secretariat—Hingurakgoda

Details of completed projects given directly to divisional secretary by other ministries and departments except Ministry of Economic Development

Project	Allocated Amount (Rs.)	Details of beneficiaries
For Daham school building of Jayamaga Piriwena	200,000.00	800
For completion of remaining work of Mahasen Raja Maha Vihara Daham School building and obtaining equipment	200,000.00	480
For Daham school building of Sri Sumangalarama	200,000.00	350
For Daham school building of Sri Neegraramaya	200,000.00	200
For Daham school equipment for Chethiyagiri Purana Raja Maha Viharaya	100,000.00	185
For building renovations of Sri Abhinawaramaya	300,000.00	125
For toilet system of Sri Jinaraja Temple	150,000.00	443

Divisional Secretariat—Welikanda

Details of completed projects given directly to divisional secretary by other ministries and departments except Ministry of Economic Development

Project	Allocated Amount (Rs.)	Details of beneficiaries
Construction of Sanghawasa building at Sri Perakum Vi-	300,000.00	01
Construction of Toilet System at Redee viharaya , Redee Pokuna	150,000.00	01

Divisional Secretariat—Thamankaduwa

Details of completed projects given directly to divisional secretary by other ministries and departments except Ministry of Economic Development

Project	Allocated Amount (Rs.)	Details of beneficiaries
Construction of a Daham School building	200,000.00	Sri Pragghgha Visuddhi Daham School, Galthabarawa, Nissankamallapura, Polonnaruwa
Construction of a Daham School building	200,000.00	Sri Thakshila Daham School, Sri Keththarama Temple , Wewethenna, Polonnaruwa

Divisional Secretariat—Dimbulagala

Details of completed projects given directly to divisional secretary by other ministries and departments except Ministry of Economic Development

Project	Allocated Amount (Rs.)
For the building of Sri Sangaraja Daham School , Sugatharamaya, Kalukele	200,000.00
For the building of Sri Mihidu Daham School of Sri Mihidu Buddhist Centre Pahala Ellewewa	200,000.00
For the building of Sri Anomadassi Daham School of Warapitiya Sri Sambodhi Temple.	200,000.00
Construction of Sanghawasa building at Sri Sudarshana Buddhist Centre	400,000.00
Construction of Meditation cubicles at Dimbulagala Aranya Senasana	1,058,388.98

Divisional Secretariat—Medirigiriya

Details of completed projects given directly to divisional secretary by other ministries and departments except Ministry of Economic Development

Project	Allocated Amount (Rs.)	Details of beneficiaries
Divisional Literary Art Festival	30,000.00	School Children, Art Institutes, Authors
“Dolosmahe Pahana”	20,000.00	Pre School Children, Child Societies, School Children, Elders Societies
Artiest “Suwadam” Programme	30,000.00	Aged Artists
Underprivileged Artiest Assistance	10,000.00	Underprivileged Artists
Development of Temples & Daham Schools	6,081,500.00	Temples & Daham Schools

Development of Temples & Daham Schools- Medirigiriya 2017

Serial No:	Name & Address of Temple	Name & Address of Daham School	Development Proposal	Funds Granted	Donor Agency
01	Sri Shakyasingharama-ya , Sansungama, Kaudulla	-	Temple Development	1,000,000.00	Ministry of National Policies & Economic Affairs
02	Sri Bodhirukkarama-ya ,Diyasenpura	-	Development of Temple Stupa	1,000,000.00	Ministry of National Policies & Economic Affairs
03	Sri Bodhirukkarama-ya ,Diyasenpura	-	Development of Temple Stupa	200,000.00	Provincial Council
04	Sri Wijayarama , Wijayapura	-		200,000.00	Provincial Council
05	-	Sri Bosath Daham School, Ulpathelagama	Development of Daham School Building	50,000.00	Provincial Council
06	-	Sri Ananda Daham School	Making Desks & Chairs	300,000.00	Provincial Council
07	-	Sri Pushparama Daham School, Kusumpokuna	Development of Daham School Building	202,000.00	Provincial Council
08	-	Sri Rahula Daham School, New Town	Obtaining Daham School Stationary	25,000.00	Provincial Council
09	-	Sri Bosath Daham School, Ulpathelagama	Construction of Daham School Library Building	200,000.00	Provincial Council
10	-	Sri Sambodhi Dharma Vidyalaya, Yudaganawa	Construction of Daham School Building	200,000.00	Provincial Council

Annual Performance and Accounts Report—2017 Polonnaruwa District

11	-	Sri Rathanajothi Daham School, Medirigiriya	Obtaining Daham School Equipment	50,000.00	Provincial Council
12	-	Sri Saranatisa Daham School, New Town	Daham School Development	50,000.00	Provincial Council
13	-	Sri Shakyamunindarama Daham School, Meegollewa	Daham School Development	50,000.00	Provincial Council
14	-	Sri Anandakumudu Daham School, Mahathalokolawewa	Making Desks & Chairs	37,500.00	Provincial Council
15	Sri Shanthi Viharaya Etambaoya	-	Construction of Sangawasa	50,000.00	Provincial Council
16	Sri Bodhirukkaramaya, Meegaswewa	-	Construction of Awasa	20,000.00	Provincial Council
17	Sri Abhayawardanaramaya, Abhayapuragama	-	Obtaining Sheets	25,000.00	Provincial Council
18	Sri Paschimaramaya, Medirigiriya	-	Obtaining Chairs	30,000.00	Provincial Council
19	-	Sri Rahula Daham School, New Town	Daham School Building Development	150,000.00	Provincial Council
20	-	Sri Saranatisa Daham School, New Town	Construction of Daham School Building	200,000.00	Provincial Council
21	Sri Kahambiliyawa Rajamaha Viharaya	-	Construction of Cloud Wall	100,000.00	Provincial Council
22	-	Sri Wimalarama Daham School, Mailagashandiya	Obtaining Daham School equipment	50,000.00	Provincial Council
23	-	Sri Rahula Daham School, Paluwaddana	Daham School Building Development	250,000.00	Provincial Council
24	-	Sri Mihidu Daham School, L.B.09	Obtaining Loudspeakers	42,000.00	Provincial Council
25	Sri Sudarmaramaya, Diggallpura	-	Repairs to the Lavatory System	50,000.00	Provincial Council
26	-	Sri Pushparama Daham School, Kusumpokuna	Construction of Daham School Building	400,000.00	Provincial Council
27	-	Sri Shakyamunindrama Daham School Meegollewa	Construction of Daham School Building	200,000.00	Ministry of Bud-dhasasana
28	Sri Abhayawardanaramaya, Abhayapuragama	-	Repairs to Sanghawasa	200,000.00	Ministry of Bud-dhasasana
29	Sri Ashokaramaya, New Town	-	Completion of Sanghawasa	200,000.00	Ministry of Bud-dhasasana
30	Sri Sudarshanarama Purana Rajamahaviharaya Mahathalokolawewa	-	Repairs to Sanghawasa	200,000.00	Ministry of Bud-dhasasana
31	Sri Vivekarama Purana Viharaya, Bisobandara	-	Repairs to Sanghawasa	200,000.00	Ministry of Bud-dhasasana
32	Sri Sudarmaramaya, Diggallpura	-	Construction of Toilet System	150,000.00	Ministry of Bud-dhasasana

5.3 Financial Management

5.3.1 Expenditure Report of Other Departments 2017

Head	Ministries/Departments	Funds (Rs.)	Utilization (Rs.)	Balance (Rs.)
001	President Office	61747489.85	57645950.12	4101539.73
101	Ministry of Buddhasasana	6912388.98	6683625.40	228763.58
104	Ministry of National Policies & Economic Affairs	420237069.10	280590312.04	139646757.06
106	Ministry of Disaster Management	130933779.95	113026602.40	17907177.55
110	Ministry of Justice	3685950.00	3474730.00	211220.00
118	Ministry of Agriculture	72397548.80	71948312.89	449235.91
120	Ministry of Child Development & Women's Affairs	157139554.00	144633611.17	12505942.83
124	Ministry of Social Service	327210727.44	326137727.44	1073000.00
126	Ministry of Education	128000000.00	119947009.12	8052990.88
130	Ministry of Public Administration & Management	922850.10	921236.00	1614.10
136	Ministry of Sports	922850.10	921236.00	1614.10
145	Ministry of Prison Reforms, Rehabilitation, Resettlement & Hindu Religious Affairs	64831472.00	55251610.00	9579862.00
153	Ministry of Lands	105000.00	103969.00	1031.00
154	Ministry of Rural Economics	75066785.00	38789295.87	36277489.13
155	Ministry of Provincial Council & Local Government	85000.00	83291.36	1708.64
157	Ministry of National Co Existence , Dialog & Official Languages	3859967.00	3824230.17	35736.83
160	Ministry of Mahawela Development & Environment	520500.00	519600.00	900.00
163	Ministry of Internal Affairs , Wayamba Development & Cultural	26886471.15	24174498.66	2711972.49
165	Ministry of National Integration & Reconciliation	17533000.00	8831392.55	8701607.45
166	Ministry of City Planning & Water Supply	3510509.36	3421422.57	89086.79
182	Ministry of Foreign Employment Promotion	10245781.85	10060263.74	185518.11
194	Ministry of Telecommunication & Digital Infrastructure Development	3745120.00	3446473.73	298646.27
196	Ministry of Science, Technology & Research	770252.20	715941.94	54310.26
197	Ministry of Skill Development & Vocational Training	50800.00	42368.50	8431.50
198	Ministry of Irrigation & Water Resources Management	4748917.00	3875815.40	873101.60
201	Department of Buddhist Affairs	13081825.00	12634727.00	447098.00
202	Department of Muslim Religious Affairs & Cultural Affairs	500000.00	498147.00	1853.00
206	Department of Cultural Affairs	967050.00	945869.00	21181.00
210	Department of Government Information	14000.00	12000.00	2000.00
216	Department of Social Services	4451282.47	4450626.29	656.18
217	Ministry of Probation & Child Care	5355649.27	5355649.27	-
219	Department of Sports Development	369740.00	94240.00	275500.00
227	Department of Registration of Persons	4843.601.52	4789245.55	54355.97
252	Department of Census & Statistics	2322693.80	2199813.57	122880.23
253	Department of Pensions	69524272.87	66511339.96	3012932.91
254	Department of Registrar General	5493841.19	5237037.61	256803.58
284	Department of Wild Life Conservation	3250000.00	3248245.00	1755.00
285	Department of Agriculture	400000.00	400000.00	-
286	Department of Land Commissioner General	21691030.68	21579924.25	111106.43
307	Department of Motor Traffic	836000.00	754266.11	81733.89
326	Department of Community Based Correction	28500.00	22455.00	6045.00
327	Department of Land Use Policy Planning	481830.00	457203.00	24627.00
328	Department of Manpower & Employment	826576.50	818278.20	8298.30
	Total	165,1664,075.66	1,409,079,592.88	247,428,084.30

5.3.2 Monthly Revenue Collection - Various Ministries & Departments

Revenue 2017

Revenue Head	January	February	March	April	May	June	July	August	September	October	November	December	Total
10.02.07.00													
10.03.03.00													
10.03.07.02	804450.00	839560.00	954200.00	454540.01	708900.00	866700.00	771550.00	969600.00	829500.00	882100.00	990700.00	923100.00	9994900.01
10.03.07.03	5700.00	6742.50	9412.50	4972.50	5917.50	6637.50	8212.50	14080.00	5422.50	6322.50	7950.00	6652.50	88022.50
10.03.07.05	16580.00	10870.00	21840.00	18710.00	14010.00	14800.00	40260.00	7010.00	21100.00	6130.00	20060.00	14520.00	205890.00
10.03.07.99	592167.45	415261.20	754260.16	463100.00	889508.50	1055059.00	786875.00	2576792.00	936164.00	1496210.00	794710.00	385295.00	11145402.31
20.02.01.01	145179.26	166536.21	169840.37	166637.45	163063.38	139570.20	164459.13	154191.46	168261.77	167910.93	160416.62	145975.60	1912042.38
20.02.01.03	951400.96	1393786.63	1049724.86	92572.00	1524064.44	1342714.61	1056266.03	3650674.51	2096376.35	1155427.02	4676014.58	2033654.28	21022676.22
20.02.02.99	315788.59	313852.12	332957.10	303070.95	372632.55	400595.34	372215.16	361487.22	417174.30	365714.05	360674.10	336236.90	4252398.38
20.03.02.03	24000.00	22750.00	28500.00	19750.00	19500.00	19500.00	20500.00	24750.00	11750.00	49500.00	174980.00	245550.00	661030.00
20.03.02.13	-	-	-	-	-	-	-	-	-	-	-	250	250
20.03.02.14	4459625.00	2345325.00	2559475.00	1109575.00	2022250.00	1985980.00	2425725.00	2532585.00	3648050.00	3602125.00	3314485.00	3433925.00	33439125.00
20.03.02.99	500.00	750.00	6600.00	4300.00	-	1200.00	2800.00	5478.92	2100.00	300.00	1160.00	26248.11	51437.03
20.03.99.00	74311.75	378601.75	971714.88	440248.27	316732.56	1901185.86	937497.42	4213341.63	537509.47	1976978.77	863517.04	5678798.55	18290437.95
20.03.03.02	7700.00	2000.00	846557.48	700.00	1000.00	5800.00	-	-	10100.00	2000.00	200.00	1100.00	877157.48
20.03.04.00	-	-	-	-	-	-	-	-	-	-	-	144920.00	144920.00
20.04.01.00	1388285.49	3290701.45	8538664.00	2376948.76	1410561.21	1549509.65	1424005.53	1413479.56	1406360.00	1406475.17	1415357.81	1413630.13	27033978.76
20.06.02.00	6000.00	-	-	-	-	-	-	-	-	-	-	-	6000.00
එකතුව	8791688.50	9186736.86	16243746.35	5455124.94	7448140.14	9289252.16	8010365.77	15923470.30	10089868.39	11117193.44	12780225.15	14789856.07	129125668.07

5.3.3 Summary of Financing Expenditure by Programme

Expenditure Head No : 275 Name of Ministry / Department / District Secretariat : District Secretariat - Polonnaruwa
 Expenditure Head No : 1,
 Operational Programme

Code	Financing Description of Items	Programme 1 *		Programme 2 *		Grand Total		
		Net Provision ** 1	Actual Ex- penditure 2	Net Provision ** 3	Actual Ex- penditure 4	Net Provision ** 5	Actual Expenditure 6	percent- age*** of Expenditure (6÷5)X100
		Rs.	Rs.	Rs.	Rs.	Rs.	Rs.	%
11	Domestic Funds	938,268,000	846,236,026			938,268,000	846,236,026	90
12	Foreign Aid - Loan							
13	Foreign Aid - Grant							
14	Reimbursable For- eign Aid - Loan							
15	Reimbursable For- eign Aid - Grant							
16	Counterpart Fund							
17	Foreign Aid related Domestic Funds							
21	Special legal services							
	Total	938,268,000	846,236,026	0	0	938,268,000	846,236,026	90

5.3.4 Appropriation Account by Programme - 2017

Expenditure Head No :
275

Name of Ministry / Department / District Secretariat : District Secretariat - Polonnaruwa

Programme No. & Title : 1, Operational Programme

Summary of Recurrent and Capital Expenditure

Nature of Expenditure with DGSA format Reference	(1)	(2)	(3)	(4)	(5)	(6)	Page No. (Reference to relevant DGSA format)
	Provision in Budget Estimates Rs.	Supplementary Provi- sion and Supplimen- tary Estimate Alloca- tion Rs.	Transfers in terms of the F.R. 66 and 69 Rs.	Total Net Provi- sion (1+2+3) Rs.	Total Expendi- ture Rs.	Net Effect Savings/(Excess) (4-5)	
(a) Recurrent (DGSA 3)	367,630,000	48,638,000	0	416,268,000	415,274,634	993,366	3
(B) Capital (DGSA 4)	522,000,000	0	0	522,000,000	430,961,392	91,038,608	4
Total	889,630,000	48,638,000	0	938,268,000	846,236,026	92,031,974	

5.3.5 Summary of Control Accounts for Advance & Deposit Accounts - 2017

Name of Ministry / Department / District Secretariat : District Secretariat—
Polonnaruwa

Expenditure Head No :275

Name of Advance / Deposit Account	Account No.	As per Department Books				Balance as per Treasury Books as at 31/12/2017
		Opening Balance as at 01/01/2017	Debits during the year	credits during the year	Balance as at 31/12/2017	
		Rs.	Rs.	Rs.	Rs.	Rs.
I. Advances to Public Officers	8493/0/0/0275/0011	83,450,500.58	30,974,405.89	22,758,488.58	91,666,417.89	91,666,417.89
II. Other Advances	8493/0/0/0275/0012	0.00	1,865,265.00	2,546,235.30	680,970.30	680,970.30
III Miscellaneous Advances						
IV Deposits						
(i) General Deposits	6000/0000/00/0001/0116/000	1,993,915.48	3,022,156.46	1,341,741.18	313,500.20	313,500.20
	6000/0000/00/0002/0164/000	11,052,954.73	10,557,307.83	3,416,316.17	3,911,963.07	3,911,963.07
	6000/0000/00/0013/0118/000	55,570,369.50	240,779,851.88	300,577,197.02	115,367,714.64	115,367,714.64
	6000/0000/00/0016/0108/000	189,105,301.37	173,140,442.37	303,287,183.15	319,252,042.15	319,252,042.15
	6000/0000/00/0017/0030/000	958,476.86	74,627.00	106,300.00	990,149.86	990,149.86
	6000/0000/00/0018/0108/000	540,627.37	724,728.10	681,606.50	497,505.77	497,505.77
(ii) Other Deposits	6000/0000/00/0019/0026/000	106,355.20	90,932.68	11,480.00	26,902.52	26,902.52