



# Performance Report 2010

## Department of Wildlife Conservation







# Contents

	Page
Introduction	1
Planning Division	4
Natural Resources Management Division	7
Protection and Law Enforcement Division	13
Elephant Conservation Division	16
Research & Training Division	26
Visitor Services, Eco-tourisms and Community Outreach Division	36
Wildlife Health	49
Engineering Services Division	51
Administration Division	55
Finance Division	57
Annexes	61

## Performance Report - 2010 Department of Wildlife Conservation



## List of Tables

	Page
<b>Table 1.1:</b> Special Project Proposals Qualified for Funding	5
<b>Table 1.2:</b> Progress of Action Plan Activities in 2010.	6
<b>Table 2.1:</b> Rehabilitation and Construction of Water Bodies in 2010	7
<b>Table 2.2:</b> Rehabilitation of PA Road Network in 2010	8
<b>Table 2.3:</b> Survey and Demarcation of Protected Area Boundaries in 2010.	9
<b>Table 2.4:</b> Sign Boards Established in 2010	10
<b>Table 2.5:</b> Management of Grasslands in Wildlife Regions in 2010	11
<b>Table 2.6:</b> Removal of Invasive Species in 2010	11
<b>Table 2.7:</b> Maintenance of Fire Belts in 2010	11
<b>Table 2.8:</b> Wildlife Conservation Activities under Moragahakanda Project in 2010	12
<b>Table 2.9:</b> Wildlife Conservation Activities under Weheragala Project in 2010	12
<b>Table 3.1:</b> Number of Cases Prosecuted in 2010	14
<b>Table 3.2:</b> Progress of Action Plan Activities for 2010	15
<b>Table 4.1:</b> Regional Distribution of Elephant Deaths from 2006-2010	16
<b>Table 4.2:</b> Regional Distribution of Human Deaths	17
<b>Table 4.3:</b> Regional Distribution of Injuries to Human due to Elephant Attacks (2006-2010)	18
<b>Table 4.4:</b> Regional Distribution of Property Damages (2006-2010)	19
<b>Table 4.5:</b> New Electric Fences erected in 2010	21
<b>Table 4.6:</b> Procurement of Thunder Flares and Serphent Flares in 2010	22
<b>Table 4.7:</b> Distribution of the Thunder Flares and Serphent Flares in 2010	22
<b>Table 4.8:</b> Compensation Paid in 2010	22
<b>Table 4.9:</b> Capture and Translocation of Elephants in 2010	23
<b>Table 4.10:</b> Elephant Drives in 2010	24
<b>Table 4.11:</b> Gajamithuro Project – Progress in 2010	24
<b>Table 5.1:</b> Research Studies Undertaken by DWC Staff in 2010	26
<b>Table 5.2:</b> Collaborative Research Projects for 2010	27
<b>Table 5.3:</b> Short-term Special Training Programmes Conducted for Wildlife Officers in 2010	29
<b>Table 5.4:</b> Regular Training Programmes Conducted at NWTRC in 2010	30
<b>Table 5.5:</b> Awareness programmes conducted by NWTRC	31
<b>Table 5.6:</b> Financial Progress of NWTRC	31
<b>Table 5.7:</b> Foreign Training Programmes Participated by Wildlife Officers in 2010	32
<b>Table 5.8:</b> Seminars, Exhibitions and Awareness Programmes Conducted in 2010.	33
<b>Table 5.9:</b> Publications in 2010.	34
<b>Table 5.10:</b> Number of CITES Permits issued(2005-2010)	34
<b>Table 5.11:</b> International Meetings & Workshops Represented by DWC in 2010.	35
<b>Table 6.1:</b> Annual Income from Visitor Services	37
<b>Table 6.2:</b> Visitor Summery in 2010	38
<b>Table 6.3:</b> Improvement of Visitor Facilities	41
<b>Table 6.4:</b> Number of volunteer Guidees 2006-2010	41
<b>Table 6.5:</b> Cooperate Partnerships in 2010	42
<b>Table 6.6:</b> Development activities were carried out to improve visitor facilities in National Parks.	43
<b>Table 6.7:</b> Progress of Community Outreach Activities in 2010	46

## Introduction

Conservation of Sri Lanka's irreplaceable indigenous flora and fauna together with their natural habitats is a national priority. The Department of Wildlife Conservation (DWC) is the principle government institution responsible for the protection of wildlife resources of the country over its entire land and sea territories. DWC also bears the legal authority to establish and manage the network of Wildlife Protected Areas (WLPAs) of the country, which at present exceeds a total area of 8500 km<sup>2</sup>; 13% of Sri Lanka's land surface. Following table illustrates the categories and the quantities of wildlife protected areas that have been declared by Department of Wildlife Conservation. Annex 01 provides comprehensive account on wildlife protected areas providing a map and the details including the name of PA, extent and the location.

Category of PA		Number of PAs Declared up to date
National Reserves	Strict Natural Reserve	03
	National Park	21
	Nature Reserve	05
	Jungle Corridors	01
<b>Total</b>		<b>30</b>
Sanctuaries		62
<b>Grand Total</b>		<b>92</b>

Apart from preserving the biological resources rich in diversity together with their natural habitats, the network of WLPAs protects almost all the large scale reservoirs of the country which provide water for agriculture and generation of hydro-power. Since 1950s, all the reservoirs in the Gal Oya Valley including Senanayake Samudra, all Mahaweli reservoirs and those fed with Mahaweli water in the Central and North Central Provinces, all the reservoirs in the Southern Part of the country including Udawalawa, Mau Ara, Lunugamvehera and Veheragala, are protected together with their catchment areas, within the network of WLPAs. Total number of reservoirs which provides water for agriculture and Hydro-power generation within the WLPAs exceeds 40.

Upper catchments of the major rivers of Sri Lanka, viz. Mahaweli, Kalu, Kelani and Walawe also fall within the Wildlife reserves such as Peak Wilderness Nature Reserve and Horton Plains National Park.

Having the tenure of Sri Lanka's most precious resource, natural ecosystems, DWC is taking the responsibility of professional management and conservation of those WLPAs making mission of DWC guided by its vision.

**Vision:** The conservation of wildlife heritage for present and future generations.

**Mission:** Working with others to ensure conservation of wildlife heritage through professional management.

As per the guidelines provided in the National Wildlife Policy of Sri Lanka, the management of the WLPAs which contributes immensely to the National Economy of the country is done in line with the strategies, plans and programmes of national and international standards.

Current global vision of protected area management emphasizes science in decision making , efficient communication and management of complex information , long term management plans to guide and balance conservation and development efforts, provision of varied recreational and educational opportunities for visitors, and linking local communities through participation and benefit-sharing.

Currently the Department is embarked on an effort to upgrade its operations in several fronts.

- To develop national strategic plans and programmes for conservation of wildlife resources, keeping in line with the appropriate national and international policies.
- To protect representative samples of all eco-systems, including sites of special scientific interest; expand and link protected areas wherever necessary to ensure the survival of viable populations of wildlife.
- To identify, classify and manage all protected areas, based on appropriate scientific research and regulations, and then monitor the status of each protected area.
- To prepare and implement recovery plans for endangered species.
- To facilitate eco-tourism in PAs, with due consideration to the conservation of the ecosystems concerned.
- To implement the Fauna and Flora Protection Ordinance and other regulations effectively, to minimize illegal exploitation of wildlife resources, within and outside WLPAs.
- To encourage scientific research relevant to the management of the wildlife resources in Sri Lanka.
- To strengthen the capabilities of the staff of the DWC through the provision of training, encouragement and motivation.
- To promote conservation through public education and awareness programmes.
- To encourage public participation in conservation activities and assist the communities living around PAs to improve their socio- economic conditions, in order to reduce their dependency on PA resources.

Department of Wildlife Conservation is operating under 08(eight) technical divisions at the Head Office level *viz*; Planning and Information Communication Technology Division, Natural Resources Management, Elephant Conservation, Visitor Services Eco-tourism & Community Outreach, Research and Training, Protection & Law Enforcement and Wildlife Health. In addition Finance Division, Administration Division and Engineering Division perform supporting duties of the technical divisions of department. Details of the activities implemented by the divisions aforementioned are given in the Chapters 01 to 11.

The action plan was implemented by 07 Assistant Director Regions *viz*; Central, Eastern, Mahaweli, North Western, Southern, Western and Yala-Bundala. Under these regions wildlife protected areas were managed to achieve conservation goals and development targets.

Under the decentralization program of DWC two Regional Deputy Director Offices were established in Anuradhapura to supervise Mahaweli and North Western regions and Lunugamwehera to supervise Yala-Bundala and Southern regions.

National Wildlife Training & Research Centre at Giritale conducted regular training programmes to improve skills and knowledge and to mould the attitude of wildlife officer on favors of wildlife management.

In the year 2010 funds (Rs. Million 841.6) were received from Consolidated Fund for implementing the action plan of the year. In addition funds from Wildlife Preservation Fund, Moragahakanda and Veheragala irrigation projects and donations from donors and donor agencies were also disbursed for planned conservation activities.

Year end account show that the healthy financial progress; 95.6% of recurrent expenditure and 93.8% of capital expenditure (Annex 2)

## Chapter 1

### PLANNING & ICT DIVISION

#### 1.1. Main Activities and Responsibilities

- Preparation of annual action plan for the DWC.
- Preparation of Project Proposals for special development and conservation activities.
- Monitoring the implementation progress of annual action plan.
- Preparation of progress reports monthly, quarterly and annually.
- Preparation of annual performance report.
- Updating and administration of DWC web site; [www.dwc.gov.lk](http://www.dwc.gov.lk)
- Monitoring, upgrading and maintenance of island wide radio communication system of the DWC.
- Monitoring, upgrading and maintenance of PABX.
- Administration and maintenance of Wide Area Network (WAN) of DWC.
- Automation of National Parks.
- Administration of GIS unit.

#### 1.2 Performance 2010

Following major activities were carried out during the year 2010.

- **Preparation of Action Plan**

Work program including Action Plan of the Department for the year 2010 was prepared and submitted to Ministry of Economic Development.

- **Progress Reporting**

Monthly and quarterly progress reports were sent in time as per the schedule to Ministry of Economic Development on the progress of implementation of activities under capital budget including 'Uthuru Wasanthaya' and 'Nagenahira Navodaya'. Occasional progress reports were submitted to various other institutions, according to the necessity and on request.

- **Preparation of the Performance Report**

Performance report for the year 2009 was compiled using data and information on the implementation of Action Plan activities and results of conservation operations of DWC.

- **Preparation of Special Project Proposals**

Project proposals on special conservation and development activities in protected areas prepared by Planning and ICT division were forwarded to the treasury and/or other funding agencies. In 2010 following special project proposals (Table 1.1) were qualified for funding and DWC is to receive funds for these proposals in 2011.

**Table 1.1: Special Project Proposals Qualified for Funding**

<b>Name of the Proposal</b>	<b>Total Project Cost (Rs. Million)</b>	<b>Funds to be Received in 2011 (Rs. Million)</b>	<b>Funding Source</b>
Three year (2011-2013) development plan for DWC	832.00	89.44	Consolidated Fund
Establishment of Wetland Monitoring Laboratory in Bundala National Park	2.20	2.20	UNESCO

- **Administration of DWC Wide Area Network (DWC WAN)**

Existing computer network was maintained and administered throughout the year by staff of planning division. These activities include repairing of computers and accessories, trouble shooting of the WAN, upgrading the computers with installing new hardware and software.

Automation of ticketing system was completed at Minneriya, Kaudulla & Wasgomuwa National Parks.

- **Administration of DWC Website: [www.dwc.gov.lk](http://www.dwc.gov.lk)**

Existing web site of DWC was continuously updated incorporating data and information, educational and research value. The entire process was performed by the staff of planning division.

- **Radio Communication Network**

Following activities were carried out to improve coverage and ensure uninterrupted connectivity of the radio communication system. Operational component of all these activities were performed by Radio Communication Technicians attached to the planning division.

- Procured and installed 2Nos. of ZR310 Repeater controllers for Aliyamalagala and Peak Wilderness repeater stations.
- 80 Nos. of walkie-talkie charger pockets were purchased.
- Rehabilitation of Sithulpawwa Repeater Station.
- Improvements to the communication system in Eastern Region

- **Administration of GIS Unit**

Maps were prepared for the following purposes and themes using the GPS data collected in the field.

- Proposed extensions to the protected area network in Northern and Eastern administrative provinces.
- Areas for grassland management.
- Existing and proposed electric fences.
- Locations and extent of fire belts.
- Human elephant conflict prevailing areas.



In addition maps on specific themes were prepared on the request of different divisions of head office and field offices.



**Figure 1.1:** Radio Communication Network



**Figure 1.2:** Mapping of the Protected Areas using GPS

- Program of Action Plan Activities in 2010. Table 1.2 indicates the progress of action plan activities implemented by Planning & ICT division in 2010.

**Table 1.2:** Progress of Action Plan Activities in 2010.

S.N.	Activity	Details	Expenditure (Rs. '000)
1	Allocations to wildlife regional offices for repairs and maintenance of Radio Communication Network.	<ul style="list-style-type: none"> <li>• 45 Nos. of antennae for walkie-talkie sets were repaired.</li> <li>• 2 Nos. of ZR 310 repeater controllers were procured and installed at Aliyamalagala and Peak Wilderness repeater stations.</li> </ul>	768
2	Automation of ticketing at Minneriya, Kaudulla, Wasgomuwa and Horton Plains National Parks.	<ul style="list-style-type: none"> <li>• 06 Nos. of computers and necessary accessories were procured and installed at Minneriya, Kaudulla and Wasgomuwa National Parks to automate the ticketing at the said locations.</li> <li>• 02 Nos. of notebook computers were purchased for Horton Plains National Park.</li> </ul>	810
3	Procurement of walkie-talkie charger pockets.	<ul style="list-style-type: none"> <li>• 80 Nos. of charger pockets were procured and distributed.</li> </ul>	690
4	Maintenance and upgrading of DWC WAN.	<ul style="list-style-type: none"> <li>• Payment for annual internet service.</li> </ul>	1,055
5	Procurement of computers, computer equipment and accessories.	<ul style="list-style-type: none"> <li>• Procured Laser Printers (04 Nos.), External Hard Disks (04 Nos.) and PCs (02 Nos.)</li> </ul>	377
<b>Total</b>			<b>3,700</b>

## Chapter 2

### NATURAL RESOURCE MANAGEMENT DIVISION

#### 2.1. Main Activities and Responsibilities

- Preparation and revision of Management Plans for protected area.
- Preparation and revision of resource inventories for protected areas.
- Reviewing the PA Network and carrying out PA declarations.
- Survey and demarcation of PA boundaries.
- Review, monitoring and formulation of policy for wildlife habitat management; water resources and grassland management.
- Implementation of Invasive species control activities.
- Management of fire belts.
- Coordination and supervision of pollution control and species recovery plans.
- Conducting EIA for development activities proposed in PAs
- Participating EIA process of development projects of the country.
- Working as administrative authority of Ramsar convention in Sri Lanka.

#### 2.2. Construction and Rehabilitation of Water Bodies

At present existing tanks and water holes are not sufficient to fulfill water requirement of the animals during dry seasons. Therefore, it is necessary to maintain an adequate water supply for wild animals within the wildlife reserves. DWC has taken steps to construct new water bodies and renovate and repair existing tanks and water holes to enhance water supply for animals throughout the year (Table 2.1).

**Table 2.1:** Rehabilitation and Construction of Water Bodies in 2010

Wildlife Region	Location	Expenditure (Rs. '000')
North Western	Rehabilitation of tank in Wilpattu National Park	510
	Rehabilitation of Karambawewa Tank in proposed Yan Oya National Park	508
Yala Bundala	Construction of concrete waterholes in Bundala National Park	95
<b>Total</b>		<b>1,113</b>



**Figure 2.1:** Rehabilitation of Water Tanks in Protected Areas

### 2.3 Development of Road Network

As wildlife reserves in the country have expanded progressively during the past few years, necessary infrastructure facilities need to be developed for both to enhance protection and to enhance visitor facilities. Development of road network in PA system plays a significant role in this regard.

Rehabilitation of roads was completed in Yala, Wilpattu, Galoya, Udawalawa, Horton Plains, Kumana, Lunugamvehera and Lahugala National Parks. Table 2.2 provides the details of road development activities carried out in 2010.

**Table 2.2:** Rehabilitation of PA Road Network in 2010

Wildlife Region	Name of PA and Rehabilitated Road Network	Length (km)	Expenditure (Rs. '000')
North Western	Rehabilitation of roads in Wilpattu National Park	3 Km	332
	Rehabilitation of roads & causeways in Yanoya	5.5 Km	670
Southern	Rehabilitation of roads in Udawalawa National Park	18 Km	120
	Road from Main Entrance to Mahaiyawa – Yala National Park	3 causeways	747
Yala/Bundala	Rehabilitation of road Yala National Park	36 Km	1,682
Eastern	Road network in Kumana National Park	8 Km of road with 4 causeways	1,216
	Rehabilitation of road network in Lahugala National Park	8 Km	100
Central	Rehabilitate nature trail from Bakers Falls to World's End - Horton Plains National Park	2 Km	2,024
	Rehabilitation of main road in Horton Plains National Park	4.7 Km	1,928
<b>Total</b>			<b>8,819</b>



**Figure 2.2:** Rehabilitation of roads in Kumana National Park



**Figure 2.3:** Rehabilitation of roads in Udawalawa National Park

## 2.4 Establishment of Protected Area Network

- Ussangoda Sanctuary was upgraded to national park status.
- Survey and boundary demarcation were carried out to strengthen the protected area network. Surveys for demarcating bathing area were finished at Hikkaduwa NP and demarcation of Ussangoda National Park. Table 2.3 shows the progress of boundary demarcation activities carried out in 2010
- Sign boards were manufactured and erected along the boundaries of Hikkaduwa, Willpattu, Kaudulla, Kumana, Ussangoda and Somawathiya National Parks, Haggala Strict Natural Reserve, and Sigiriya and Buddhangala sanctuaries. Table 2.4 shows the detail of establishment of sign boards in protected areas.
- Declaration of Vankalai sanctuary as an internationally important wetland for migratory birds (Ramsar wetland).

**Table 2.3:** Survey and Demarcation of Protected Area Boundaries in 2010.

Wildlife Region	Activities	Total Length/Area Demarcated	Expenditure (Rs. '000')
Southern	Demarcation of bathing area at Hikkaduwa NP	0.05 Km	76
	Boundary demarcation of Buddhangala Sanctuary		312
	Erection of boundary posts in Ussangoda Sanctuary	5 Km	457
Western	Identification of Boundaries of Madu Ganga Sanctuary for regazzeting	2400 ha	112
Mahaweli	Demarcation of the boundaries of newly regazzeted area - Naval Head Works Sanctuary	16.7 Km	820
<b>Total</b>			<b>1,777</b>



**Figure 2.4:** A boundary post emblematic to DWC

**Table 2.4:** Sign Boards Established in 2010

Wildlife Region	Activity	Quantity (Nos.)	Expenditure (Rs. '000')
Southern	Concrete sign boards in Ussangoda National Park	02	20
Western	Sign boards in Hikkaduwa National Park	25	394
Mahaweli	Sign board at Assistant Director office, Polonnaruwa	01	5
	Sign boards in Kaudulla National Park	30	437
	Sign boards on Sigiriya Sanctuary	24	349
	Sign boards in Somawathiya National Park	40	552
North Western	Sign boards (6' x 4' Digital) in Wilpattu National Park	01	44
Central	Sign boards in Haggala Strict Natural Reserve	15	263
	Rehabilitation of Sign boards in Galwaysland National Park	03	18
<b>Total</b>			<b>2,082</b>



**Figure 2.5:** Sign board erected at Kumana National Park



**Figure 2.6:** Sign board erected at Hikkaduwa National Park

## 2.5. Habitat Enrichment for Wildlife

Removal of the invasive species, management of grasslands and maintenance of the fire belts are the major activities conducted under habitat enrichment. Tables 2.5, 2.6 and 2.7 show the details of the habitat enrichment activities carried out in 2010.

**Table 2.5:** Management of Grasslands in Wildlife Regions in 2010

Wildlife Region	Name/ Location of Grassland	Extent (ha)	Expenditure (Rs. '000')
North Western	Habitat enrichment in Ritigala - Yanoya	1.0	125
Southern	Under brushing road sides up to Rathmalwewa in Lunugamwehera National Park	5.5	170
Western	Maintenance of grassland in Deer project area at Horagolla National Park	0.037	200
	Fence maintenance and plant nursery in Bellanwila Aththidiya Sanctuary		30
Mahaweli	Maintenance of Grassland at Tabbova Sanctuary	10.0	750
<b>Total</b>		<b>16.5</b>	<b>1,275</b>

**Table 2.6:** Removal of Invasive Species in 2010

Wildlife Region	Invasive Species	Extent (ha)	Expenditure (Rs. '000')
Western	'Diyapara' in Hog Deer project area in Horagolla National Park	2.5	199
	Invasive <i>Anona glabra</i> in Sri Jayawardanapura Sanctuary	4.0	382
Central	<i>Ulex europia</i> in Horton Plains National Park	8.0	50
North Western	<i>Prosopis juliflora</i> in Thabbowa Sanctuary	10.0	950
<b>Total</b>		<b>24.5</b>	<b>1,581</b>

**Table 2.7:** Maintenance of Fire Belts in 2010

Wildlife Region	Protected Area	Extent (ha)	Expenditure (Rs.'000')
Mahaweli	Maduruoya National Park	5.0	370
<b>Total</b>		<b>5.0</b>	<b>370</b>



## 2.6 Wildlife Conservation Activities under Moragahakanda Project

Project component on wildlife of Moragahakanda development project is implemented by DWC. Priority concern under these activities is to minimize Human Elephant Conflicts in the area. Table 2.8 gives a full account of wildlife activities under Moragahakanda Project.

**Table 2.8:** Wildlife Conservation Activities under Moragahakanda Project in 2010

Activities	Expenditure (Rs.'000')
Training Program for Bungalow keepers	78
Providing Training programs for Wildlife officers	161
Purchasing equipments for Sadawasa-Pubbiliya power fence in Wasgamuwa National Park	11,340
Construction of 3 causeways in Angammedilla National Park	427
<b>Total</b>	<b>12,006</b>

## 2.7. Wildlife Conservation Activities under Weheragala Project

Department of Irrigation funded for following wildlife conservation activities (Table 2.9) in Lunugamwehera National park in 2010.

**Table 2.9:** Wildlife Conservation Activities under Weheragala Project in 2010

Activities	Details	Expenditure (Rs.'000')
Removal of <i>Lantana camara</i> in Lunugamwehera National Park	30ha	2,073
Purchasing double cabs	2 double cabs	11,200
<b>Total</b>		<b>13,273</b>



**Figure 2.7:** Area in Lunugamwehera National Park where *Lantana camara* was uprooted

## Chapter 3

### PROTECTION AND LAW ENFORCEMENT DIVISION

#### 3.1. Main Activities and Responsibilities

- Implementation of the Fauna and Flora Protection Ordinance (FFPO)
- Declaration of Protected Areas (PAs)
- Preparation of regulations and amendments for FFPO
- Consultation to field staff on enforcement of FFPO

#### 3.2. Performance in detail

##### 3.2.1. Implementation of Fauna and Flora Protection Ordinance

- **Registration of Domestic Elephants and Tusks**

It's mandatory to,

- register newly born elephants to domesticated elephants
- register tusks in possession of any person
- renew the registration of elephants and tusks annually

In 2010 registration renewal was done for 185 elephants and 66 tusks. The revenue earned from the registration is Rs. 126,416.84

- **Detection of Wildlife Offences**

Six hundred and fifty one wildlife offences have been detected and culprits were taken to courts during the reporting period. Revenue collected as fines imposed by court is Rs. 14,427,000.00. Regional distribution of cases prosecuted in 2010 is given in Table 3.1. Distribution of number of court cases prosecuted and revenue generated from fines imposed by court during the period of 2006 to 2010 are given in Figures 3.2 and 3.3.



**Figure 3.1a:**

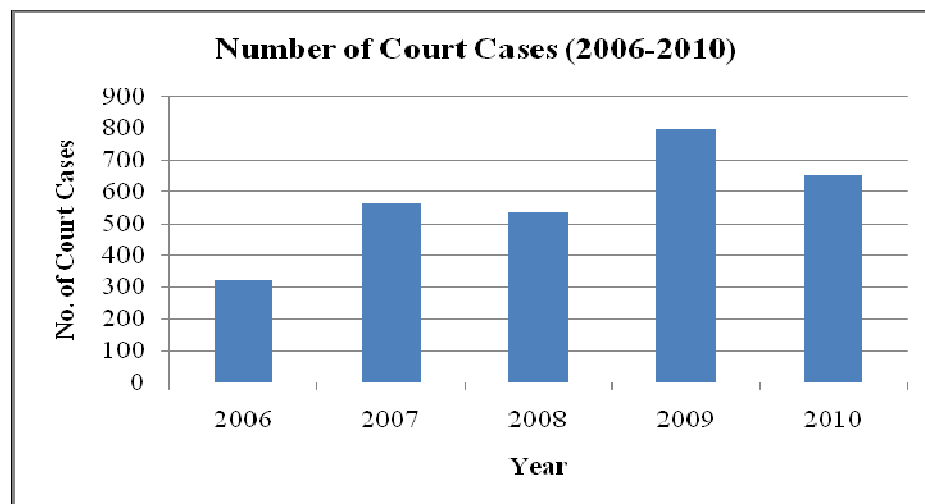


**Figure 3.2b:**

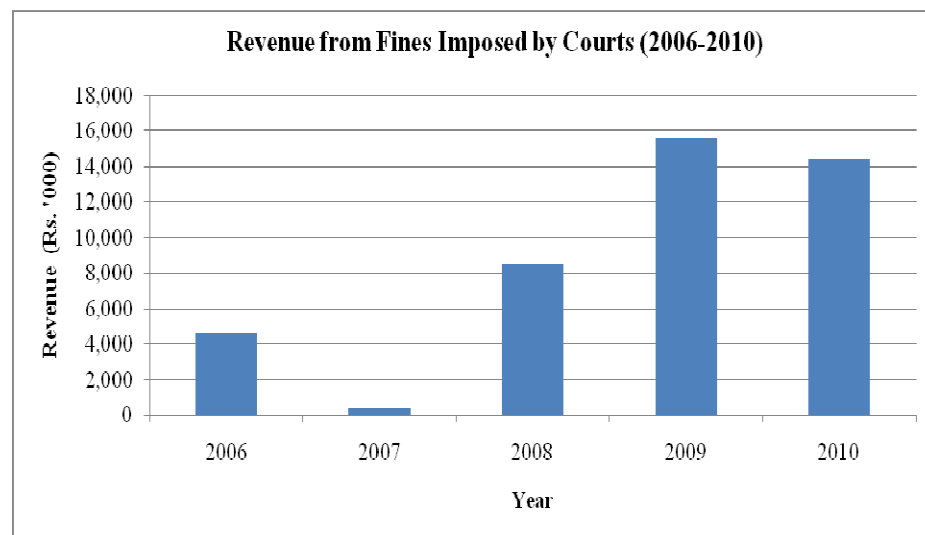
**Figure 3.1a & b :**Wildlife officers engaged in razing a raided *Cannabis sativa* (Cannabis/Ganja) Chena

**Table 3.1:** Number of Cases Prosecuted in 2010

Region	No. of Cases
North - Western	100
Mahaweli	309
Yala Bundala	-
Southern	59
Central	100
Eastern	47
Western	23
Flying Squad (Head Office)	13
<b>Total for 2010</b>	<b>651</b>



**Figure 3.2:** Number of Cases Prosecuted (2006- 2010)



**Figure 3.3:** Revenue Generated from Fines imposed by courts (2006- 2010)

Funds allocated under the annual action plan for the protection and law enforcement division was utilized to improve supporting infrastructure for law enforcement. The progress of the action plan activities are given in the table 3.2.

**Table 3.2:** Progress of Action Plan Activities for 2010

S.No	Activity	Remarks	Expenditure Rs. ('000)
1	Construction of gun mounting racks	New racks – 20 Nos. Repairs – 01 Nos.	796
2	Purchasing of repeater guns & cartridges	Repeater guns – 50 Nos. Cartridges – 8500 Nos.	1,433
3	Removal of domestic cattle from Udawalawe National Park	completed	177
4	Awareness programmes(for DWC Staff) on Law Enforcement	04 programs completed	73
5	Repairing of Fire Arms	completed	23
6	Dry season Anti-poaching programmes	Completed in Yala National Park	98
7	Range and Regional Boundary Redefining	one meeting held	52
9	Removal of domestic cattle from Lunugamvehera National Park	completed	-
10	Payments for consultation fees for legal matters	completed	57
11	Purchasing of office equipments	PCs – 3 Nos. Scanners – 01 Nos. Photocopy machines – 01 Nos.	2,069
<b>Total</b>			<b>4,778</b>

## Chapter 4

### ELEPHANT CONSERVATION DIVISION

#### 4.1. Main Activities and Responsibilities

- Implementation of national elephant conservation policy.
- Maintaining and updating a database on elephant related data and information.
- Establishment of elephant conservation areas including elephant corridors.
- Payments of compensation for damages due to HEC.
- Construction and management of physical barriers against elephant movements in settlements such as power fences, live fences and other innovative solutions.
- Capture and translocation of elephants.
- Organizing elephant drives and monitoring the progress.
- Procurement of goods and equipments related to elephant management.

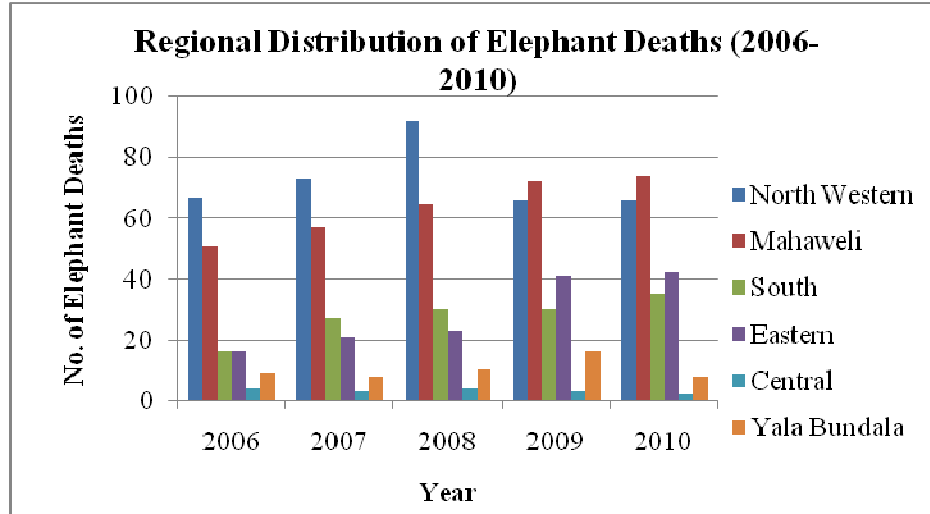
#### 4.2. Performance in detail

##### 4.2.1. Human Elephant Conflict (HEC)

Elephant population of Sri Lanka is currently facing serious threats to its existence due to continuous shrink of favorable habitats, due to changes in land use patterns and degradations of the quality of existing habitats. As a result a conflict has been arising causing property damages, injuries and deaths of both human and elephants. Data pertaining to the elephant deaths, human deaths, injuries due to elephant attacks and property damages are illustrated in the table 4.1, 4.2, 4.3, and 4.4 and Figures 4.1, 4.2, 4.3 and 4.4.

**Table 4.1:** Regional Distribution of Elephant Deaths from 2006-2010

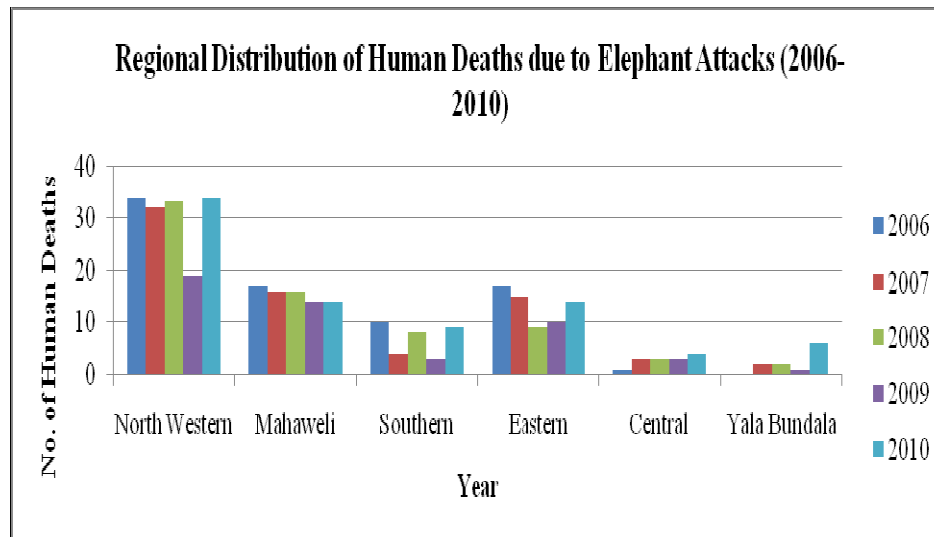
Region	Annual Number of Elephant Death					
	2006	2007	2008	2009	2010	Total
North Western	67	73	92	66	66	364
Mahaweli	51	57	65	72	74	319
Southern	16	27	30	30	35	138
Eastern	16	21	23	41	42	143
Central	4	3	4	3	2	16
Yala Bundala	9	8	10	16	8	51
<b>Total</b>	<b>163</b>	<b>189</b>	<b>224</b>	<b>228</b>	<b>227</b>	<b>1,031</b>



**Figure 4.1:** Regional Distribution of Elephant Deaths (2006-2010)

**Table 4.2:** Regional Distribution of Human Deaths

Region	Annual Number of Human Deaths due to Elephant Attacks					
	2006	2007	2008	2009	2010	Total
North Western	34	32	33	19	34	152
Mahaweli	17	16	16	14	14	77
Southern	10	4	8	3	9	34
Eastern	17	15	9	10	14	65
Central	1	3	3	3	4	14
Yala-Bundala	-	2	2	1	6	11
<b>Total</b>	<b>79</b>	<b>72</b>	<b>71</b>	<b>50</b>	<b>81</b>	<b>353</b>

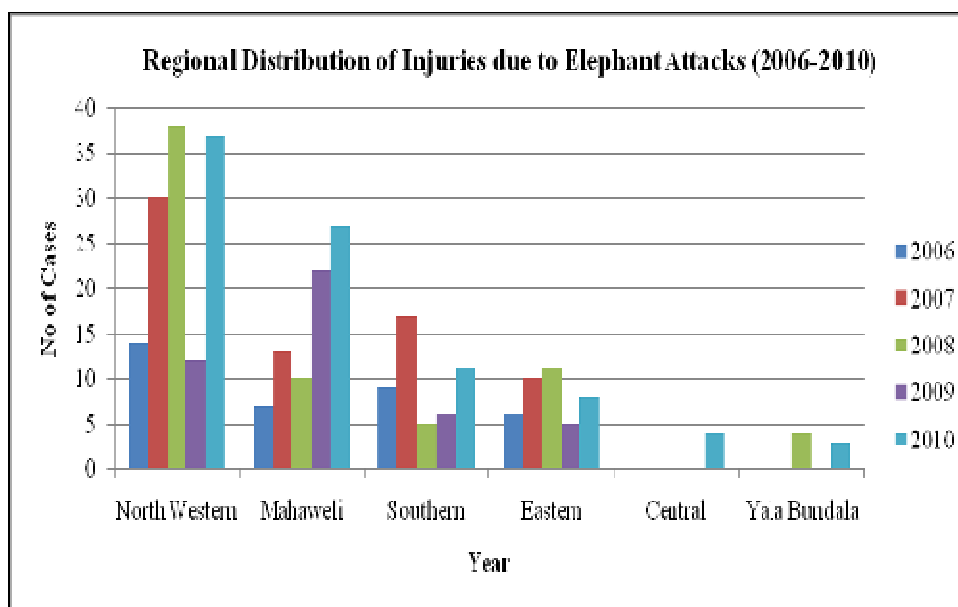


**Figure 4.2:** Regional Distribution of Human Deaths (2006-2010)



**Table 4.3:** Regional Distribution of Injuries to Human due to Elephant Attacks (2006-2010)

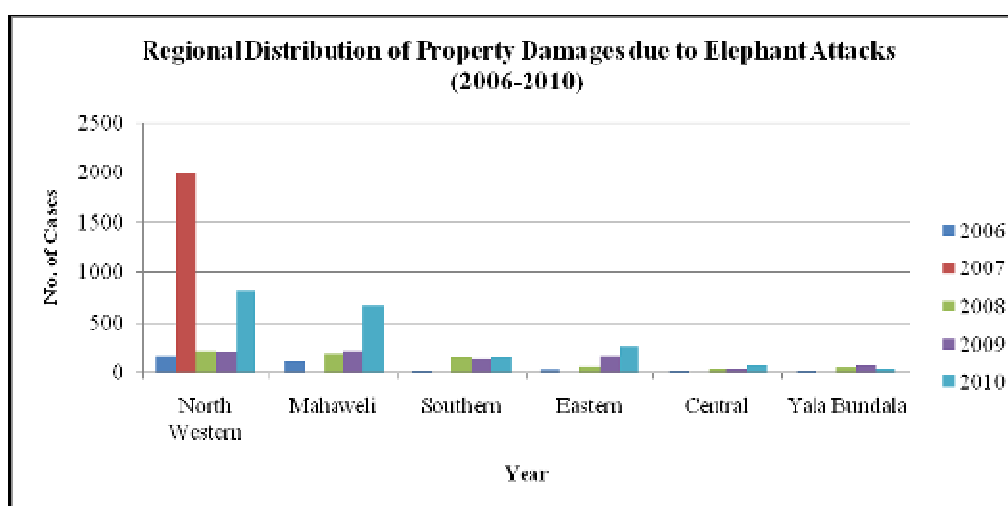
Region	Annual Number of Injuries					
	2006	2007	2008	2009	2010	Total
North Western	14	30	38	12	34	128
Mahaweli	7	13	10	22	14	66
Southern	9	17	5	6	9	46
Eastern	6	10	11	5	14	46
Central	0	0	0	3	0	3
Yala-Bundala	0	0	4	1	0	5
<b>Total</b>	36	70	68	49	71	294



**Figure 4.3:** Regional Distribution of Injuries to Human due to Elephant Attacks (2006-2010)

**Table 4.4:** Regional Distribution of Property Damages (2006-2010)

Region	Annual Number of Property Damages					
	2006	2007	2008	2009	2010	Total
North Western	151	306	233	203	812	1705
Mahaweli	107	429	180	230	670	1616
Southern	7	135	138	131	145	556
Eastern	26	66	53	155	266	566
Central	4	9	35	40	64	152
Yala-Bundala	10	23	45	68	40	186
<b>Total</b>	305	968	684	827	1997	4781



**Figure 4.4:** Regional Distribution of Property Damages (2006-2010)

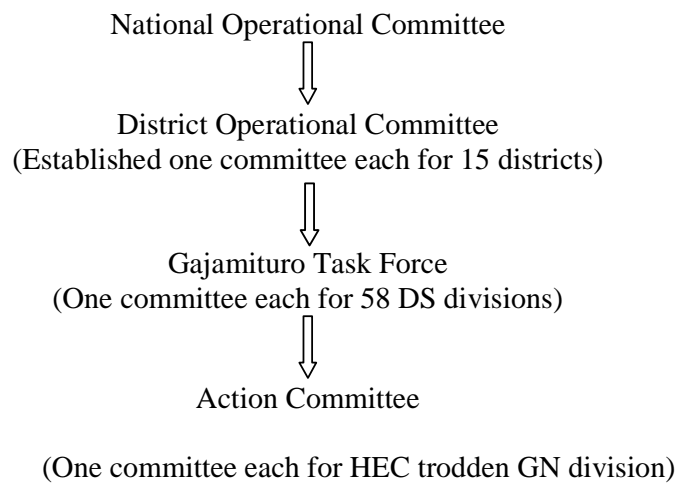
#### 4.2.2. Mitigation of Human Elephant Conflicts (HEC)

At this alarming level of HEC, DWC is actively engaged in mitigating HEC. DWC implement various strategies under the national policy mitigate HEC. Notably electric fence, elephant drives, distribution of thunder and serpent flare, habitat enrichment, establishment of habitat connectivity are the major concerns of DWC at presence. As a multifaceted approach in mitigating HEC, DWC has been implementing ‘Gaja Mituro’ Programme since 2008.

#### 4.2.2.1. Gajamituro Programme

Gajamituro programme was formulated to implemented measures to mitigate human elephant conflict in 58 Divisional Secretary divisions in 15 districts. Activities implemented under Gajamituro Programme were construction of electric fences, establishment of 15 elephant control units, procurement of thunder and serpent flares, payment of compensation for human death, injuries and property damages and procurement of field vehicles. This is a 3 year project and continued successfully in 2010.

Gajamituro programme is a type of participatory management and implementation project. It has been formulated to gain the support of national as well as village level of offences and individuals. Following is the simplified organization of Gajamituro Action committees. For the year 2010, Rs. 300 million was allocated for this project.



##### 4.2.2.1.1 Electric Fencing Program

The electric fence is being used as a psychological barrier against the wild elephants since 1966 in Sri Lanka. Today it has become a leading management tool in mitigating elephant depredations in agricultural and plantation areas.

In the year of 2010 under Gaja Mithuro programme accessories were purchased for new electric fences and construction will be completed by the end of 2011. Necessary reconstruction and repairs were also done to the existing fences (Table 4.5).

**Table 4.5:** New Electric Fences (EF) Erected in 2010

AD Region	Name of Electric Fence	Length of EF(Km)
North Western	Kalawewa North	15
	Gammiriswewa	08
	Uththuwa Gangeyaya Diguwa	09
	Siyambalawa Kallanchiya	20
Mahaweli	Ulhitioya to Maduruoya	20
	Divulankadawala Paluwaddana	10
	Extension of Nilapola EF to Muthur Lagoon	07
	Silapurimangalapuri Ariyamankeni	20
	Namalwatta	20
	Manka Uththu	13
	Kappalthurei	10
	Siripura Agbopura Kanthale	20
Southern	Wanasapugala extension	06
Central	Yatimadura	20
	Keerthibandarapura	25
	Bulathwel Kandura Bathmedilla	25
Eastern	Kopaweli Pillemale	25
	Wellawali	40
	Vakare	30



**Figure 4.5:** Fixing an electric fence



**Figure 4.6:** Properly maintained electric fence

#### 4.2.2.1.2 Distribution of Thunder Flares and Serpent Flares in 2010

Two types of specially designed crackers viz; Thunder flare and Serpent flare are annually purchased in bulk and distributed among wildlife offices. Villager in HEC trodden areas barrow the cracks from wildlife officer. Table 4.6 shows annual purchase and table 4. 7 illustrate annual distribution of these cracks.

**Table 4.6:** Procurement of Thunder Flares and Serpent Flares in 2010

Type	No. of Purchased	Expenditure (Rs.)
Thunder Flame (Large)	217,860	16,668,937.60
Thunder Flame (Small)	108,000	06,703,125.00
Serpent Flames	126,140	11,562,936.00
<b>Total</b>	<b>452,000</b>	<b>34,934,998.60</b>

**Table 4.7:** Distribution of the Thunder Flares and Serpent Flares in 2010

Wildlife Region	Thunder flare		Serpent Flare
	Small	Big	
North-Western	63,290	28,700	43,010
Southern	36,950	12,500	20,200
Mahaweli	44,250	19,800	27,550
Eastern	33,800	18,600	20,415
Central	12,800	06,700	07,600
Yala-Bundala	10,250	03,000	04,750
<b>Total</b>	<b>201,340</b>	<b>89,300</b>	<b>123,525</b>

#### 4.2.6. Compensation Scheme

A compensation scheme approved by the cabinet is being implemented to reimburse the economic damages caused by elephants to the public. Compensation paid in 2010 is given in detail in the Table 4.8.

**Table 4.8:** Compensation Paid in 2010

Wildlife Region	No. of Cases	Total Amount Paid (Rs. Millions)
Mahaweli	722	12.98
Central	74	1.44
North Central	903	15.69
Southern	173	3.14
Yala/Bundala	49	0.95
Eastern	297	4.54
<b>Total</b>	<b>2218</b>	<b>38.74</b>



**Figure 4.7:** Crop damages by elephants



**Figure 4.8:** Property damages by elephants

#### 4.2.7. Capture and Translocation of Elephants in 2010

Twenty five marauding elephants were captured and released to Lunugamwehera and Maduru Oya National Parks. These activities were funds under Gajamituro programme.

**Table 4.9:** Capture and Translocation of Elephants in 2010

	Number of Elephant Captured				Expenditure (Rs. Million.)
	North Western	Southern	Mahaweli	Central	
2006	0	0	0	0	0.00
2007	8	5	0	0	2.75
2008	10	1	0	0	1.73
2009	7	6	3	2	3.12
2010	12	6	3	2	7.60



**Figure 4.9:** Translocation of a captured elephant

#### 4.2.8. Elephant Drives in 2010

Elephant drives are carried out to chase the elephants away from the conflict areas and to content them in protected areas. In 2010 DWC carried out 11 organized elephant drives. Table 4.10 display the year wise information of elephant drives.



**Table 4.10:** Elephant Drives in 2010

AD Regions	Number of Elephant Drives
North Western	04
Southern	02
Mahaweli	03
Yala-Bundala	01
Eastern	01



**Figure 4.10:** Elephant drives to chase elephants away from conflict areas

Table 4.11 illustrates the activities implemented under Gajamithuro Programme.

**Table 4.11:** Gajamithuro Project – Progress in 2010  
 Project budget - Rs. 900 million for 3 year  
 - Rs. 300 million for 2010

Component	Budget 2010 Rs. (Million)	Remark
1. Commitments for 2009 activities	76.5	Paid
2. Construction of new electric fences ( 76Km)	130.8	Equipment delivery completed. Fence erection in 2011
3. Development of elephants transit home at Ritigala Yan Oya	11.00	completed
4. Construction of office building and quarters for elephant control unit Baduluwela	4.30	Tender awarded - 40%
5. Purchase of communication equipments.	3.00	Tender awarded Jan 2011
6. Purchase of guns, camping equipments and other equipment for elephant control units	1.00	completed
7. Habitat enrichments within wildlife protected areas	3.00	completed
8. Purchasing of thunder flares and Serpent flare	35.00	completed

<b>Component</b>	<b>Budget 2010 Rs. (Million)</b>	<b>Remark</b>
9. Compensation for elephant damages	10.00	Completed
10. Development of Angammadilla elephant training and domestication center.	4.00	<b>75%</b> completed
12. Operation of elephant control units	4.40	completed
13. Vehicle repairs	3.00	completed
14. Project operation Expenditure.	14.00	Allocation released to field ( <b>75%</b> )
<b>Total</b>	<b>300.00</b>	

## Chapter 5

### RESEARCH & TRAINING DIVISION

#### 5.1. Main Activities and Responsibilities

- Preparation of research and training plans and associated budgets for the DWC.
- Form and maintain the research committee.
- Administration and development of DWC library.
- Organizing and conducting training programmes.
- Supervision of NWTRC.

#### 5.2. Research

DWC funds its staff for carrying out short-term research projects oriented to wildlife management. Findings of these researches proved worth applying for protected area management.

In addition DWC grant permits to conduct research projects in its protected area network and outside the protected area network. Outside research institutions and individuals get use of this opportunity. It's mandatory to get the DWC research committee approval for such a research.

Table 5.1 provide the list of short-term research projects carried out by DWC staff and Table 5.2 the collaborative research projects conducted in the wildlife protected areas during the year 2010.

**Table 5.1:** Research Studies Undertaken by DWC Staff in 2010

Serial Number	Research Topic
1	Identification of most suitable mitigation measures to minimize HEC in Wanathawilluwa, Karuwalagaswewa, Nawagaththegama, Puttalam and Anamaduwa Divisional Secretariat Divisions of Puttalam District.
2	Selection of palatable and preferred grass sp. from those distributed in Pomparippuwa area in Wilpattu National Park for wild elephants and other herbivorous.
3	Study of crop wild relatives in Ritigala Strict Natural Reserve & peripheral area
4	Finding of suitable and cost effective methods for controlling Agada in Kaudulla tank bed
5	Study of sp. diversity and abundance of fish sp. in the water bodies of Rawanaella Sanctuary.

<b>Serial Number</b>	<b>Research Topic</b>
6	An evaluation of the health status of <i>Trichogaster pectoralis</i> , (Snake Skin Gurami) of Bellanwila –Attidiya & Anavilundawa wetland sanctuaries.
7	Study on bird diversity in the forest close to Wilgamuwa and Gale Bangalawa.
8	Study on diversity and abundance of dragonflies in Rawanaella Sanctuary.
9	Examine in the potential of the Tuberculosis risk to wild elephants and wildlife officers.
10	A systematic study on mass media using two step concepts for wildlife conservation - (Pertaining to Wasgamuwa & Madurru Oya National Parks)
11	Study on the performances of wildlife officers and proposal to uplifts their performance.

**Table 5.2:** Collaborative Research Projects for 2010

<b>Serial Number</b>	<b>Research Topic</b>	<b>Collaborative Institute</b>
01	National Bird Ringing Program - Bundala National Park	Field Ornithology Group of Sri Lanka

### 5.3. Training

Training programs conducted for DWC officers are divided into two distinct categories. They are,

1. Short term special training programs.
2. Regular training programs.

In addition based on the availability, foreign trainings are also offered for the DWC staff.

#### 1. Short-term Special Training Programmes

These training programmes are specially arranged to improve the knowledge and skills of DWC officers on a wide range of subjects. Each and every category of these courses is conducted in collaboration with different training institutes or organizations. Details of such courses conducted in the year 2010 are given in the Table 5.6.



**Figure 5.1:** A short term training program in progress at NWTRC



**Figure 5.2:** Training on taxidermy for DWC officers



**Figure 5.3:** Training on firearm handling for DWC officers



**Table 5.3:** Short-term Special Training Programmes Conducted for Wildlife Officers in 2010

S.No.	Topic of Training Programs	Details	Expenditure (Rs. '000')
1	Training on Avian Influenza	100 officers in 5 programs	Sponsored by Dept. of Animal Production & Health
2	Wildlife Management for Graduate Officers	56 officers in 2 programs	160
3	Tamil Language Course	32 officers	30
4	Training on Turtle Tagging	20 officers	54
5	Training on Narcotic Prevention	30 officers	Sponsored by Dangerous Drugs Control Board
6	Fire Arms Handling & Field Operation	51 officers	395
7	Conducting a Research Project	11 Research projects were completed	418
8	Web Designing, Graphic Design, CIGAS,NIBM, & INGAFE, Contract Administration, Auto CAD, Computer Net working, Wildlife Management	37 officers	1,073
9	Research needs assessment & Training need assessment	4 meetings were held for 20 officers	117
10	Bird Ringing Program Bundala National Park	20 officers in 4 programmes	120
11	Drivers Training	20 Drivers	125
12	Training Program on GPS and Remote Sensing	25Officers	136
13	Training on Bungalow Management	25 Bungalow keepers	Funded by Moragahakanda Project
<b>Total Expenditure</b>			<b>2,628</b>

## 2. Regular Training Programmes

The regular training courses are available only for the DWC officers and training programmes conducted at National Wildlife Training and Research Centre (NWTRC) in 2010 are given in the Table 5.4.



## 5.4. National Wildlife Training and Research Center (NWTRC)

NWTRC established in 1992 at Giritale to fulfill the objective of train and develop the capacity of DWC staff, by providing high quality, professional training opportunities.

**Table 5.4:** Regular Training Programmes Conducted at NWTRC in 2010

Training Course	Target Group	Batch/es	Number of Officers Trained	Expenditure (Rs. Mn.)
Senior Certificate Course in Wildlife Management.	Wildlife Range Assistants	VII	21	2.9
Junior Certificate Course in Wildlife Management	Wildlife Guards	XXIV, XXV, XXVI	62	

- NWTRC continued Biodiversity Baseline Survey in 2010 in Udawalawa National Park, Bundala National Park, Wasgamuwa National Park, Minneriya National Park, Horton Plains National Park, and Ritigala Strict Natural Reserve and Peak Wilderness Nature Reserve.
- **Infrastructure Development in NWTRC**

Following activities were carried out to develop necessary infrastructure for trainings.

- Development of outdoor class room



**Figure 5.4:** Outdoor classroom at NWTRC

- Museum in NWTRC Declared open for the public in 2010



**Figure 5.5:** Museum at NWTRC

- In addition NWTRC conducted short term training program for school and government officers (Table 5.5).

**Table 5.5** Awareness programmes conducted by NWTRC

<b>Organization / Institute</b>	<b>Number of Programmes</b>	<b>Number of participants</b>
Schools children	16	753
Army Officers	2	270
Teachers	1	25
Samurdhi Officers	1	80

**Table 5.6** Financial Progress of NWTRC

<b>Activity</b>	<b>Expenditure (Rs. '000')</b>
Regular Training Programs	2,900
Short Term Programs	250
Development / Operational activities	7,330
<b>Total</b>	<b>10,480</b>



**Figure 5.6:** Practical session for DWC officers at NWTRC



**Figure 5.7:** Library at NWTRC



**Figure 5.8:** Computer lab at NWTRC

- **International Training**

Following are the details of foreign trainings made available for DWC staff.

**Table 5.7:** Foreign Training Programs Participated by Wildlife Officers in 2010

<b>Training Course</b>	<b>No. and Designation of Participant/s</b>	<b>Country</b>	<b>Duration</b>
Short course on environment management for developing and emerging countries	01 Deputy director	Germany	25 days
Short course on economics of tiger conservation	01 Management & Finance Assistant	USA	05 days
MFF Regional training course	01 Ranger (Grade II)	India	11 days

### 5.5. Extension, Education and Interpretation

Conservation is abortive if tried in isolation. It needs peoples’ support and appreciation. Therefore, it is necessary to have a well-informed public to encourage each and every conservation initiative that has to be implemented for the promotion of conservation.

Table 5.8 indicates the details of the Extension, Education and Interpretation conducted to the target groups such as school children, villagers and the public servants.



**Figure 5.9:** Awareness program for School Children

**Table 5.8:** Seminars, Exhibitions and Awareness Programmes Conducted in 2010.

<b>Wildlife Region / Place Conducted</b>	<b>Awareness Program &amp; Exhibitions</b>	<b>Number Conducted in 2010</b>	<b>Expenditure (Rs. '000')</b>
All Wildlife Regions	Awareness programs for School Children	60 Programs	964
All Wildlife Regions	Awareness Programmes for Government Officers	30 Programs	1,100
Western, Central & North Western Regions	Special day Programme for World Wetland day <ul style="list-style-type: none"> <li>• Western-Muthurajawela</li> <li>• Central- Horton Plains National Park</li> <li>• North Western- Anavilundawa</li> </ul>	4 Programs	180
	Exhibition <ul style="list-style-type: none"> <li>• North Western- Anuradhapura</li> <li>• Western - Colombo, Gampaha,</li> </ul>	20 Exhibitions	964
Western, Central &	World Environment day <ul style="list-style-type: none"> <li>• Central- Horton Plains National Park</li> <li>• Western - Horagolla National Park</li> </ul>	2 Programmes	115
Central	World Biodiversity day Central - Peak Wilderness	1 Programmes	30
	Deyata Kirula Exhibition at Pallekele	1 Programmes	200
North western	Exhibition during Poson Festival- Anuradhapura	1 Programmes	132
Yala Bundala	Exhibition during Kataragama- Esala Festival	1 Programmes	187
<b>Total</b>			<b>3,872</b>

## 5.6. Publications of the Department

Following publications (Table 5.9) were completed in 2010, posters were made available at the park offices for sale, and other publications were distributed among relevant offices and officers.

**Table 5.9:** Publications in 2010.

Type of Publication	No. of Copies	Expenditure (Rs. '000')
Annual wildlife magazine	2,000	75
DWC Diary	1,000	75
Posters on Dragonflies, Moths and Corals	10,000	668
Rotating Banners	20	509
<b>Total Expenditure</b>		<b>1,327</b>

## 5.7 Other Activities

- **International Conventions**

DWC has been vested with the authority to implement the following international conventions, of which Sri Lanka is signatory.

1. **CITES (the Convention on International Trade in Endangered Species of Wild Fauna and Flora)** is an international agreement between governments. Its aim is to ensure that international trade in specimens of wild animals and plants does not threaten their survivals.

**Table 5.10:** Number of CITES Permits Issued (2005-2010)

Year	Number of Permits Issued	Charge per Permit (Rs.)	Income (Rs. '000')
2005	709	500	354.5
2006	857	500	428.5
2007	768	500	384.0
2008	781	500	390.5
2009	764	500	382.0
2010	685	500	342.5

2. **The Convention on the Conservation of Migratory Species of Wild Animals (also known as CMS or Bonn Convention)** aims to conserve terrestrial, marine and avian migratory species throughout their range.

- 3. The Convention on Wetlands (Ramsar, Iran, 1971)** Also referred as the "Ramsar Convention" is an inter governmental treaty that embodies the commitments of its member countries to maintain the ecological character of their Wetlands of International Importance and to plan for the "wise use", or sustainable use, of all of the wetlands in their territories.

Therefore understanding the importance of active participation on the implementation of international conventions in Sri Lanka, DWC has taken steps to send its representatives to participate at the relevant meetings, symposia and workshops.

DWC officers were participated for the following international meetings & workshops

**Table 5.11:** International Meetings & Workshops Represented by DWC in 2010.

<b>Activity</b>	<b>Number of Participants from DWC</b>	<b>Location</b>	<b>Date</b>
Workshop for OIE National focal point for Wildlife	01	Thailand	05-10-2010 to 19-11-2010
RRCEA Information Sharing workshop on Wetland management	02	South Korea	13-09-2010 to 07-10-2010
Regional Capacity Building workshop for CITES	03	Philippines	15-06-2010 to 17-06-2010
Symposium on health and reproduction of Asian Elephants	01	Thailand	31-05-2010 to 02-06-2010
Expert group meeting on Wildlife law enforcement	02	Nepal	17-05-2010 to 19-05-2010
Sea Turtle Symposium	02	India	24-04-2010 to 30-04-2010
Workshop for the Ramsar focal points for CEPA	01	Thailand	19-04-2010 to 22-04-2010
CITES 15 <sup>th</sup> Meeting	01	Doha-Qatar	13-03-2010 to 25-03-2010
Technical meeting for the conservation and management of migratory sharks CMS	01	Philippines	08-02-2010 to 12-02-2010

## Chapter 6

### VISITOR SERVICES, ECOTOURISM & COMMUNITY OUTRICH DIVISION

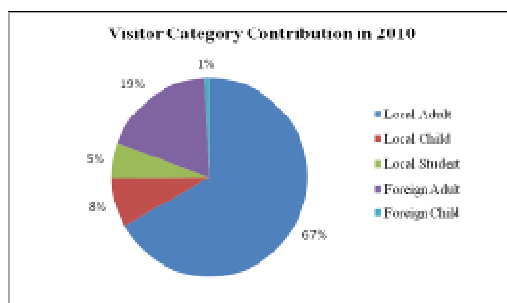
#### 6.1. Main Activities and Responsibilities

- Preparation of visitor services plans and budgets.
- Preparation of visitor centre exhibits and display materials.
- Introduction of new tourist packages.
- Diversification of tourist activities.
- Promotion and marketing of VSE activities.
- Establishment of information centers both in and outside PAs.
- To obtain proactive involvement of communities in the conservation process, through community empowerment in order to reduce dependency on Protected Areas.
- To create awareness of conservation among the general public by conducting educational & extension programs.

#### 6.1.1. Performance in detail

##### 6.1.1.1. Visitors and Revenue

- DWC earns the large part of its revenue from visitor services offered at wildlife national parks. In 2010 total revenue from visitor services is Rs. 406,854,128.00 (Table 6.1).
- Visitation to the national parks by both locals and foreigners shows peaks in between July to September (Figure 6.8). This pattern coincides with the major vacations and holidays. According to the statistics after June visitations has increased compared to beginning of the year due to peaceful condition in the country. Details pertaining to visitor numbers show that though local adults are the most visited foreign adults contributed more to the income as the rate for them are high (Figure 6.1 and Table 6.2).
- In addition, the revenue data shows that national parks viz. Yala, Horton Plains, Udawalawe and Minneriya contribute 90% of the total revenue from visitor services. (Table. 6.1).



**Figure 6.1:** Visitor Category Contribution in 2010



**Figure 6.2:** Visitors to Kumana National Park

**Table 6.1:** Annual Income from Visitor Services (2005-2010)

National Park	Annual Income (Rs)				
	2006	2007	2008	2009	2010
Ruhunu(Yala)	81,311,288.74	56,950,117.90	41,028,880.25	80,416,321.39	206,904,023.74
Horton Plains	36,445,298.74	33,246,464.13	39,530,794.43	43,709,826.92	69,882,153.69
Udawalawa	38,436,013.29	37,489,537.71	31,930,947.17	39,062,100.08	51,756,727.47
Wasgamuwa	4,765,928.60	5,229,545.50	3,063,414.32	5,021,041.15	5,207,906.36
Minneriya	17,170,741.45	14,293,984.05	22,846,218.00	28,870,708.00	33,850,184.33
Bundala	5,407,577.50	6,162,144.70	5,052,179.70	4,179,843.47	6,985,298.90
Horagolla	84,925.38	58,686.93	68,954.69	84,943.20	127,242.27
Kaudulla	6,178,877.90	7,196,623.50	4,676,223.26	9,493,776.80	22,560,356.29
Lunugamverera	111,905.90	183,575.10	21,804.00	559,593.72	1,021,259.71
Gal Oya	20,937.70	97,298.25	196,249.25	303,395.80	423,476.69
Kumana	192,292.30	0.00	0.00	0.00	3,025,595.33
Angammedilla	48,412.65	179,881.15	171,108.50	317,419.10	281,366.42
Galwaysland	0.00	59,495.80	88,792.45	148,840.20	214,924.20
Wilpattu	1,696,882.41	790.00	0.00	0.00	4,603,895.06
Maduruoya	3,739.80	21,445.90	12,369.80	9,933.95	9,717.54
<b>Total (Rs.)</b>	<b>191,874,822.36</b>	<b>161,169,590.62</b>	<b>148,687,935.82</b>	<b>212,177,743.78</b>	<b>406,854,128.00</b>



**Figure 6.3:** Visitor Center at Bundala National Park

**Figure 6.4:** Viewing Deck at Bakers Fall in Horton Plains National Park





**Table 6.2:** Visitor Summary in 2010

National Parks	Local Visitors			Foreign Visitors		Total
	Adult	Child	Student	Adult	Child	
Yala	162,848	16,111	1,006	70,768	2,812	253,545
Horton Plains	118,370	12,053	14,469	21,203	643	166,738
Udawalawa	41,000	3,272	1,480	14,866	694	61,312
Wasgamuwa	16,968	1,646	1,302	438	13	20,367
Minneriya	25,807	1,776	131	12,684	795	41,193
Bundala	5,515	405	0	3,621	82	9,623
Horagolla	2,557	173	22	1	0	2,753
Kaudulla	15,933	737	61	12,738	347	29,816
Lunugamwehera	3,403	188	10	18	2	3,621
Galoya	1,311	60	109	32	0	1,512
Kumana	15,989	1,736	1,476	389	11	19,601
Angammadilla	1,622	11	79	0	0	1,712
Galwas Land	1,135	81	55	124	5	1,400
Wilpattu	14,564	1,418	174	869	43	17,068
Maduruoya	23	0	0	0	0	23
Lahugala	160	19	0	0	0	179
ETH	78,954	22,482	21,672	4,725	487	128,320
<b>Total</b>	<b>506,159</b>	<b>62,168</b>	<b>42,046</b>	<b>142,476</b>	<b>5,934</b>	<b>758,783</b>



**Figure 6.5:** Birds in Kumana National Park



**Figure 6.6:** Camping site in Galoya National Park



**Figure 6.7:** Interpretation Center in Bundala National Park

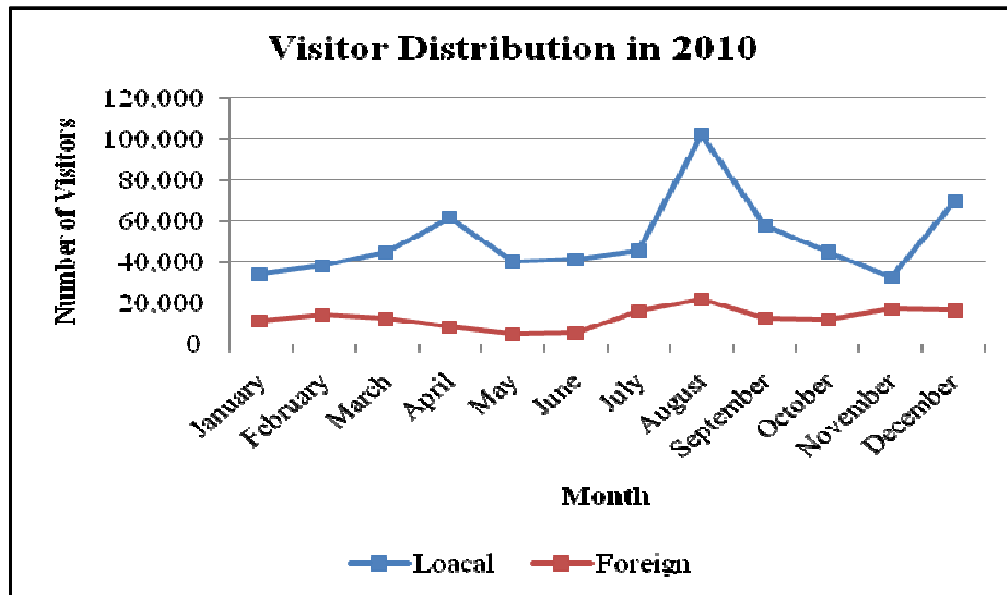


Figure 6.8: Visitor Distribution in 2010

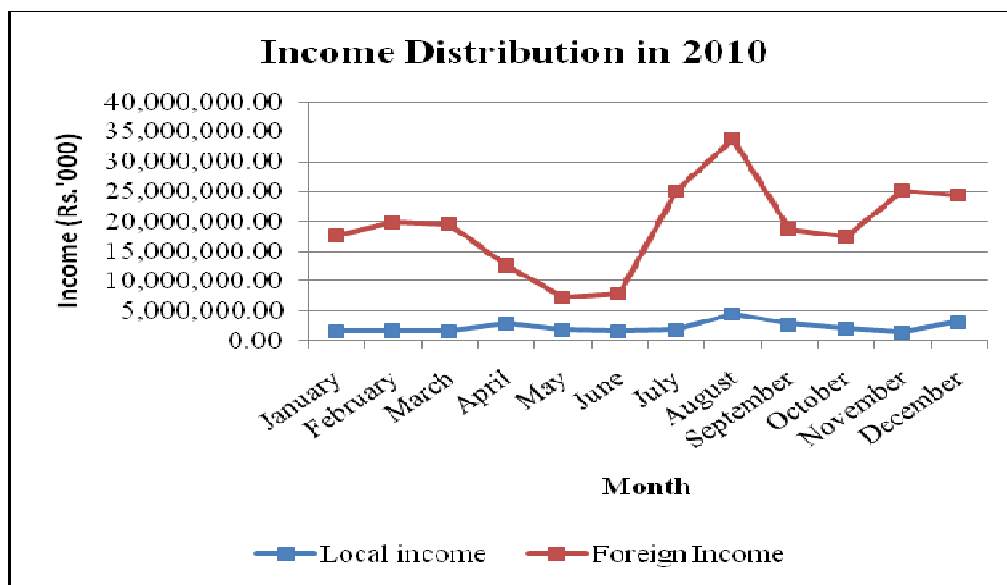


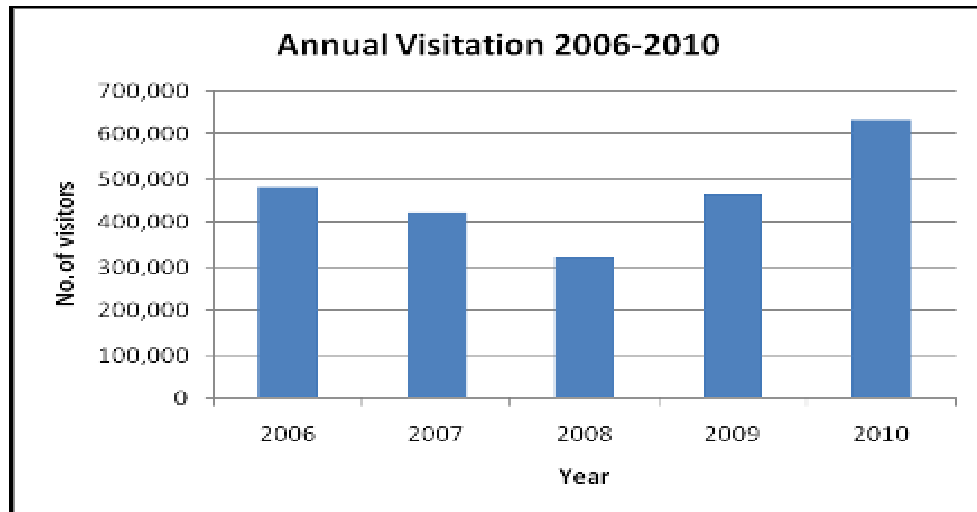
Figure 6.9: Income Distribution in 2010



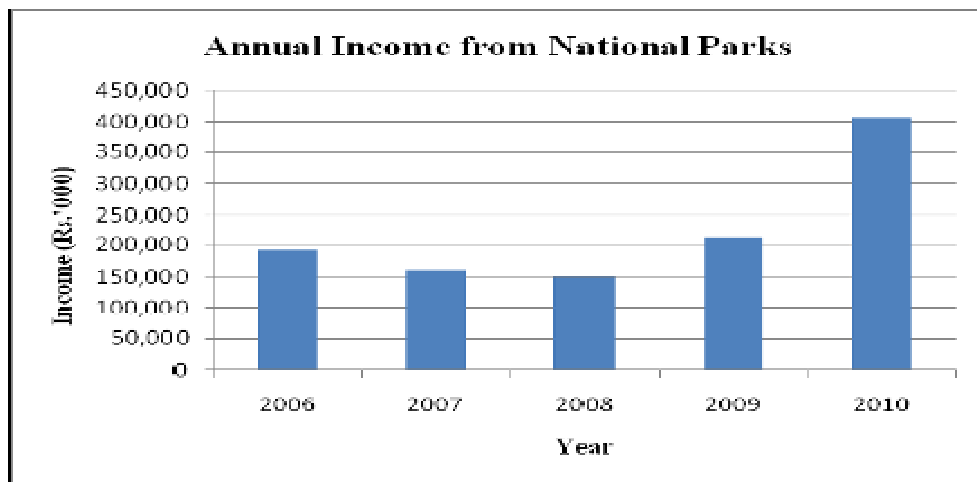
Figure 6.10: Boat Safari in Galoya National Park



Figure 6.11: Paddle boating in Kaudulla National Park



**Figure 6.12:** Annual Visitation to National Parks (2006-2010)



**Figure 6.13:** Annual Income from Visitor Services (2006-2010)



**Figure 6.14:** Jeep safari in Udawalawa National Park



**Figure 6.15:** Viewing elephants in Minneriya National Park

### 6.1.1.2. Improvement of Visitor Facilities

To improve the quality of visitor services provided at the national parks following facilities were identified as necessary and improved during last five years.

**Table 6.3:** Improvement of Visitor Facilities

Facility	Annually Added Number				
	2006	2007	2008	2009	2010
Park Bungalows	-	-	02	02	-
Camping Sites	-	-	04	02	06
Visitor Center	-	04	02	02	-
Park entrance	02	03	03	02	-
Boat Safaris	-	-	-	02	-
Nature Trail	-	-	02	-	-
Turtle beaches	-	-	01	-	-
Vehicle parks	-	02	03	02	-
Viewing Decks	-	02	01	-	-
Computerized ticketing system	-	-	02	03	03

### 6.1.1.3. Volunteer Guides

DWC mobilize the educated youths residing in the fringing villagers of wildlife protected areas as volunteer guides in national parks. These volunteer guides are deployed in interpretation activities at the national parks. Following table shows the number of volunteer guides mobilized for visitor services from 2006 to 2010.

**Table 6.4:** Number of volunteer Guides 2006-2010

Year	Number of Volunteer Guides
2006	165
2007	197
2008	189
2009	266
2010	255

### 6.2.4. Cooperate Partnerships

Several donors contributed the visitor services development activities planned and launched by the DWC. Following table illustrate those activities carried out in 2010.

**Table 6.5:** Cooperate Partnerships in 2010

Protected Area	Activities	Cost(Rs.)	Cooperate Partners	Mode of Contribution
Wilpattu National Park	Renovation of Manawila circuit Bungalow	816,985	CTC	Finance
			Sri Lanka Navy	Labour
	Renovation of Panikkawila circuit Bungalow	469,794	Rainwear Ltd.	Finance
			Sri Lanka Navy	Labour
	Renovation of Thalawila circuit Bungalow	815,704	A Baur & co Ltd	Finance and Labour
	Renovation of Kokmote circuit Bungalow		Sri Lanka Navy	Labour
	Renovation of 08 tanks Persi Bendi Wewa Palailandegahawewa, Maradammaduwwewa, Moragollawewa, Ikiriyagollawewa, Thelbeepuwewa, Mahawewa, Palukolawewa	1,780,000	Sri Lanka Army	Labour
	Renovation of 02 Water holes Walas wala Humbas wala	1,300,000	Sri Lanka Army	Labour
	833,200	Civil Security Force	Labour	
Yala National Park	Renovation of Thalgasmanakade circuit bungalow and Bungalow keeper quarters	693,860	Sri Lanka Army	Labour



**Figure 6.16:** Sri Lanka Navy engaged in repair works at Kokmote circuit bungalow in Wilpattu National Park



**Figure 6.17:** Renovated Manawila circuit bungalow in Wilpattu National Park

**Table 6.6:** Development Activities Carried Out to Improve Visitor Facilities in National Parks.

	<b>Activities</b>	<b>Remarks</b>	<b>Expenditure (Rs.'000')</b>
1	Fixing bat proof nettings for circuit bungalows in Wasgomuwa National Park	Fixed bat proof netting in Kadurupitiya circuit bungalow	5
2	Construction of 02 camping sites in Udawalawe National Park	Completed 02 camp sites in Demodara and Handagiriya	354
3	Rehabilitation of circuit bungalows Udawalawa National Park	Renovation completed Seenuggala and Thibiriyamankada circuit bungalows	386
4	Bamboo mats for Thalgahadigana & Weheragala circuit bungalow Lunugamwehera National Park	Completed	113
5	Construction of toilet at camping Sites, Yala National Park	Completed for Udapoththanna, Thalgasmankada, Nugasewana and Forward Base campsites	393
6	Construction of Jamburagala 2 Camping site in Yala National Park	Completed 2 campsites	115
7	Improvement Visitor facilities in Old Buthawa circuit bungalow	Completed	186
8	Rehabilitation of Thalgahadigana Circuit bungalow Yala National Park	Completed	481
9	Rehabilitation of Thalgasmankada bungalow keeper quarters, Yala National Park	Completed	245
10	Procurements of Bamboo mats for circuit bungalow, Yala National Park	Completed	118
11	Rehabilitation of campsite(Toilets) in Kumana National Park	Completed 5 toilets	897
12	Construction of a Camping site in Galoya National Park	Completed	277
13	Rehabilitation of water supply system in Eggaloya circuit bungalow	Completed	168
14	Rehabilitation of electricity supply system in Ekgaloya circuit bungalow	Completed	140
15	Purchasing a boat for Galoya National Park	Completed	373
16	Purchasing of outdoor concrete bench for Horagolla National park	Purchased 20 desks 05 tables 20 chairs	127
17	Linen for Information & research center Ritigala	Completed	25
18	Ticket Counter door and windows for Pigeon island National Park	Completed	25
19	Sign board for Pigeon island National Park	01 sign board	223

	<b>Activities</b>	<b>Remarks</b>	<b>Expenditure (Rs.'000')</b>
20	Visit of media persons to Wilpattu National Park	01 Visitation	44
21	Development of Galkada entrance in Maduruoya National Park	Well and tank	270
22	Wilpattu National Park canteen	01 Canteen rehabilitated	76
23	Wilpattu National Park toilets	01 Toilet completed	61
24	Platform at Mahaweli river side at Wasgamuwa National Park	Completed	94
25	Colorwashing of Mahaweli circuit bungalow	Completed	253
26	Colorwashing of Wavulabe circuit bungalow	Completed	256
27	Color washing of Kadurupitiya circuit bungalow	Completed	232
28	Safety fence at visitor center at Wasgamuwa National Park	Completed	62
29	Construction of wall at visitor center at Wasgamuwa National Park	Completed	66
30	Toilets complex in Galkada entrance, Maduruoya National Park	Completed	62
31	Observation tower at Kaudulla National Park	01 tower	222
32	Summer hut at Hunuwilagama, Wilpattu National Park	01 Samar hurt	202
33	Summer hut and toilet at Kumbukwila, Wilpattu National Park	01 Samar hurt and toilet	230
34	Camp site at Uraniya at Wilpattu National Park	01 camp site	200
35	Watch tower at Nelumvila at Wilpattu National Park	Watch tower	70
36	Bamboo mats for Wilpattu circuits bungalow	Completed	86
37	Purchasing equipment's for Wilpattu circuits bungalows	Equipments purchased	106
38	Opening ceremony for Wilpattu circuit bungalows	05 Plaque, 200 invitation cards and meals for media team	545
39	Construction of toilet for Wawul ebe campsite, Wasgamuwa National Park	Completed	132
40	Improvement of visitor facilities- Maniksorowwa circuit bungalow	Equipment purchased	97
41	Reopening ceremony for Kumana National Park	reopened	126
42	Improve visitor facility – Ritigala	Completed	25
43	Improvement of Old Buthawa circuit bungalow	Completed	185
44	Reopening ceremony for Wilpattu National Park	Reopened by Hon. Minister	71
45	Printing Invitation for Elephant Transits Home	completed	8
46	Production of the laying Foundation - Yala Visitor Center	completed	7

	Activities	Details	Expenditure (Rs.'000)
47	Interpretation materials for Horton Plains National Park	Completed	71
48	Interpretation materials for Rawana Ella Sanctuary	Completed	118
49	Field infections, Wilpattu, Wasgamuwa, Horton Plains and Yala National Parks	Completed	330
50	Fixing of Solar heating system for Ginihiriya circuit bungalow in Horton Plain National Park	Completed	683
51	Printing of ticket for Elephant Transits Home	Completed	258
52	Advertisements for Canteen tender	03 Advertisement	60
53	Preparing ticket counter in Pigeon Island National park	Completed	25
54	Plaque for new head office Building	Completed	184
55	Preparing of name board for new head office building	Completed	492
56	New flag for DWC	2 new flags	14
57	Cleaning equipment for circuit bungalow	purchased	385
58	Audio visual equipment for Visitor Service Management division	Purchased 01 LCD Television	280
59	Field Visit of Hon. minister	4 visit	174
<b>Total</b>			<b>11,513</b>



**Figure 6.18:** Reopening of Manawila circuit bungalow in Wilpattu National Park



**Figure 6.19:** Renovated Thalawila circuit bungalow in Wilpattu National Park



## 6.2. Community Outreach Unit

### 6.2.2 Performance in Detail

Activities in relation to the mandate of the division were carried out during the year to obtain proactive involvement of communities in the conservation process, through community empowerment. Table 6.7 illustrates the data and information in relation to those programmes.



**Figure 6.20:** Electric and Live Fencing with Community Participation



**Figure 6.21:** Meeting with CBO members



**Figure 6.22:** Tree Planting Programme



**Figure 6.23:** Programmes to Assist Agriculture Development in the Communities

**Table 6.7:** Progress of Community Outreach Activities in 2010

Wildlife Region	Activity	Beneficiaries	Expenditure (Rs.'000')
Central	Continuation of CBO activities - Road improvement project in Victoria, Randenigala and Rantambe Sanctuary -1 km	75 families	90
	Continuation of CBO activities - Extension of lives fence in Peak Wilderness Nature Reserve - 2.14km	CBO Members	100

<b>Wildlife Region</b>	<b>Activity</b>	<b>Beneficiaries</b>	<b>Expenditure (Rs.'000')</b>
North Western	Continuation of CBO activities in Kahalla Pallekele Sanctuary, Dennawa Village	07 community well for CBO Members	499
Mahaweli	-Two day training programme on preparation of composting for CBO near Kaudulla National Park.  -Distribution of Grafted fruit pants among CBO members, Kaudulla National Park	2 day training pro. for 60 beneficiaries 150 families	100
	One day training programme of Project preparation, planning and accounting around Wasgamuwa National Park	CBO members	18
	Construction of live fence along the boundary of Kubukanoya village near Wasgamuwa National Park - 4000 Boganwila plants in 2 km length	CBO members	258
	Continuation of CBO activities in Maduru Oya National Park- (Bee keeping project)	42 beneficiaries	149
	Continuation CBO activities (Shramadana Campaign) in Minneriya NP - 24 km Clearing electric fens, and hand over to 64 mango trees	CBO members	100
Western	CBO Meeting & Micro plan preparation at Hikkaduwa National Park	CBO members	40
South	Udawalawa National Park Live fencing- <i>Agave</i> planting 1.4 km in length	CBO members	150
Yala-Bundala	Agriculture training, trading & Shramadana at Bundala National Park	CBO members around Bundala NP	105
	'Kantha Saviya' exhibition in Matara	CBO members around Bundala NP	8
	Comprehensive program for HSBC bank officers.	HSBC staff	67
<b>Total</b>			<b>1,684</b>

All these programmes were planned to ensure proper awareness on PAs and the resources in them, empower the community in economic activities and to ensure reduced dependency on PA resources.

- HSBC bank funded clean-up projects conducted successfully in Horton plain, Yala, Kaudulla, Minneriya, Wasgamuwa, Udawalawa, Bundala national parks and Peak Wilderness Sanctuary. Table 6.8 illustrates the 2010 clean-up programme details.

**Table 6.8:** HSBC Clean-up Project 2010

<b>Protected Area</b>	<b>Activity</b>	<b>Expenditure (Rs.'000')</b>
Peak Wilderness Sanctuary	Clean-up during Sri Pada pilgrimage season	484
Horton Plains National Park	Clean-up and Nature interpretation	1,127
Kaudulla National Park	Clean-up	283
Minneriya National Park	Clean-up	231
Wasgamuwa National Park	Clean-up	358
Udawalawa National Park	Clean-up	259
Bundala National Park	Clean-up	242
	<b>Total</b>	<b>2,984</b>

## Chapter 7

### WILDLIFE HEALTH MANAGEMENT DIVISION

#### 7.1. Main Activities and Responsibilities

- Health monitoring and disease investigation activities of wild animals.
- Providing effective and rapid response Veterinary care for wild animals.
- Conducting post mortems of wild animals.
- Monitoring and enhancing the welfare of wild animals.
- Management of wild animal-human conflicts.
- Management of animal rehabilitation centers.
- Management of Elephant Transit Home (ETH).

#### 7.2. Performance in 2010

- **Treatments to wild animals**

Veterinary surgeries attached to DWC were engaged in treating injured wild animals. Treatments to injured wild elephants are a priority at the present context of wildlife conservation and Table 7.1 illustrates the statistics of treatments carried out in 2010.

**Table 7.1:** Animal Treatments in 2010

Regions	Number of Elephants	Number of Other Animals
Eastern	79	67
Mahaweli/Central	70	21
Southern	33	14
North Western	28	19
<b>Total</b>	<b>210</b>	<b>121</b>

- **Post-mortem Examinations & Treatments**

Veterinary surgeries attached to DWC were engaged in carrying out post mortem examinations of wild elephants & other animals (Table 7.2). These post mortem examinations are very important in detecting disease out breaks and health conditions.

**Table 7.2:** Post-mortem Examinations in 2010

Regions	No. of Post-mortem Examinations
Eastern	42
Mahaweli/Central	32
Southern	31
North Western	20
<b>Total</b>	<b>125</b>

- **Management of Wild Elephants**

Wildlife health Management division is the focal point of execution of the capture, translocation and collaring of the marauding wild elephants. These activities are highly important for Human Elephant Conflict management.

- GPS collared were fixed for 05 elephants in Mahaweli wildlife region in 2010. Objective of the collaring is monitoring the use of home ranges and migratory paths of elephants individually or as a herd.
- 10 Rehabilitated elephants from Elephant Transits Home at Udawalawa were released to National Parks.



**Figure 7.1:** ETH at Udawalawa



**Figure 7.2:** GPS Collaring of Wild Elephants

- Contribution of the division in implementing Annual action plan is shown in the Table 7.3.

**Table 7.3:** Progress of Action Plan Activities in 2010

<b>Wildlife Region</b>	<b>Details</b>	<b>Expenditure (Rs. '000')</b>
All Wildlife Regions	Relocation of spotted dears from urbanize Areas	209
	Import of DAN INJECT Capture gun	388
	Purchasing of drugs	470
	Purchasing of Tranquilizer drugs	190
Southern	Development of ETH Udawalawe/ releasing 10 baby elephants	343
Western	Hog deer Conservation activities in Horagolla National Park	790
Eastern	Construction of animal cages	326
<b>Total</b>		<b>2,716</b>

## Chapter 8

### ENGINEERING DIVISION

#### 8.1. Main Activities and Responsibilities

- Implementation of construction and infrastructure development plans within PA's
- Construction and maintenance of buildings outside PA's
- Construction and maintenance of PA's road network.

#### 8.2 Construction and Repairing of Field Buildings

- **Repairing of Buildings**

Repairing of field buildings were carried out as illustrated given in the Table 8.1.

**Table 8.1:** Repairing of Field Buildings in 2010

Wildlife Region	Repair/ Rehabilitation/ Renovation Activity	Expenditure (Rs. '000')
Southern	Rehabilitation of Kithulkote Range office Lunugamwehera National Park	487
	Electricity Supply for Kithulkote Range office Lunugamvehera National Park	148
	Electricity Supply for combined quarters in Lunugamvehera National Park	75
	Water Supply for Bogahawewa beat office of Lunugamvehera National Park	58
	Repairs to Water Supply for Deputy Director Office, Lunugamwehera	25
	Electricity Supply for Deputy Director Office, Lunugamwehera	8
	Renovation of water supply system for Thalgahadigana Circuit bungalow	191
	Electricity Supply for Handagiriya beat office	18
	Repairs to Bathroom in Thibiriyamankada circuit bungalow	219
	Repairs to Bathroom in Seenuggala circuit bungalow	167
Head Office	Repairs to Kandganwila beet office & combined quarters	1,141
	Renovation of Kitchen in Wana Niwahana, Horton Plains National Park	1036
Mahaweli	Mahaweli beat office in Wasgamuwa National Park	597
	Fixing of Grills for Assistant Director's office	39
	Rehabilitation of electricity supply system at Angamedila National Park	216
North Western	Assistant Director office in Anuradhapura	254
	Renovation of beat office with electric circuit at 419, Anuradhapura	163
	Renovation of Kalaoya beat office with electric circuit	92
	Mihintale Circuit Bungalow	60

<b>Wildlife Region</b>	<b>Repair/ Rehabilitation/ Renovation Activity</b>	<b>Expenditure (Rs. '000')</b>
Eastern	Rehabilitation of Bund house building in Galoya National Park	944
	Repairs to toilets in Assistant Director's Office (Eastern Region)	76
Yala-Bundala	Rehabilitation of Old Buthawa Circuit bungalow Yala National Park	345
	Rehabilitation of Ondajje Circuit Bungalow Yala National Park	217
	Rehabilitation of Ondajje Bungalow Keeper Quarters Yala National Park	76
	Rehabilitation of Heenwewa Circuit bungalow Yala National Park	225
	Rehabilitation of Heenwewa bungalow Keeper Quarters Yala National Park	103
	Rehabilitation of Park Entrance Yala National Park	46
	Fixing Electricity meters for Palatupana Buildings	190
	Repairs to water supply system for Warahana, Thalgasmankade, Heenwewa, Old Buthuwa and Mahaseelawa Circuit bungalows	118
	Rehabilitation of No. 5 Quarters at Palatupana, Yala National Park	160
	Rehabilitation of No. 6 Quarters at Palatupana, Yala National Park	155
	Rehabilitation of No. 9 Quarters at Palatupana, Yala National Park	216
	Rehabilitation of No. 10 Quarters at Palatupana, Yala National Park	131
	Rehabilitation of No. 11 Quarters at Palatupana, Yala National Park	197
	Rehabilitation of No. 18 Quarters at Palatupana, Yala National Park	113
	Rehabilitation of toilets at Palatupana, Yala National Park	76
	Repairs to water supply system for Palatupana Head Quarters Complex, Yala National Park	32
	Fixing the Solar system in Mahaseelawa Circuit Bungalow, Yala National Park	99
	Central	Rehabilitation of fence around Haggala Range Office premises
Rehabilitation of combined quarters at Horton Plains National Park		810
Repairing of toilet pit at Rawana Ella Range Office		64
Rehabilitation of toilets pit at Keerthibandarpura beat office		60
Establishment of Electricity supply system for Palabaddala Wana Niwahana		20
Rehabilitation of combined quarters No. 04 Pattipola road in Horton Plains National Park		244
Rehabilitation of combined quarters No. 03 Ohiya road in Horton Plains National Park		720
Rehabilitation of combined quarters No. 02 Ohiya road in Horton Plains National Park		255

Wildlife Region	Repair/ Rehabilitation/ Renovation Activity	Expenditure (Rs. '000')
Western	Rehabilitation of Assistant Director office in Western region.	160
	Repairing of PVC coated mesh & gate at range quarters Hikkaduwa National Park	57
	Rehabilitation of summer hut, ticketing center and Auditorium in Horagolla National Park	220
<b>Total</b>		<b>11,986</b>

- **Construction of New Buildings**

Construction of new buildings carried out during the year is given in the Table 8.2. Fund allocations from consolidated fund were utilized for these constructions.

**Table 8.2:** Construction of New Buildings in 2010

Wildlife Region	Construction Activity	Expenditure (Rs. '000')
North	Staff quarters at Kalaoya entrance of Wilpattu National Park	703
Western	Ticketing counter at Eluwankulama-Kalaoya entrance of Wilpattu National Park	894
Eastern	Elephant Control Unit (ECU) building at Baduluwela	988
<b>Total</b>		<b>2,584</b>



**Figure 8.1:** Construction of Ticketing Counter at Eluwankulama-Kalaoya Entrance



**Figure 8.2:** Construction of Staff Quarters at Kalaoya Entrance of Wilpattu National Park



- Construction of the head office building for the DWC at 811A, Jayanthipura, Battaramulla was completed and declared opened on 06<sup>th</sup> of July in 2010 by Minister for Economic Development, Hon. Basil Rajapaksha. In 2010 for the construction of this building Rs. Million 134.6 was spent from consolidated fund allocations.



**Figure 8.3:** Head Office building for DWC was ceremonially opened by Hon. Basil Rajapaksa, Minister for Economic Development

## Chapter 9

### ADMINISTRATION DIVISION

#### 9.1. Main Activities and Responsibilities

- Preparation of Human Resource and General Administration Plans.
- Recruitment of employees.
- Transfers: annual, on disciplinary grounds and exigencies.
- Service extensions, Retirement, Pensions and W&OP matters.
- Disciplinary matters.
- Payment of compensations.
- Performance appraisal and Increments.
- Construction and repairing of field buildings.

#### 9.2. New Recruitments

30 Wildlife guards were newly recruited and deployed in the field offices in 2010.

- **Promotions**

Following promotions were made effective in 2010

**Table 9.1:** Promotions in 2010

Promotion	Number Promoted
Driver Service Grade II ⌘ to Driver Service Grade II ⌘	08
Driver Service Grade II ⌘ to Driver Service Grade I	05

In addition following activities were carried out to improve the quality of department cadre.

- Recruitments procedures of Sociologist, Education officer, Interpretation Officer, Ecotourism officer and Ecologist have been forwarded to National Salary and Carder Commission and Director General (Administration) in Ministry of Public Administration for approval.
- Approval was obtained from National Salary and Carder Commission for the proposed salary scheme (PL-2-2006) of Bungalow Keepers.
- A recruitments procedure of Labors has been forwarded for approval to Ministry of Public Administration.
- Efficiency bar examination has been held for 16 Management & Financial Assistants and for 33 Drivers.
- 20 officers of department and other services were retired and retirement procedures were guided and completed.

- Compensation for injuries and gratuity payments has been paid to 01 officer each.
- Accidental leave was approved for 06 officers on medical grounds.
- Annual transfer and appeal boards were completed in time.
- Proposal for DWC cadre, recruitment procedures and salary schemes has been forwarded to National Salary and Carder Commission and discussions are in progress based on this proposal.
- FR 71 request for recruitment of 25 drivers, machine and boat operator has been forwarded to Department of Management Service.
- Distress loan, Property loan and Bicycle lone have been paid to 393, 04 and 06 officers respectively.
- Four (04) formal Inquiries were completed and 05 are in progress.
- Insurance benefits for hospital admission (79), spectacles (70), births (20), injuries (03) and deaths (02) were arranged to be paid from National Insurance trust Fund.
- To resolve problems in personal file, 108 officers were benefited from these services.
- Applications were forwarded to Director General of Combined Service for absorbed qualified staff members to the newly established Information & Communication Service.

## Chapter 10

### FINANCE DIVISION

The Finance division of the Department of Wildlife Conservation coordinates all financial activities applicable to the DWC. The division coordinated the institutions of the Ministry of Finance such as Department of Public Finance, Department of State Accounts, Department of National Budget, Department of Fiscal Policy and Revenue, Department of Treasury Operations.

#### 10.1. Main Activities and Responsibilities

- Planning, implementing, controlling and accounting of annual revenue and expenditure budget of the department.
- Financial control over imprested receipts from treasury and various institutions.
- Classification and submission of financial information to the general treasury, the ministry of environment and natural resources and to the other divisions of the department.
- Submission of annual accounts, appropriation account, revenue account, public officers' advance account and the wildlife preservation fund account administered by the DWC.

#### 10.2 Purchasing of Furniture and Office Equipment

- New Furniture and office equipment were purchased for new head office building, regional wildlife offices & wildlife bungalows.

**Table 10.1:** Expenditure for Furniture and Office Equipment in 2010

Activity	Expenditure (Rs. '000')
Furniture for new head office building	16,304
Furniture for regional offices	2,496
<b>Total</b>	<b>18,800</b>



**Figure 10.1:** Newly furnished wildlife bungalows

- In addition various machinery and equipment were purchased (Rs. Million 0.284) for head office and wildlife regional offices in support of implementing for effective conservation activities.

### 10.3. Wildlife Preservation Fund (WPF)

WPF was created in 1967 with the mandate of supporting wildlife conservation in Sri Lanka. Objectives of WPF, as gazette, are as follows.

1. To enhance the corporation of public on protecting & conserving wild animals.
2. Maintenance of protected areas declared for wildlife conservation.
3. Payments of rewards to the wildlife officers & public appreciation for their admirable contribution to wildlife conservation.
4. Payment of rewards to informants against wildlife crimes.

Table 11.1 shows that the total annual contribution of WPF for wildlife management as per mandate. Table 10.4 illustrates the detailed accounts of WPF for the year 2010.

**Table 10.2:** Expenditure of Wildlife Preservation Fund 2005 to 2010

Year	Estimate (Rs. '000')	Expenditure (Rs. '000')	% Expenditure
2005	56	53	95%
2006	58	57	98%
2007	75	56	75%
2008	112	81	72%
2009	134	99	74%
2010	161	121	75%

### 10.4. Budget Details

Budget details of the Department in relation to the year 2010 are as follows.

Head – 284. Department of Wildlife Conservation  
 Programme: 01 Operational Activities  
 Project: 01 – Administration and Establishment Services

Following details indicates the performance of the department in relation to expenditure.

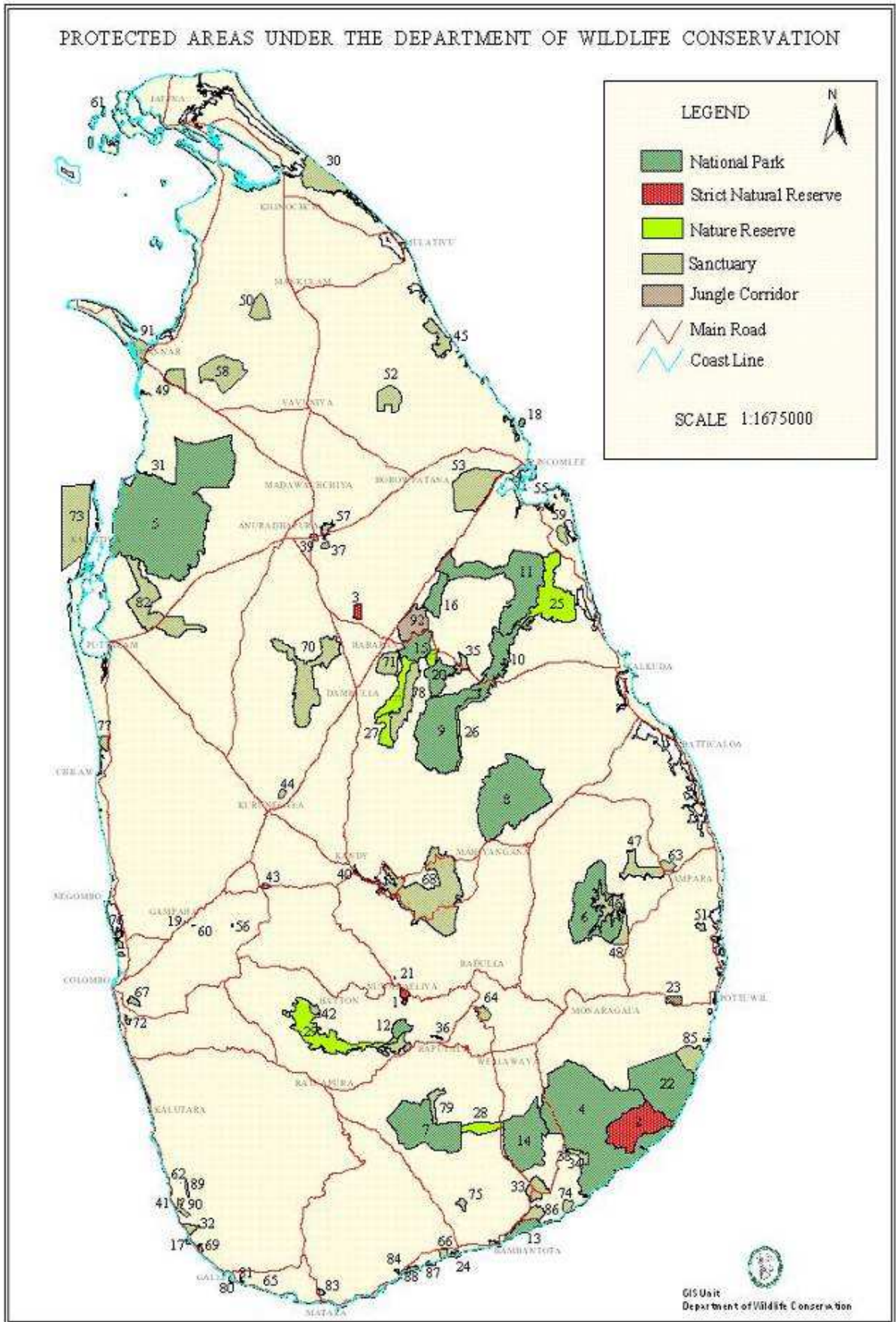
**Table 10.3:** Budget Details of the Department in 2010

Rs. '000'

sub Projects	object code	Items	Fund	Category/Object Title	Estimate 2010	Expenditure (Rs. '000') 2010
				<b>Capital Expenditure Total</b>	<b>552,950</b>	<b>518,429</b>
				<b>Rehabilitation and Improvement of capital Assets</b>	<b>73,250</b>	<b>65,580</b>
	2001		11	Building and Structures	64,750	59,854
		1	11	Establishment of Protected Area Network	7,000	4,052
		2	11	Ecotourism Management	10,000	14,312
		3	11	Eco-development in and out Protected Areas	1,750	1,651
		4	11	Conservation of Endangered species	4,000	2,647
		5	11	Information and Communication System	2,000	3,590
		6	11	Rehabilitation of Road Network	10,000	8,825
		7	11	Rehabilitation of Water Bodies	10,000	2,370
		8	11	Other(Buildings)	20,000	22,407
		9	11	Wildlife Trust TREE Center Upgrading Programme	-	-
	2002			Plant, Machinery and Equipment	2,000	1,282
	2003			Vehicles	6,500	4,445
				<b>Acquisition of Capital Assets</b>	<b>28,850</b>	<b>40,729</b>
	2101		11	Vehicles	-	-
	2102		11	Furniture and other Equipment	7,500	18,839
	2103		11	Plant, Machinery	850	284
	2104		11	Buildings and Structures	10,000	14,234
	2105		11	<b>Land and Land Improvements</b>	<b>10,500</b>	<b>7,372</b>
		1	11	Habitat Enrichment for Wildlife	7,000	4,455
		2	11	Establishment of Road Network in Protected Areas	3,500	2,917
	2401			<b>Capacity Building</b>	<b>25,850</b>	<b>25,049</b>
			11	Training and capacity Building	25,850	25,049
		1	11	Training and Research	7,000	2,575
		2	11	Extension, Education and interpretation	2,000	2,275
		3	11	Conservation, Education, interpretation	2,350	2,596
		4		Protection and Law Enforcement	6,500	7,169
		5	11	National Wildlife Training Center Girithale	8,000	10,434
				<b>Construction of New Office Building for the Department of Wildlife Conservation(DWC)</b>	<b>125,000</b>	<b>134,623</b>
1				Acquisition of Capital Assets	125,000	134,623
	2104		11	Building and Structure	125,000	134,623
	2105		11	Land and Land Improvements		
2				<b>Construction of Elephants Project "GAJA MITHURO"</b>	<b>300,000</b>	<b>252,447</b>
	2104		11	Building and Structure	300,000	252,447

**Table 10.4:** Receipt and Payment Account of Wildlife Preservation Fund up to 31-12-2010

Description	2010	(Rs.)
<b>Balance on as 2010.01.01</b>		<b>156,499,032.16</b>
<b>Receipt</b>		
Park entry free	132,890,700.18	
Entry fee ETH	3,815,271.68	
Service charges	53,054,894.94	
Vehicles entry charges	24,539,922.00	
Poster parent scheme	3,421,432.28	
Fines imposed by courts	10,903,864.25	
Donations	423,856.20	
Filming charges in National Parks	701,952.41	
Books, Magazine and Periodicals	795,768.08	
Import & Export Permits for parts of Animal & Plant	385,833.10	
Linen charges at circuit bungalows	1,303,150.00	
Campsite occupation frees	1,940,815.85	
Registration of domestic elephants	110,370.00	
Fishery permits	76,250.00	
Timber & Fuel wood sales	-	
Sands sales	19,067,077.50	
Registration of tasks	18,250.00	
		<b>253,449,408.47</b>
		<b>409,948,440.63</b>
<b>Payment</b>		
Stationery		
Maintenance of buildings & machinery		
Service charges	30,198,234.31	
Compensation of deaths and injuries of wildlife officers	500,000.00	
Allowance for volunteer guides	16,730,873.00	
Animal foods	20,112,965.74	
Compensation to damages by Wild Animals	3,372,750.00	
Fuel	2,955,444.73	
Radio Communication Network Frequency Charge	2,916,990.54	
Incentives	1,662,204.51	
Elephant drives	9,827,087.00	
Medical supplies	864,084.94	
Traveling claims	12,067,325.86	
Payment of electricity & water supply bills	3,904,361.60	
Gun license	201,600.00	
Conservation of endangers species	1,108,797.50	
Burnt of elephant carves	495,630.00	
Legal charges	67,090.00	
Laundry charges	166,459.00	
Repairing of vehicles	5,241,399.39	
Salary for casual labours	2,901,210.00	
Purchasing of thunder & serpent flare	4,161,741.60	
Charges of funeral expenses	1,490,000.00	
Other expenditures	281,337.50	
		<b>121,227,587.22</b>
<b>Balance as on 31-12-2010</b>		<b>288,720,853.41</b>





## Wildlife Protected Areas in Sri Lanka

S/N	Strict Natural Reserve	Area (ha)	Date of Declaration
1	Hakgala	1,142	1938.02.25
2	Yala	28,905	1938.03.01
3	Ritigala	1,528	1941.11.07
	<b>Sub Total</b>	<b>31,575</b>	

S/N	National Park	Area (ha)	Date of Declaration
4	Ruhuna (Yala) N.P.	97,881	1938.02.25
5	Wilpattu	131,667	1938.02.25
6	Galoya	25,900	1954.02.12
7	Udawalawa	30,821	1972.06.30
8	Maduru Oya	58,850	1983.11.09
9	Wasgamawa	37,063	1984.08.07
10	Floodplains	17,350	1984.08.08
11	Somawathiya	37,646	1986.09.02
12	Horton plains	3,160	1988.03.16
13	Bundala	6,216	1993.01.04
14	Lunugamwehera	23,499	1995.12.08
15	Minneriaya	8,889	1997.08.12
16	Kaudulla	6,900	2002.04.01
17	Hikkaduwa	102	2002.10.08
18	Pigeon Island	471	2003.06.04
19	Horagolla	13	2004.07.28
20	Angammadilla	7,529	2006.06.06
21	Galwaysland	292	2006.06.18
22	Yala East (Kumana)	35,665	2006.07.05
23	Lahugala- Kithulana	5,131	2006.07.20
24	Ussangoda	349	2010.05.06
	<b>Sub Total</b>	<b>526,505</b>	

S/N	Nature Reserve	Area (ha)	Date of Declaration
25	Trikonamadu	25,019	1986.10.24
26	Riverine	824	1991.07.31
27	Minneriya-Giritale		
	I. Block 2	1,924	1993.06.25
	II. Block 3	4,745	1995.07.07
	III. Block 4	8,336	1997.09.01
28	Wetahirakanda	3,229	2002.06.07
29	Peak Wilderness	12,979	2007.09.21
	<b>Sub Total</b>	<b>32,037</b>	

S/N	Sanctuary	Area (ha)	Date of Declaration
30	Chundikulam	11,149	1938.02.25
31	Willpattu north	632	1938.02.25
32	Telwatta	1,425	1938.02.25
33	Weerawila Tissa	4,164	1938.05.27
34	Kataragama	1,004	1938.05.27
35	Polonnaruwa	1,522	1938.05.27
36	Tangamalai	132	1938.05.27
37	Mihintale	1,000	1938.05.27
38	Kataragama	838	1938.05.27
39	Anuradhapura	3,501	1938.05.27
40	Udawattakelle	104	1938.07.29
41	Rocky Islands –(Ambalangoda)	1	1940.10.25
42	Peak wilderness	22,379	1940.10.25
43	Kuruluके	113	1941.03.14
44	Welhilla ketagilla	134	1949.02.18
45	Kokilai	1,995	1954.05.18
46	Senanayeka samudraya	9,324	1954.02.12
47	Galoya -North East (Ampara)	12,432	1954.02.12
48	Galoya -South West	15,281	1954.02.12
49	Giant's Tank	4,330	1954.09.24
50	Vavunikulam	4,856	1963.06.21
51	Sagaman	616	1963.06.21
52	Padawiya Tank	6,475	1963.06.21
53	Navel Headworks	18,130	1963.06.21
54	Great sobers Island	65	1963.06.21
55	Little sobers Island	7	1963.06.21
56	Kimbulwana oya	497	1963.06.21
57	Mahakandarawa	5,193	1966.12.09
58	Madu road	26,677	1968.06.28
59	Seruwila Allei	15,540	1970.10.09
60	Maimbulkanda-Nittabuwa	24	1972.10.31
61	Paraitivu	970	1973.05.18
62	Honduwa Island	9	1973.11.19
63	Buddangala	1,841	1974.11.01
64	Rawana ella	1,932	1979.05.18
65	Medin Duwa	1	1980.06.06
66	Kalamatiya	2,525	1984.06.28
67	Sri jayawardenapura	449	1985.01.09
68	Victoria Randenigala Rantambe	42,087	1987.01.30
69	Paraputuwa Nuns Island	190	1988.08.17
70	Kahalla-pallekale	21,690	1989.07.01
71	Sigiriya	5,099	1990.01.26
72	Bellanvila- Attidiya	372	1990.07.25
73	Bar Reef Island (welipara)	30,670	1992.04.03
74	Nimalawa	1,066	1993.02.18
75	Madunagala	995	1993.06.30
76	Muthiraja wela Block I	1,029	1996.10.31
	Block II	257	1996.10.31

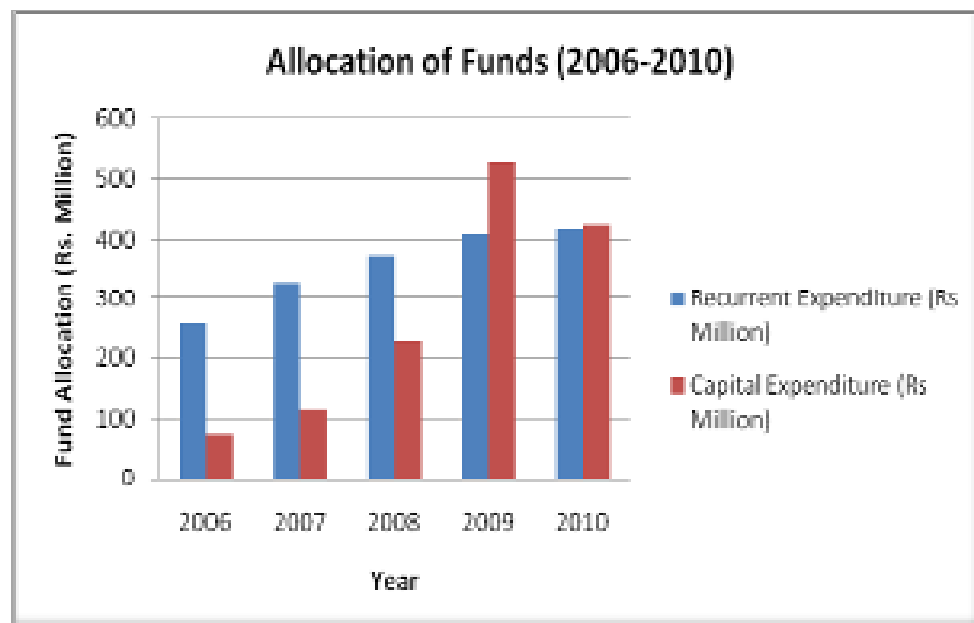
<b>S/N</b>	<b>Sanctuary</b>	<b>Area (ha)</b>	<b>Date of Declaration</b>
77	Anavilundawa	1,397	1997.06.11
78	Elahara Giritale	14,035	2000.01.13
79	Dahaiyagala	26,851	2002.06.07
80	Rumassala	171	2003.01.03
81	Elluwilayaya	186	2003.09.11
82	Tabbowa	2,193	2002.07.19
83	Kirala kelle	310	2003.09.08
84	Kiramaoya	5	2004.10.06
85	Kudummbigala- Panama	6,534	2006.02.20
86	Wilmanna	3,340	2006.06.30
87	Godawaya	232	2006.05.25
88	Rekawa	271	2006.05.25
89	Maduganga	2,300	2006.07.17
90	Madampawila	1,217.75	2007.09.21
91	Vankellei	4,839	2008.09.08
	<b>Sub Total</b>	<b>344,603.75</b>	

<b>S/N</b>	<b>Jungle Corridor</b>	<b>Area (ha)</b>	<b>Date of Declaration</b>
92	Kaudulla-Minneriya	8,777	2004.06.01
	<b>Sub Total</b>	<b>8,777</b>	

## Fund Allocations & Expenditure (2006-2010)

### Consolidated Fund

Year	Allocation by Fund Category		Total (Rs Million)	% Expenditure	
	Recurrent Expenditure (Rs Million)	Capital Expenditure (Rs Million)		Recurrent	Capital
2006	257.4	73.0	330.4	99.0	93.0
2007	326.2	115.8	442.0	97.9	81.3
2008	373.8	229.1	602.9	94.0	68.0
2009	410.6	526.8	937.4	92.4	78.0
2010	417.8	423.8	841.6	95.6	93.8



CATEGORY : APPROPRIATION ACCOUNT(2010)											Form : A	
Description	Financial Performance (Rs. In '000)					Physical Performance						
	Current Year		Previous Year	Variations Over		Output(Service/Goods)		Current Year's output		Previous Years	Variations Over	
	Budgeted	Actual	Actual	Budgeted	Previous Year Actual	Type/class	Measure	Targeted	Actual	Output	Targeted	Previous Years Actual
<b>Programme Title and No:</b> Wildlife Conservation <b>Project Title and No. :</b> 01. Administration & Establishment Services & 02. Protected Area Management & Wildlife Conservation <b>Expenditure :</b> Recurrent Expenditure * Personal Emoluments * Other Recurrent Total  Capital Expenditure  <b>Total Expenditure</b>												
	327,783	311,215	292,659	(16,568)	18,556	Personal Emoluments	No..of Employees	1735	1200	1200	-535	0
	125,280	122,053	105,026	(3,227)	17,027							
	453,063	433,268	397,685	(19,795)	35,583							
	552,950	518,429	433,578	(34,521)	84,851							
	<b>1,006,013</b>	<b>951,697</b>	<b>831,263</b>	<b>(54,316)</b>	<b>120,434</b>							

CATEGORY : REVENUE ACCOUNTS(2010)								Form : B						
Financial Performance (Rs. In '000)								Physical Performance						
Description	Arrears of Revenue as at 01.01.2009	Current Year		Previous Years Actual	Variations Over		Arrears of Revenue as at 31.12.2009	Output(Service/Goods)		Current Year's Output		Previous Years Actual	Variations Over	
		Budgeted	Actual		Budgeted	Previous Years Actual		Type/class	Measure	Targeted	Actual		Targeted	Previous Years Actual
Revenue Codes														
20.03.02.06	Nil	7,000	10,375	5,294	3,375	5,081	Nil	Foreign Visitors	No. of Visitors		907,193	70,691	-	(836,502)
								Local Visitors	No. of Visitors		610,373	344,525	-	(265,848)
Total Revenue		7,000	10,375	5,294	3,375	5,081								

CATEGORY : ADVANCE ACCOUNTS 2010											Form : C	
Description	Financial Performance (Rs. In '000) Rs. 000					Physical Performance						
	Current Year		Previous Year Actual	Variations Over		Output(Service/Goods)		Current Year's output		Previous Years Output Actual	Variations Over	
	Prescribed	Actual		Prescribed	Previous Year Actual	Type/class	Measure	Targeted	Actual		Targeted	Previous Years Actual
<b>Type:</b> Advance Account						Distress Loans	Applicant	400	379	305	(21)	74
						Property Loans	Applicant	-	-	-	-	-
<b>Account Title and No.:</b> Public Officers Advance Account No 28401						Vehicle Loans	Applicant	-	-	-	-	-
						Indebt Loans	Applicant	-	-	-	-	-
						Bicycle Loans	Applicant	12	8	7	(4)	1
- Maximum Expenditure Limit	45,000	42,318	32,489	(2,682)	9,829	Festival Loans	Applicant	1200	990	967	(210)	23
Minimum Receipt Limit	24,000	28,548	29,244	4,548	(696)	Tsunami / Special Loans	Applicant	-	74	68	-	6
Maximum Debit Limit Maximum Liability	127,000	102,484	86,495	(24,516)	15,989							

CATEGORY : FUND ACCOUNTS (2010)						Form : D						
Description	Financial Performance (Rs. '000)					Physical Performance						
	Current Year		Previous Year Actual	Variations Over		Output(Service/Goods)		Current Year's output		Previous Years Output	Variations Over	
	Budgeted	Actual		Budgetd	Previous Year Actual	Type/class	Measure	Targeted	Actual		Targeted	Previous Years Actual
<b>Type:</b> Fund Account <b>Account Title and No.</b> Wildlife Preservation fund 6000.0.0.6.20						Foreign Visitors	No. of Visitors		907,193	70,691	-	836,502
						Local Visitors	No. of Visitors		610,373	344,525	-	265,848
						Raids	Cases filed		611	796	-	(185)
						Tracker Fees	No. of people		226	266	-	(40)
<b>Revenue</b>						Elephant drive	No..of Elephants		428	216	-	212
Operational	197,850	292,452	210,225	94,602	82,227	Registration of Guns	No..of Guns		561	486	-	75
Non Operational						Elephant burnt	No..of Elephants		74	79	-	(5)
	197,850	292,452	210,225	94,602	82,227	Radio licenses	No. of Units		343	378	-	(35)
						Service charge	No..of Employees		1263	1272	-	(9)
Recurrent Expenditure : Operational : Non Operational	161,087	124,748	113,691	(36,339)	11,057							
Total Recurrent Expenditure	161,087	124,748	113,691	(36,339)	11,057							
Income Over Expenditure	36,763	167,704	96,534	(130,941)	71,170							
Capital Expenditure	-	-	4,093	-	4,093							
Net Worth	446,059	695,953	528,259	(249,894)	167,694							



***Prepared by :***

***Planning & ICT Division, Department of Wildlife Conservation***

***Telephone: 0112888585      email : [director@dwc.gov.lk](mailto:director@dwc.gov.lk)***

***Fax: 0112 883355      Web : [www.dwc.gov.lk](http://www.dwc.gov.lk)***