



கார்டு ஸாதின லார்டாவ - 2011
வனரீலி ஸர்வரண டெபார்ட்மென்டுவ
செயலாற்றுகை அறிக்கை - 2011
வனசீவராசிகள் பாதுகாப்பு திணைக்களம்
Performance Report – 2011
Department of Wildlife Conservation





Contents

	Page
Introduction	1
Planning Division	4
Natural Resources Management Division	7
Protection and Law Enforcement Division	11
Elephant Conservation Division	14
Research & Training Division	23
Visitor Services, Eco-tourisms and Community Outreach Division	31
Wildlife Health	40
Engineering Services Division	42
Administration Division	47
Finance Division	48
Annexes	57

Performance Report - 2011 Department of Wildlife Conservation



List of Tables

Table 1.1: Special Project Proposals Qualified for Funding	5
Table 1.2 : Progress of Action Plan Activities in 2011.	6
Table 2.1: Boundary Demarcation in 2011	7
Table 2.2: Establishment / Rehabilitation of Sign Boards in 2011	8
Table 2.3: Management of Grasslands in Wildlife Regions in 2011	9
Table 2.4: Removal of Invasive Species in 2011	9
Table 2.5: Wildlife Conservation Activities under Moragahakanda Project in 2011	10
Table 2.6: Tree Planting Programmes in 2011	10
Table 2.7: Wildlife Conservation Activities under Moragahakanda Project in 2011	10
Table 3.1: Number of Cases Prosecuted in 2011	12
Table 3.2: Progress of Action Plan Activities for 2011	13
Table 4.1: Regional Distribution of Elephant Deaths from 2007-2011	14
Table 4.2: Regional Distribution of Human Deaths	15
Table 4.3: Regional Distribution of Injuries to Human due to Elephant Attacks (2007-2011)	16
Table 4.4: Regional Distribution of Property Damages (2007-2011)	17
Table 4.5: New Electric Fences (EF) Erected in 2011	19
Table 4.6: Procurement of Thunder Flares and Serpent Flares in 2011	19
Table 4.7: Distribution of the Thunder Flares and Serpent Flares in 2011	20
Table 4.8: Compensation Paid in 2011	20
Table 4.9: Capture and Translocation of Elephants (2007-2011)	20
Table 4.10: : Gajamithuro Project – Progress in 2011	21-22
Table 4.11: Elephant Drives in 2011	22
Table 5.1: Research Studies Undertaken by DWC Staff in 2011	23
Table 5.2: Collaborative Research Projects for 2012	24
Table 5.3: Special short term Training programmes conducted for Wildlife Officers in 2011	25
Table 5.4: Regular Training Programmes Conducted at NWTRC in 2011	26
Table 5.5 Financial Progress of NWTRC	26
Table 5.6: Foreign Training Programs Participated by Wildlife Officers in 2011	27
Table 5.7: Seminars, Exhibitions and Awareness Programmes Conducted in 2011	28
Table 5.8: Publications in 2011	29
Table 5.9: Number of CITES Permits Issued (2007-2011)	29

Table 5.10: International Meetings & Workshops Represented by DWC in 2011	30
Table 6.1: Annual Income from Visitor Services (2007-2011)	32
Table 6.2: Visitor Summery in 2011	33
Table 6.3: Improvement of Visitor Facilities	35
Table 6.4: Number of volunteer Guides 2007-2011	35
Table 6.5: Development Activities Carried Out to Improve Visitor Facilities in National Parks.	36-37
Table 6.6: Progress of Community Outreach Activities in 2011	38
Table 6.7: HSBC Clean-up Project 2011	39
Table 7.1: Animal Treatments in 2011	40
Table 7.2: Post-mortem Examinations in 2011	40
Table 7.3: Progress of Action Plan Activities in 2011	41
Table 8.1: Repairing of Field Buildings in 2011	42-43
Table 8.2: Construction of New Buildings in 2011	44-45
Table 8.3: Rehabilitation and Construction of Water Bodies in 2011	45
Table 8.4: Rehabilitation of PA Road Network in 2011	46
Table 9.1: Promotions in 2010	47
Table 10.1: Expenditure for Furniture and Office Equipment in 2011	48
Table 10.2: Expenditure of Wildlife Preservation Fund 2005 to 2011	49
Table 10.3: Budget Details of the Department in 2011	50
Table 10.4: Receipt and Payment Account of Wildlife Preservation Fund up to 31-12-2011	51

List of Figures

Figure 3.1: Number of Cases Prosecuted (2007- 2011)	12
Figure 3.2: Revenue Generated from Fines imposed by courts (2007- 2011)	12
Figure 4.1: Regional Distribution of Elephant Deaths (2007-2011)	15
Figure 4.2: Regional Distribution of Human Deaths (2007-2011)	15
Figure 4.3: Regional Distribution of Injuries to Human due to Elephant Attacks (2007-2011)	16
Figure 4.4: Regional Distribution of Property Damages (2007-2011)	17
Figure 6.1: Visitor Category Contribution in 2011	31
Figure 6.2: Visitor Distribution in 2011	32
Figure 6.3: Annual Visitation to National Parks (2005-2011)	34
Figure 6.4: Annual Income from Visitor Services (2004-2011)	34

List of Annexes

Annex 01: Protected areas under department of wild life conservation	52
Annex 02: Fund allocations & expenditure (2007-2011)	56
Annex 03: Category: Appropriation accounts (2011)	57
Annex 04: Category: Revenue accounts (2011)	58
Annex 05: Category: Advance accounts (2011)	

Introduction

Conservation of Sri Lanka's irreplaceable indigenous flora and fauna together with their natural habitats is a national priority. The Department of Wildlife Conservation (DWC) is the principle government institution responsible for the protection of wildlife resources of the country over its entire land and sea territories. DWC also bears the legal authority to establish and manage the network of Wildlife Protected Areas (WLPAs) of the country, which at present exceeds a total area of 8500 km²; 13% of Sri Lanka's land surface. Following table illustrates the categories and the quantities of wildlife protected areas that have been declared by Department of Wildlife Conservation. Annex 01 provides comprehensive account on wildlife protected areas providing a map and the details including the name of PA, extent and the location.

Category of PA		Number of PAs Declared up to date
National Reserves	Strict Natural Reserve	03
	National Park	22
	Nature Reserve	05
	Jungle Corridors	01
Total		31
Sanctuaries		64
Grand Total		95

Apart from preserving the biological resources rich in diversity together with their natural habitats, the network of WLPAs protects almost all the large scale reservoirs of the country which provide water for agriculture and generation of hydro-power. Since 1950s, all the reservoirs in the Gal Oya Valley including Senanayake Samudra, all Mahaweli reservoirs and those fed with Mahaweli water in the Central and North Central Provinces, all the reservoirs in the Southern Part of the country including Udawalawa, Mau Ara, Lunugamvehera and Veheragala, are protected together with their catchment areas, within the network of WLPAs. Total number of reservoirs which provides water for agriculture and Hydro-power generation within the WLPAs exceeds 40.

Upper catchments of the major rivers of Sri Lanka, viz. Mahaweli, Kalu, Kelani and Walawe also fall within the Wildlife reserves such as Peak Wilderness Nature Reserve and Horton Plains National Park.

Having the tenure of Sri Lanka's most precious resource, natural ecosystems, DWC is taking the responsibility of professional management and conservation of those WLPAs making mission of DWC guided by its vision.

Vision: The conservation of wildlife heritage for present and future generations.

Mission: Working with others to ensure conservation of wildlife heritage through professional management.

As per the guidelines provided in the National Wildlife Policy of Sri Lanka, the management of the WLPAs which contributes immensely to the National Economy of the country is done in line with the strategies, plans and programmes of national and international standards.

Current global vision of protected area management emphasizes science in decision making , efficient communication and management of complex information , long term management plans to guide and balance conservation and development efforts, provision of varied recreational and educational opportunities for visitors, and linking local communities through participation and benefit-sharing.

Currently the Department is embarked on an effort to upgrade its operations in several fronts.

- To develop national strategic plans and programmes for conservation of wildlife resources, keeping in line with the appropriate national and international policies.
- To protect representative samples of all eco-systems, including sites of special scientific interest; expand and link protected areas wherever necessary to ensure the survival of viable populations of wildlife.
- To identify, classify and manage all protected areas, based on appreciate scientific research and regulations, and then monitor the status of each protected area.
- To prepare and implement recovery plans for endangered species.
- To facilitate eco-tourism in PAs, with due consideration to the conservation of the ecosystems concerned.
- To implement the Fauna and Flora Protection Ordinance and other regulations effectively, to minimize illegal exploitation of wildlife resources, within and outside WLPAs.
- To encourage scientific research relevant to the management of the wildlife resources in Sri Lanka.
- To strengthen the capabilities of the staff of the DWC through the provision of training, encouragement and motivation.
- To promote conservation through public education and awareness programmes.
- To encourage public participation in conservation activities and assist the communities living around PAs to improve their socio- economic conditions, in order to reduce their dependency on PA resources.

Department of Wildlife Conservation is operating under 08(eight) technical divisions at the Head Office level *viz*; Planning and Information Communication Technology Division, Natural Resources Management, Elephant Conservation, Visitor Services Eco-tourism & Community Outreach, Research and Training, Protection & Law Enforcement and Wildlife Health. In addition Finance Division, Administration Division and Engineering Division perform supporting duties of the technical divisions of department. Details of the activities implemented by the divisions aforementioned are given in the Chapters 01 to 11.

The action plan was implemented by 07 Assistant Director Regions *viz*; Central, Eastern, Mahaweli, North Western, Southern, Western and Yala-Bundala. Under these regions wildlife protected areas were managed to achieve conservation goals and development targets.

Under the decentralization program of DWC two Regional Deputy Director Offices were established in Anuradhapura to supervise Mahaweli and North Western regions and Lunugamwehera to supervise Yala-Bundala and Southern regions.

National Wildlife Training & Research Centre at Giritale conducted regular training programmes to improve skills and knowledge and to mould the attitude of wildlife officer on favors of wildlife management.

In the year 2011 funds (Rs. 944 Million) were received from Consolidated Fund for implementing the action plan of the year. In addition funds from Wildlife Preservation Fund, Moragahakanda and Veheragala irrigation projects and donations from donors and donor agencies were also disbursed for planned conservation activities.

Year end account show that the healthy financial progress; 99 % of recurrent expenditure and 78 % of capital expenditure (Annex 2)

Chapter 1

PLANNING & ICT DIVISION

1.1. Main Activities and Responsibilities

- Preparation of annual action plan for the DWC.
- Preparation of Project Proposal for special development and conservation activities.
- Monitoring the implementation progress of annual action plan.
- Preparation of progress reports monthly, quarterly and annually.
- Preparation of annual performance report.
- Updating and administration of DWC web site; www.dwc.gov.lk
- Monitoring, upgrading and maintenance of island wide radio communication system of the DWC.
- Monitoring, upgrading and maintenance of PABX.
- Administration and maintenance of Wide Area Network (WAN) of DWC.
- Automation of National Parks.
- Administration of GIS unit.

1.2 Performance 2011

Following major activities were carried out during the year 2011.

- **Preparation of Action Plan**

Work program including Action Plan of the Department for the year 2012 was prepared and submitted to Ministry of Agrarian Services and Wildlife.

- **Progress Reporting**

Monthly and quarterly progress reports were sent in time as per the schedule to Ministry of Agrarian Services and Wildlife on the progress of implementation of activities under capital budget including 'Gajamithuro' and 'Development of National Parks in North and East'. Occasional progress reports were submitted to various other institutions, according to the necessity and on request.

- **Preparation of the Performance Report**

Performance report for the year 2010 was compiled using data and information on the implementation of Action Plan activities and results of conservation operations of DWC.

- **Preparation of Special Project Proposals**

Project proposals on special conservation and development activities in protected areas prepared by Planning and ICT division were forwarded to the treasury and/or other funding agencies. In 2012 following special project proposals (Table 1.1) were qualified for funding and DWC is to receive funds for these proposals in 2012.

Table 1.1: Special Project Proposals Qualified for Funding

Name of the Proposal	Total Project Cost (Rs. Million)	Funds to be Received in 2012 (Rs. Million)	Funding Source
Gajamithutro Programme	900.00	200.00	Consolidated Fund
Construction of Wild Elephant Conservation Park at Lunugamvehera and Horowpothana	504.99	200.00	Consolidated Fund
Deyata Kirula Development Programme	185.00	126.00	Consolidated Fund

- **Administration of DWC Wide Area Network (DWC WAN)**

Existing computer network was maintained and administered throughout the year by staff of planning division. These activities include repairing of computers and accessories, trouble shooting of the WAN, upgrading the computers with installing new hardware and software.

Automation of ticketing system was completed at Horton Plains and Wilpattu National Parks.

- **Administration of DWC Website: www.dwc.gov.lk**

Existing web site of DWC was continuously updated incorporating data and information, educational and research value. The entire process was performed by the staff of planning division.

- **Radio Communication Network**

Following activities were carried out to improve coverage and ensure uninterrupted connectivity of the radio communication system. Operational component of all these activities were performed by Radio Communication Technicians attached to the planning division.

- **Administration of GIS Unit**

Maps were prepared for the following purposes and themes using the GPS data collected in the field.

- Proposed extensions to the protected area network in Northern and Eastern administrative provinces.
- Areas for grassland management.
- Existing and proposed electric fences.
- Locations and extent of fire belts.
- Human elephant conflict prevailing areas.

In addition maps on specific themes were prepared on the request of different divisions of head office and field offices.

- Program of Action Plan Activities in 2011. Table 1.2 indicates the progress of action plan activities implemented by Planning & ICT division in 2011.

Table 1.2: Progress of Action Plan Activities in 2011.

S.N.	Activity	Details	Expenditure (Rs. '000)
1	Commitments 2010	NWTC, Giritale PABX service agreement was completed and Solar power system was purchased for Horton Plains NP	1,014
2	Automation of National Parks	completed automation of Horton Plains and Wilpattu NPs	294
3	Server for Yala NP Ticketing counter	Procurement completed	91
4	Maintenance of Telephone system along with Intercom system	Annual targets were accomplished	20
5	Purchasing of Battery (Wilpattu-4, Aliyamalagala-2)	04 No. of 12V 90Ah Batteries were purchased	389
6	Purchasing of battery for Ritigala	04 Batteries were purchased	51
7	Maintenance of communication system	12 Nos Motorola GP 328 and GP 308 hand held radio sets and 02 Nos Motorola radio sets were repaired	305
8	Purchasing of Telephone connection for Pigeon Island NP	Completed	5
9	Purchasing of CDMA Telephone connection for Mahawilachchiya - Wilpattu NP	Completed	18
Total			3,700

Chapter 2

NATURAL RESOURCE MANAGEMENT DIVISION

2.1. Main Activities and Responsibilities

- Preparation and revision of Management Plans for protected area.
- Preparation and revision of resource inventories for protected areas.
- Reviewing the PA Network and carrying out PA declarations.
- Survey and demarcation of PA boundaries.
- Review, monitoring and formulation of policy for wildlife habitat management; water resources and grassland management.
- Implementation of Invasive species control activities.
- Management of fire belts.
- Coordination and supervision of pollution control and species recovery plans.
- Conducting EIA for development activities proposed in PAs
- Participating EIA process of development projects of the country.
- Working as administrative authority of Ramsar convention in Sri Lanka.

2.2. Establishment of Protected Area Network

- Survey and boundary demarcation were carried out to strengthen the protected area network. Table 2.1 shows the progress of boundary demarcation activities carried out in 2011
- Sign boards were manufactured and erected along the boundaries of protected areas. Table 2.2 shows the detail of establishment of sign boards in protected areas.

Table 2.1: Boundary Demarcation in 2011

Region	Sanctuary / Park	Total length of Demarcated
North Western	Kalawewa, Balaluwewa Bounday in Kahallapallekele Sanctuary	15Km
	Wilpattu National Park (Northern Boundary)	12 Km 200 m – 130 Posts
Central	VRR Sanctuary	100 Posts
Central	Rawanaella Sanctuary	7 Km - 202 Posts
Yala Bundala	Northern Boundary in Bundala N.P.	24 Km – 155 Posts

Table 2.2: Establishment / Rehabilitation of Sign Boards in 2011

Region	Sanctuary / Park	No. of Boards
Yala Bundala	Yala National Parks	11 Boards
	Buttala (dayata Kirula)	02 Boards
	Bundala National Park	19 Boards
	Bundala National Park (Ramsar Board)	02 Boards
Western	Bellanvila Attidiya Snctuary	6 Boards
	AD Office (western)	01 Boards (Rehabilitated)
	Muthurajawela Sanctuary	16 Boards
	Hikkaduwa National Park	04 Boards
	Sri jayawardanapura Sanctuary	02 Boards
	Maduganga Sanctuary (Ramsar Board)	02 Boards
	Rathgama Bay Sanctaury	08 Boards
Head Office	Jayanthipura Entrance & Parliament Entrance	02 Boards
Central	Thangamaley Sanctuary	18 Boards (Rehabilitated)
	VRR Sanctuary	64 Boards (Rehabilitated)
	Horton Plains	05 Boards
Mahaweli	Minneriya National Park	15 Boards
	Elahara Girithale Nature Reserve	06 Boards
	Trincomalee Range Office	01 Board
	Maduruoya (galkada Entrance)	03 Boards
North Western	Anawilundawa Sanctuary	10 Boards
	Anawilundawa Sanctuary (Ramsar Board)	02 Boards
	Wankaley Sanctuary (Ramsar Board)	02 Boards
	Chundikulum/Madu/Kokilay Sanctuary	15 Boards
	Wilpattu National Park	06 Boards
	Fishing Vilege of Wilpattu N.P.	02 Boards
Eastern	Kumana National Park (Ramsar Board)	02 Boards
	Lahugala National Park	03 Boards
Southern	Mattala Elephant management Zone	16 Boards

2.3. Habitat Enrichment for Wildlife

Removal of the invasive species, management of grasslands and maintenance of the fire belts are the major activities conducted under habitat enrichment. Tables 2.3, 2.4, 2.5 and 2.6 show the details of the habitat enrichment activities carried out in 2011.

Table 2.3: Management of Grasslands in Wildlife Regions in 2011

Wildlife Region	Name/ Location of Grassland	Extent (ha/m ²)	Expenditure (Rs. '000')
North Western	Maintenance of Kalapuandara (Prophis juliflora) removed area – Thabbowa Sanctuary	10 ha	1,133
	Maintenance of grasslands – ETH Ritigala	1 ha	119
Southern	Maintenance of <i>Lantana</i> removed area - Udawalawa NP	510 ha	902
	Maintenance of <i>Lantana</i> removed area – Lunugamwehera NP	21.75 ha	511
	Maintenance of grasslands – ETH Udawalawa	1 ha	29
Central	Management of grasslands – Horton Plains NP	50m X 50m	332
Yala Bundala	Maintenance of grasslands along road sides by removing undergrowth at Yala block-III	15 ha	31
Head Office	Maintenance of head office garden		19
Total			3,920

Table 2.4: Removal of Invasive Species in 2011

Wildlife Region	Invasive Species	Extent (ha/Acr)	Expenditure (Rs. '000')
Western	Removing of Welatha – Jayawardenapura Sanctuary	¾ Acr	175
	Removing invasive spps in Horagolla NP under Wilmuwa Project	¾ Ha	30
Yala Bundala	Removing of invasive spps along road sides at Yala National park	65 Ha	863
Eastern	Removing of invasive spps in Kumana National Park (Underbrush)	10 Km	
Southern	Removing of invasive spps in Lunugamwehera National Park	28.5 Ha	
Total			1,068

Table 2.5: Maintenance of Fire Belts in 2011

Wildlife Region	Protected Area	Extent (ha)	Expenditure (Rs.'000')
Southern	Udawalawa NP		638
Total			638

Table 2.6: Tree Planting Programmes in 2011

Wildlife Region	Protected Area	Extent	Expenditure (Rs.'000')
Western	Tree planting program me in encroachers removed areas (Jayewardenepura area) – Haggala SNR	1600 plants	300
Total			300

2.6 Wildlife Conservation Activities under Moragahakanda Project

Project component on wildlife of Moragahakanda development project is implemented by DWC. Priority concern under these activities is to minimize Human Elephant Conflicts in the area. Table 2.8 gives a full account of wildlife activities under Moragahakanda Project.

Table 2.7: Wildlife Conservation Activities under Moragahakanda Project in 2011

Activities	Expenditure (Rs.'000')
Grassland management in Wasgamuwa, Angammodilla, Kaudulla NPs & VRR Sanctuary	
Removal of invasive spp in Wasgamuwa NP.	
Establishment of Nature Trail in Angammodilla NP.	
Establishment of 6 camp sites in Angammodilla & Minneriya NPs.	
Establishment of electric fences on Wasgamuwa NP, Pubbiliya, Madirigiriya & Mahaweli system 'G'.	
Provided training programmes for wildlife officers.	
Total	17,000.00

Chapter 3

PROTECTION AND LAW ENFORCEMENT DIVISION

3.1. Main Activities and Responsibilities

- Implementation of the Fauna and Flora Protection Ordinance (FFPO)
- Declaration of Protected Areas (PAs)
- Preparation of regulations and amendments for FFPO
- Consultation to field staff on enforcement of FFPO

3.2. Performance in detail

3.2.1. Implementation of Fauna and Flora Protection Ordinance

- **Registration of Domestic Elephants and Tusks**

It's mandatory to,

- register newly born elephants to domesticated elephants
- register tusks in possession of any person
- renew the registration of elephants and tusks annually

In 2011 registration renewal was done for 82 elephants and 2 tusks. The revenue earned from the registration is Rs. 80,550.00

- **Detection of Wildlife Offences**

Six hundred and fifty one (651 Nos) wildlife offences have been detected and culprits were taken to courts during the reporting period. Revenue collected as fines imposed by court is Rs. 25,266,172.00. Regional distribution of cases prosecuted in 2011 is given in Table 3.1. Distribution of number of court cases prosecuted and revenue generated from fines imposed by court during the period of 2007 to 2011 are given in Figures 3.2 and 3.3.

Table 3.1: Number of Cases Prosecuted in 2011

Region	No. of Cases
North - Western	108
Mahaweli	225
Yala Bundala	43
Southern	125
Central	15
Eastern	39
Western	07
Flying Squad (Head Office)	12
Total for 2011	574

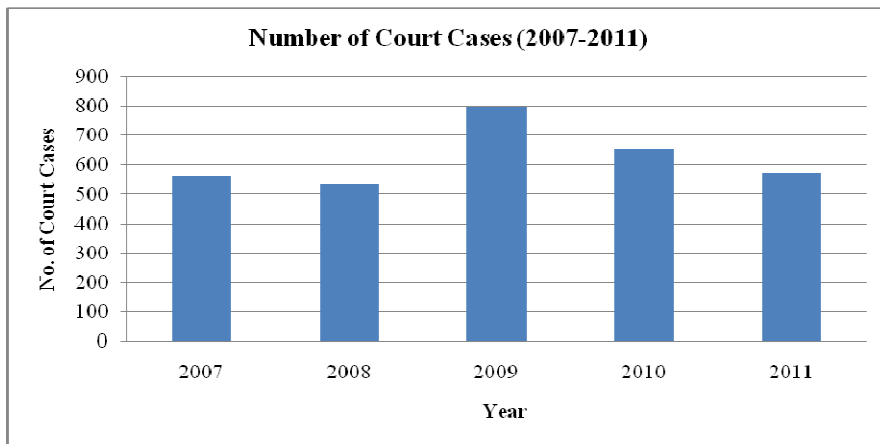


Figure 3.2: Number of Cases Prosecuted (2007- 2011)

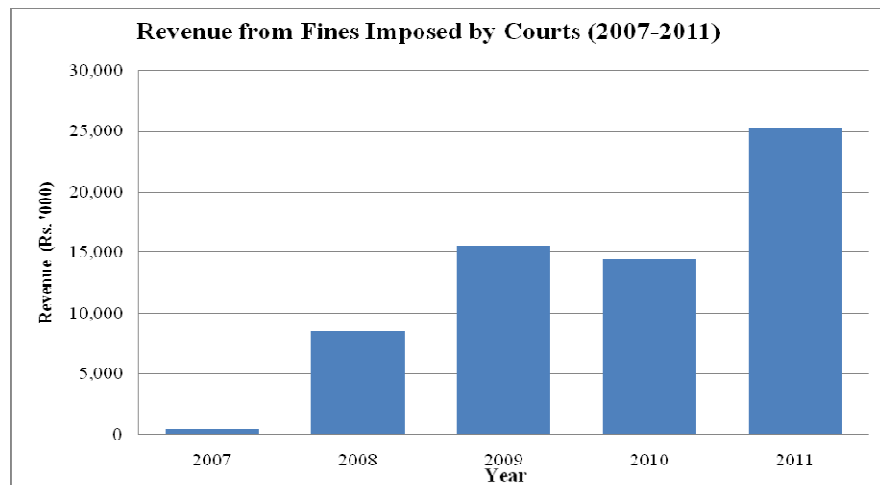


Figure 3.3: Revenue Generated from Fines imposed by courts (2007- 2011)

Funds allocated under the annual action plan for the protection and law enforcement division was utilized to improve supporting infrastructure for law enforcement. The progress of the action plan activities are given in the table 3.2.

Table 3.2: Progress of Action Plan Activities for 2011

S.No.	Activity	Physical Progress	Financial Progress Rs. ('000)
1	Re-establishment/Strengthening of Regional Flying Squads (RFS) – 6	6 Nos RFS were established.	20
2	GPS and Map Usage for Law Enforcement (6 sessions for RFS)	06 Nos workshops were completed at Udawalawa NP and Giritale.	266
3	Capacity Building in court procedures (6)	06 Nos workshops were completed.	163
4	Protected Area Health Management Program	1Nos workshop were completed at Udawalawa NP	75
5	Sri Lanka Wildlife Enforcement Network Activities – Capacity Building	completed	946
6	Fixing Gun Mounting Racks	12 Nos. gun racks were completed	670
7	Memory card and battery pack for Canon EOS 350 Digital Camera	01 Nos chip and 01 Nos battery pack were purchased.	12
9	Purchasing of Repeater Guns	100 guns were purchased	1,234
10	Special Media Coverage	completed	5
11	Turtle conservation programme	01 chip and 01 battery pack were purchased.	5
12	Training for Civil Security Force personnel	completed	22
13	Awareness prog. for Government officers	01 programme completed.	32
14	Purchasing of electronic version of law proceduers	completed	14
15	Wildlife camp site Siyabalagaswadiya camp site	completed	148
16	Payments for Lawyers	completed	54
17	NWTRC Gitetale	completed	830
Total			4,495

Chapter 4

ELEPHANT CONSERVATION DIVISION

4.1. Main Activities and Responsibilities

- Implementation of national elephant conservation policy.
- Maintaining and updating a database on elephant related data and information.
- Establishment of elephant conservation areas including elephant corridors.
- Payments of compensation for damages due to HEC.
- Construction and management of physical barriers against elephant movements in settlements such as power fences, live fences and other innovative solutions.
- Capture and translocation of elephants.
- Organizing elephant drives and monitoring the progress.
- Procurement of goods and equipments related to elephant management.

Performance in detail

4.2. Human Elephant Conflict (HEC)

Elephant population of Sri Lanka is currently facing serious threats to its existence due to continuous shrink of favorable habitats, due to changes in land use patterns and degradations of the quality of existing habitats. As a result a conflict has been arising causing property damages, injuries and deaths of both human and elephants. Data pertaining to the elephant deaths, human deaths, injuries due to elephant attacks and property damages are illustrated in the table 4.1, 4.2, 4.3, and 4.4 and Figures 4.1, 4.2, 4.3 and 4.4.

Table 4.1: Regional Distribution of Elephant Deaths from 2007-2011

Region						
	2007	2008	2009	2010	2011	Total
North Western	73	92	66	66	82	379
Mahaweli	57	65	72	74	90	358
Southern	27	30	30	35	36	158
Eastern	21	23	41	42	33	160
Central	3	4	3	2	3	15
Yala Bundala	8	10	16	8	11	53
Total	189	224	228	227	255	1,123

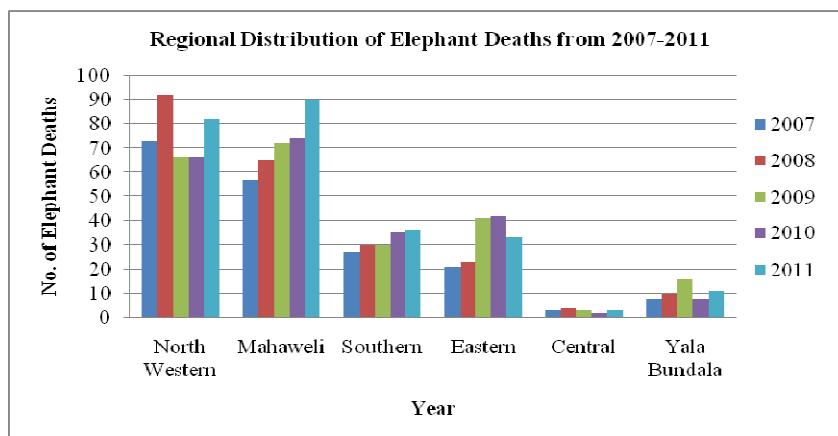


Figure 4.1: Regional Distribution of Elephant Deaths (2007-2011)

Table 4.2: Regional Distribution of Human Deaths

Region	Annual Number of Human Deaths due to Elephant Attacks					
	2007	2008	2009	2010	2011	Total
North Western	32	33	19	34	20	152
Mahaweli	16	16	14	14	22	77
Southern	4	8	3	9	5	34
Eastern	15	9	10	14	6	65
Central	3	3	3	4	6	14
Yala-Bundala	2	2	1	6	1	11
Total	72	71	50	81	60	353

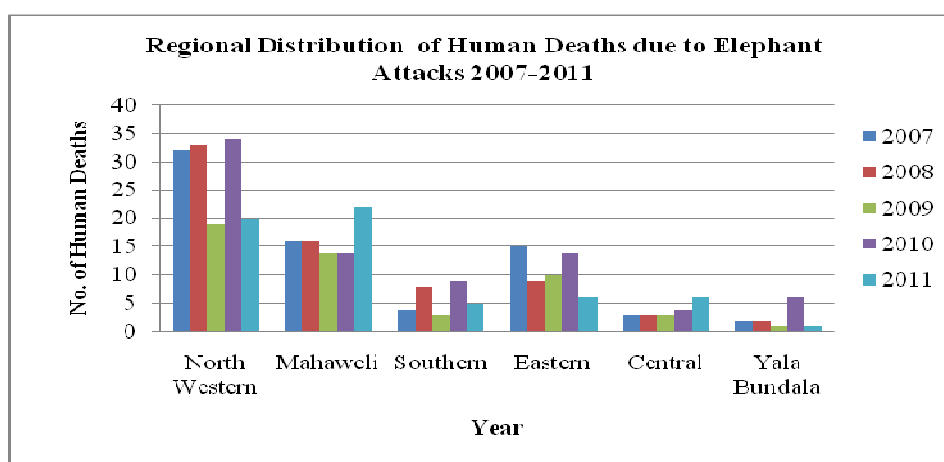


Figure 4.2: Regional Distribution of Human Deaths (2007-2011)

Table 4.3: Regional Distribution of Injuries to Human due to Elephant Attacks (2007-2011)

Region	Annual Number of Injuries					
	2007	2008	2009	2010	2011	Total
North Western	30	38	12	37	25	142
Mahaweli	13	10	22	27	21	93
Southern	17	5	6	9		37
Eastern	10	11	5	8	7	46
Central	0	0	0	4	1	5
Yala-Bundala	0	4	1	0	13	18
Total	70	68	46	85	67	336

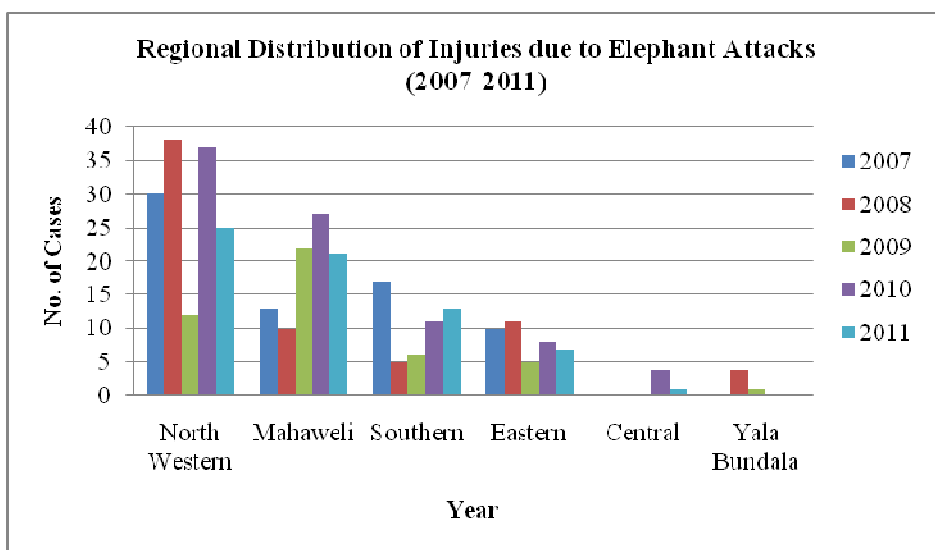


Figure 4.3: Regional Distribution of Injuries to Human due to Elephant Attacks (2007-2011)

Table 4.4: Regional Distribution of Property Damages (2007-2011)

Region	Annual Number of Property Damages					
	2007	2008	2009	2010	2011	Total
North Western	306	233	203	812	247	1801
Mahaweli	429	180	230	670	469	1978
Southern	135	138	131	145	124	673
Eastern	66	53	155	266	304	844
Central	9	35	40	64	81	229
Yala-Bundala	23	45	68	40	0	176
Total	968	684	827	1997	1225	5701

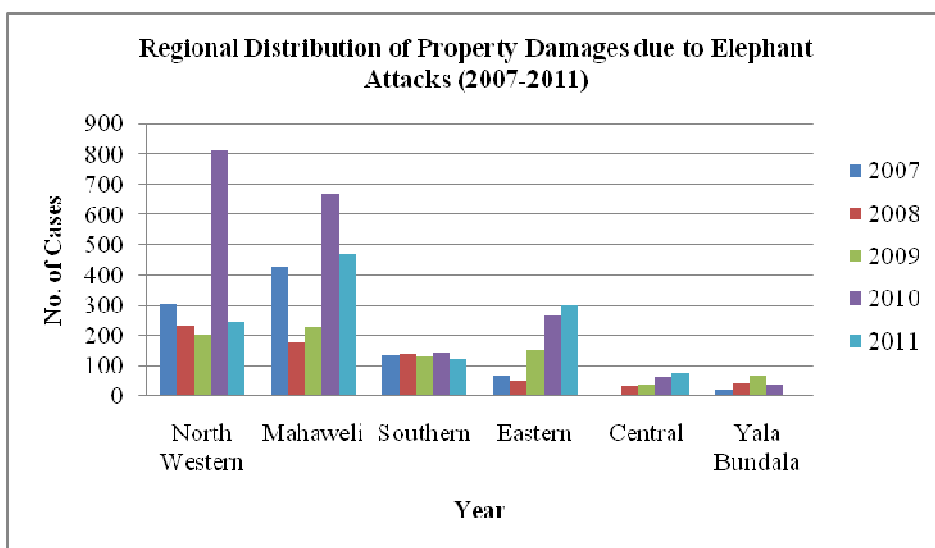


Figure 4.4: Regional Distribution of Property Damages (2007-2011)

4.2.1. Mitigation of Human Elephant Conflicts (HEC)

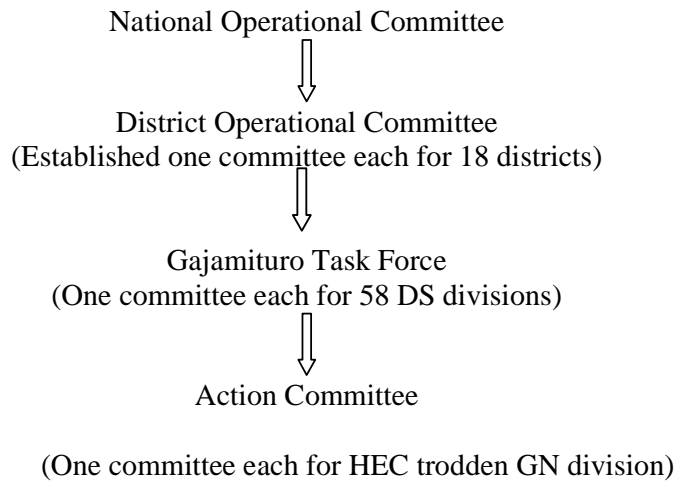
At this alarming level of HEC, DWC is actively engaged in mitigating HEC. DWC implement various strategies under the national policy mitigate HEC. Notably electric fence, elephant drives, distribution of thunder and serpent flare, habitat enrichment, establishment of habitat connectivity are the major concerns of DWC at presence. As a multifaceted approach in mitigating HEC, DWC has been implementing ‘Gaja Mituro’ Programme since 2008.

4.2.2. Gajamituro Programme

Gajamituro programme was formulated to implemented measures to mitigate human elephant conflict in 58 Divisional Secretary divisions in 18 districts. Activities implemented under Gajamituro Programme were construction of electric fences,

establishment of 15 elephant control units, procurement of thunder and serpent flares, payment of compensation for human death, injuries and property damages and procurement of field vehicles.

Gajamituro programme is a type of participatory management and implementation project. It has been formulated to gain the support of national as well as village level of offences and individuals. Following is the simplified organization of Gajamituro Action committees. For the year 2011, Rs. 200 million was allocated for this project.



4.2.3. Electric Fencing Programme

The electric fence is being used as a psychological barrier against the wild elephants since 1966 in Sri Lanka. Today it has become a leading management tool in mitigating elephant depredations in agricultural and plantation areas.

In the year of 2011 under Gaja Mithuro programme accessories were purchased for new electric fences and construction will be completed by the end of 2012. Necessary reconstruction and repairs were also done to the existing fences (Table 4.5).

Table 4.5: New Electric Fences (EF) Erected in 2011

AD Region	Name of Electric Fence	Length of EF(Km)
North Western	Silawathura	5
	Palagala	12
	Hunuwilagama Bolgoda	95
Mahaweli	Orubedisiyabalawa	4
	Muthunagar	7
	Ihakuluwewa Katukeliyawa	16
	Onegama Sungawila	15
	Damminna Kandegama	13
	Diyakepilla	8
	Hungamalaoya	2
Southern	Thanamalwila Udawalawa	11
	Ice Pilla	10
Central	Welare Palugolla	15
Total Length of Electric Fence in 2011		213

4.2.4. Distribution of Thunder Flares and Serpent Flares in 2011

Two types of specially designed crackers viz; Thunder flare and Serpent flare are annually purchased in bulk and distributed among wildlife offices. Villager in HEC trodden areas barrow the cracks from wildlife officer. Table 4.6 shows annual purchase and table 4. 7 illustrate annual distribution of these cracks.

Table 4.6: Procurement of Thunder Flares and Serpent Flares in 2011

Type	No. of Purchased	Expenditure (Rs.)
Thunder Flame (Large)	239,000	18,737,600.00
Thunder Flame (Small)	125,000	7,781,250.00
Serpent Flames	150,000	14,146,036.00
Total	514,000	41,146,036.00

Table 4.7: Distribution of the Thunder Flares and Serpent Flares in 2011

Wildlife Region	Thunder flare		Serpent Flare
	Small	Big	
North-Western	38,500	103,950	64,130
Southern	26,500	40,300	27,400
Mahaweli	34,250	60,800	38,700
Eastern	21,350	40,000	27,800
Central	8,800	18,700	9,400
Yala-Bundala	4,300	8,000	3,500
Total	133,700	271,750	170,930

4.2.5. Compensation Scheme

A compensation scheme approved by the cabinet is being implemented to reimburse the economic damages caused by elephants to the public. Compensation paid in 2011 is given in detail in the Table 4.8.

Table 4.8: Compensation Paid in 2011

Wildlife Region	No. of Cases	Total Amount Paid (Rs. Millions)
Mahaweli	505	9.91
Central	86	1.43
North Western	294	6.63
Southern	142	3.22
Yala/Bundala	0	0
Eastern	321	3.99
Total	1348	25.18

4.2.7. Capture and Translocation of Elephants in 2011

Two marauding elephants were captured and released to Kumana and Maduru Oya National Parks. These activities were funded by wildlife conservation fund.

Table 4.9: Capture and Translocation of Elephants (2007-2011)

	Number of Elephant Captured				Expenditure (Rs. Million.)
	North Western	Southern	Mahaweli	Central	
2006	0	0	0	0	0.00
2007	8	5	0	0	2.75
2008	10	1	0	0	1.73
2009	7	6	3	2	3.12
2010	12	6	3	2	7.60
2011	1	1	-	-	0.36

Table 4.10 illustrates the activities implemented under Gajamithuro Programme.

Table 4.10: Gajamithuro Project – Progress in 2011
Project budget - Rs. 900 million for 3 year
- Rs. 300 million for 2011

Component	Budget 2010 Rs. (Million)	Remark
1. Construction of new electric fences	55.90	Equipment delivery completed for fence erection in 2011
2. Construction of office building and quarters for elephant control unit Baduluwela	2.46	Completed
3. Construction of office for Batticoloa ECU	2.47	50% Completed
4. Purchase of communication equipments.	1.47	Purchased 9 base stations
5. Habitat enrichments within wildlife protected areas	4.00	70% completed of live fence of the Minneriya NP, 70% completed rehabilitation of Pasi lake and 70% completed rehabilitation of Kongaha lake
6. Purchasing of thunder flares and Serpent flare	34.93	433,891 of thunder crackers were purchased.
7. Compensation for elephant damages	25.18	Paid compensation for 1384 of incidence including 56 of Human deaths, injury damages and Property damages
8. Development of Angamaddilla elephant training and domestication center.	4.00	75% completed
11. Operation of elephant control units	3.56	completed
12. Project operation Expenditure.	13.55	Allocation released to field (75%)
9. Supply 9 energizers to Polpithigama AGA Division	3.20	
14. Construction of EF-Malwathu Oya to Hunuwilgama -95Km	40.00	7 Km was completed
10. Construction of live fence in Minneriya NP	0.44	completed

11. Elephant survey 2011	0.19	04 Awareness prog. Was completed.
12. Purchased statue for international elephant conservation meeting in New Delhi.	0.65	10 Statues were distributed among Foreign ministers
13. Research and Training on Human Elephant Conflict mitigation	0.49	4 prog. Completed.
14. Rehabilitation of Koongas wewa in Tabbowa Sanctuary	3.19	completed
15. Rehabilitation of Passy wewa in Tabbowa Sanctuary	3.13	completed
16. Construction of Causeways in Lunugamwehera EHG	2.62	completed
17. Rehabilitation of road at Ritigala transit home	2.79	5 Km completed
18. Maintenance & Improvements of Elephant Holding Ground, elephant domestication and training center .	4.50	Rehabilitated road in LNP-EHG
19. Maintenances of existing electric fences.	17.29	GA's in Hambantota, Ratnapura, Anuradepura, Polonnaruwa, Nuwaraeliya, Trincomalee , Puttalama, Kurunagala, Monaragala were completed some mantance of EF
Total	228.27	

4.2.6. Elephant Drives in 2011

Elephant drives are carried out to chase the elephants away from the conflict areas and to content them in protected areas. In 2011 DWC carried out 5 organized elephant drives. Table 4.11 display the year wise information of elephant drives.

Table 4.11: Elephant Drives in 2011

AD Regions	Number of Elephant Drives
North Western	3
Southern	-
Mahaweli	2
Yala-Bundala	-
Eastern	-

Chapter 5

RESEARCH & TRAINING DIVISION

5.1. Main Activities and Responsibilities

- Preparation of research and training plans and associated budgets for the DWC.
- Form and maintain the research committee.
- Administration and development of DWC library.
- Organizing and conducting training programmes.
- Supervision of NWTRC.

5.2. Research

DWC funds its staff for carrying out short-term research projects oriented to wildlife management. Findings of these researches proved worth applying for protected area management.

In addition DWC grant permits to conduct research projects in its protected area network and outside the protected area network. Outside research institutions and individuals get use of this opportunity. It's mandatory to get the DWC research committee approval for such a research.

Table 5.1 provide the list of short-term research projects carried out by DWC staff and Table 5.2 the collaborative research projects conducted in the wildlife protected areas during the year 2011.

Table 5.1: Research Studies Undertaken by DWC Staff in 2011

Serial Number	Research Topic
1	Preparation of bibliography of publications on Wildlife Conservation & Management related documentaries in Sri Lanka.
2	Habitat mapping study specially focused on birds, mammals & invasive plant species in Anawilundawa Ramsar wetland sanctuary, Sri Lanka.
3	Assessment of the landscape characteristics of wild elephants ranging in Mahaweli wildlife region.
4	Study on status of point endemic plantsSpecies in Ritigala SNR.
5	Study of the effectiveness of locally made energizers in mitigating HEC by deterring wild elephants especially with village level small scale electric fences-2011.

Serial Number	Research Topic
6	Identification of dragonflies in Minneriya National Park.
7	Identification of caves of crocodile nesting sites.
8	Identification of snake species in Udawalawa National Park.
9	Identification of marine species in western boundary of Wilpattu National Park.
10	Designing of an economical energizer for electric fences.
11	Identification of suitable habitats for wild elephants in Anuradhapura district by preparation of maps.
12	Identification of possibility of Tuberculosis infection to both wildlife officers and wild elephants.

Table 5.2: Collaborative Research Projects for 2012

Serial Number	Research Topic	Collaborative Institute
01	National Bird Ringing Program - Bundala National Park	Field Ornithology Group of Sri Lanka
02	Identification of Elephant Movement Patterns	CCR
03	Turtle Tracking Project	DWC-Wildlife Institute of India
04	Elephant Project	Rajarata University of Sri Lanka

5.3. Training

Training programs conducted for DWC officers are divided into two distinct categories. They are,

1. Short term special training programs.
2. Regular training programs.

In addition based on the availability, foreign trainings are also offered for the DWC staff.

1. Short-term Special Training Programmes

These training programmes are specially arranged to improve the knowledge and skills of DWC officers on a wide range of subjects. Each and every category of these courses is conducted in collaboration with different training institutes or organizations. Details of such courses conducted in the year 2011 are given in the Table 5.3.

R – Range Officer
RA – Range Assistant
WG – Wildlife Guard
DD – Deputy Director
MFA – Management and Finance Assistant
MA – Management Assistant

Table 5.3: Special short term Training programmes conducted for Wildlife Officers in 2011

S.No.	Topic of the Training Programs	Details	Expenditure (Rs.'000')
1	Identification of herpetofauna	R, RA, WG	125
2	Handling of fire arms and field operations	R, RA, WG	405
3	Advance training on GIS	R, RA, WG	30
4	Certificate course on wildlife management	MFA,	61
5	Zoonotic diseases	R, RA, WG	102
6	Information and communication training		35
7	Wildlife health and management (@ ETH)	R, RA, WG	18
8	MBA	DD	102
9	Media Workshop	Correspondents	739
10	Managements of zoo specimens	R, RA, WG	free
11	Training for Volunteer guides	Volunteer guides	Funded by Dilmah
12	Training Program on Tamil language	MFA, MA	Funded by STLD
Total	1,617		

2. Regular Training Programmes

The regular training courses are available only for the DWC officers and training programmes conducted at National Wildlife Training and Research Centre (NWTRC) in 2011 are given in the Table 5.4.

5.4. National Wildlife Training and Research Center (NWTRC)

NWTRC established in 1992 at Giritale to fulfill the objective of train and develop the capacity of DWC staff, by providing high quality, professional training opportunities.

Table 5.4: Regular Training Programmes Conducted at NWTRC in 2011

	Topic of the Training program	Details	Expenditure(Rs.'000')
1	Junior Certificate course in wildlife Management	XVII, XVIII, (Two Batches) of Wildlife Guards	638
2	Diploma course in wildlife management	one batch	2,059
Total			2,697

- NWTRC continued Biodiversity Baseline Survey in 2011 in Udawalawa National Park, Bundala National Park, Wasgamuwa National Park, Minneriya National Park, Horton Plains National Park, and Ritigala Strict Natural Reserve and Peak Wilderness Nature Reserve.

Table 5.5 Financial Progress of NWTRC

Activity	Expenditure (Rs. '000')
Regular Training Programs	2,697
Short Term Programs	5,393
Total	8,090

- **International Training**

Following are the details of foreign trainings made available for DWC staff.

Table 5.6: Foreign Training Programs Participated by Wildlife Officers in 2011

Training course	No & Designations of participants	Country	Duration
Study Tour on Wildlife management	D(Operations) ,DD (R&T), Ranger I, Ranger III (25 officers)	India	14 Days

5.5. Extension, Education and Interpretation

Conservation is abortive if tried in isolation. It needs peoples' support and appreciation. Therefore, it is necessary to have a well-informed public to encourage each and every conservation initiative that has to be implemented for the promotion of conservation.

Table 5.8 indicates the details of the Extension, Education and Interpretation conducted to the target groups such as school children, villagers and the public servants.

Table 5.7: Seminars, Exhibitions and Awareness Programmes Conducted in 2011

Activity	Physical Progress	Financial Progress (Rs. '000')
Seminar on wildlife conservation for school children - 10 programmers each in 07 wildlife AD regions (70 Prog.)	Progs. held AD(western)-10, AD(Eastern) -10, AD(Central)-10, AD(Mahaweli)-10 AD(South)-10, AD(Yala/Bundala)-10, AD(North-Western)-10	666
Awareness Programmers for Government Officers All Region (14 Prog.)	Progs. held AD(western)-02 AD(Eastern) -02, AD(Central)-02, AD(Mahaweli)-02, AD(South)-02, AD(Yala/Bundala)-02, AD(North-Western)-02	378
Awareness programmers to mark World Wetland Day - Bundala and Muthurajawela(02 Prog.)	05 prog. were held at Anawilundawa, Horagolla NP, Muthurajawela, Madugaga and Hortanthanna NP	349
Awareness programmers on request & Special Seminars	Awareness programs for villagers and Army officers Civil Security Forces AD(western)-08, AD(Eastern) -06, AD(Central)-02, AD(South)-05 AD(Yala/Bundala)-02, AD(North western)-02	561
Exhibition (All regions)	Exhibition were held at AD(western)-05, AD(Central) -01, AD(Giritale)-01 media persons, AD(Mahaweli)-01 prog., AD(North-Western)-01	489
Documentaries of Wananthare Kathandere at SLBC	Continually telecasting	164
Documentary for Rupawahini	Telecasted Galoya NP	36
World Environment day	Prepared 02 banners and 01 Awareness program me for gov. officers(AD Mahaweli) was completed	114
World Biodiversity day	Completed 02 Awareness programs in AD(Western)-Gampha & Horagolla	112
World Wetland day	01 program completed in Anawilundawa	517
Poson festival	Printed leaflets, 2 banners and Photos, 01 Exhibition (AD-North-Western) -Anuradepura and AD(Mahaweli)-Polonnaruwa	128
63th independent day	Completed 01 prog. in AD(Mahawali)	30
Esala festival in Southern region	01 program completed in Kataragama, Awareness completed for pilgrims in Pada Yathra	192
Preparation of lobby in Head ffice	Completed	464
<i>Total</i>		<i>5,457</i>

5.6. Publications of the Department

Following publications (Table 5.8) were completed in 2011, posters were made available at the park offices for sale, and other publications were distributed among relevant offices and officers.

Table 5.8: Publications in 2011.

Type of Publication	No. of Copies (Nos)	Expenditure (Rs. '000')
Annual wildlife magazine	2,500	17
DWC Diary	1,500	442
LeafLRTS Galoya.Willpattu, Turtle	15,000	140
Wananthere Kathandaraya (Radio Programme)	21	279
Video Documentary Programmes	3	63
Total Expenditure		941

5.7 Other Activities

- **International Conventions**

DWC has been vested with the authority to implement the following international conventions, of which Sri Lanka is signatory.

1. **CITES (the Convention on International Trade in Endangered Species of Wild Fauna and Flora)** is an international agreement between governments. Its aim is to ensure that international trade in specimens of wild animals and plants does not threaten their survivals.

Table 5.9: Number of CITES Permits Issued (2007-2011)

Year	Number of (Nos) Permits Issued	Income (Rs. '000')
2007	768	384.0
2008	781	390.5
2009	764	382.0
2010	685	342.5
2011	596	522.0

2. **The Convention on the Conservation of Migratory Species of Wild Animals (also known as CMS or Bonn Convention)** aims to conserve terrestrial, marine and avian migratory species throughout their range.

- 3. The Convention on Wetlands (Ramsar, Iran, 1971)** Also referred as the "Ramsar Convention" is an inter governmental treaty that embodies the commitments of its member countries to maintain the ecological character of their Wetlands of International Importance and to plan for the "wise use", or sustainable use, of all of the wetlands in their territories.

Therefore understanding the importance of active participation on the implementation of international conventions in Sri Lanka, DWC has taken steps to send its representatives to participate at the relevant meetings, symposia and workshops.

DWC officers were participated for the following international meetings & workshops

Table 5.10: International Meetings & Workshops Represented by DWC in 2011

S.No.	Activity	Location	Date
1	10 th meeting of the conference of the parties to CMS (COP)	Norway	11-Nov-2011
2	RAMSAR Pre cop 11 Regional Meeting	Indonesia	12-Nov-11
3	International Elephant and Rhino Conservation and Research Symposium	Netherland	10-Oct-11
4	IUCN Asia Regional Conservation Forum	South Korea	27-Sep-11
5	Workshop on Regional Epidemiology and laboratory networking in the SAARC Region	Nepal	27-Jul-11
6	First South Asia Sub-Regional Workshop of UNEP/CMS Dugong MOU	India	6-Jun-11
7	Elephant 8 preparatory meeting	India	24-May-11
8	CITES Asian snake trade workshop	China	11-Apr-11
9	OIE Global Conference on Wildlife Animal Health & Biodiversity Preparing for Fututer	France	23-Feb-11
10	Second meeting of expert group meeting on wildlife enforcement	Bhutan	29-Jan-11
11	BOBLME workshop on the status of marine managed areas in the Bay of Bengal	Malaysia	18-Jan-11
12	Non Detriment findings and review of significant trade for plant species (workshop)	Nepal	9-Jan-11

Chapter 6

VISITOR SERVICES, ECOTOURISM & COMMUNITY OUTRICH DIVISION

6.1. Main Activities and Responsibilities

- Preparation of visitor services plans and budgets.
- Preparation of visitor centre exhibits and display materials.
- Introduction of new tourist packages.
- Diversification of tourist activities.
- Promotion and marketing of VSE activities.
- Establishment of information centers both in and outside PAs.
- To obtain proactive involvement of communities in the conservation process, through community empowerment in order to reduce dependency on Protected Areas.
- To create awareness of conservation among the general public by conducting educational & extension programs.

6.1.1. Performance in detail

6.1.1.1. Visitors and Revenue

- DWC earns the large part of its revenue from visitor services offered at wildlife national parks. In 2011 total revenue from visitor services is Rs. 528,725,097.17 (Table 6.1).
- Visitation to the national parks by both locals and foreigners shows peaks in between July to September (Figure 6.2). This pattern coincides with the major vacations and holidays. According to the statistics after June visitations has increased compared to beginning of the year due to peaceful condition in the country. Details pertaining to visitor numbers show that though local adults are the most visited foreign adults contributed more to the income as the rate for them are high (Figure 6.1 and Table 6.2).
- In addition, the revenue data shows that national parks viz. Yala, Horton Plains, Udawalawe and Minneriya contribute 90% of the total revenue from visitor services. (Table. 6.1).

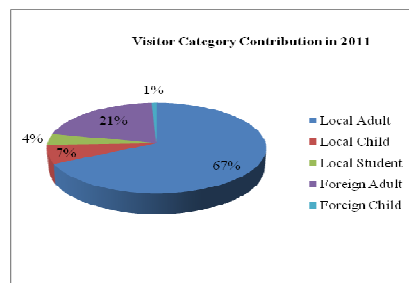


Figure 6.1: Visitor Category Contribution in 2011

Table 6.1: Annual Income from Visitor Services
(2007-2011)

National Park	Annual Income (Rs)				
	2007	2008	2009	2010	2011
Ruhunu(Yala)	56,950,117.90	41,028,880.25	80,416,321.39	206,904,023.74	273,733,990.65
Horton Plains	33,246,464.13	39,530,794.43	43,709,826.92	69,882,153.69	91,284,910.09
Udawalawa	37,489,537.71	31,930,947.17	39,062,100.08	51,756,727.47	59,290,211.91
Wasgamuwa	5,229,545.50	3,063,414.32	5,021,041.15	5,207,906.36	5,219,978.26
Minneriya	14,293,984.05	22,846,218.00	28,870,708.00	33,850,184.33	55,895,756.20
Bundala	6,162,144.70	5,052,179.70	4,179,843.47	6,985,298.90	8,656,613.91
Horagolla	58,686.93	68,954.69	84,943.20	127,242.27	222,186.09
Kaudulla	7,196,623.50	4,676,223.26	9,493,776.80	22,560,356.29	13,724,936.10
Lunugamverera	183,575.10	21,804.00	559,593.72	1,021,259.71	1,227,670.10
Gal Oya	97,298.25	196,249.25	303,395.80	423,476.69	913,920.15
Kumana	0	0	0	3,025,595.33	3,351,307.59
Angammedilla	179,881.15	171,108.50	317,419.10	281,366.42	180,275.45
Galwaysland	59,495.80	88,792.45	148,840.20	214,924.20	99,530.60
Wilpattu	790	0	0	4,603,895.06	14,905,324.49
Maduruoya	21,445.90	12,369.80	9,933.95	9,717.54	18,485.58
Total (Rs.)	161,169,590.62	148,687,935.82	212,177,743.78	406,854,128.00	528,725,097.17

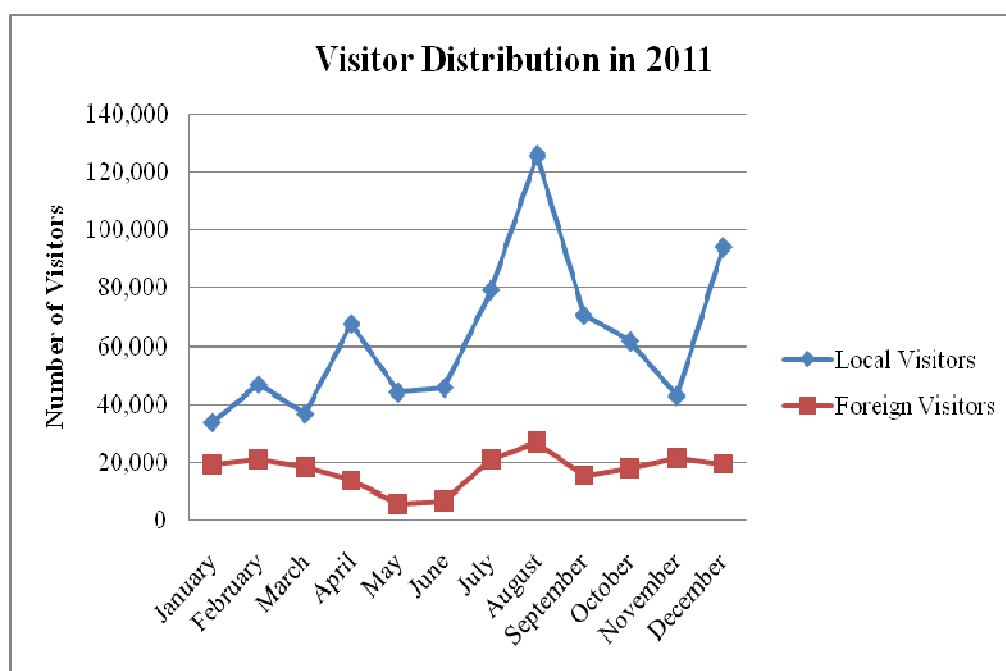
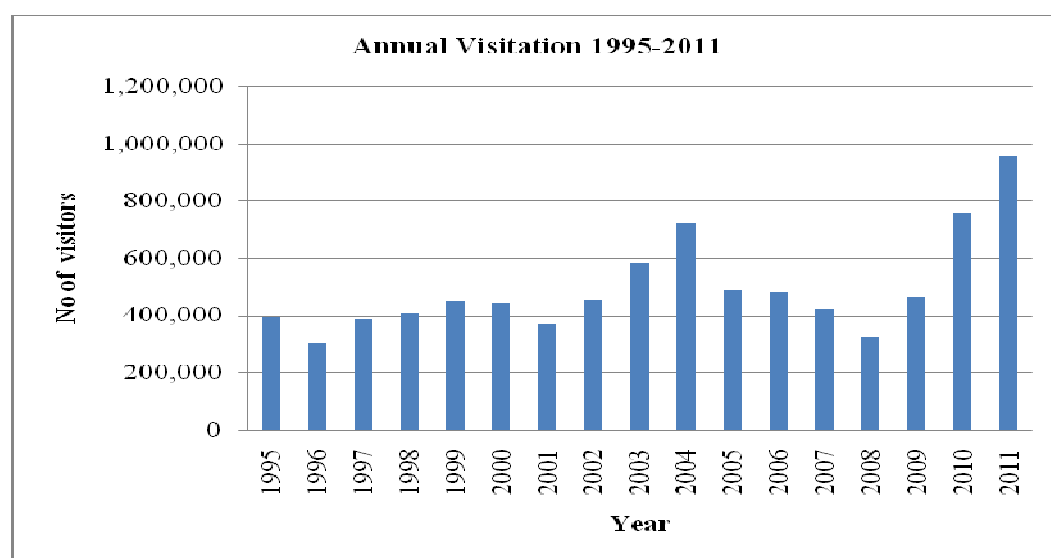


Figure 6.2: Visitor Distribution in 2011

Table 6.2: Visitor Summery in 2011

National Parks	Local Visitors			Total of local visitors	Foreign Visitors		Total of foreign visitors	Grand Total
	Adult	Child	Student		Adult	Child		
Yala	198,514	18,152	0	216,666	95,205	3,378	98,583	315,249
Horton Plains	137,124	15,023	14,671	166,818	29,005	849	29,854	196,672
Udawalawa	52,070	3,770	1,184	57,024	19,093	808	19,901	76,925
Wasgamuwa	16,701	890	1,141	18,732	360	7	367	19,099
Minneriya	34,243	2,133	73	36,449	22,080	1,140	23,220	59,669
Bundala	6,103	352	161	6,616	4,663	117	4,780	11,396
Horagolla	4,708	10	177	4,895	4	0	4	4,899
Kaudulla	7,249	125	0	7,374	8,126	205	8,331	15,705
Lunugamwehera	2,568	135	0	2,703	26	1	27	2,730
Galoya	1,519	61	0	1,580	114	4	118	1,698
Kumana	14,157	1,252	868	16,277	787	33	820	17,097
Angammadilla	1,233	37	213	1,483	0	0	0	1,483
Galwas Land	1,106	62	14	1,182	36	3	39	1,221
Wilpattu	20,641	1,966	365	22,972	2,216	106	2,322	25,294
Maduruoya	94	15	0	109	2	0	2	111
Lahugala	148	7	17	172	25	0	25	197
Pigeon Island	28,506	2,508	21	31,035	3,917	268	4,185	35,220
Hikkaduwa	40,497	5,514	0	46,011	5,403	555	5,958	51,969
ETH	78,770	13,021	18,767	110,558	7,644	334	7,978	118,536
Total	645,951	65,033	37,672	748,656	198,706	7,808	206,514	955,170

**Figure 6.3:** Annual Visitation to National Parks (1995-2011)

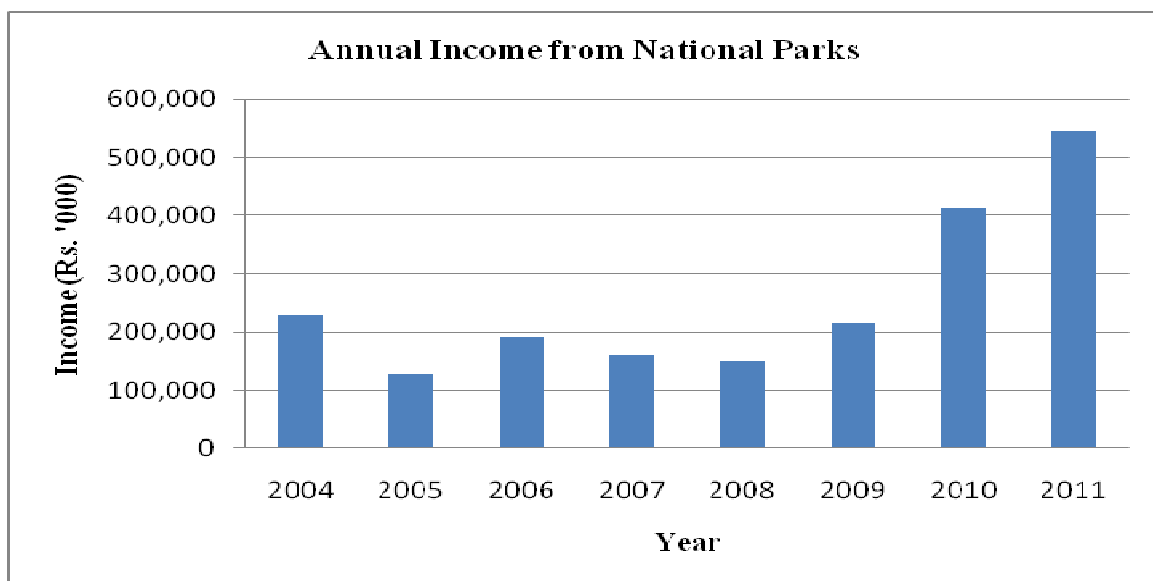


Figure 6.4: Annual Income from Visitor Services (2004-2011)

6.1.1.2. Improvement of Visitor Facilities

To improve the quality of visitor services provided at the national parks following facilities were identified as necessities and improved during last five years.

Table 6.3: Improvement of Visitor Facilities

Facility	Annually Added Number				
	2007	2008	2009	2010	2011
Park Bungalows	-	2	2	-	9
Camping Sites	-	4	2	6	0
Visitor Center	4	2	2	-	-
Park entrance	3	3	2	-	6
Boat Safaris	-	-	2	-	-
Nature Trail	-	2	-	-	-
Turtle beaches	-	1	-	-	-
Vehicle parks	2	3	2	-	-
Viewing Decks	2	1	-	-	-
Computerized ticketing system	-	2	3	3	2

6.1.1.3. Volunteer Guides

DWC mobilize the educated youths residing in the fringing villagers of wildlife protected areas as volunteer guides in national parks. These volunteer guides are deployed in interpretation activities at the national parks. Following table shows the number of volunteer guides mobilized for visitor services from 2007 to 2011.

Table 6.4: Number of volunteer Guides 2007-2011

Year	Number of Volunteer Guides
2007	197
2008	189
2009	266
2010	255
2011	287

Table 6.5: Development Activities Carried Out to Improve Visitor Facilities in National Parks.

Activities	Physical Progress	Financial Progress
Solar powered water pump for Ruhunu NP	Completed	700
Printing of tickets for ETH	Printed ticket books for Local(Adult)- 2000 , Local(child)- 550 and foreign (Adult)-100	300
Entrance Structure for Wilpattu National Park	100% Completed	3,700
Viewing Deck at Wilpattu National Park	Canceled, as the funds for the new location is not enough	1,575
Sign Boards for Wilpattu National Park	Tendering again	125
Construction of Camp Sites at Lahugala and Maduruoya National Park - 2Nos.	Estimating	600

Rehabilitation of Seenuggala, Thimbiriyamankada, Gonaviddagala, Veheragolla and Pokunuthenna circuit bungalows at Udawalawe National Park	100% completed	2,000
Renovation of Endaruwetamulla circuit Bungalow at Maduruoya NP	100% completed	1,000
Construction of entrance structure for Galge entrance of Ruhuna NP	Completed and 2 sign board were repaired (100% completed)	300
Upgrading of visitor centers at Bundala, Minneriya, Udawalawe, Horton Plains, Kaudulla and Wasgomuwa N.Ps	Estimation completed	700
Sign board for Pigion Island NP	02 sign boards were completed	5

Pgion Island Opening- (Printing Leaflets to awareness of visitors)	Printed 200 leaflets, Construction of Plaque	154
Display a sign board within the Katunayaka-Seeduwa Municipal Council area for World Cricket Tropic in 2011	1 sign board completed	47
Opening of Hikkaduwa NP	Invitation, 01 plaque, Concreat blocks, road blaock, Printing of 01 Name board, 01 Observation deck, reparing of Ticket counter and Visitor center, Sanding near office building, Numbering of Glass bottom boats, Opening ceromony and concreat pads	630
Rehabilitation of Lunugamwehera Wildlife Bungalows(Weheragala, Thalgahadigana)	100% completed	376
Rehabilitation of ticketing counter in Pattipola, HNP	100% completed	190
Rehabilitation of hot water system in Wana Niwahana, HNP	70% completed	48
Rehabilitation of Canteen in old building, HNP	100% completed	148
Reparing of Cafe in HPNP	100% completed	266
Preparation of ticketing counter at visitor center in Kumana NP	100% completed	392
Preparation of Concrete benches at Kumana NP	100% completed	38
Additional payments for water pumps in Galkade entrance in Maduruoya NP	100% completed	16
Gakada Opening	100% completed	638
Rehabilitation of Meniksorowwa wildlife bungalow in Kaudulla NP	100% completed	484
Purchasing of a Water pumps for Yala NP	100% completed	762
Printing of tickets	100% completed	342
Wanasiri Asiriya Programme	100% completed	180
Total		10,804

6.2. Community Outreach Unit

6.2.2 Performance in Detail

Activities in relation to the mandate of the division were carried out during the year to obtain proactive involvement of communities in the conservation process, through community empowerment. Table 6.6 illustrates the data and information in relation to those programmes.

Table 6.6: Progress of Community Outreach Activities in 2011

Activities	Physical Progress	Financial Progress
Planting Fruit trees at Meewathpura & Yakkure - Wasgamuwa NP	100% completed	200
Continuation of live fence -southern boundary- Wasgomuwa NP	1km length was completed	110
Maintenance of Live fence - southern boundary- Wasgomuwa	03km of length was completed	190
Micro plan preparation and implement activity at boundary village of Padaviya sanctuary	100% Completed	521
Handy craft programme at Kaudulla NP	100% completed	100
Continuation of CBO activities -shramadana campaign - Bundala NP	100% completed	50
CBO Awareness in Panama- Kumana	100% completed	27
Replantation of Mangroves in Panama- Kumana	100% completed	60
Rplantation of Mangroves in Panama Phase 2	100% completed	190
Rplantation of Mangroves in Kumana Willuwa	100% completed	150
Extension of live fence in Peak Wilderness	100% completed	97
Public & special events	01 Samadana and 01 exhibition was completed(SAVIYA KANTHA)	140
Total		2,000

All these programmes were planned to ensure proper awareness on PAs and the resources in them, empower the community in economic activities and to ensure reduced dependency on PA resources.

- HSBC bank funded clean-up projects conducted successfully in Horton plain, Kaudulla, Minneriya, Wasgamuwa, Udawalawa, Bundala national parks and Peak Wildness Sanctuary. Table 6.7 illustrates the 2011 clean-up programme details.

Table 6.7: HSBC Clean-up Project 2011

Protected Area	Activity	Expenditure (Rs.'000')
Peak Wildness Sanctuary	Clean-up during Sri Pada pilgrimage season	632
Horton Plains National Park	Clean-up and Nature interpretation	1673
Kaudulla National Park	Clean-up	408
Minneriya National Park	Clean-up	377
Wasgamuwa National Park	Clean-up	562
Udawalawa National Park	Clean-up	403
Bundala National Park	Clean-up	371
Total		4,426

Chapter 7

WILDLIFE HEALTH MANAGEMENT DIVISION

7.1. Main Activities and Responsibilities

- Health monitoring and disease investigation activities of wild animals.
- Providing effective and rapid response Veterinary care for wild animals.
- Conducting post mortems of wild animals.
- Monitoring and enhancing the welfare of wild animals.
- Management of wild animal-human conflicts.
- Management of animal rehabilitation centers.
- Management of Elephant Transit Home (ETH).

7.2. Performance in 2011

- **Treatments to wild animals**

Veterinary surgeries attached to DWC were engaged in treating injured wild animals. Treatments to injured wild elephants are a priority at the present context of wildlife conservation and Table 7.1 illustrates the statistics of treatments carried out in 2011.

Table 7.1: Animal Treatments in 2011

Regions	Number of Elephants	Number of Other Animals
Eastern	14	06
Mahaweli/Central	64	20
Southern	-	-
North Western	-	-
Total	78	26

- **Post-mortem Examinations & Treatments**

Veterinary surgeries attached to DWC were engaged in carrying out post mortem examinations of wild elephants & other animals (Table 7.2). These post mortem examinations are very important in detecting disease out breaks and health conditions.

Table 7.2: Post-mortem Examinations in 2011

Regions	No. of Post-mortem Examinations
Eastern	46
Mahaweli/Central	54
Southern	02
North Western	-
Total	102

- **Management of Wild Elephants**

Wildlife health Management division is the focal point of execution of the capture, translocation and collaring of the marauding wild elephants. These activities are highly important for Human Elephant Conflict management.

- 8 Rehabilitated elephants from Elephant Transits Home at Udawalawa were released to Udawalawa National Park and Maduruoya National Park.
- Contribution of the division in implementing Annual action plan is shown in the Table 7.3.

Table 7.3: Progress of Action Plan Activities in 2011

Wildlife Region	Details	Expenditure (Rs. '000')
All Wildlife Regions	Miscellaneous	2,986
Southern	Releasing of baby elephants from ETH	120
	Expansion of ETH according to the proposal	37
	Developments of Cages for other wild animals at ETH	20
North Western	Developments of ETH @ Yan Oya	28
	Deer conservation at trincomalee and routine treatment activities	49
Eastern	Turtle conservation activity at Kumana	176
Total		3,416

Chapter 8

ENGINEERING DIVISION

8.1. Main Activities and Responsibilities

- Implementation of construction and infrastructure development plans within PA's
- Construction and maintenance of buildings outside PA's
- Construction and maintenance of PA's road network.

8.2 Construction and Repairing of Field Buildings

- **Repairing of Buildings**

Repairing of field buildings were carried out as illustrated given in the Table 8.1.

Table 8.1: Repairing of Field Buildings in 2011

Repair/ Rehabilitation/ Renovation Activity	Physical Progress	Financial Progress
Ranger quarters - Keerthibandarapura.	100% Completed	858
Repairing of Thibiriyamankada circuit bungalow	100% Completed	1,064
Repairing of Karawile beet office	100% Completed	644
Water supply for DD office - Lunugamwehera	100% Completed	26
Water supply for Galkotukande beat office	100% Completed	10
Repairing of range office at Galge buildings, Yala NP	100% Completed	740
Repairing of range quarters at Galge buildings, Yala NP	100% Completed	344
Repairing of toilets in staff quarters at Galge buildings, Yala NP	100% Completed	230
Solar power unit for Galge buildings, Yala NP	100% Completed	544
Entrance building Combined Quarters.- Bundala NP	100% Completed	636
Electricity supply for 419 Jayagaga beat office	100% Completed	14
Rehabilitation of AD office, Veterinary office & quarters-AD(Eastern)	100% Completed	3,620
Telephone connection for Kumana NP	01 connection was completed	6

Telephone connection for Angammadilla NP	1 connection was completed	6
Painting of building at Galkade entrance at Maduruoya NP	100% Completed	97
Testing fee-Tube well at Maduruoya NP	100% Completed	34
Water supply for Ranger office, Mahaweli region	100% Completed	32
Water supply system for AD quarters	100% Completed	22
Water supply system for PW office at Lunugamwehera	100% Completed	29
Construction of well at Galpaya & Thimbiriyamankada(Testing free)	100% Completed	45
Supply electercity for Panahaduwa at Udawalawa NP	100% Completed	14
Reparing of buildings in Katagamuwa beat office, Yala NP	100% Completed	100
Supply electercity for Galapaya beat office at Yala NP	100% Completed	267
Water supply to Wildlife land in Hikkaduwa NP	100% Completed	39
Reparing of buildings in Horagolla NP	100% Completed	202
Miscellaneous		343
<i>Total</i>		19,896

- **Construction of New Buildings**

Construction of new buildings carried out during the year is given in the Table 8.2. Fund allocations from consolidated fund were utilized for these constructions.

Table 8.2: Construction of New Buildings in 2011

New constructions	Physical Progress	Financial Progress (Rs'000')
Eluwankulama Kalaoya Entrance office	98% Completed	1,212
Eluwankulama Kalaoya Staff quarters	100% Completed	2,014
Eluwankulama Ranger Quarters (W.NP)	100% Completed	2,236
Mollikulama Ranger Quarters (W.NP)	75% Completed	1,388
Mollikulama Ranger Office(W.NP)	75% Completed	1,295
Mollikulama combine quarters (W.NP)	75% Completed	2,124
Marawila Beet office (W. NP)	35% Completed	1,179
Okanda combined quarters (Kumana NP)	100% Completed	3,280
Thummulla circuit (kumana NP)	60% Completed	1,179
Okanda toilet block (Kumana NP)	80% Completed	998
Commitment 2010 -Summer hut - Hunuwilagama(Wilpattu NP)	100% Completed	54
Commitment 2010 - Summer hut - Kumbukwilla(Wilpattu NP)	100% Completed	66
Construction of a fence around proposed wildlife office in Kantale	100% completed	53
Construction of range office, quarters, and minor staff quarters in Kilinochchi	25% completed	3,650
Construction of range office, quarters, and minor staff quarters in Madu road	45% completed	3,858
Construction of range office, quarters, and minor staff quarters in Mannar	Still not work started	1,933
Tilling toilet block in Hunuwilagama in Willpattu NP	100% Completed	61
Reparing AD(Wayaba) office , Quarters	100% Completed	227
Miscellaneous		
Advertisement of procurement notice for constructions of N & E Buildings		123
Construction of well at Madu road amd tube well in Wilpattu NP	water quality of 01 well and 01 tube well were tested	90
Reparing AD(Eastern) office	100% Completed	247

Supply & Delivery hump pipes to Hunuwilagama, Wilachchiya and Maduruoya	100% Completed	8,412
Construction of buildings at Thanthirimale entarance	30% completed	3,395
Construction of buildings at Mahwilachchiya entarance	40% completed	3,624
Construction of Hunuwilagama Canteen and Sales center	5% completed	537
Total		43,235

- **Construction and Rehabilitation of Water Bodies**

At present existing tanks and water holes are not sufficient to fulfill water requirement of the animals during dry seasons. Therefore, it is necessary to maintain an adequate water supply for wild animals within the wildlife reserves DWC has taken steps to construct new water bodies and renovate and repair existing tanks and water holes to enhance water supply for animals throughout the year (Table 8.3).

Table 8.3: Rehabilitation and Construction of Water Bodies in 2011

Activity	Physical Progress	Financial Progress
Rehabilitation of Tholambuela Amuna in Kahallapallekele Sanctuary(2010 Commitments)	100% Completed	862
Rehabilitation of Pothuwila Kithulewewa in Kahallapallekele Sanctuary(2010 Commitments)	100% Completed	2,614
Rehabilitation of Karambawewa at Ritigala Sanctuary(2010 Commitments)	100% completed and extra works to be completed	2,822
Rehabilitation of Muwanpalassa tank at Udawalawa NP(2010 Commitments)	100% completed	1,680
Water supply project – Yala NP	100% Completed	398
Repairing of pipe line & pump - Yala NP.	98% completed	762
Construction of 05 Concrete ponds in Kumana NP	100% completed	456
<i>Total</i>		9,594

2.3 Development of Road Network

As wildlife reserves in the country have expanded progressively during the past few years, necessary infrastructure facilities need to be developed for both to enhance protection and to enhance visitor facilities. Development of road network in PA system plays a significant role in this regard.

Rehabilitation of roads was completed in Yala, Udawalawa, Horton Plains, Kumana, Wasgamuwa and Minneriya National Parks. Table 8.4 provides the details of road development activities carried out in 2011.

Table 8.4: Rehabilitation of PA Road Network in 2011

Activity	Physical Progress	Financial Progress
Construction of Road Galkada – Kandeganvila – Gurukumbura Culvert or Causeway – Maduruoya NP	9km was completed	8,641
Rehabilitation of Diwulgashandiya,Uraluwewa, Goyagala-Mayagala,Warahana Road with side drains and Gravel where necessary	40% completed(1km completed)	70
Rehabilitation of Roads in Yala Block III , construction of causeways , culverts, where necessary	42 Km was completed	290
Rehabilitation of Kossapola-Jayanthi tank road (with motor grader) in Galoya NP	07 Km was completed	493
Rehabilitation of Suduwelimulla Road in Yala National Park	100% completed	165
Rehabilitation of roads of national parks using Department machineries	Rehabilitation of internal road(7 km) in Kuman NP was completed,	15
Rehabilitation of Roads of Udawalawa National Park	30% completed	171
Rehabilitation of Roads of Minneriya National Park	25Km was completed	300
Rehabilitation of Roads of Wasgamuwa National Park	50Km was completed	269
<i>Total</i>		10,414

Chapter 9

ADMINISTRATION DIVISION

9.1. Main Activities and Responsibilities

- Preparation of Human Resource and General Administration Plans.
- Recruitment of employees.
- Transfers: annual, on disciplinary grounds and exigencies.
- Service extensions, Retirement, Pensions and W&OP matters.
- Disciplinary matters.
- Payment of compensations.
- Performance appraisal and Increments.
- Construction and repairing of field buildings.

9.2. Efficiency Bar Examinations

Following examinations were held and results were released.

Examination	Number of candidates
Wildlife Guard	450
Ranger Assistant	115
Ranger Grade III	46
Ranger Grade II	27
Ranger Grade I	1

In addition following activities were carried out to improve the quality of department cadre.

- Compensation for injuries has been paid to 02 field officers.
- Annual transfer and appeal boards were completed in time.
- Proposal for DWC cadre, recruitment procedures and salary schemes has been forwarded to National Salary and Carder Commission and discussions are in progress based on this proposal.
- Distress loan, Property loan and Bicycle lone have been paid to 338, 29 and 07 officers respectively.
- Insurance benefits for hospital admission (88), spectacles (77), births (13) and injuries (08) were arranged to be paid from National Insurance trust Fund.

Chapter 10

FINANCE DIVISION

The Finance division of the Department of Wildlife Conservation coordinates all financial activities applicable to the DWC. The division coordinated the institutions of the Ministry of Finance such as Department of Public Finance, Department of State Accounts, Department of National Budget, Department of Fiscal Policy and Revenue, Department of Treasury Operations.

10.1. Main Activities and Responsibilities

- Planning, implementing, controlling and accounting of annual revenue and expenditure budget of the department.
- Financial control over imprested receipts from treasury and various institutions.
- Classification and submission of financial information to the general treasury, the ministry of environment and natural resources and to the other divisions of the department.
- Submission of annual accounts, appropriation account, revenue account, public officers' advance account and the wildlife preservation fund account administrated by the DWC.

10.2 Purchasing of Furniture and Office Equipment

- New Furniture and office equipment were purchased for new head office building, regional wildlife offices & wildlife bungalows.

Table 10.1: Expenditure for Furniture and Office Equipment in 2011

Activity	Expenditure (Rs. '000')
Furniture for new head office building	303
Furniture for regional offices	2,675
Total	2,978

- In addition various machinery and equipment were purchased (Rs. Million 0.284) for head office and wildlife regional offices in support of implementing for effective conservation activities.

10.3. Wildlife Preservation Fund (WPF)

WPF was created in 1967 with the mandate of supporting wildlife conservation in Sri Lanka. Objectives of WPF, as gazette, are as follows.

1. To enhance the corporation of public on protecting & conserving wild animals.
2. Maintenance of protected areas declared for wildlife conservation.
3. Payments of rewards to the wildlife officers & public appreciation for their admirable contribution to wildlife conservation.
4. Payment of rewards to informants against wildlife crimes.

Table 11.1 shows that the total annual contribution of WPF for wildlife management as per mandate. Table 10.4 illustrates the detailed accounts of WPF for the year 2011.

Table 10.2: Expenditure of Wildlife Preservation Fund 2005 to 2011

Year	Estimate (Rs. Mn)	Expenditure (Rs. Mn)	% Expenditure
2005	56	53	95%
2006	58	57	98%
2007	75	56	75%
2008	112	81	72%
2009	134	99	74%
2010	161	121	75%
2011	242	206	85%

10.4. Budget Details

Budget details of the Department in relation to the year 2011 are as follows.

Head – 284. Department of Wildlife Conservation
Programme: 01 Operational Activities
Project: 01 – Administration and Establishment Services

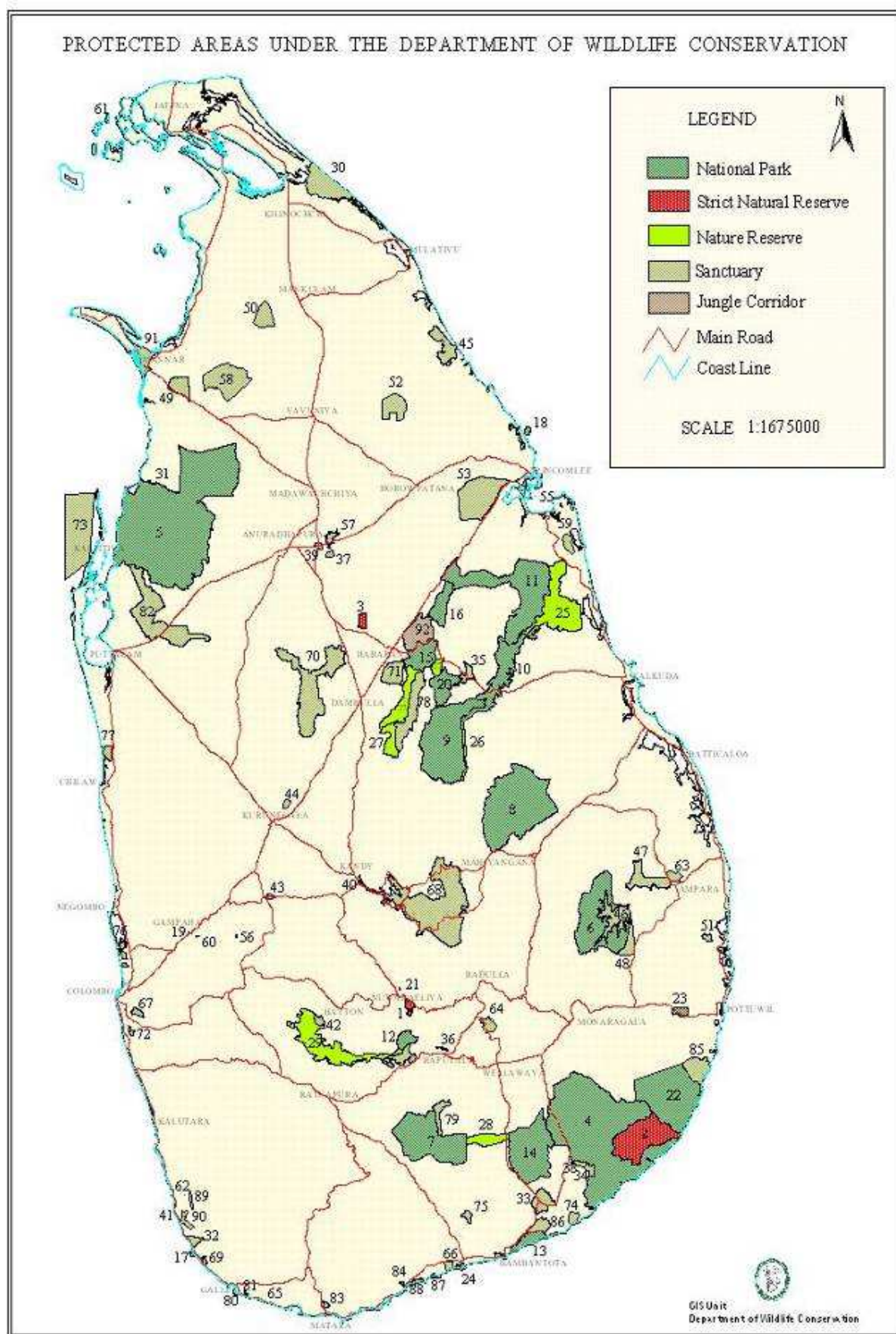
Following details indicates the performance of the department in relation to expenditure.

Table 10.3: Budget Details of the Department in 2011

Items	financing	Category / Object Title	Rs. '000'	
			Estimate 2011	Actual 2011
		CAPITAL EXPENDITURE	513,290	403,141
		Rehabilitation and Improvement of Capital Assets	79,000	71,608
	11	Buildings and Structures	70,000	
1	11	Establishment of Protected Area Net Work	7,500	5,517
2	11	Ecotourism Management	11,000	10,977
3	11	Eco-development In and Out Protected Areas	2,000	1,835
4	11	Conservation of Endangered species	4,500	3,416
5	11	Information and Communication System	2,000	2,575
6		Rehabilitation Of Road Net Work	11,000	10,414
7	11	Rehabilitation Of Water Bodies	11,000	9,594
8	11	Other (Buildings)	21,000	19,896
	11	Plant , Machinery and Equipment	2,000	708
	11	Vehicles	7,000	6,676
		Acquisition of Capital Assets	24,850	18,578
	11	Vehicles		
	11	Furniture and Office Equipment	3,000	2,945
	11	Plant , Machinery and Equipment	850	717
	11	Buildings and Structures	10,000	6,990
	11	Lands and Land Improvements	11,000	
1	11	Habitat Enrichment for Wildlife	7,500	5,199
2	11	Establishment of Road Network in Protected Areas	3,500	2,727
		Capacity Building	20,000	19,945
	11	Training and Capacity Building	20,000	
1	11	Training and Research	2,000	1,901
2	11	Conservation , Education, Extension, and Interpretation	5,458	5,458
3	11	Protection and Law Enforcement	4,452	4,496
4	11	National Wildlife Training Centre Girithale	8,090	8,090
		Construction of New Office Building for the Department Of Wild Life Conservation (DWC)		
		Acquisition of Capital Assets		
	11	Buildings and Structures		
	11	Lands and Land Improvements		
		Conservation of Elephants Acquisition of Capital Assets	300,000	228,270
	11	Buildings and Structures	300,000	228,270
		Development and National Parks in North Eastern	89,440	64,740
	11	Buildings and Structures	89,440	64,740
1		Planning , ICT , VSM	24,650	6,025
2		Civil Works	46,000	43,235
3		Natural Resource Development & Management	18,790	15,480
		Protected Area management & Wildlife Conservation		
		Other Capital Expenditure		
	11	Other Investment		

Table 10.4: Receipt and Payment Account of Wildlife Preservation Fund up to 31-12-2011

Description	2010	(Rs.)
Balance on as 2011.01.01		288,720,853.41
Receipt		
Park entry free	538,268,754.76	
Entry fee ETH	5,240,479.38	
Service charges	67,908,367.57	
Vehicles entry charges	30,662,128.38	
Poster parent scheme	5,874,268.66	
Fines imposed by courts	25,266,172.00	
Donations	424,304.88	
Filming charges in National Parks	272,654.61	
Books, Magazine and Periodicals	600,346.18	
Import & Export Permits for parts of Animal & Plant	452,399.13	
Linen charges at circuit bungalows	1,927,575	
Campsite occupation frees	2,998,690.90	
Registration of domestic elephants	76,550.00	
Fishery permits	73,000.00	
Timber & Fuel wood sales	-	
Sands sales	29,600,354.50	
Registration of tasks	4,000.00	
		709,650,045.95
		998,370,899.36
Payment		
Stationery	421,819.80	
Maintenance of buildings & machinery	1,694,598.01	
Service charges	51,936,311.73	
Compensation of deaths and injuries of wildlife officers	501,500.00	
Allowance for volunteer guides	25,607,055.55	
Animal foods	21,268,331	
Compensation to damages by Wild Animals	-	
Fuel	7,452,906.43	
Radio Communication Network Frequency Charge	3,135,207.25	
Incentives	2,192,471.60	
Elephant drives	4,688,270.29	
Medical supplies	8,923,160.08	
Traveling claims	13,433,903.85	
Payment of electricity & water supply bills	3,180,960.41	
Gun license	236,600.00	
Conservation of endangers species	1,441,326.20	
Burnt of elephant carves	512,399.00	
Legal charges	104,000.00	
Laundry charges	314,903.00	
Repairing of vehicles	7,857,093.69	
Salary for casual labours	5,971,210.86	
Purchasing of thunder & serpent flare	-	
Charges of funeral expenses	-	
Other expenditures	36,498,353.53	
Improving Facilities of National Parks, Wildlife & Visitors	8,412,124.52	
		205,784,507.75
Balance as on 31-12-2011		792,586,391.61



Wildlife Protected Areas in Sri Lanka

S/N	Strict Natural Reserve	Area (ha)	Date of Declaration
1	Hakgala	1,142	1938.02.25
2	Yala	28,905	1938.03.01
3	Ritigala	1,528	1941.11.07
	Sub Total	31,575	

S/N	National Park	Area (ha)	Date of Declaration
4	Ruhuna (Yala) N.P.	97,881	1938.02.25
5	Wilpattu	131,667	1938.02.25
6	Galoya	25,900	1954.02.12
7	Udawalawa	30,821	1972.06.30
8	Maduru Oya	58,850	1983.11.09
9	Wasgamawa	37,063	1984.08.07
10	Floodplains	17,350	1984.08.08
11	Somawathiya	37,646	1986.09.02
12	Horton plains	3,160	1988.03.16
13	Bundala	6,216	1993.01.04
14	Lunugamwehera	23,499	1995.12.08
15	Minneriya	8,889	1997.08.12
16	Kaudulla	6,900	2002.04.01
17	Hikkaduwa	102	2002.10.08
18	Pigeon Island	471	2003.06.04
19	Horagolla	13	2004.07.28
20	Angamaddilla	7,529	2006.06.06
21	Galwaysland	292	2006.06.18
22	Yala East (Kumana)	35,665	2006.07.05
23	Lahugala- Kithulana	5,131	2006.07.20
24	Ussangoda	349	2010.05.06
	Sub Total	526,505	

S/N	Nature Reserve	Area (ha)	Date of Declaration
25	Trikonamadu	25,019	1986.10.24
26	Riverine	824	1991.07.31
27	Minneriya-Giritale		
	I. Block 2	1,924	1993.06.25
	II. Block 3	4,745	1995.07.07
	III. Block 4	8,336	1997.09.01
28	Wetahirakanda	3,229	2002.06.07
29	Peak Wilderness	12,979	2007.09.21
	Sub Total	32,037	

S/N	Sanctuary	Area (ha)	Date of Declaration
-----	-----------	-----------	---------------------

30	Chundikulam	11,149	1938.02.25
31	Willpattu north	632	1938.02.25
32	Telwatta	1,425	1938.02.25
33	Weerawila Tissa	4,164	1938.05.27
34	Kataragama	1,004	1938.05.27
35	Polonnaruwa	1,522	1938.05.27
36	Tangamalai	132	1938.05.27
37	Mihintale	1,000	1938.05.27
38	Kataragama	838	1938.05.27
39	Anuradhapura	3,501	1938.05.27
40	Udawattakelle	104	1938.07.29
41	Rocky Islands –(Ambalangoda)	1	1940.10.25
42	Peak wilderness	22,379	1940.10.25
43	Kurulukeye	113	1941.03.14
44	Welhilla ketagilla	134	1949.02.18
45	Kokilai	1,995	1954.05.18
46	Senanayeka samudraya	9,324	1954.02.12
47	Galoya -North East (Ampara)	12,432	1954.02.12
48	Galoya -South West	15,281	1954.02.12
49	Giant's Tank	4,330	1954.09.24
50	Vavunikulam	4,856	1963.06.21
51	Sagaman	616	1963.06.21
52	Padawiya Tank	6,475	1963.06.21
53	Navel Headworks	18,130	1963.06.21
54	Great sobers Island	65	1963.06.21
55	Little sobers Island	7	1963.06.21
56	Kimbulwana oya	497	1963.06.21
57	Mahakandarawa	5,193	1966.12.09
58	Madu road	26,677	1968.06.28
59	Seruwila Allei	15,540	1970.10.09
60	Maimbulkanda-Nittabuwa	24	1972.10.31
61	Paraitivu	970	1973.05.18
62	Honduwa Island	9	1973.11.19
63	Buddangala	1,841	1974.11.01
64	Rawana ella	1,932	1979.05.18
65	Medin Duwa	1	1980.06.06
66	Kalamatiya	2,525	1984.06.28
67	Sri jayawardenapura	449	1985.01.09
68	Victoria Randenigala Rantambe	42,087	1987.01.30
69	Paraputuwa Nuns Island	190	1988.08.17
70	Kahalla-pallekale	21,690	1989.07.01
71	Sigiriya	5,099	1990.01.26
72	Bellanvila- Attidiya	372	1990.07.25
73	Bar Reef Island (welipara)	30,670	1992.04.03
74	Nimalawa	1,066	1993.02.18
75	Madunagala	995	1993.06.30
76	Muthiraja wela Block I	1,029	1996.10.31
	Block II	257	1996.10.31
S/N	Sanctuary	Area (ha)	Date of Declaration
77	Anavilundawa	1,397	1997.06.11

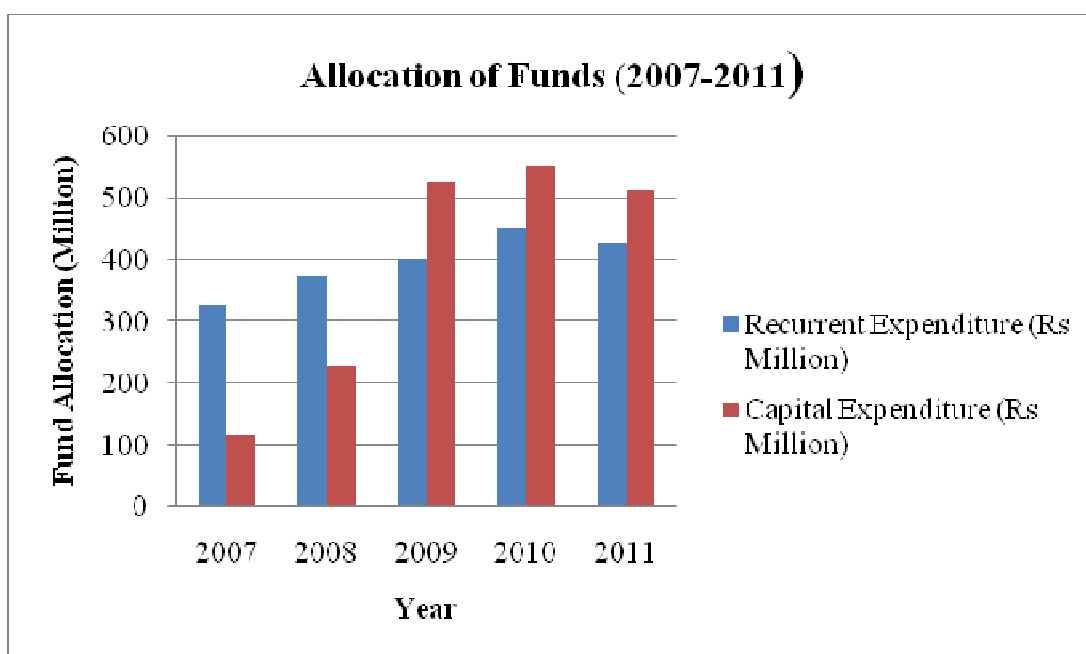
78	Elahara Giritale	14,035	2000.01.13
79	Dahaiyagala	26,851	2002.06.07
80	Rumassala	171	2003.01.03
81	Elluwilayaya	186	2003.09.11
82	Tabbowa	2,193	2002.07.19
83	Kirala kelle	310	2003.09.08
84	Kiramaoya	5	2004.10.06
85	Kudummbigala- Panama	6,534	2006.02.20
86	Wilmanna	3,340	2006.06.30
87	Godawaya	232	2006.05.25
88	Rekawa	271	2006.05.25
89	Maduganga	2,300	2006.07.17
90	Madampawila	1,217.75	2007.09.21
91	Vankellei	4,839	2008.09.08
	Sub Total	344,603.75	

S/N	Jungle Corridor	Area (ha)	Date of Declaration
92	Kaudulla-Minneriya	8,777	2004.06.01
	Sub Total	8,777	

Fund Allocations & Expenditure (2007-2011)

Consolidated Fund

Year	Allocation by Fund Category		Total (Rs Million)	% Expenditure	
	Recurrent Expenditure (Rs Million)	Capital Expenditure (Rs Million)		Recurrent	Capital
2007	326	116	442	98	81
2008	374	229	603	94	68
2009	402	527	929	99	82
2010	453	553	1,006	96	94
2011	430	513	943	99	78



CATEGORY : APPROPRIATION ACCOUNT(2011)						Form : A						
Description	Financial Performance (Rs. In '000)					Physical Performance						
	Current Year		Previous Year Actual	Variations Over		Output(Service/Goods)		Current Year's output		Previous Years Output	Variations Over	
	Budgeted	Actual		Budgetd	Previous Year Actual	Type/class	Measure	Targeted	Actual		Targeted	Previous Years Actual
Programme Title and No . 01 Operational Activities												
Project Title and No. : 01. Administration &Establishment Services												
Expenditure : Recurrent Expenditure												
* Personal Emoluments	328,665	327,213	311,215	(1,452)	15,998	Personal Emoluments	No.of Employees	1735	1196	1200	-539	-4
* Other Recurrent	102,031	101,091	122,053	(940)	(20,962)							
Total	430,696	428,304	433,268	(2,392)	(4,964)							
Capital Expenditure	513,290	403,142	518,429	(110,148)	(115,287)							
Total Expenditure	943,986	831,446	951,697	(112,540)	(120,251)							

CATEGORY : REVENUE ACCOUNTS(2011)														Form:B	
	Financial Performance (Rs. In '000)							Physical Performance							
Description	Arrears of Revenue as at 01.01.2010	Current Year		Previous Years Actual	Variations Over		Arrears of Revenue as at 31.12.2010	Output(Service/Goods)		Current Year's Output		Previous Years Actual	Variations Over		
		Budgeted	Actual		Budgeted	Previous Years Actual		Type/class	Measure	Targeted	Actual		Targeted	Previous Years Actual	
Revenue Codes 20.03.02.06	Nil	15,000	15,592	10,375	592	5,217	Nil	Foreign Visitors	No. of Visitors		206,514	148,410	-	(58,104)	
								Local Visitors	No. of Visitors		748,656	610,373	-	(138,283)	
Total Revenue		15,000	15,592	10,375	592	5,217									

CATEGORY : ADVANCE ACCOUNTS (2011)												Form : C
Description	Financial Performance (Rs. In '000)					Physical Performance						
	Rs. 000					Output(Service/Goods)		Current Year's output		Previous Years Output Actual	Variations Over	
	Prescribed	Actual	Previous Year Actual	Prescribed	Previous Year Actual	Type/class	Measure	Targeted	Actual		Targeted	Previous Years Actual
Type: Advance Account Account Title and No.: Public Officers Advance Account No 28401						Distress Loans	Applicant	350	336	379	(14)	(43)
						Property Loans	Applicant	-	127	-	-	-
						Vehicle Loans	Applicant	-	-	-	-	-
						Indebt Loans	Applicant	-	-	-	-	-
						Bicycle Loans	Applicant	12	7	8	(5)	(1)
						Festival Loans	Applicant	1000	950	990	(50)	(40)
Maximum Expenditure Limit	39,250	39,237	42,318	(13)	(3,081)	Tsunami / Special Loans	Applicant	-	63	74	-	(11)
Minimum Receipt Limit	24,000	33,000	28,548	9,000	4,452							
Maximum Debit Limit	120,000	113,900	102,484	(6,100)	11,416							
Maximum Liability												

CATEGORY : FUND ACCOUNTS (2011)												Form D	
Description	Financial Performance (Rs. '000)					Physical Performance							
	Current Year		Previous Year Actual	Variations Over		Output(Service/Goods)		Current Year's output		Previous Years Output	Variations Over		
	Budgeted	Actual		Budgetd	Previous Year Actual	Type/class	Measure	Targeted	Actual		Targeted	Previous Years Actual	
Type: Fund Account Account Title and No. Wildlife Preservation fund 6000.0.0.6.20 Revenue Operational Non Operational <													

: Operational	242,597	215,583	124,748	(27,014)	90,835							
: Non Operational												
Total Recurrent Expenditure	242,597	215,583	124,748	(27,014)	90,835							
Income Over Expenditure	97,918	509,254	167,704	(411,336)	341,550							
Capital Expenditure	-		-	-	4,093							
Net Worth	513,977	1,217,671	695,953	(703,694)	521,718							